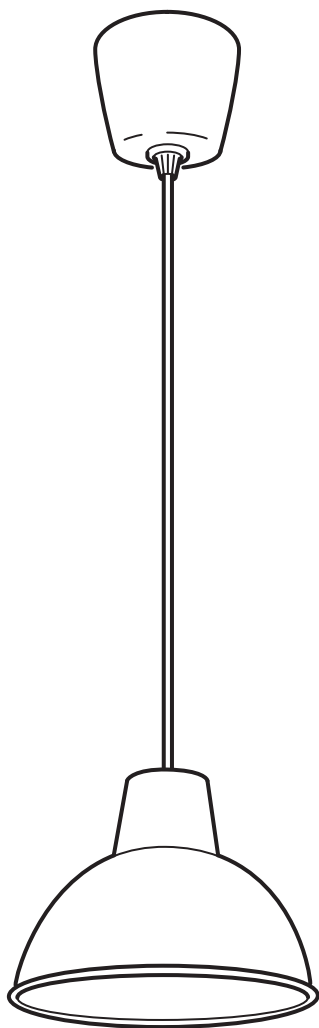


# SKURUP



Design and Quality  
IKEA of Sweden



### English

INSTALLATION INSTRUCTIONS

## CAUTION:

Before starting, turn off power at main circuit panel.

### Français

INSTRUCTIONS D'INSTALLATION

## ATTENTION:

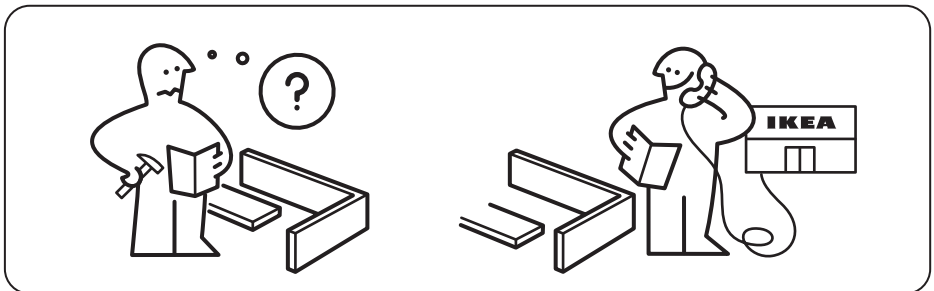
Coupez l'alimentation avant de procéder à l'installation.

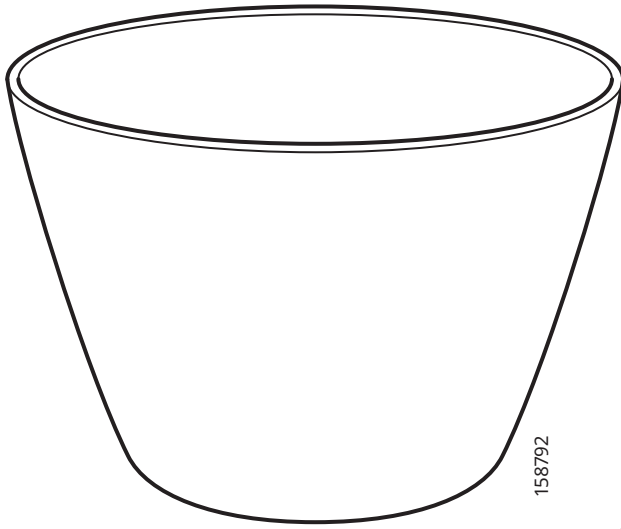
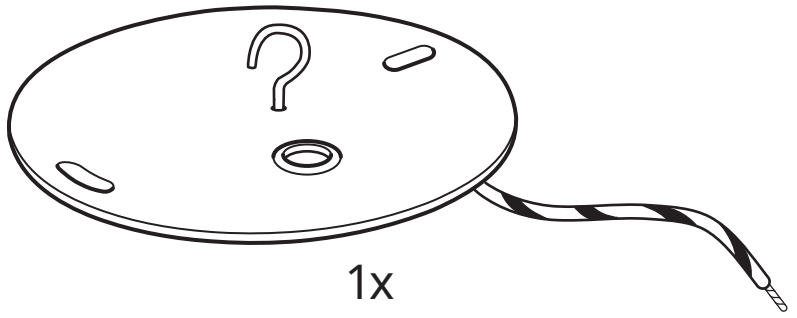
### Español

INSTRUCCIONES DE MONTAJE

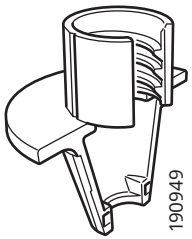
## ADVERTENCIA:

Antes de comenzar el montaje, cortar la luz en el cuadro general.

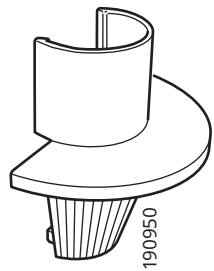




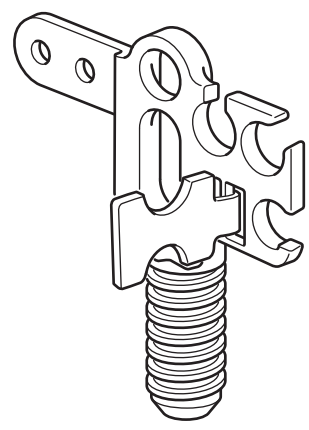
1x



1x

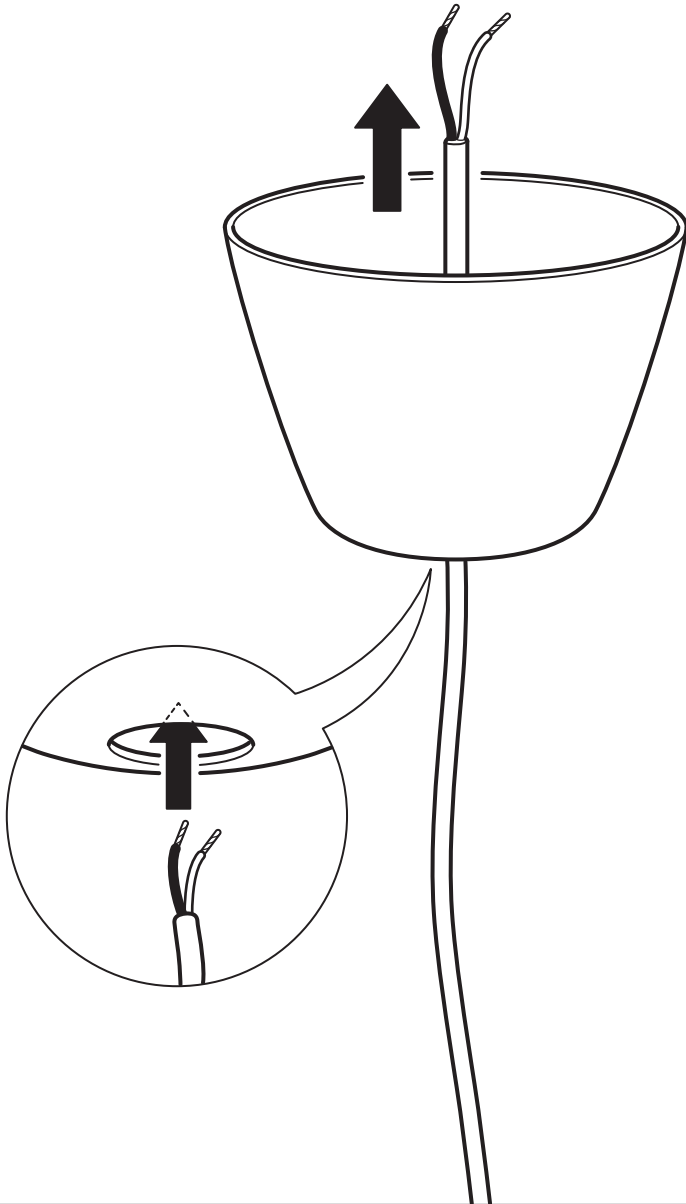


1x

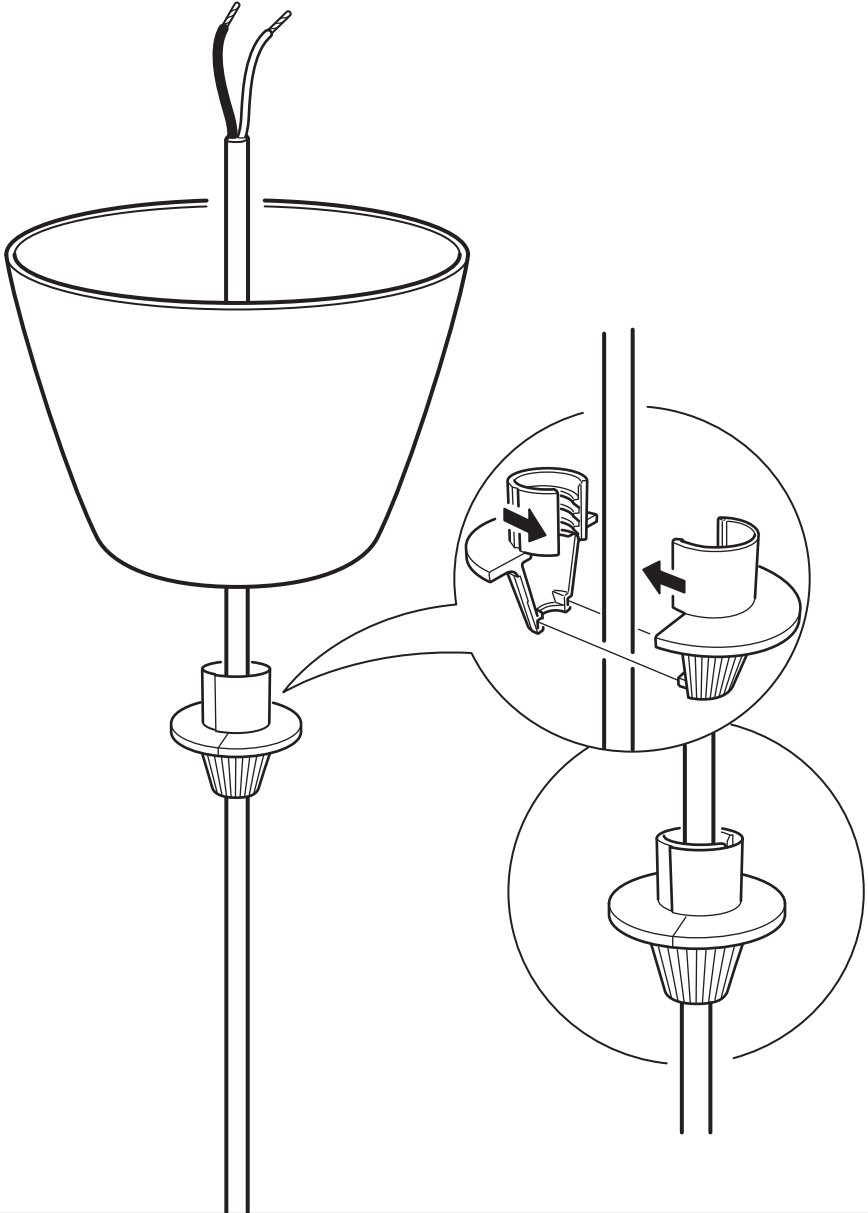


1x

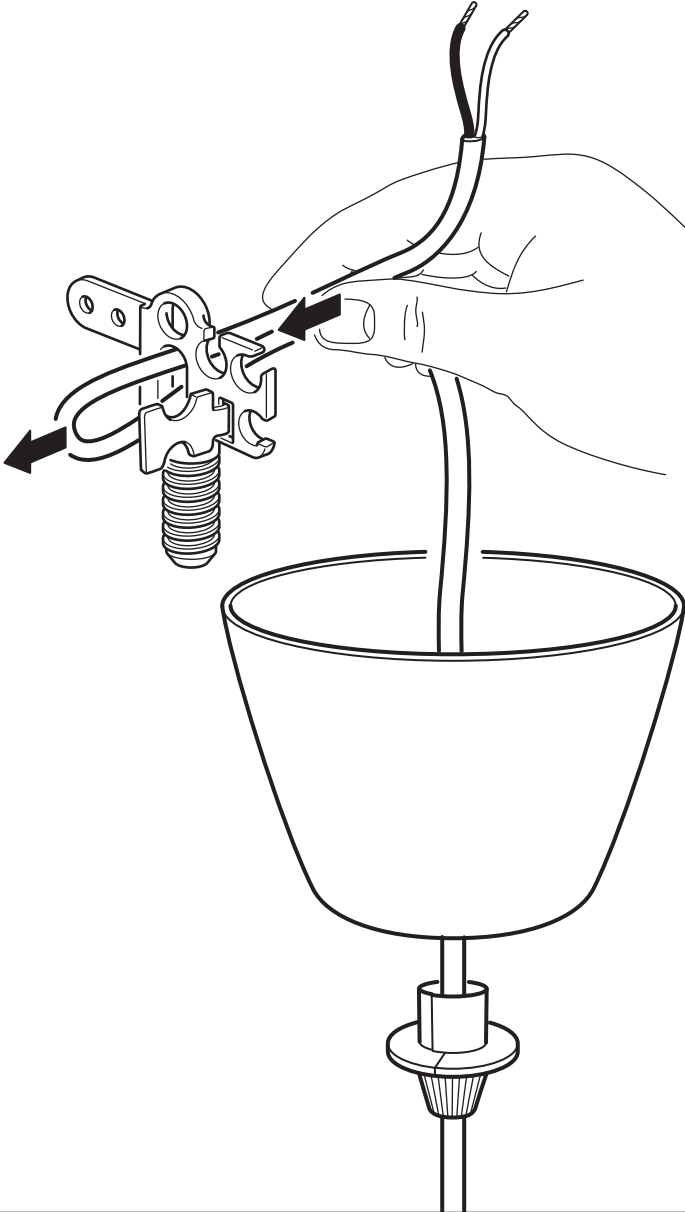
1

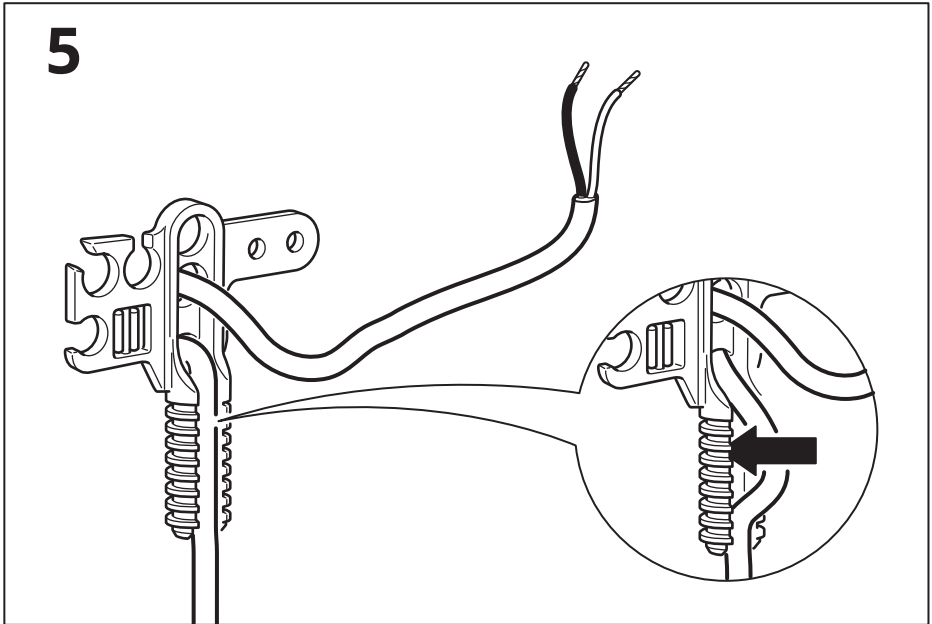
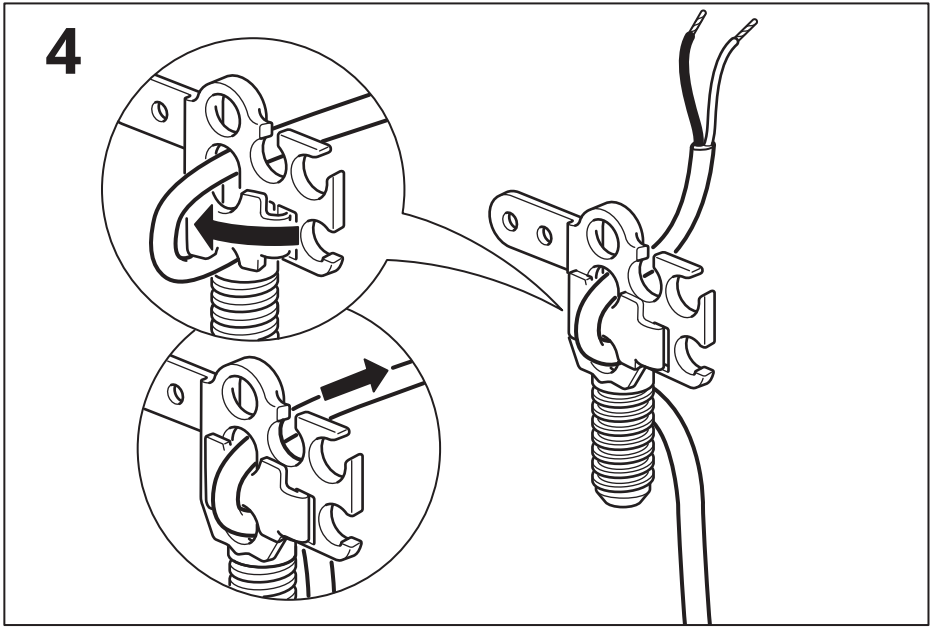


2

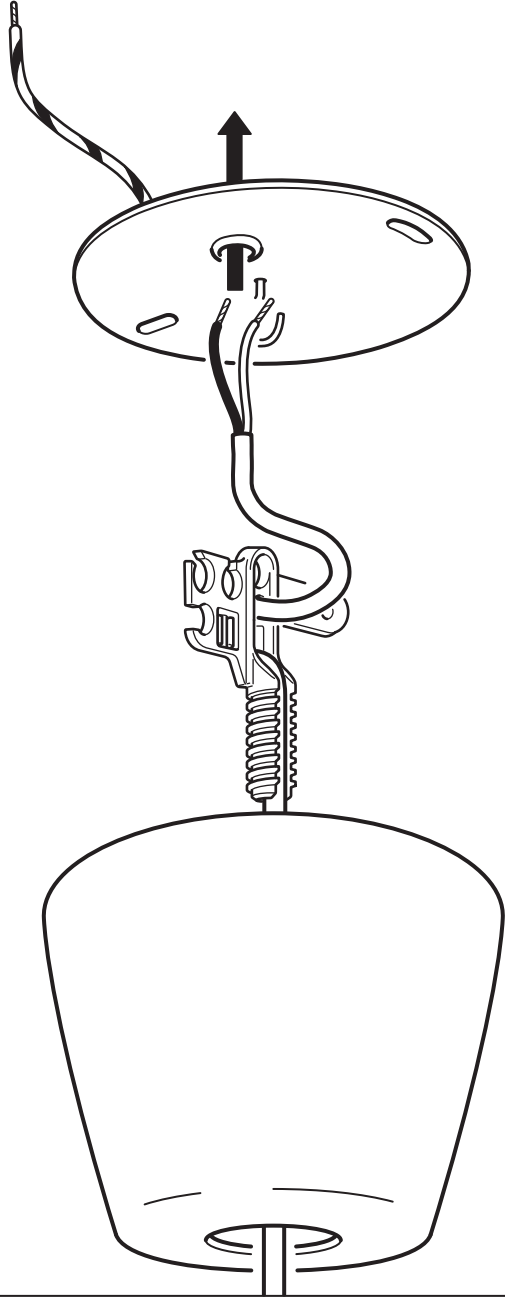


3





6





7



**English**  
Live

**Français**  
Phase

**Español**  
Con  
corriente

**English**  
Neutral

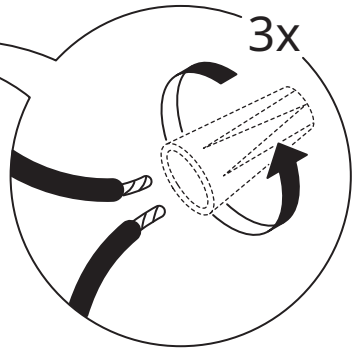
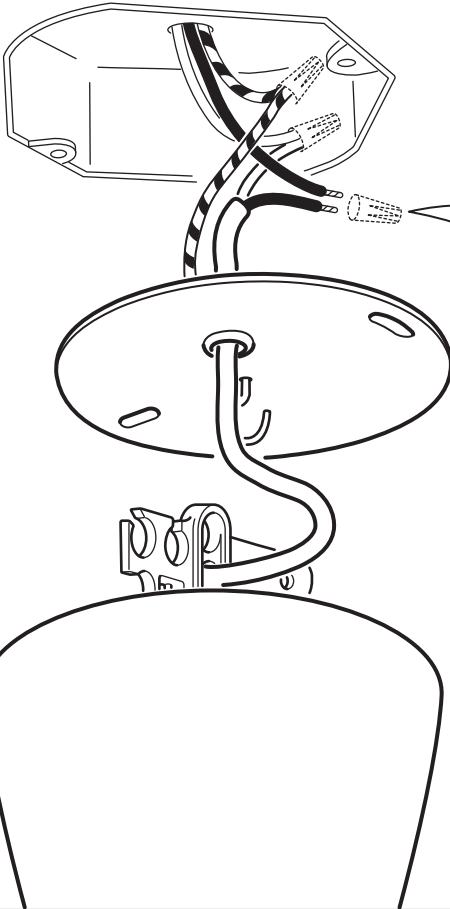
**Français**  
Neutre

**Español**  
Neutro

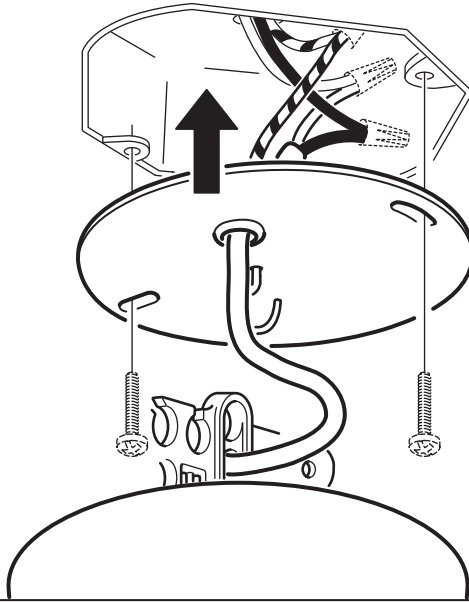
**English**  
Earth/  
Ground

**Français**  
Terre

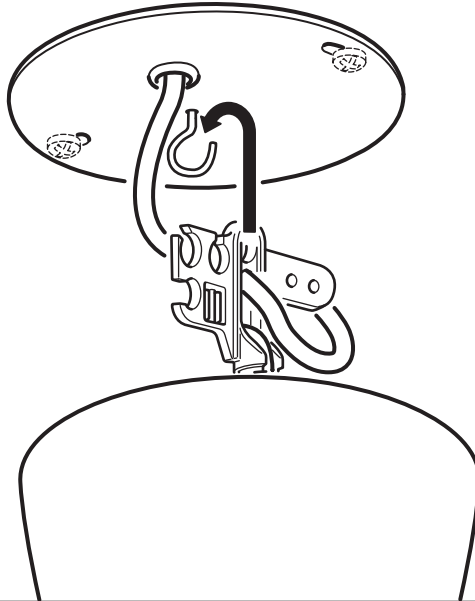
**Español**  
Tierra



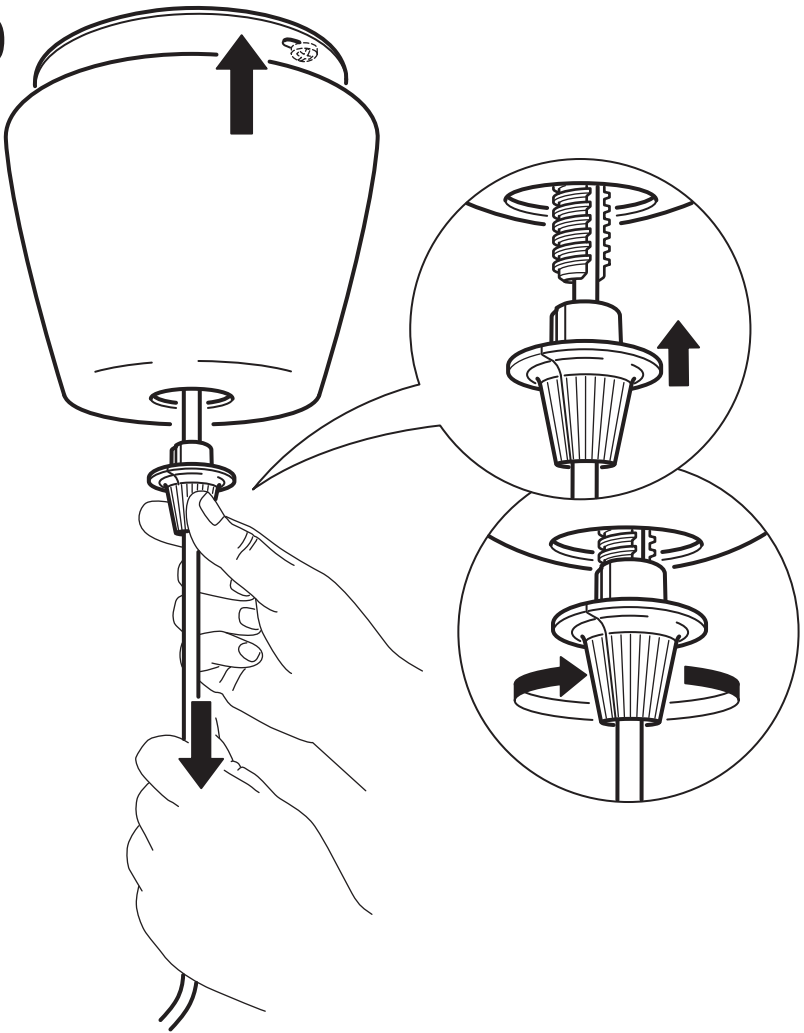
8



9



10

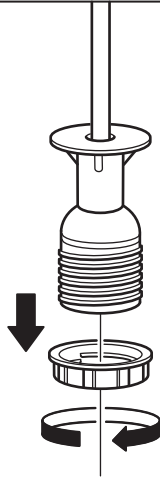


**English**  
CAUTION!  
Do not overtighten.

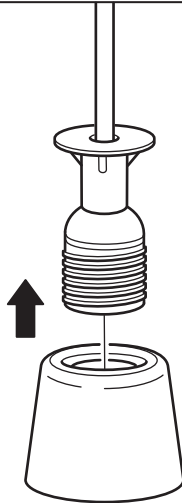
**Français**  
ATTENTION !  
Ne pas trop serrer.

**Español**  
¡PRECAUCIÓN!  
No apretar en exceso.

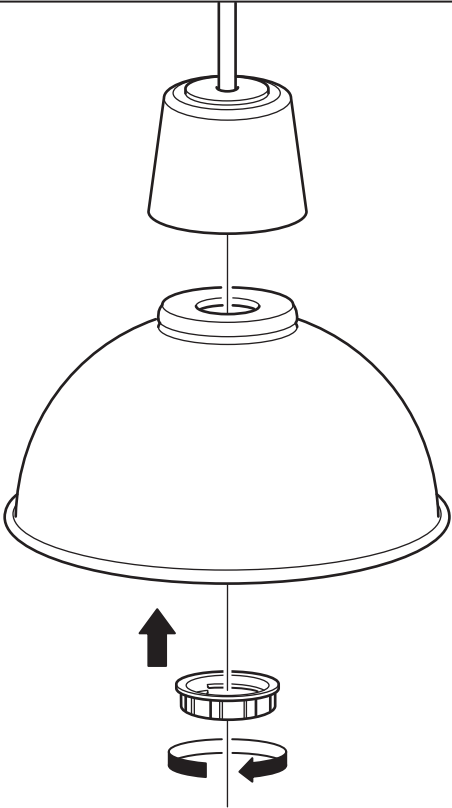
11

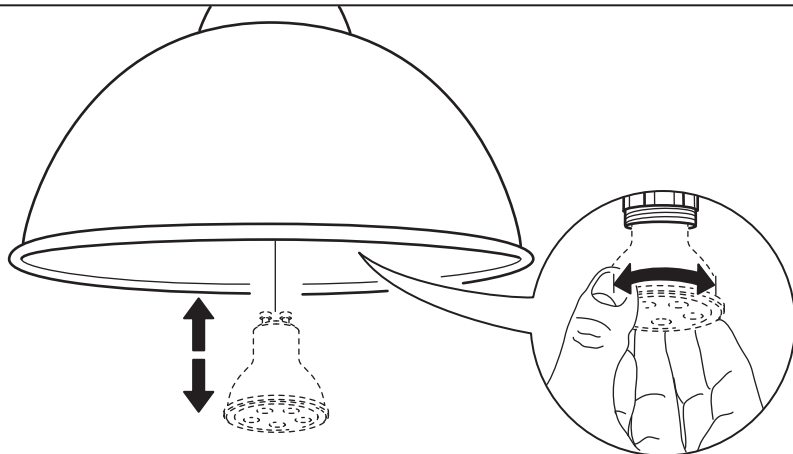


12



13



**English**

WHEN CHANGING BULB - use only  
GU10 LED bulb.  
Do not use GU10 Halogen.

**Français**

REPLACEMENT DE L'AMPOULE -  
utiliser uniquement une ampoule à  
LED GU10. Ne pas utiliser d'ampoule  
halogène GU10.

**Español**

CUANDO CAMBIES LA BOMBILLA:  
utiliza solo la bombilla GU10 LED.  
No uses el halógeno GU10.



