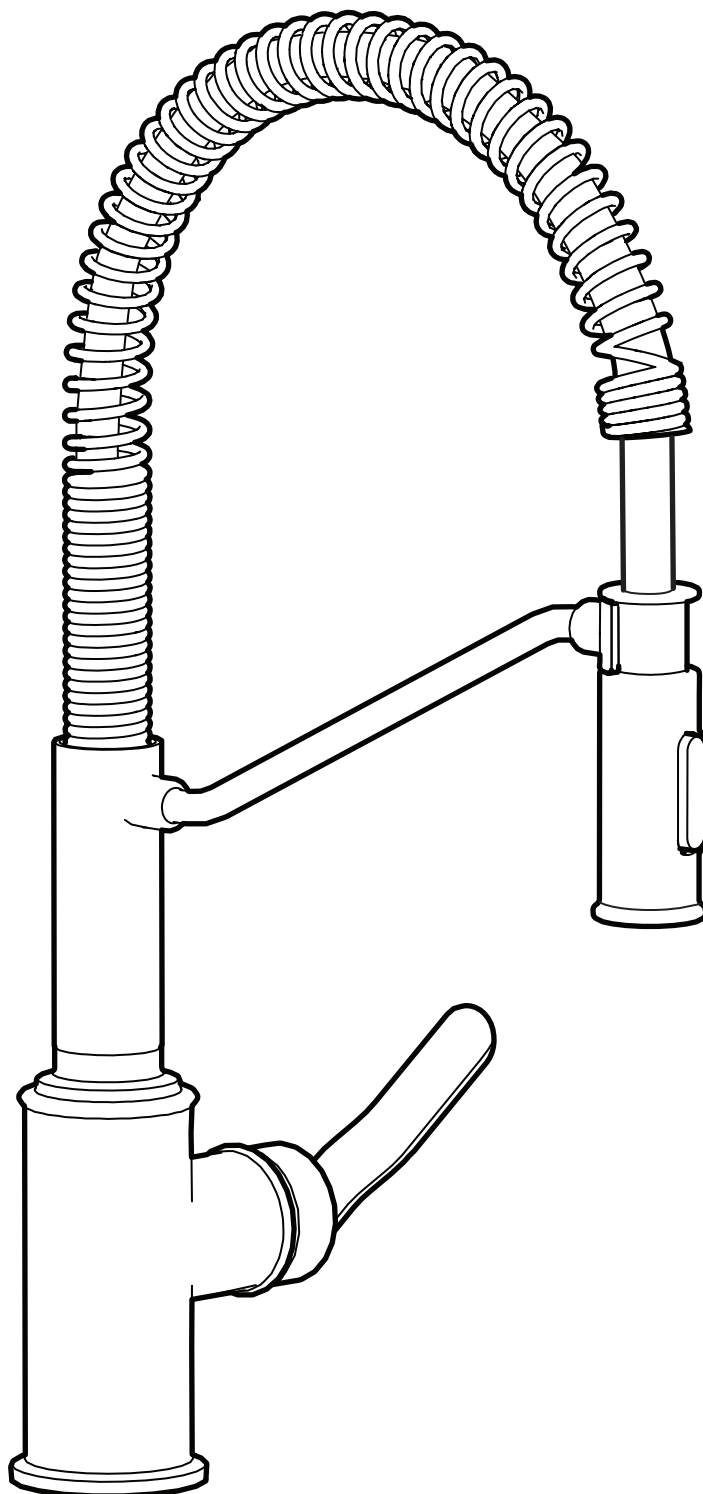


TAKSJÖN



Design and Quality
IKEA of Sweden

Svenska**Innehåll**

Verktyg och reservdelar	4
Montering av produkt	6
Illustration av produkt, delar och artikelnummer	16

English**Contents**

Tools and spare parts	4
Product assembly	6
Illustration of product, parts and part numbers	16



Svenska

Stäng av huvudkranen innan du byter blandare.

English

Switch off main shut-off valve before changing mixer tap.



Svenska

Installationen ska utföras i enlighet med branschreglerna Säker Vatteninstallation.

English

Installation shall be carried out in accordance with Industry Regulations Säker Vatteninstallation.



Accepterad
monteringsanvisning
2026:1



TG 32365



1913

EN 817 | EN 1717

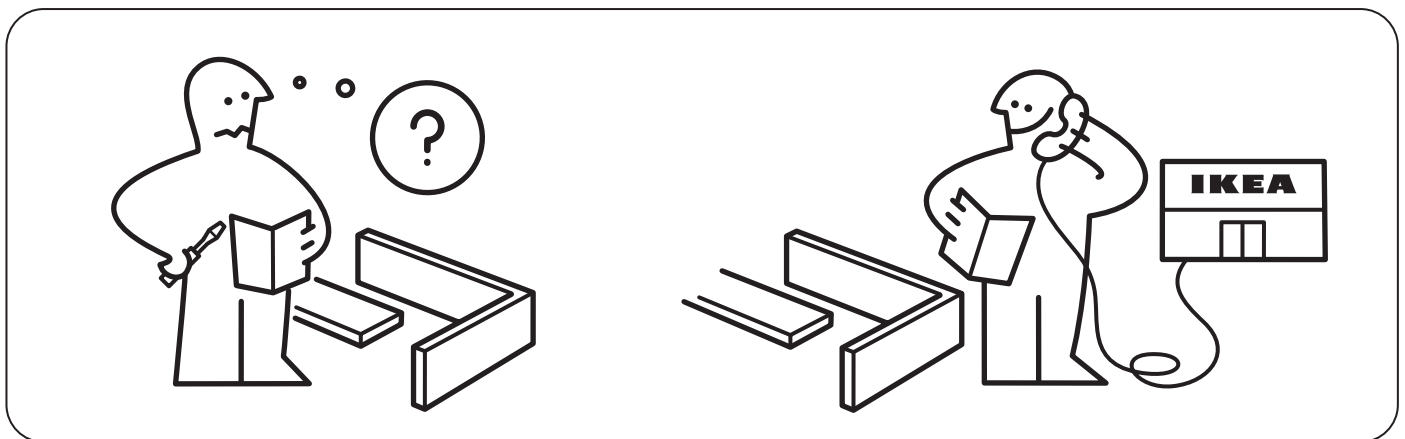
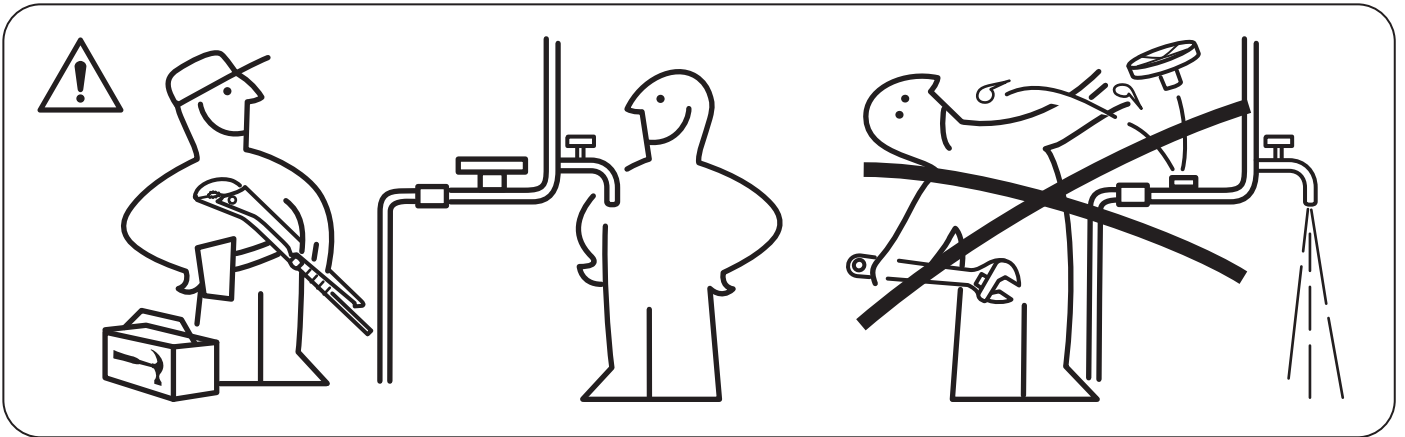
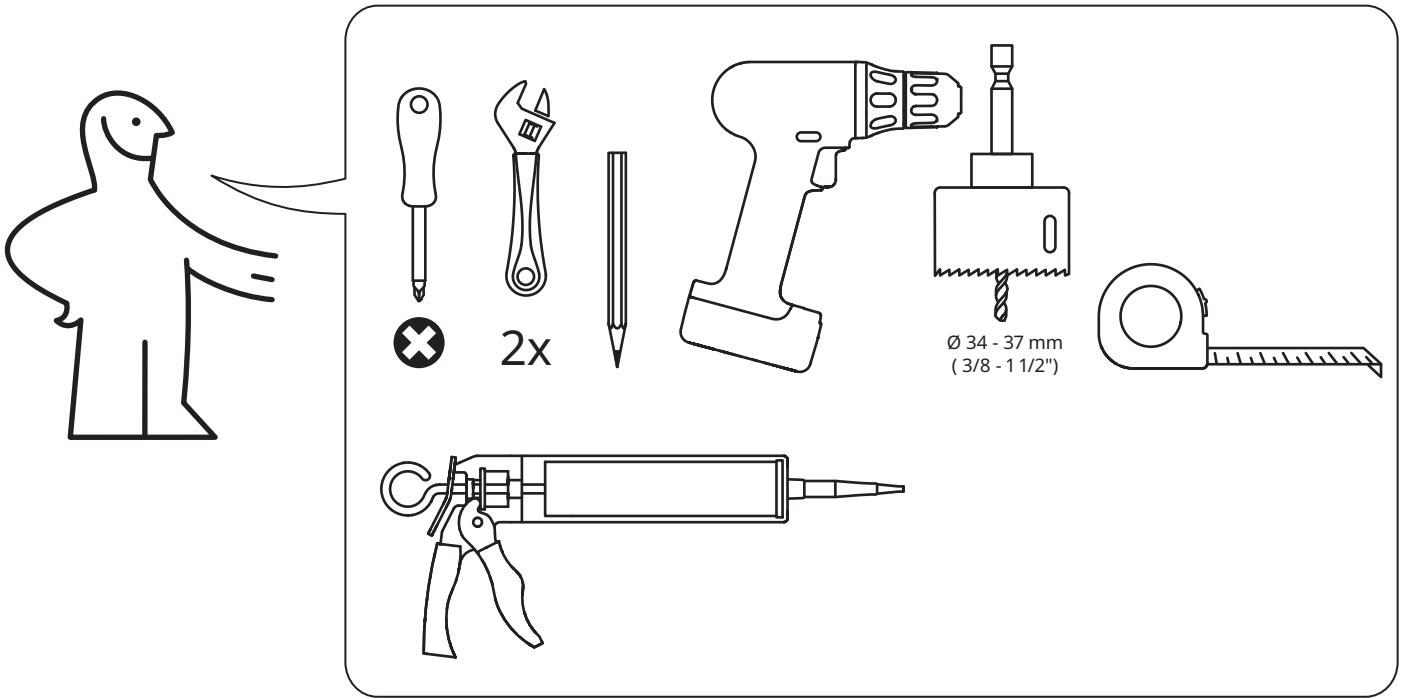
Svenska

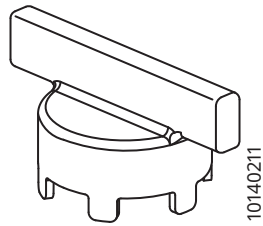
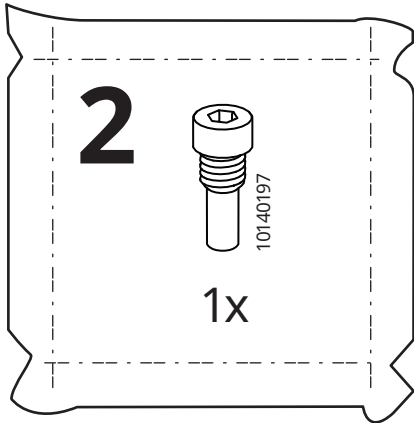
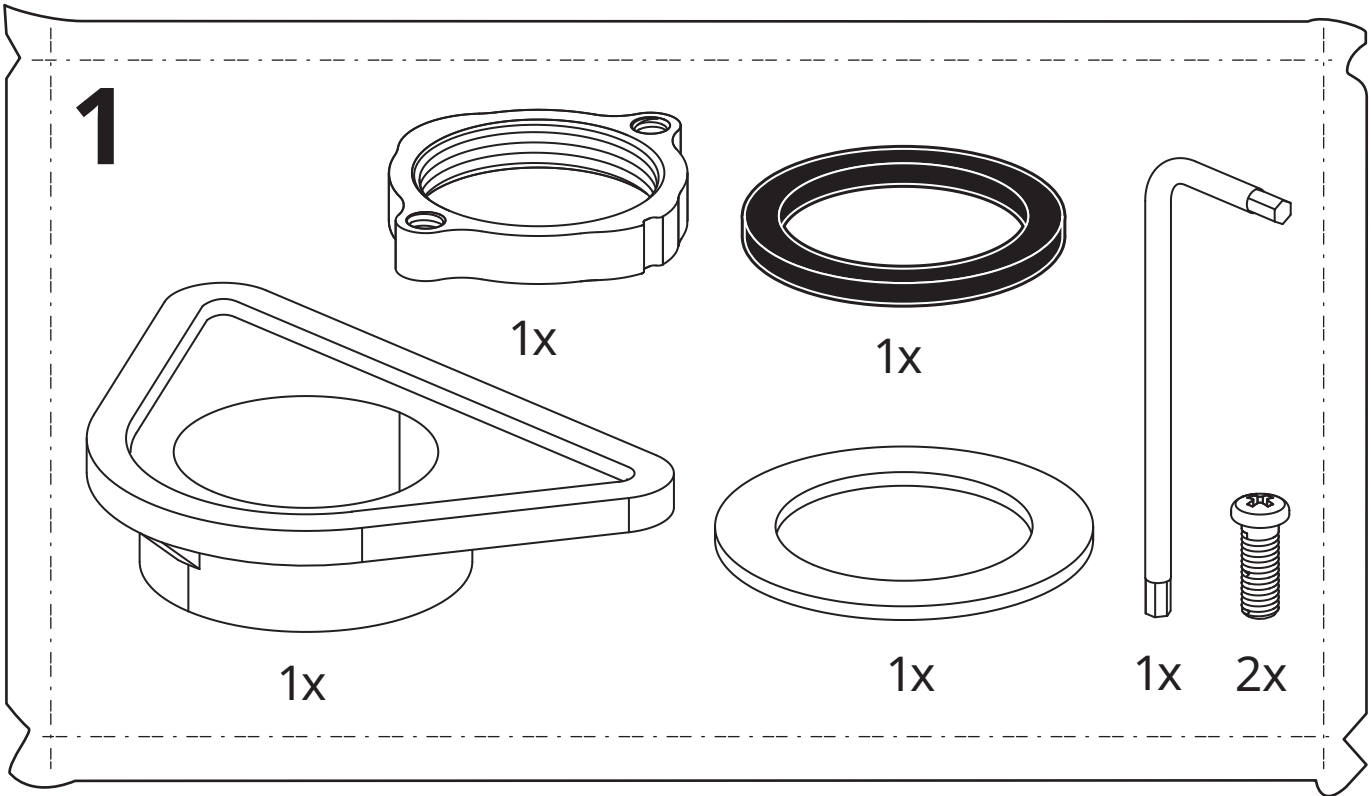
RSK Nr: 8312364

English

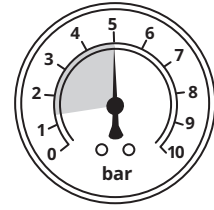
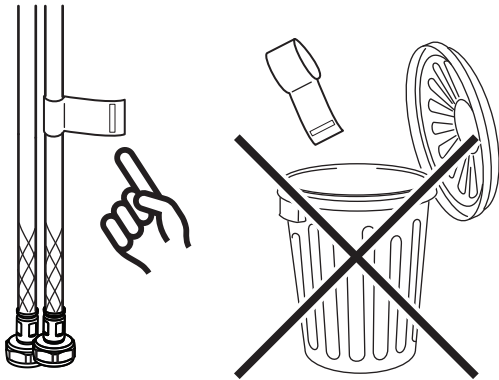
RSK No: 8312364







1x

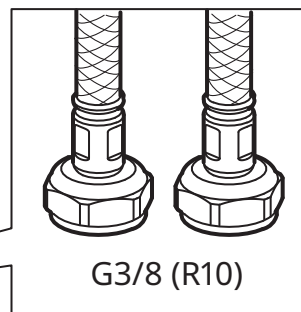
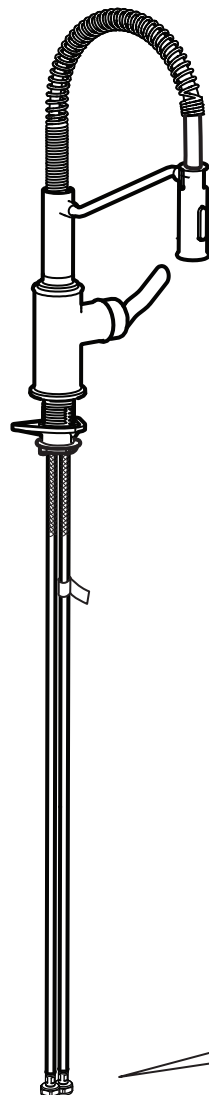


Svenska
Rekommenderad
varmvattentemperatur: 60°C
Max. varmvattentemperatur:
80°C

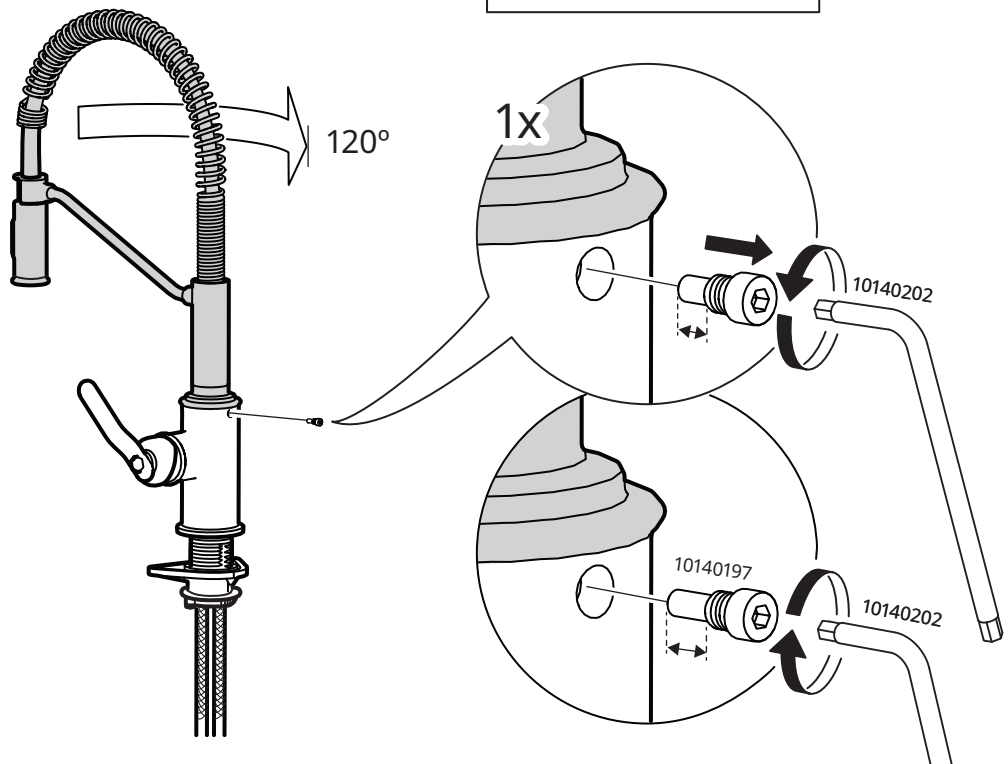
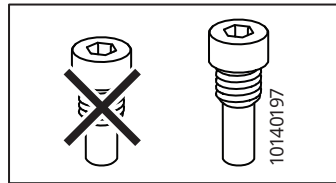
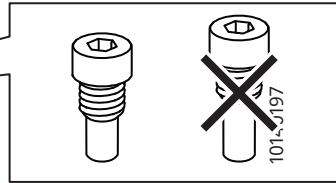
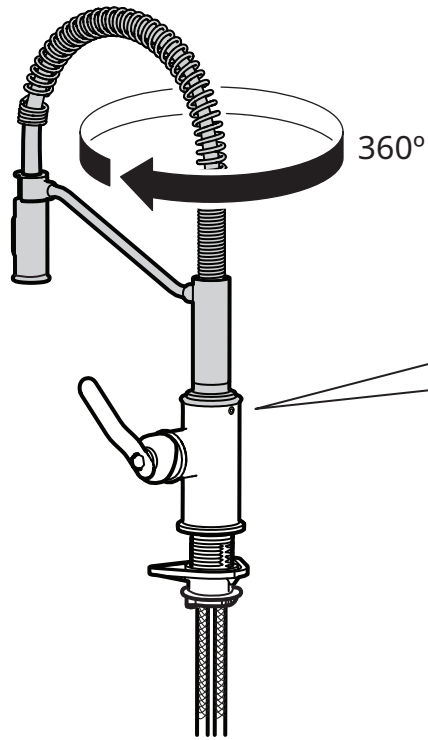
English
Recommended hot water
temperature: 60°C
Max. hot water temperature:
80°C

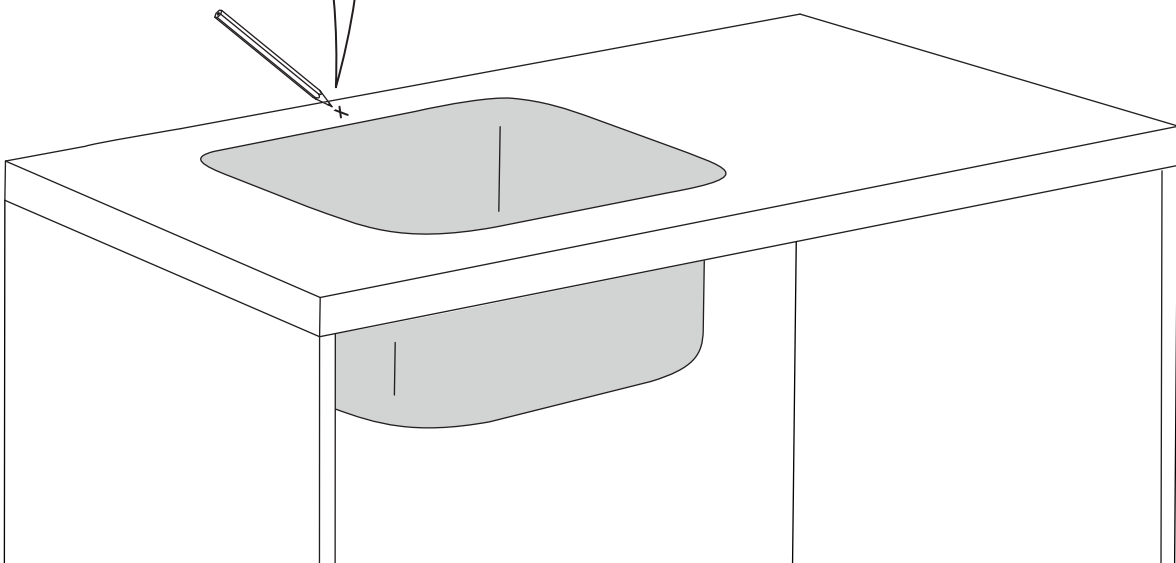
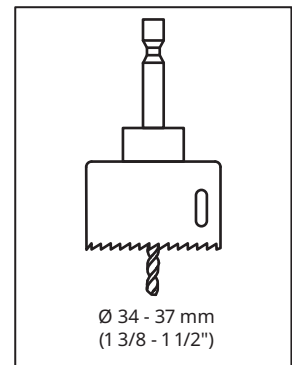
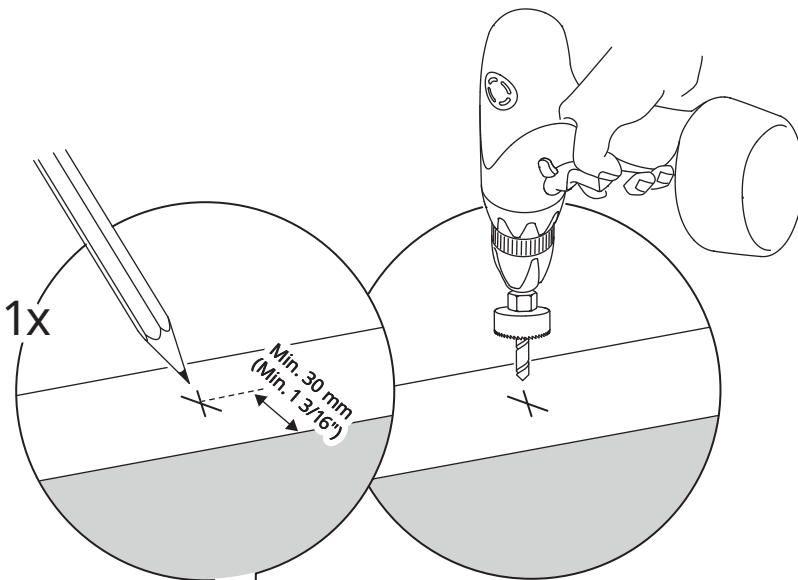
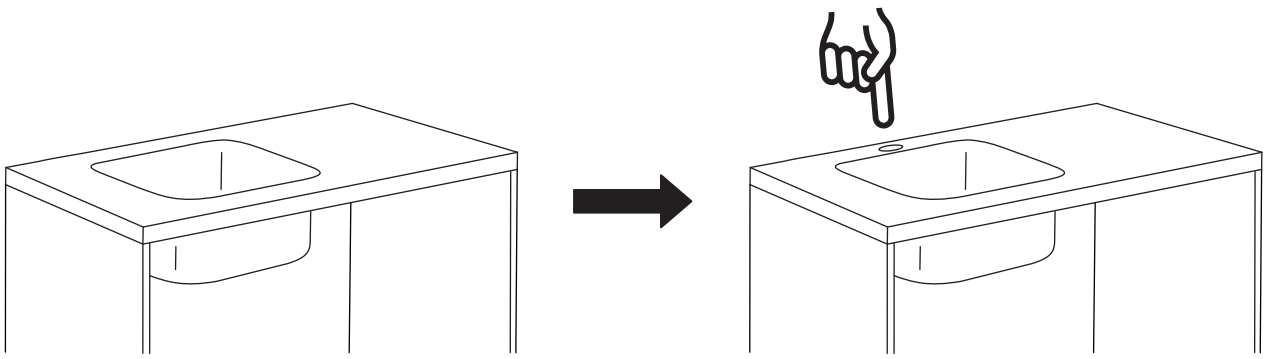
Svenska
Rekommenderat arbetstryck:
1,4 - 5 bar
Max. statiskt tryck: 10 bar
Max. provningstryck: 16 bar

English
Recommended working
pressure: 1,4 - 5 bar
Max. static pressure: 10 bar
Max. test pressure: 16 bar



G3/8 (R10)





1

Svenska

Täta de öppna ytorna med silikon för att förhindra vatten från att tränga in i bänkskivan vid eventuellt läckage. Silikon medföljer ej.

English

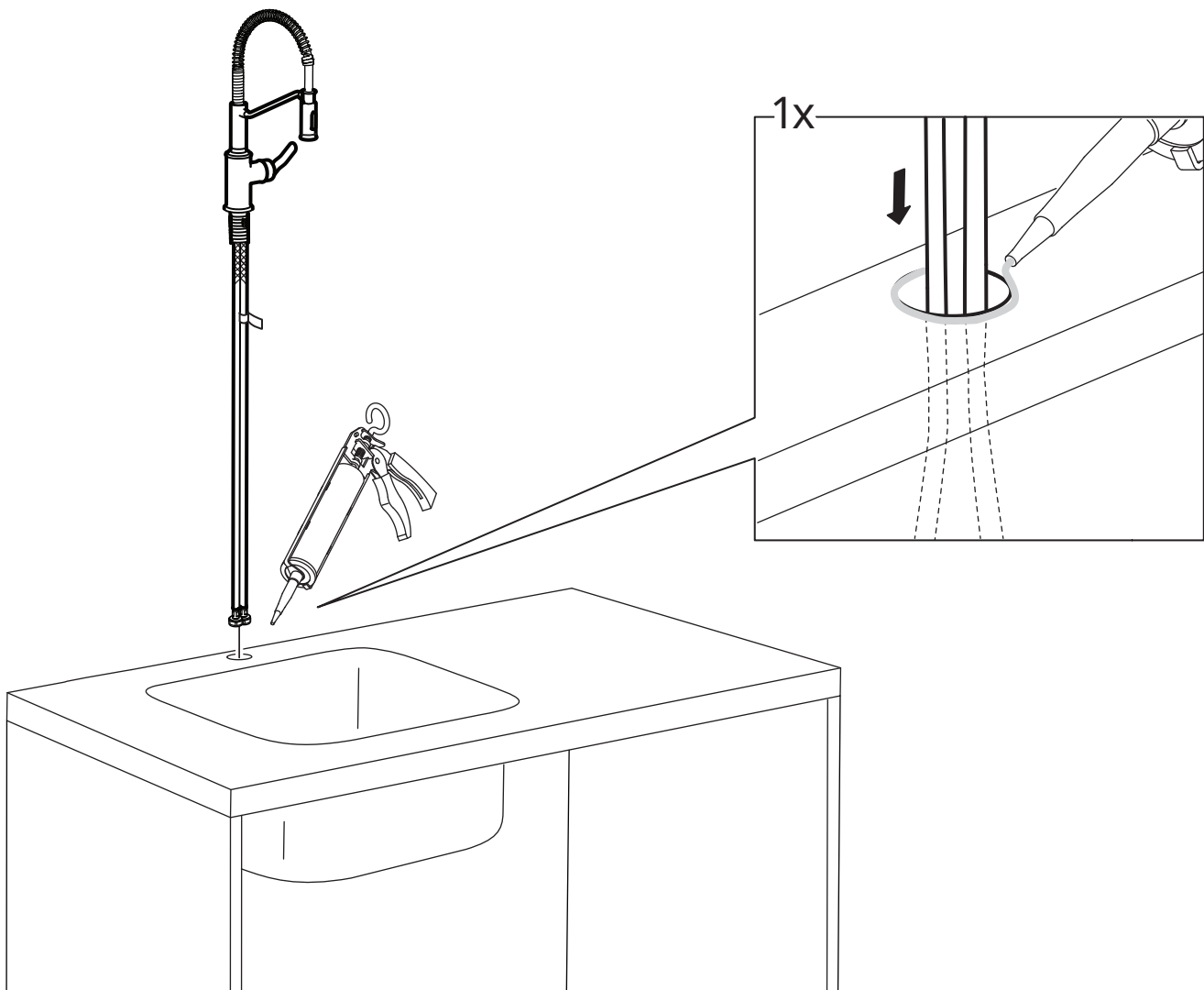
Seal the open surfaces with silicone to prevent water from penetrating the worktop upon any leaks. Silicone is not included.

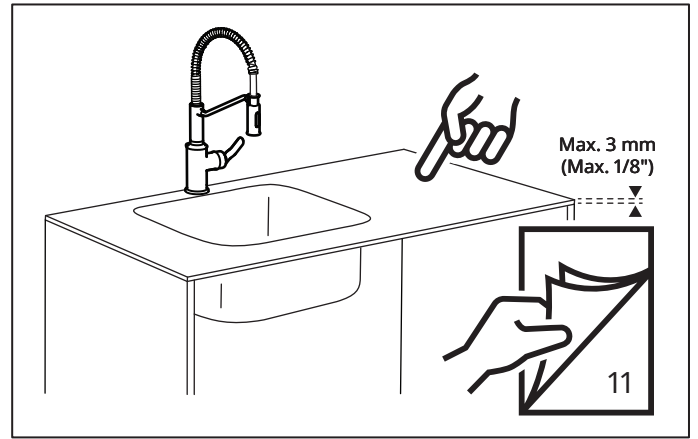
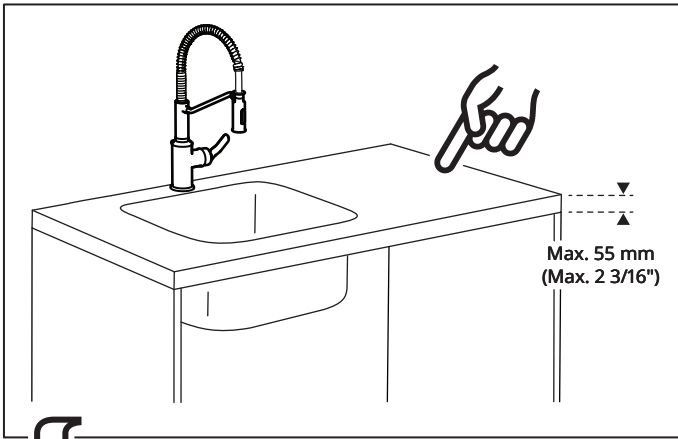
Svenska

Silikonfogmassan måste vara vatten- och mögelbeständig och lämplig för installationen, i enlighet med EN 15651-3, klass XS1.

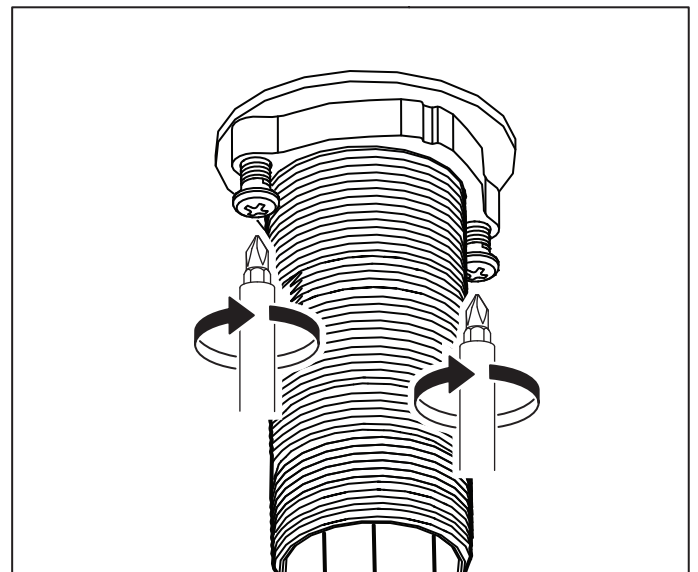
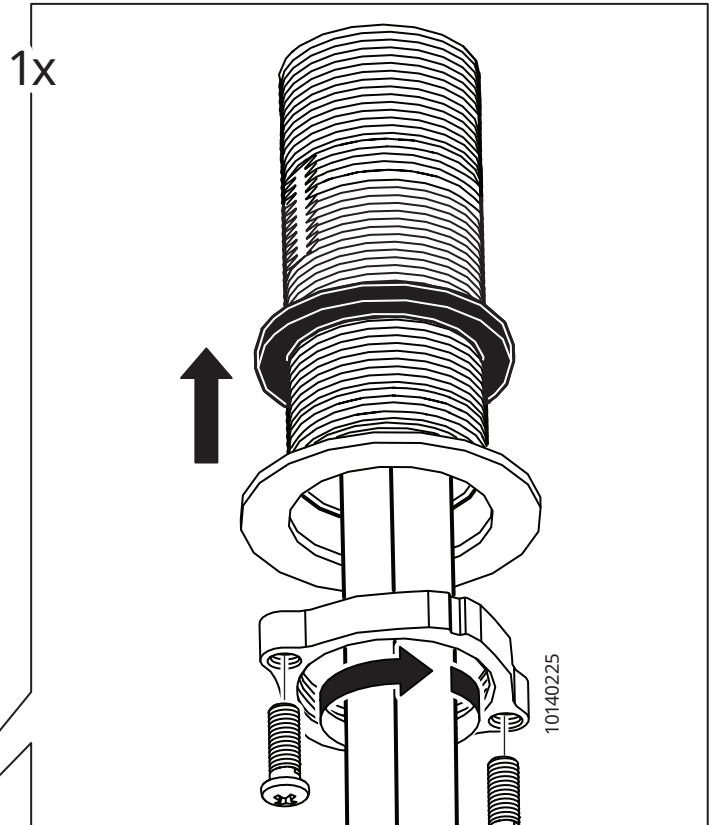
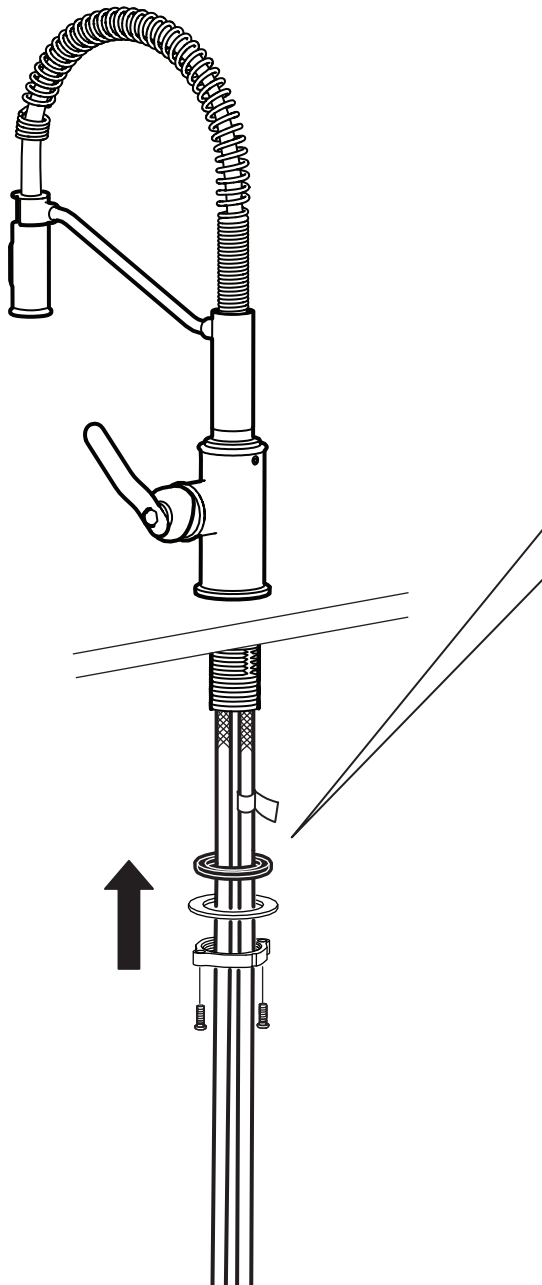
English

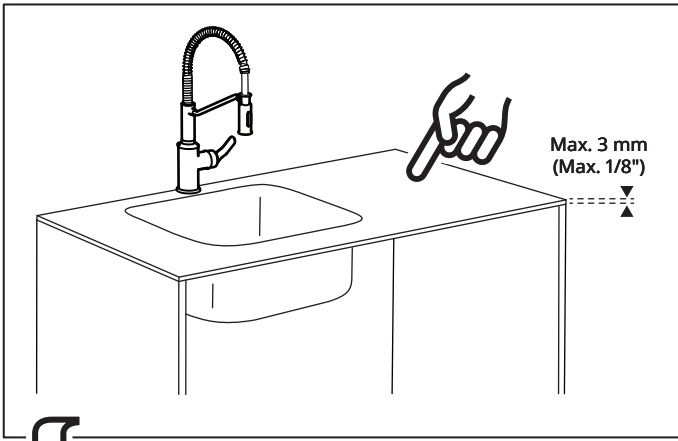
Silicone sealant must be water- and mould-resistant and suitable for the installation, according to EN 15651-3, Class XS1.



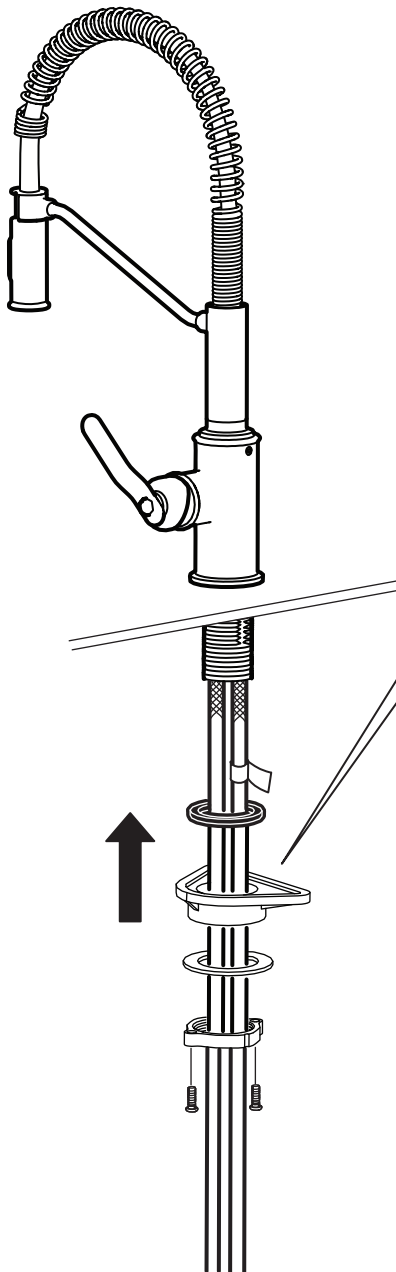


2

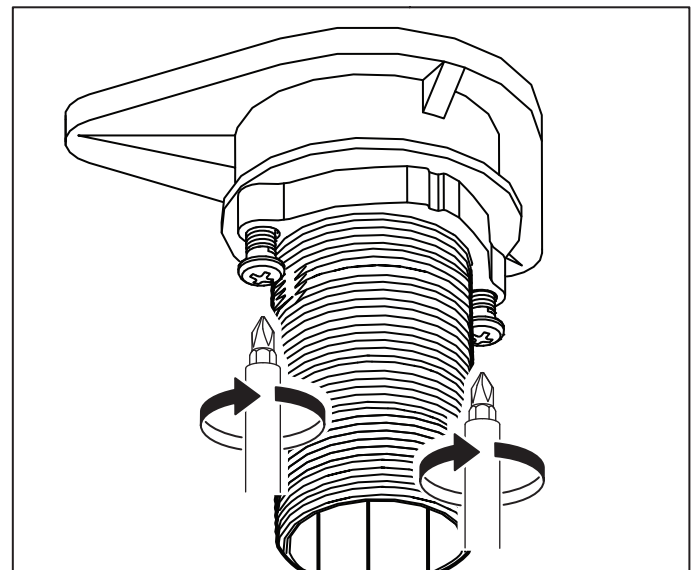
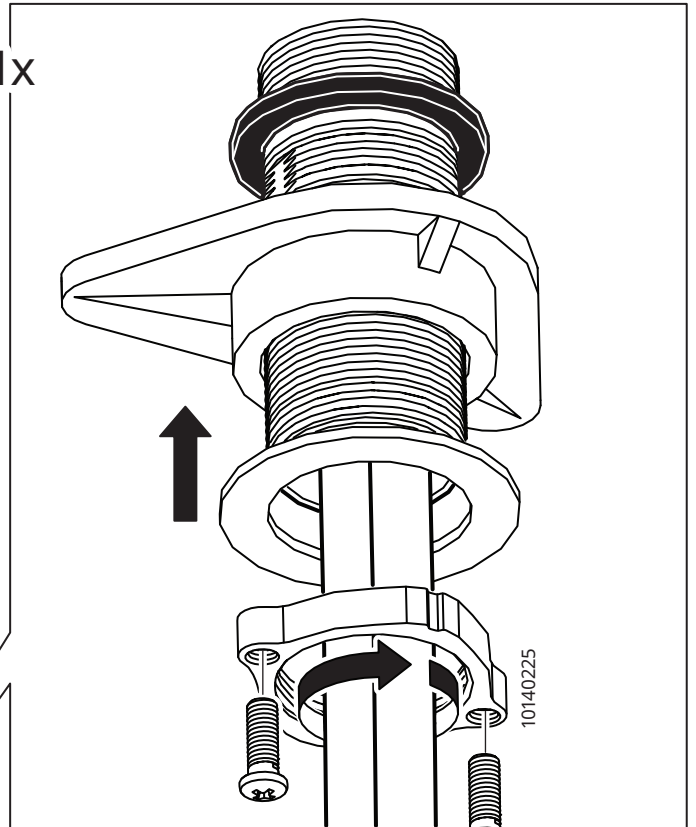


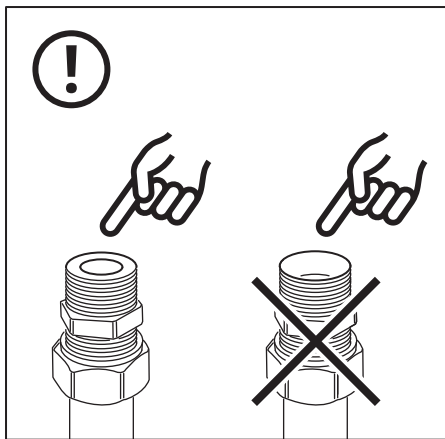
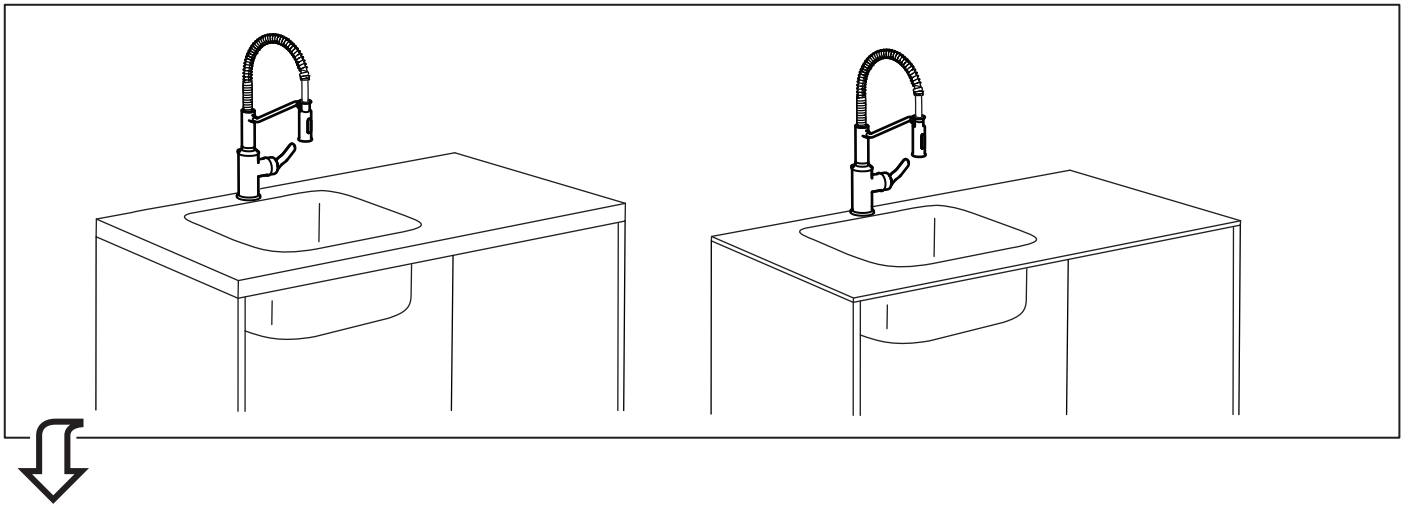


2



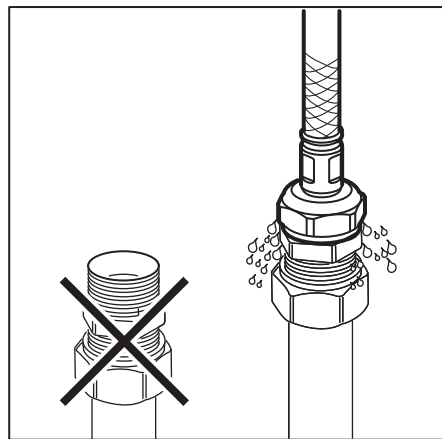
1x





Svenska
Röranslutningen måste vara plan och fri från vassa kanter.

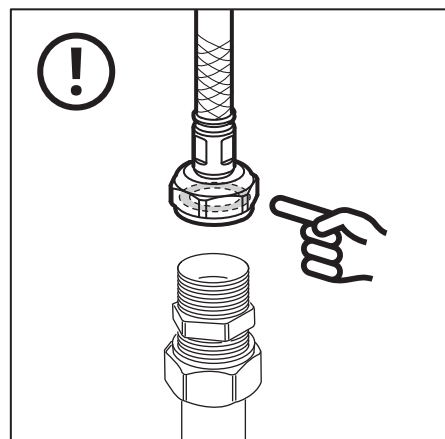
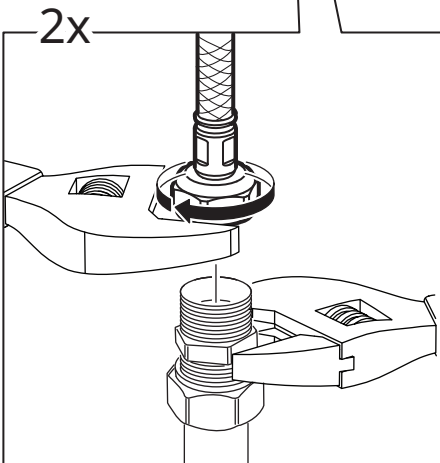
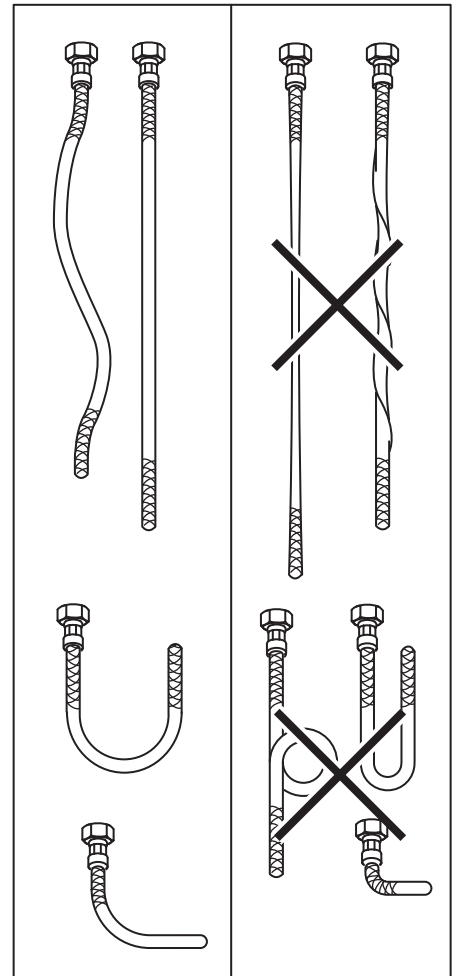
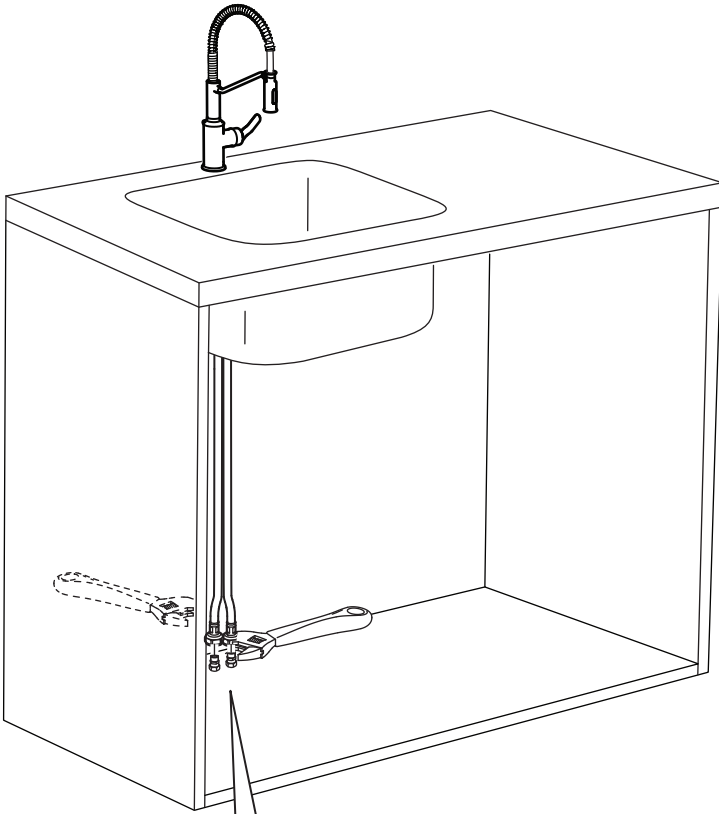
English
The pipe connection needs to be flat and free from sharp edges.

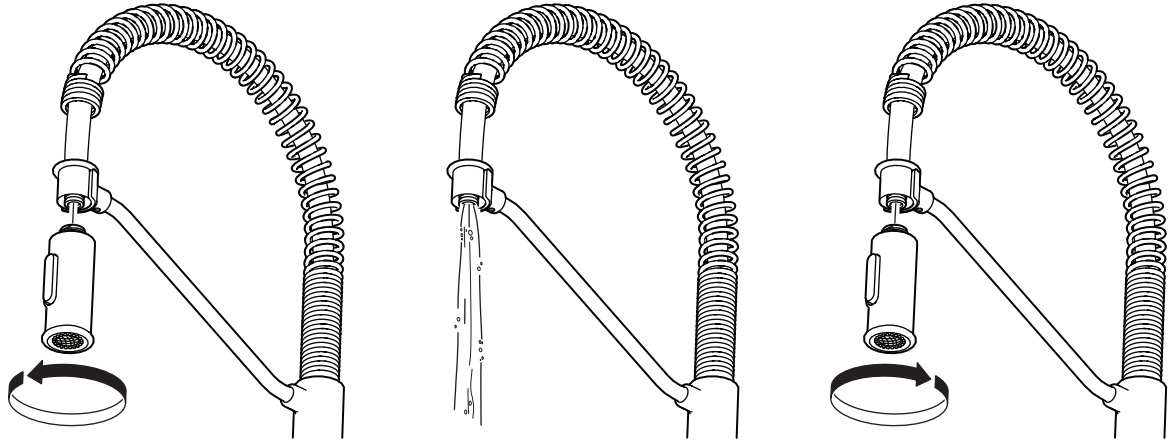


Svenska
OBS! Dra aldrig åt för hårt; slangar och packningar kan skadas.

English
IMPORTANT! Do not tighten too hard: this can damage hoses/pipes and washers.

3





Svenska

Innan användning: skruva loss handduschen och låt vatten rinna igenom 5 minuter. Skruva sedan på handduschen igen. Handduschen och kranen har en specialgånga och ska alltid användas tillsammans.

English

Before use: unscrew the hand spray and allow the water to run freely for 5 minutes. Then screw the hand spray back in place. The hand spray and tap have a special thread and should always be used together.

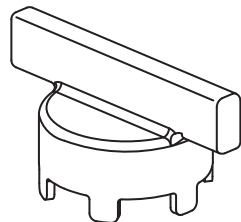
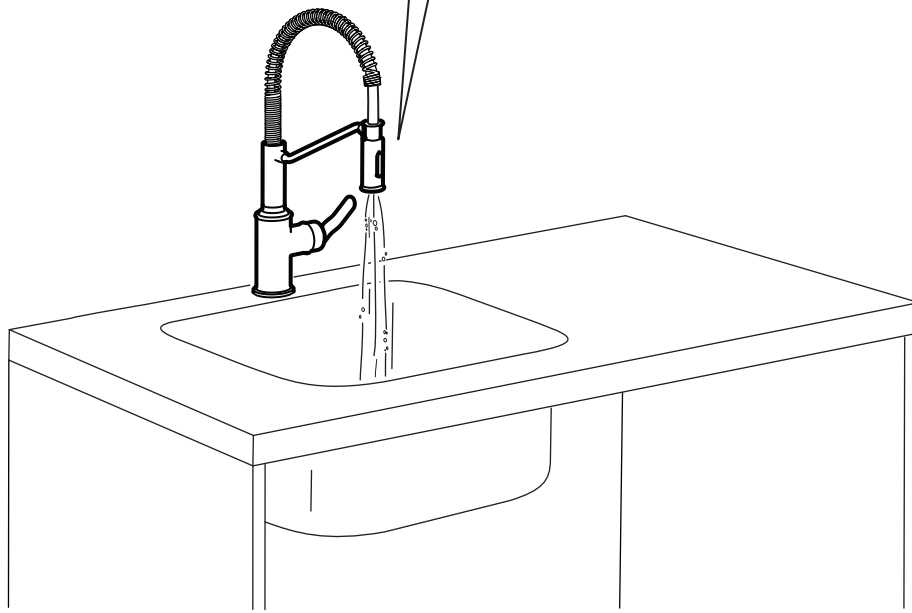
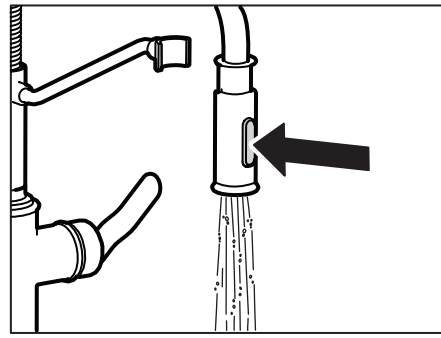
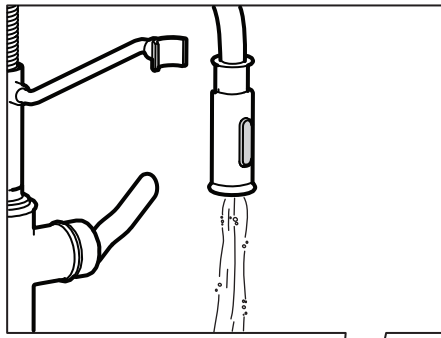


Svenska

Kontrollera regelbundet att installationen är tät.

English

Check at regular intervals to make sure that the installation is not leaking.



10140211

