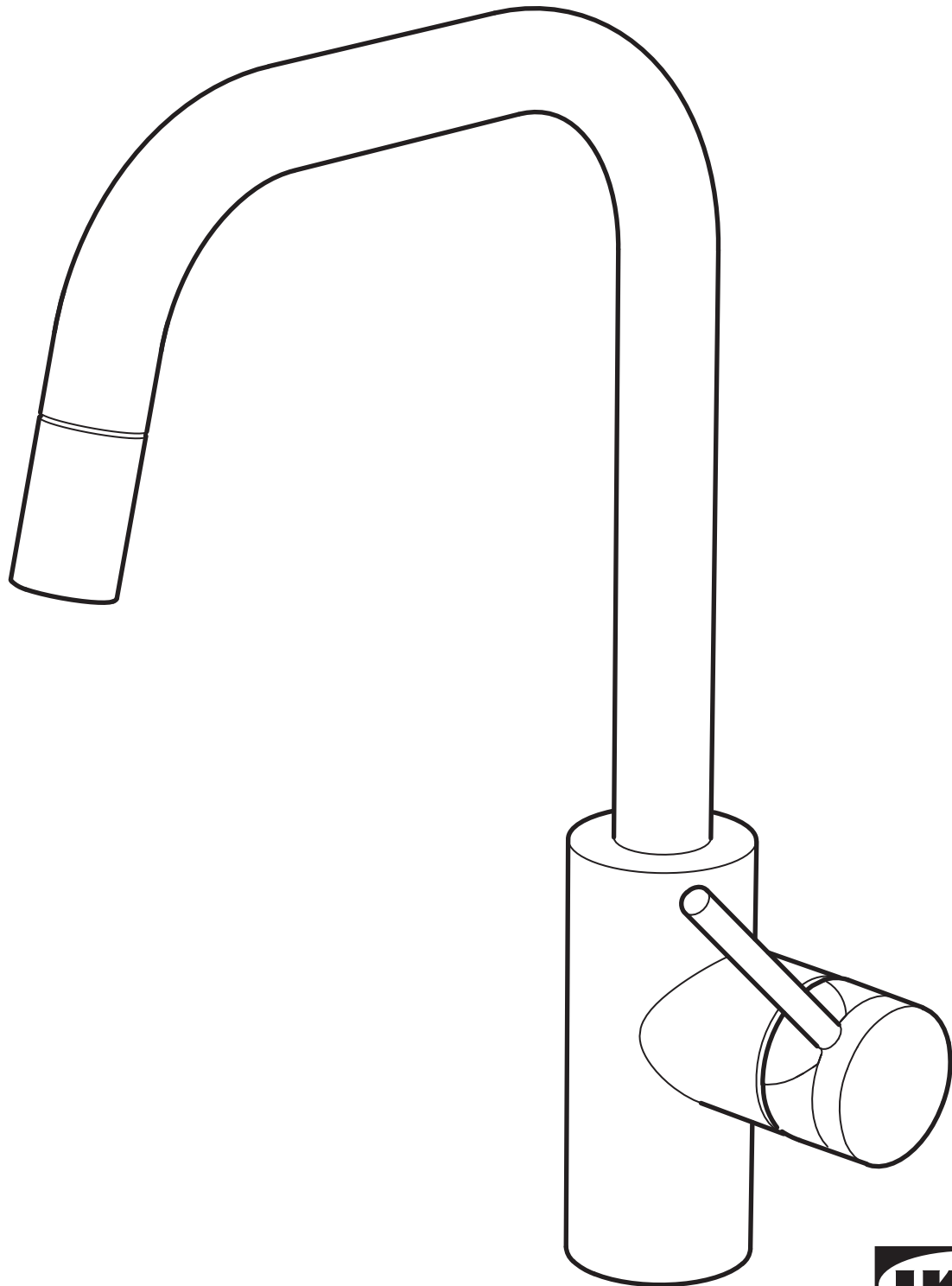


# ÄLMAREN



Design and Quality  
IKEA of Sweden

**Svenska****Innehåll**

Verktyg och reservdelar	4
Illustration av produkt, delar och artikelnummer	6
Montering av produkt	7

**English****Contents**

Tools and spare parts	4
Illustration of product, parts and part numbers	6
Product assembly	7



**Svenska**

Stäng av huvudkranen innan du byter blandare.

**English**

Switch off main shut-off valve before changing mixer tap.



**Svenska**

Installationen ska utföras i enlighet med branschreglerna Säker Vatteninstallation.

**English**

Installation shall be carried out in accordance with Industry Regulations Säker Vatteninstallation.



**Accepterad**  
monteringsanvisning  
2026:1



TG 1719



1913

EN 817 | EN 1717

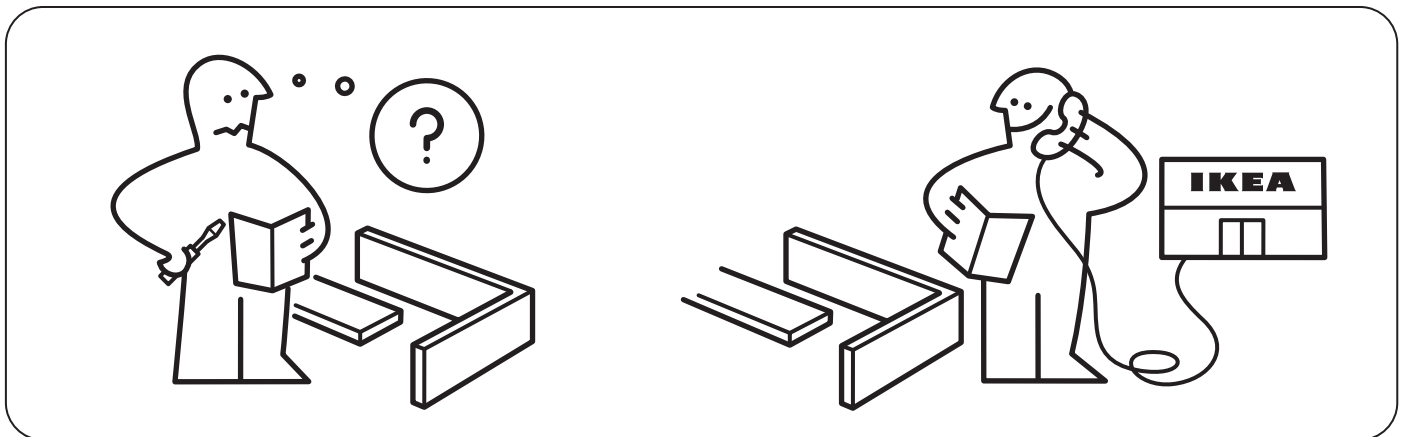
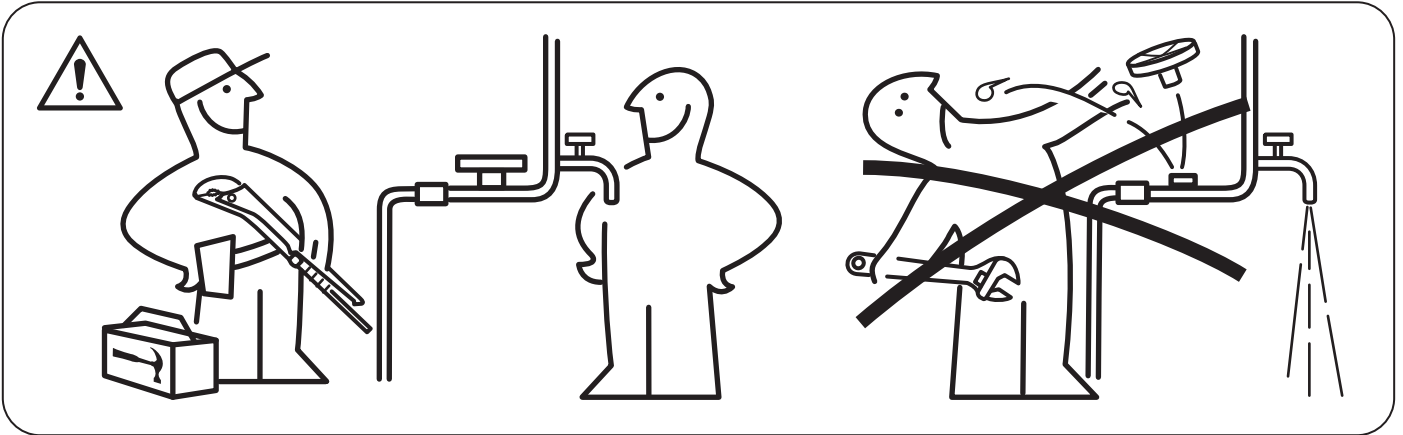
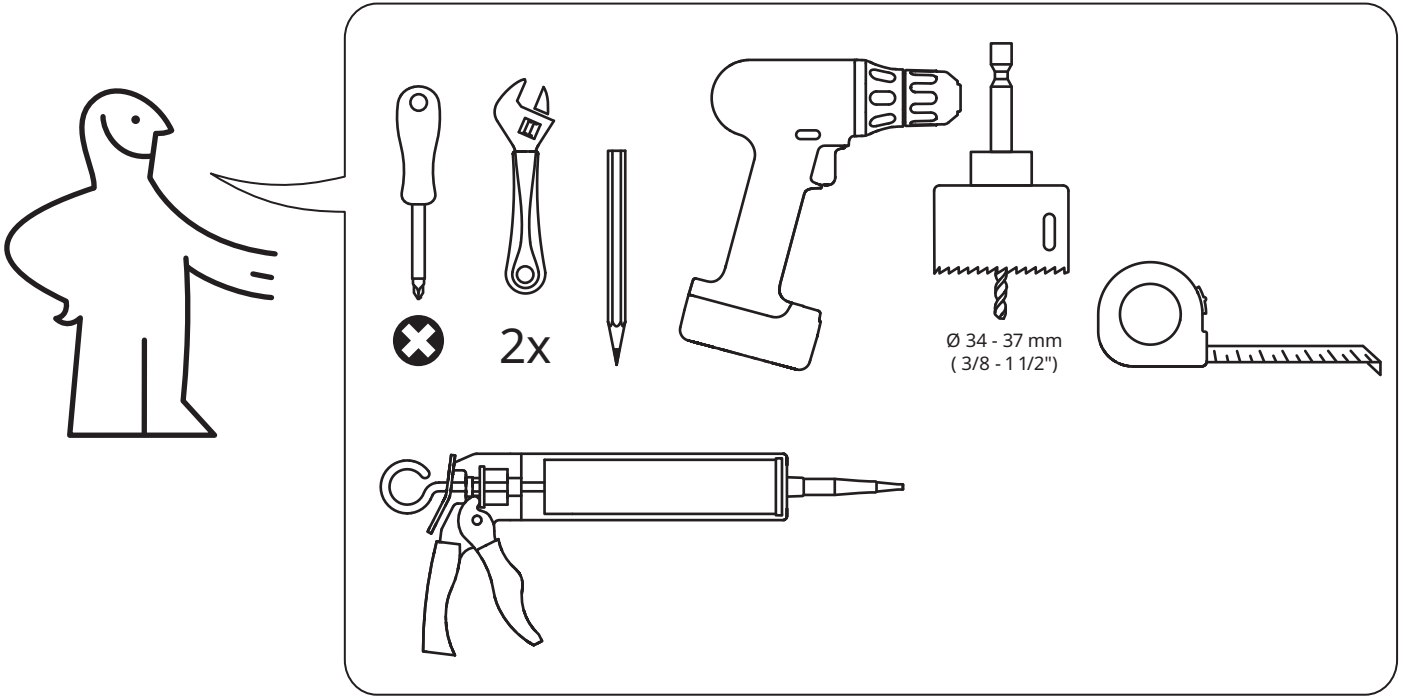
**Svenska**

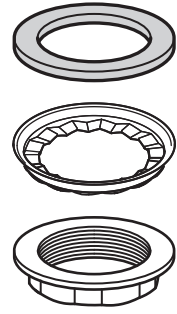
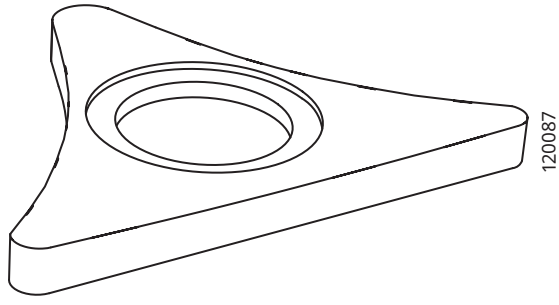
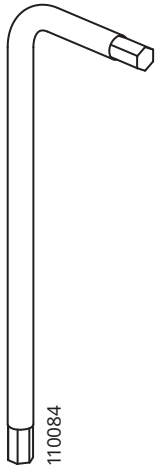
RSK Nr: 8312179, 8312348

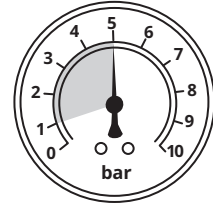
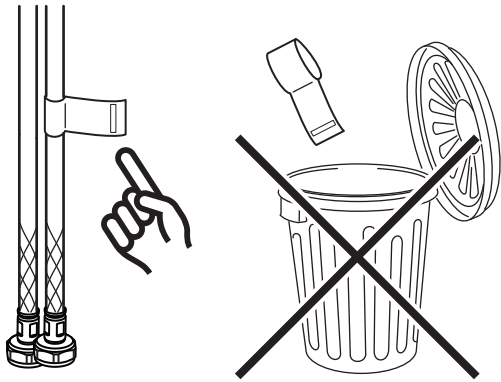
**English**

RSK No: 8312179, 8312348









**Svenska**

Rekommenderad  
varmvattentemperatur: 60°C  
Max. varmvattentemperatur:  
80°C

**English**

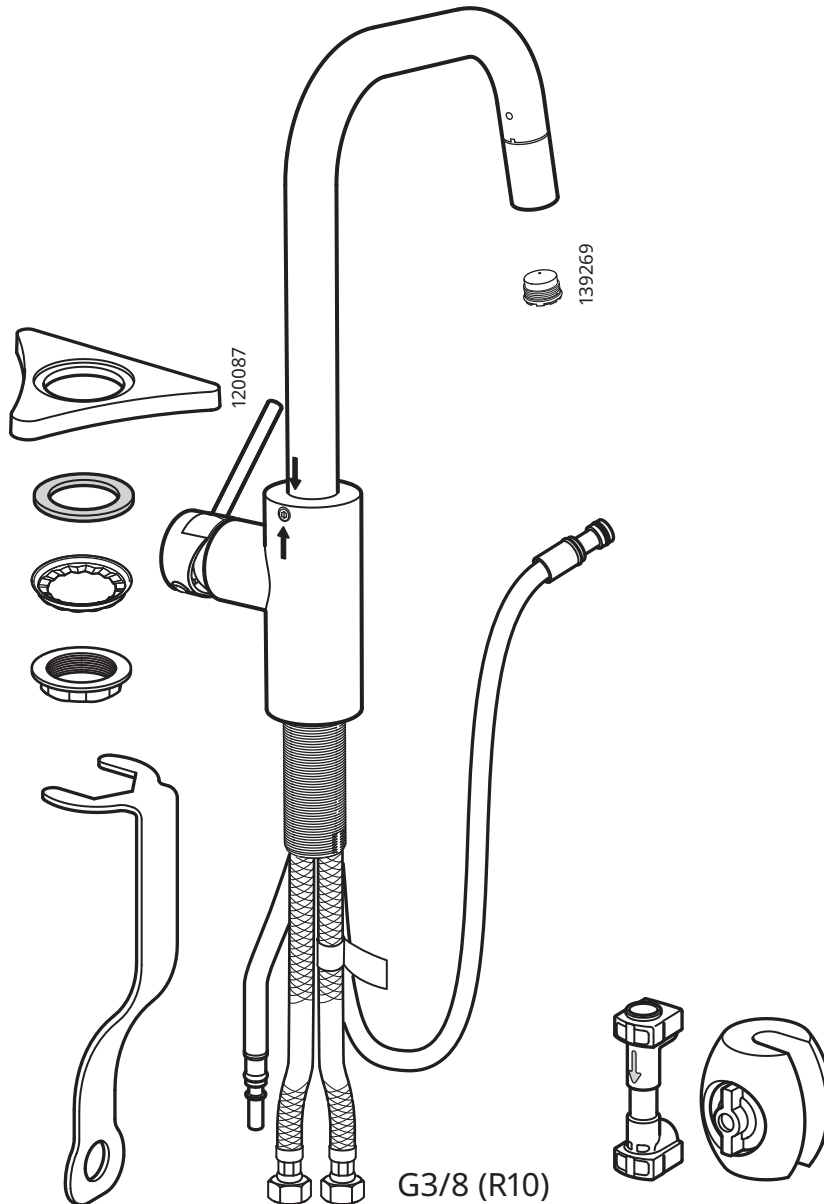
Recommended hot water  
temperature: 60°C  
Max. hot water temperature:  
80°C

**Svenska**

Rekommenderat arbetstryck:  
1 - 5 bar  
Max. statiskt tryck: 10 bar  
Max. provningstryck: 16 bar

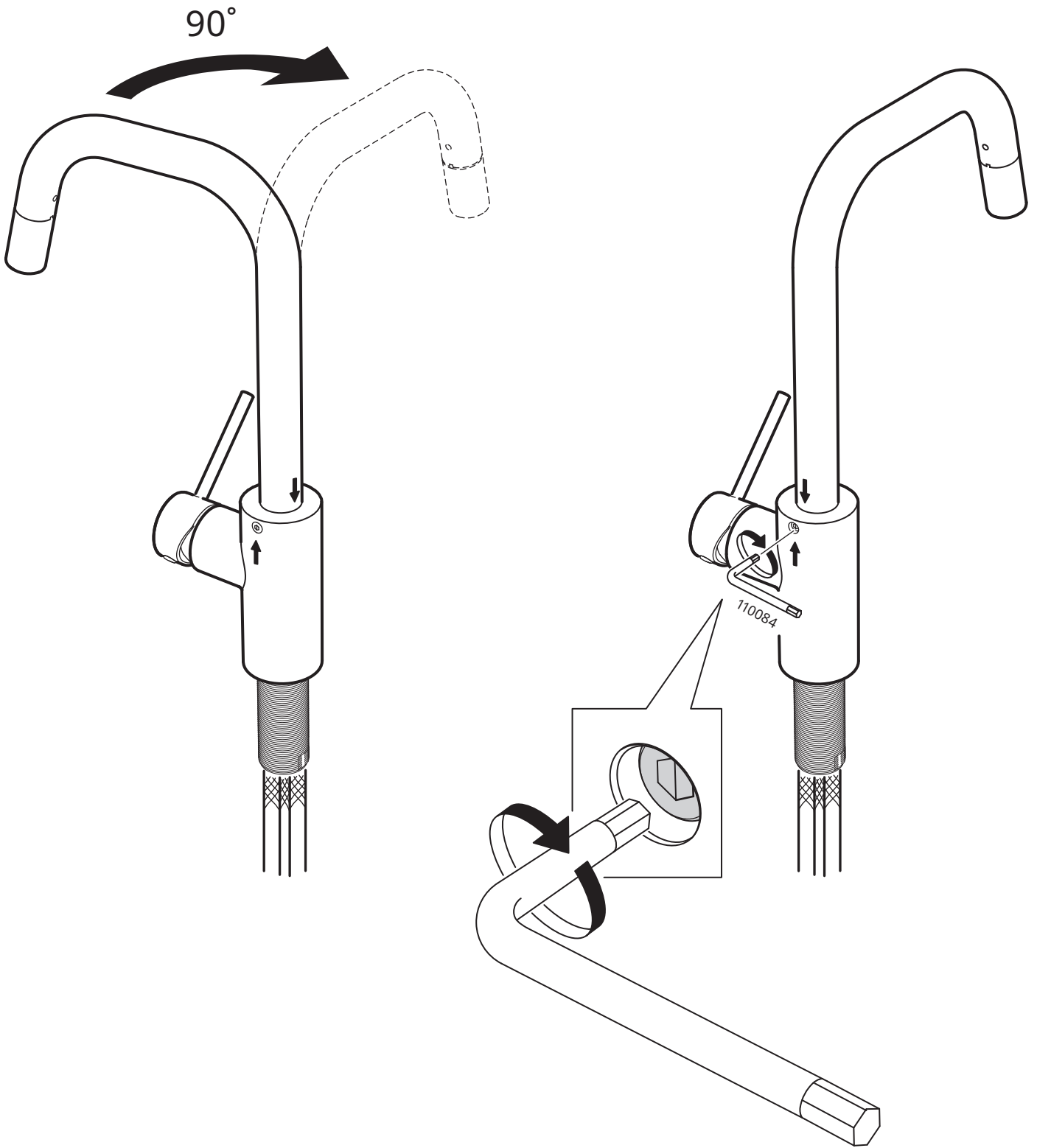
**English**

Recommended working  
pressure: 1 - 5 bar  
Max. static pressure: 10 bar  
Max. test pressure: 16 bar



1

2



**Svenska**

Täta de öppna ytorna med silikon för att förhindra vatten från att tränga in i bänkskivan vid eventuellt läckage. Silikon medföljer ej.

**English**

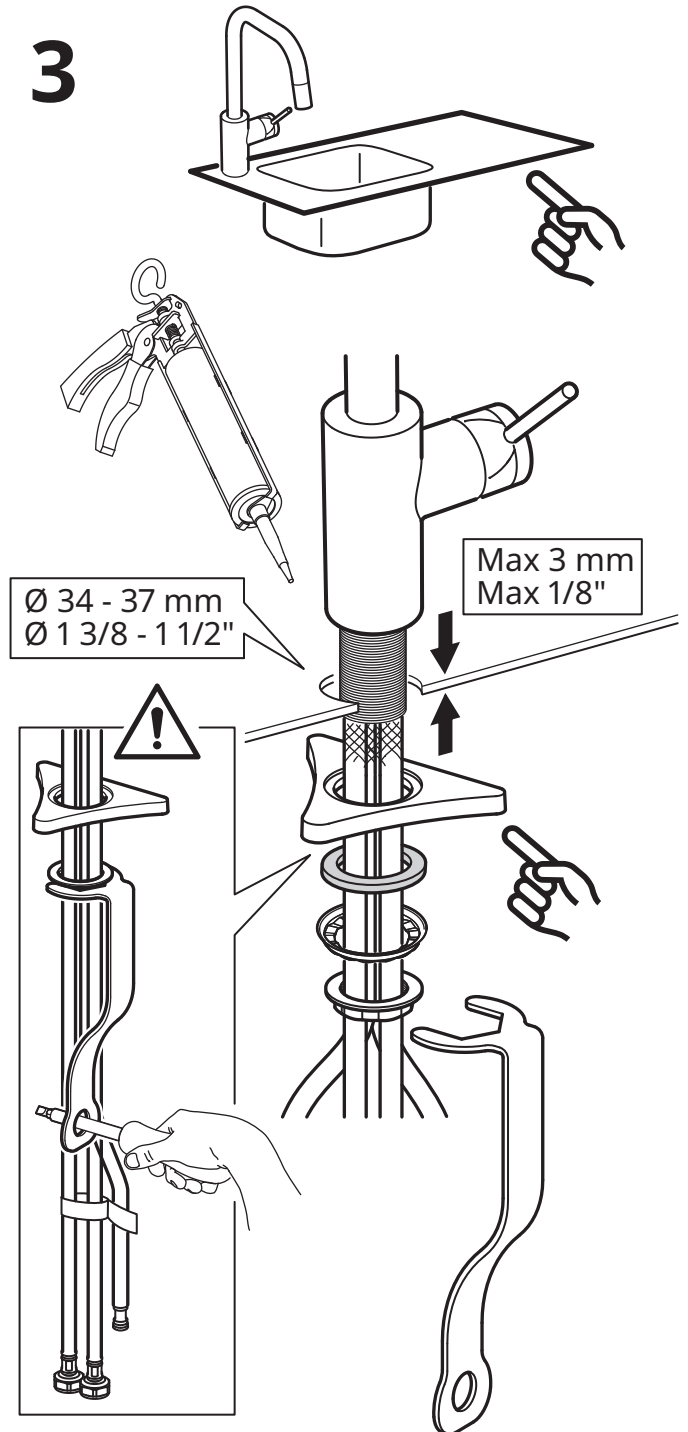
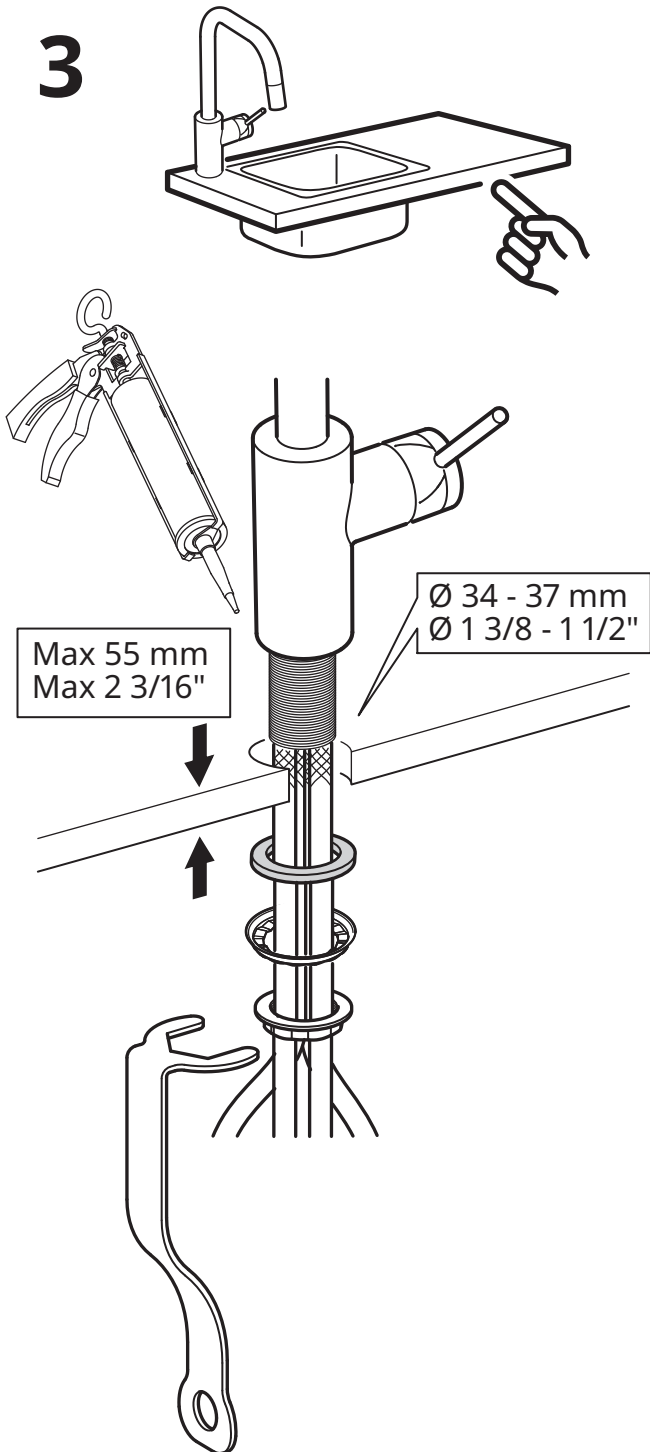
Seal the open surfaces with silicone to prevent water from penetrating the worktop upon any leaks. Silicone is not included.

**Svenska**

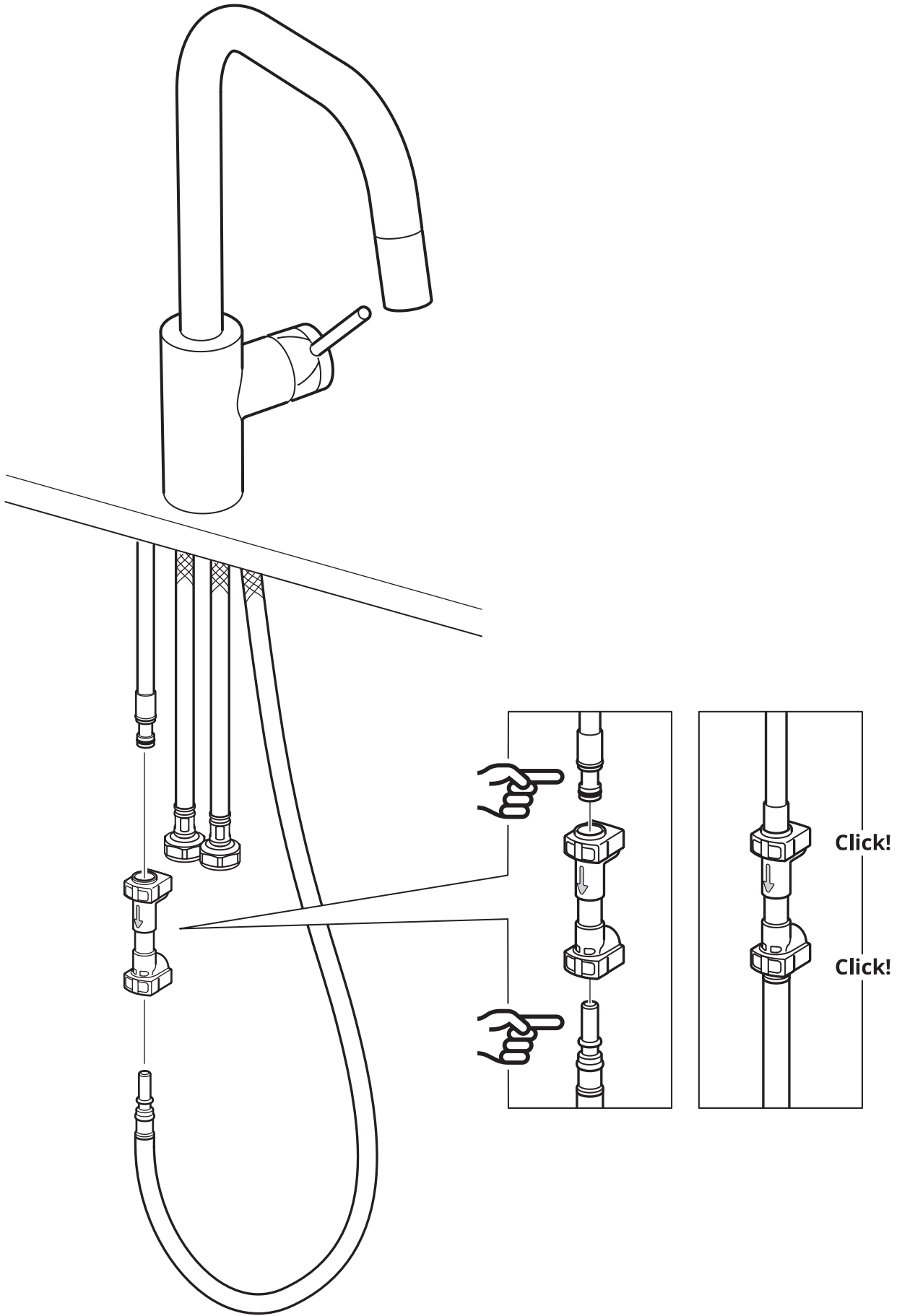
Silikonfogmassan måste vara vatten- och mögelbeständig och lämplig för installationen, i enlighet med EN 15651-3, klass XS1.

**English**

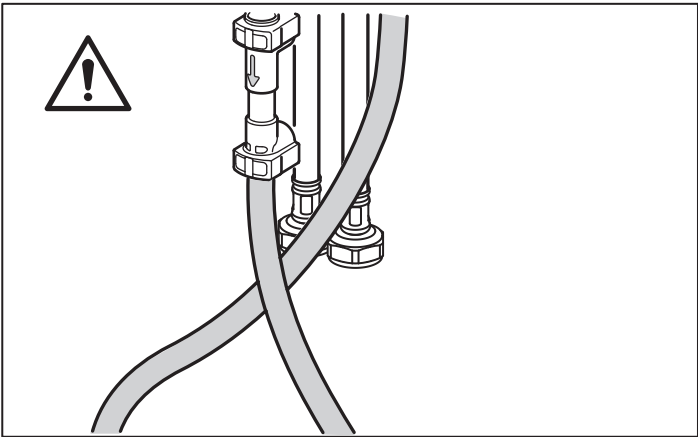
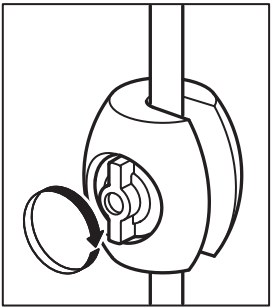
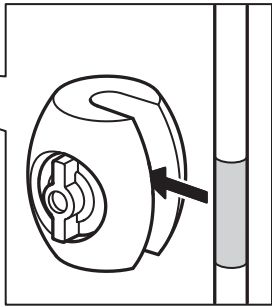
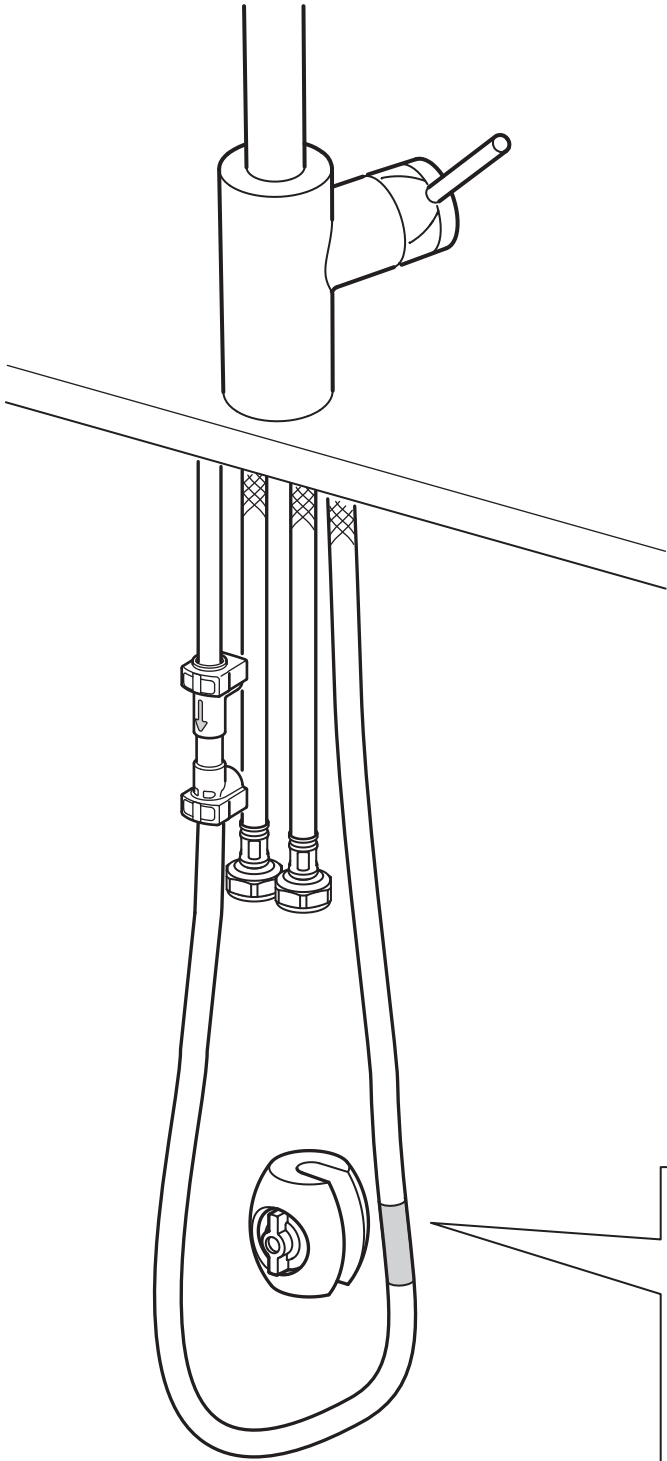
Silicone sealant must be water- and mould-resistant and suitable for the installation, according to EN 15651-3, Class XS1.



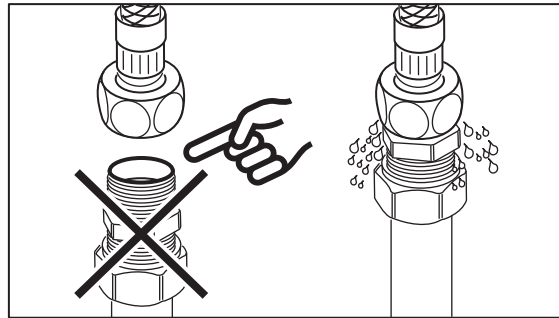
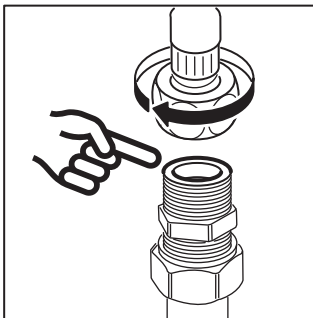
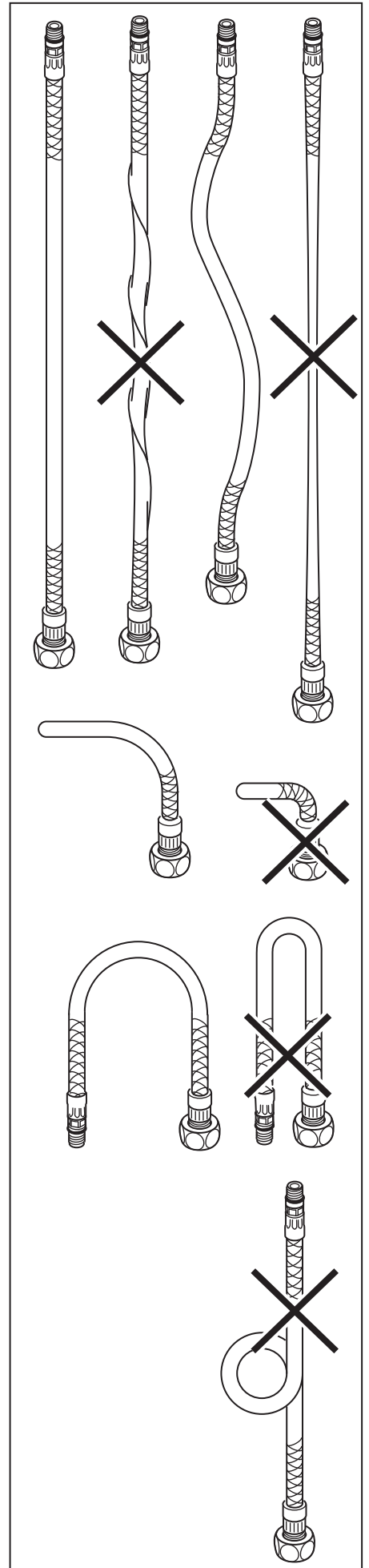
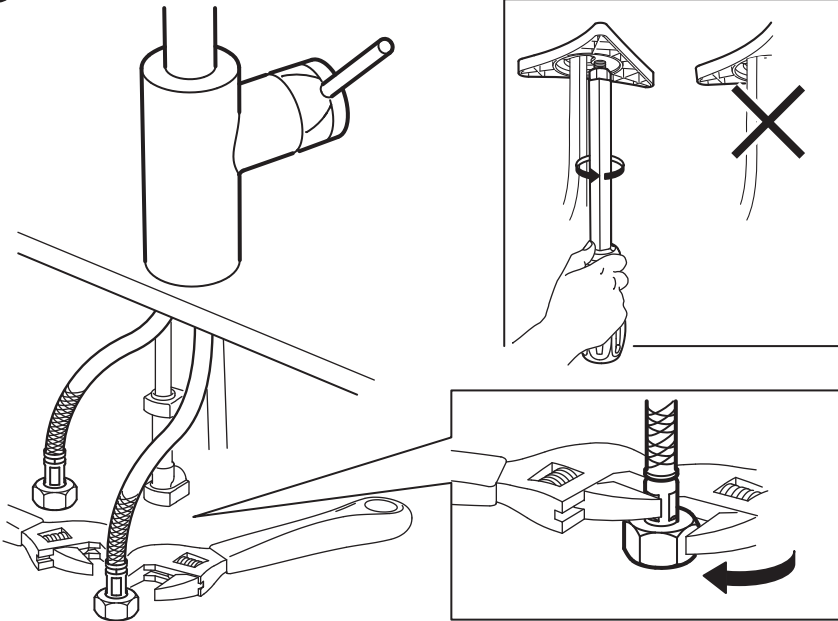
4



5



# 6



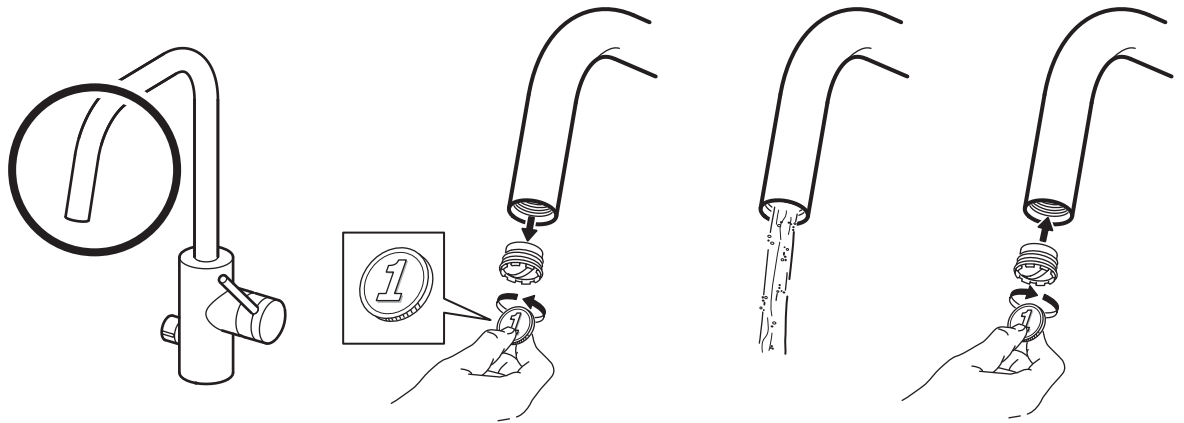
**i**

**Svenska**  
Kontrollera regelbundet att installationen är tät.

**English**  
Check at regular intervals to make sure that the installation is not leaking.

**Svenska**  
Röranslutningen måste vara plan och fri från vassa kanter.

**English**  
The pipe connection needs to be flat and free from sharp edges.



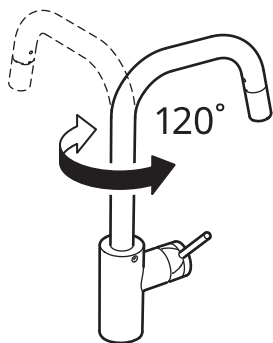
### Svenska

Innan användning: skruva loss filtret med ett mynt och låt vatten rinna igenom några minuter. Skruva sedan på filtret igen.

OBS! Dra inte åt för hårt; filtret kan skadas.

### English

Before use: Unscrew the Aerator/Flow Guide with a coin and allow the water to run freely for a few minutes. Then screw the Aerator/Flow Guide back in place up to the stop DO NOT OVER TIGHTEN.



### Svenska

Röranslutningen måste vara plan och fri från vassa kanter.

### English

The pipe connection needs to be flat and free from sharp edges.