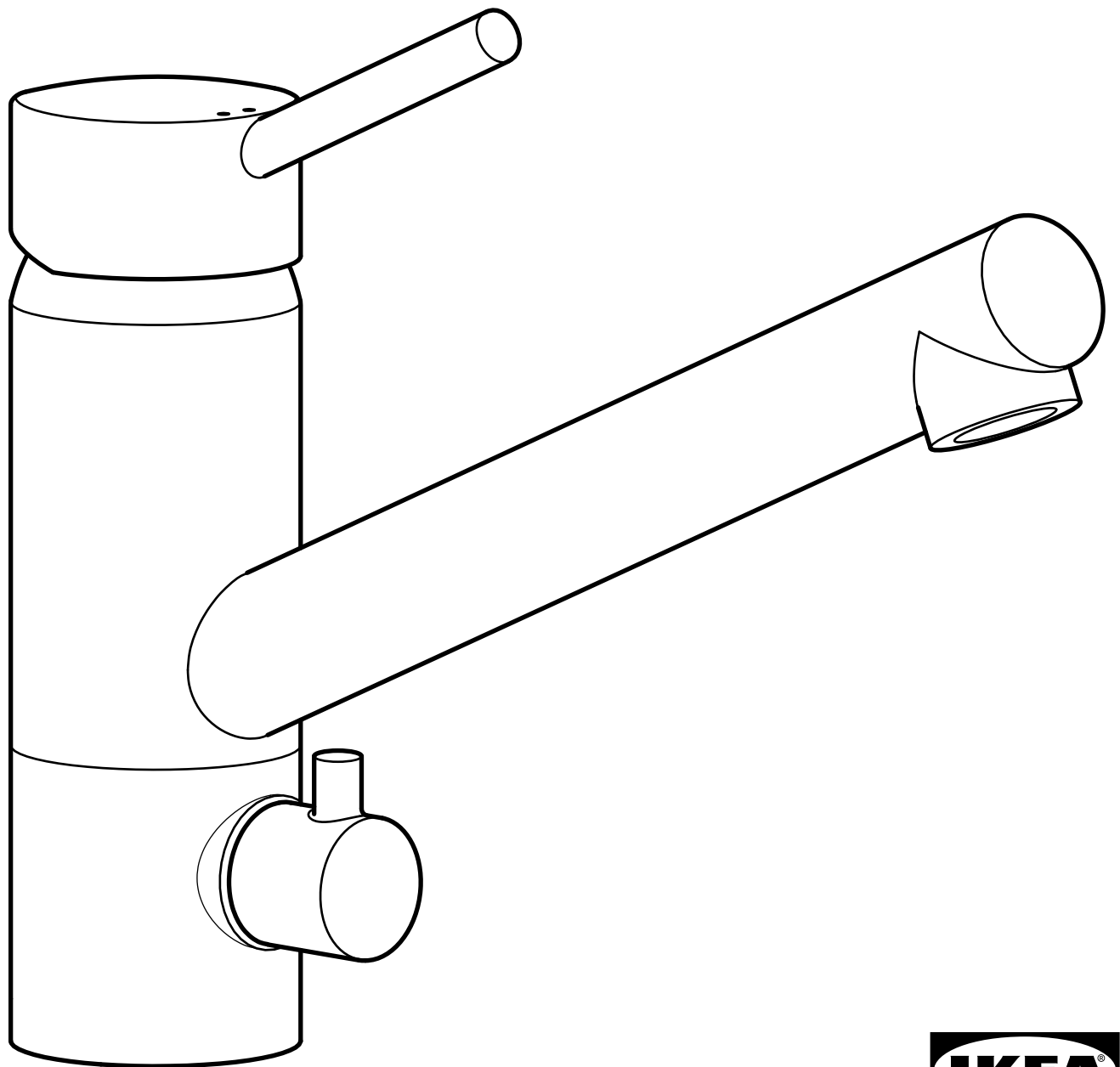


# YTTRAN



Design and Quality  
IKEA of Sweden

**Svenska****Innehåll**

Verktyg och reservdelar	4
Illustration av produkt, delar och artikelnummer	6
Montering av produkt	7

**English****Contents**

Tools and spare parts	4
Illustration of product, parts and part numbers	6
Product assembly	7



**Svenska**

Stäng av huvudkranen innan du byter blandare.

**English**

Switch off main shut-off valve before changing mixer tap.



**Svenska**

Installationen ska utföras i enlighet med branschreglerna Säker Vatteninstallation.

**English**

Installation shall be carried out in accordance with Industry Regulations Säker Vatteninstallation.



**Accepterad**  
monteringsanvisning  
2026:1



TG 1266



1913

EN 817 | EN 1717

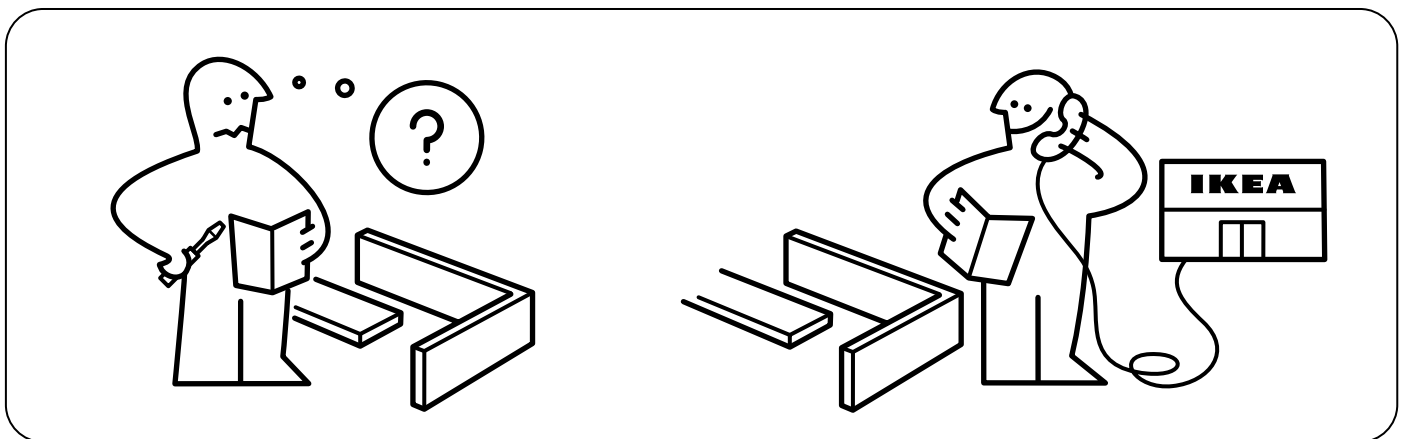
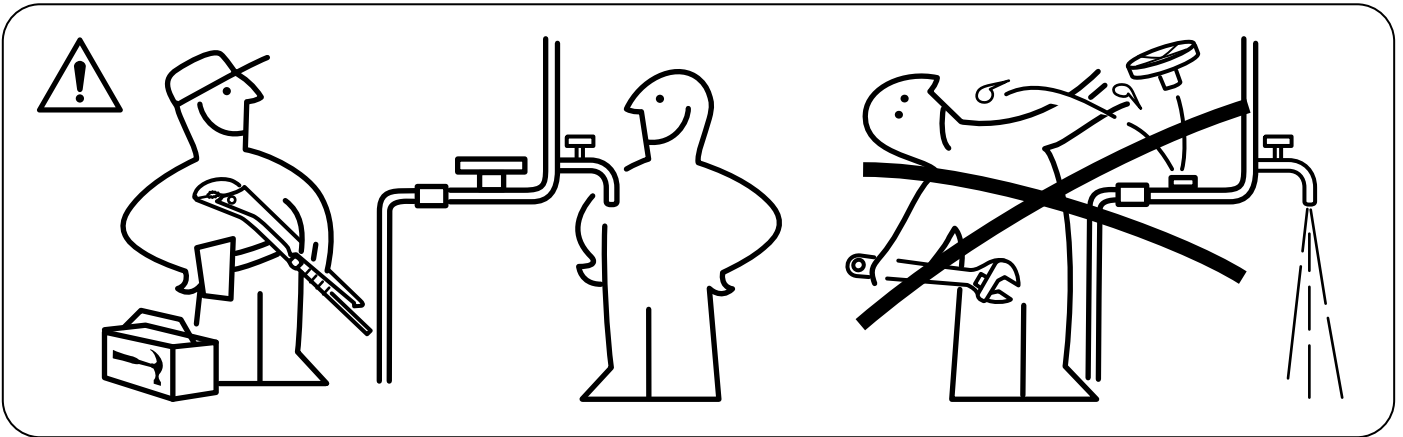
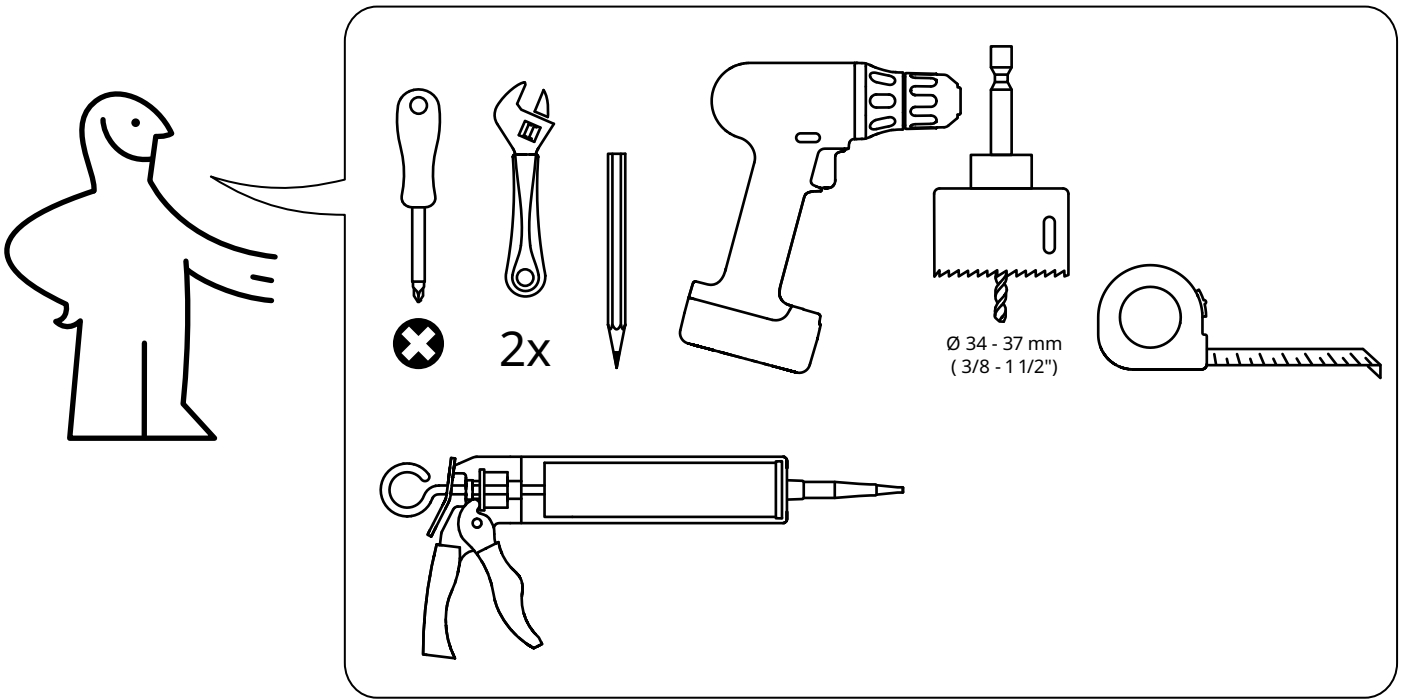
**Svenska**

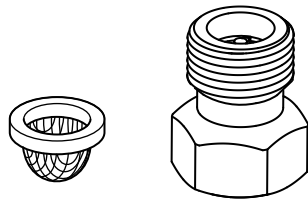
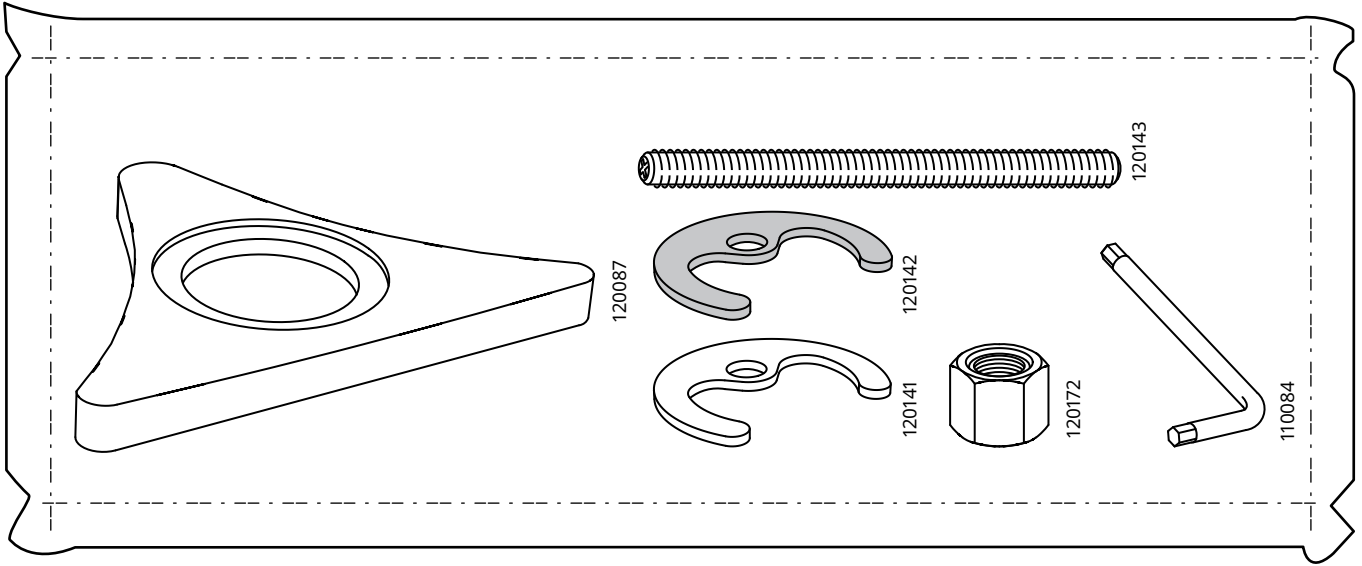
RSK Nr: 8312177

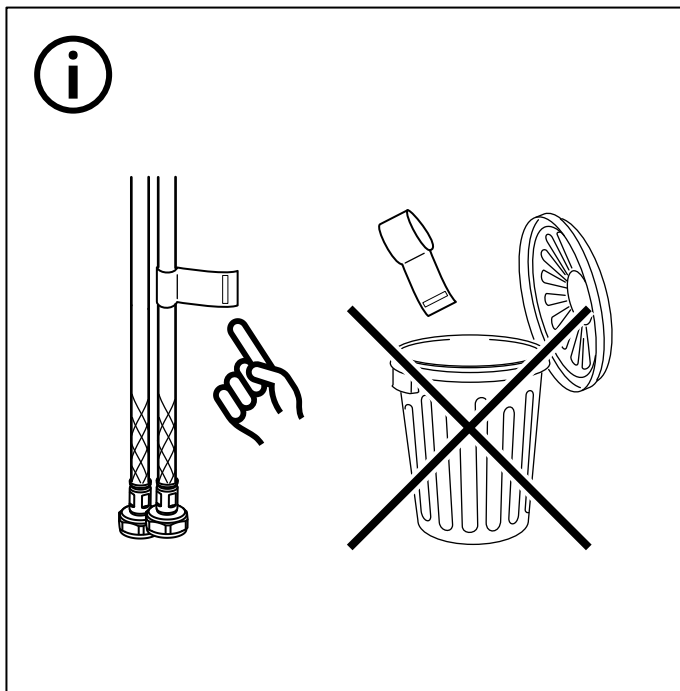
**English**

RSK No: 8312177









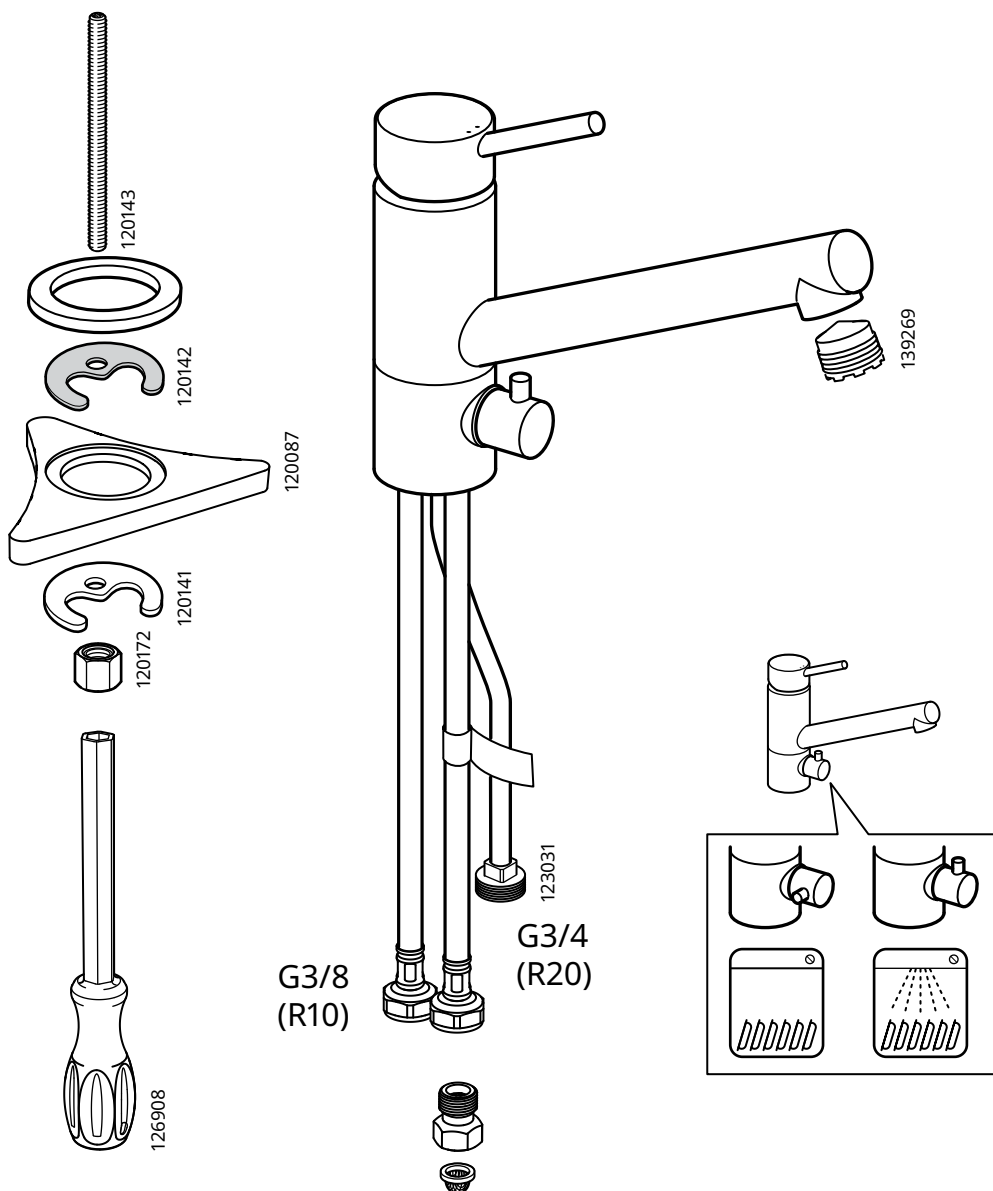
The information icon is followed by a thermometer and a pressure gauge. The thermometer shows a scale from 0 to 80 degrees Celsius. The pressure gauge shows a scale from 0 to 10 bar.

**Svenska**  
 Rekommenderad varmvattentemperatur: 60°C  
 Max. varmvattentemperatur: 80°C

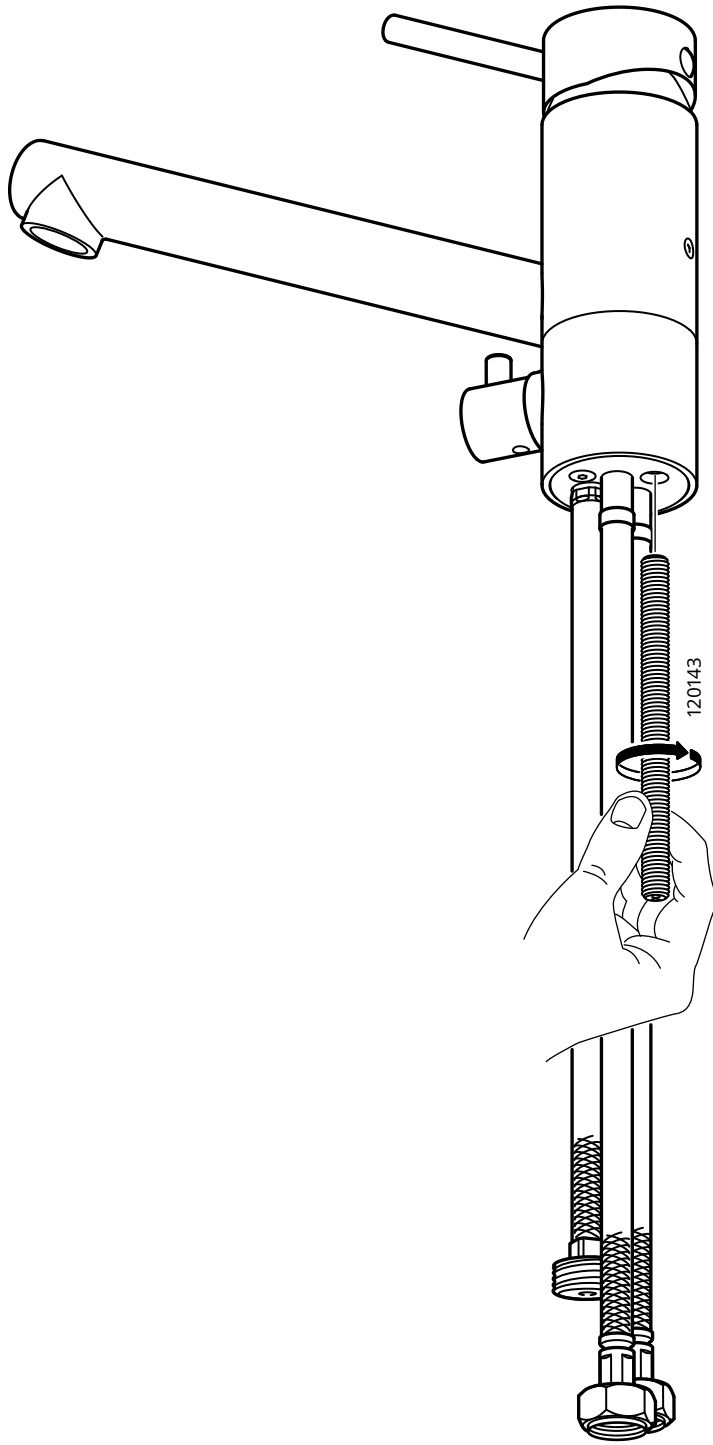
**English**  
 Recommended hot water temperature: 60°C  
 Max. hot water temperature: 80°C

**Svenska**  
 Rekommenderat arbetstryck: 1 - 5 bar  
 Max. statiskt tryck: 10 bar  
 Max. provningstryck: 16 bar

**English**  
 Recommended working pressure: 1 - 5 bar  
 Max. static pressure: 10 bar  
 Max. test pressure: 16 bar



1



**Svenska**

Täta de öppna ytorna med silikon för att förhindra vatten från att tränga in i bänkskivan vid eventuellt läckage. Silikon medföljer ej.

**English**

Seal the open surfaces with silicone to prevent water from penetrating the worktop upon any leaks. Silicone is not included.

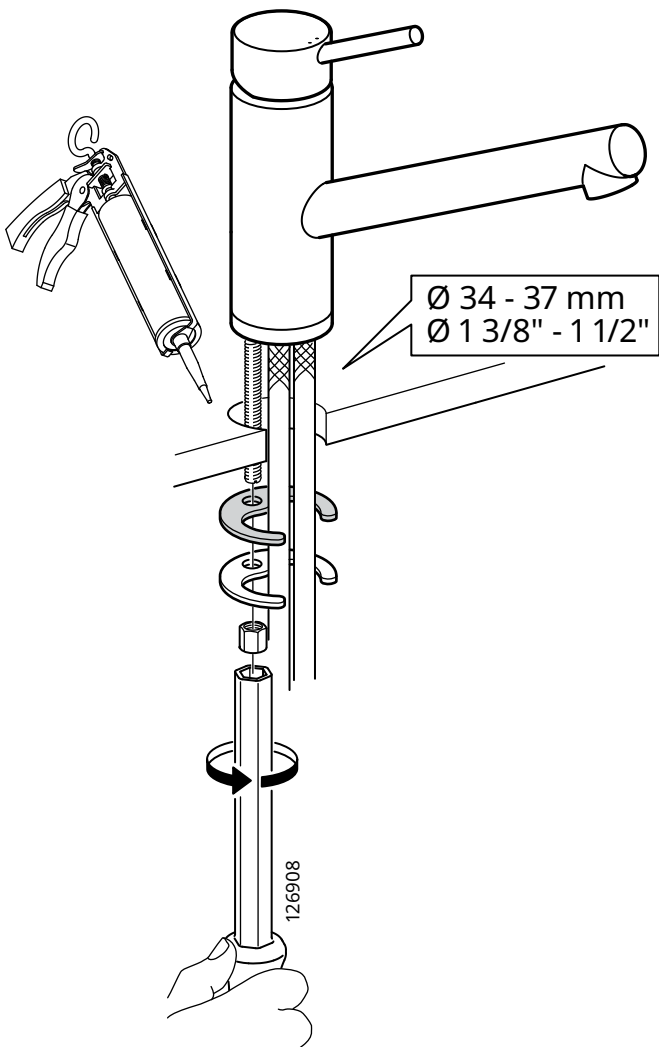
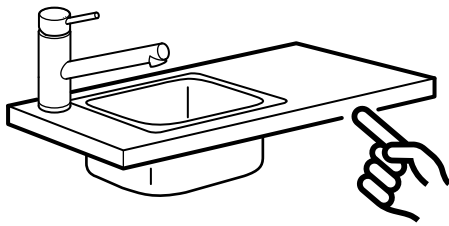
**Svenska**

Silikonfogmassan måste vara vatten- och mögelbeständig och lämplig för installationen, i enlighet med EN 15651-3, klass XS1.

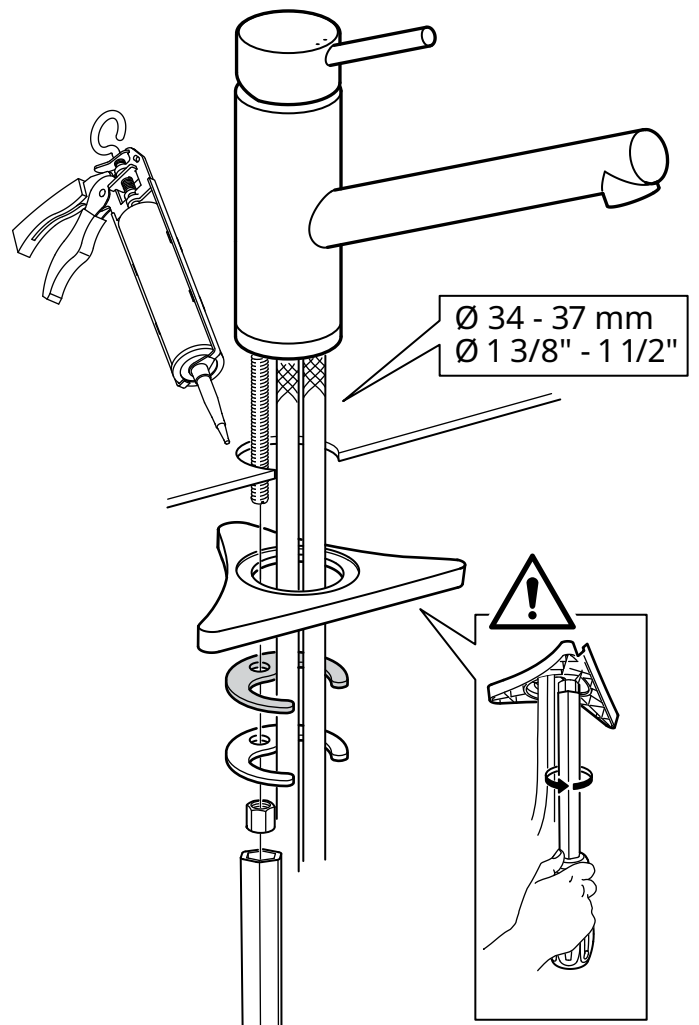
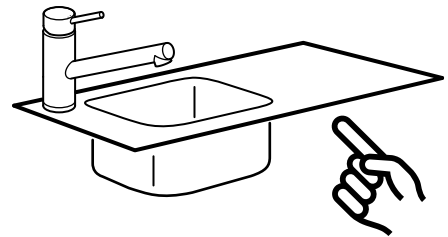
**English**

Silicone sealant must be water- and mould-resistant and suitable for the installation, according to EN 15651-3, Class XS1.

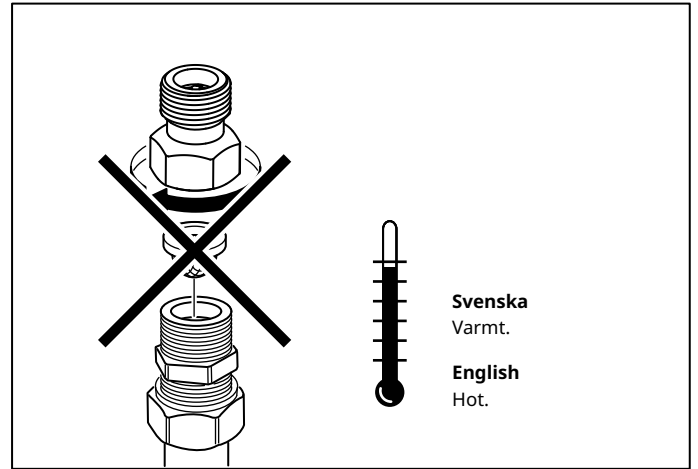
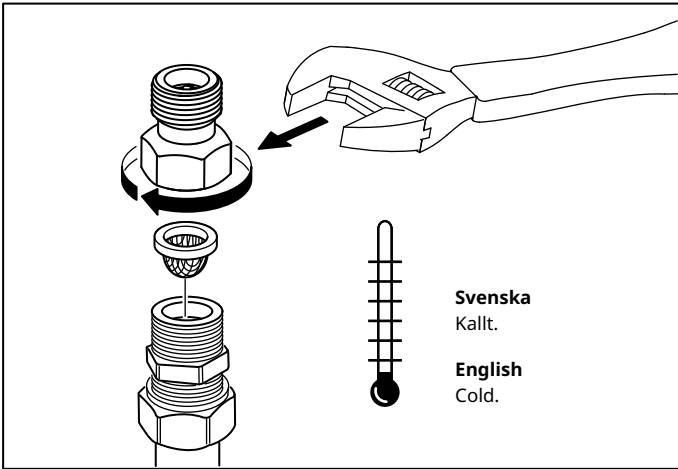
**2**

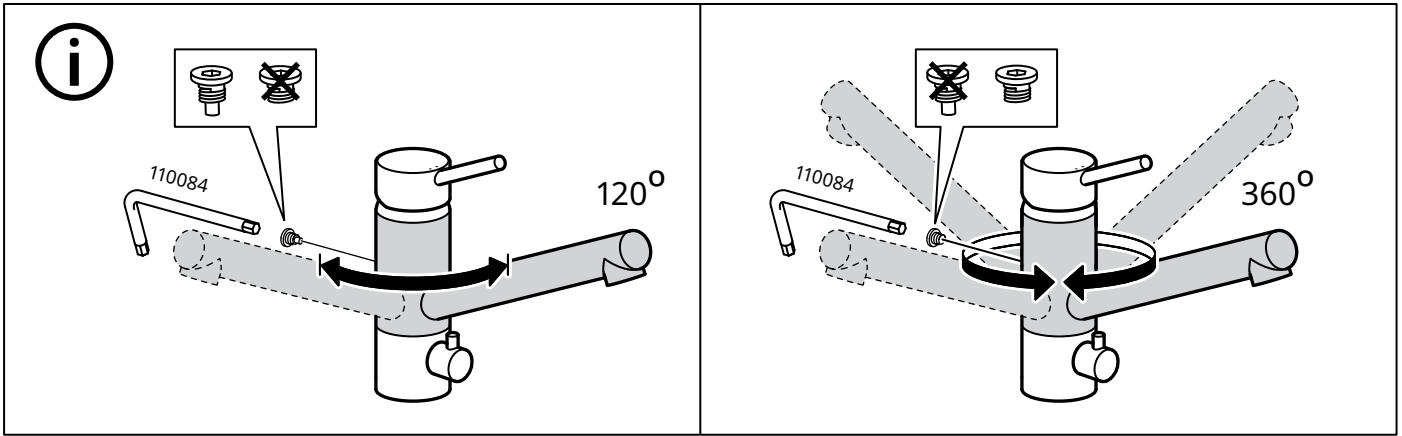


**2**

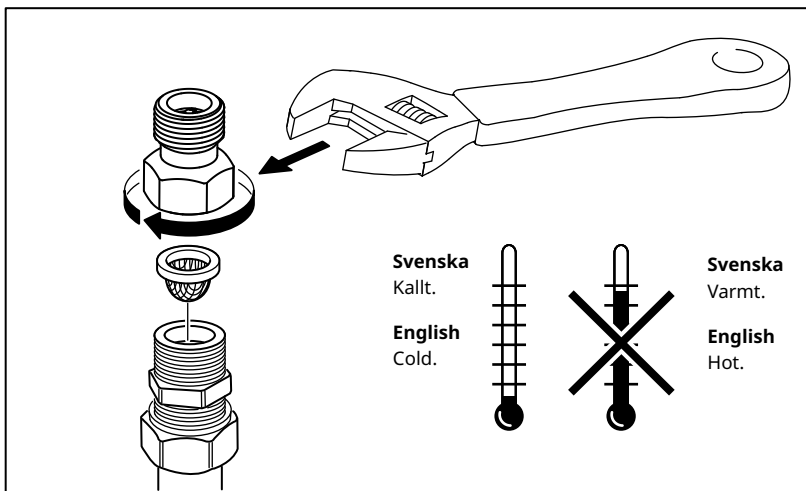


# 3





# 4



**i**

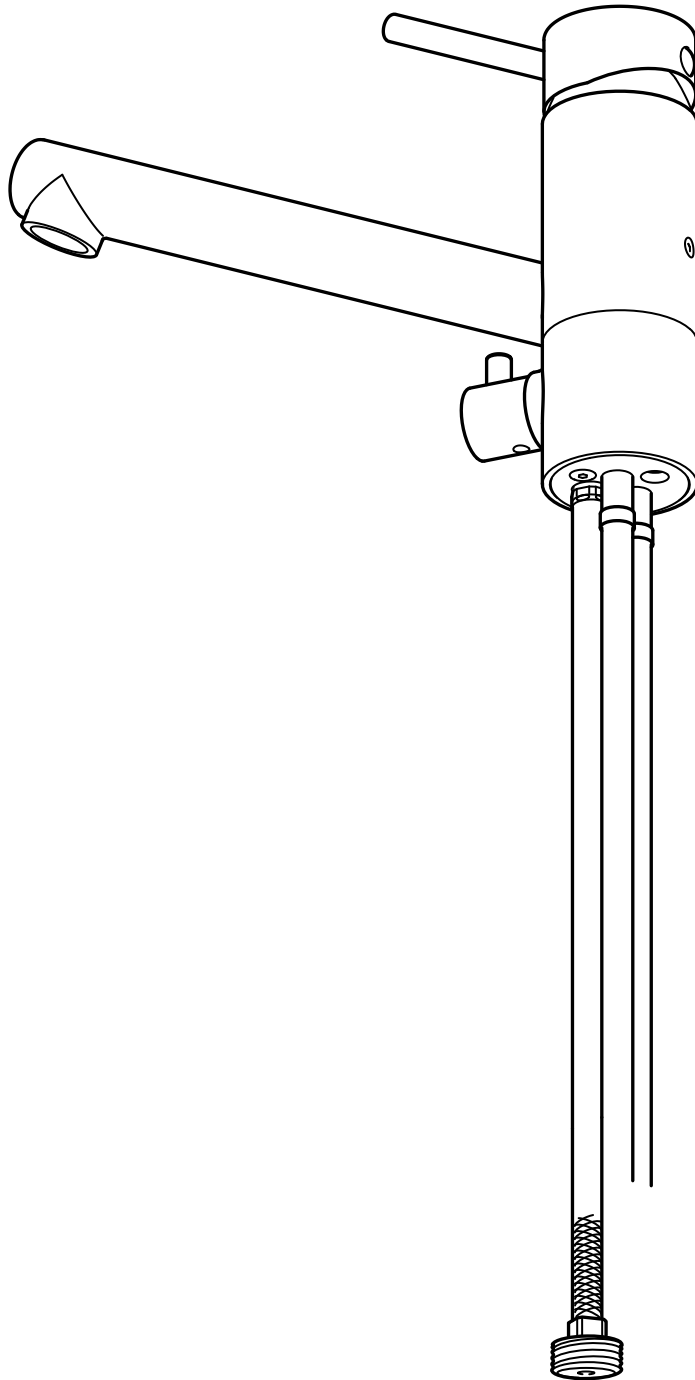
**Svenska**  
Röranslutningen måste vara plan och fri från vassa kanter.

**English**  
The pipe connection needs to be flat and free from sharp edges.

**Svenska**  
OBS! Dra aldrig åt för hårt; slangar och packningar kan skadas.

**English**  
IMPORTANT! Do not tighten too hard: this can damage hoses/pipes and washers.

# 5



## Svenska

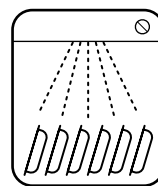
### Varning!

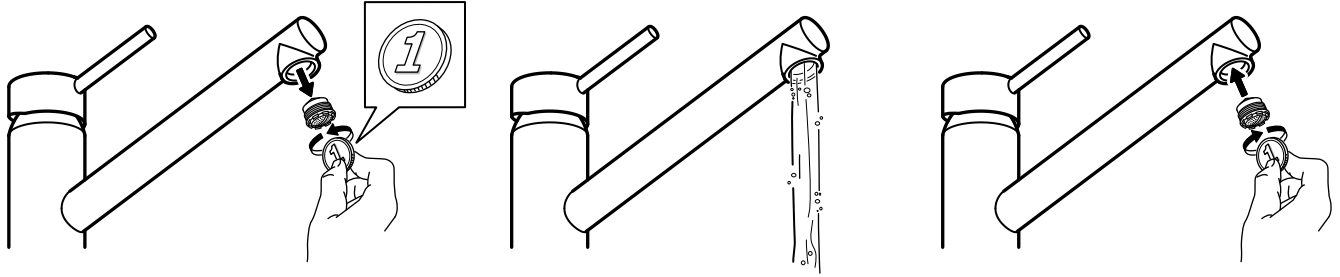
Risk för egendomsskada. Om diskmaskinsanslutning inte behövs måste den tätas med en G3/4" (R20) mässingspropp.

## English

### Warning!

Risk of property damage. If dishwasher connection is not required it must be capped with a G3/4" (R20) brass plug.



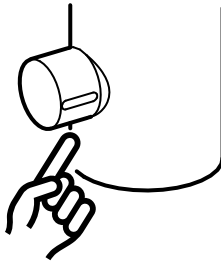
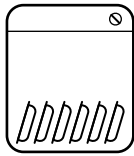


**Svenska**

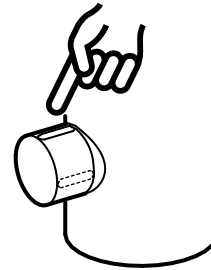
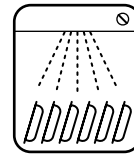
Innan användning: skruva loss filtret med ett mynt och låt vatten rinna igenom några minuter. Skruva sedan på filtret igen.  
OBS! Dra inte åt för hårt; filtret kan skadas.

**English**

Before use: Unscrew the Aerator/Flow Guide with a coin and allow the water to run freely for a few minutes. Then screw the Aerator/Flow Guide back in place up to the stop DO NOT OVER TIGHTEN.



**Svenska**  
Stängd.  
**English**  
Closed.



**Svenska**  
Öppen.  
**English**  
Open.

**Svenska**

Kontrollera regelbundet att installationen är tät.

**English**

Check at regular intervals to make sure that the installation is not leaking.