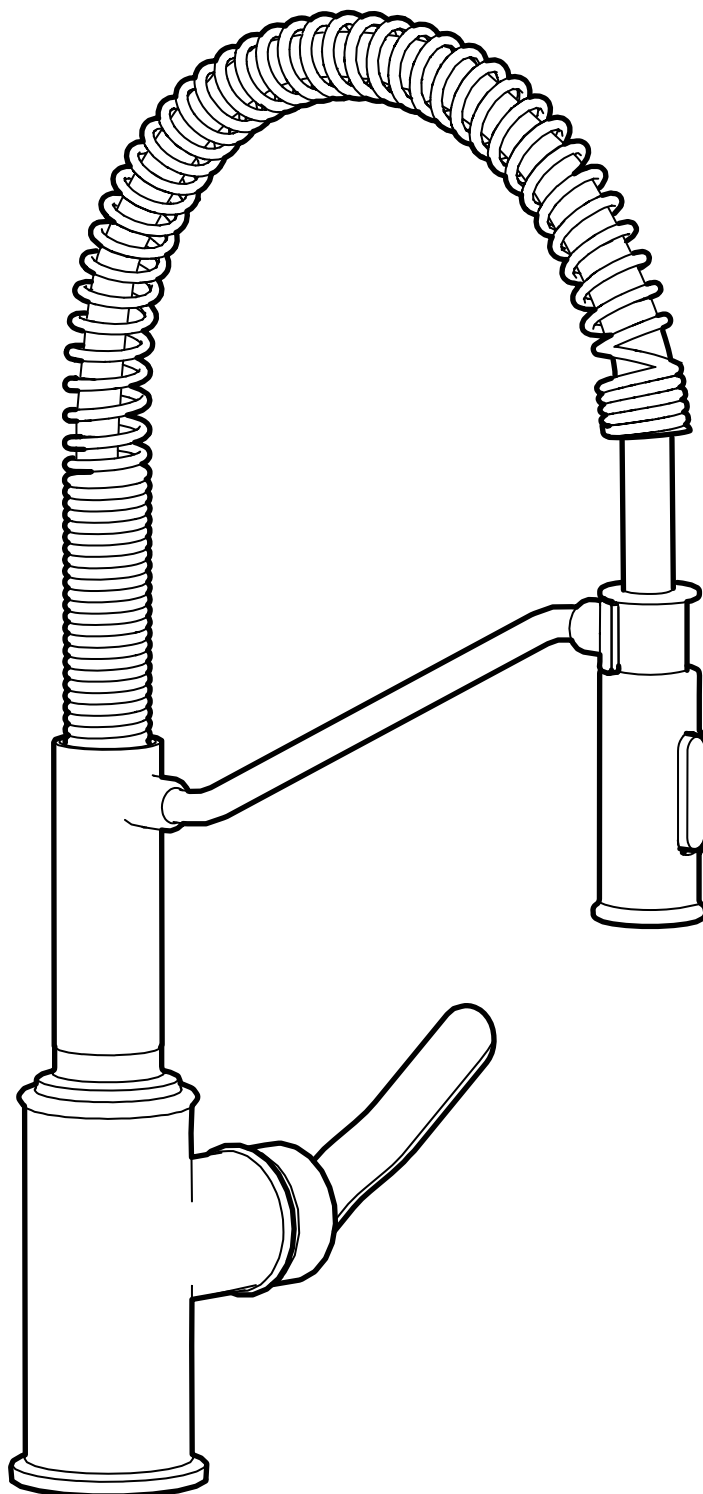


# TAKSJÖN



Design and Quality  
IKEA of Sweden

**Svenska****Innehåll**

Verktyg och reservdelar	4
Montering av produkt	6
Illustration av produkt, delar och artikelnummer	16

**English****Contents**

Tools and spare parts	4
Product assembly	6
Illustration of product, parts and part numbers	16



**Svenska**

Stäng av huvudkranen innan du byter blandare.

**English**

Switch off main shut-off valve before changing mixer tap.



**Svenska**

Installationen ska utföras i enlighet med branschreglerna Säker Vatteninstallation.

**English**

Installation shall be carried out in accordance with Industry Regulations Säker Vatteninstallation.



**Accepterad**  
monteringsanvisning  
2026:1



TG 32365



1913

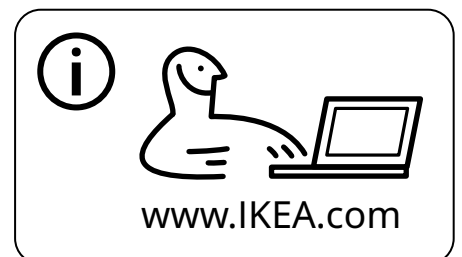
EN 817 | EN 1717

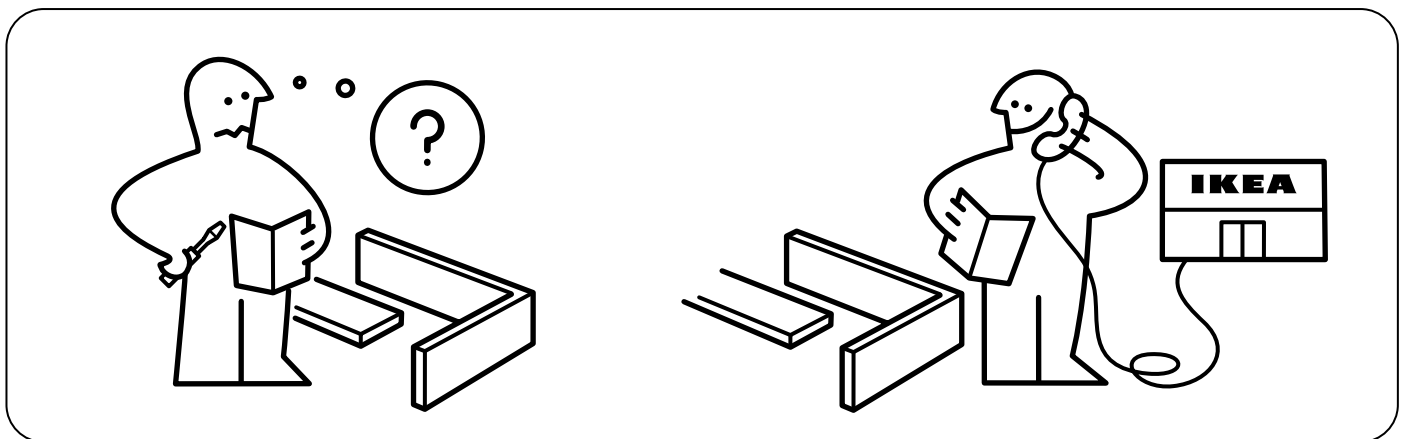
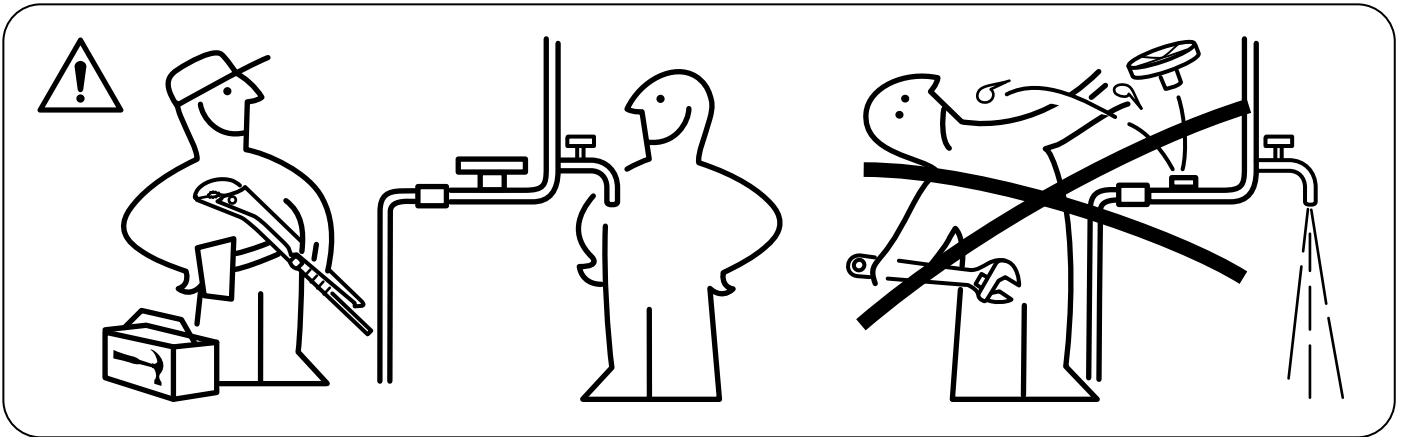
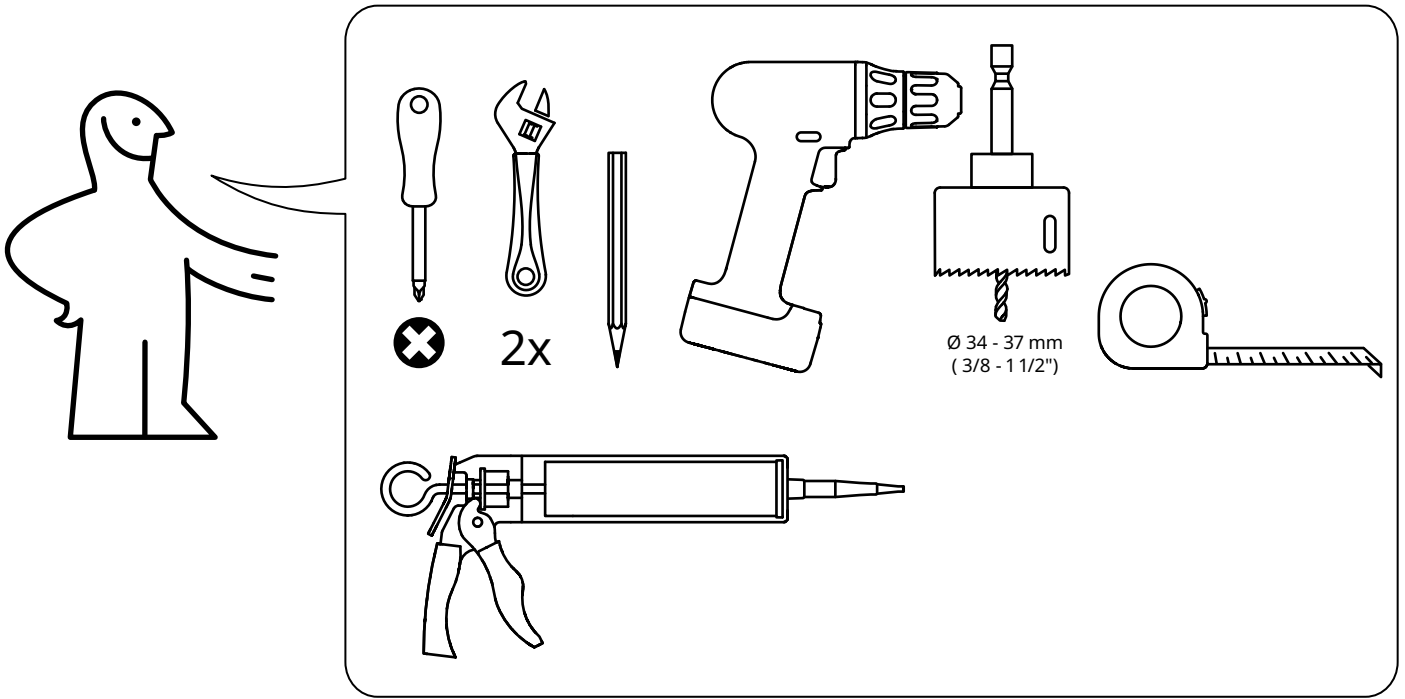
**Svenska**

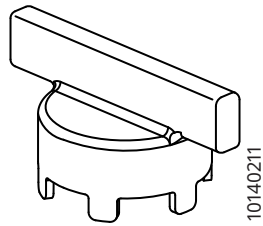
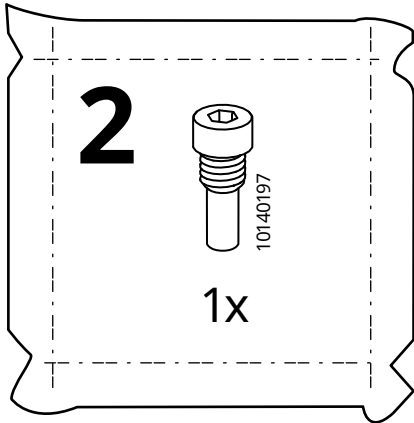
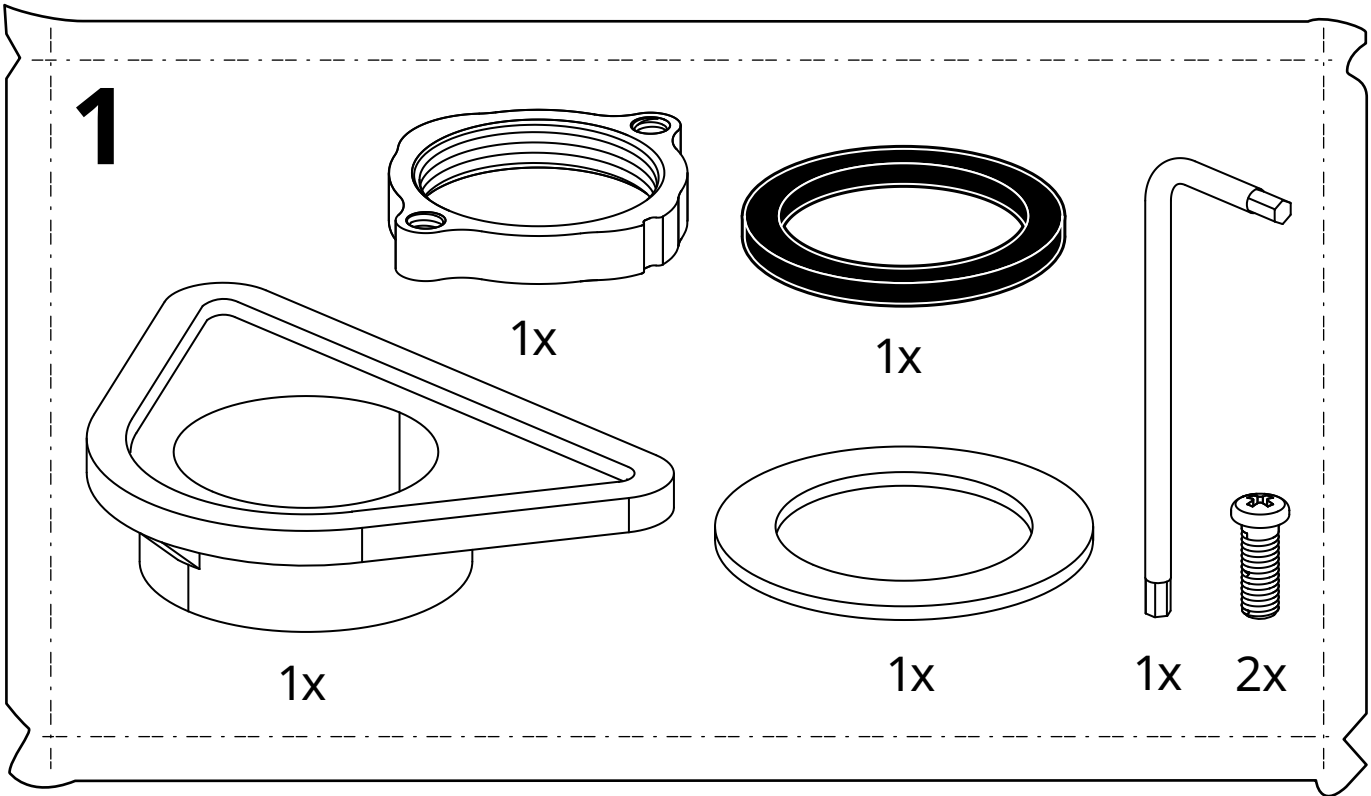
RSK Nr: 8312364

**English**

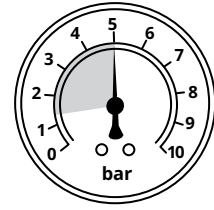
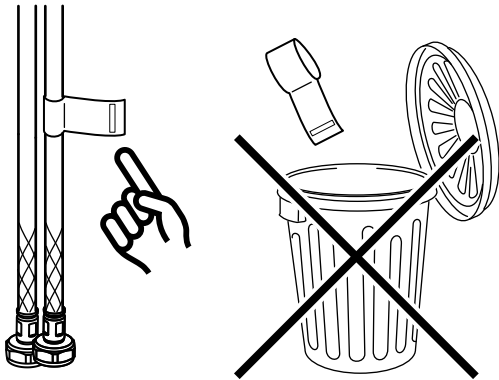
RSK No: 8312364







1x



**Svenska**

Rekommenderad  
varmvattentemperatur: 60°C  
Max. varmvattentemperatur:  
80°C

**English**

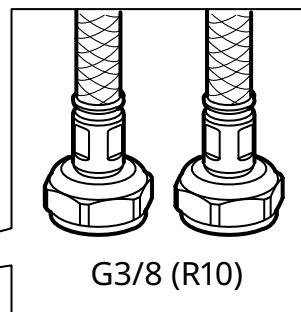
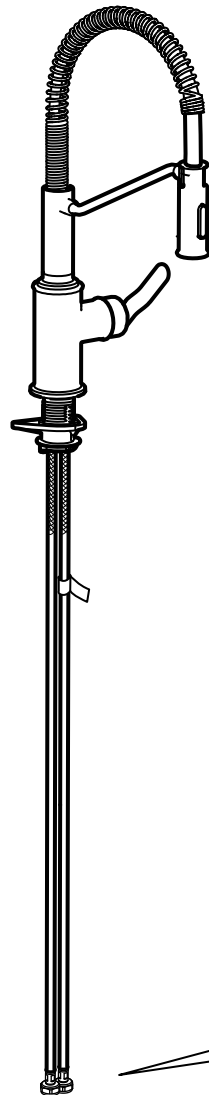
Recommended hot water  
temperature: 60°C  
Max. hot water temperature:  
80°C

**Svenska**

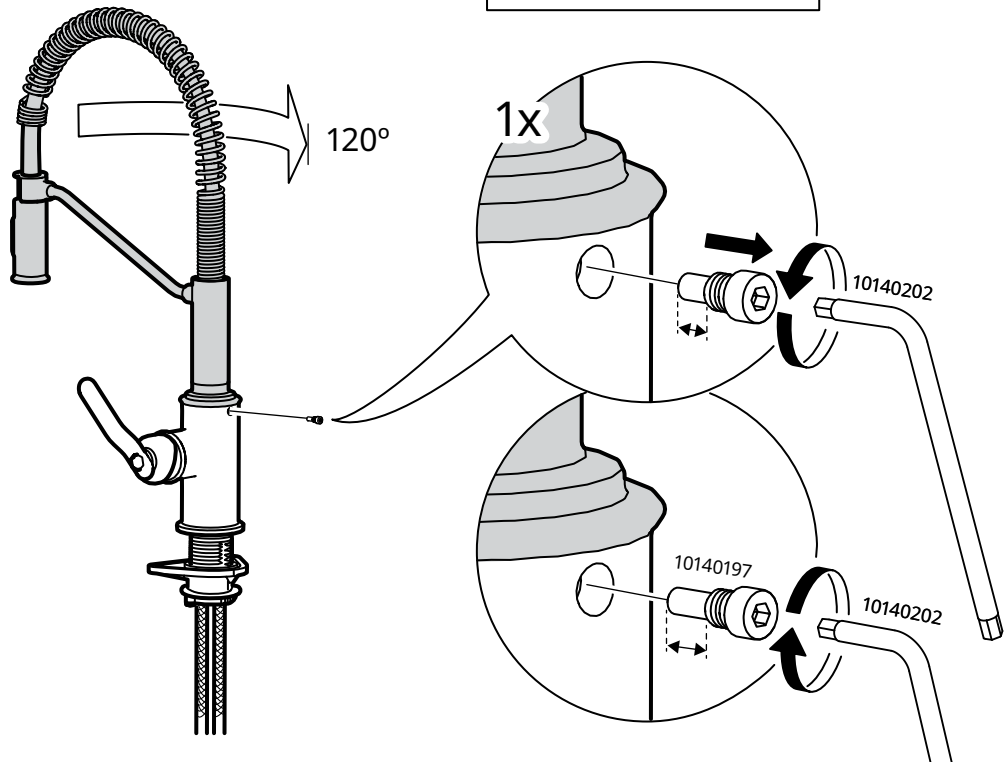
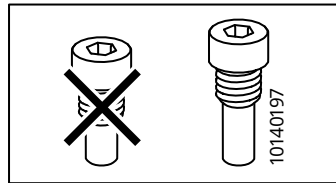
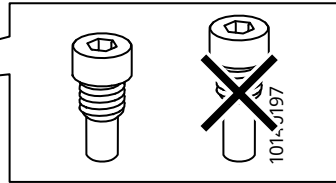
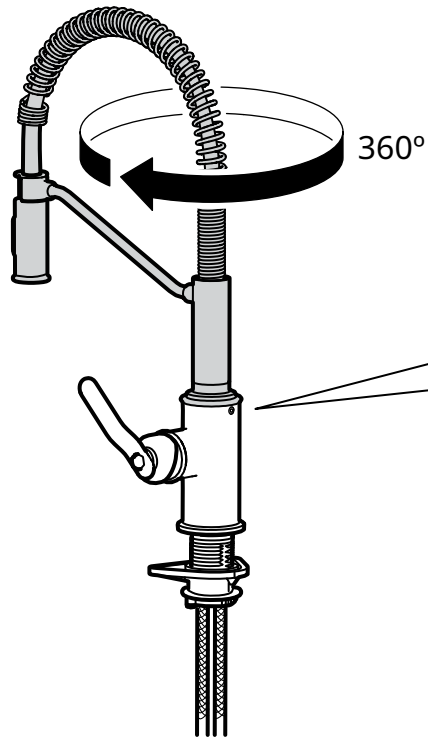
Rekommenderat arbetstryck:  
1,4 - 5 bar  
Max. statiskt tryck: 10 bar  
Max. provningstryck: 16 bar

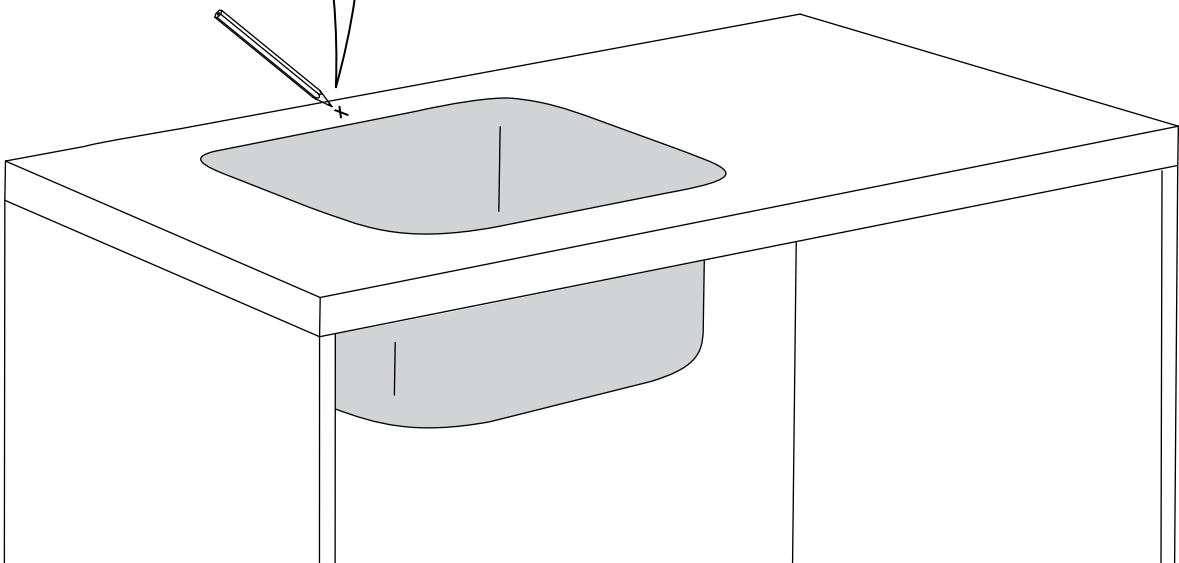
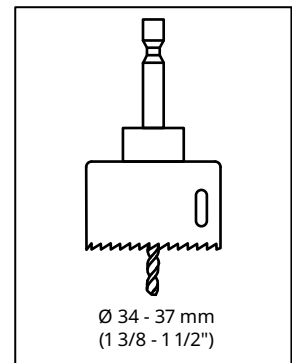
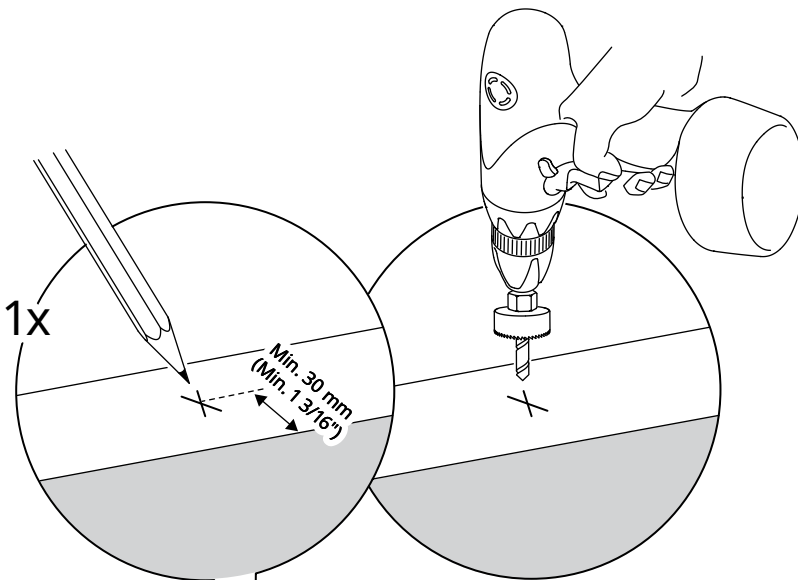
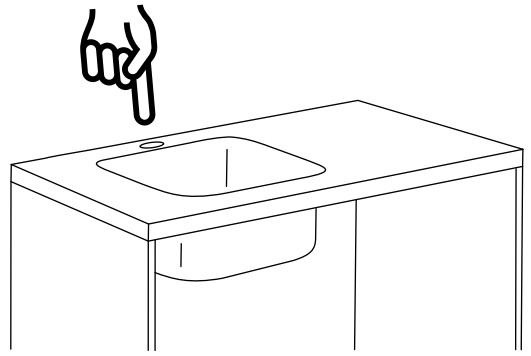
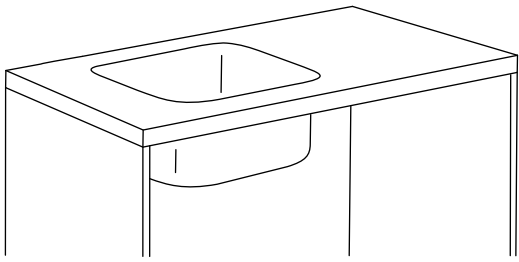
**English**

Recommended working  
pressure: 1,4 - 5 bar  
Max. static pressure: 10 bar  
Max. test pressure: 16 bar



G3/8 (R10)





# 1

## Svenska

Täta de öppna ytorna med silikon för att förhindra vatten från att tränga in i bänkskivan vid eventuellt läckage. Silikon medföljer ej.

## English

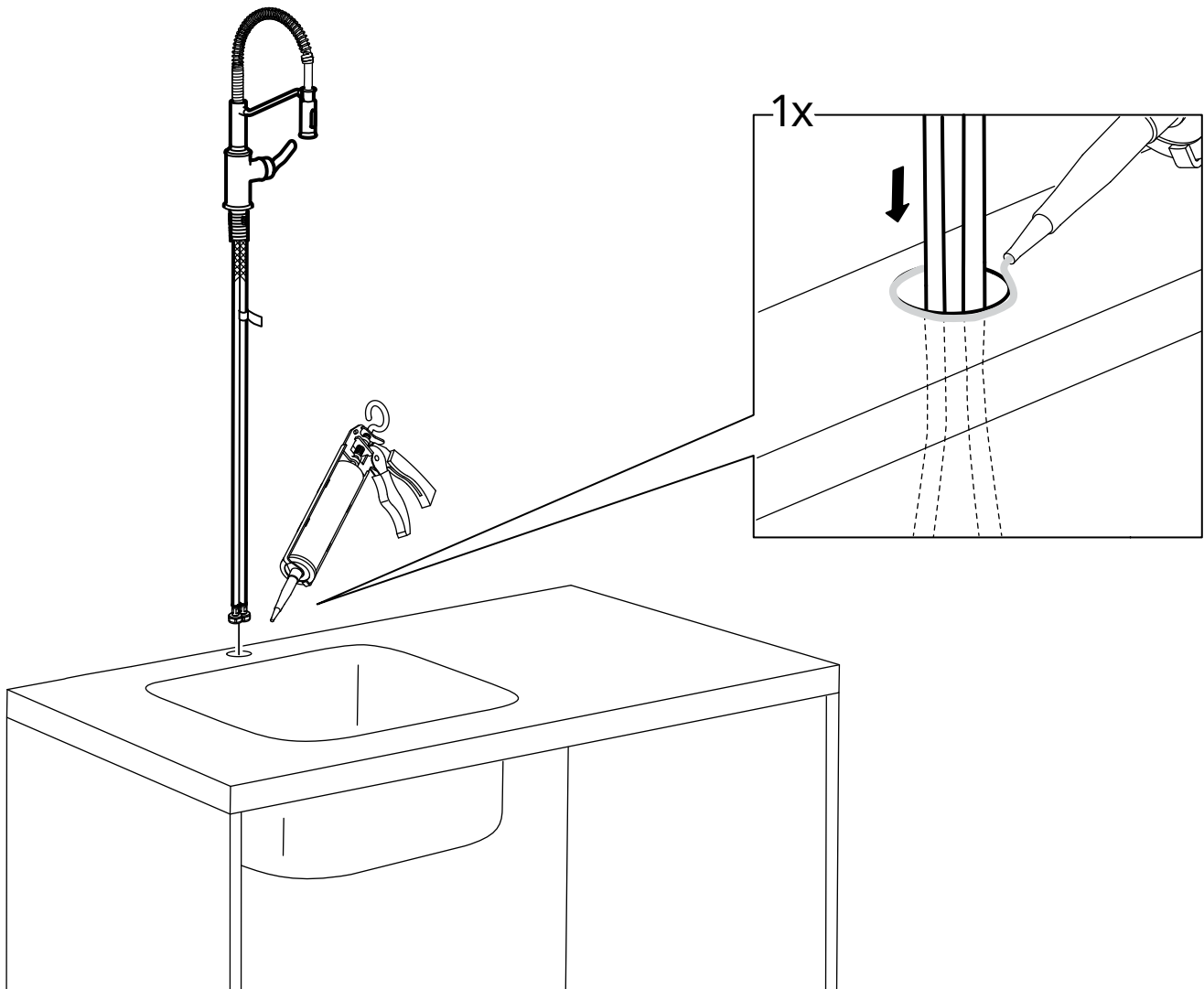
Seal the open surfaces with silicone to prevent water from penetrating the worktop upon any leaks. Silicone is not included.

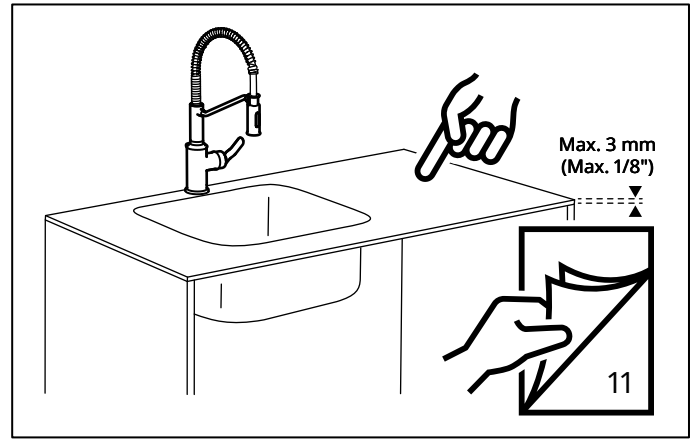
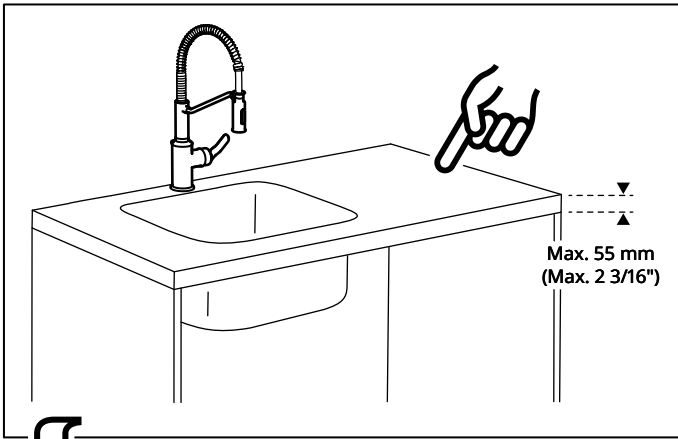
## Svenska

Silikonfogmassan måste vara vatten- och mögelbeständig och lämplig för installationen, i enlighet med EN 15651-3, klass XS1.

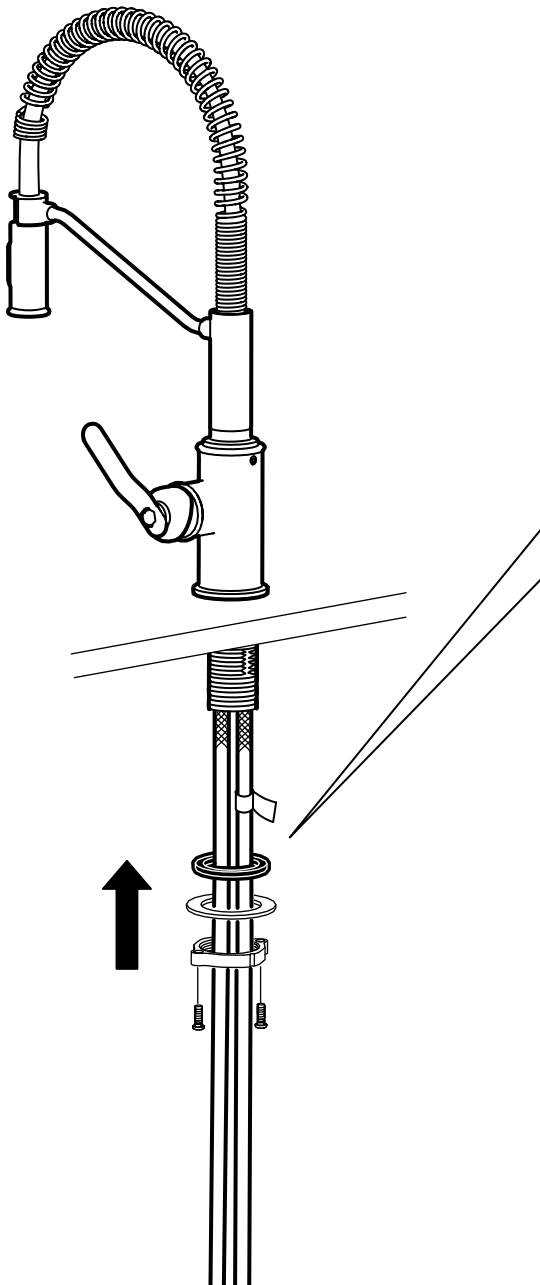
## English

Silicone sealant must be water- and mould-resistant and suitable for the installation, according to EN 15651-3, Class XS1.

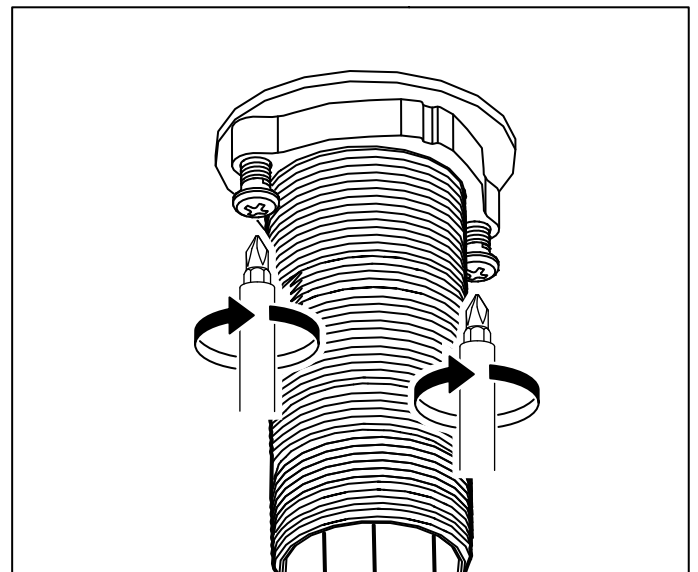
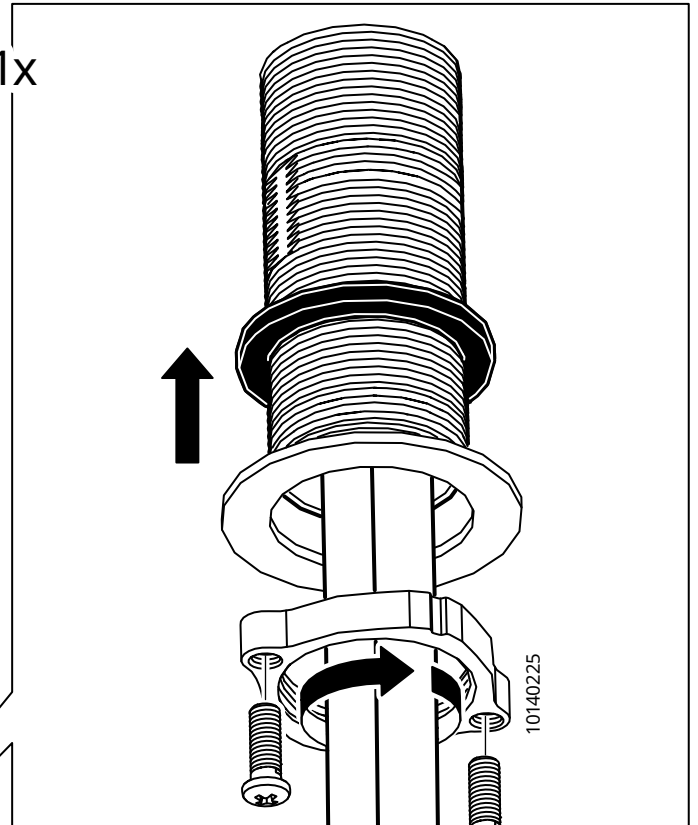


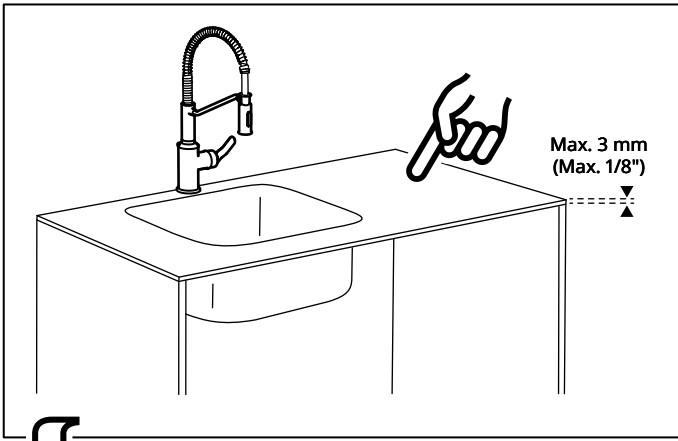


2

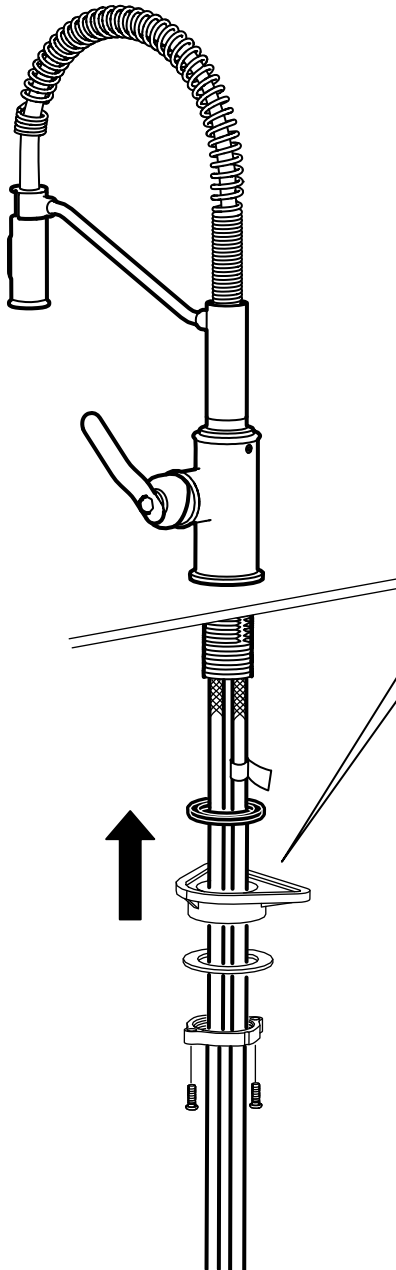


1x

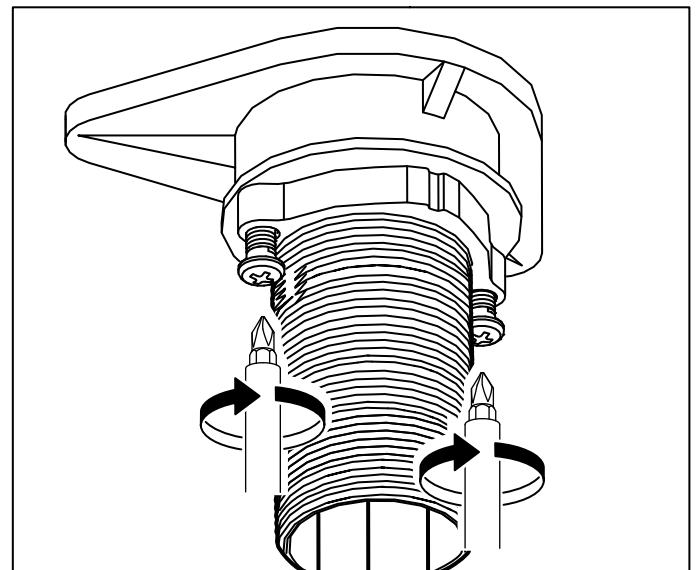
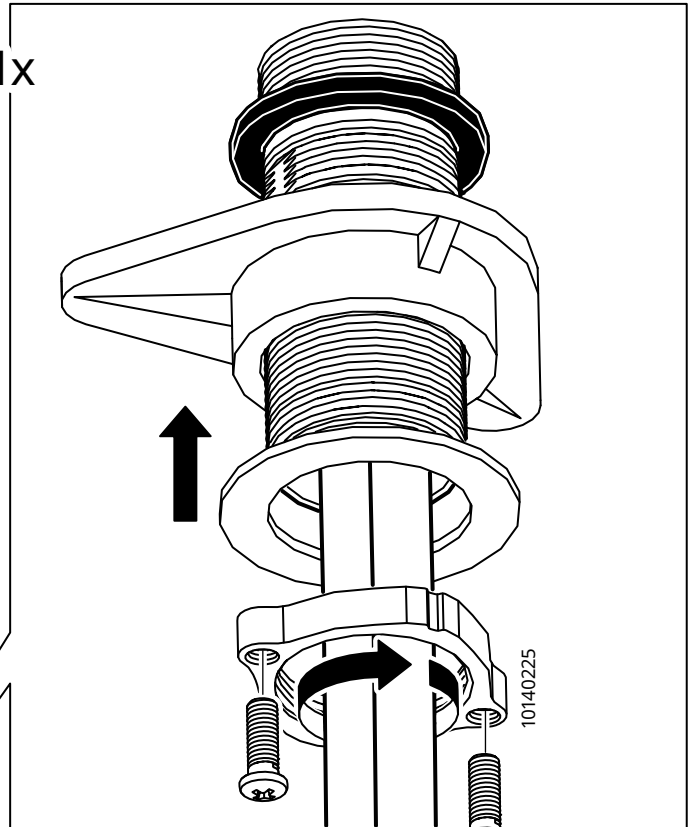


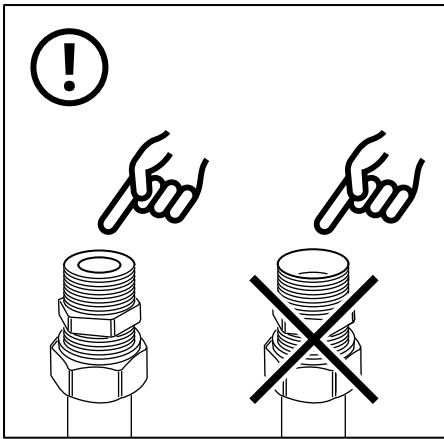
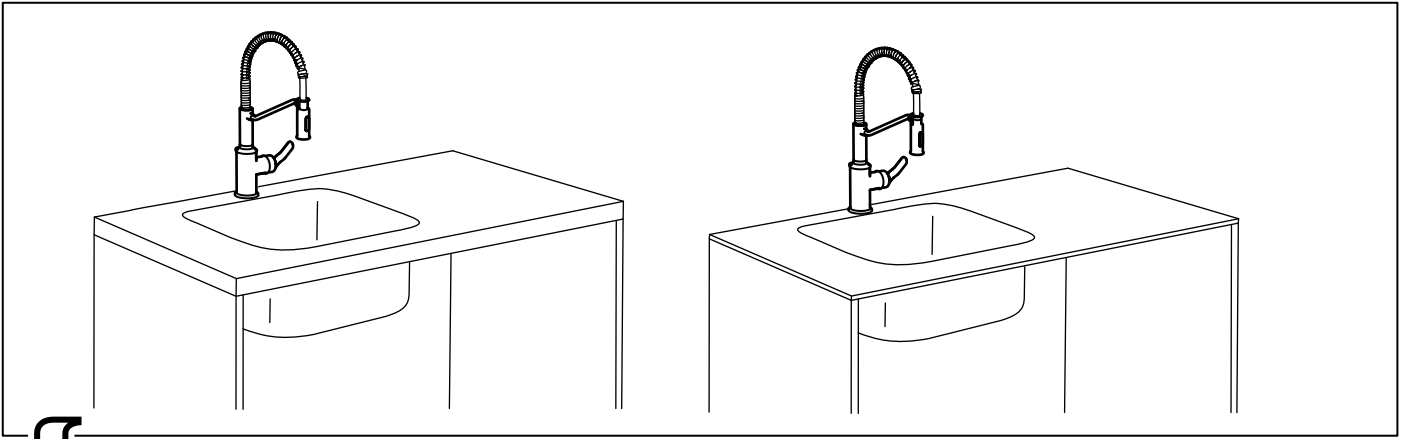


2



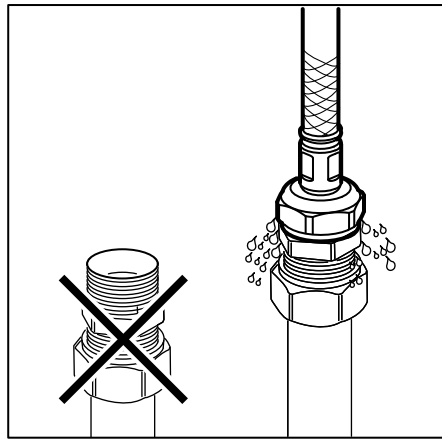
1x





**Svenska**  
Röranslutningen måste vara plan och fri från vassa kanter.

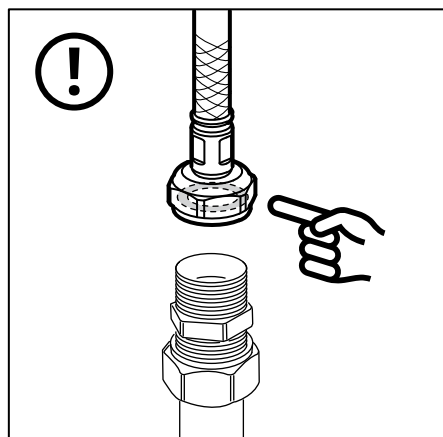
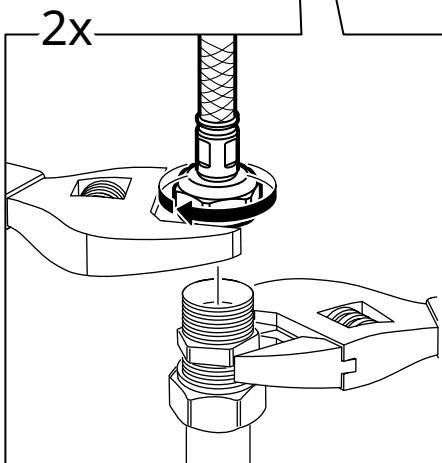
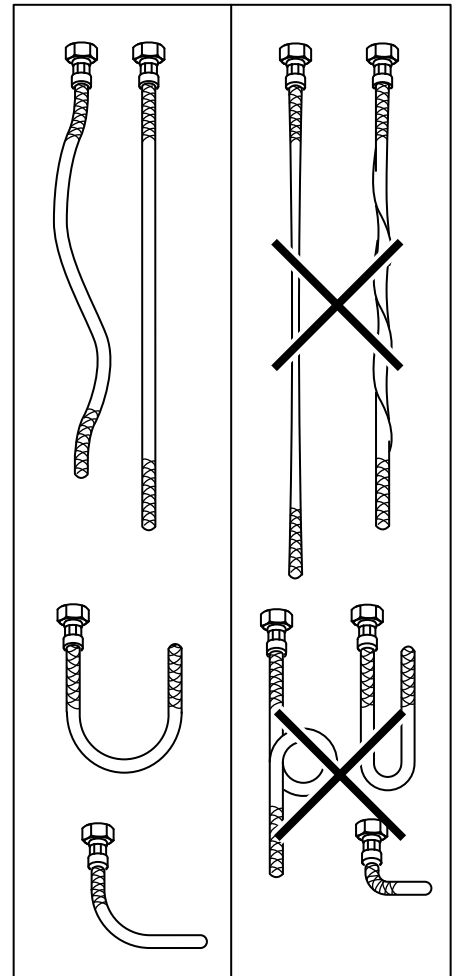
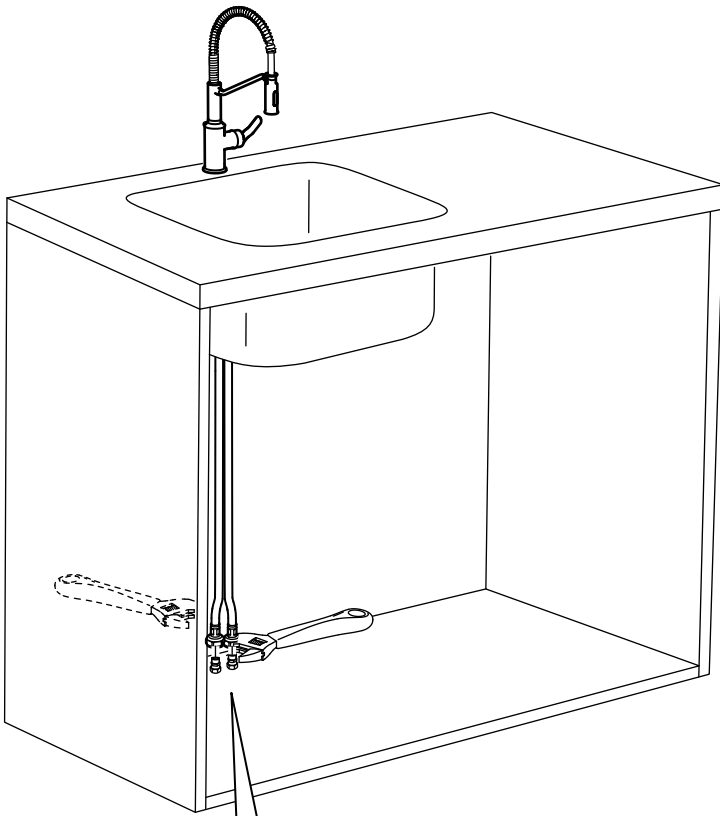
**English**  
The pipe connection needs to be flat and free from sharp edges.

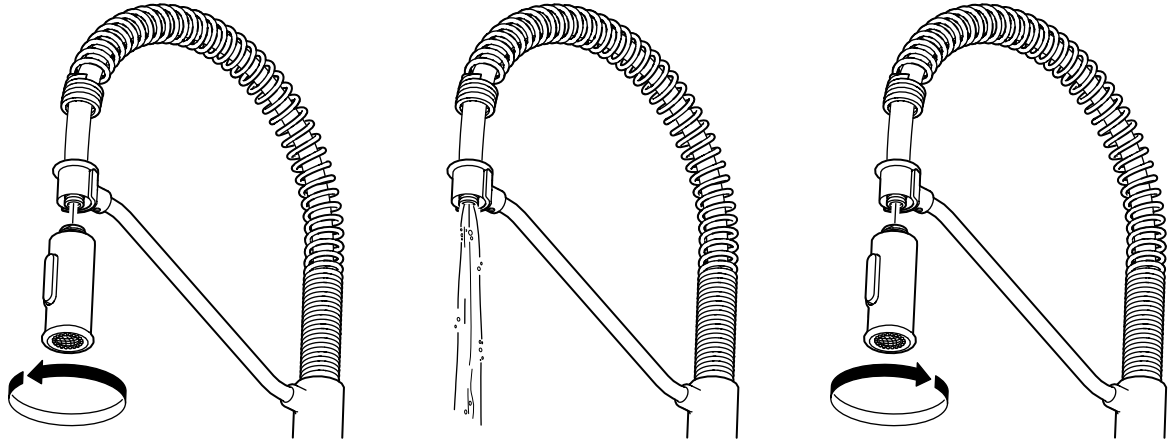


**Svenska**  
OBS! Dra aldrig åt för hårt; slangar och packningar kan skadas.

**English**  
IMPORTANT! Do not tighten too hard: this can damage hoses/pipes and washers.

# 3





#### Svenska

Innan användning: skruva loss handduschen och låt vatten rinna igenom 5 minuter. Skruva sedan på handduschen igen. Handduschen och kranen har en specialgånga och ska alltid användas tillsammans.

#### English

Before use: unscrew the hand spray and allow the water to run freely for 5 minutes. Then screw the hand spray back in place. The hand spray and tap have a special thread and should always be used together.

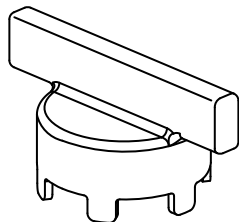
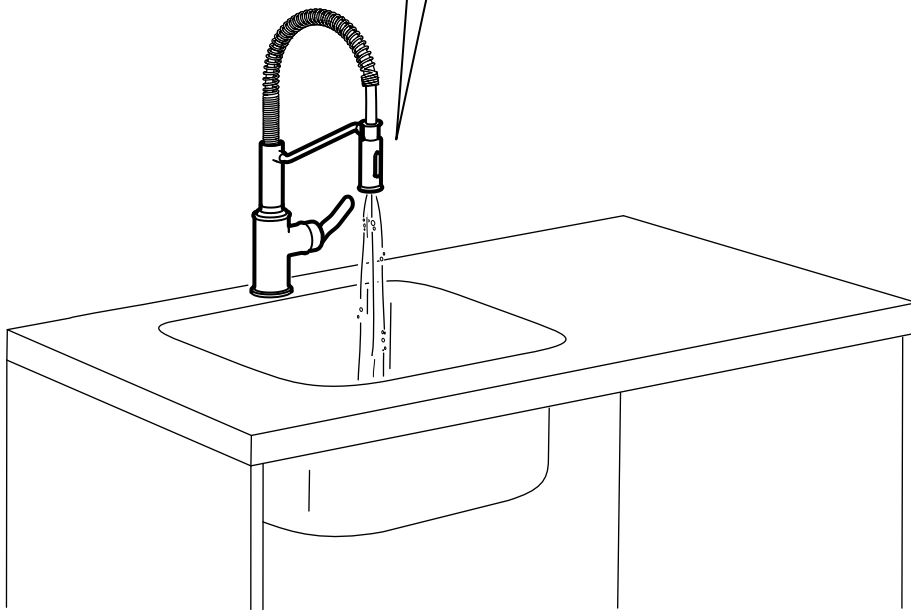
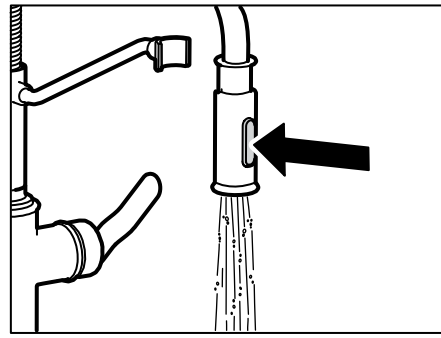
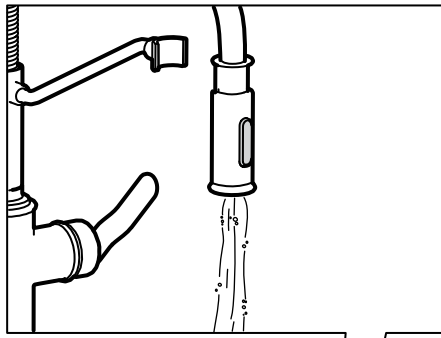


#### Svenska

Kontrollera regelbundet att installationen är tät.

#### English

Check at regular intervals to make sure that the installation is not leaking.



10140211

