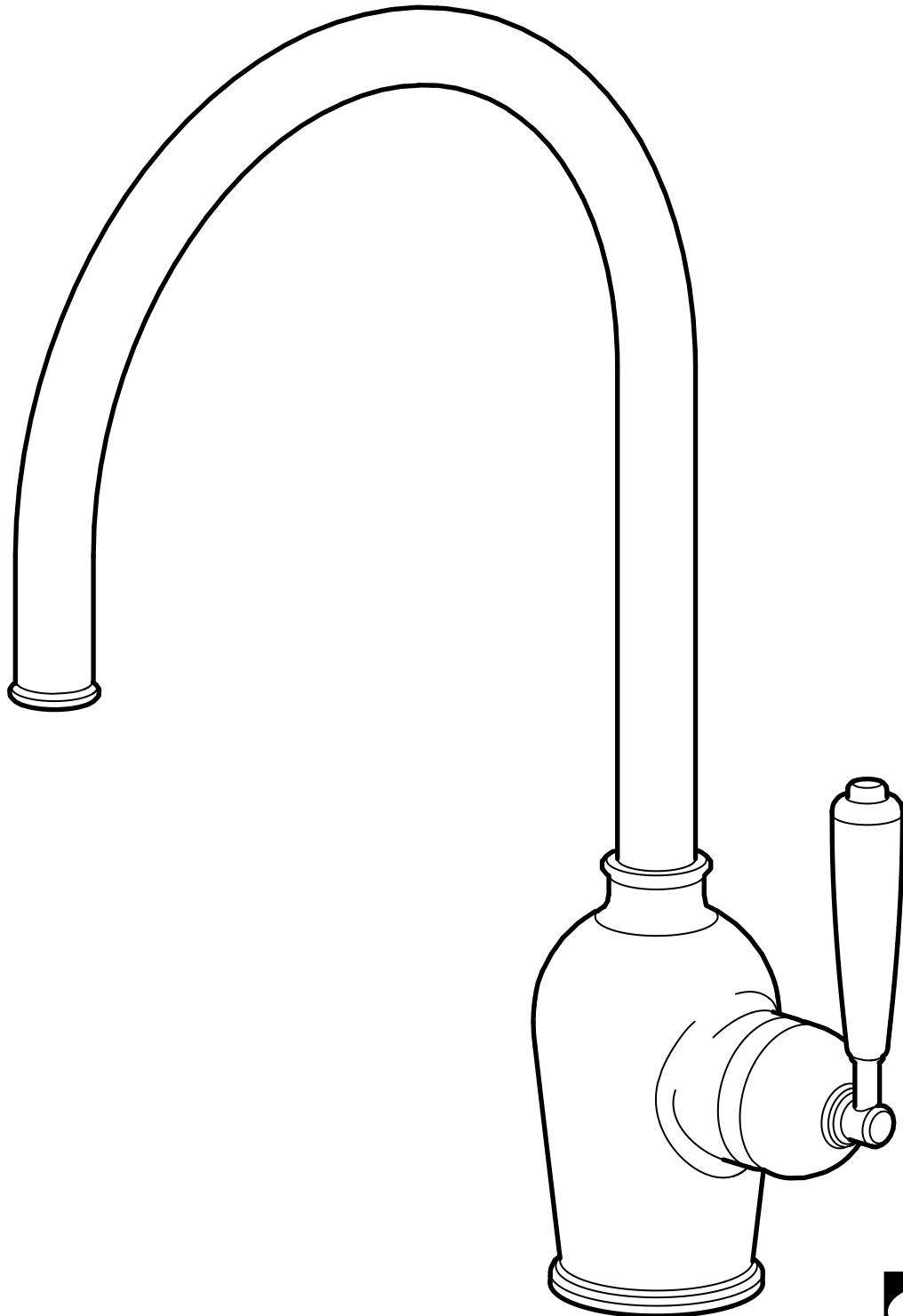


# INSJÖN



Design and Quality  
IKEA of Sweden

**Svenska****Innehåll**

Verktyg och reservdelar	4
Illustration av produkt, delar och artikelnummer	6
Montering av produkt	7

**English****Contents**

Tools and spare parts	4
Illustration of product, parts and part numbers	6
Product assembly	7



**Svenska**

Stäng av huvudkranen innan du byter blandare.

**English**

Switch off main shut-off valve before changing mixer tap.



**Svenska**

Installationen ska utföras i enlighet med branschreglerna Säker Vatteninstallation.

**English**

Installation shall be carried out in accordance with Industry Regulations Säker Vatteninstallation.



**Accepterad**  
monteringsanvisning  
2026:1



TG 1422



1913

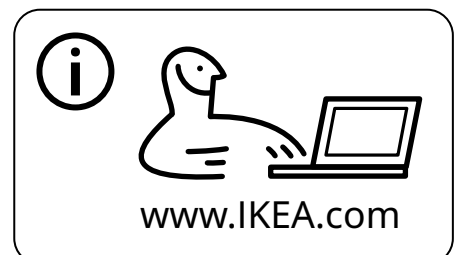
EN 817 | EN 1717

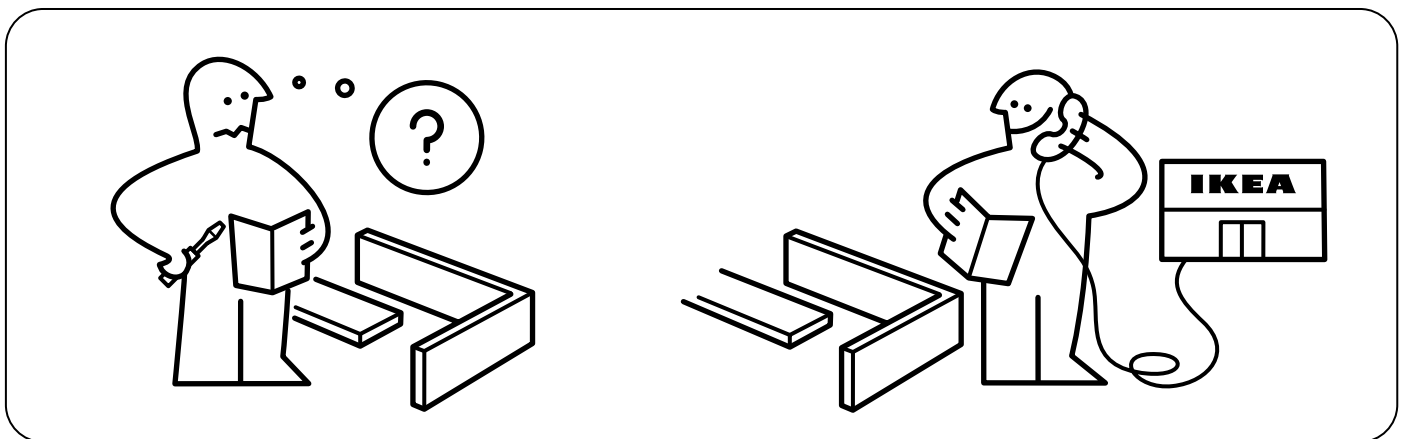
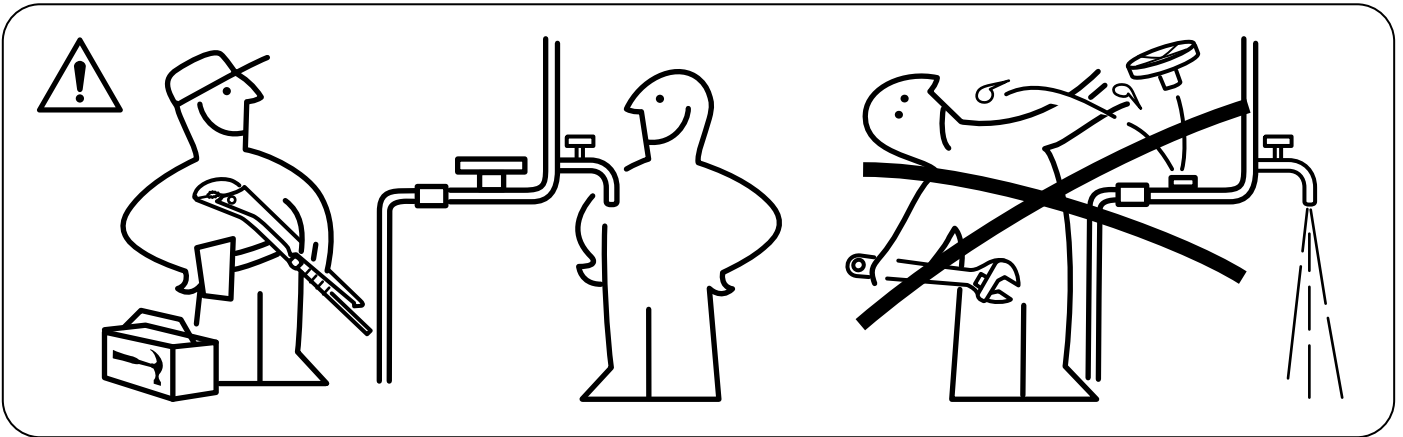
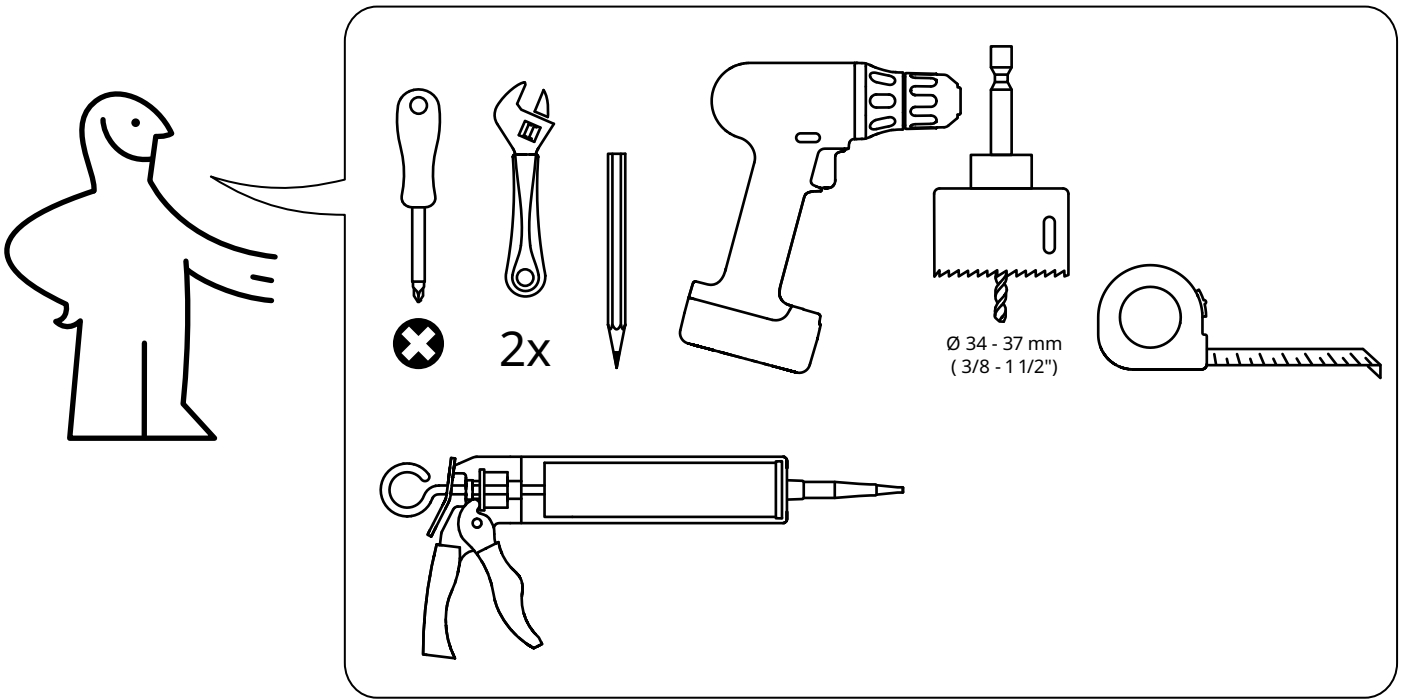
**Svenska**

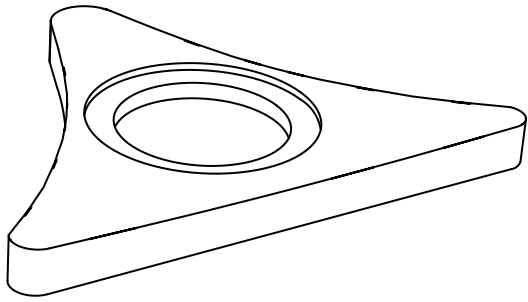
RSK Nr: 8312182

**English**

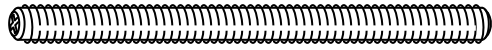
RSK No: 8312182



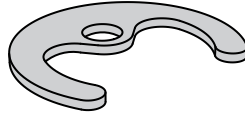




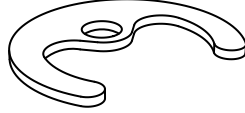
120087



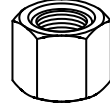
120143



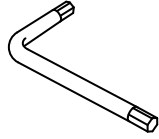
120142



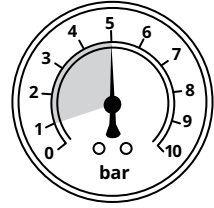
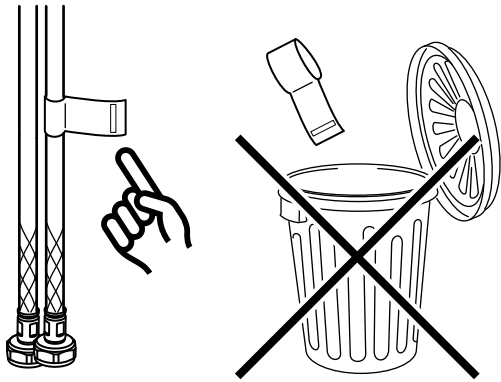
120141



120172



110084



**Svenska**

Rekommenderad  
varmvattentemperatur: 60°C  
Max. varmvattentemperatur:  
80°C

**English**

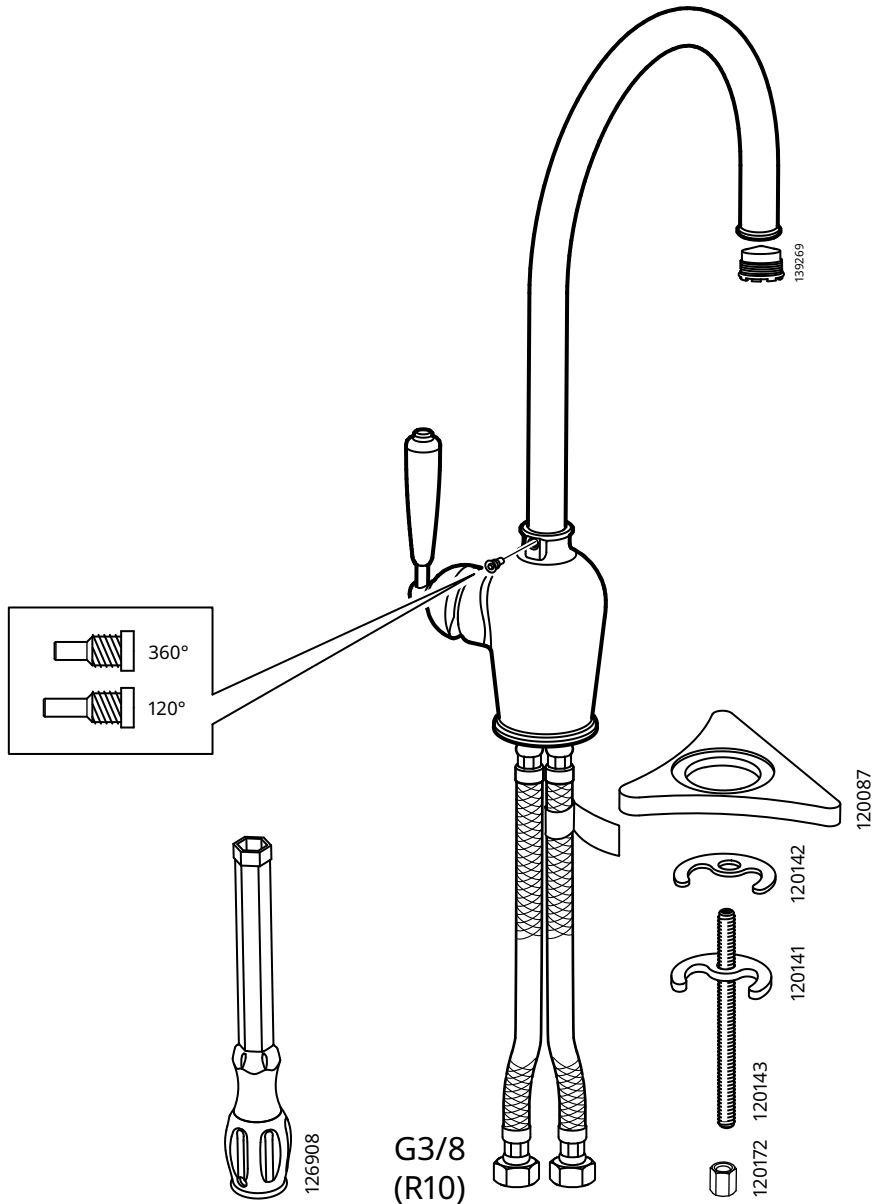
Recommended hot water  
temperature: 60°C  
Max. hot water temperature:  
80°C

**Svenska**

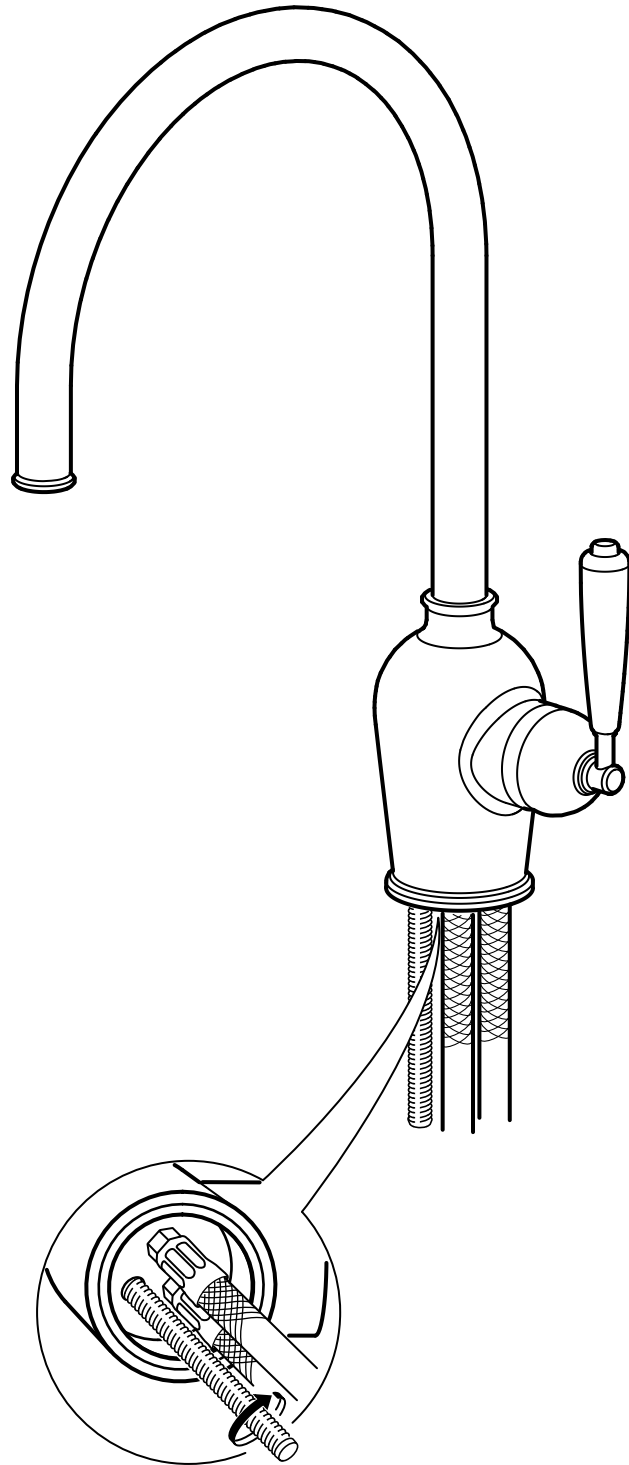
Rekommenderat arbetstryck:  
1 - 5 bar  
Max. statiskt tryck: 10 bar  
Max. provningstryck: 16 bar

**English**

Recommended working pressure:  
1 - 5 bar  
Max. static pressure: 10 bar  
Max. test pressure: 16 bar



1



**Svenska**

Täta de öppna ytorna med silikon för att förhindra vatten från att tränga in i bänkskivan vid eventuellt läckage. Silikon medföljer ej.

**English**

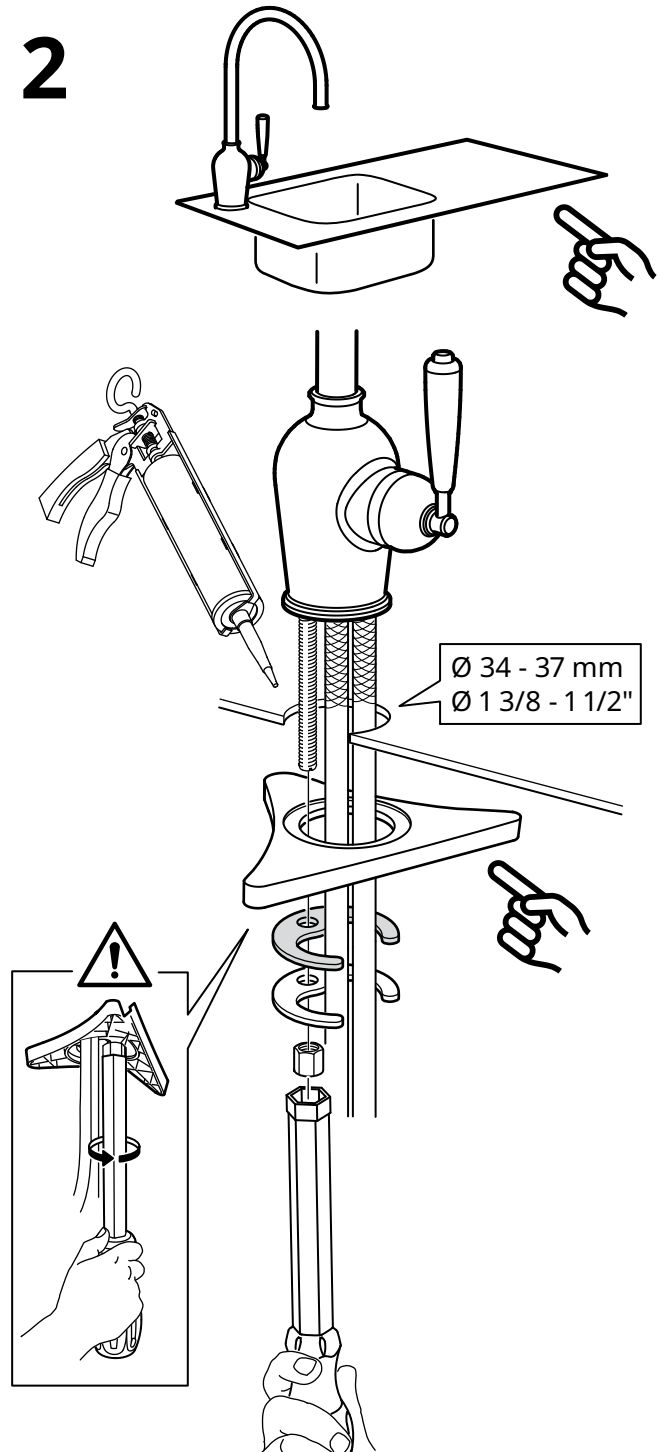
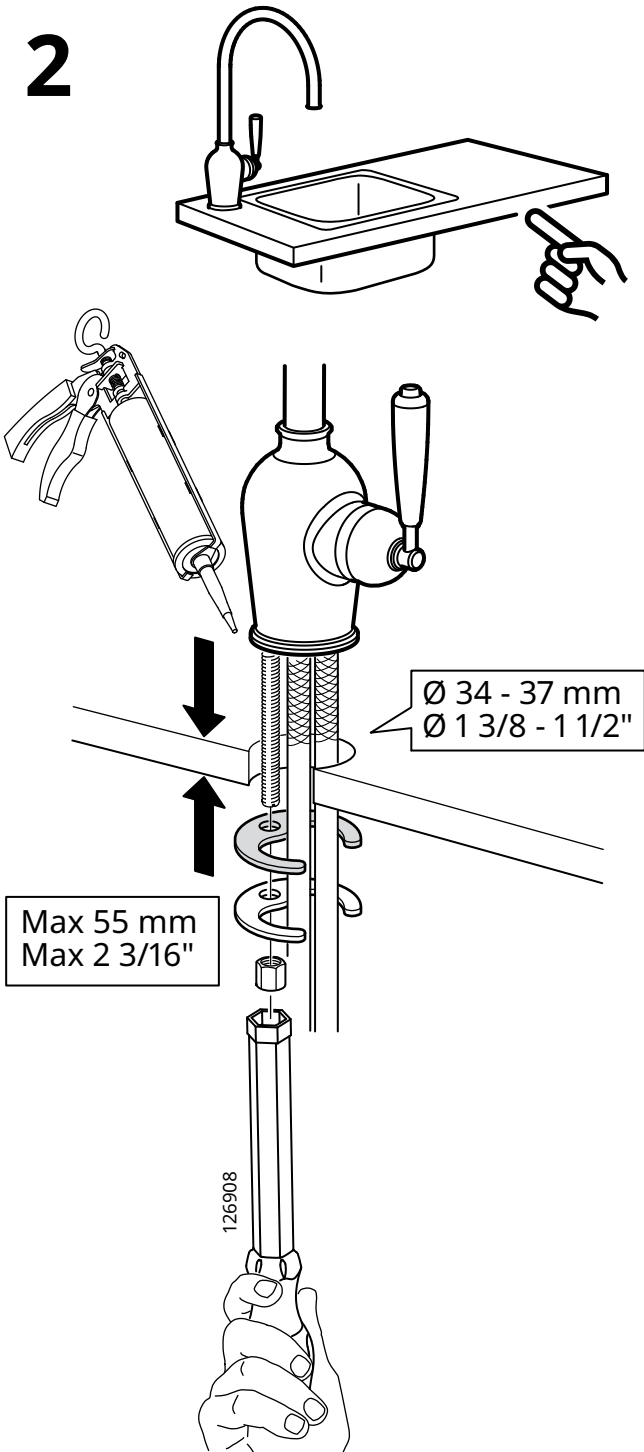
Seal the open surfaces with silicone to prevent water from penetrating the worktop upon any leaks. Silicone is not included.

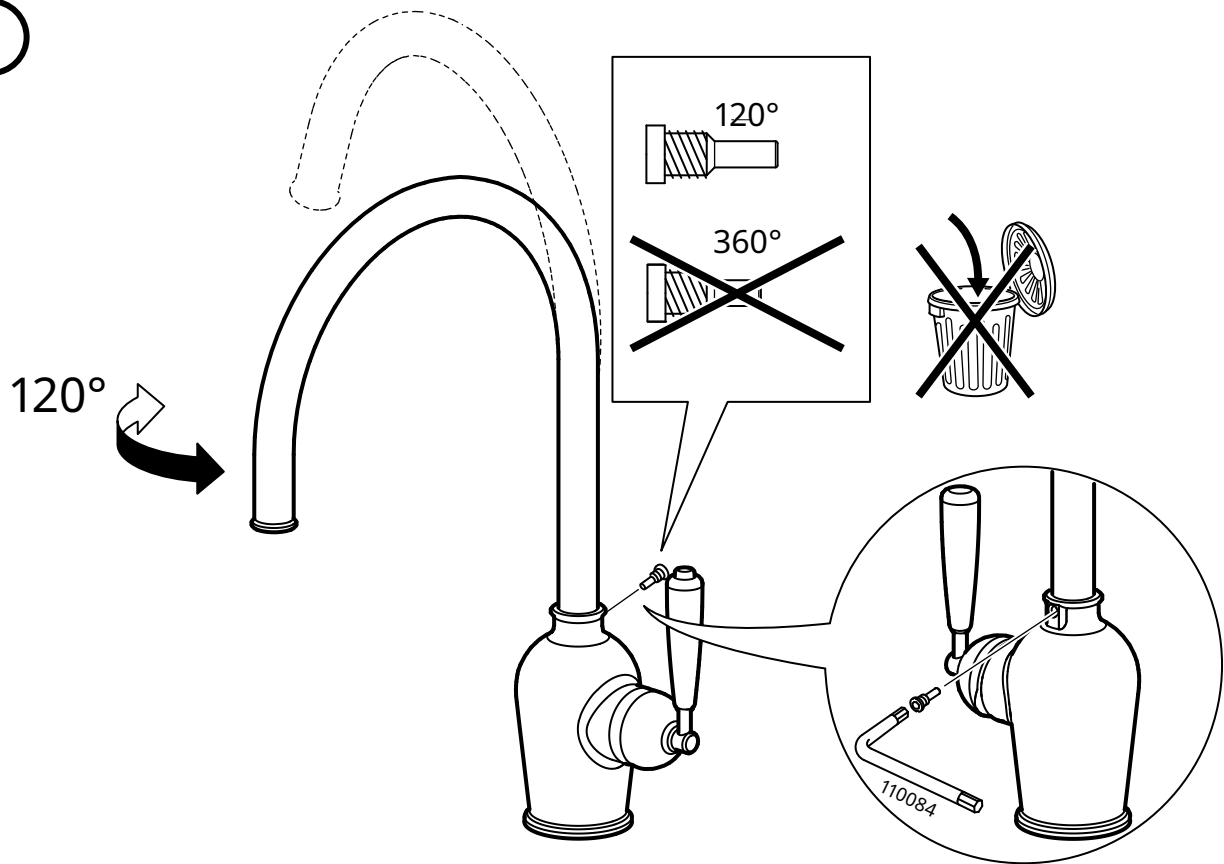
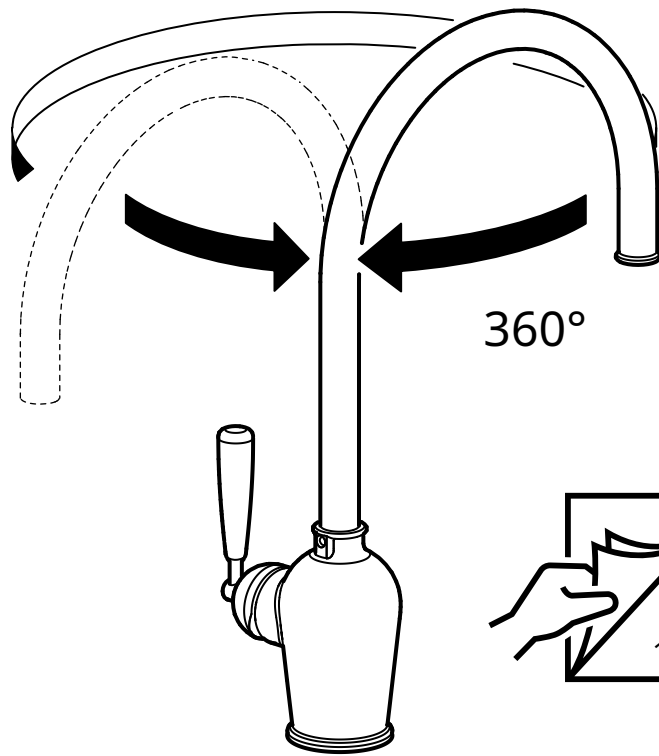
**Svenska**

Silikonfogmassan måste vara vatten- och mögelbeständig och lämplig för installationen, i enlighet med EN 15651-3, klass XS1.

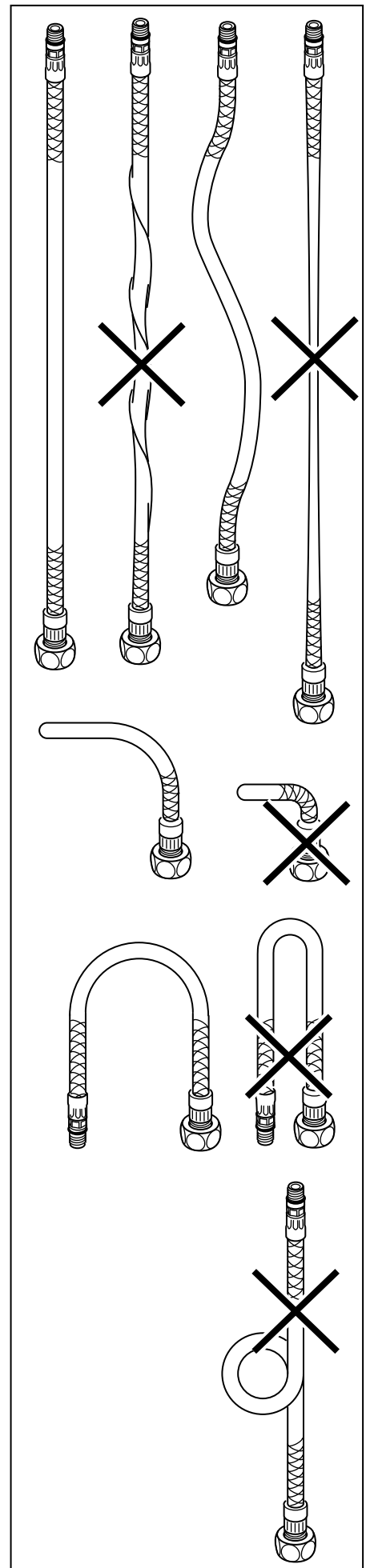
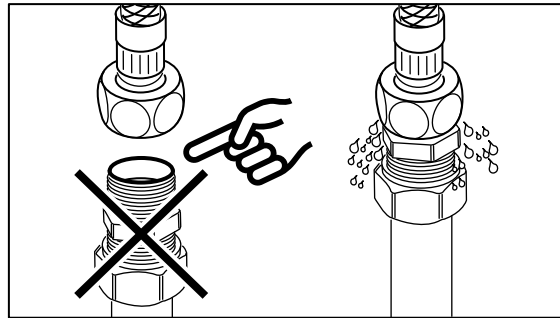
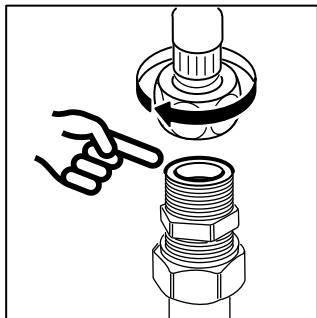
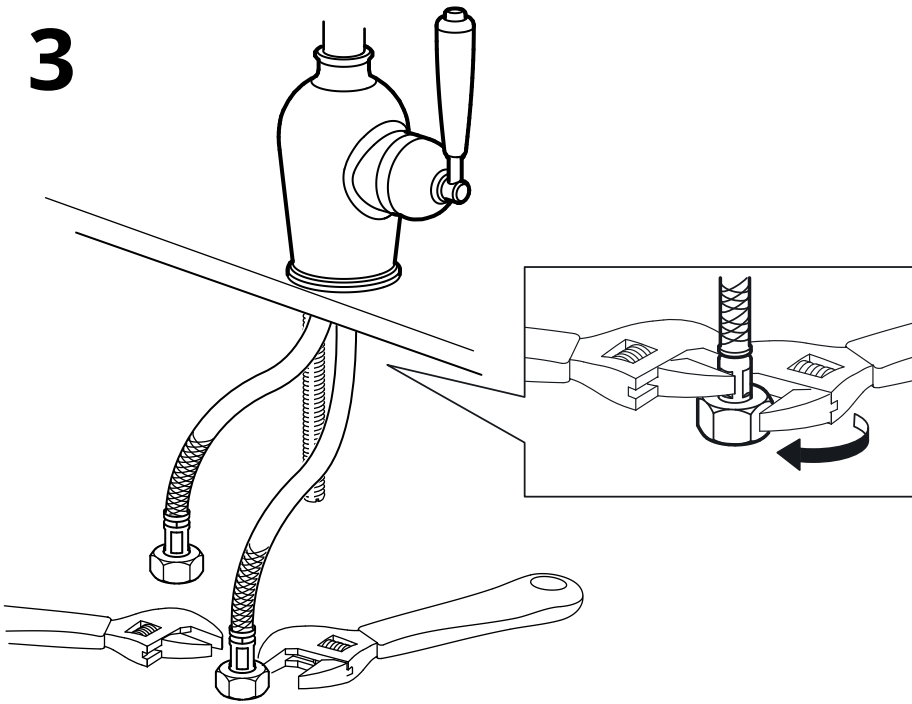
**English**

Silicone sealant must be water- and mould-resistant and suitable for the installation, according to EN 15651-3, Class XS1.





3



**Svenska**

Röranslutningen måste vara plan och fri från vassa kanter.

**English**

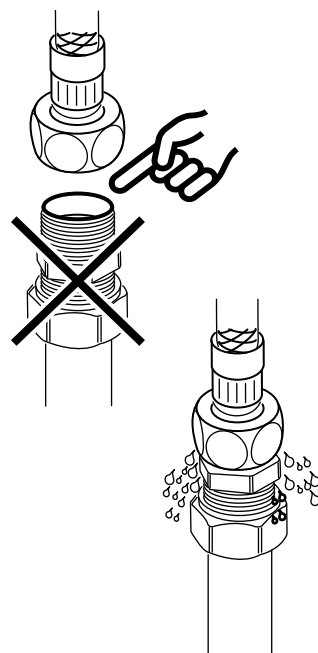
The pipe connection needs to be flat and free from sharp edges.

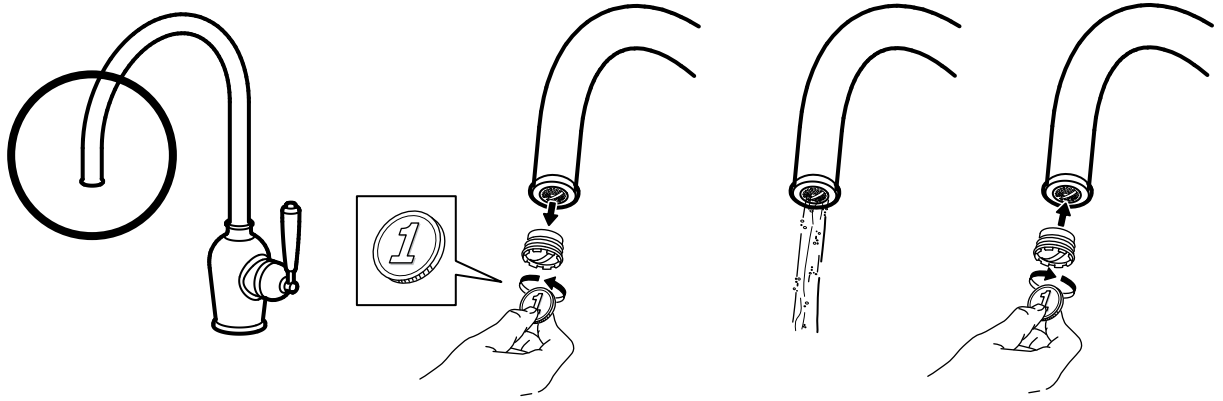
**Svenska**

OBS! Dra aldrig åt för hårt; slangar och packningar kan skadas.

**English**

IMPORTANT! Do not tighten too hard: this can damage hoses/pipes and washers.





#### Svenska

Innan användning: skruva loss filtret med ett mynt och låt vatten rinna igenom några minuter. Skruva sedan på filtret igen.

OBS! Dra inte åt för hårt; filtret kan skadas.

#### English

Before use: Unscrew the Aerator/Flow Guide with a coin and allow the water to run freely for a few minutes. Then screw the Aerator/Flow Guide back in place up to the stop DO NOT OVER TIGHTEN.



#### Svenska

Kontrollera regelbundet att installationen är tät.

#### English

Check at regular intervals to make sure that the installation is not leaking.