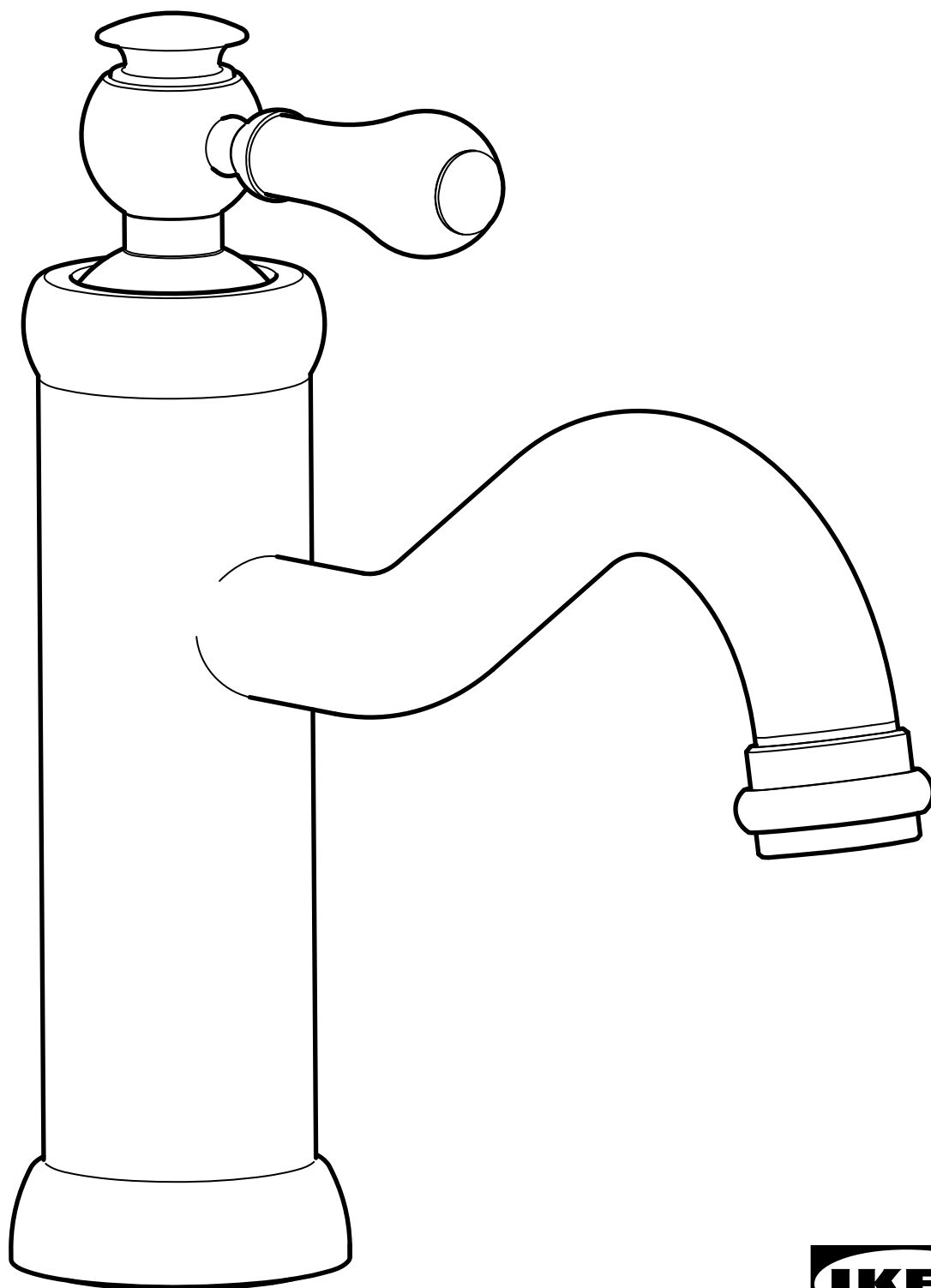


HAMNSKÄR



Design and Quality
IKEA of Sweden

Svenska

Innehåll

Verktyg och reservdelar	4
Montering av produkt	6
Illustration av produkt, delar och artikelnummer	14

English

Contents

Tools and spare parts	4
Product assembly	6
Illustration of product, parts and part numbers	14



Svenska

Stäng av huvudkranen innan du byter blandare.

English

Switch off main shut-off valve before changing mixer tap.



Svenska

Installationen ska utföras i enlighet med branschreglerna Säker Vatteninstallation.

English

Installation shall be carried out in accordance with Industry Regulations Säker Vatteninstallation.



Accepterad
monteringsanvisning
2026:1



TG 1363



1913

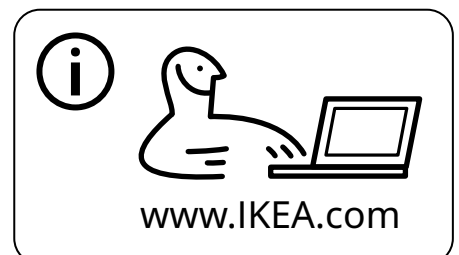
EN 817 | EN 1717

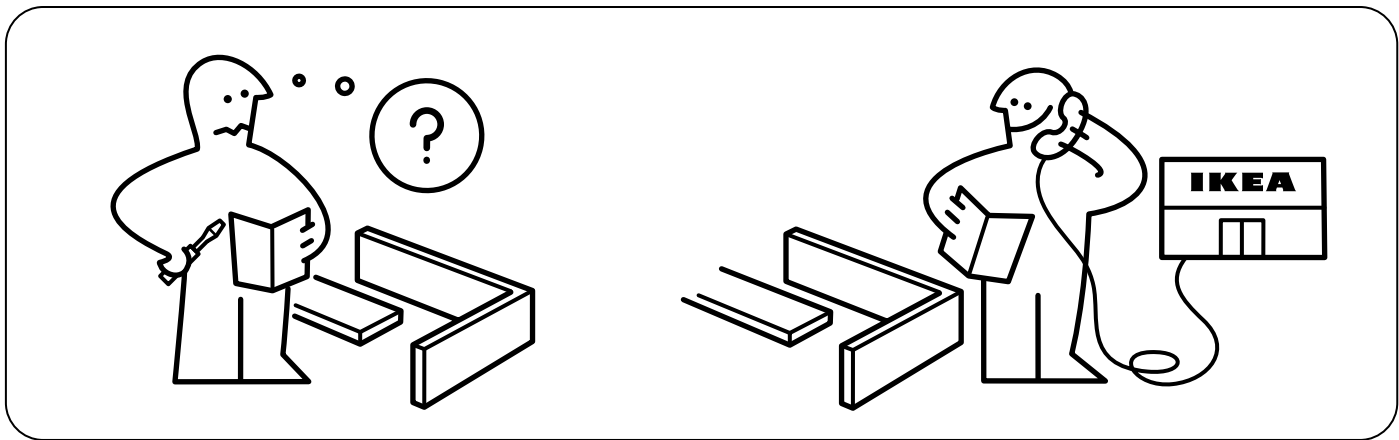
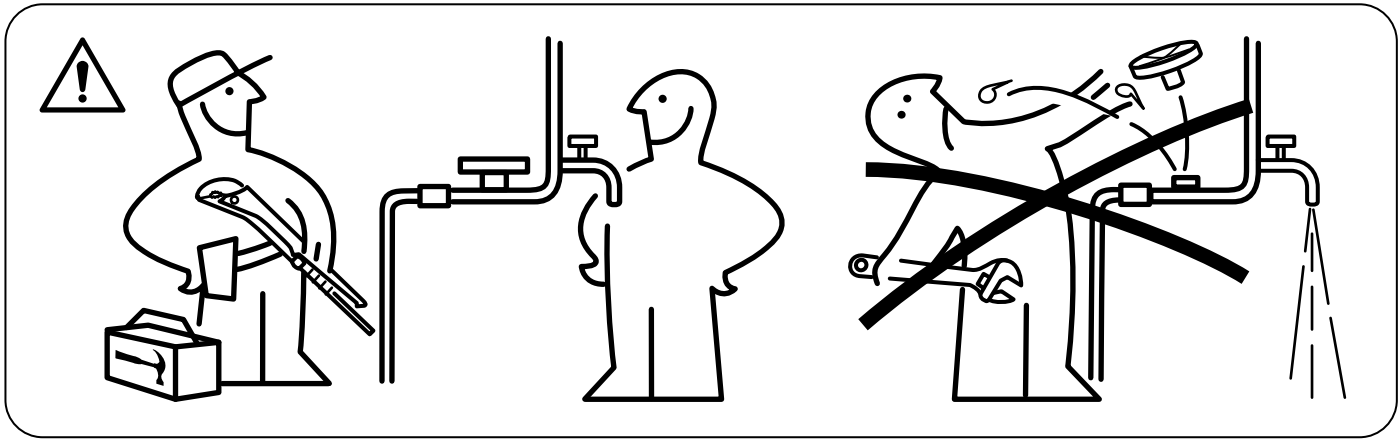
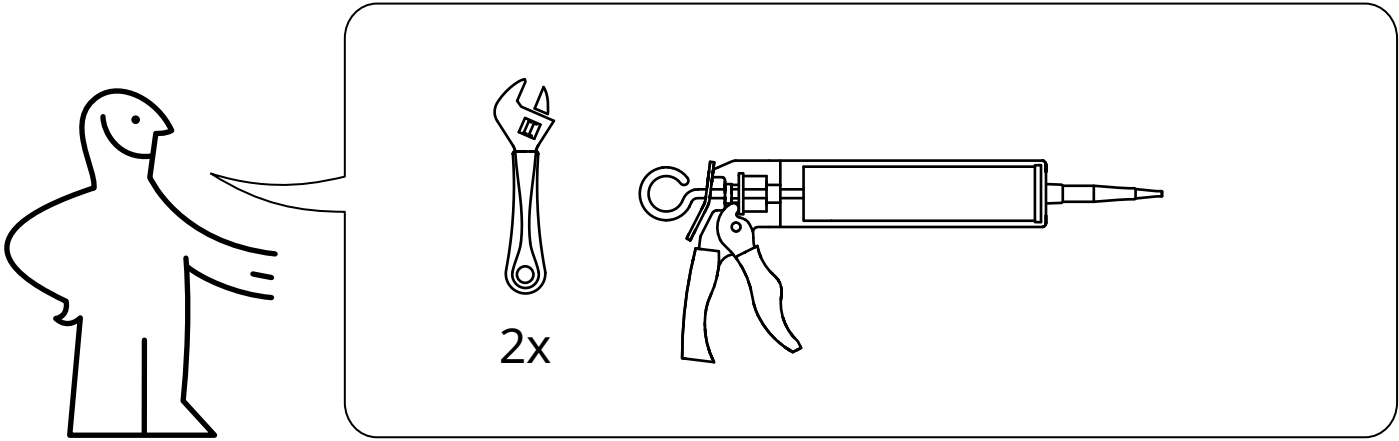
Svenska

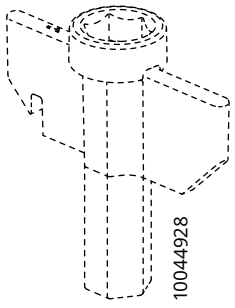
RSK Nr: 8275783, 8275785

English

RSK No: 8275783, 8275785

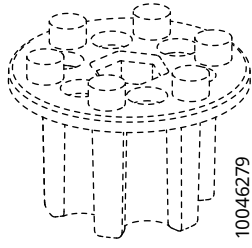






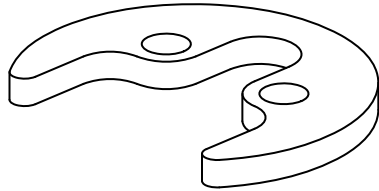
10044928

1x



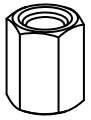
10046279

1x



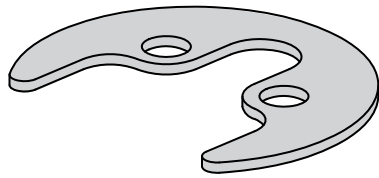
121845

1x



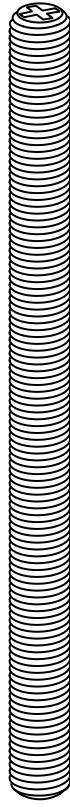
121844

2x



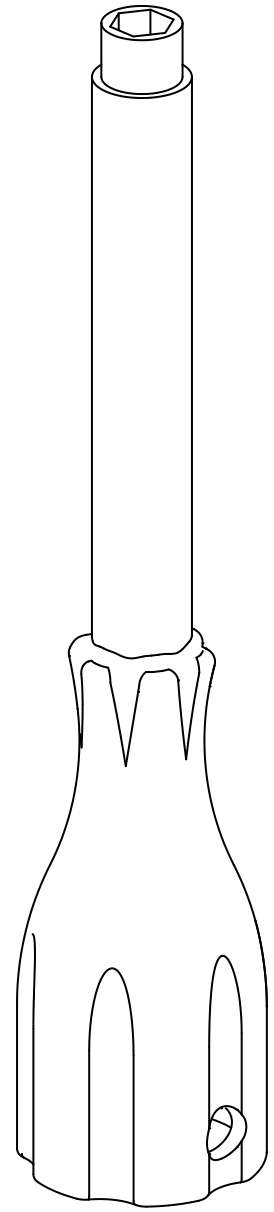
121846

1x



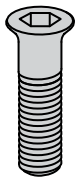
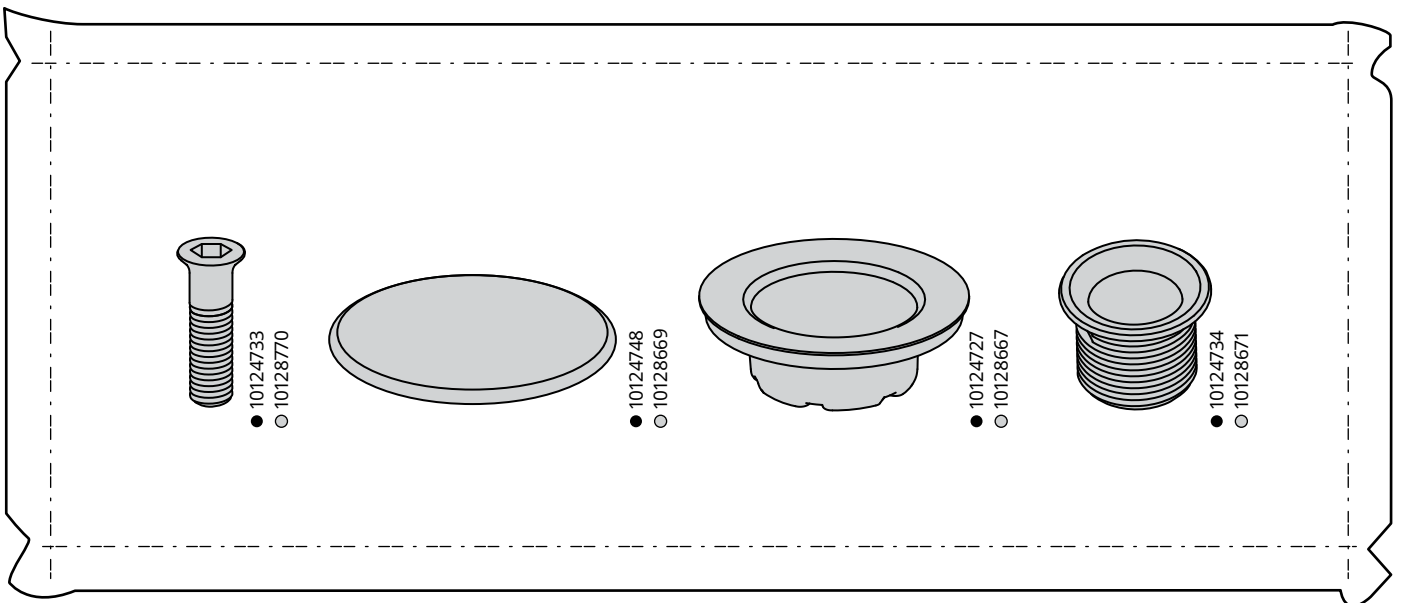
10093113

2x

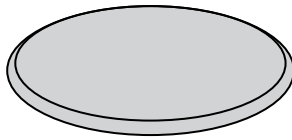


126907

1x



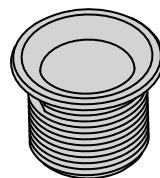
● 10124733
○ 10128770



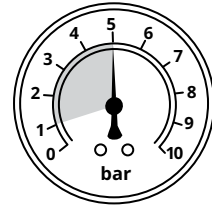
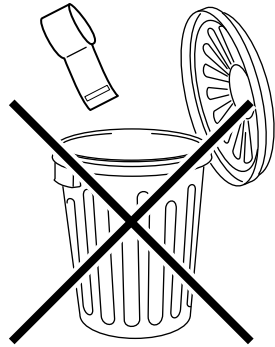
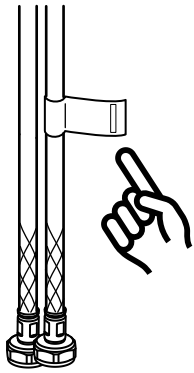
● 10124748
○ 10128669



● 10124727
○ 10128667



● 10124734
○ 10128671



Svenska

Rekommenderad
varmvattentemperatur: 60°C
Max. varmvattentemperatur:
80°C

English

Recommended hot water
temperature: 60°C
Max. hot water temperature:
80°C

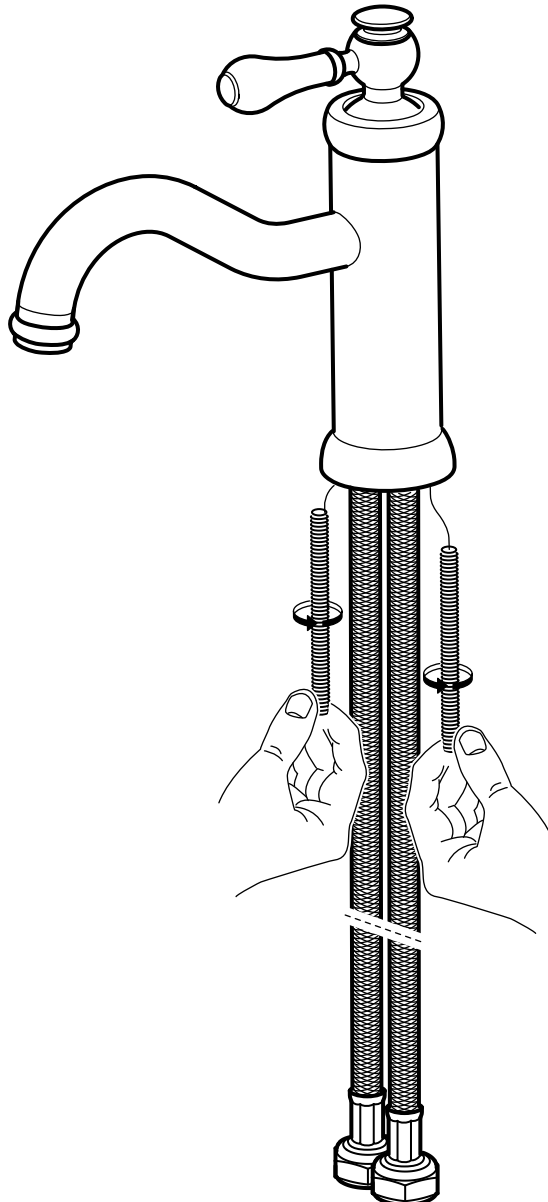
Svenska

Rekommenderat arbetstryck:
1 - 5 bar
Max. statiskt tryck: 10 bar
Max. provningstryck: 16 bar

English

Recommended working
pressure: 1 - 5 bar
Max. static pressure: 10 bar
Max. test pressure: 16 bar

1



2

Svenska

Täta de öppna ytorna med silikon för att förhindra vatten från att tränga in i bänkskivan vid eventuellt läckage. Silikon medföljer ej.

English

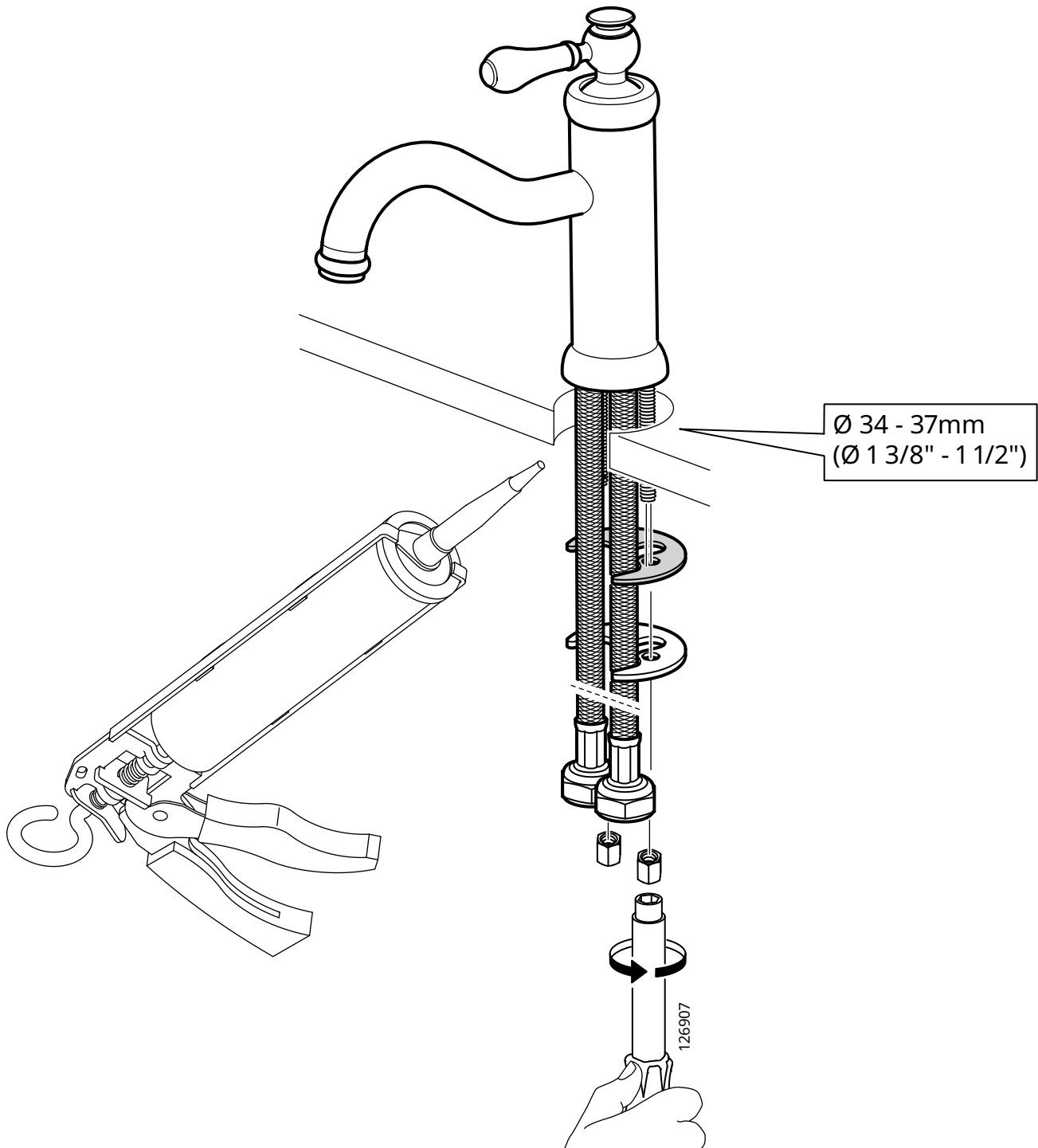
Seal the open surfaces with silicone to prevent water from penetrating the worktop upon any leaks. Silicone is not included.

Svenska

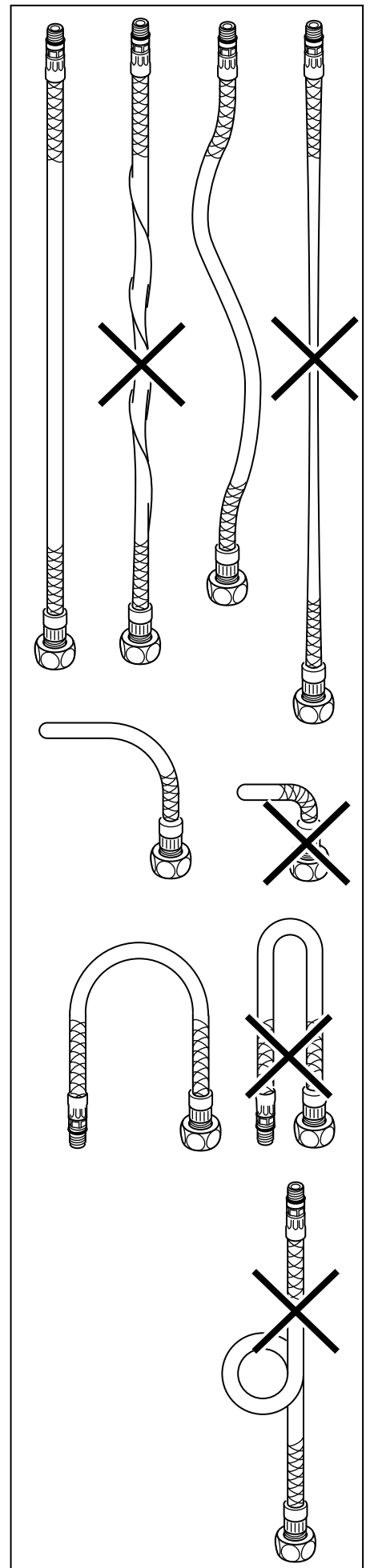
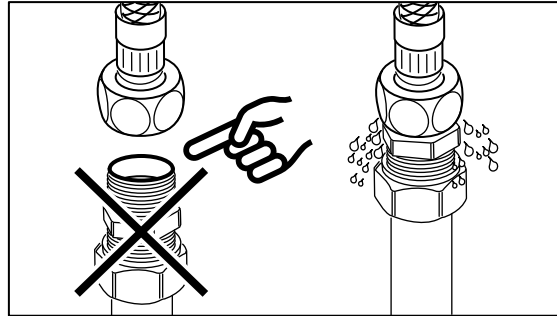
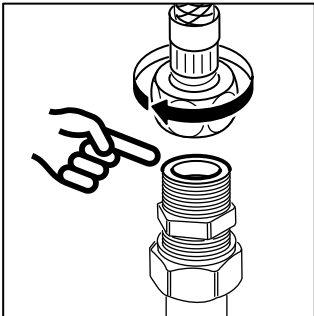
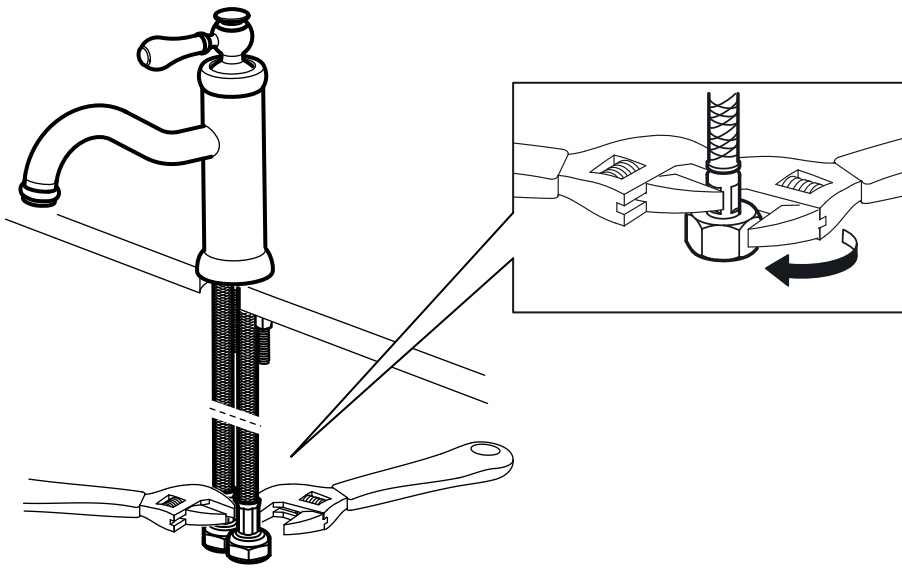
Silikonfogmassan måste vara vatten- och mögelbeständig och lämplig för installationen, i enlighet med EN 15651-3, klass XS1.

English

Silicone sealant must be water- and mould-resistant and suitable for the installation, according to EN 15651-3, Class XS1.



3

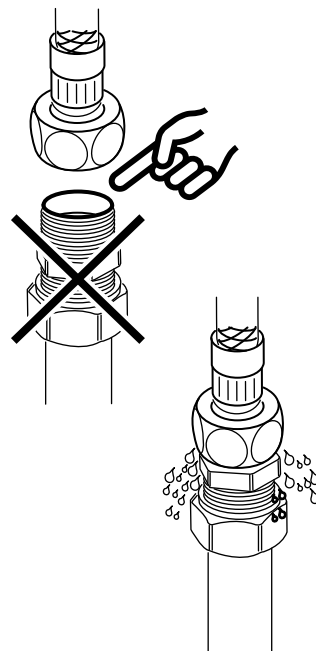


Svenska

Röranslutningen måste vara plan och fri från vassa kanter.

English

The pipe connection needs to be flat and free from sharp edges.

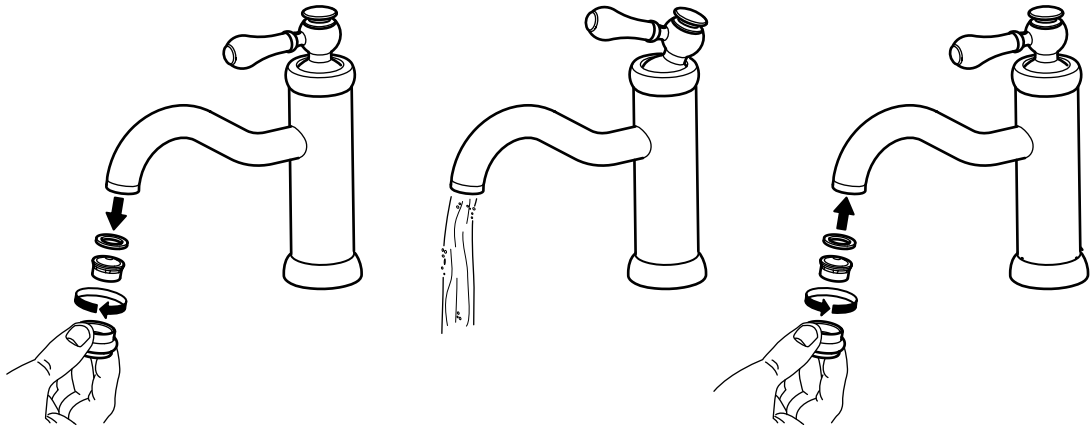


Svenska

OBS! Dra aldrig åt för hårt; slangar och packningar kan skadas.

English

IMPORTANT! Do not tighten too hard: this can damage hoses/pipes and washers.



Svenska

Innan användning: skruva loss filtret och låt vatten rinna igenom några minuter. Skruva sedan på filtret igen.

Dra åt tillräckligt hårt så att det inte går att lossa för hand.

English

Before use: Unscrew the Aerator/Flow Guide and allow the water to run freely for a few minutes. Then screw the Aerator/Flow Guide back in place. Ensure that it is tight to prevent removal by hand.



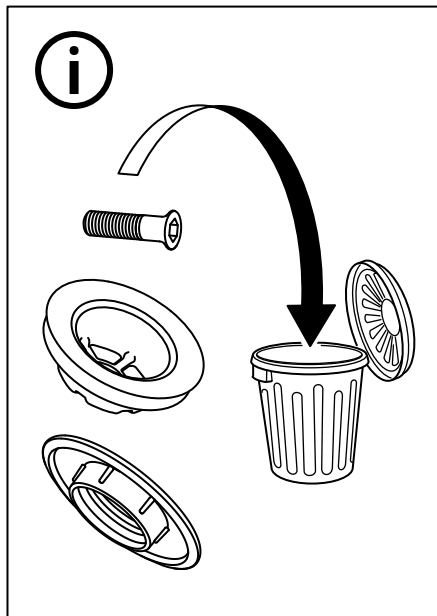
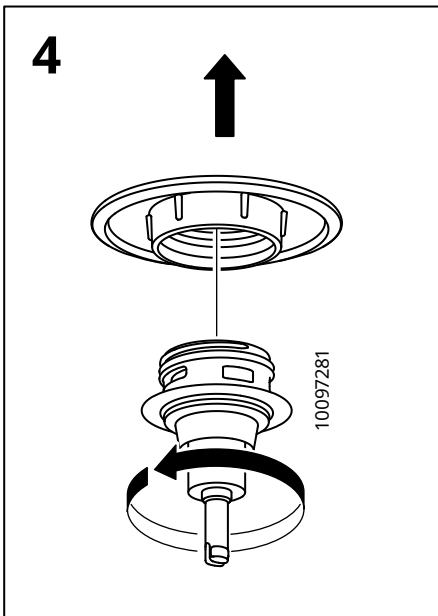
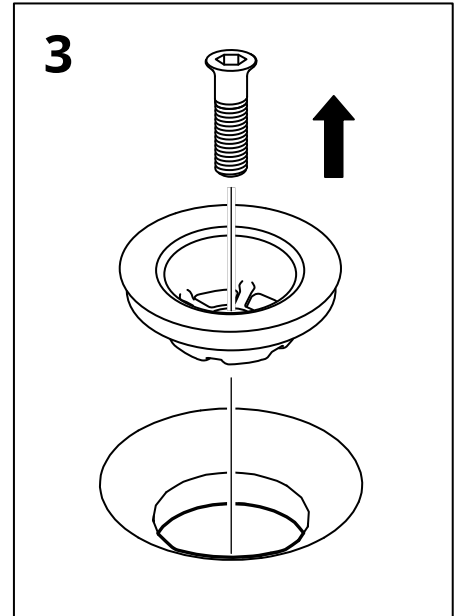
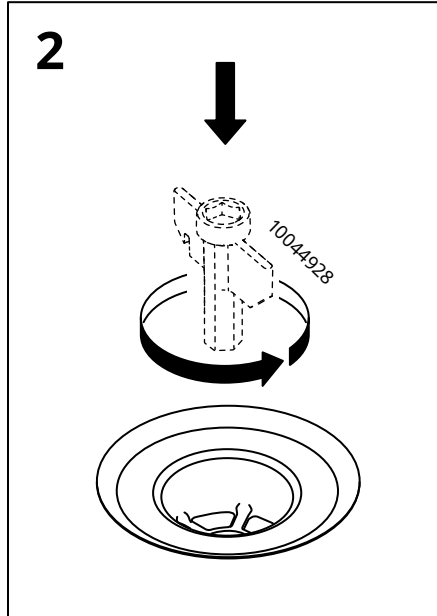
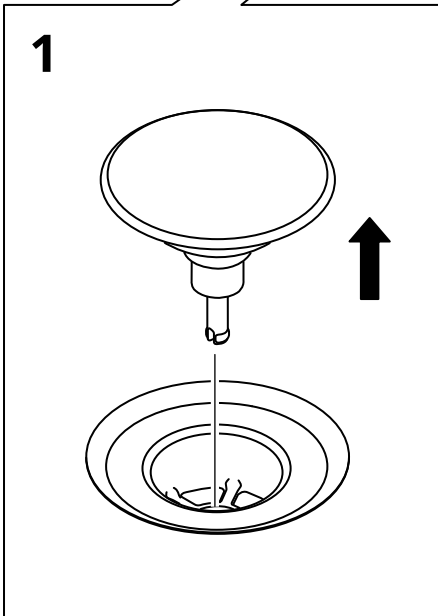
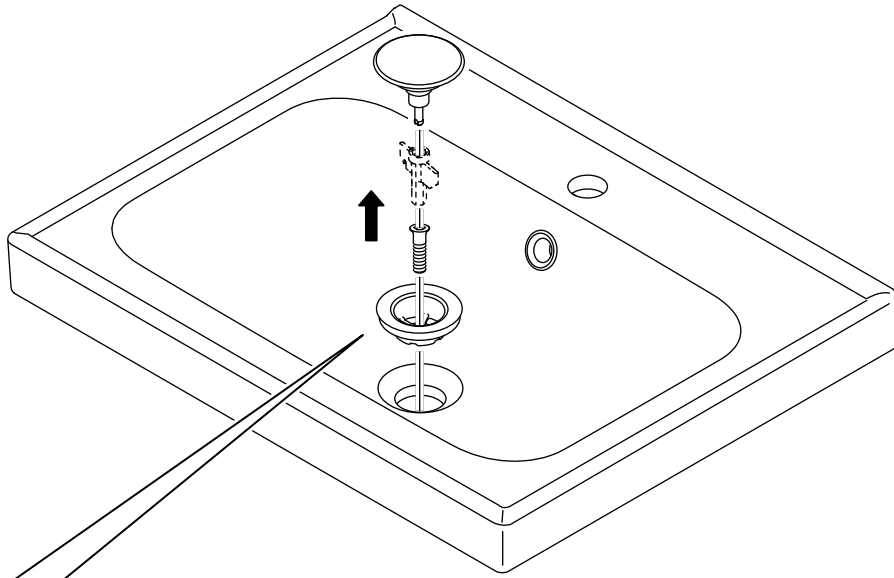
Svenska

Kontrollera regelbundet att installationen är tät.

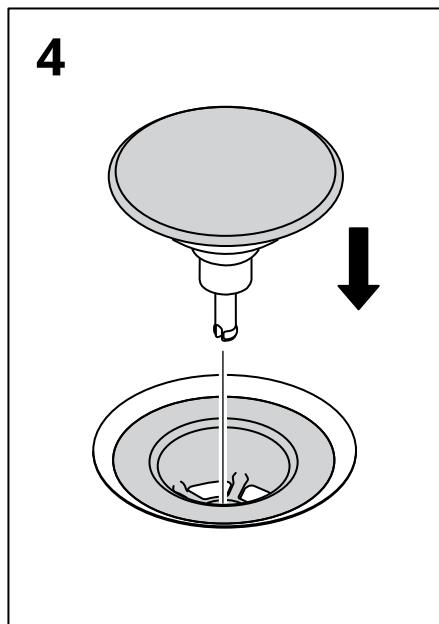
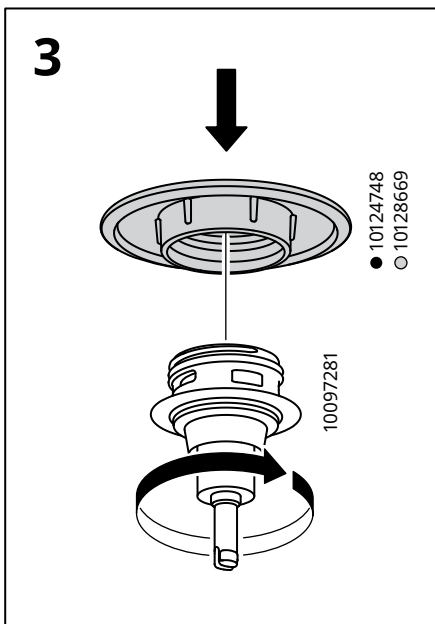
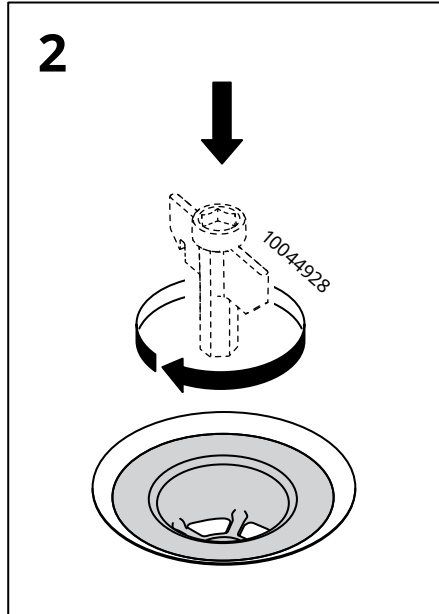
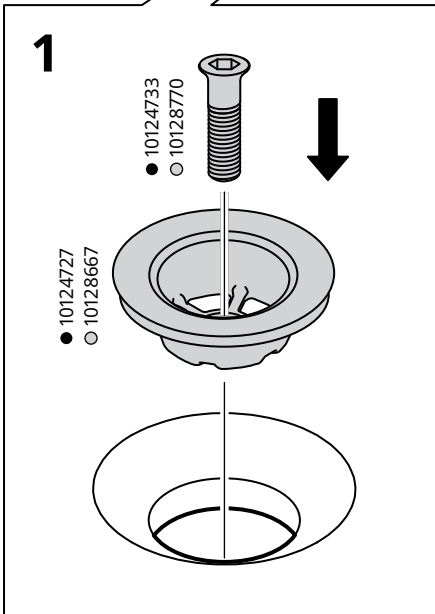
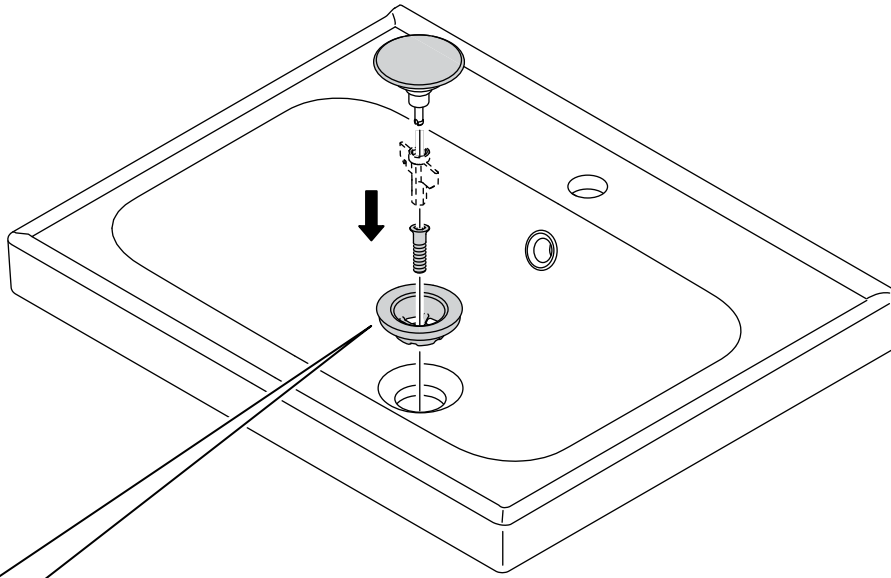
English

Check at regular intervals to make sure that the installation is not leaking.

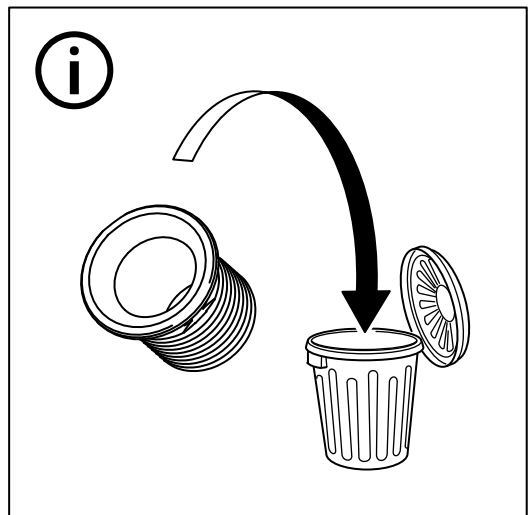
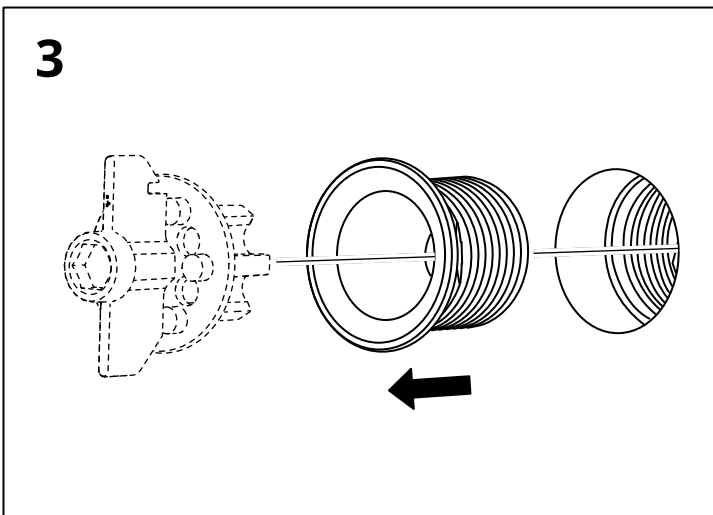
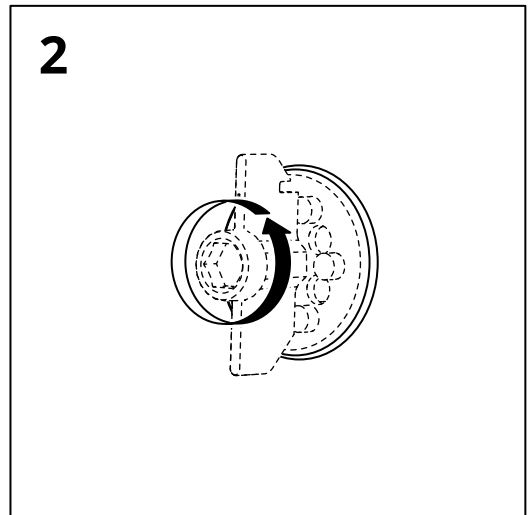
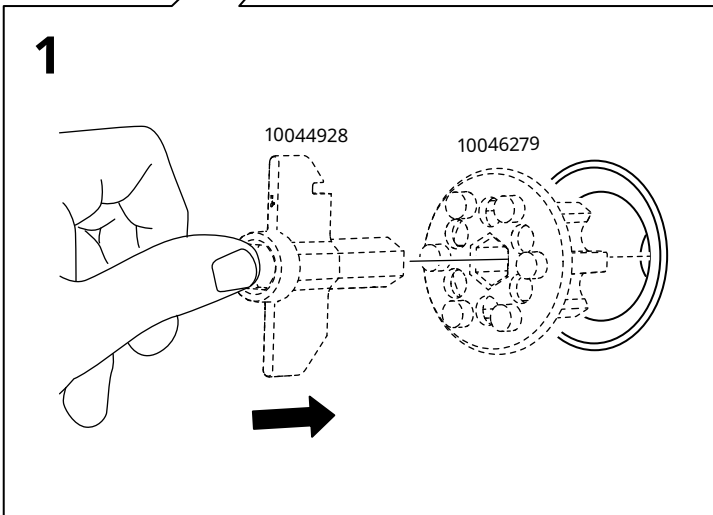
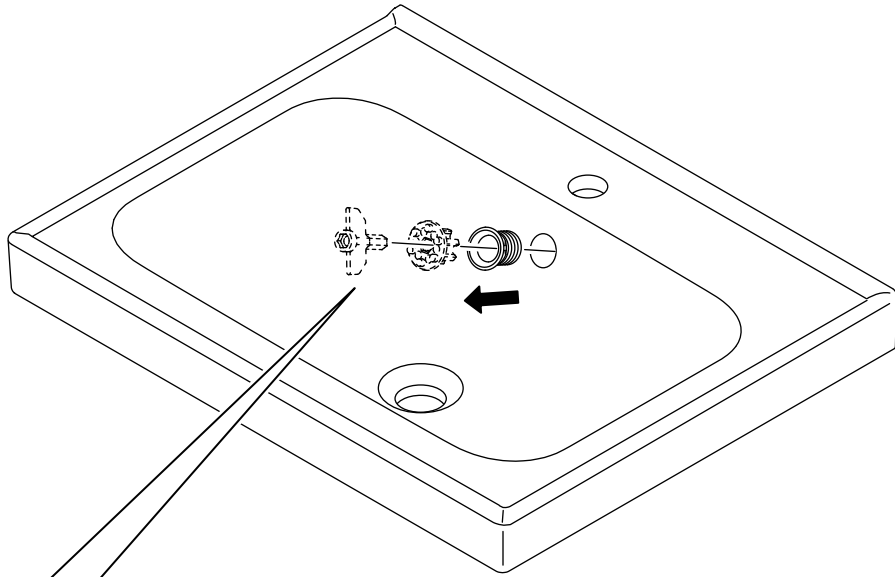
4



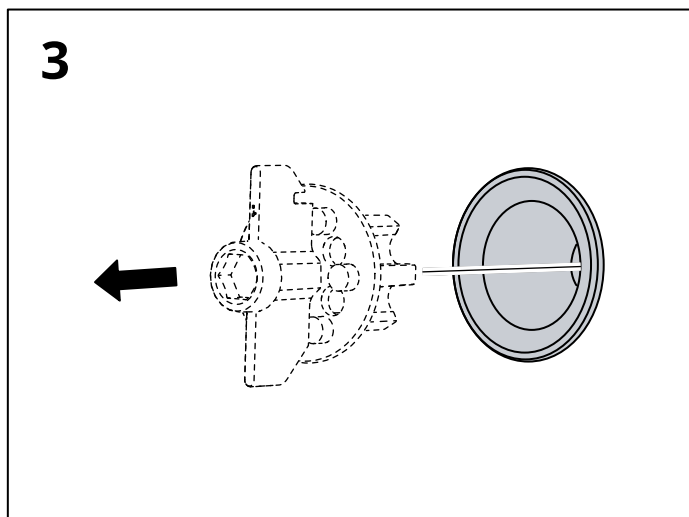
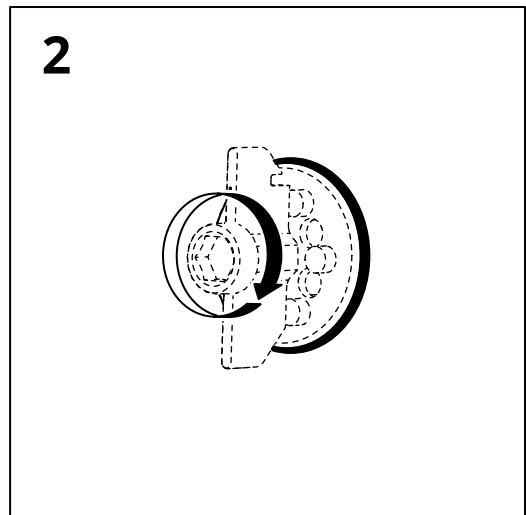
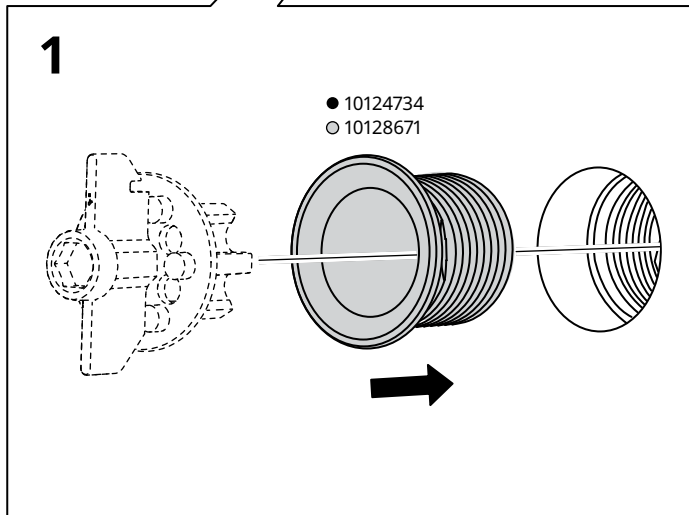
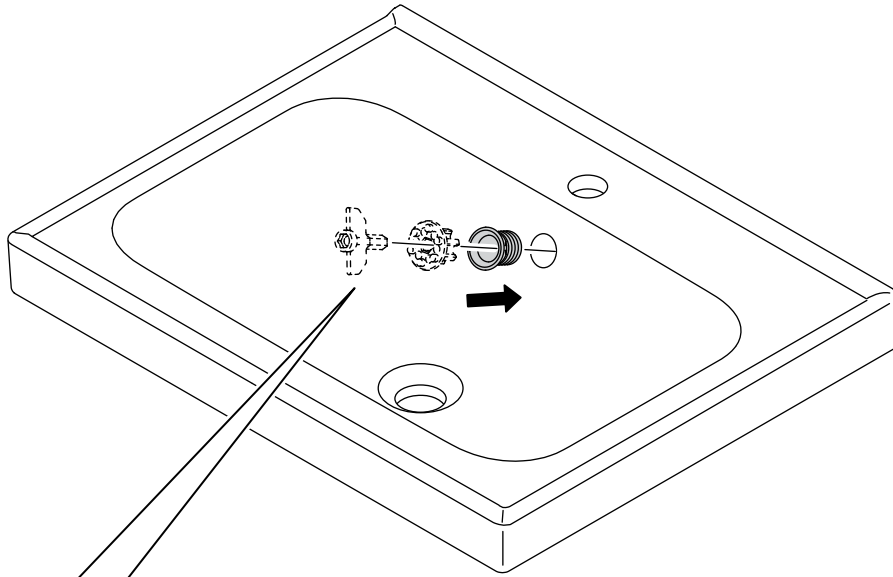
5

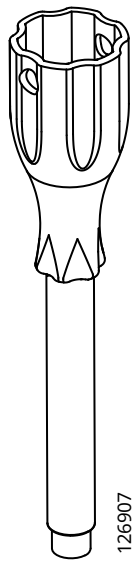


6



7

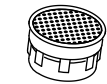




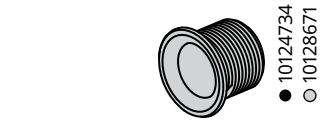
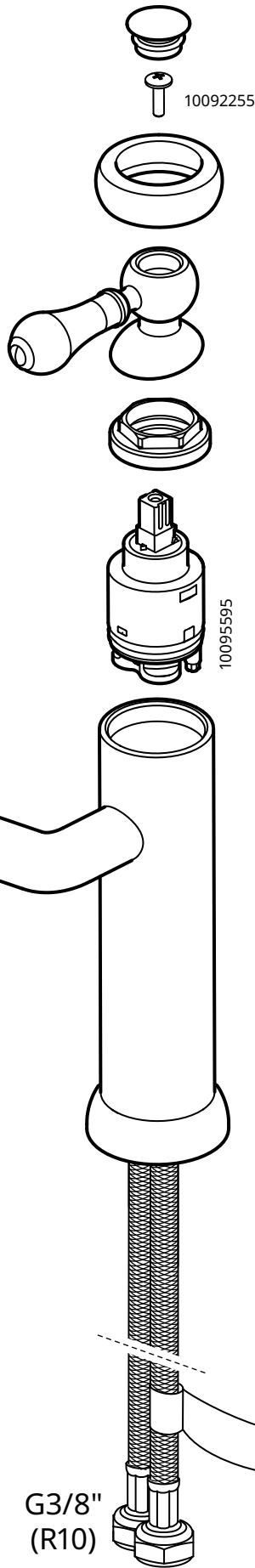
126907



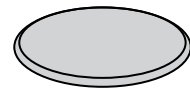
10004087



10091769



● 10124734
○ 10128671



● 10124748
○ 10128669



● 10124733
○ 10128770



● 10124727
○ 10128667



10093113



121846



121845



121844