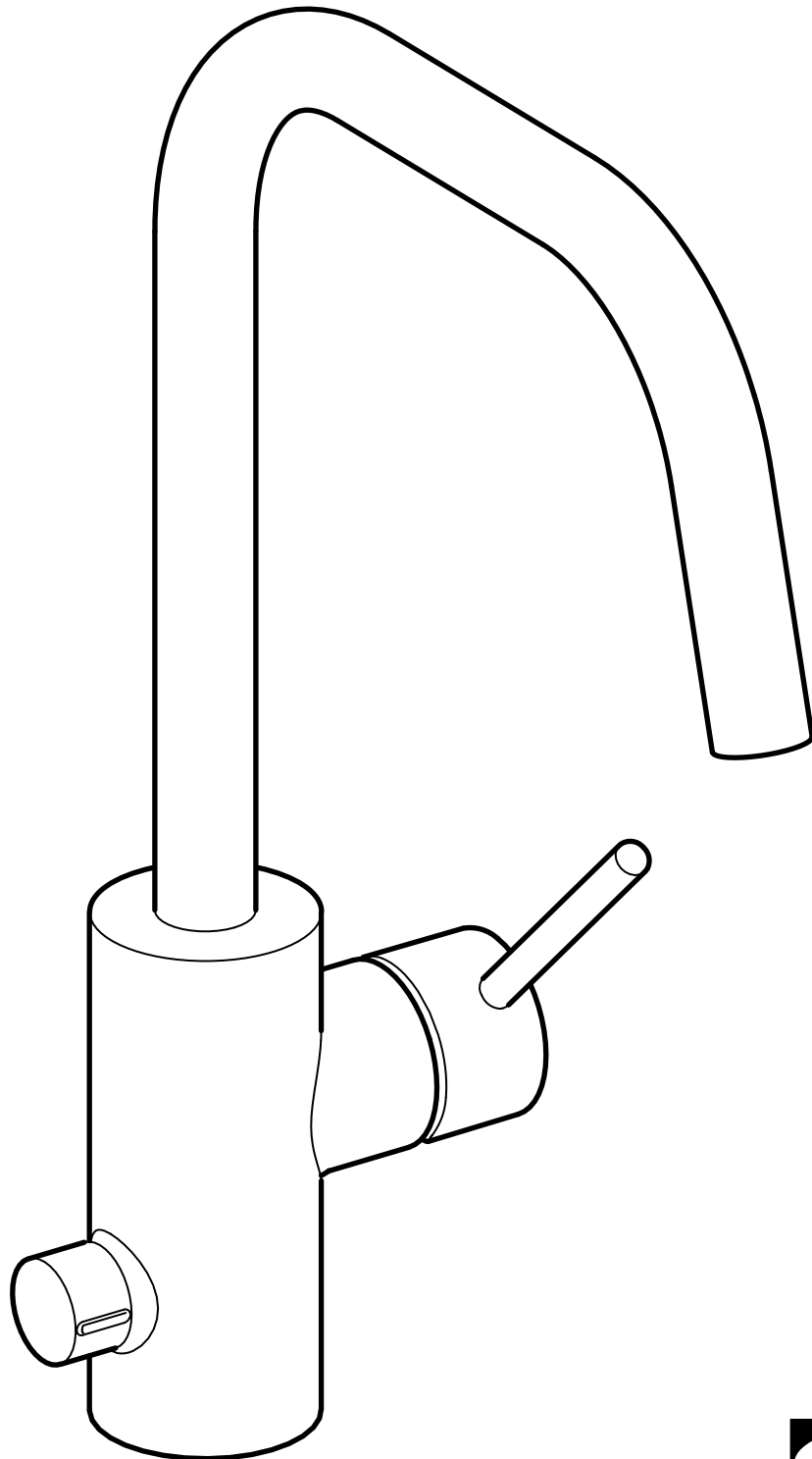


ÄLMAREN



Design and Quality
IKEA of Sweden

Svenska**Innehåll**

Verktyg och reservdelar	4
Illustration av produkt, delar och artikelnummer	6
Montering av produkt	7

English**Contents**

Tools and spare parts	4
Illustration of product, parts and part numbers	6
Product assembly	7



Svenska

Stäng av huvudkranen innan du byter blandare.

English

Switch off main shut-off valve before changing mixer tap.



Svenska

Installationen ska utföras i enlighet med branschreglerna Säker Vatteninstallation.

English

Installation shall be carried out in accordance with Industry Regulations Säker Vatteninstallation.



Accepterad
monteringsanvisning
2026:1



TG 1719



1913

EN 817 | EN 1717

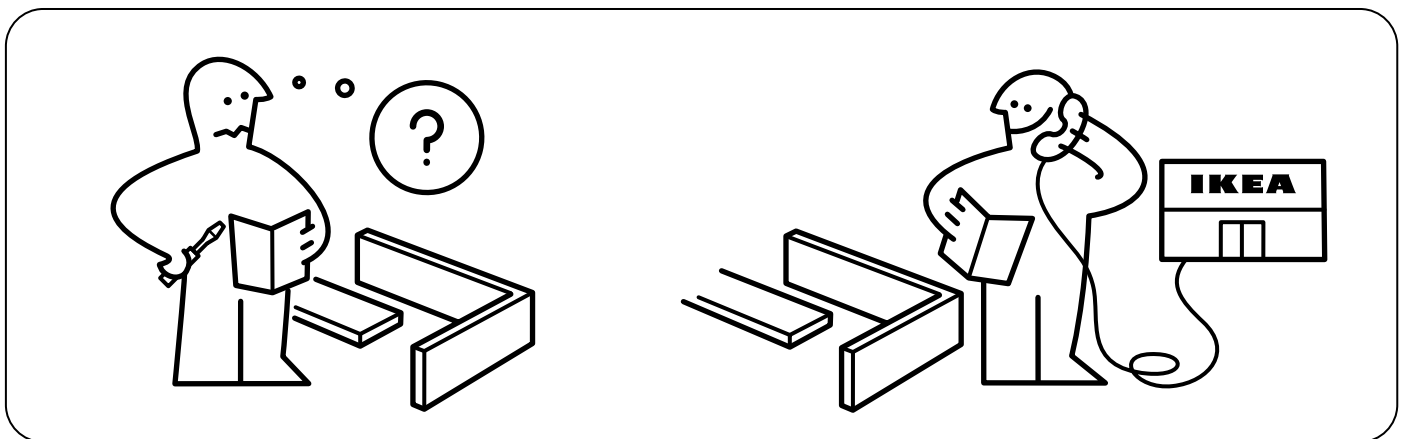
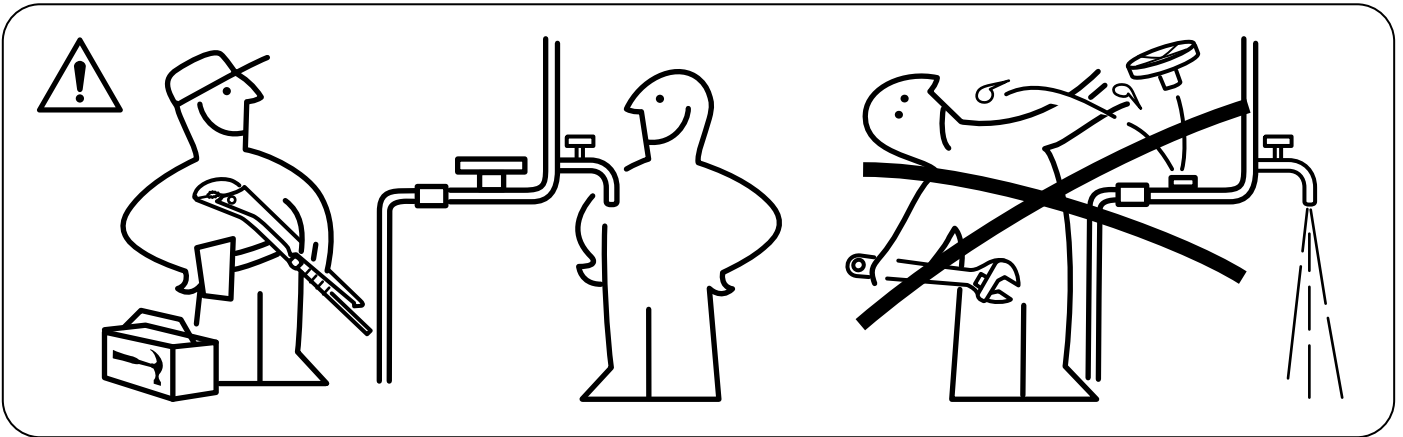
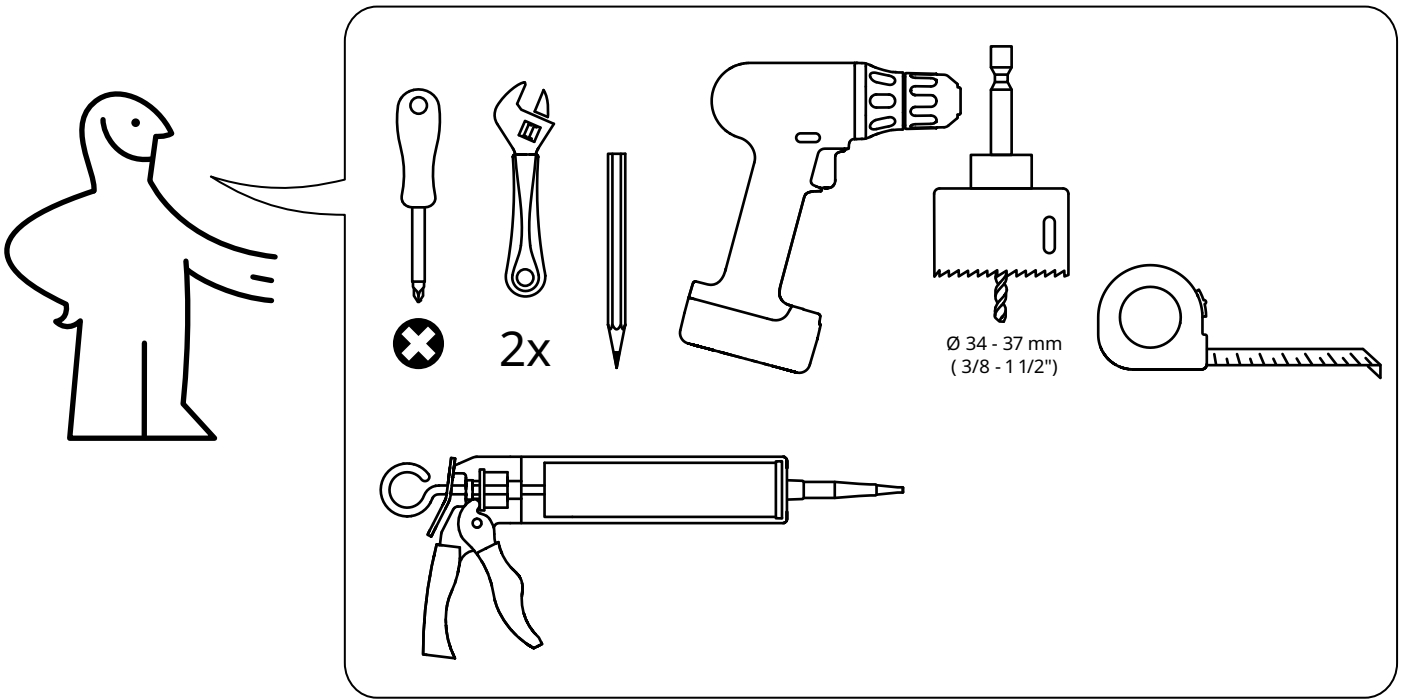
Svenska

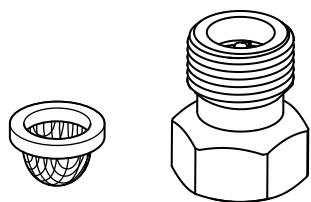
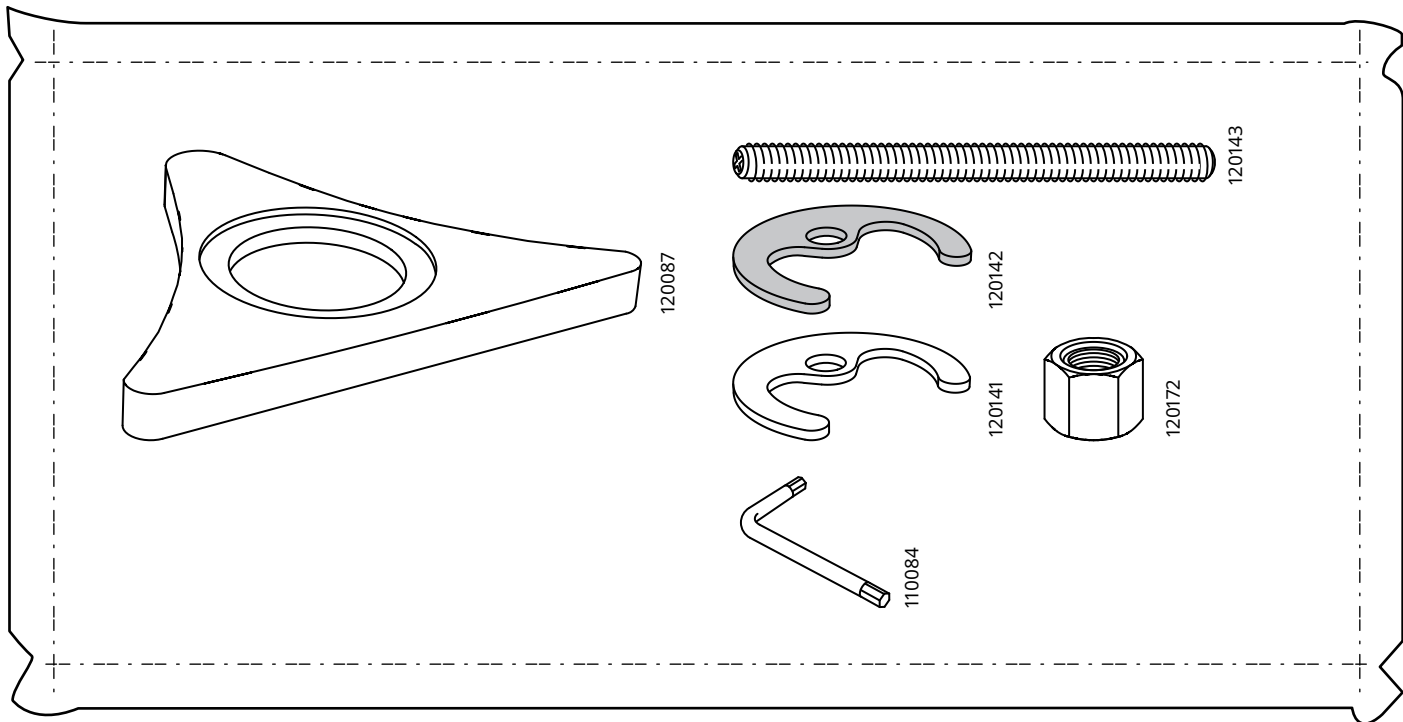
RSK Nr: 8312180

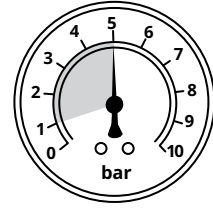
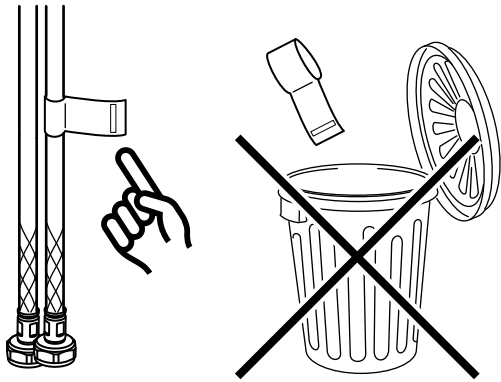
English

RSK No: 8312180









Svenska

Rekommenderad
varmvattentemperatur: 60°C
Max. varmvattentemperatur:
80°C

English

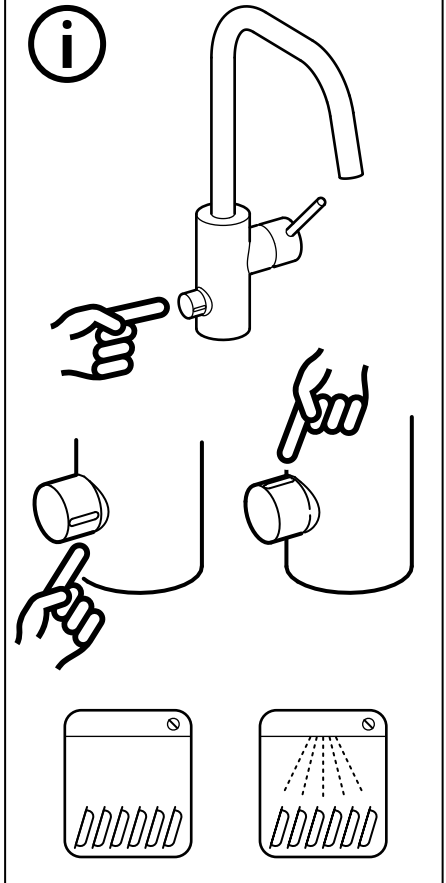
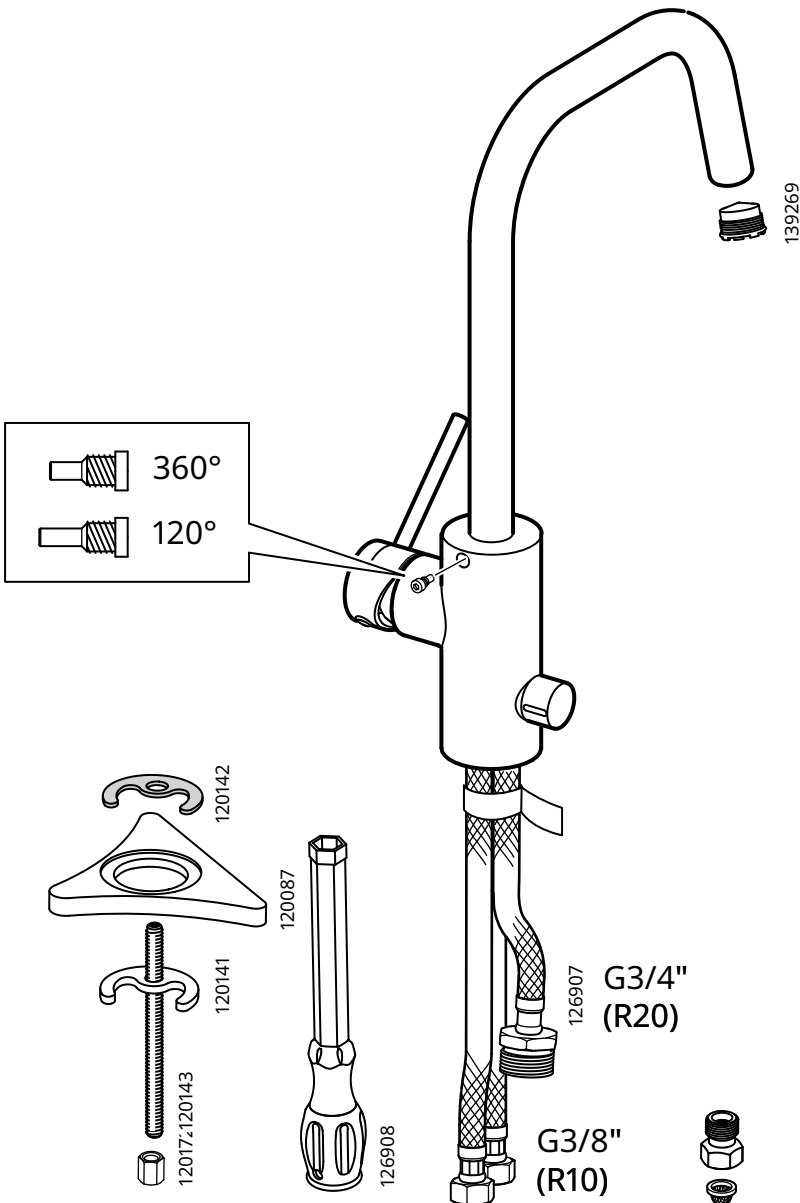
Recommended hot water
temperature: 60°C
Max. hot water temperature:
80°C

Svenska

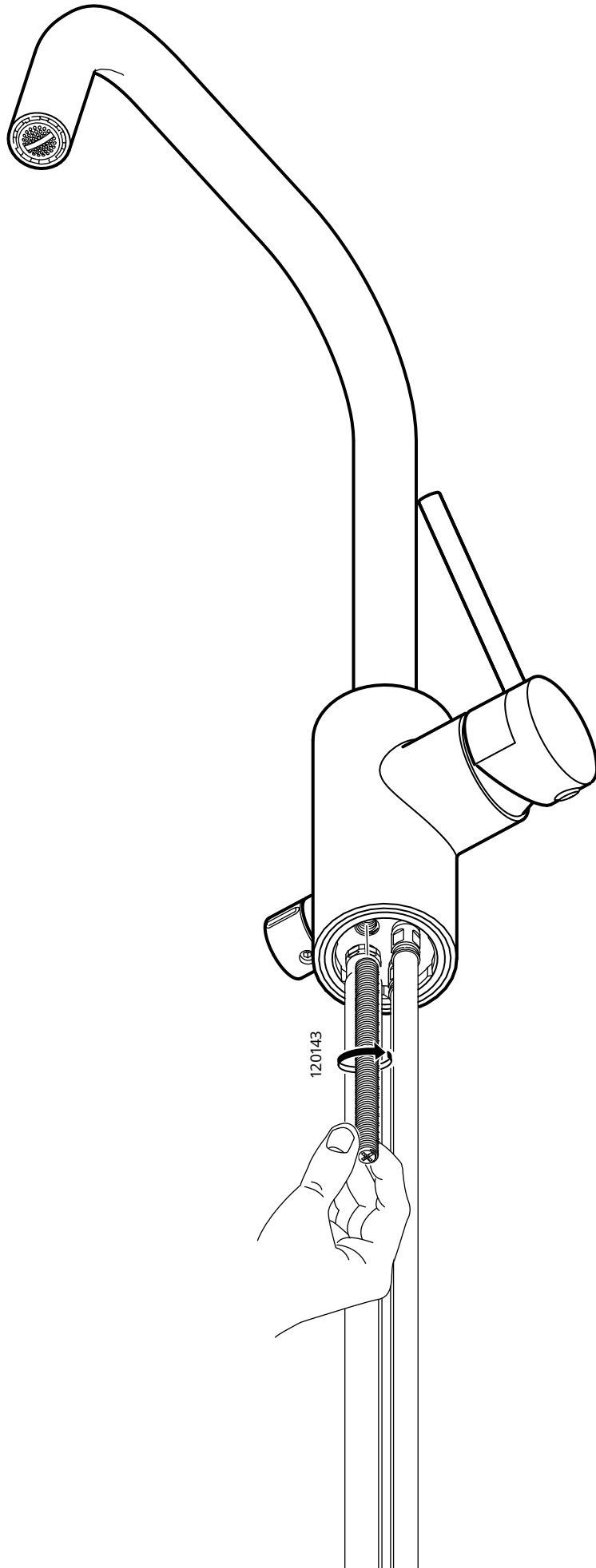
Rekommenderat arbetstryck:
1 - 5 bar
Max. statiskt tryck: 10 bar
Max. provningstryck: 16 bar

English

Recommended working
pressure: 1 - 5 bar
Max. static pressure: 10 bar
Max. test pressure: 16 bar



1



Svenska

Täta de öppna ytorna med silikon för att förhindra vatten från att tränga in i bänkskivan vid eventuellt läckage. Silikon medföljer ej.

English

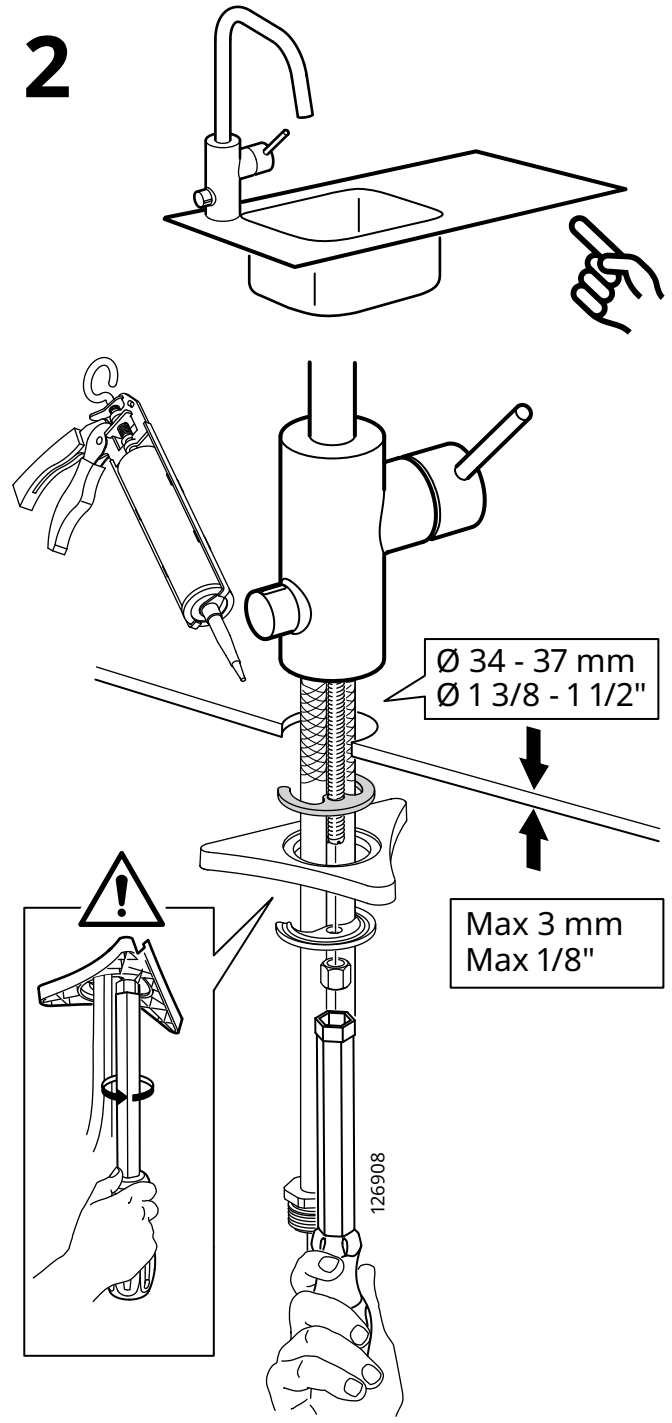
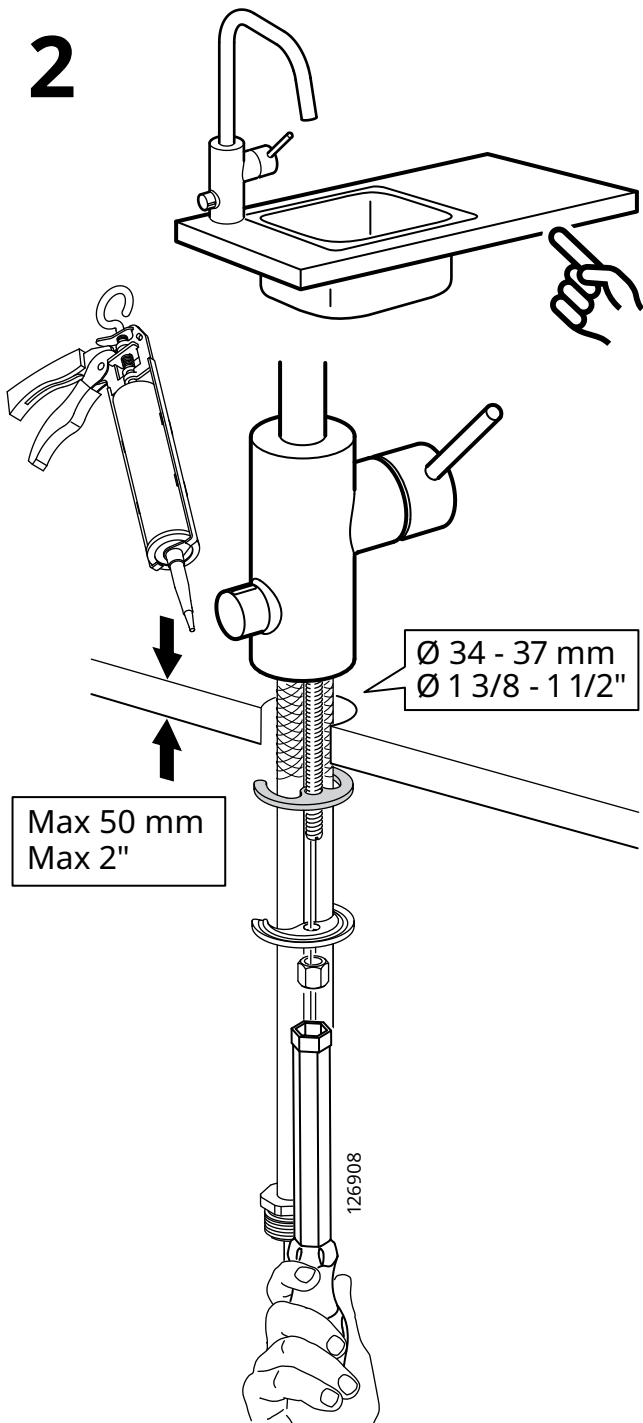
Seal the open surfaces with silicone to prevent water from penetrating the worktop upon any leaks. Silicone is not included.

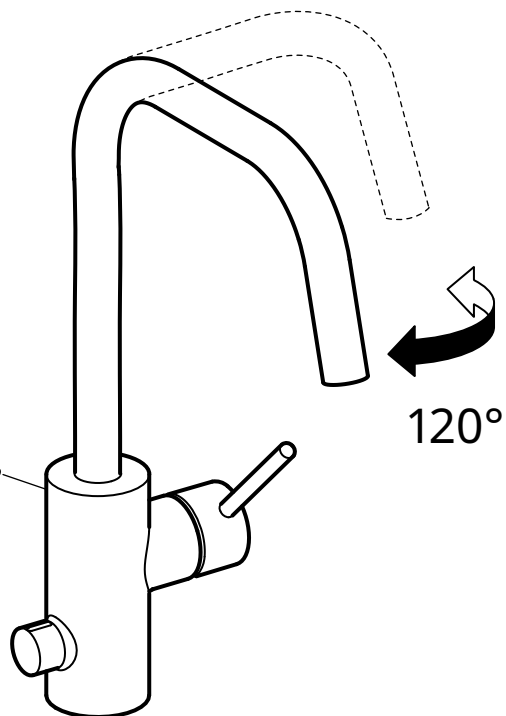
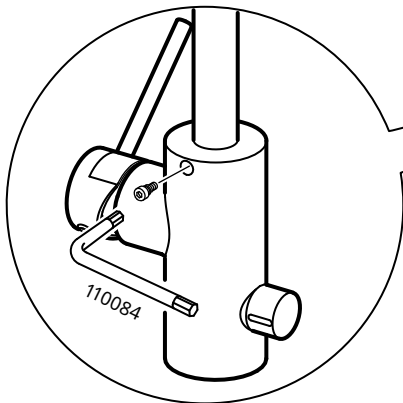
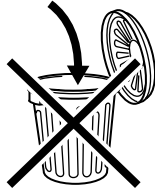
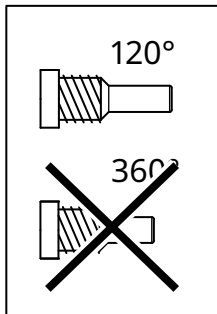
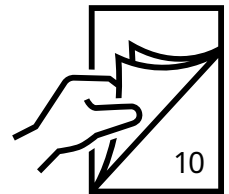
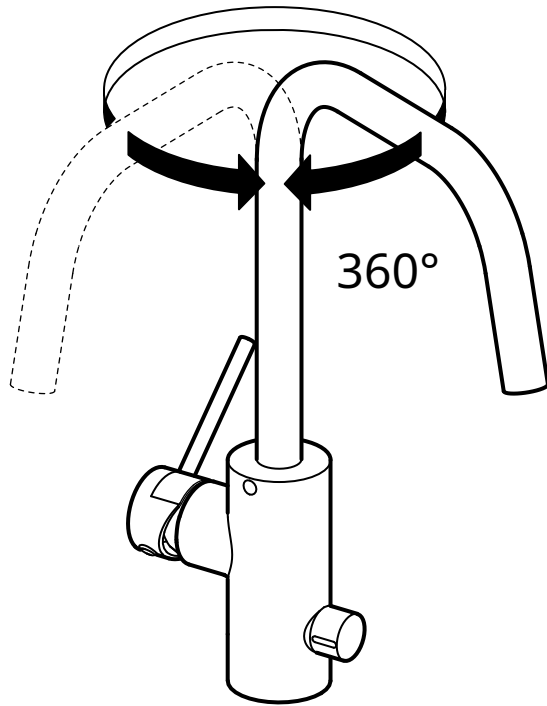
Svenska

Silikonfogmassan måste vara vatten- och mögelbeständig och lämplig för installationen, i enlighet med EN 15651-3, klass XS1.

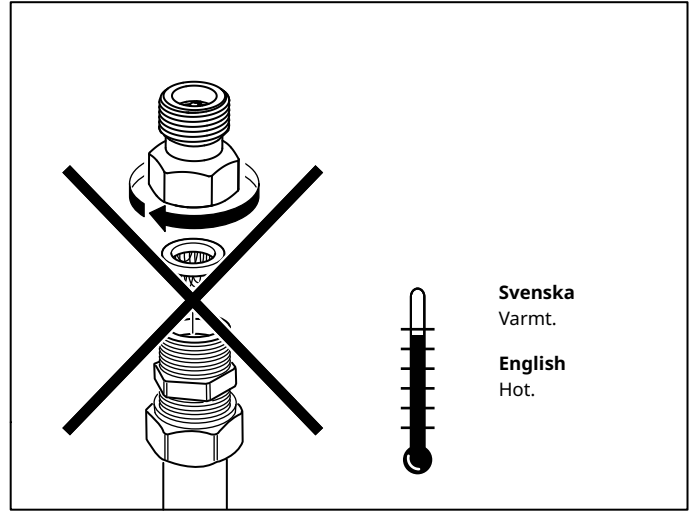
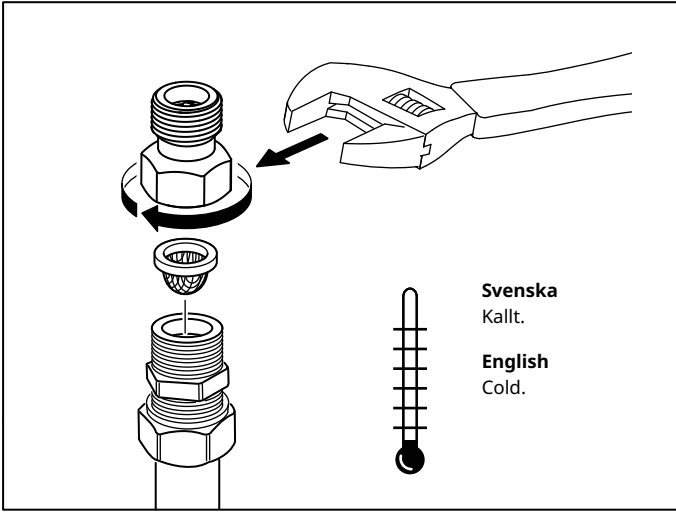
English

Silicone sealant must be water- and mould-resistant and suitable for the installation, according to EN 15651-3, Class XS1.

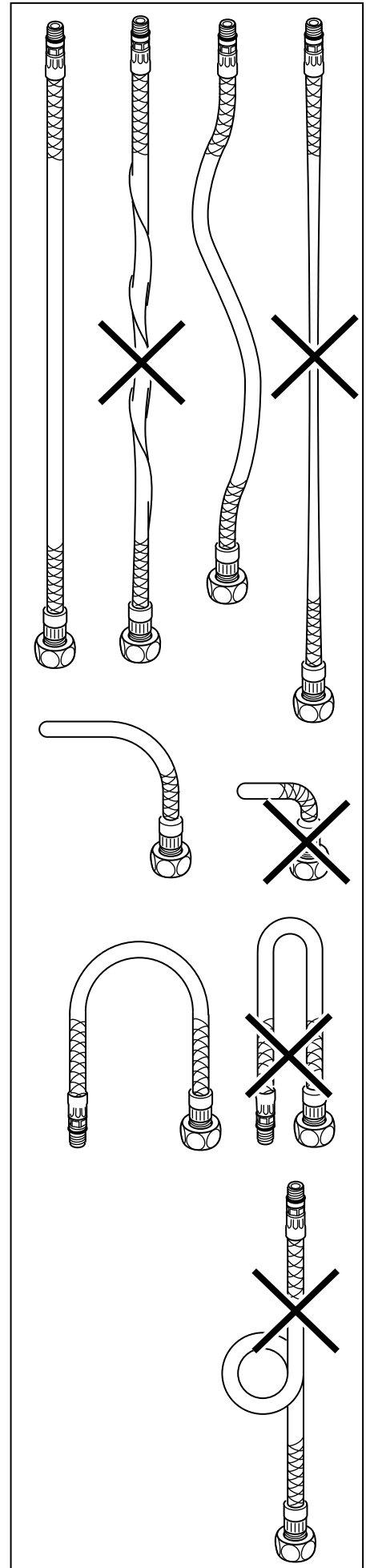
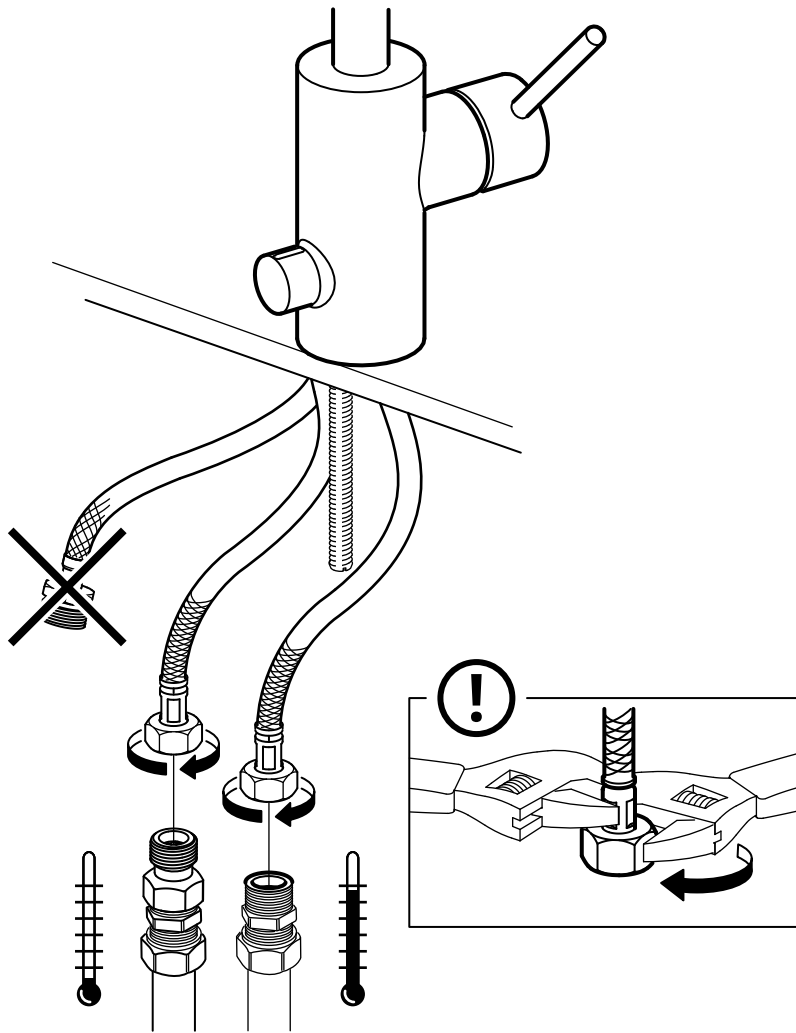




3



4



Svenska

Röranslutningen måste vara plan och fri från vassa kanter.

English

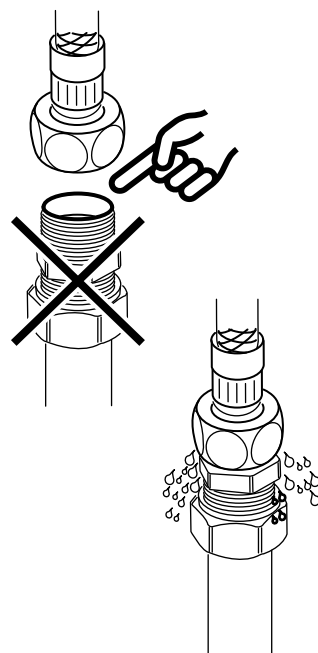
The pipe connection needs to be flat and free from sharp edges.

Svenska

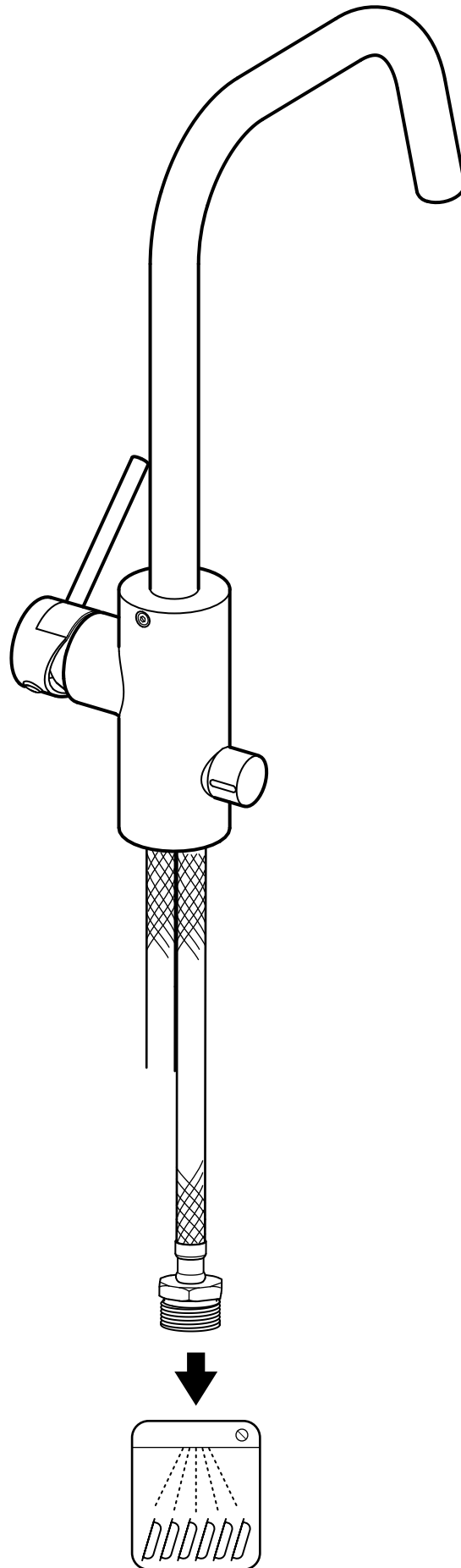
OBS! Dra aldrig åt för hårt; slangar och packningar kan skadas.

English

IMPORTANT! Do not tighten too hard: this can damage hoses/pipes and washers.



5



Svenska

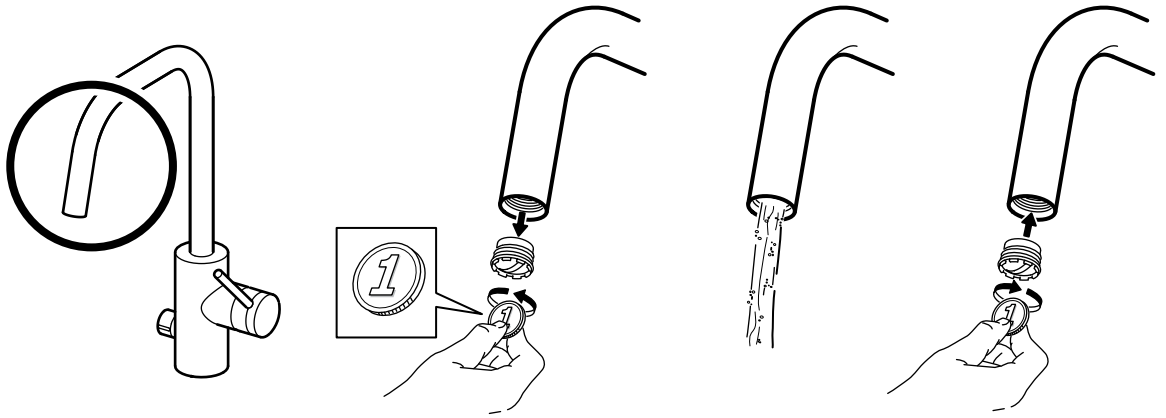
Varning!

Risk för egendomsskada. Om diskmaskinsanslutning inte behövs måste den tätas med en G3/4" (R20) mässingspropp.

English

Warning!

Risk of property damage. If dishwasher connection is not required it must be capped with a G3/4" (R20) brass plug.



Svenska

Innan användning: skruva loss filtret med ett mynt och låt vatten rinna igenom några minuter. Skruva sedan på filtret igen.
OBS! Dra inte åt för hårt; filtret kan skadas.

English

Before use: Unscrew the Aerator/Flow Guide with a coin and allow the water to run freely for a few minutes. Then screw the Aerator/Flow Guide back in place up to the stop DO NOT OVER TIGHTEN.

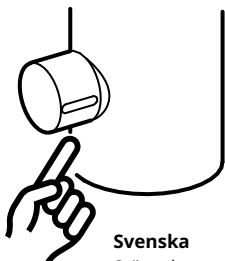
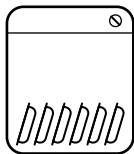


Svenska

Kontrollera regelbundet att installationen är tät.

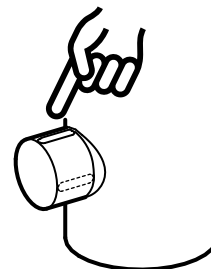
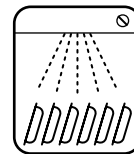
English

Check at regular intervals to make sure that the installation is not leaking.



Svenska
Stängd.

English
Closed.



Svenska
Öppen.

English
Open.