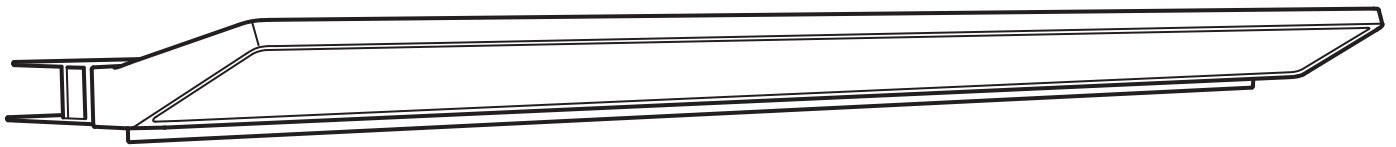


# TREASJÖN



Design and Quality  
IKEA of Sweden



#### English

##### IMPORTANT!

Always shut off power to the circuit before starting installation work. In some countries electrical installation work may only be carried out by a authorised electrical contractor. Contact your local electricity authority for advice.

##### INSTALLATION IN BATHROOMS

The installation shall be carried out by an authorised electrical contractor. The luminaire must be permanently installed in the electric system and placed in the correct zone.

Different materials require different types of fittings. Always choose screws and plugs that are specially suited to the material.

#### English

The independent LED driver shall not be used in close proximity to or under building thermal insulation.

#### English

This product contains a light source of energy efficiency class E.

#### עברית

##### חשוב!

נתקו את זרם החשמל לפני תחילת תהליך ההתקנה. במדינות מסוימות על ההתקנה להתבצע על ידי חשמלאי מוסמך בלבד. מומלץ ליצור קשר עם חברת החשמל ולקבל מידע בנושא זה.

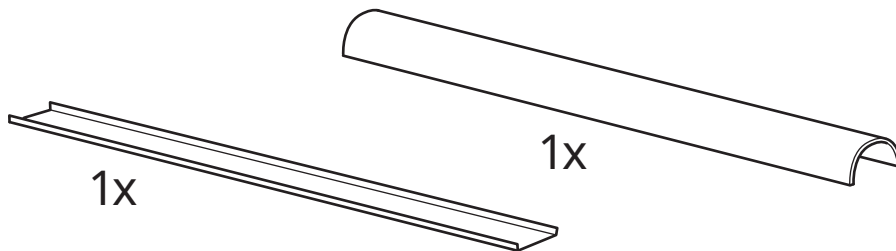
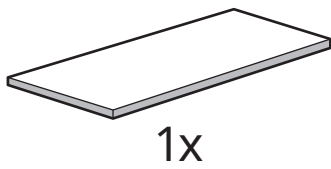
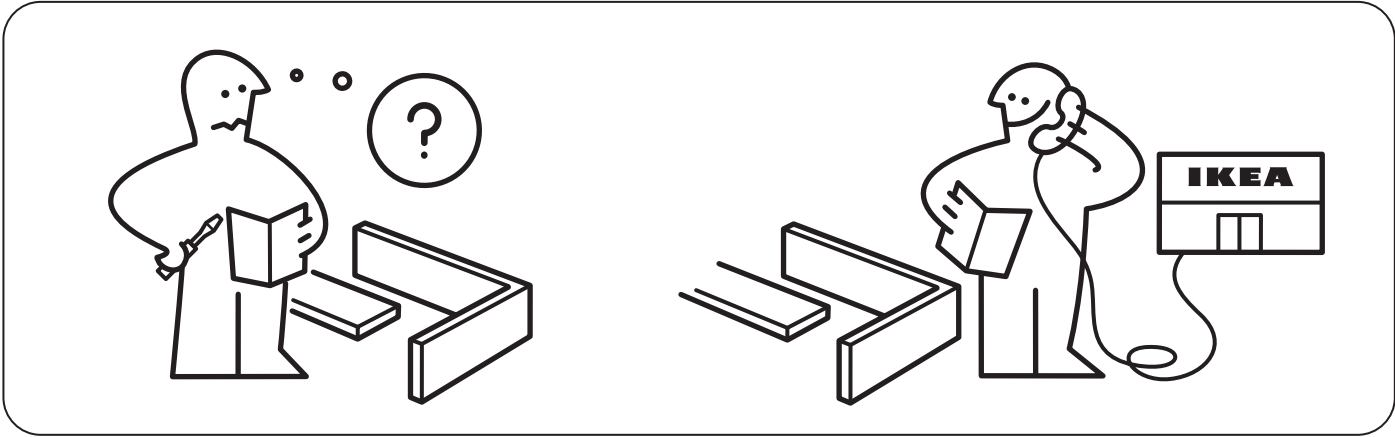
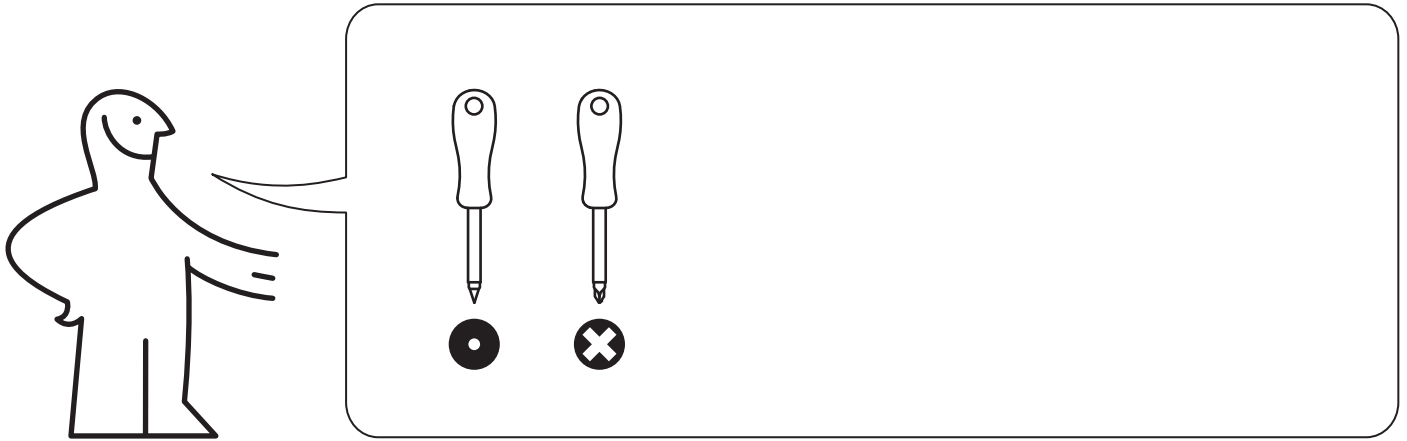
התקנה בחדרי אמבטיות  
התקנה על ידי חשמלאי מוסמך בלבד. יש לחבר את המנורה לרשת החשמל בחיבור קבע. חומרים שונים מצריכים שימוש בסוגי ברגים שונים. יש לבחור ברגים ודיבלים המתאימים לחומר ממנו עשוי המשטח אליו מחברים את המוצר.

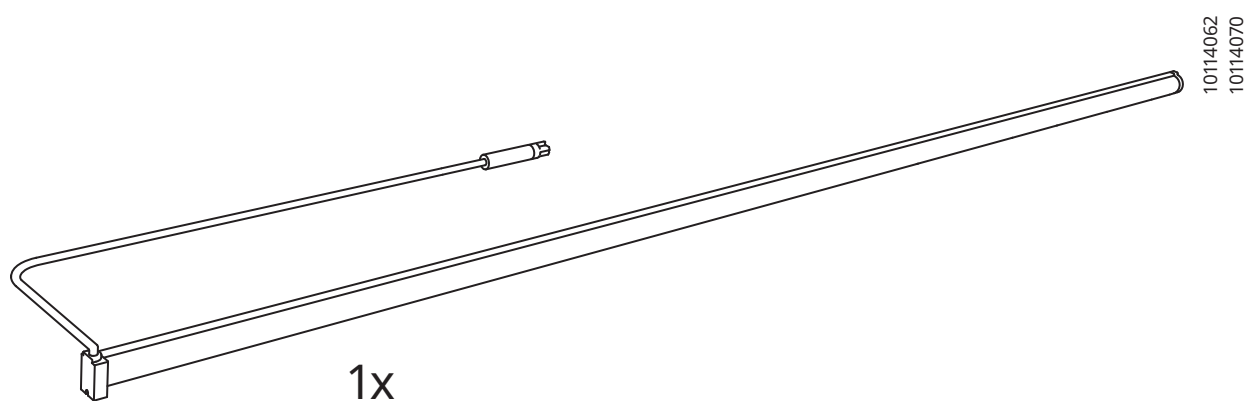
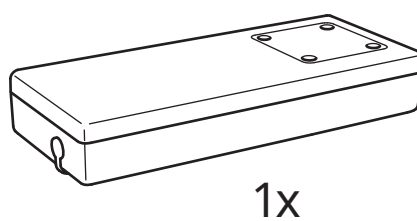
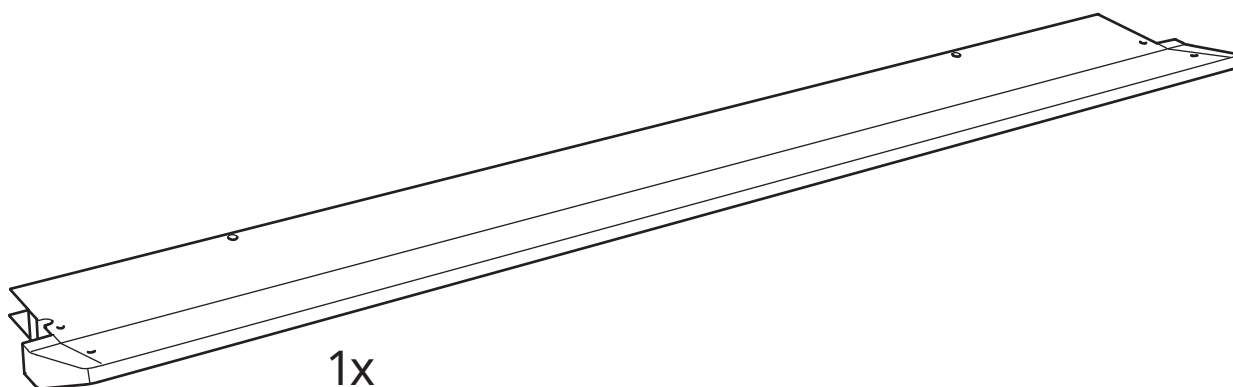
#### עברית

אין להשתמש בדרייבר LED לשליטה אלחוטית בסמיכות או מתחת לשכבת בידוד תרמי של הבית.

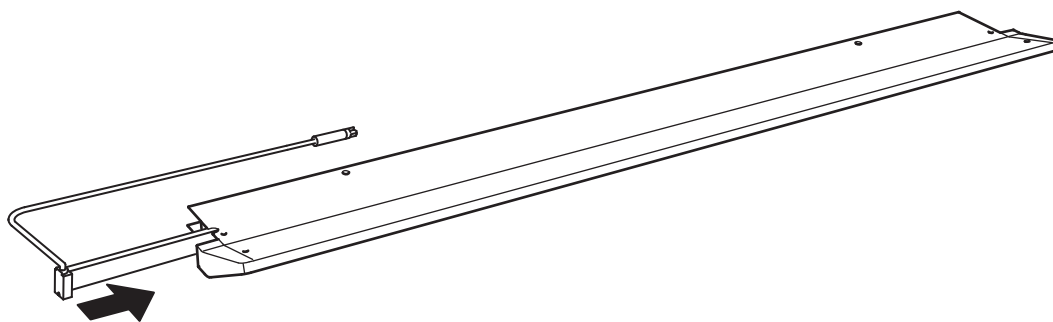
#### עברית

מוצר זה כולל מקור אור בעל דירוג אנרגטי E.

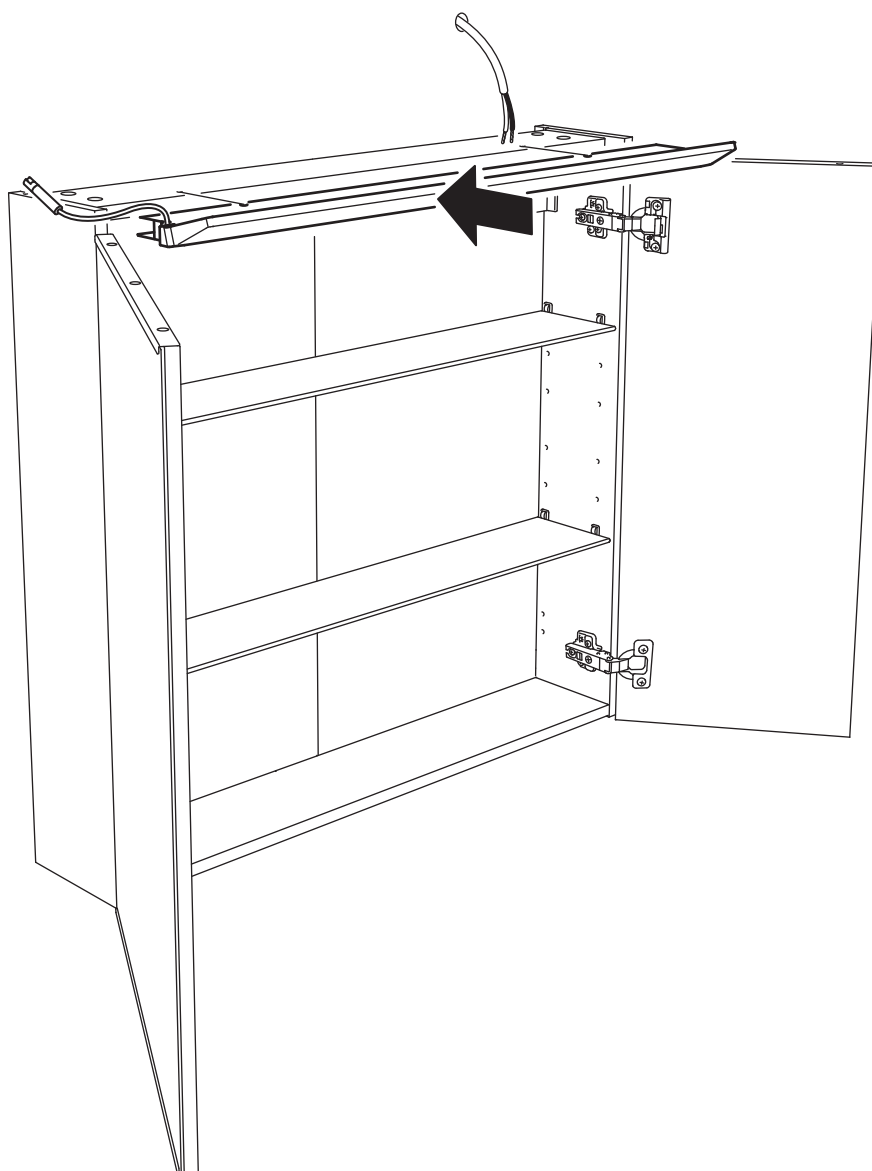




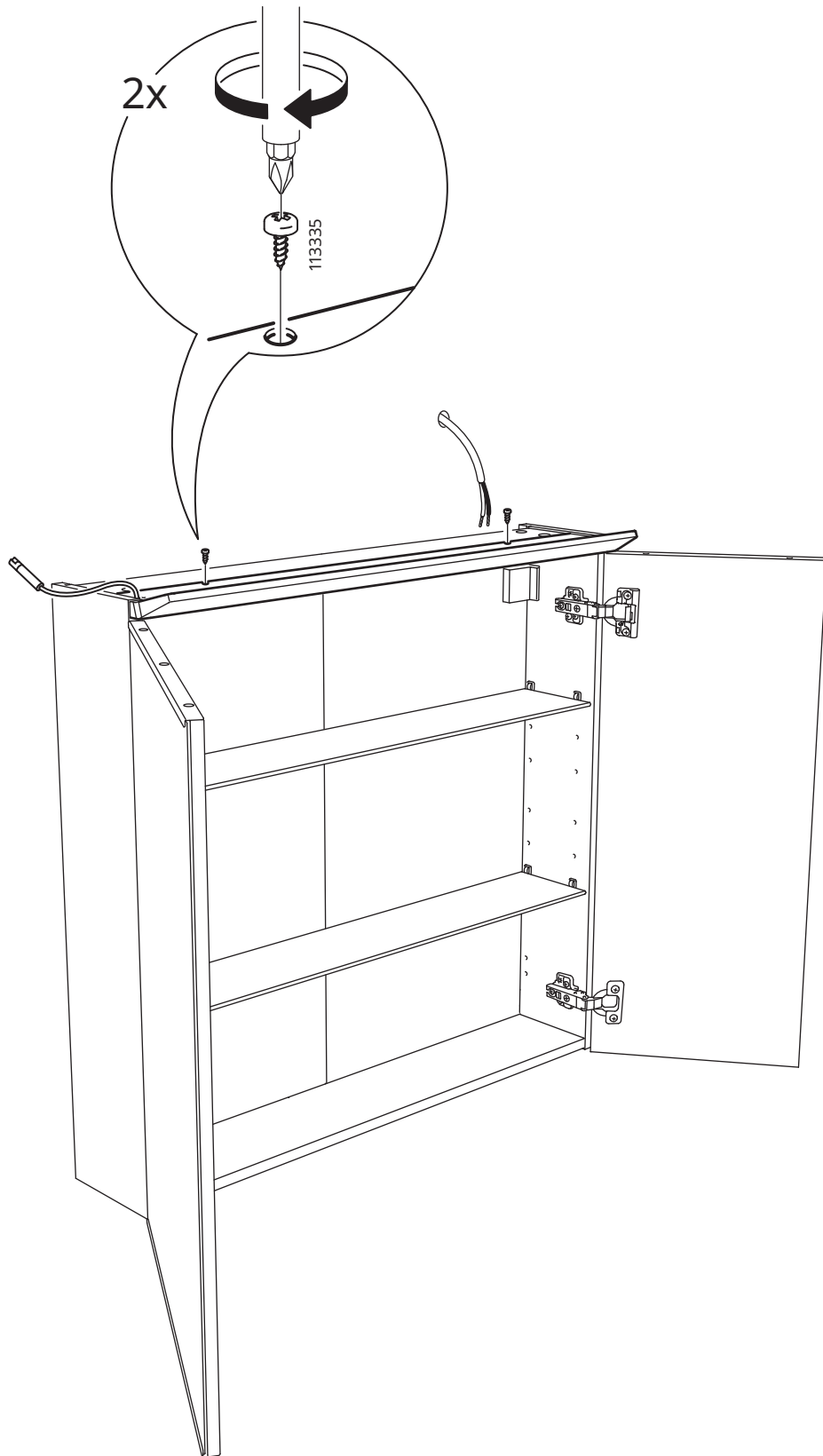
1



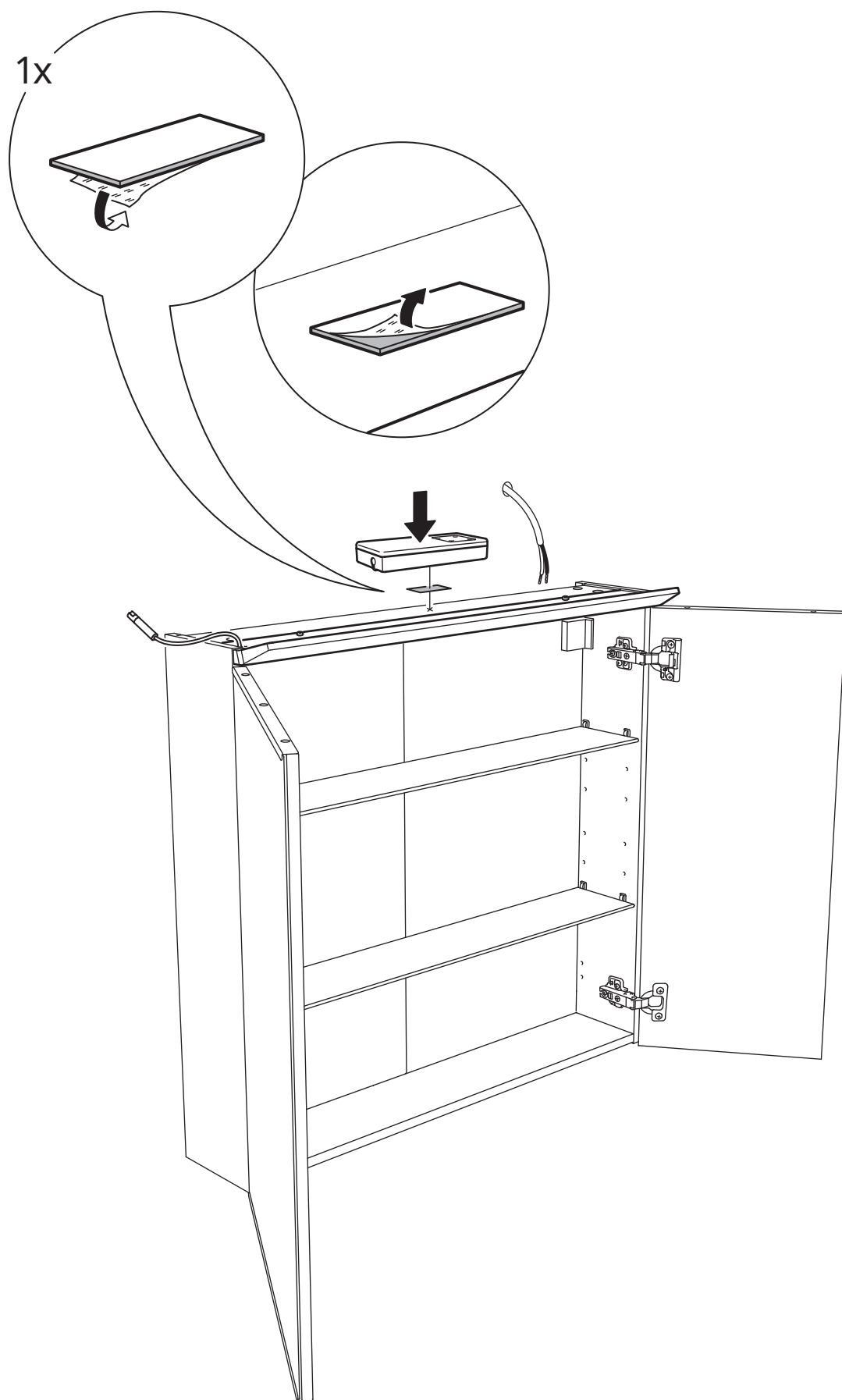
2



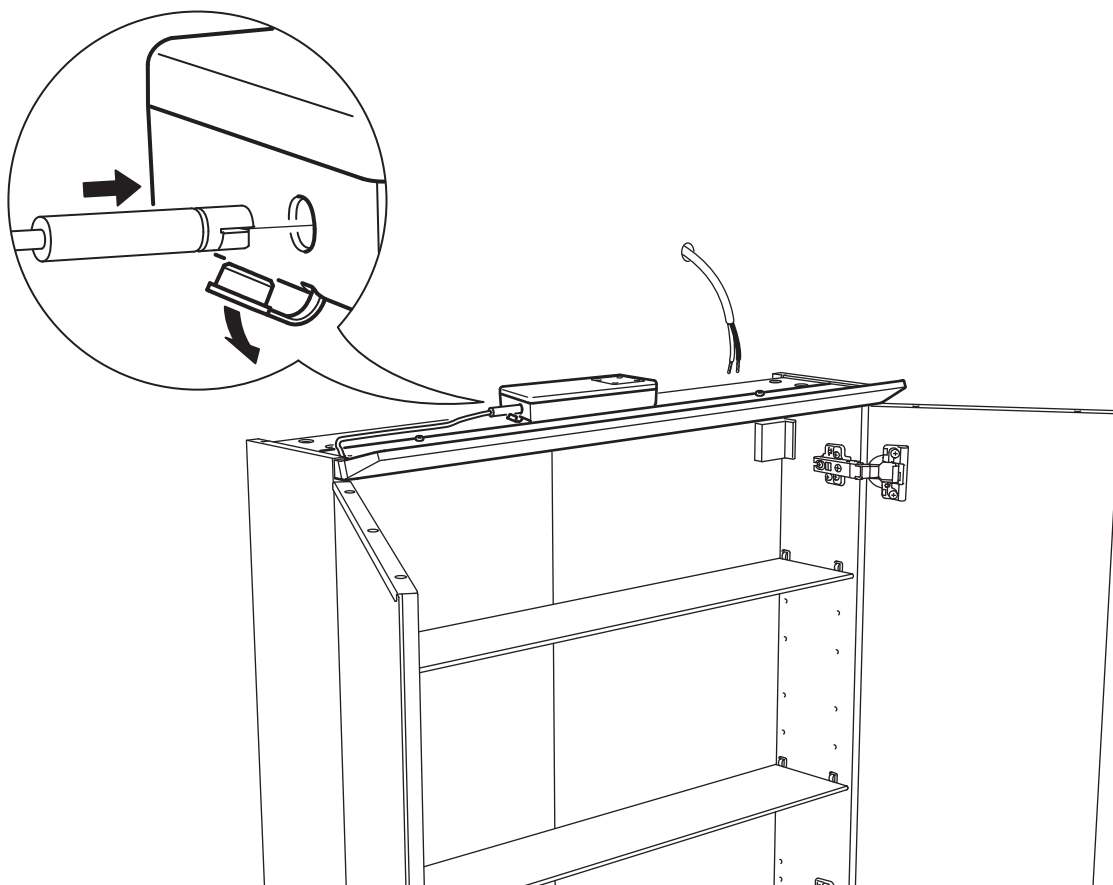
3



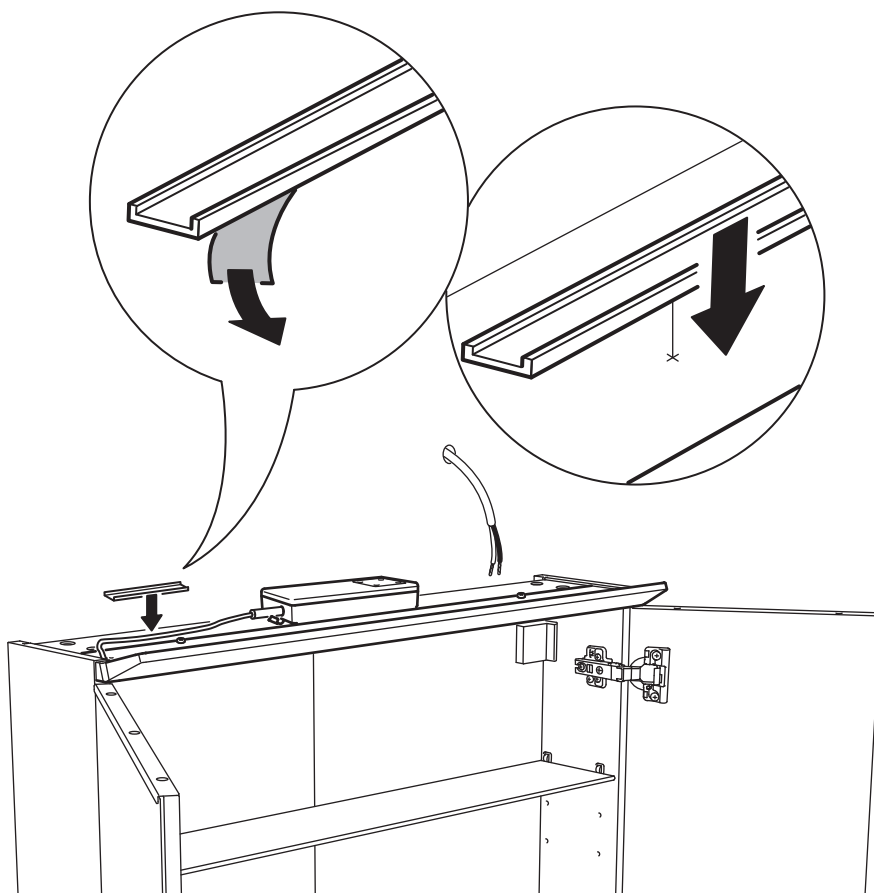
4



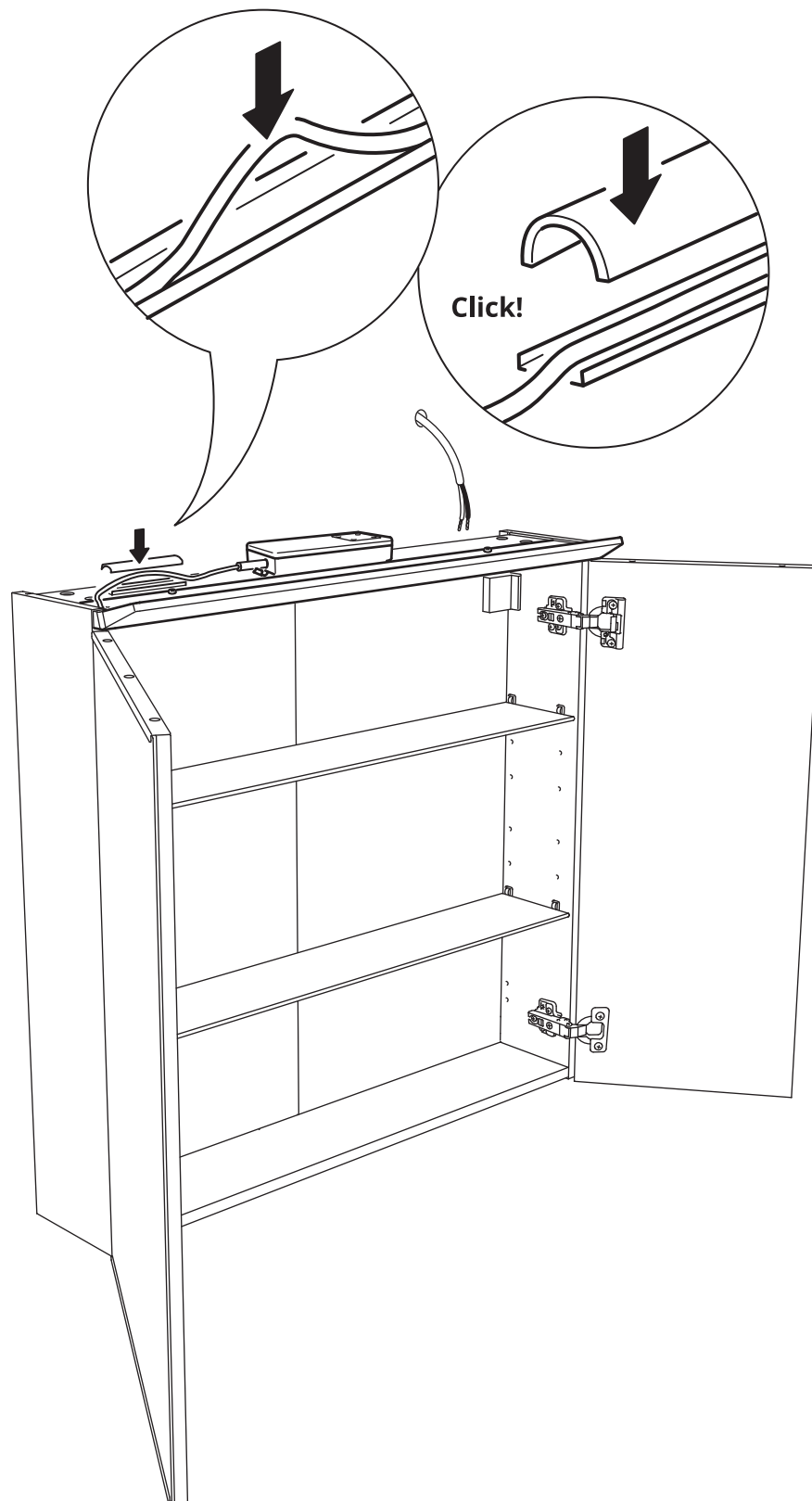
5



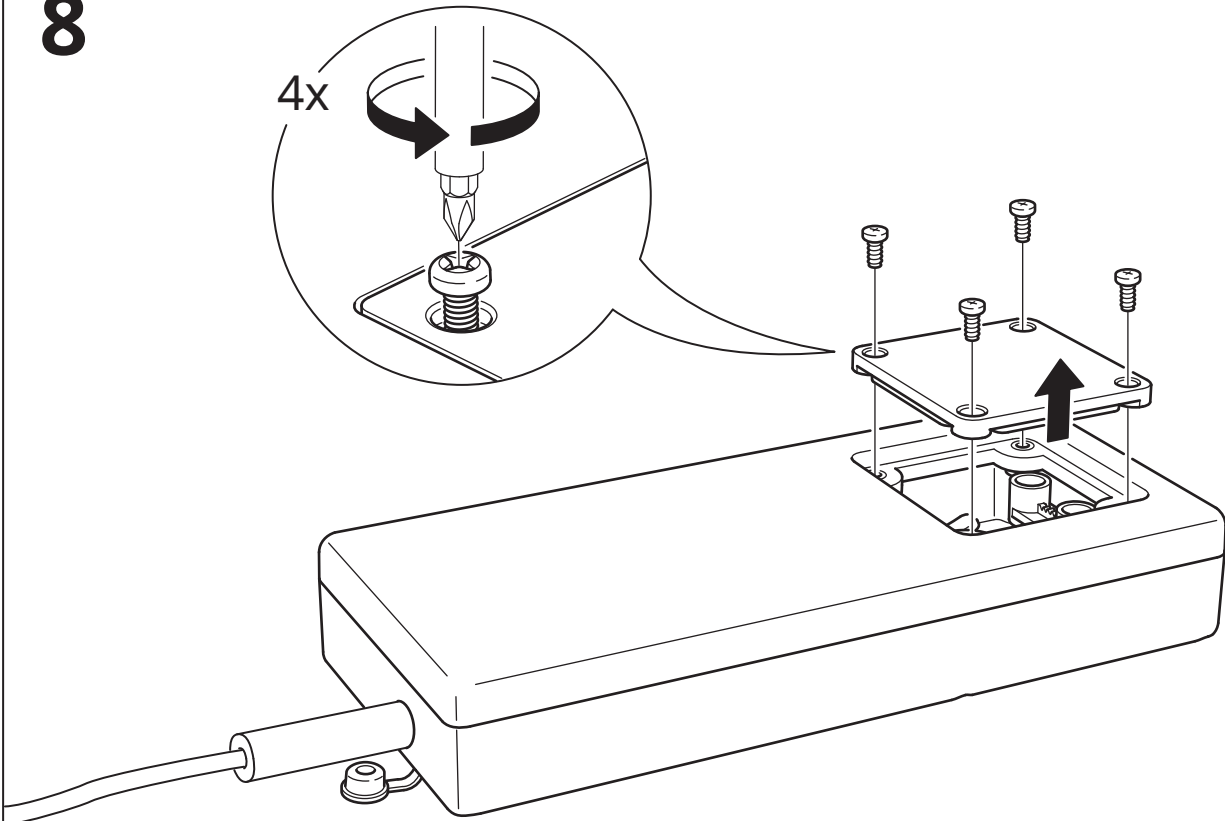
6



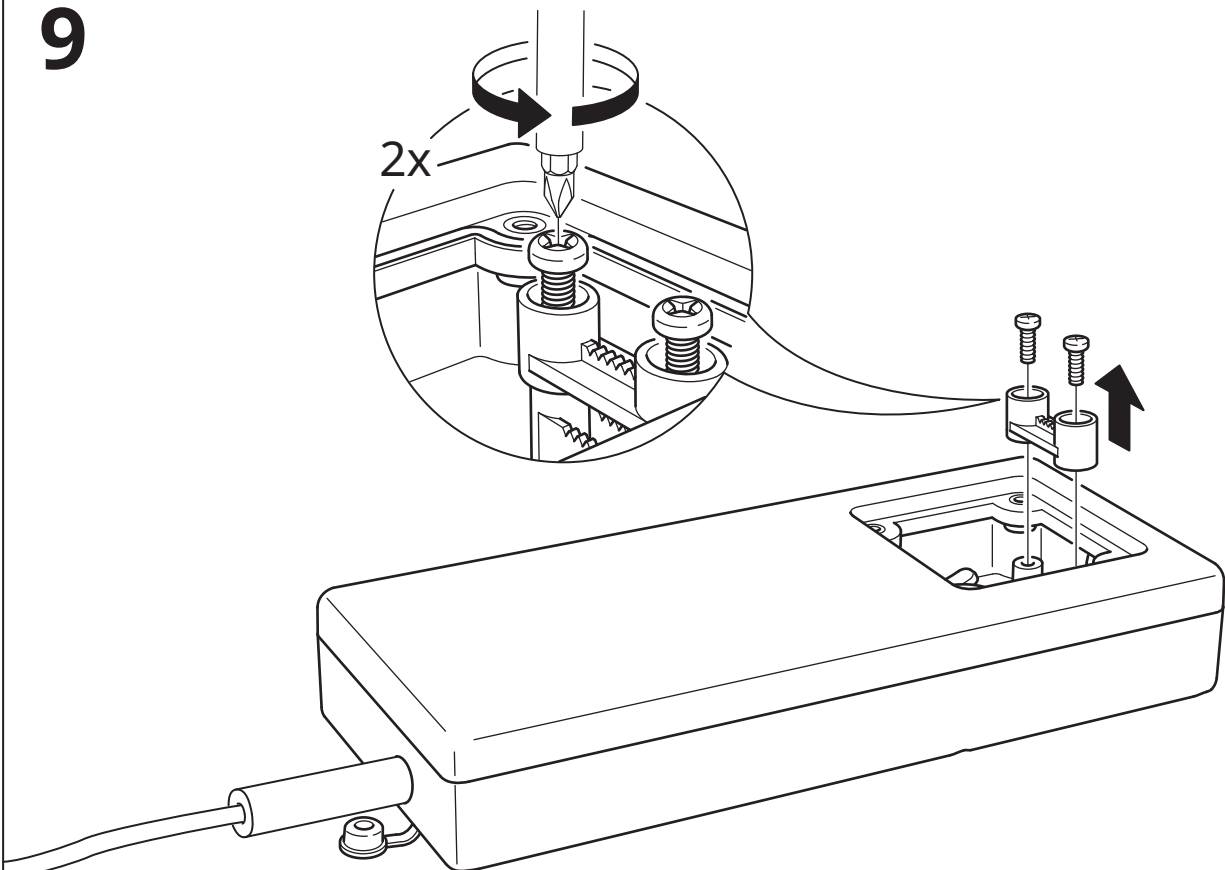
7



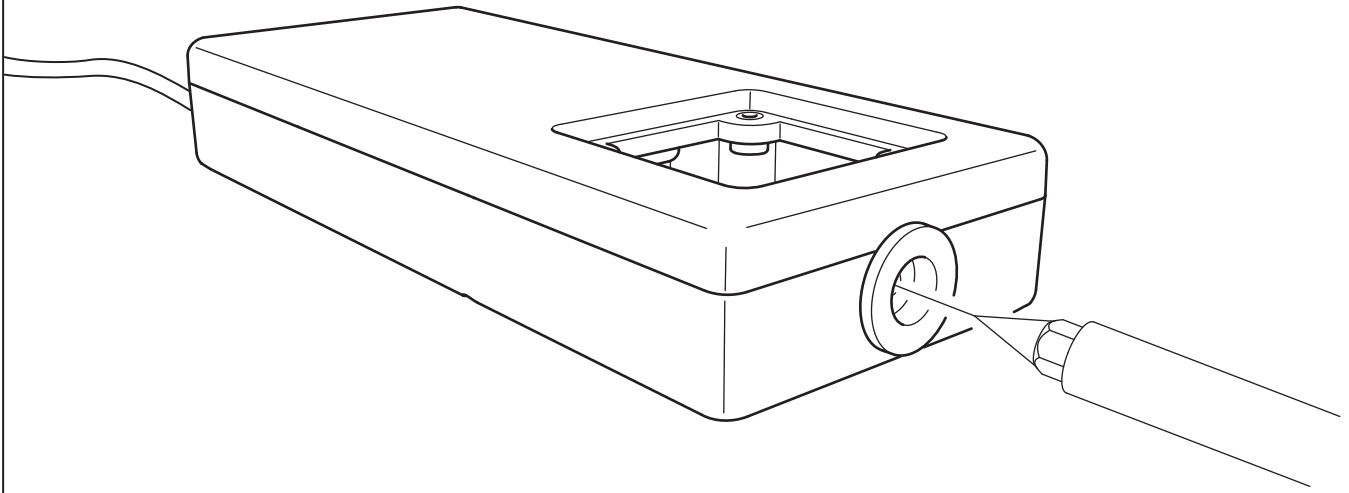
8



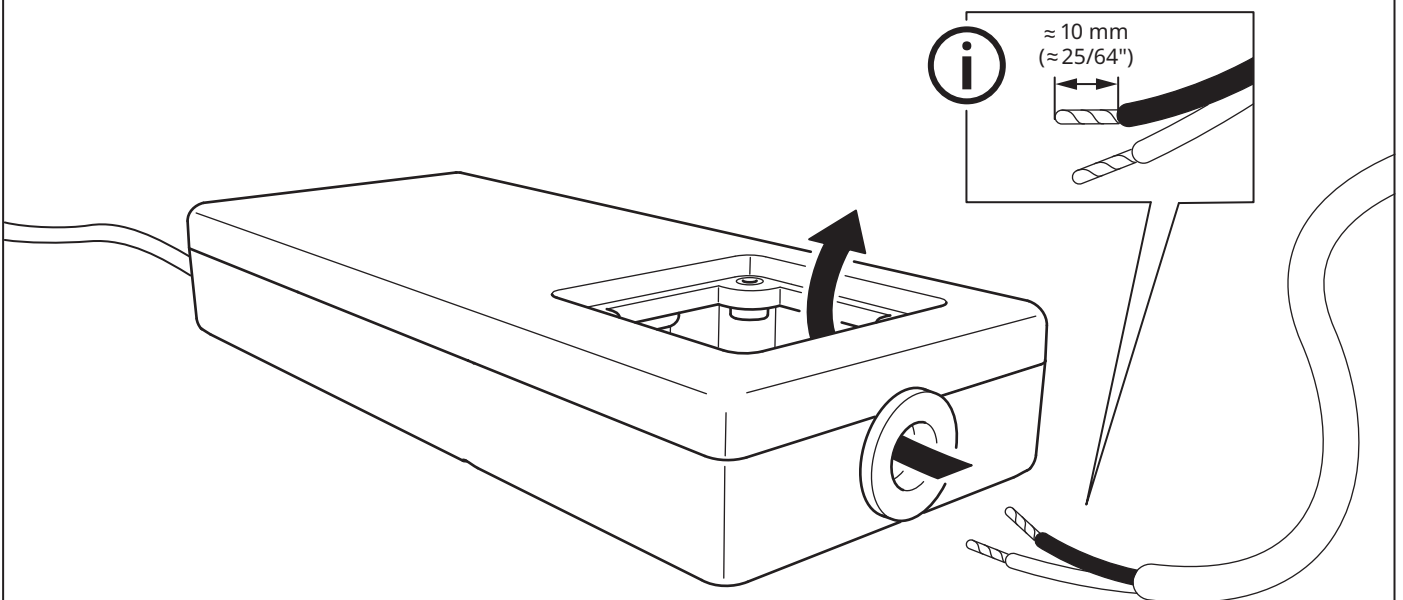
9

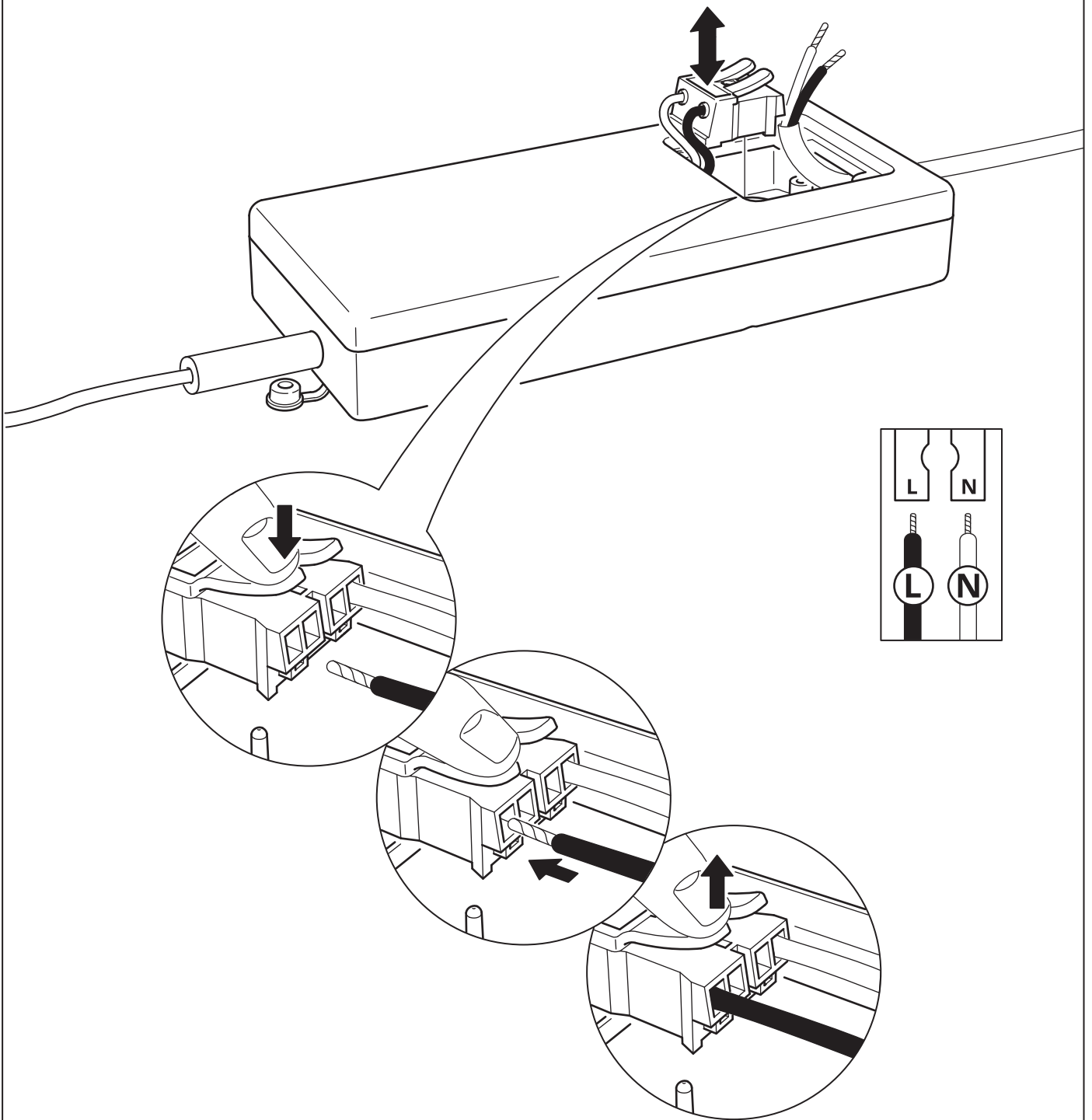


# 10

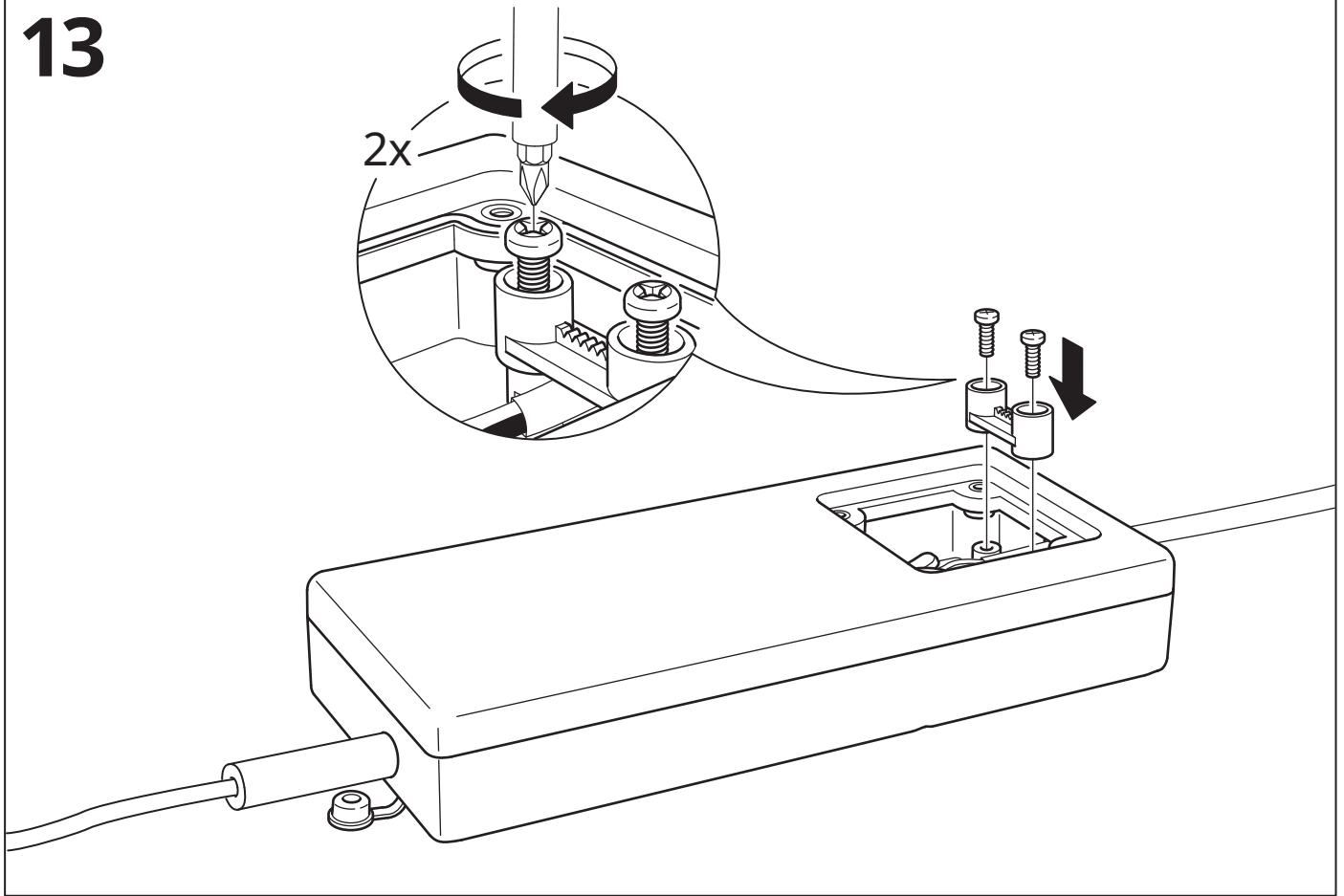


# 11





# 13



# 14

