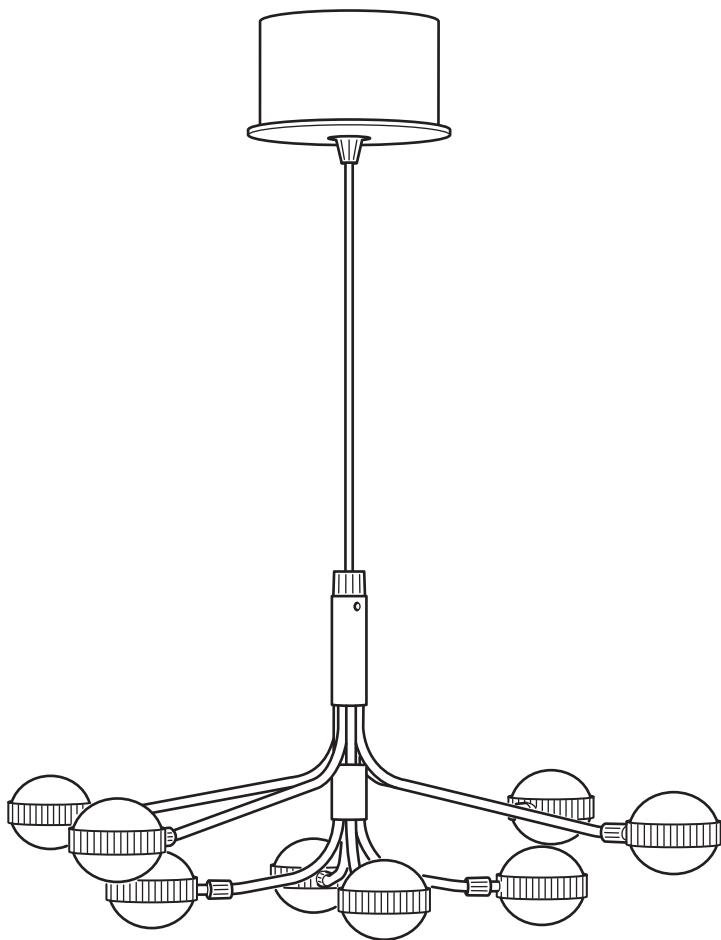


# STORSLINGA



Design and Quality  
IKEA of Sweden

**English****IMPORTANT**

Always shut off power to the circuit before starting installation work. In some countries electrical installation work may only be carried out by a authorised electrical contractor. Contact your local electricity authority for advice.

**English**

The light source contained in this luminaire shall only be replaced by the manufacturer or his service agent or a similar qualified person.

**English**

This product contains a light source of energy efficiency class D.

**עברית****חשוב**

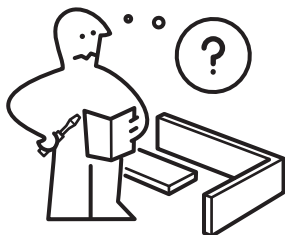
נתקו את זרם החשמל לפני תחילת תהליך ההתקנה. במדינות מסוימות על ההתקנה להתבצע על ידי חשמלאי מוסמך בלבד. מומלץ ליצור קשר עם חברת החשמל ולקבל מידע בנושא זה.

**עברית**

מקור האור במנורה זו יוחלף אך ורק על ידי היצרן או איש שירות מטעמו או אדם מוסמך.

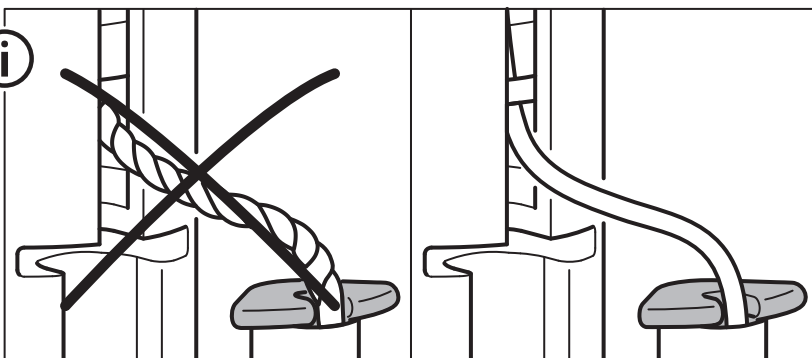
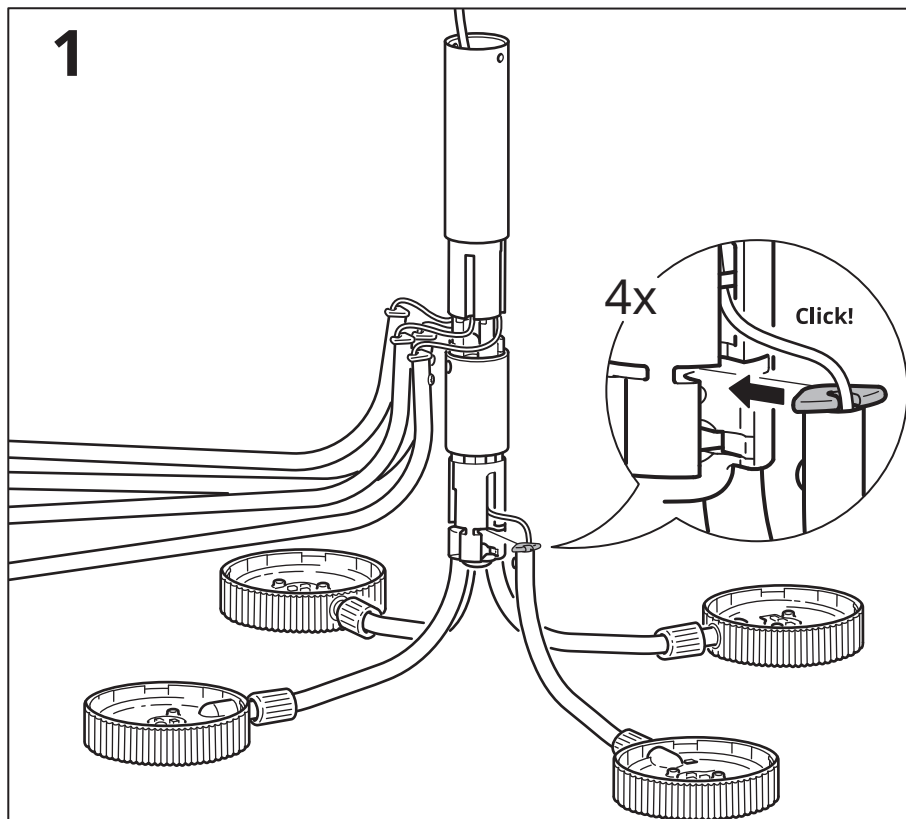
**עברית**

מוצר זה כולל מקור אור בעל דירוג אנרגטי D.

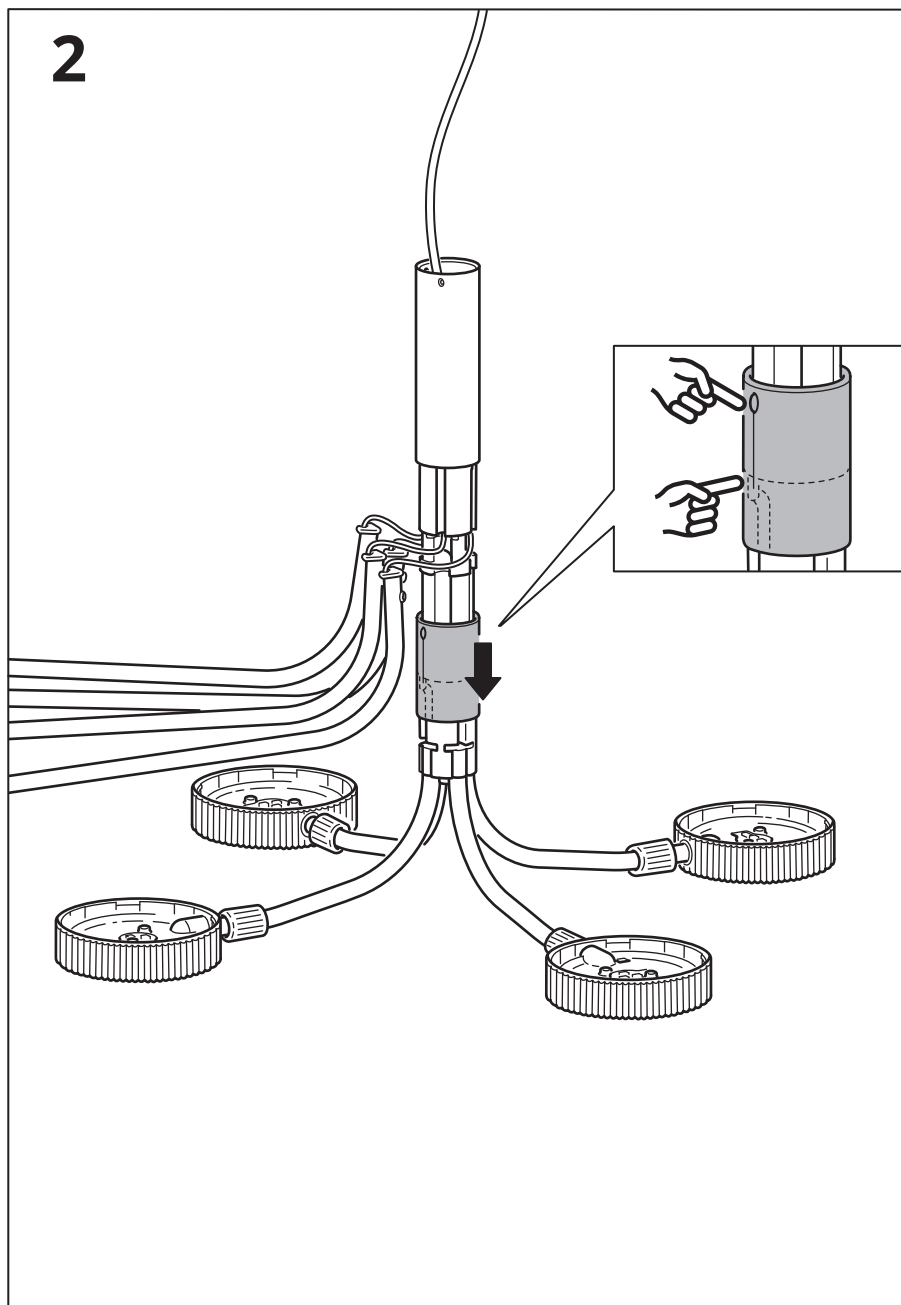


16x

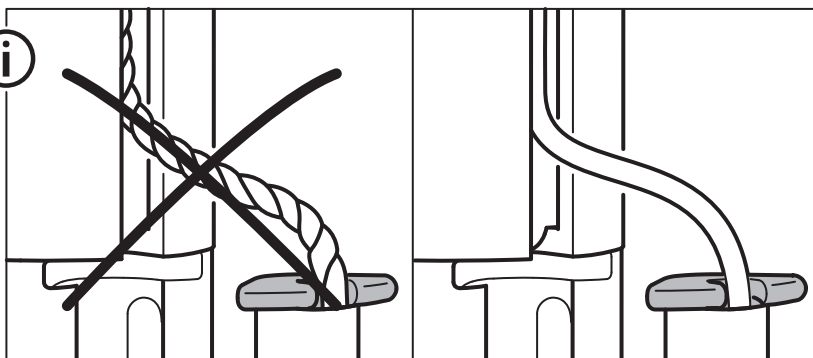
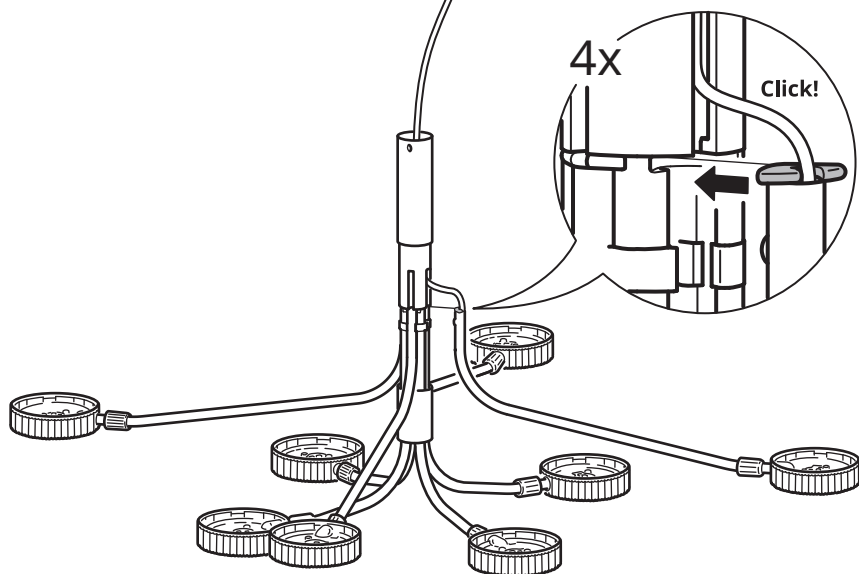
1



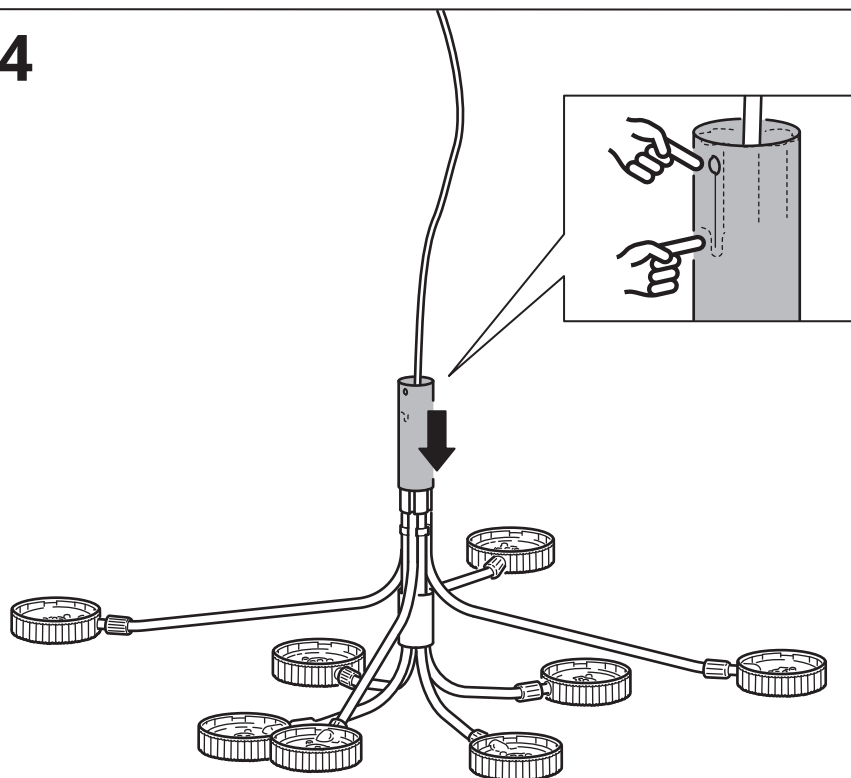
2



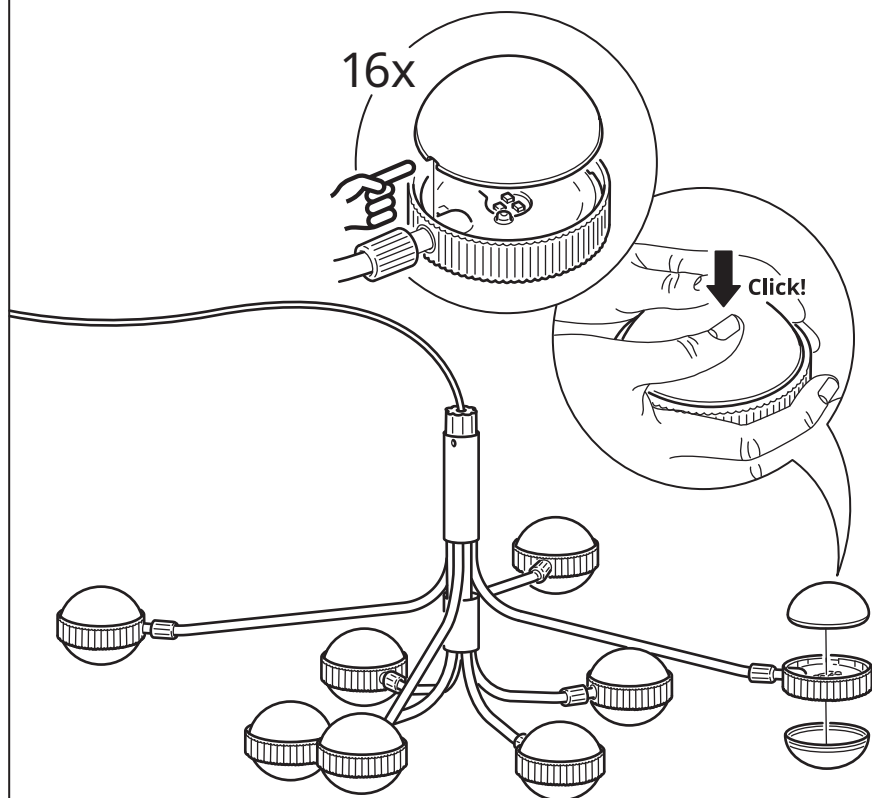
3



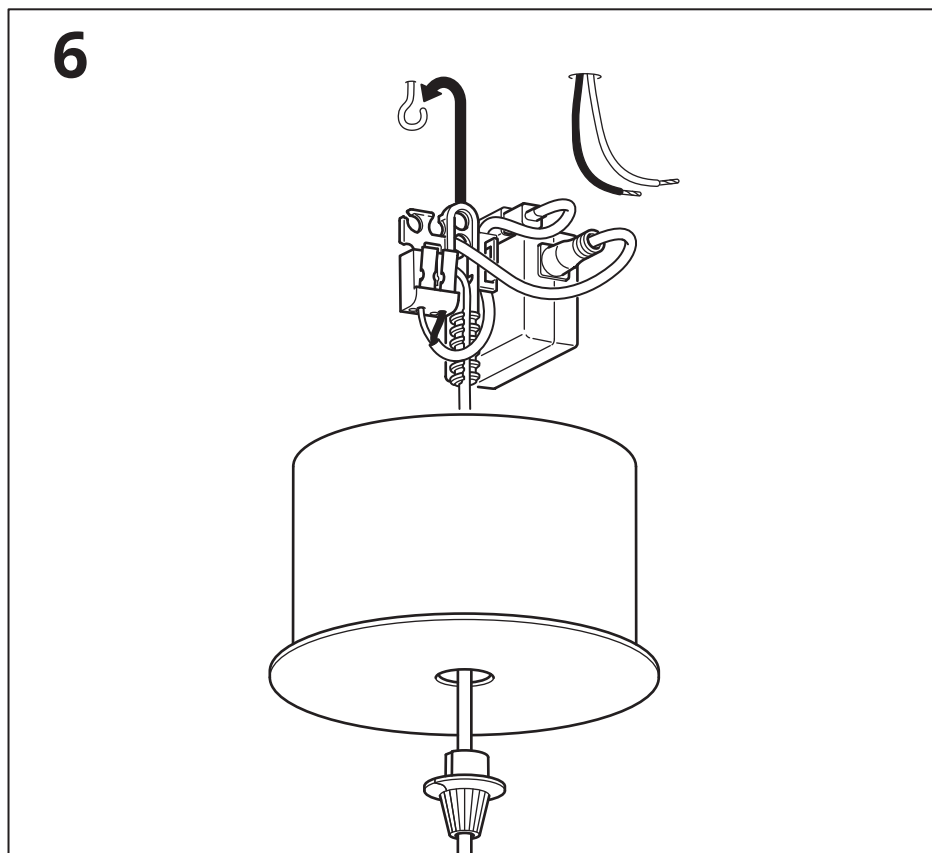
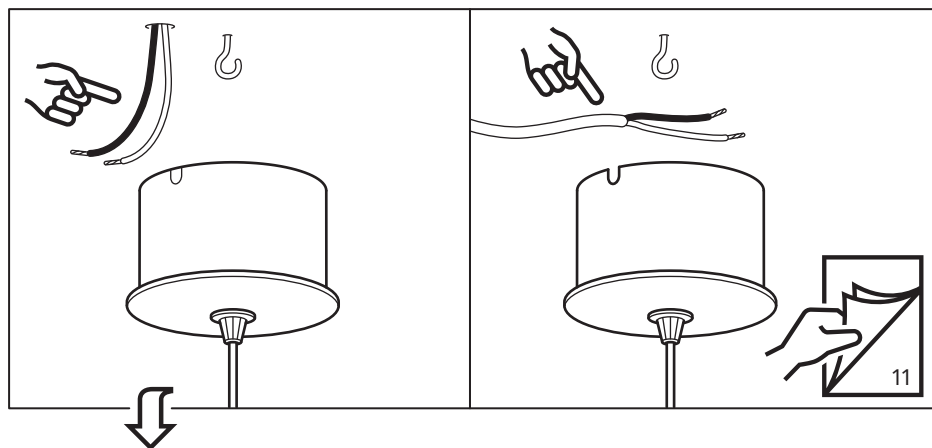
4



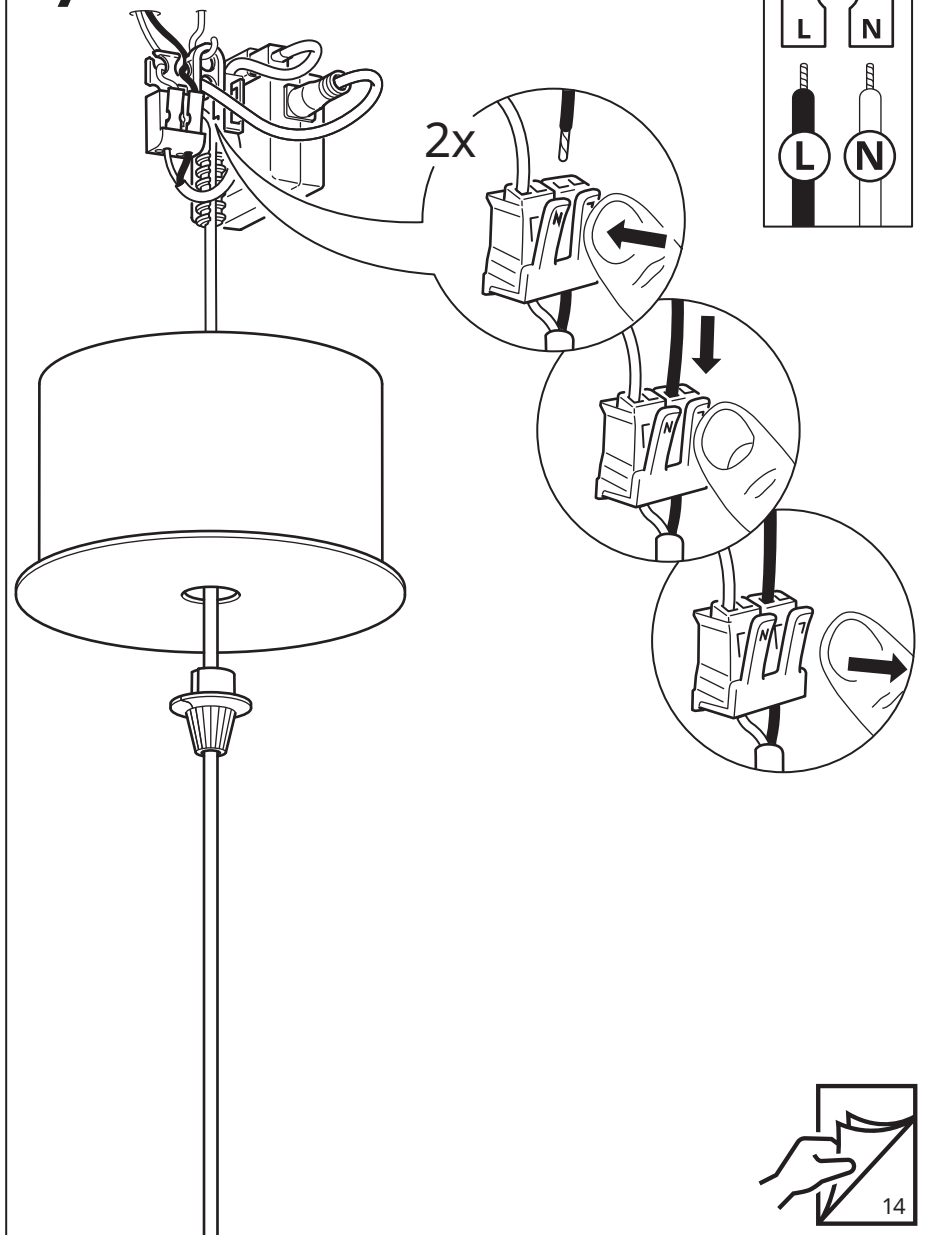
5

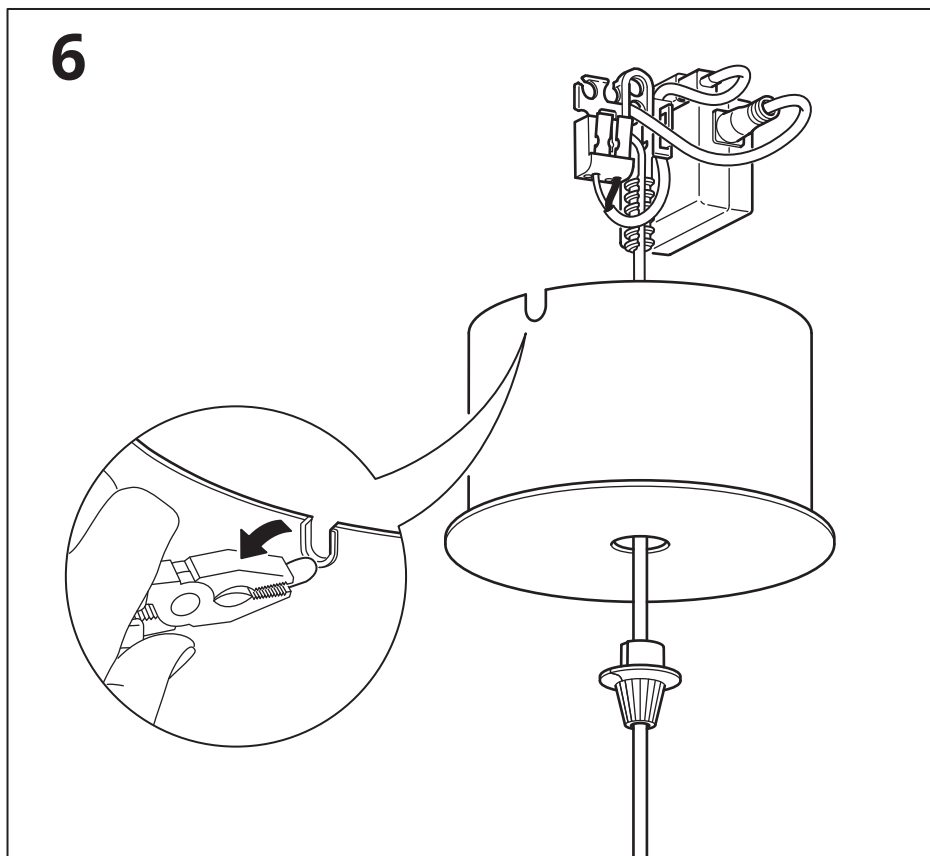
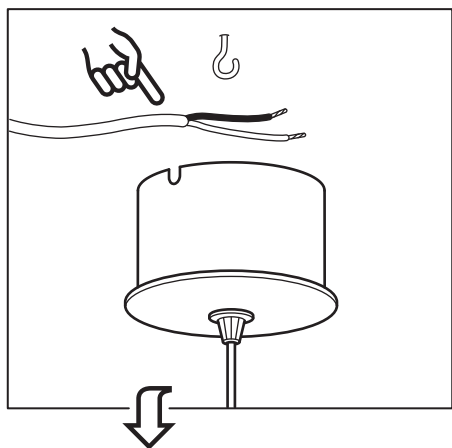




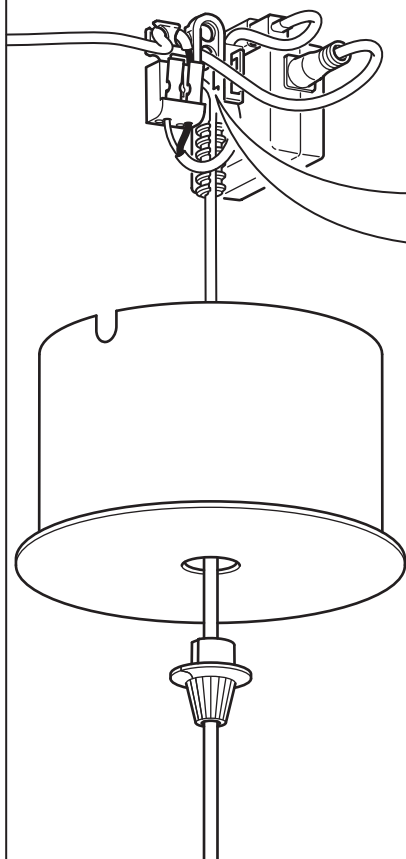
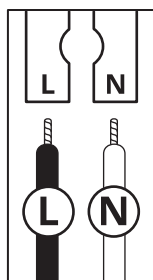
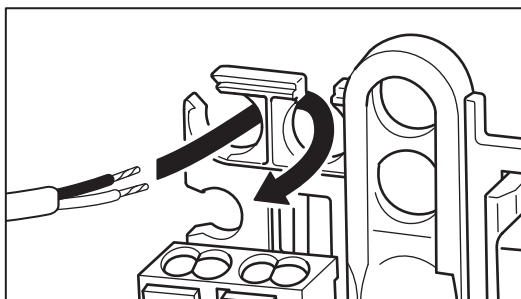


7

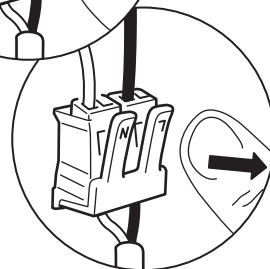
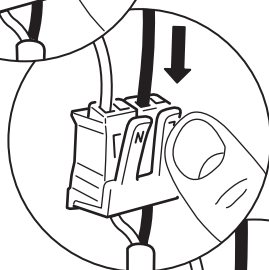
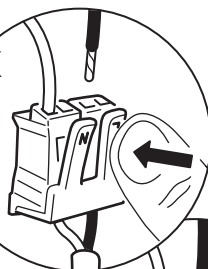




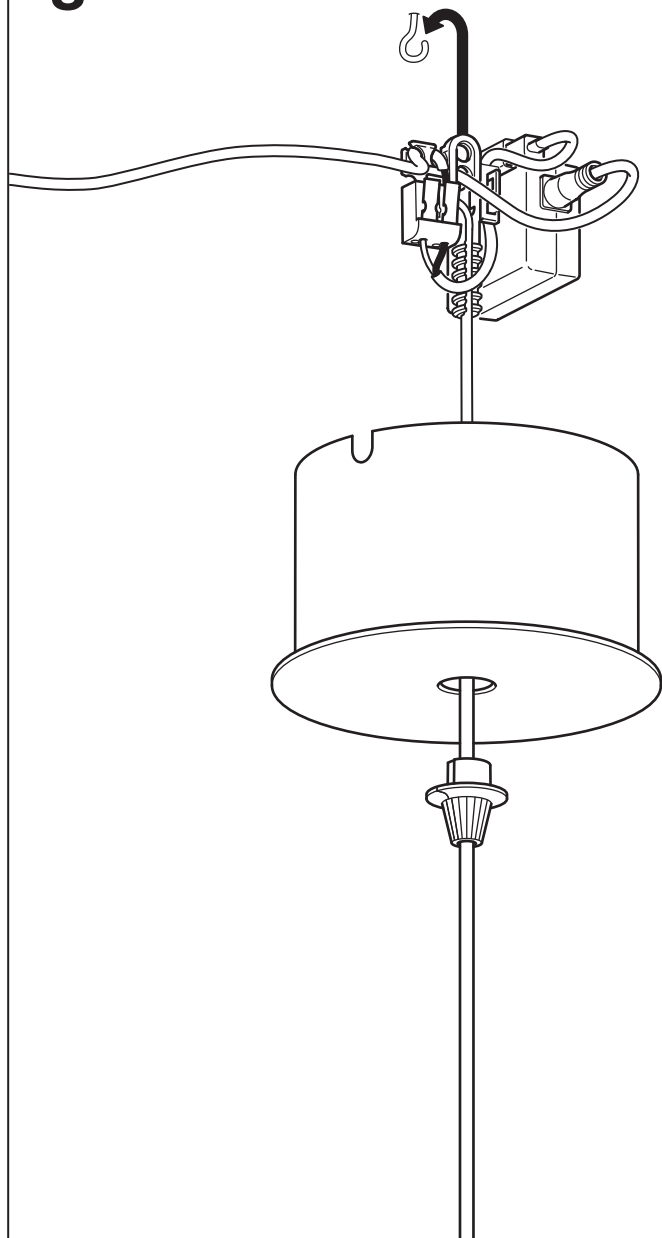
7

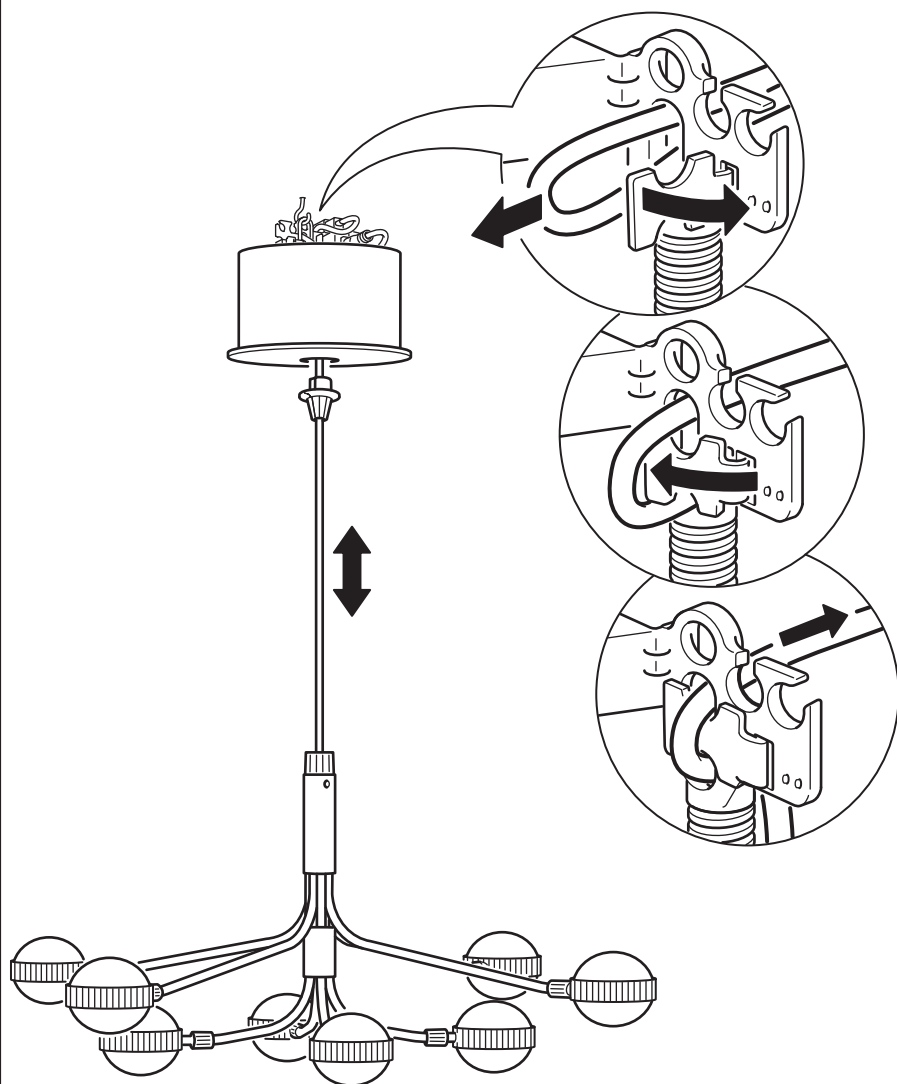


2x

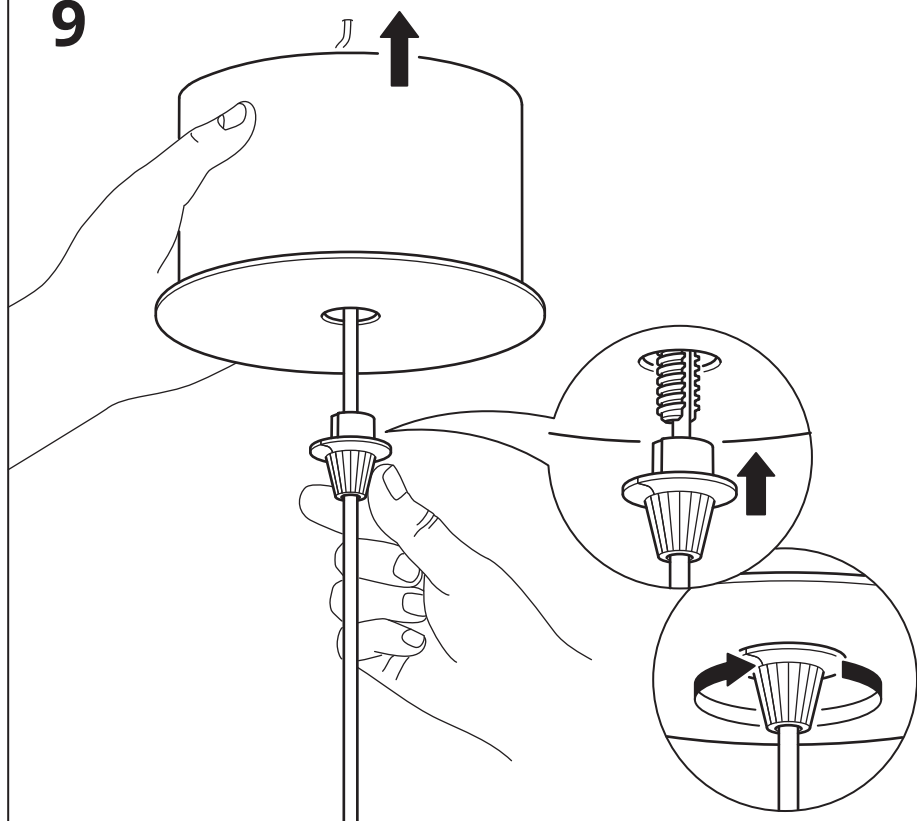


8





9



**English**

CAUTION! Do not overtighten.

**עברית**

אזהרה! יש להימנע מהידוק יתר.

