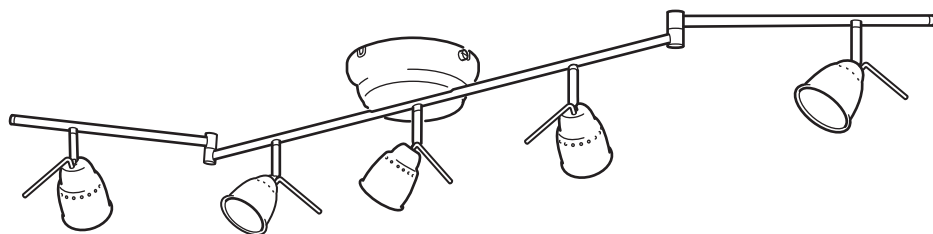


BAROMETER



Design and Quality
IKEA of Sweden



English

IMPORTANT!

Always shut off power to the circuit before starting installation work. In some countries electrical installation work may only be carried out by a authorised electrical contractor. Contact your local electricity authority for advice. Different materials require different types of fittings. Always choose screws and plugs that are specially suited to the material.

עברית

חשוב!

נתקו את זרם החשמל לפני תחילת תהליך ההתקנה. במדינות מסוימות על ההתקנה להתבצע על ידי חשמלאי מוסמך בלבד. חומרי קיר שונים מצריכים אבזרי חיבור שונים. בחרו את הברגים והדיבלים המתאימים לחומר ממנו עשוי הקיר בביתכם.

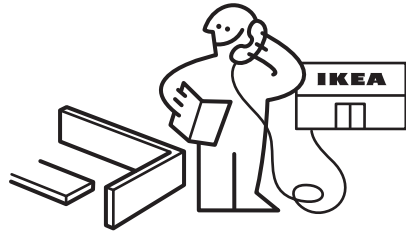
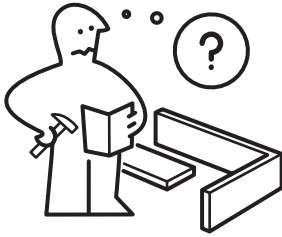


English

Minimum safe distance to illuminated object: 0.5 metre. The lamp can cause fire if the minimum distance is not kept.

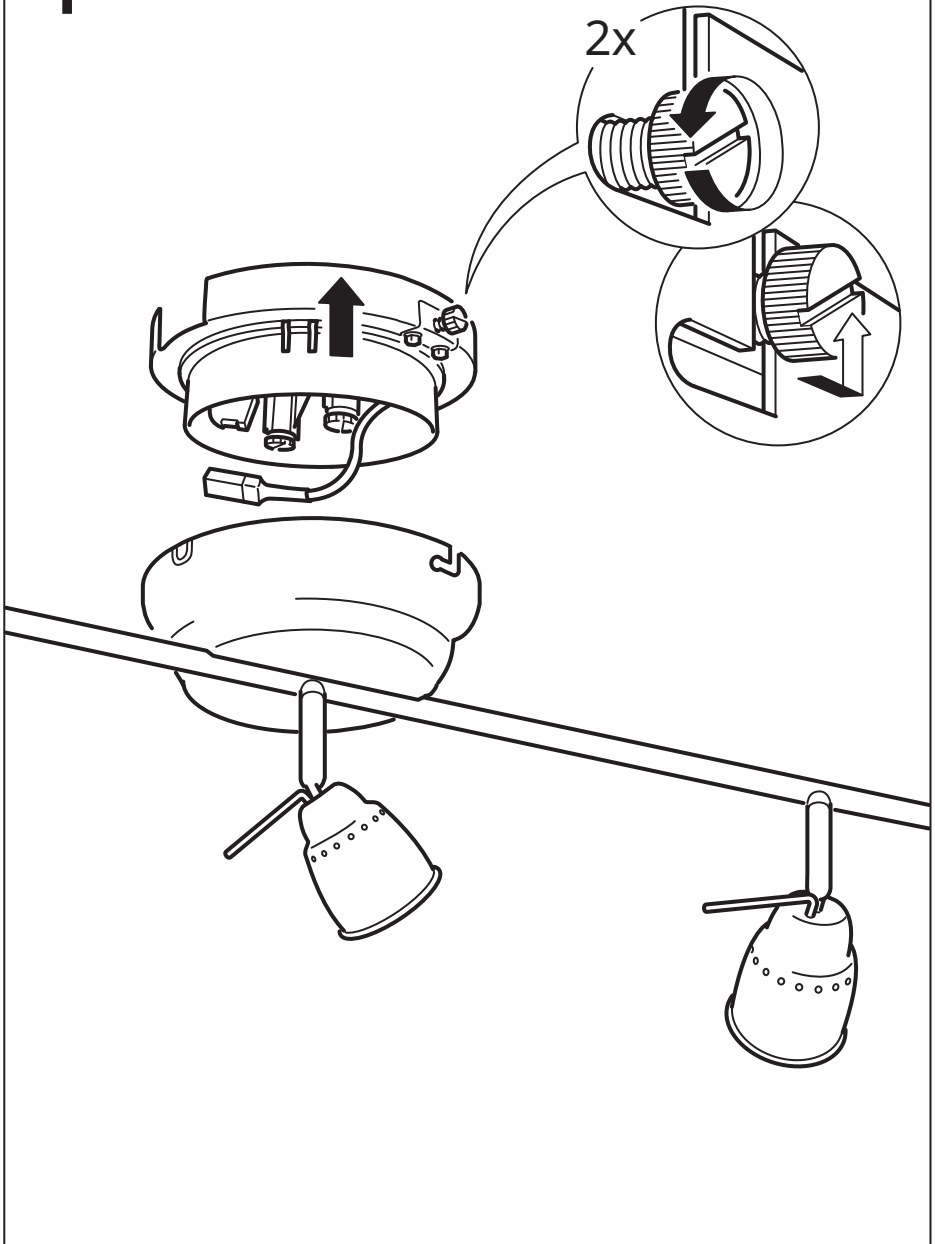
עברית

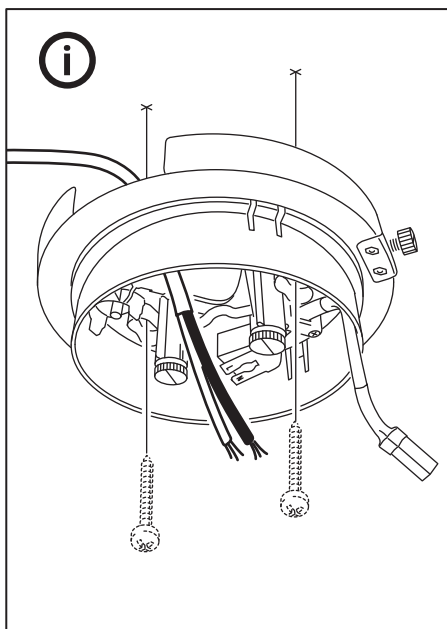
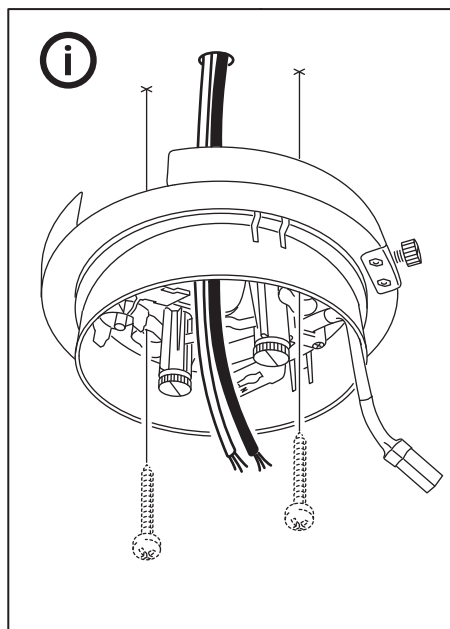
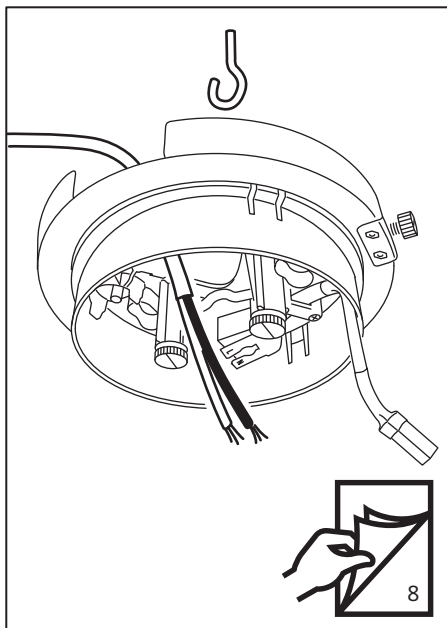
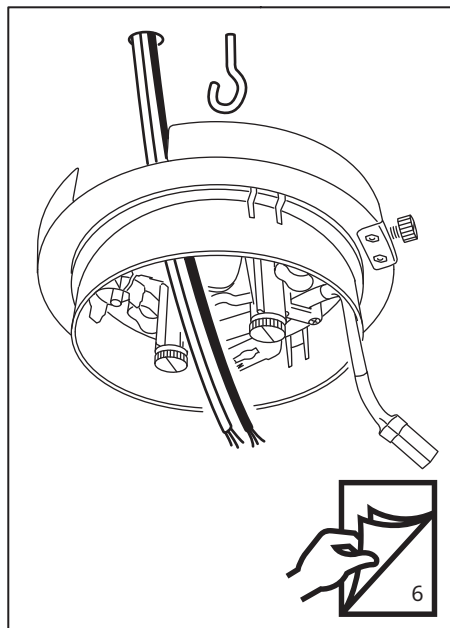
מרחק בטיחות מינימלי מהחפץ המואר: 0.5 מטר. המנורה עלולה לגרום לשריפה במידה והמרחק המינימלי לא יישמר.



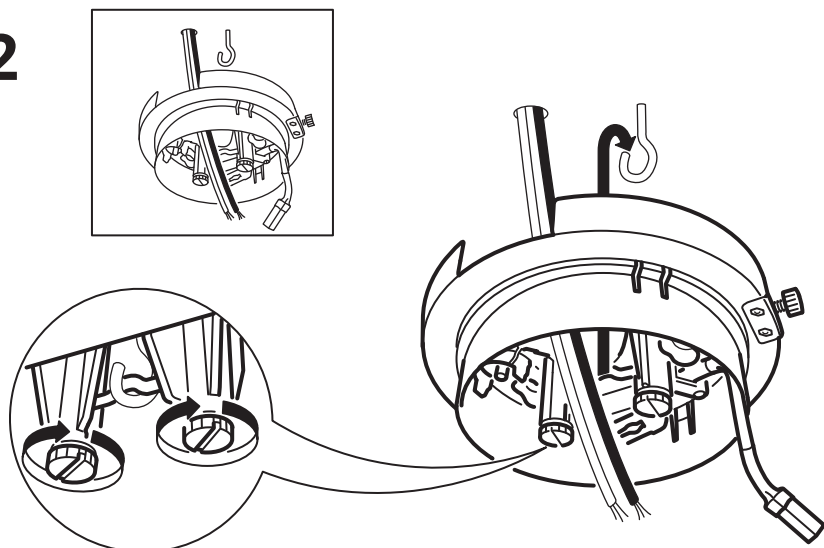
1x

1

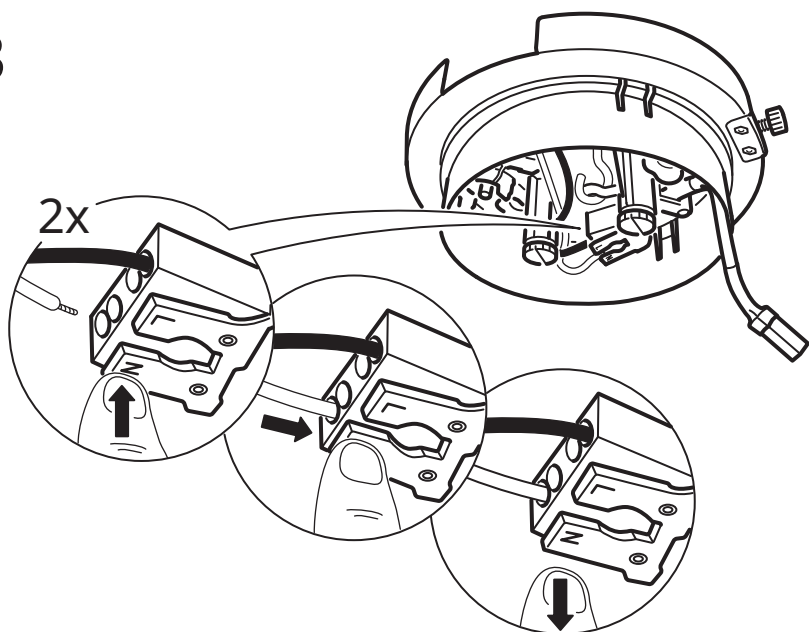




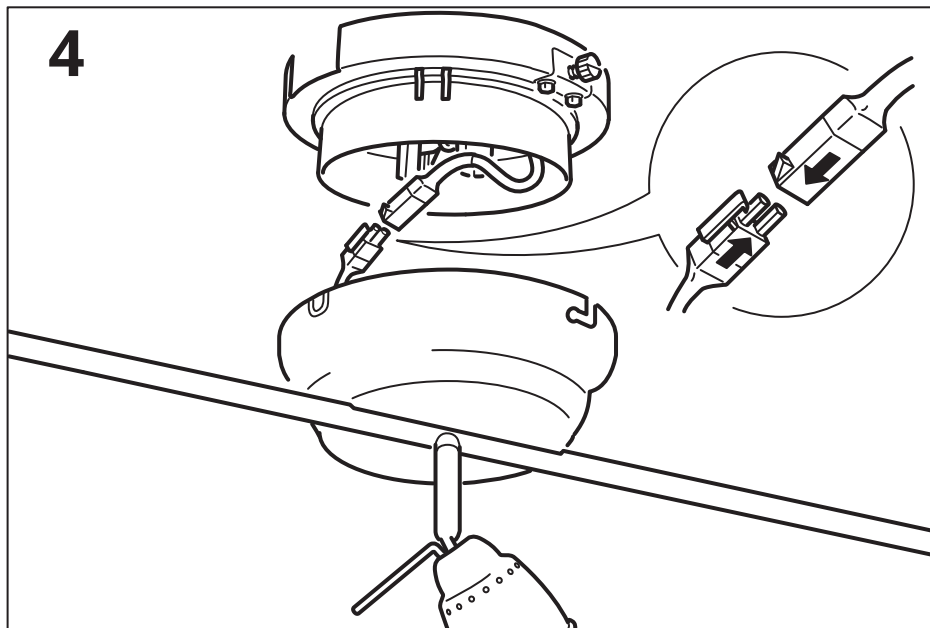
2



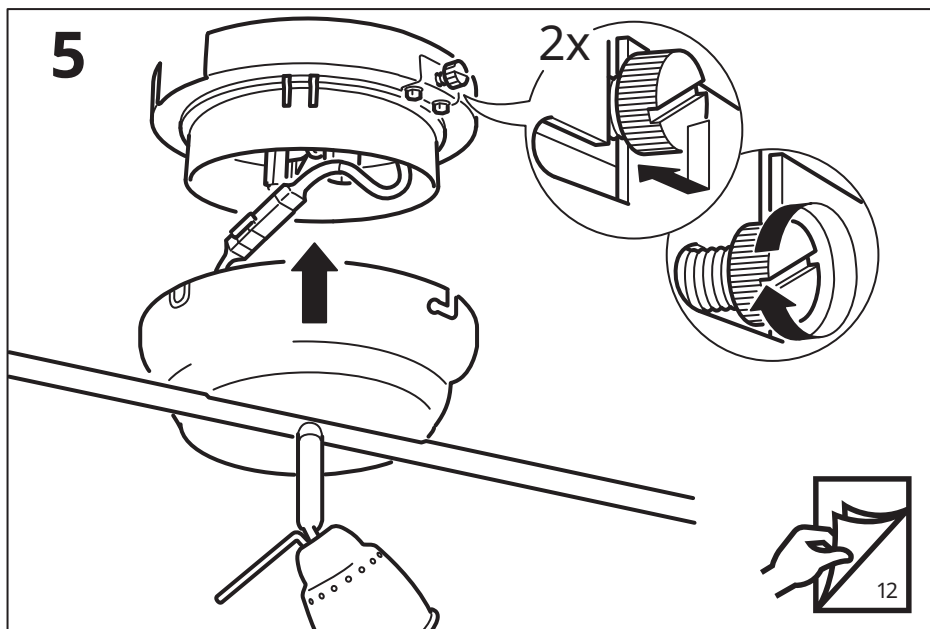
3



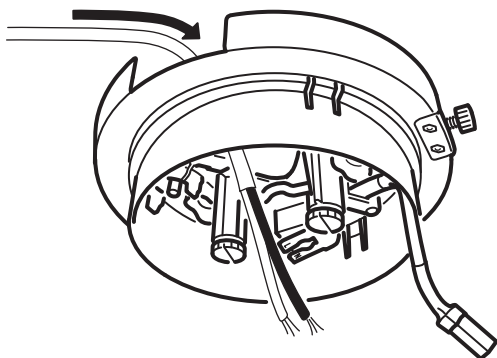
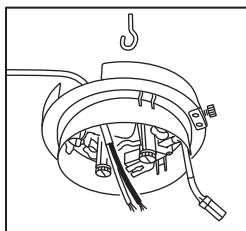
4



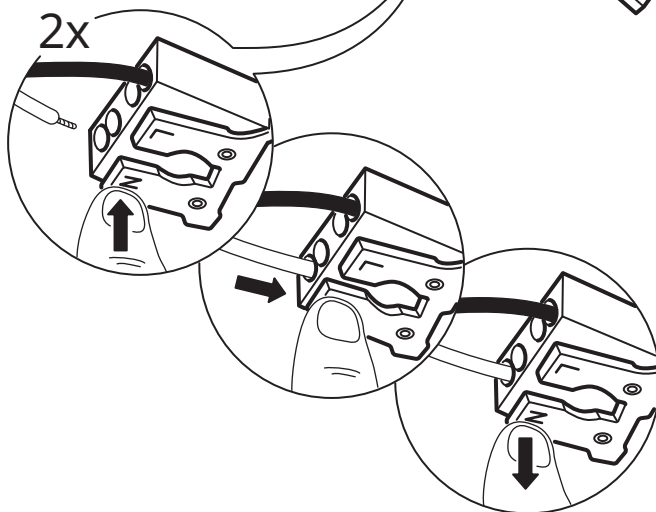
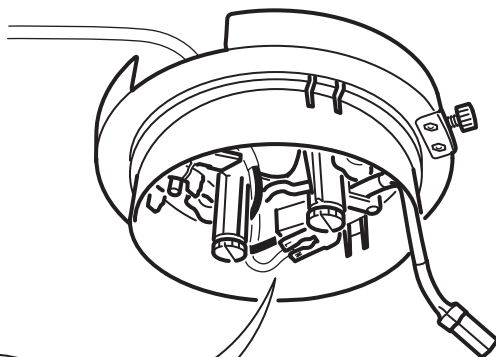
5



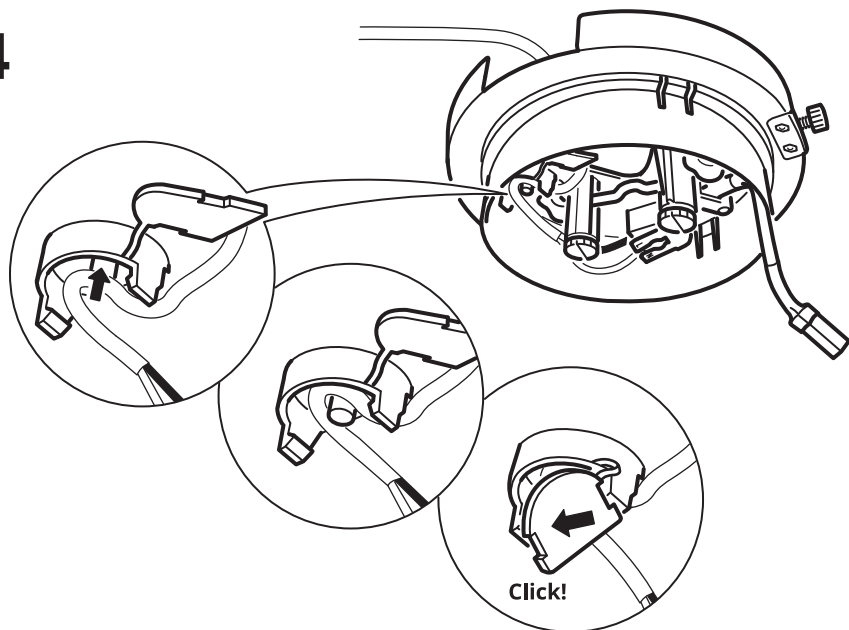
2



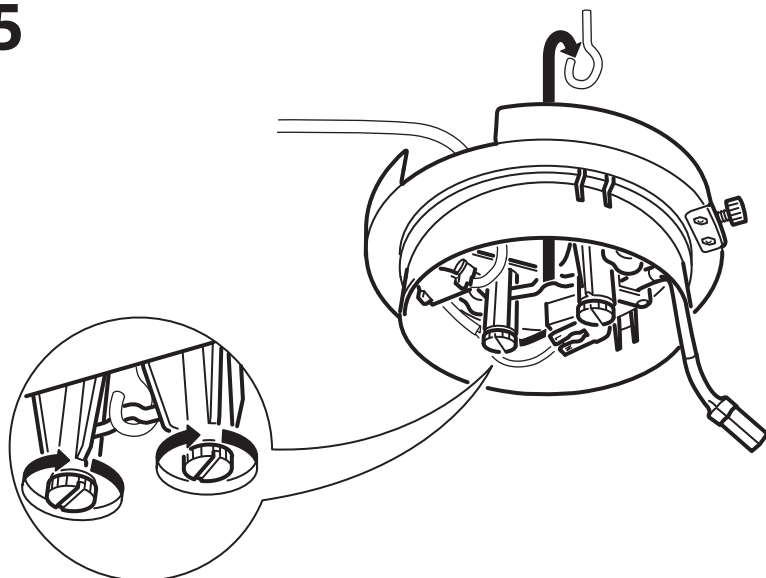
3



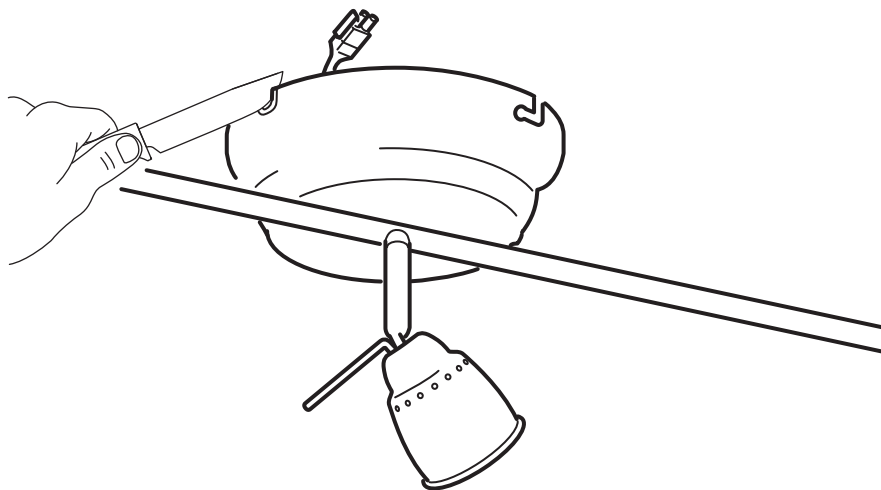
4



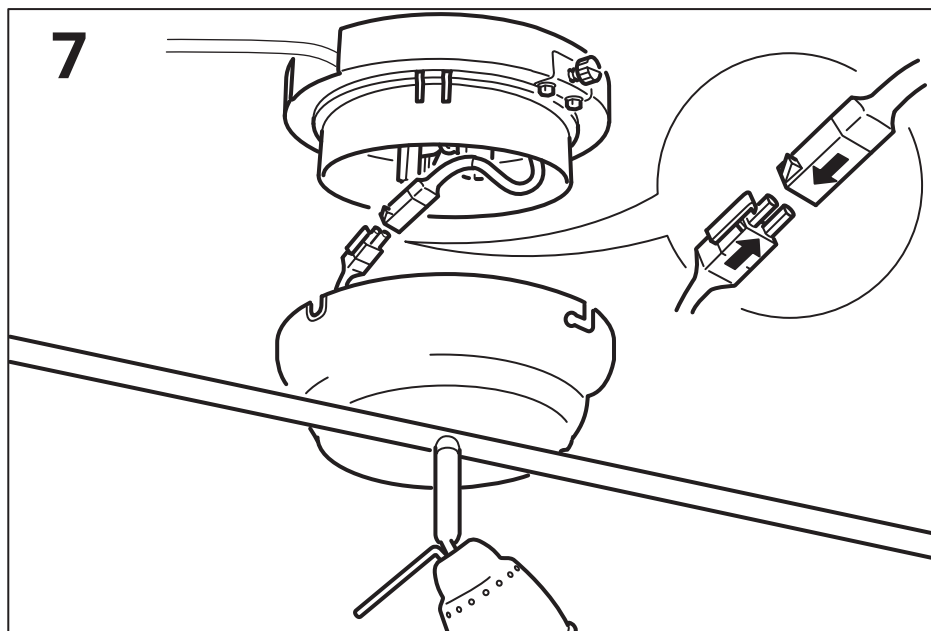
5



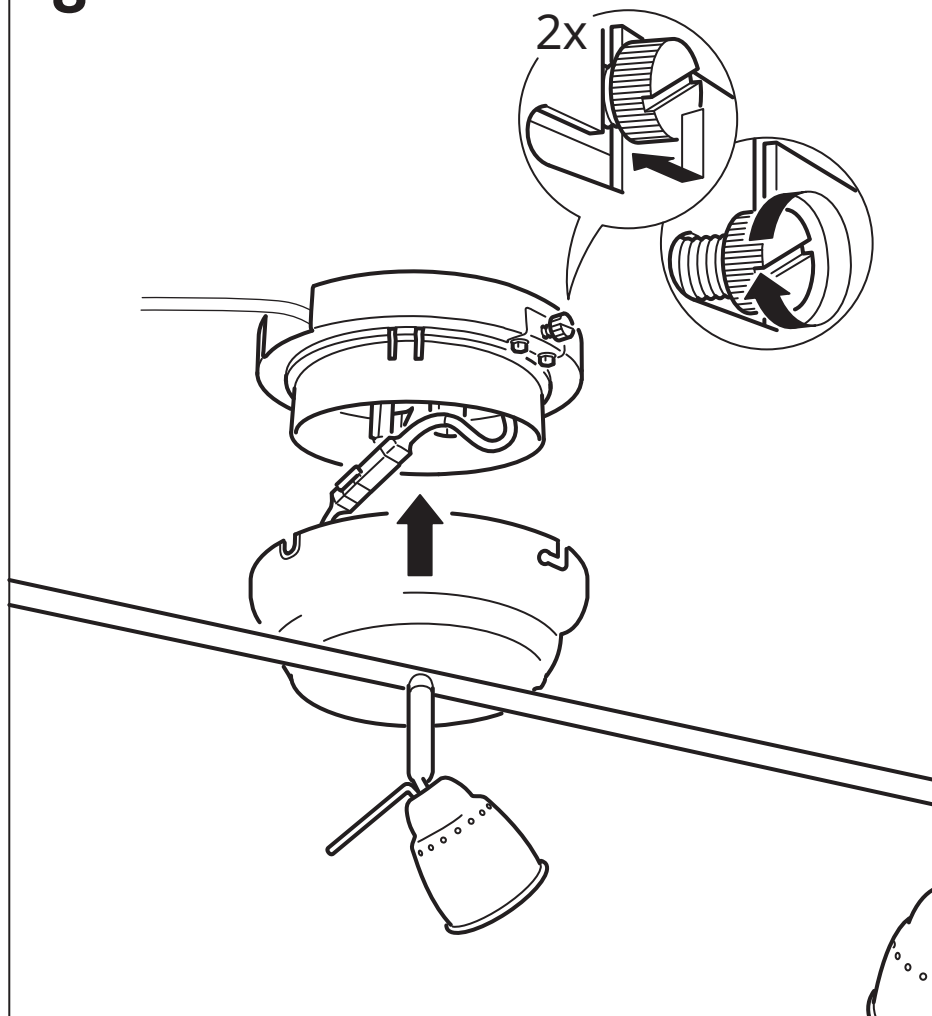
6

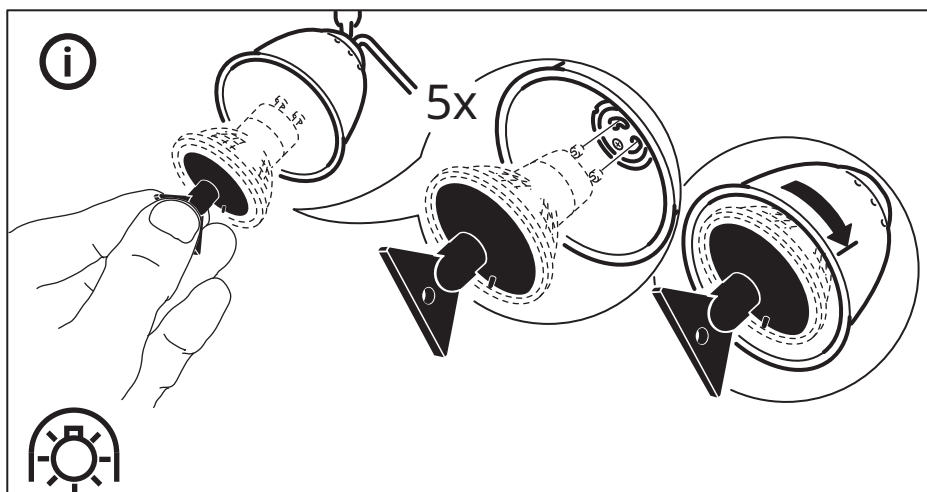


7



8





English

WHEN CHANGING BULBS - Make sure the new lamp is marked with the symbol above. Bulbs get very hot. Allow the lamp to cool before changing bulbs.

עברית

בזמן החלפת הנורות וודאו כי הנורות החדשות מסומנות בסמל הנראה למעלה. נורות יכולות להתחמם מאוד. הניחו למנורה להתקרר לפני החלפת הנורות.