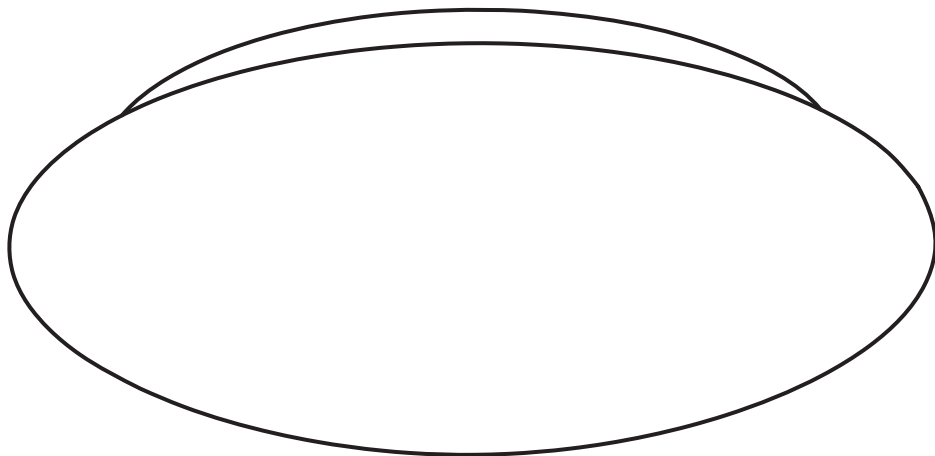


# BARLAST



Design and Quality  
IKEA of Sweden



### English

#### IMPORTANT!

Always shut off power to the circuit before starting installation work. In some countries electrical installation work may only be carried out by a authorised electrical contractor. Contact your local electricity authority for advice.

#### INSTALLATION IN BATHROOMS

The installation shall be carried out by an authorised electrical contractor. The luminaire must be permanently installed in the electric system and placed in the correct zone.

### English

The light source contained in this luminaire shall only be replaced by the manufacturer or his service agent or a similar qualified person.

### עברית

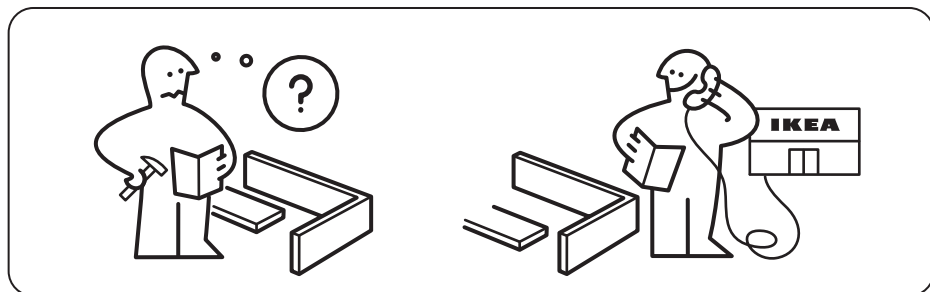
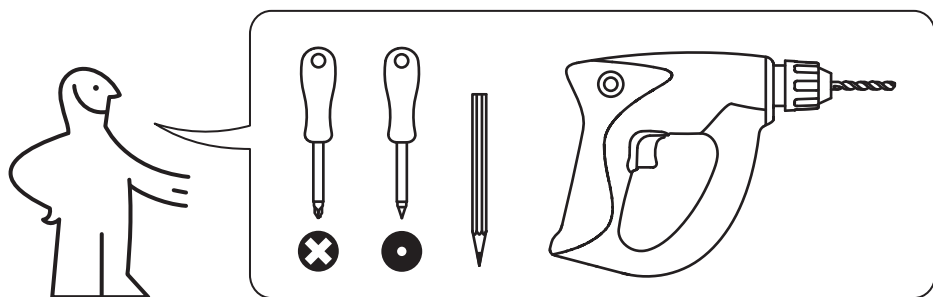
חשוב!

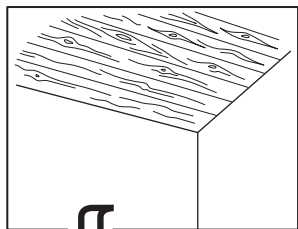
נתקו את זרם החשמל לפני תחילת תהליך ההתקנה. במדינות מסוימות על ההתקנה להתבצע על ידי חשמלאי מוסמך בלבד. מומלץ ליצור קשר עם חברת החשמל ולקבל מידע בנושא זה.

התקנה בחדרי אמבטיה  
התקנה על ידי חשמלאי מוסמך בלבד. יש לחבר את גוף התאורה באופן קבוע לרשת החשמל ולהתקינו באזור הנכון.

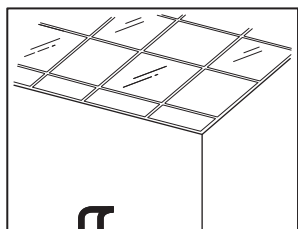
### עברית

מקור האור במנורה זו יוחלף אך ורק על ידי היצרן או איש שירות מטעמו או אדם מוסמך.





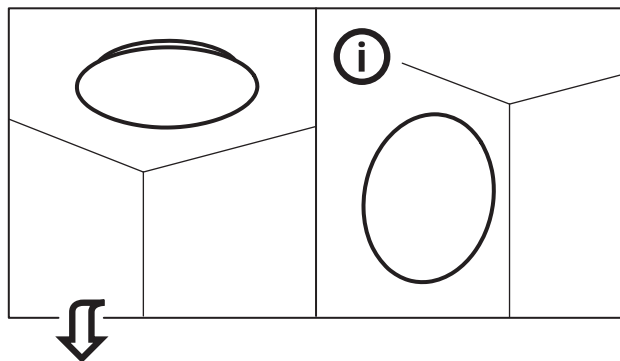
3x



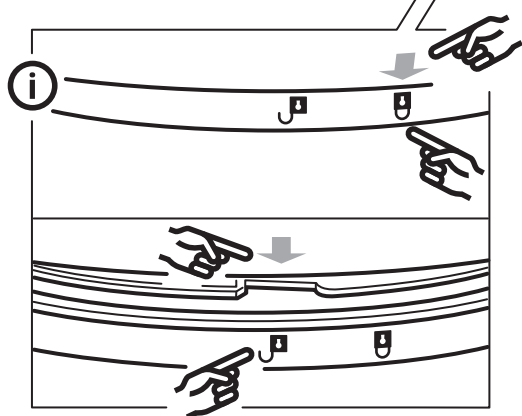
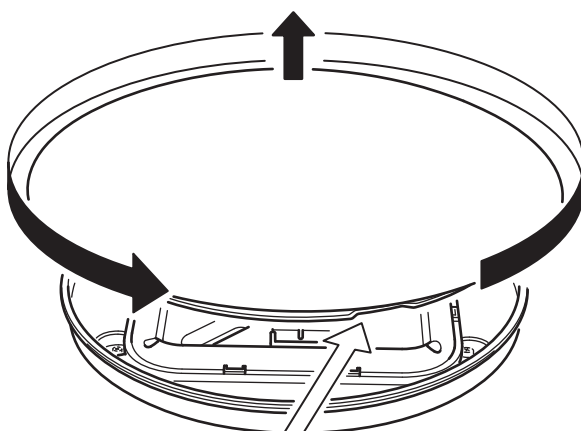
3x



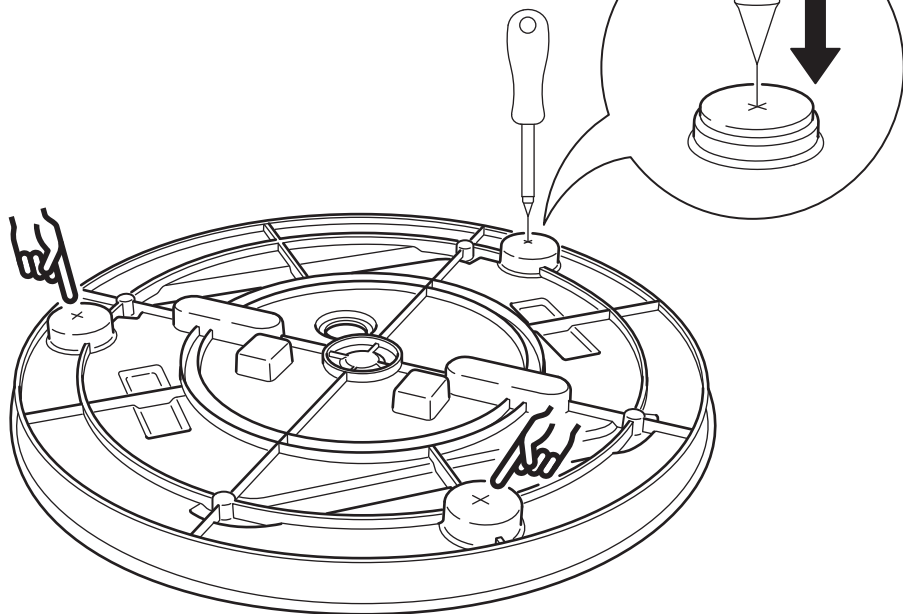
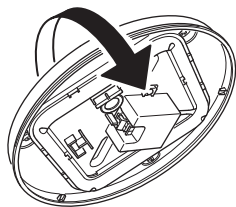
3x

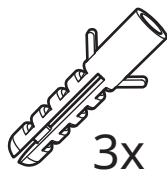
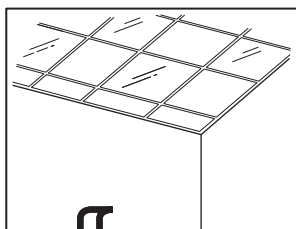
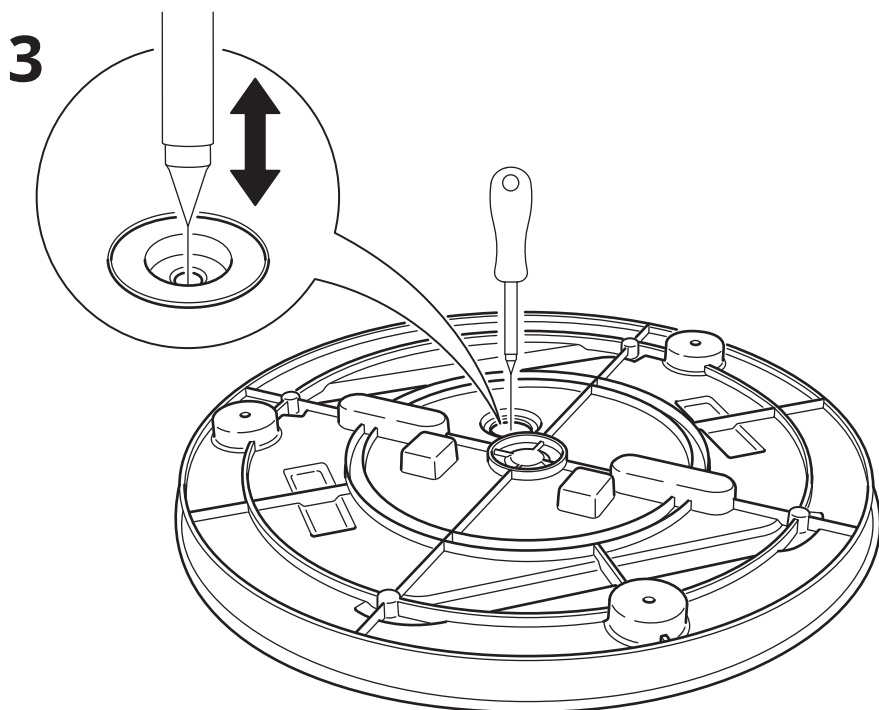


1

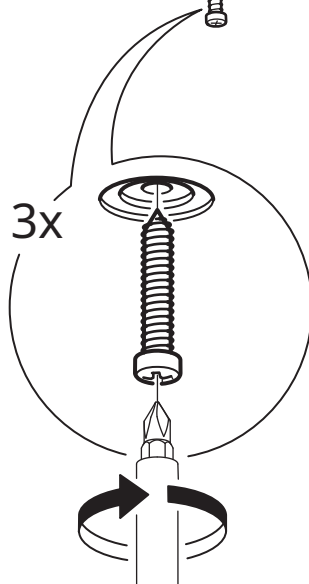
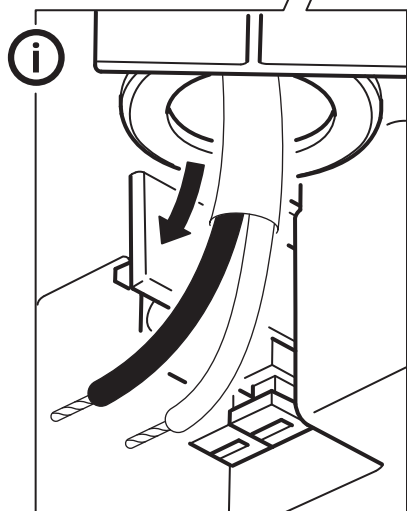
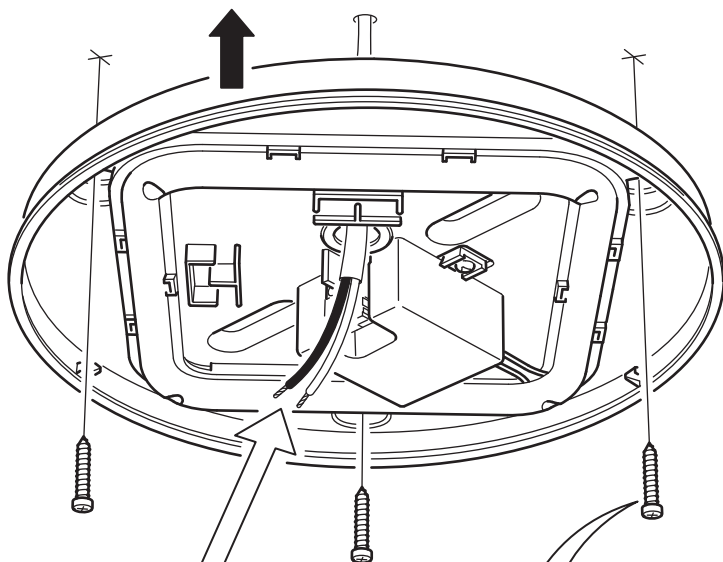


2

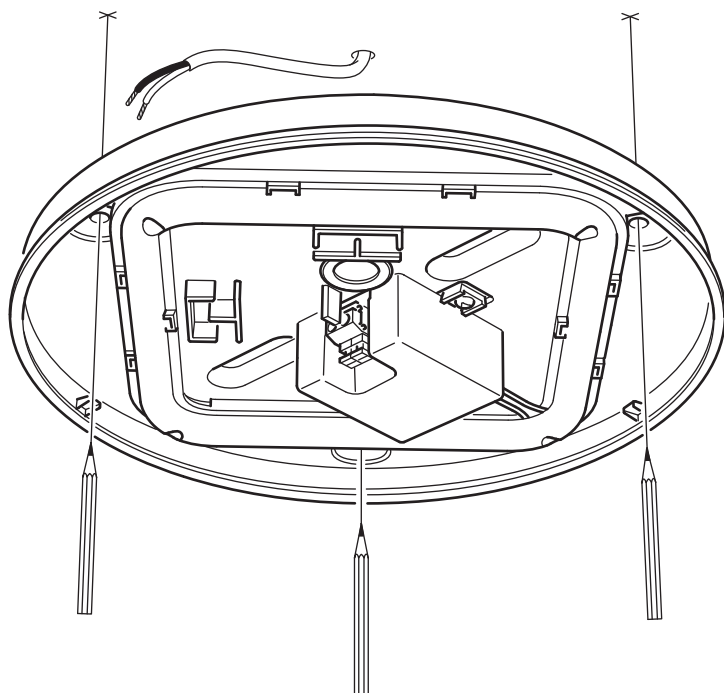
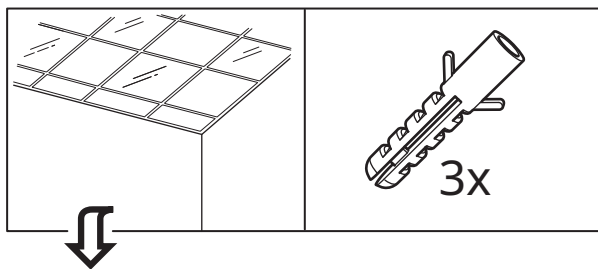




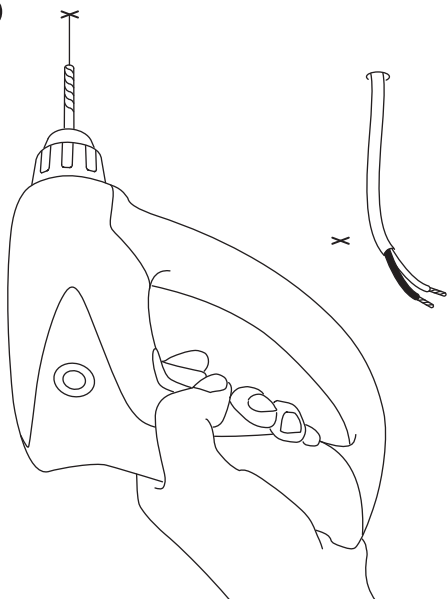
4



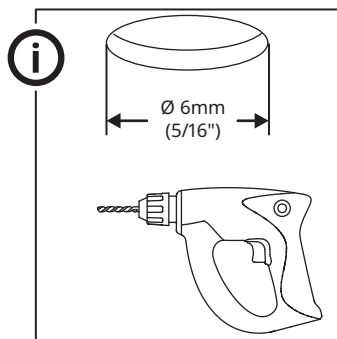
4



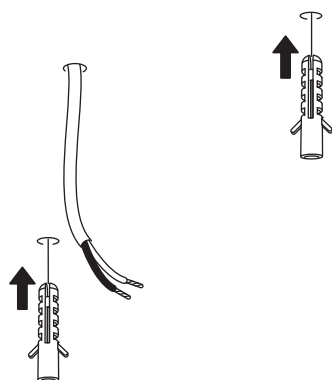
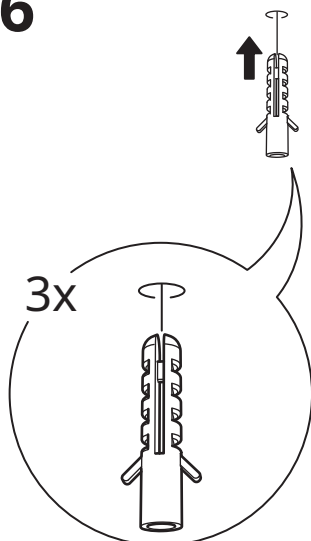
5



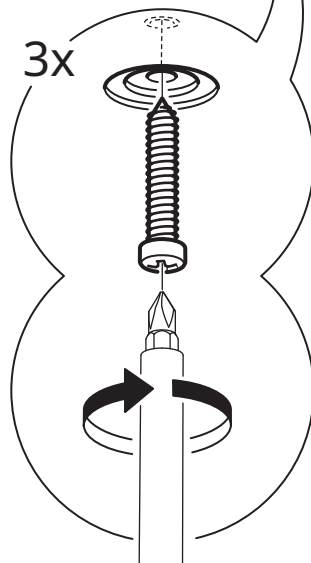
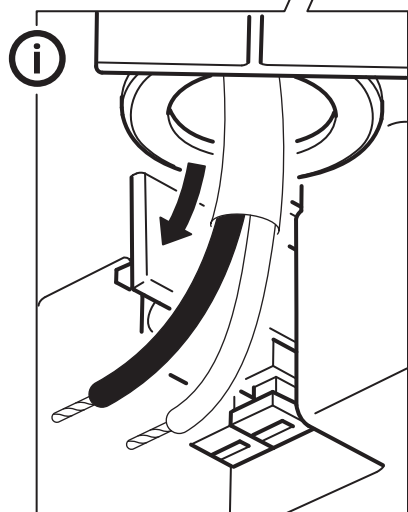
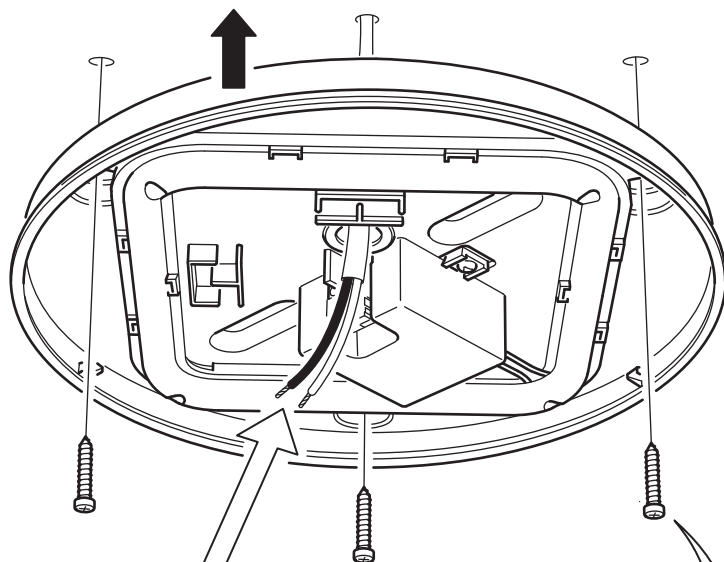
X



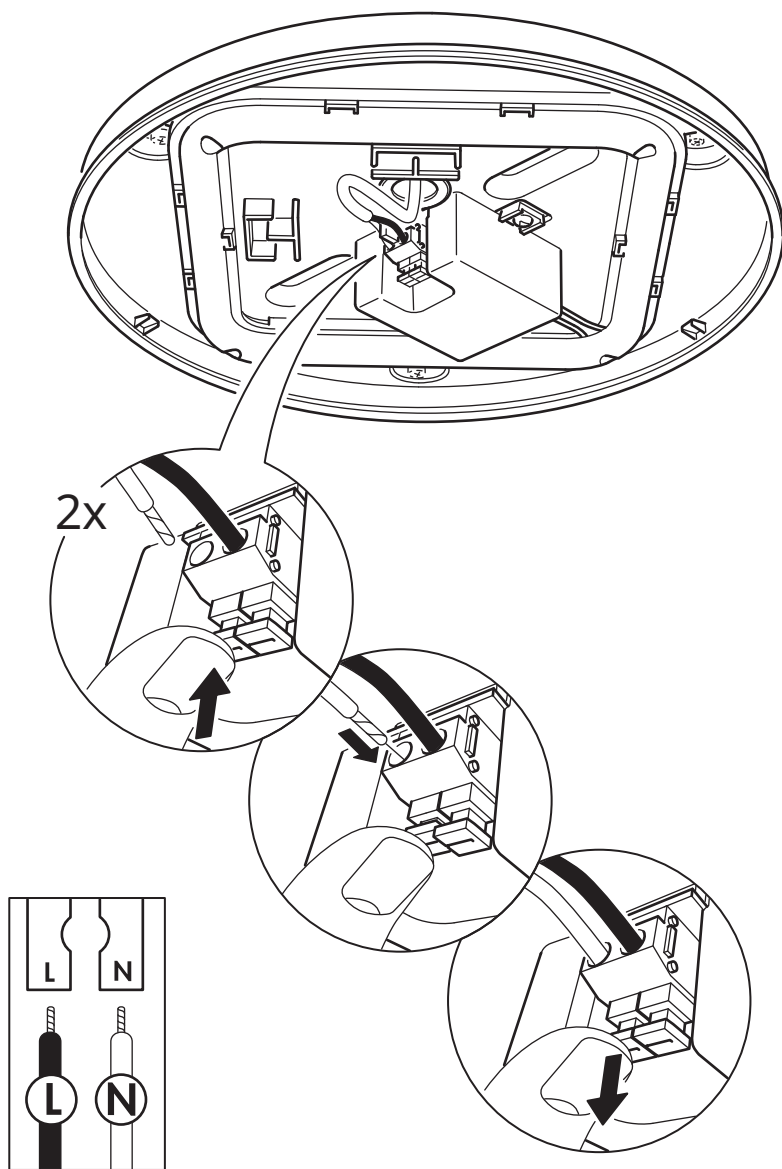
6

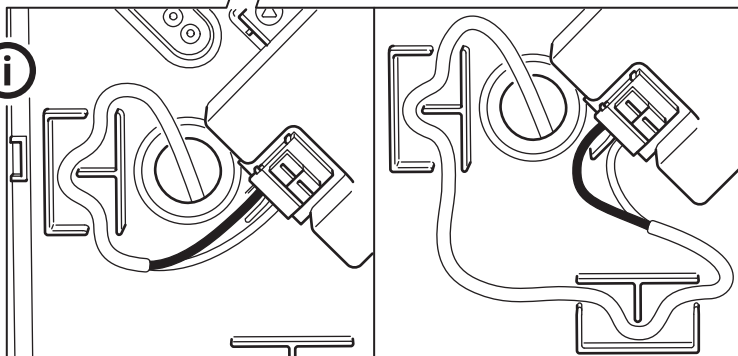
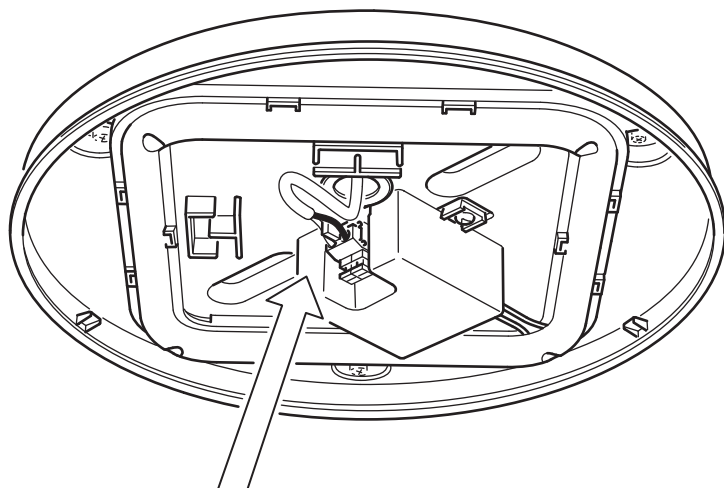


7



# 8





9

