

# MÖLNÅS

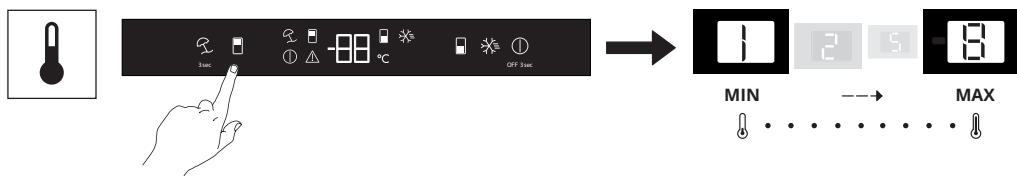
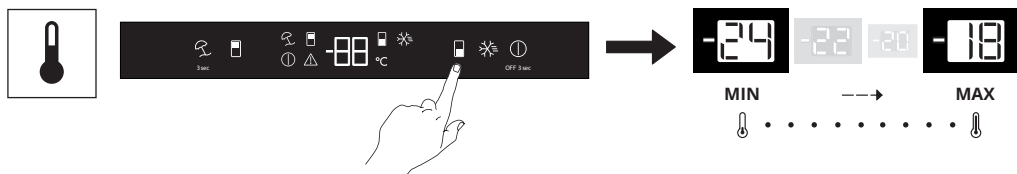
en

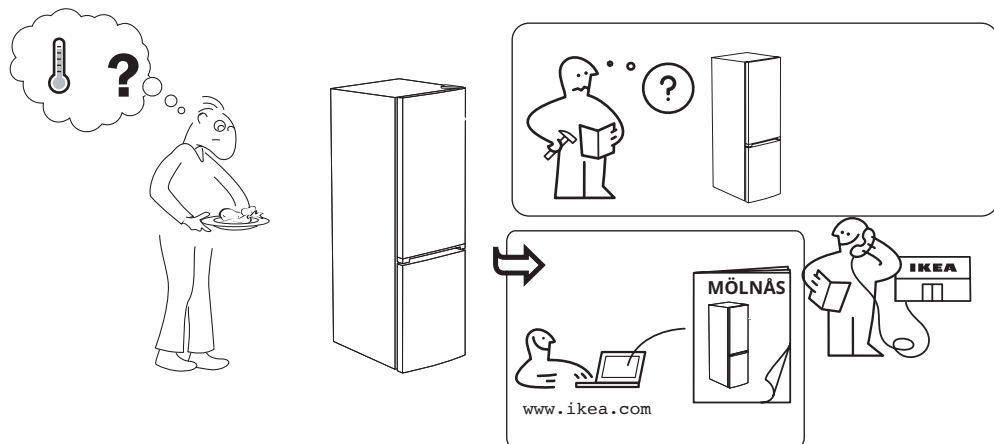


Design and Quality  
IKEA of Sweden

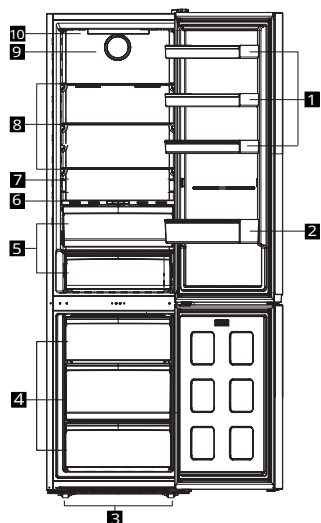




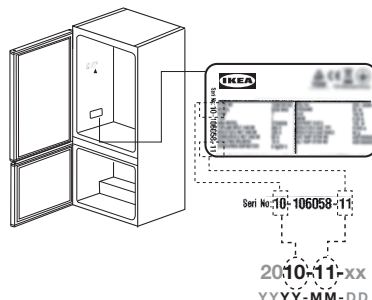




## Product description



- 1 Adjustable door shelves
- 2 Bottle shelf
- 3 Adjustable front feet
- 4 Freezer compartment
- 5 The dairy (cold storage) bin or crispser
- 6 Everfresh
- 7 Rating Plate
- 8 Adjustable shelves
- 9 Fan
- 10 Control Panel



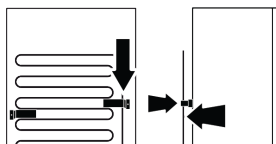
## Preparation

- For a freestanding appliance; this refrigerating appliance is not intended to be used as a built-in appliance.
- Your refrigerator should be installed at least 30 cm away from heat sources such as hobs, ovens, central heater and stoves and at least 5 cm away from electrical ovens and should not be located under direct sunlight.
- The ambient temperature of the room where you install your refrigerator should at least be +10°C. Operating your refrigerator under cooler conditions is not recommended with regard to its efficiency.
- Please make sure that the interior of your refrigerator is cleaned thoroughly.
- When you operate your refrigerator for the first time, please observe the following instructions during the initial six hours.
- The door should not be opened frequently.
- It must be operated empty without any food in it.
- Do not unplug your refrigerator. If a power failure occurs out of your control, please see the warnings in the "What to do if" section.
- Original packaging and foam materials should be kept for future transportations or moving.
- The baskets/drawers that are provided with the chill compartment must always be in use for low energy consumption and for better storage conditions.
- In some models, the instrument panel on display automatically turns off 1 minutes after the door has closed. It will be reactivated when the door has opened or pressed on any key.
- When temperature change caused by door opening/closing frequently, condensation on door/body shelves and the glass containers may be seen.
- Since hot and humid air will not directly penetrate into your product when the doors are not opened, your product will optimize itself in conditions sufficient to protect your food. Functions and components such as compressor, fan, heater, defrost, lighting, display and so on will operate according to the needs to consume minimum energy under these circumstances.
- In case of multiple options are present glass shelves must be placed so that the air outlets at the backwall are not blocked, preferably air outlets are remaining below the glass shelf. This combination may help improving air distribution and energy efficiency.
- Your product has adjustable condenser behind. For better performance please adjust it to open position as shown on Assembly Instructions manual.

### Condenser Position Setting

The condenser of the refrigerator is located at the rear. To minimize power consumption and increase energy efficiency the top and bottom of the condenser must be pulled back and secured as shown in the picture. When the condenser is pulled backwards, the brackets lock and the condenser's position is secured.

Wall fixation comes within fitting bag. Wall fixation part is being used for tilting safety & providing ventilation distance.



## First Use

☐ Before using your refrigerator, make sure the necessary preparations are made in line with the instructions in "Safety Information" and "Installation" sections.

If the product is transported horizontally, do not plug the product to power supply for first 4 hours.

Keep the product running without placing any food inside for 12 hours and do not open the door, unless absolutely necessary.

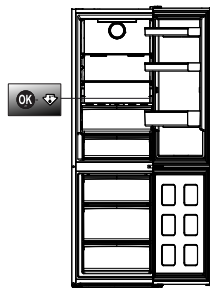
☐ A sound will be heard when the compressor is engaged. It is normal for the product to make noise even if the compressor is not running, as fluid and gas may be compressed in the cooling system.

☐ It is normal for the front edges of the refrigerator to be warm. These areas are designed to warm up in order to prevent condensation.

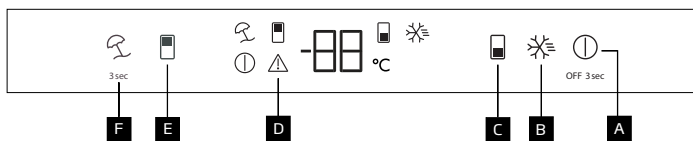
☐ For some models, control panel turns off automatically 1 minute after the door closes. It will be reactivated when the door is opened or any button is pressed.

**Cleaning the interior :** Do not use detergents, abrasive powders, chlorine or oil-based cleaners as they will damage the finish

**Important!** This appliance is sold in France. In accordance with regulations valid in this country it must be provided with a special device (see figure) placed in the lower compartment of the fridge to indicate the coldest zone of it.



## Daily use



- A** Product Switch Off Button
- B** Quick Freezing Key
- C** Freezer Compartment Temperature Setting Key
- D** Error Status Indicator
- E** Cooler Compartment Temperature Setting Key
- F** Vacation Function Key

Functions

Product Switch Off Button **A**

When this button is pressed for 3 seconds, the product switches to off mode, in off mode the **(A)** icon lights up on the display, in this mode the refrigerator does not perform cooling, when the button is pressed again for 3 seconds the refrigerator starts normal operation, the icon goes out.

Quick Freezing **B**

When the quick freeze key is pressed, the quick freeze icon **(B)** lights up and the quick freeze function shall be activated. The freezer compartment temperature is set to -27 °C. Press the key again to cancel the function. Quick freeze function will automatically self-cancel after a 48hours. To freeze a large amount of fresh food press the quick freeze key before placing them in the freezer compartment.

Freezer Compartment Temperature Setting Key **C**

Temperature setting is made for freezer compartment. By pressing the key the temperature of the freezing compartment can be set at -18,-19,-20,-21,-22,-23,-24 °C.

Error Status Indicator **D**

This indicator **(D)** shall be active when your refrigerator cannot perform adequate cooling or in case of any sensor error. The letter "E" appears on the

temperature display of the freezer compartment while the numbers 1, 2, 3..appear on the temperature display of the refrigerator compartment.These figures provide information to the authorized service on the error that has occurred. When you load the freezer compartment with hot food or if you leave the door open for a prolonged time, an exclamation mark can be lit. This is not a fault, this warning shall be removed when the food is cooled or pressed any key.

Cooler Compartment Temperature Setting **E**

Allows setting of temperature for cooler compartment. By pressing the key the cooling compartment can be set to 8, 7, 6, 5, 4, 3, 2 and 1°C.

Vacation Function **F**

To activate vacation function, press the button for 3 seconds.Vacation mode will be activated and the vacation icon **(F)** lights up. The "- -" symbol appears on the cooler compartment temperature display and the cooling compartment does not perform active cooling.When this function is activated, it is not convenient to keep food in the cooling compartment. Othercompartments continue to cool according to the temperatures set . Press and hold the key for 3 seconds again to cancel this function.

Installation

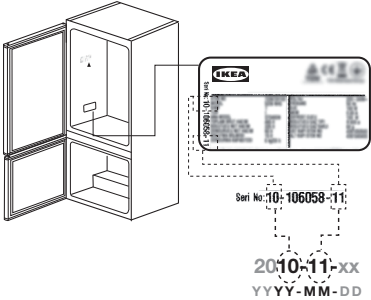
To make the product ready for use, be careful that the electrical wiring and plumbing are appropriate by referring to the information in the user manual. If not, call a qualified electrician and plumber and have the necessary arrangements made.

**⚠WARNING:** The manufacturer is not liable for damages caused by operations by unauthorized persons.To avoid shaking, place the product on a flat surface.

**⚠WARNING:**During the installation, the power plug of the product should not be plugged in. Otherwise, there is a danger of death or serious injury!

**⚠WARNING:** If the doorway of the room to where the product will be placed is so narrow that the product cannot pass through, pass the product by turning it to side; otherwise, call an authorized service.

- Do not expose the product to direct sunlight and do not store it in humid place.
- Do not install the product where the temperature drops below 10 °C.

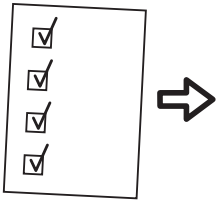


Inspection check list

Please follow the inspection checklist before using your appliance.  
If any answer is NOT please follow the relevant action.  
Please remember to write down the product serial number and article number as required and attach your receipt to this page.

Product serial number (rating plate)		
Product article number (rating plate)		
Purchasing date		





	If the answer is YES	Actions to do if NOT
Condensation Tray Check that the tube is inside the tray	<input checked="" type="checkbox"/> No action	Put the tube inside the tray
Making sure gasket seals all around the door when the door is closed	<input checked="" type="checkbox"/> No action	Refer to the AI - door alignment step
Checking no collision between parts/furniture while opening/closing the cooling door	<input checked="" type="checkbox"/> No action	Refer to the AI - door alignment step
Secure the installation inside any kitchen system and fixed as required	<input checked="" type="checkbox"/> No action	Follow the AI for the proper installation

Technical data

IKEA	MÖLNÅS	6	170	35	C
Brand	Model	Freezing capacity (kg/24h)	Energy consumption (kw/year)	Noise level (dba)	Energy class

This refrigerator contains biocidal products in the following parts to prevent dry film fungal growth and unwanted odours.

**Active substance:**

- Silver (CAS: 7440-22-4) contains (nano) silver for door handle and carbon filter
- Titanium dioxide (CAS: 13463-67-7) contains (nano) titanium dioxide for carbon filter
- IPBC (CAS: 55406-53-6) for seal

The concentrations of biocidal products are very low hence they should not pose unacceptable health risks.

