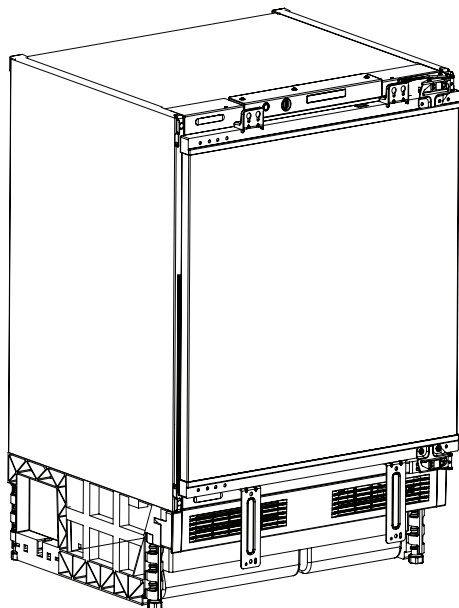


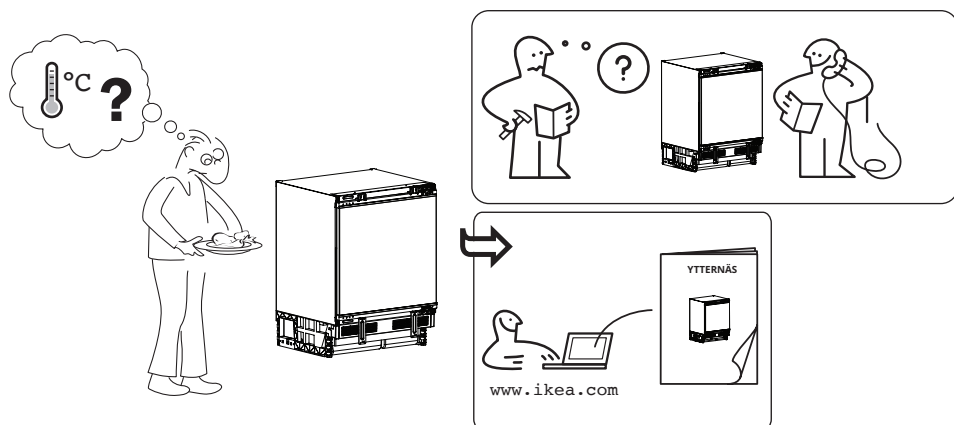
YTTERNÄS

en

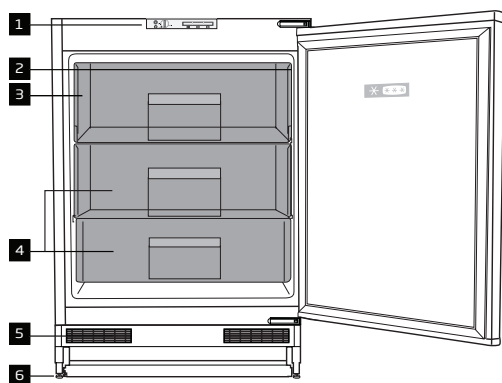


Design and Quality
IKEA of Sweden

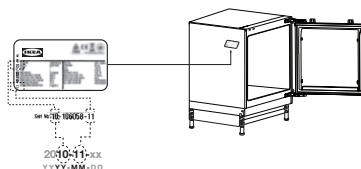




Product description



- 1 Control panel
- 2 Fast freeze compartment
- 3 Rating plate
- 4 Frozen food storage compartment
- 5 Ventilation grid
- 6 Adjustable legs

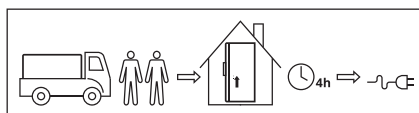


First Use

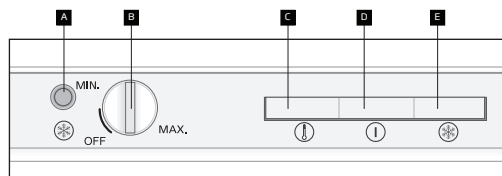
ⓘ Before using your refrigerator, make sure the necessary preparations are made in line with the instructions in "Safety Information" and "Installation" sections.

If the product is transported horizontally, do not plug the product to power supply for first 4 hours.

Keep the product running without placing any food inside for 12 hours and do not open the door, unless absolutely necessary.



Daily use



LED indicators and control panel

LED indicators in the front section of your refrigerator are intended to help you in monitoring the operation of your appliance.

When the appliance is plugged in, firstly all leds light up and disappear. After 10 sec. the green led lights up in condition as referred in Thermostat Setting Button section.

Keep your food in the refrigerator in a safe manner by monitoring and using these LEDs and controls as explained below:

Fast Freeze Button (A): Used to freeze the food fastly. Compressor may not operate immediately but after some time when the button is pressed and this is quite normal. To deactivate the function, the quick freeze button (A) is pressed once again or it is deactivated automatically after 24 hours

Thermostat Setting Button (B):

Used to set your refrigerator between minimum and maximum values. The appliance may go to OFF position when the knob is adjusted below MIN. When the green indicator light is OFF, the appliance is turned OFF also.

Once it is turned OFF (even for defrosting), please adjust the knob somewhere above MIN to be sure that it is turned ON again. When the appliance is turned ON, the green indicator (D) will light up.

Orange LED (🟡): Lights up when the fast freeze button on the LED panel is pressed. In this case, your refrigerator operates continuously.

Press the button again when the food you would like to fast freeze comes to the desired temperature and the orange LED will turn off.

Green LED (🟢): Lights up continuously after plugging in your refrigerator.

Red LED (🔴): It warns you by lighting up continuously when your refrigerators start to operate, if not enough cooling effect is obtained, when the door remains open for a long time and when excessive food is loaded.

When the appliance is plugged in, after first 60 hours, the red light may lights up. This means, the appliance could not reach the expected cooling effect still. When the expected cooling effect is achieved, the led lights off.

If the red LED lights up continuously when the conditions stated in the adjacent column do not exist, then call our Authorized Service.

Setting the operating temperature

Please choose the setting according to the desired temperature.

The interior temperature also depends on ambient temperature, the frequency with which the door is opened and the amount of foods kept inside.

Frequently opening the door causes the interior temperature to rise.

For this reason, it is recommended to close the door again as soon as possible after use.

The normal storage temperature of your appliance should be -18 °C (0 °F). Lower temperatures can be obtained by adjusting the thermostat knob towards .

We recommend checking the temperature with a thermometer to ensure that the storage compartments are kept to the desired temperature. Remember to take the reading immediately since the thermometer temperature will rise very rapidly after you remove it from the freezer.

Freezing

Freezing food

The freezing compartment is marked with ❄️ symbol.

You can use the appliance for freezing fresh food as well as for storing pre-frozen food.

Please refer to the recommendations given on the packaging of your food.

⚠️ Attention

Do not freeze fizzy drinks, as the bottle may burst when the liquid in it is frozen.

Be careful with frozen products such as coloured ice-cubes. Do not exceed the freezing capacity of your appliance in 24 hours. See the rating label.

In order to maintain the quality of the food, the freezing must be effected as rapidly as possible.

Thus, the freezing capacity will not be exceeded, and the temperature inside the freezer will not rise.

⚠️ Attention

Keep the already deep-frozen food always separated with freshly placed food.

When deep-freezing hot food, the cooling compressor will work until the food is completely frozen. This can temporarily cause excessive cooling of the refrigeration compartment.

If you find the freezer door difficult to open just after you have closed it, don't worry. This is due to the pressure difference which will equalize and allow the door to open normally after a few minutes.

You will hear a vacuum sound just after closing the door. This is quite normal.

- Frozen food can be stored up to 3 months in general in temperatures under -18°C. Storage periods may vary depending on the type of the food. Storage periods of expiry dates of such food are indicated on the food package by their manufacturers.
- Frozen food that you have purchased should be placed in the freezer before they thaw.
- Frozen food may be kept in the compartments with drawers.

To ensure that the high quality achieved by the frozen food manufacturer and the food retailer is maintained the following should be remembered:

1. Put packets in the freezer as quickly as possible after purchase.
2. Do not exceed "Use By", "Best Before" dates on the packaging.
3. Please note that drawers, baskets, flaps, trays are all removable.

Defrost

Increase in the thickness of the ice that forms on the evaporator of your refrigerator will decrease the cooling efficiency of it.

Therefore, you must defrost the ice when the thickness of the ice layer around the evaporator reaches to approximately 5 mm. It is recommended to defrost the ice when the refrigerator is not filled too much or is empty.

Wrap the food in the refrigerator by a few sheets of paper and keep them in the coolest place possible or in another refrigerator.

Turn the thermostat setting button to "off" or unplug the power cable in order to perform the defrosting.

Remove the drawers of your refrigerator (it is not required to remove the lid of the compartment equipped with a lid). After some time, the water that melts will accumulate in the pool located at the bottom of your refrigerator.

Remove the accumulating water by means of a soft sponge or etc. and dry the pool thoroughly.

Do not forget to turn the thermostat setting button to a position other than the "off" in order to restart your refrigerator.

Operate your refrigerator for 2 hours while it is empty and its doors are closed before replacing your food into it.

Installation

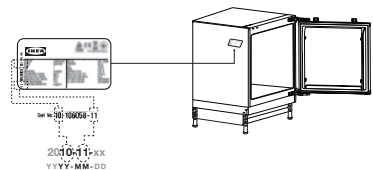
To make the product ready for use, be careful that the electrical wiring and plumbing are appropriate by referring to the information in the user manual. If not, call a qualified electrician and plumber and have the necessary arrangements made.

⚠**WARNING:** The manufacturer is not liable for damages caused by operations by unauthorized persons. To avoid shaking, place the product on a flat surface.

⚠**WARNING:** During the installation, the power plug of the product should not be plugged in. Otherwise, there is a danger of death or serious injury!

⚠**WARNING:** If the doorway of the room to where the product will be placed is so narrow that the product cannot pass through, pass the product by turning it to side; otherwise, call an authorized service.

- Do not expose the product to direct sunlight and do not store it in humid place.
- Do not install the product where the temperature drops below 10 °C.



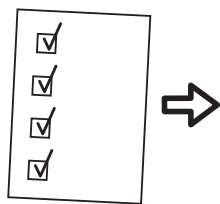
Inspection check list

Please follow the inspection checklist before using your appliance.

If any answer is NOT please follow the relevant action.

Please remember to write down the product serial number and article number as required and attach your receipt to this page.

Product serial number (rating plate)	
Product artical number (rating plate)	
Purchasing date	



	If the answer is YES	Actions to do if NOT
Condensation Tray Check that the tube is inside the tray	<input checked="" type="checkbox"/> No action	Put the tube inside the tray
Making sure gasket seals all around the door when the door is closed	<input checked="" type="checkbox"/> No action	Refer to the AI - door alignment step
Checking no collision between parts/furniture while opening/closing the cooling door	<input checked="" type="checkbox"/> No action	Refer to the AI - door alignment step
Secure the installation inside any kitchen system and fixed as required	<input checked="" type="checkbox"/> No action	Follow the AI for the proper installation

Technical data

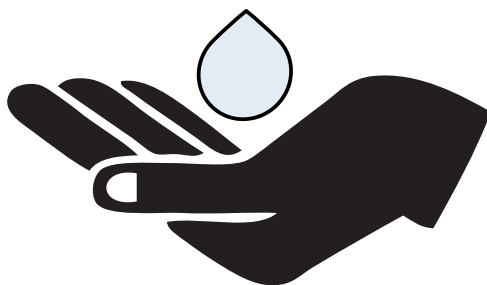
IKEA	YTTERNÄS	4,9	176	36	E
Brand	Model	Freezing capacity (kg/24h)	Energy consumption (kw/year)	Noise level (dba)	Energy class

This refrigerator contains biocidal products in the following parts to prevent dry film fungal growth and unwanted odours.

Active substance:

- Silver (CAS: 7440-22-4) contains (nano) silver for door handle and carbon filter
- Titanium dioxide (CAS: 13463-67-7) contains (nano) titanium dioxide for carbon filter
- IPBC (CAS: 55406-53-6) for seal

The concentrations of biocidal products are very low hence they should not pose unacceptable health risks.



Potential Noise Reason

