

UDDARP

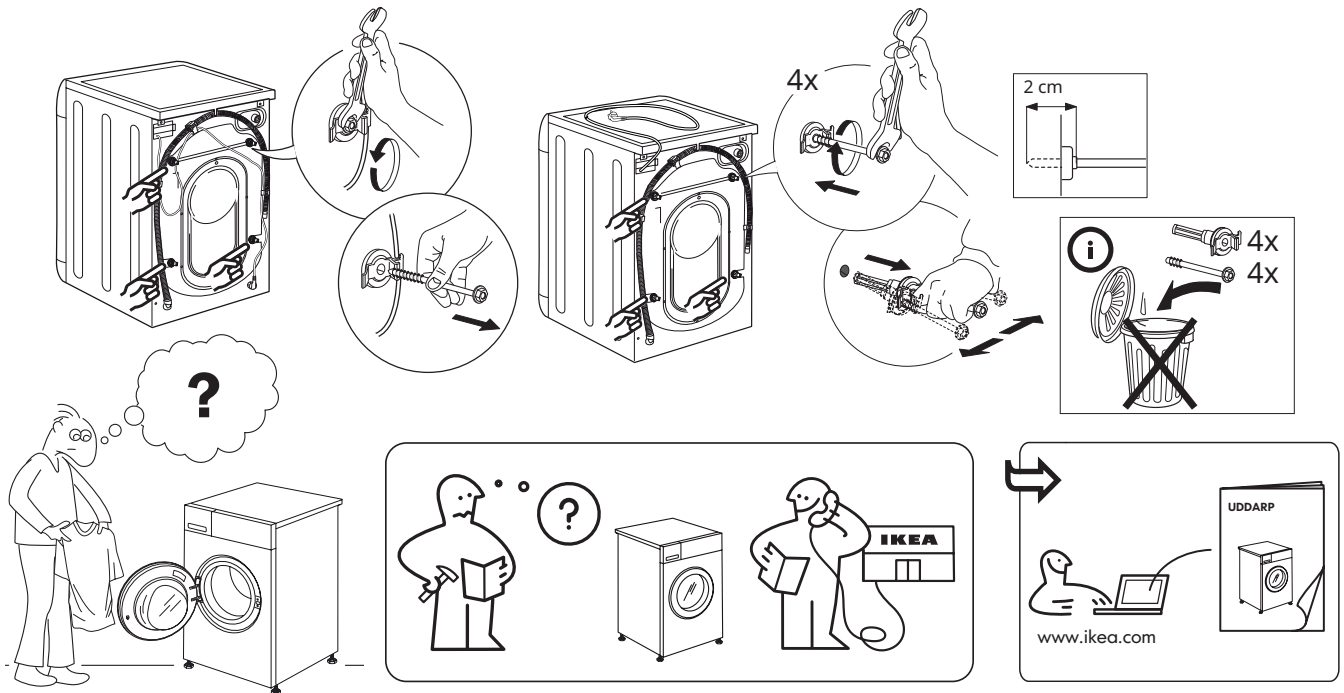
GB



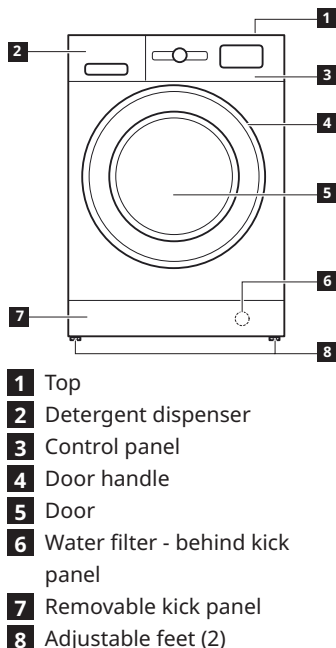
Design and Quality
IKEA of Sweden

Installation

- ⚠ Read the safety booklet and refer to assembly instruction. The manufacturer does not accept any responsibility for damage or injury through failure to comply with the safety precaution.
- ⚠ Make sure that all transit bolts are removed.
- ⚠ Make sure that hoses and cable are correctly connected.
- ⚠ The appliance must be handled and installed by two or more persons - risk of injury. Use protective gloves to unpack and install - risk of cuts.
- ⚠ When installing the appliance make sure that the four feet are stable and resting on the floor, adjusting them as required, and check that the appliance is perfectly level using a spirit level.
- ⚠ If the appliance is being installed on wood or "floating" floors (certain parquet and laminate materials), secure a 60 x 60 x 3 cm (at least) sheet of plywood to the floor then place the appliance on top of this.
- ⚠ Connect the water inlet hose(s) to the water supply in accordance with the regulations of your local water company.
- ⚠ The washing machine is fitted with transport bolts to prevent any possible damage to the interior during transport. Before using the machine, it is imperative that the transport bolts are removed. After their removal, cover the openings with the 4 enclosed plastic caps.



Product description



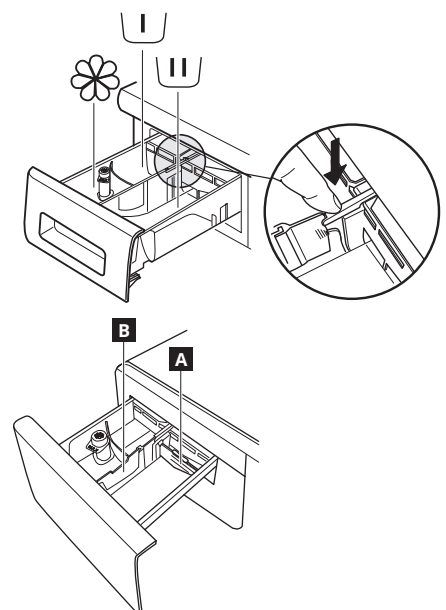
DETERGENT DISPENSER

1. Main wash compartment
 - Detergent for the main wash
 - Stain remover
 - Water softener
2. Prewash compartment
 - Detergent for the prewash
3. Softener compartment
 - Fabric softener
 - Liquid starch

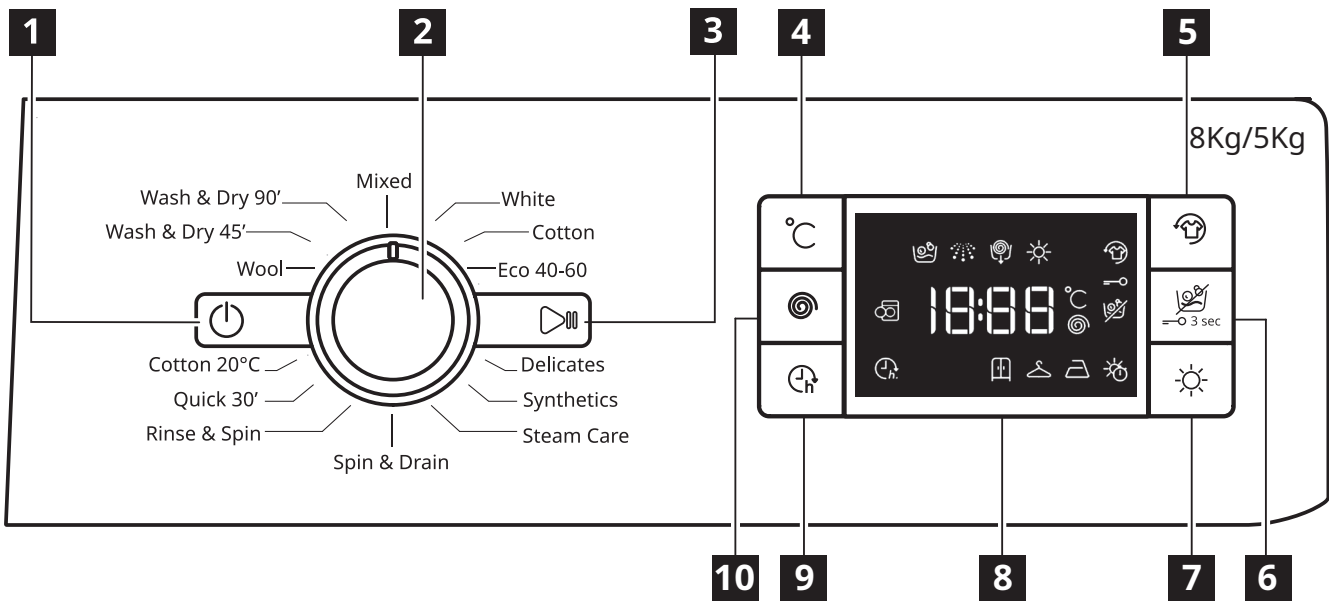
⚠ Pour softener or starch solution into the compartment without exceeding the "MAX" level.

4. Release button (press to remove tray for cleaning)

Preferably use the partition **A** when washing with a liquid detergent for washing, to ensure that the correct quantity of detergent is used (the partition is included in the bag containing the instructions). Move the partition into slot **B** when using detergent powder.



Control Panel



- 1** ON/OFF button

2 Programme selector

3 Start/Pause button
- 4** Temperature button

5 Fresh Plus button

6 Dry Only button/Lock button
- 7** Drying settings button

8 Display

9 Start delay button

10 Spin speed button

The options/functions are not available with all washing programmes and an option/function can exclude another one, in these case the appliance doesn't allow an incompatible setting.

DISPLAY INDICATORS

	Fresh Plus	This indicator will light up <ul style="list-style-type: none">after you press Fresh Plus button.
	Start delay	This indicator will light up <ul style="list-style-type: none">after you press Start delay button.
	Key lock	This indicator will light up <ul style="list-style-type: none">after the "Key lock" function is activated, which is done by pressing the 6 key for 3 seconds.

First Use

See the section DAILY USE for instructions on selecting and starting a programme.

FIRST CYCLE OPERATION

Remove any manufacturing debris:

- Start the programme **without adding any laundry** (with empty drum).
- Select the "Cotton" programme with a temperature setting of 60°C.

- Pour a small quantity of detergent powder into the main wash compartment of the detergent dispenser (maximum 1/3 of the quantity the detergent manufacturer recommends for lightly soiled laundry).

Programme Chart

Maximum load 8 kg Power input in off mode 0.5 W / in left-on mode 8 W								Detergents and additives			Recommended detergent		Residual dampness % (***)	Energy consumption kWh	Total water lt	Laundry temperature °C
Wash cycle	Temperatures		Max spin (rpm)	Drying	Max load for washing (kg)	Max load for drying (kg)	Duration (h : mm)	Prewash	Wash	Fabric softener	Powder	Liquid				
	Setting	Range														
								⏸	⏹	⊗						
MIXED	40°C	❄ - 40°C	1000	✓	8.0	5.0	0:59	-	●	○	-	✓	-	-	-	-
WHITE	60°C	❄ - 90°C	1400	✓	8.0	5.0	2:45	● (90°)	●	○	✓	-	49	0.90	90	55
COTTON (2)	40°C	❄ - 60°C	1400	✓	8.0	5.0	3:55	-	●	○	✓	✓	49	1.40	105	45
ECO 40-60 (1) (WASH)	40°C	40°C	1351	✓	8.0	5.0	3:30	-	●	○	✓	✓	53	0.77	54	33
			1351	✓	4.0		2:45	-	●	○	✓	✓	53	0.65	52	36
			1351	✓	2.0		2:10		●	○	✓	✓	53	0.45	37	33
DELICATES	30°C	❄ - 30°C	-	✓	1.0	1.0	1:20	-	●	○	-	✓	-	-	-	-
SYNTHETICS (3)	40°C	❄ - 60°C	1200	✓	4.0	4.0	2:55	-	●	○	✓	✓	35	0.8	55	43
STEAM CARE	-	-	-	-	2.0	-	0:20	-	-	-	-	-	-	-	-	-
SPIN & DRAIN *	-	-	1400	✓	8.0	5.0	0:10	-	-	-	-	-	-	-	-	-
RINSE & SPIN	-	-	1400	✓	8.0	5.0	0:55	-	-	○	-	-	-	-	-	-
QUICK 30'	30°C	❄ - 30°C	800	-	4.5	-	0:30	-	●	○	-	✓	71	0.20	45	27
COTTON 20°C	20°C	❄ - 20°C	1400	✓	8.0	5.0	1:50	-	●	○	-	✓	49	0.16	90	22
WOOL	40°C	❄ - 40°C	800	✓	2.0	2.0	1:25	-	●	○	-	✓	-	-	-	-
WASH & DRY 45'	30°C	30°C	1400	✓	1.0	1.0	0:45	-	●	○	-	✓	-	-	-	-
WASH & DRY 90'	30°C	30°C	1200	✓	2.0	2.0	1:30	-	●	○	-	✓	-	-	-	-
ECO 40-60 (4) (WASH&DRYING)	40°C	40°C	1351	✓	5.0	5.0	9:10		●	○	✓	✓	0	3.30	70	34
			1351	✓	2.5	2.5	5:10		●	○	✓	✓	0	1.69	50	33

✓ Selectable/optional

- Not selectable/applicable

● Required quantity

○ Optional quantity

Sensor technology - the sensor technology adapts water, energy and programme duration to your wash load.

⚠ For wash programmes with temperatures above 50°C, we recommend using powder detergent rather than liquid, and following the directions given on the detergent package.

* By selecting the cycle and excluding the spin cycle, the washer-dryer will drain only.

*** After programme end and spinning with maximum selectable spin speed, in default programme setting.


The cycle duration indicated on the display or instruction manual is an estimate based on standard conditions. The actual duration may vary in relation to several factors, such as the temperature and pressure of the incoming water, ambient temperature, amount of detergent, load quantity and type, load balancing and any additional options selected. The values given for programmes other than the Eco 40-60 programme are indicative only.

1) Eco 40-60 (Wash) - Test wash cycle in compliance with EU Ecodesign regulation 2019/2014.

The most efficient programme in terms of energy and water consumption for washing normally soiled cotton laundry.

Note: spin speed values shown on the display can slightly differs from the values stated in the table.

4) Eco 40-60 (Wash & Drying) - Test wash and drying cycle in compliance with EU Ecodesign regulation 2019/2014.

To access "wash and dry" cycle select "Eco 40-60" wash programme and set ☀ option level to „“. The most efficient programme in terms of energy and water consumption for washing and drying normally soiled cotton laundry. At the end of cycle the garments can be immediately stored to the cupboard.

For all testing institutes:

2) Long cotton cycle: set programme at temperature 40°C.

3) Long synthetics cycle: set cycle at a temperature of 40°C.

Daily use

1. Load laundry



Prepare the laundry, following the recommendations given in the section "HINTS AND TIPS". Open the door and load the laundry into the drum, without exceeding the maximum load capacities indicated in the Programme Chart.

2. Close door



Pressing until the latch audibly locks, and check that there is no laundry trapped between the door glass and the rubber seal.

3. Open water tap



Check that the washer dryer is connected correctly to the water mains. Open the water tap. **Switching on the washer dryer machine**
Press button ; the lamp flashes slowly.

4. Selecting a programme and customising a cycle.

The following functions are possible with this appliance:

- Wash only
- Wash and dry
- Dry only

Wash only

Select the required programme with the "Program selector" dial. The washing machine automatically displays the default temperature setting and then the duration of the washing cycle. Adjust the temperature and/or spin speed settings if needed with the relative buttons.

- Press button "Temp" to cycle through progressively lower temperature settings until cold wash is set ("-" shown on display).
- Press button "Spin speed" to cycle through progressively lower spin speed settings until the spin cycle is turned off ("0" shown on display).
- Pressing the button again sets the highest possible setting.
- Select the required options (if necessary).
- Press the button to select the option; the respective button lamp illuminates.
- Press the button again to cancel the option; the lamp extinguishes.

If the selected option is not compatible with the programme set, an error warning tone sounds and the indicator lamp flashes three times. The option is not selected.

Wash and dry

To wash and dry a load with no interruption between the wash and dry cycles, make sure that the load does not exceed the maximum permissible drying load for the selected programme (see the column "Max. load for drying cycle" in the Programme chart).

1. Follow the instructions given in the paragraph "Wash Only" to select and, if necessary, customise the required programme.
2. Press "Drying settings" to select the required drying mode. Two drying modes are available: automatic or timer.

Automatic drying with selectable levels:

In automatic drying mode, the washer dryer machine dries the laundry until the set level of dryness is reached. Pressing button "Drying settings" once automatically selects the highest drying level available for the selected programme. Press the button again to reduce the drying level.

The following levels are available:

Wardrobe : laundry is completely dry and ready to be put away in the wardrobe without ironing.
Hanger : laundry is left slightly damp to minimise creasing. Garments must be hung to air dry completely.
Iron : garments are left reasonably damp to make ironing easier.

Timer drying mode:

Press button "Drying settings" repeatedly to set timer drying mode. After cycling through all the automatic drying levels, continue pressing button "Drying settings" until the desired time is displayed. Values from 210 to 30 minutes are settable. To wash a load of laundry larger than the maximum permissible load for drying (see the column "Max. load for drying cycle" in the Programme chart), remove a few garments once the washing cycle has finished before starting the drying cycle. Proceed as follows:

1. Follow the instructions given in the paragraph "Wash Only" to select and, if necessary, customise the required programme.
2. Do not include a drying cycle.
3. Once the washing cycle is finished, open the door and remove a few garments to reduce the load. Now follow the instructions for "Dry only".

N.B.: always allow a cooling down period after drying before opening the door. When using the two preset cycles "Wash & Dry 45" and "Wash & Dry 90", it is not necessary to select and start a drying cycle.

Dry only

This function is used to simply dry a wet load washed previously in the washer dryer or by hand.

1. Select a suitable programme for the laundry you want to dry (e.g. select cotton to dry wet cotton laundry).
2. Press button "Dry only" to dry without a wash cycle.
3. Press "Drying settings" to select the required drying mode. Two drying modes are available: automatic or timer.

Automatic drying with selectable levels:

In automatic drying mode, the washer dryer machine dries the laundry until the set level of dryness is reached. Pressing button "Drying settings" once automatically selects the highest drying level available for the selected programme. Press the button again to reduce the drying level.

The following levels are available:

Wardrobe : laundry is completely dry and ready to be put away in the wardrobe without ironing.
Hanger : laundry is left slightly damp to minimise creasing. Garments must be hung to air dry completely.
Iron : garments are left reasonably damp to make ironing easier.

Timer drying mode:

Press button "Drying settings" repeatedly to set timer drying mode. After cycling through all the automatic drying levels, continue pressing button "Drying settings" until the desired time is displayed. Values from 210 to 30 minutes are settable.

N.B.: always allow a cooling down period after drying before opening the door.

5. USING THE CORRECT AMOUNT OF DETERGENT

Pull out the tray and pour detergent into the relative compartments as described in "Detergent dispenser". This is only necessary when using a wash only or a wash + dry programme.

6. Delaying the start of a programme


- To set the selected programme to start at a later time (Max 24h), press the button to set the desired delay time.
- The symbol lights on the display when this function is enabled. To cancel the delayed start, press the button again until the value "0" is shown on the display.

7. STARTING A PROGRAMME.

Close the detergent dispenser and press the "Start/Pause" button.

The machine will lock the door (symbol off) and drum will start to rotate; the door will be unlocked (symbol on) and then locked again (symbol off) as preparation phase of each washing cycle. The "Clicking" noise is part of the door locking mechanism. Water will enter the drum and start the washing phase once the door is locked.


8. CANCELLING A RUNNING PROGRAMME (IF NECESSARY)



Press and hold the button  a count down is shown in the display until the washer dryer stops.

If the water level and temperature are low enough, the door unlocks and may be opened.

The door remains locked if there is water in the drum. To unlock the door, switch the washer dryer on, select the SPIN & DRAIN programme and turn the spin function off by setting the spin speed to 0. The water is emptied and the door unlocks at the end of the programme.

9. SWITCHING THE WASHER DRYER OFF AT THE END OF A PROGRAMME.

At the end of the cycle, the message "END" is shown on the display. The door can only be opened when the  symbol lights. Check that the door unlocked symbol is lit, then open the door and take out the laundry.

Press  to switch the washer dryer off. To save energy, if the washer dryer is not switched off manually with the  button, it turns off automatically approximately 10 minutes after the end of the programme.

Leave the door ajar to let the interior of the washer dryer dry.

Hints and Tips

Sort your laundry according to

Type of fabric/care label (cotton, mixed fibres, synthetics, wool, handwash items).

Colour (separate coloured and white items, wash new coloured items separately).

Delicates (wash small items – like nylon stockings – and items with hooks – like bras – in a cloth bag or pillow case with zip).

Empty all pockets

Objects like coins or lighters can damage your laundry as well as the drum.

Follow the dosage recommendation / additives

It optimizes the cleaning result, it avoids irritating residues of surplus detergent in your laundry and it saves money by avoiding waste of surplus detergent.

Use low temperature and longer duration

The most efficient programmes in terms of energy consumption are generally those that perform at lower temperatures and longer duration.

Observe the load sizes

Load your washing machine up to the capacity indicated in the "PROGRAMME CHART" table to save water and energy.

Noise and remaining moisture content

They are influenced by the spinning speed: the higher the spinning speed in the spinning phase, the higher the noise and the lower the remaining moisture content.

WASH SYMBOLS ON GARMENT LABELS

The value given in the tub symbol is the maximum temperature possible for washing the garment.



Normal mechanical action



Reduced mechanical action



Much reduced mechanical action



Hand wash only



Do not wash

SAVING ENERGY AND PROTECTING THE ENVIRONMENT

- Keeping within the load limits indicated in the programme chart will optimise energy, water and detergent consumption and reduce washing times.
- Do not exceed the detergent quantities recommended by the detergent manufacturer.
- Save energy by using a 60°C instead of a 90°C wash programme, or by using a 40°C instead of a 60°C wash programme. We recommend using the Eco 40-60 programme for cotton garments, which is longer but uses less energy.
- To save energy and time when washing and drying, select highest spin speed available for the programme to reduce the residual water remaining in the garments at the end of the wash cycle.

What to do if...

Your washing machine is equipped with various automatic safety and feedback functions. They enable failures and needed maintenance to be detected and indicated accordingly.

Problem	Possible causes / Solutions:
The washing machine does not turn on.	<ul style="list-style-type: none"> The plug is not inserted into the electrical outlet, or not enough to make contact. There has been a power failure.
The wash cycle does not start.	<ul style="list-style-type: none"> The "ON/OFF" button has not been pressed. The "Start/Pause" button has not been pressed. The water tap is not open. A "Start delay" has been set. The door is not fully closed.
The washing machine does not fill with water (the message "h2o" is shown on the display). "Beep" sound every 5 seconds.	<ul style="list-style-type: none"> The water intake hose is not connected to the tap. The hose is bent. The water tap is not open. The mains water supply has been shut off. There is not enough pressure. The "Start/Pause" button has not been pressed.
The washing machine loads and drains water continuously.	<ul style="list-style-type: none"> The drain hose has not been installed at 65 to 100 cm from the ground. The end of the drain hose is immersed in water. The drain connector on the wall does not have an air vent. If the problem persists after having performed these checks, close the water tap, shut off the washing machine, and call the After-sales service. If the dwelling is located on one of the uppermost floors of a building, a siphon effect can sometimes occur, thus causing the washing machine to load and drain water continuously. Special anti-siphon valves are available on the market to prevent these types of problems.
The washing machine does not drain or does not spin.	<ul style="list-style-type: none"> The programme does not include the draining function: with certain programmes it must be activated manually. The drain hose is bent. The drain line is obstructed.
The washing machine vibrates excessively during the spin cycle.	<ul style="list-style-type: none"> At the time of installation, the drum was not properly unblocked. The washing machine is not level. The washing machine is squeezed between furniture and the wall.
The washing machine leaks water.	<ul style="list-style-type: none"> The water intake hose has not been tightened properly. The detergent dispenser is clogged. The drain hose has not been properly fastened.
The machine is locked and the display flashes, indicating an error code (e.g. F-01, F-..).	<ul style="list-style-type: none"> Shut off the machine, disconnect the plug from the outlet, and wait about 1 minute before turning it back on. If the problem persists, call the After-sales service.
Too much foam is formed.	<ul style="list-style-type: none"> The detergent is not compatible with the washing machine (it must bear the wording "for washing machines", "for hand washing and washing machines", or something similar). The dosage was excessive.
Door is locked, with or without failure indication, and the programme does not run.	<ul style="list-style-type: none"> Door is locked in case of power breakdown. Programme will continue automatically as soon as the mains is available again. Washing machine is in a standstill. Programme will continue automatically after the origin of the standstill does not persist anymore.

Technical data

IKEA	UDDARP	5 / 8	220-240 50	E / C	0,531 / 0,078	266 / 63	62 / 48	B	4	0,5	81	D
Brand	Model	Rated capacity (kg)	Voltage (V) Frequency (Hz)	Energy efficiency class for the complete cycle/washing cycle	Energy consumption in kWh per kg per cycle, for the wash and dry cycle/washing cycle	Weighted energy consumption in kWh per 100 complete cycle/washing cycles	Weighted water consumption per cycle in litre for the complete cycle/washing cycle	Spin-drying efficiency class	Power consumption in		Noise emissions during eco 40-60 programme (spinning phase) dB(A)	Noise Emission Class
									delay start (W)	standby mode (W)		

