

# FULLSTÄNDIG

GB



Design and Quality  
IKEA of Sweden





Please refer to the last page of this manual for the full list of IKEA appointed Authorized Service Centre and relative national phone numbers.

## ENGLISH


Contents


Safety Information	4	What to do if ...	10
Use	7	Technical data	11
Product description	8	Environmental concerns	12
Control panel	8	IKEA GUARANTEE	13
Cleaning and maintenance	8		


Safety Information

Before first use

Your safety and that of others is paramount.  
Remove cardboard protection pieces, protective film and adhesive labels from accessories. Check the appliance for any transport damage.  
To avoid any damage do not place any weights on the appliance. Do not expose the appliance to atmospheric agents. This manual and the appliance itself provide important safety warnings, to be read and observed at all times.

 This is the attention symbol, pertaining to safety, which alerts users to potential risks to themselves and others.  
All safety warnings are preceded by the attention symbol and the following terms:


 **DANGER:** indicates a hazardous situation which, if not avoided, will cause serious injury.


 **WARNING:** Indicates a hazardous situation which, if

not avoided, could cause serious injury.  
All safety warnings give specific details of the potential danger/ warning present and indicate how to reduce risk of injury, damage and electric shock resulting from improper use of the appliance. Carefully observe the following instructions.

Precautions and general recommendations


- The electrical installation and the electrical connection must be carried out by a qualified technician according to the manufacturer's instructions and in compliance with the local safety regulations. Do not repair or replace any part of the appliance unless specifically stated in the user manual.
- The appliance must be disconnected from the power supply before carrying out any installation work.

 **WARNING:** Failure to install the screws or fixing device in accordance with these instructions may result in electrical hazards.

- Earthing of the appliance is compulsory. (Not possible for class II hoods identified by the symbol  on the dataplate).
- Do not pull the power supply cable in order to unplug the appliance.
- The electrical components must not be accessible to the user after installation.
- Do not touch the appliance with any wet part of the body and do not operate it when barefoot.
- This appliance can be used by children aged from 8 years and above and persons with reduced physical, sensory or mental capabilities or lack of experience and knowledge if they have been given supervision or instruction concerning use of the appliance in a safe way and understand the hazards involved. Children shall not play with the appliance. Cleaning and user maintenance shall not be made by children without supervision.
- All other maintenance services must be carried out by a specialised technician.
- When drilling through the wall pay attention not to damage electric connections and/or pipes.
- Air vents must always discharge to the outside.
- The manufacturer rejects all responsibilities for any damage caused by improper use or wrong settings.
- Appropriate maintenance and cleaning ensure the good working order and the best performance of the appliance. Regularly clean all stubborn surface dirt to avoid grease build up. Remove and clean or change the filter regularly. This must be completed in accordance with the “Cleaning and maintenance” instructions provided.
- Never flame cook food (flambé) under the appliance. Using free flames might cause fire.
- Failure to observe the instructions for cleaning the hood and replacing the filters may result in a fire.
- Exhaust air must not be vented through a flue used for removal of fumes produced by gas combustion appliances or other combustible materials, but must have a separate outlet. All national regulations governing extraction of fumes must be observed.
- There shall be adequate ventilation if the hood is being used at the same time as other appliances using gas or other combustible materials. The negative pressure of the room

must not exceed 4 Pa (4x 10-5 bars). For this reason ensure that the room is well ventilated. In case of doubts, please consult an authorized service assistance center or similar qualified person.


- Do not leave frying pans unattended when frying, as the frying oil may catch fire.
- Before touching the light bulbs, ensure that they are cold.
- Do not use or leave the hood without the light bulb correctly fitted, as this may cause electric shock.
- The hood is not a work surface, therefore do not place any objects on top of it or overload it.
- During all installation and maintenance operations wear appropriate working gloves.
- This appliance is not suitable for outdoor use.

 **WARNING:** when the hob is in use, accessible parts of the hood may become hot.

### Installation and connection

In the event of problems, contact the Authorized Service Centre. To prevent any damage, only remove the appliance from its packaging at the time of installation.

### Preparing for installation

 **WARNING:** this is a heavy product; the hood should only be lifted and installed by two or more people.

The minimum distance between the hob and the bottom part of the hood must not be less than 65 cm for burning gas or other fuels and 50cm for electric cookers.

Before installation also check the minimum distances stated in the manual of the cooker.

If the installation instructions for the cooker specify a greater distance between cooker and hood, this distance must be observed.

### Electrical connection

Make sure the power voltage specified on the appliance rating plate is the same as the mains voltage.

This information can be found on the inside of the hood, under the grease filter. Power cable replacement (type H05 VV-F) must be carried out by a qualified electrician. Contact an authorized service centre.

If the hood is fitted with an electric plug, connect the plug to a socket complying with current regulations, located in an accessible place.

**⚠ WARNING:** if no plug is fitted (direct wiring to the mains), or if the socket is not located in an accessible place, a qualified electrician should install a

standardised double pole power switch that will enable complete isolation from the mains in case of category III overvoltage conditions, in accordance with wiring rules.

## Use

The hood has been designed to be installed and used either as a “Extraction installation”, or as a “Recirculation installation”.

### Extraction installation (see symbol in installation booklet)



Cooking steam is sucked and channelled outside the house through a discharge duct (not supplied), fitted to the hood steam outlet.

Ensure that the discharge duct is correctly fitted to the air outlet, unit using an appropriate connection system.

**Important:** If already installed, remove the charcoal filter/s.

### Recirculation installation

(see symbol  in installation booklet)

The air is filtered through one or more the charcoal filters, and then resent into room.

**Important:** Ensure appropriate air circulation around the hood.

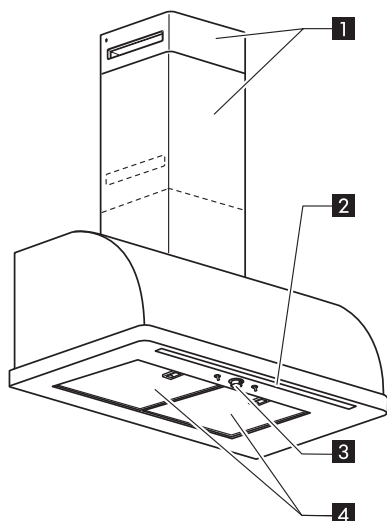
**Important:** If the hood is supplied without charcoal filters, these must be fitted before the hood can be used. Filters are available in IKEA shops.

The hood should be installed away from particularly dirty areas, windows, doors and heat sources.

The accessories for wall fixing are not included because walls made of different materials require different types of fixing accessories. Use fixing systems suitable for the walls of your home and the weight of the appliance. For more details, contact a specialized dealer.

Keep this booklet for future consultation.

## Product description



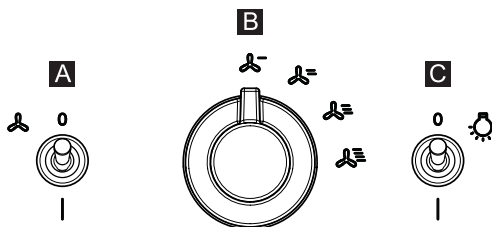
- 1** Chimney.
- 2** LED light.
- 3** Control Panel.
- 4** Grease filter.

## Control panel

- A** Motor ON/OFF toggle switch
- B** Suction (power) speed selector knob
  - Low suction (power) speed
  - Medium suction (power) speed
  - High suction (power) speed
  - Maximum suction (power) speed

**NB:** the hood remains at the same speed when switched ON/OFF using the toggle switch

- C** Light ON/OFF toggle switch



## Cleaning and maintenance

### **WARNING:**

- Never use steam cleaning equipment.
- Disconnect the appliance from the power supply.

**IMPORTANT:** do not use corrosive or abrasive detergents. If any of these products accidentally comes into contact with the appliance, clean immediately with a damp cloth.

- Clean the surfaces with a damp cloth. If it is very dirty, add a few drops of washing up

detergent to the water. Finish off with a dry cloth.

**IMPORTANT:** do not use abrasive sponges or metallic scrapers or scourers. Over time, these can ruin the surface.

- Use detergents specifically designed for cleaning the appliance and follow the manufacturer instructions.

**IMPORTANT:** clean the filters at least monthly to remove any oil or grease residuals.

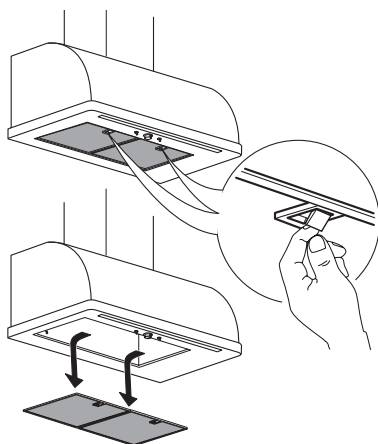


### To clean the grease filter

The metal grease filter has an unlimited life and must be washed once a month by hand or dishwasher at low temperature and with a short cycle. With cleaning in a dishwasher the grease filter may become dull; this does not effect its filtering capacity.

### Grease filter maintenance:

1. Unplug the appliance or disconnect the power supply.
2. Remove the grease filters: pull the spring release handle, then remove the filter downwards.
3. After cleaning the grease filter, remount in reverse order ensuring the entire extraction surface is covered.



### Charcoal filter maintenance (if the hood is installed in recirculation installation)

1. Pull out the plug or disconnect the power supply.
2. Remove the grease filter
3. If the carbon filters are already fitted (two filters that cover the protective grilles for the motor impeller) and have to be replaced, turn the central handle anti-clockwise to unlock them.
4. Open the two filter shells
5. Pull out the two circular mats

6. Proceed in reverse order to fit the new filters.

### 7. Refit the grease filters.

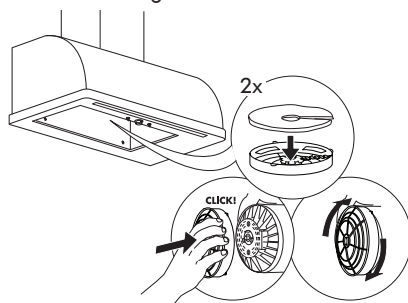
Unlike traditional charcoal filters, this charcoal filter can be washed and reactivated.

Care and cleaning long life Charcoal filter

- The anti-odour filter shall be washed and regenerated every 3-4 months (or more frequently if the hood is subject to intensive use), up to a Max. of 8 regeneration cycles (in case of particularly intensive use it is recommended that you do not exceed 5 cycles).

Regeneration procedure:

- Wash in the dishwasher at a MAX temperature of 70° or hand wash in hot water without using abrasive sponges (do not use detergents!)
- Dry in the oven at a MAX temperature of 70° for 2 hours or dry at room temperature, standing the filter in a vertical position to facilitate drainage.



### Lamp maintenance

The hood is equipped with a lighting system based on LED technology.

The LEDs guarantee an optimum lighting, a duration up to 10 times as long as the traditional lamps and allow to save 90% electrical energy.

For replacement, contact the Authorized Service Centre.

What to do if ...

Problem	Possible cause	Solution
The appliance does not work	There is no mains electrical power	Check for the presence of mains electrical power. Turn off the appliance and restart it to see if the faults persists.
	The appliance is not connected to the electrical supply	Check if the appliance is connected to the electrical supply. Turn off the appliance and restart it to see if the faults persists.
The hood's suction level is not enough	The suction speed is too low	Check the suction speed and adjust as necessary.
	The grease filters are dirty 4	Check that the filters are clean If not, clean the filters in the dishwasher.
	The anti-odors filters are dirty	Check that the anti-odour filters are properly washed as recommended
	The air vents are obstructed	Check the air vents for any obstructions and remove as necessary.
The light does not work	The LED is broken 2	For replacement, contact the Authorized Service Centre.

Before contacting the Authorized Service Centre:

Switch the appliance on again to see if the problem has disappeared. If not, switch it off again and repeat the operation after an hour. If your appliance still does not work properly after carrying out the checks listed in the troubleshooting guide and switching the appliance on again, contact the Authorized Service Centre, clearly explaining the problem and specifying:

- the type of fault;
- the model;
- the type and serial number of the appliance (given on the rating plate);
- the Service number (the number after the word SERVICE on the rating plate inside the appliance).

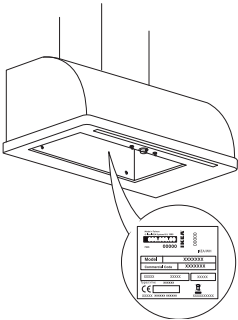
SERVICE 0000 000 00000



Technical data


Type of product		Wall mounted hood	
Dimensions	Width	mm	798
	Depth	mm	498
	Total height in extraction installation version min-max	mm	756-1023
	Total height in recirculation installation version min-max	mm	756-1095
Total power		W	257
Lamps info	Type		LED
	Number & Power	W	1X7
	Socket		STRIP LED
Installation minimum height - gas hob		mm	650
Installation minimum height - elec hob		mm	500
Product Weight		Kg	18
Product Information compliant to commission regulation (EU) No 65/2014 - UK SI 2019 No.539			
Model identifier			FULLSTÄNDIG 60527018
Annual Energy Consumption - AEC Hood		kWh/A	36.9
Energy Efficiency Class			A+
Fluid Dynamic Efficiency FDE Hood		%	35.4
Fluid Dynamic Efficiency Class			A
Light Efficiency - LE Hood		lux/W	60.1
Light Efficiency Class		lux	A
Grease Filtering efficiency Hood - GFE Hood		%	85.1
Grease Filtering efficiency Class			B
Minimum Airflow in normal use		m³/h	280.0
Maximum Airflow in normal use		m³/h	640.0
Air Flow at intensive/boost setting		m³/h	NA
A-Weighted Sound Power Emission at minimum speed		db(A) re 1pW	46.0
A-Weighted Sound Power Emission at maximum speed		db(A) re 1pW	65.0
A-Weighted Sound Power Emission at Intensive or boost speed		db(A) re 1pW	NA
Power consumption off mode-P0		W	0.49
Power consumption in stand by mode -Ps		W	NA
Product Information compliant to commission regulation (EU) No 66/2014			
Time increase factor - f			0.7
Energy efficiency index - EEIhood			42.1
Measured airflow rate at best efficiency point -QBEP		m³/h	345.0
Measured air pressure at best efficiency point -PBEP		Pa	460.0
Maximum Airflow - Qmax		m³/h	-
Measured electric power input at best efficiency point - WBEP		W	124.5
Nominal Power of the lighting system - WL		W	7.0
Average illumination of the lighting system on the cooking surface - Emiddle		lux	421.0

The technical information is situated in the rating plate on the internal side of the appliance.




## Environmental concerns

### Disposal of packing

The packing material is 100% recyclable and is marked with the recycle symbol . The various parts of the packing must therefore be disposed of responsibly and in full compliance with local authority regulations governing waste disposal.

### Scrapping the product

- This appliance is marked in compliance with European Directive 2012/19/EU, Waste Electrical and Electronic Equipment (WEEE).
- By ensuring this product is disposed of correctly, you will help prevent potential negative consequences for the environment and human health, which could otherwise be caused by inappropriate waste handling of this product.

The symbol  on the product or on the accompanying documentation indicates that it should not be treated as domestic waste but must be taken to an appropriate collection centre for the recycling of electrical and electronic equipment.

### Scrapping of household appliances

- This appliance is manufactured with recyclable or reusable materials. Dispose of it in accordance with local waste disposal regulations. Before scrapping, cut off the power supply cable.
- For further information on the treatment, recovery and recycling of household electrical appliances, contact your competent local authority, the collection service for household waste or the store where you purchased the appliance.

### Energy saving tips

- Switch ON the hood at minimum speed when you start cooking and kept it running for few minutes after cooking is finished.
- Increase the speed only in case of large amount of smoke and vapour and use boost speed(s) only in extreme situations.
- Replace the charcoal filter(s) when necessary to maintain a good odour reduction efficiency.
- Clean the grease filter(s) when necessary to maintain a good grease filter efficiency.
- Use the maximum diameter of the ducting system indicated in this manual to optimize efficiency and minimize noise.

### Declaration of conformity

This appliance has been designed, manufactured and marketed in compliance with:

- safety objectives of the “Low Voltage” Directive 2014/35/EU;
- the eco design requirements of european regulations n. 65/2014, and n. 66/2014 in conformity to the european standard en 61591;
- the protection requirements of Directive “EMC” 2014/30/EU.

Electrical safety of the appliance can only be guaranteed if it is correctly connected to an approved earthing system.

## IKEA GUARANTEE

### **Do you need extra help?**

For any additional questions not related to After Sales of your appliances, like clarifications on installation of the IKEA appliance in the dedicated IKEA kitchen furniture or for clarification on functions of the IKEA appliances, please contact your nearest IKEA Customer Support Centre, the number is available on [www.IKEA.com](http://www.IKEA.com). We recommend you read the appliance documentation carefully before contacting us.

For information on what is included and excluded under the guarantee, read about our guarantee terms on [www.ikea.com](http://www.ikea.com).

For requests under this guarantee, do not hesitate to contact the IKEA appointed Authorized Service Centre. See the relative national phone numbers on the next page.

For quicker service, always refer to the IKEA article number (8-digit code) and the 12-digit service number found on the rating plate of your appliance.

**SAVE THE SALES RECEIPT.**

**BELGIË - BELGIQUE - BELGIEN**

Téléfoon/Numéro de téléphone/Telefon-Nummer: 026200311  
 Tarief/Tarif/Tariff: Lokaal tarief/Prix d'un appel local/Ortstarif  
 Openingstijd: Maandag - Vrijdag 8.00 - 20.00  
 Heures d'ouverture: Lundi - Vendredi 8.00 - 20.00  
 Öffnungszeiten: Montag - Freitag 8.00 - 20.00

**БЪЛГАРИЯ**

Телефонен номер: 02 4003536  
 Тарифа: Локална тарифа  
 Работно време: понеделник - петък 8.00 - 20.00

**ČESKÁ REPUBLIKA**

Telefonní číslo: 225376400  
 Sazba: Místní sazba  
 Pracovní doba: Pondělí - Pátek 8.00 - 20.00

**DANMARK**

Telefonnummer: 70150909  
 Takst: Lokal takst  
 Åbningstid: Mandag - fredag 9.00 - 20.00  
 Lørdag 9.00 - 18.00  
 (Åbent udvalgte søndage, se IKEA.dk)

**DEUTSCHLAND**

Telefon-Nummer: 06929993602  
 Tarif: Ortstarif  
 Öffnungszeiten: Montag - Freitag 8.00 - 20.00

**ΕΛΛΑΔΑ**

Τηλεφωνικός αριθμός: 2109696497  
 Χρέωση: Τοπική χρέωση  
 Ώρες λειτουργίας: Δευτέρα - Παρασκευή 8.00 - 20.00

**ESPAÑA**

Teléfono: 913754126 (España Continental)  
 Tarifa: Tarifa local  
 Horario: Lunes - Viernes 8.00 - 20.00

**EESTI**

<http://www.ikea.com>

**FRANCE**

Numéro de téléphone: 0170480513  
 Tarif: Prix d'un appel local  
 Heures d'ouverture: Lundi - Vendredi 9.00 - 21.00

**HRVATSKA**

Broj telefona: 0800 3636  
 Tarifa: Lokalna tarifa  
 Radno vrijeme: Ponedjeljak - Petak 8.00 - 20.00

**ÍSLAND**

Símanúmer: 5852409  
 Kostnaður við símtal: Almennt mínútuverð  
 Opnunartími: Mánudaga - Föstudaga 9.00 - 17.00

**ITALIA**

Telefono: 0238591334  
 Tariffa: Tariffa locale  
 Orari d'apertura: Lunedì - Venerdì 8.00 - 20.00

**LATVIJA**

<http://www.ikea.com>

**LIETUVIJA**

Telefono numeris: (0) 520 511 35  
 Skambučio kaina: Vietos mokestis  
 Darbo laikas: Nuo pirmadienio iki penktadienio 8.00 - 20.00

**LUXEMBOURG**

Numéro de téléphone: 035220882569  
 Tarif: Prix d'un appel local  
 Heures d'ouverture: Lundi - Vendredi 8.00 - 18.00

**MAGYARORSZÁG**

Telefon szám: (06-1)-3285308  
 Tarifa: Helyi tarifa  
 Nyitvatartási idő: Hétfőtől Péntekig 8.00 - 20.00

**NEDERLAND**

Telefoon: 0900-235 45 32 en/of 0900 BEL IKEA  
 0031-50 316 8772 international  
 Tarief: Geen extra kosten. Alleen lokaal tarief.  
 Openingstijd: Maandag t/m - Vrijdag 8.00 - 21.00  
 Zaterdag 9.00 - 21.00  
 Zondag / Feestdagen 10.00 - 18.00

**NORGE**

Telefon nummer: 23500112  
 Takst: Lokal takst  
 Åpningstider: Mandag - fredag 8.00 - 20.00

**ÖSTERREICH**

Telefon-Nummer: 01360 2771461  
 Tarif: Ortstarif  
 Öffnungszeiten: Montag - Freitag 8.00 - 20.00

**POLSKA**

Numer telefonu: 225844203  
 Stawka: Koszt połączenia według taryfy operatora  
 Godziny otwarcia: Poniedziałek - Piątek 8.00-20.00

**PORTUGAL**

Telefone: 213164011  
 Tarifa: Tarifa local  
 Horário: Segunda - Sexta 9.00 - 21.00

**REPUBLIC OF IRELAND**

Phone number: 016590276  
 Rate: Local rate  
 Opening hours: Monday - Friday 8.00 - 20.00

**ROMÂNIA**

Număr de telefon: 021 2044888  
 Tarif: Tarif local  
 Orar: Luni - Vineri 8.00 - 20.00

**РОССИЯ**

Телефонный номер: 84957059426  
 Стоимость звонка: Местная стоимость звонка  
 Время работы: Понедельник - Пятница 9.00 - 21.00  
 (Московское время)

**SCHWEIZ - SUISSE - SVIZZERA**

Telefon-Nummer/Numéro de téléphone/Telefono: 0225675345  
 Tarif/Tarif/Tariffa: Ortstarif/Prix d'un appel local/Tariffa locale  
 Öffnungszeiten: Montag - Freitag 7.30-12.00/13.00-17.30  
 Heures d'ouverture: Lundi - Vendredi 7.30-12.00/13.00-17.30  
 Orario d'apertura: Lunedì - Venerdì 7.30-12.00/13.00-17.30

**SLOVENSKO**

Telefónne číslo: (02) 50102658  
 Cena za hovor: Cena za miestny hovor  
 Pracovná doba: Pondelok až piatok 8.00 - 20.00

**SLOVENIJA**

<http://www.ikea.com>

**SRBIJA**

Broj telefona: 011 7 555 444  
 stopa: lokalna kurs  
 Radno vreme: Ponedeljak - subota 9.00 - 20.00  
 nedelja 9.00 - 18.00

**SUOMI**

Puhelinnumero: 0981710374  
 Hinta: Yksikköhinta  
 Aukioloaika: Maanantaista perjantaihin 8.00 - 20.00

**SVERIGE**

Telefon nummer: 0775-700 500  
 Taxa: Lokal samtal  
 Öppet tider: Måndag - Fredag 8.30 - 20.00  
 Lördag - Söndag 9.30 - 18.00

**UNITED KINGDOM**

Phone number: 02076601517  
 Rate: Local rate  
 Opening hours: Monday - Friday 8.30am - 6.30pm  
 Saturday 8.30am - 5.30pm  
 Sunday 9.30am - 3.30pm



