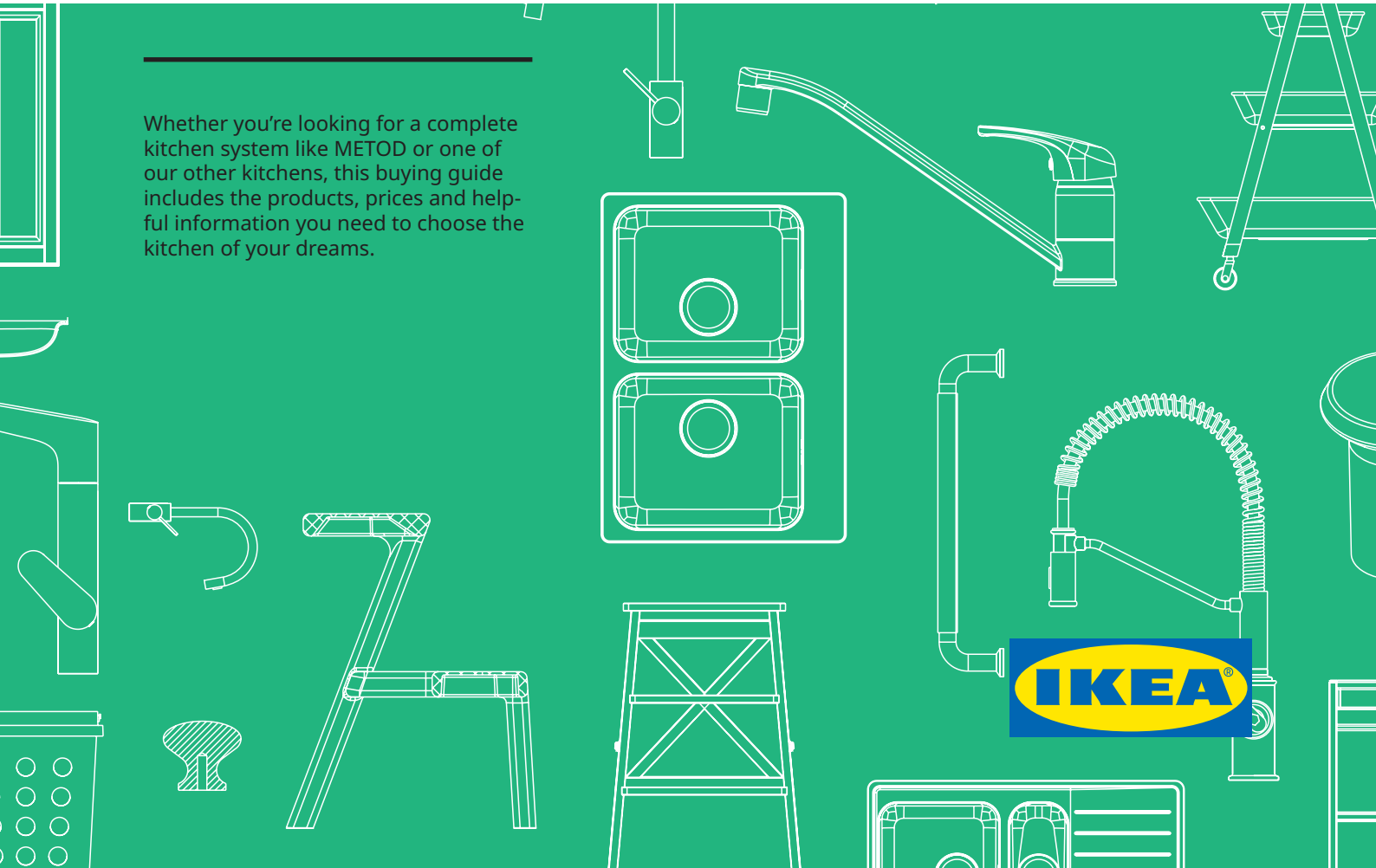




A guide to buying
IKEA kitchens

IKEA Kitchens

Whether you're looking for a complete kitchen system like METOD or one of our other kitchens, this buying guide includes the products, prices and helpful information you need to choose the kitchen of your dreams.





Sinks and taps.
See page 100



Working in your kitchen is safer, easier and a lot more enjoyable with good lighting on the worktop, behind glass doors and in drawers.
See page 66

Table of contents

Services	04	Sinks	100
IKEA Kitchens.....	06	Kitchen taps.....	108
METHOD kitchen system	08	Kitchen organisers.....	114
Doors and drawer fronts	10	Knobs and handles	124
Materials.....	14	Kitchen accessories	128
Cover panels, decorative strips, plinths and legs	28	Guarantee	138
METHOD cabinets	42	Steps to buying an IKEA kitchen	140
METHOD interior fittings and organisers	48		
KNOXHULT kitchen	56		
Kitchenettes	62		
Lighting and home electronics	66		
Worktops	76		
Wall panels.....	94		



You can do everything yourself, but you don't have to. With our broad service offer we can assist you with everything from measuring and planning to complete kitchen installation.
See page 04



A kitchen island is a great social hub, while giving you extra work space. The worktop of VADHOLMA kitchen island has a durable top layer of oak wood and can handle everything from baking muffins to playing family games.
See page 128

Life in the kitchen goes a lot smoother when your drawers open up fully to help you reach everything. With interior fittings and organisers inside cabinets and drawers, finding what you're looking for will be easy-peasy.
See page 114

Services

Our broad service offer gives you the freedom to decide how much you want to do yourself and how much you want us to do for you.

Below you'll find all the services that we can offer.



Kitchen planning

Get help with the planning of your new kitchen, by booking an appointment with one of our kitchen specialists. Bring the measurements and a drawing, or picture, of the area and we will help you with functional solutions for everything from the placement of cabinets and appliances, to storage, lighting and sinks.



Measuring

If you prefer, we measure the room and check everything, from the placement of windows, doors and power sockets to the material and condition of the walls.



Delivery

Whether you're shopping in store or online, and no matter how big the purchase, we'll do the heavy lifting and bring it to your home or business. We deliver on a day and at a time that suits you.



Kitchen installation

IKEA kitchen installation service gets your dream kitchen up and running as fast as possible – so you can start making your favourite recipes and new memories. Save yourself valuable time while trusted professionals finish your kitchen for you.



Payment options

We accept many payment methods, including cards and cash. And if you need a little longer to settle your bill, we can help you spread the cost.

**You can do it yourself,
but you don't have to**



What type of kitchen are you looking for?

Whether you're looking for a complete kitchen system like METOD that you can personalise any way you want, or a simpler kitchen that you can install in a day, we have what you're looking for. Here you have four different types of IKEA kitchens to suit different needs and wishes.



METOD kitchen system

Our METOD kitchen system includes cabinets in several different sizes to fit your room layout as well as your kitchen habits. The flexibility of the system offers endless of choices, giving you the freedom to customise a kitchen that's ideal for you and your space. We've also developed an extensive range of kitchen organisers and interior fittings allowing you to quickly see and reach even the things furthest back in the corner cabinets. In addition you have a vast choice in front expressions, worktops, lighting, sinks, taps, knobs, handles and much more to personalise every inch of your kitchen.

See page 08.

KNOXHULT kitchen

KNOXHULT kitchen units make it easy to create a practical kitchen. The selection of units in different shapes and sizes come with pre-coordinated front and worktop and offer smart storage that help you stay organised, so all you have to do is combine them to suit your needs, space and preferences. When you're happy with the result, personalise with your favourite sink, tap, appliances, knobs or handles and lighting to get a kitchen that works for you. **See page 56.**



Kitchenettes

Not everyone has the space for a larger, built-in kitchen. Whether you're after a permanent or temporary solution, our range of kitchenettes delivers all the essentials in smart, compact designs. Choose from basic or modern styles and customise your space with TILLREDA appliances to fit your needs. It's all there, personal, functional and easy to install – and when you move, you can take your kitchenette with you. Simple as that. **See page 62.**



METHOD kitchen system

Endless possibilities

The flexible design of METOD kitchen system is easy to install and gives you endless of possibilities when designing your kitchen. Whether you have a taste for the traditional, love the minimalism in modern style or land somewhere in between, you'll surely find something that fits you.

To become truly beautiful, the kitchen has to be functional and take care of all your kitchen needs, too. With METOD you have the freedom to get the look you want on the outside and keep everything in perfect order on the inside. Start by deciding the

style of your dream kitchen by choosing the doors and drawer fronts, lighting, worktop, sink, tap, knobs, handles and accessories that you like.

25

The METOD kitchen system has a 25-year guarantee. Find out more on page 138.





METOD doors and drawer fronts

Choose your style!

No matter what your personal style and preference is, make sure to choose a kitchen front you will love for years to come. It is the face of your kitchen, and most likely you will spend many hours in it.

We have a wide range of materials and finishes to choose from to suit your style – no matter what you like! Everything from traditional doors and drawer fronts that are rich in details, to high-gloss and

modern doors and drawer fronts with integrated handles to give you that open clean look – we have it!

The process of choosing the style of your kitchen is all up to you, go for whatever you like – it is your kitchen! We have made sure that all our fronts are durable and of high quality. They all come with a 25-year guarantee to ensure, that whatever you choose it will last for years to come.

25

Kitchen doors have a
25-year guarantee.
Find out more on page 138





100001
100002
100003
100004
100005
100006
100007
100008
100009
100010

Door and drawer front styles



Slab fronts

Slab doors offers you straight lines and smooth, easy to clean surfaces, simplicity in its truest form. Choose from a wide variety of finishes, colours and materials.



Shaker fronts

Shaker fronts are rich in detail, with a crafted look and feel -they create a kitchen with a rustic and traditional look. All our frame door families have a matching glass door.



High-gloss fronts

Glossy surfaces suit everyone from the minimalist to the wild family with kids. Stains are no problem as they are just as easy to wipe clean as they were to make.



J-Pull fronts

You might not notice them at first glance – and that's the idea! Integrated handles lend a minimalistic and modern feeling to your kitchen.

Material for kitchen fronts

Kitchen fronts that suit you

Are you looking for a completely new kitchen or are you going to update your existing one? Regardless, we want to help you choose the best kitchen fronts for you and your home. Material, surface treatment and appearance affect your fronts and before you choose, it may be good to think about a few things. What style, colours and patterns do you like? And what are your requirements when it comes to durability, and maintenance? Here we summarise the features and advantages that IKEA kitchen fronts have. All fronts have a 25-year guarantee, so you can be sure to enjoy them for a long time.



Wood – warm and unique

Real wood has a warm and natural expression. Massive wood and wood veneer has its own unique look, since the grain and pattern are different from plank to plank, giving your kitchen a vibrant and natural feel. The colour of the wood deepens and becomes richer over time – and if you take care of your fronts, they will stay beautiful for a long time. The surface can be varnished with clear lacquer, oiled, stained or left untouched to maintain the natural expression.

- + Sturdy and solid.
- + Can be oiled and stained.
- + Colour deepens with time.
- + Unique expression



Stainless steel – durable and professional

Stainless steel is a very durable material. It is an elegant, attractive, and modern material that has stood the test of time and maintained its popularity year after year. Stainless steel fronts give the feeling of a professional restaurant kitchen. It is beautiful in its own right and complements other materials and colours well. Stainless steel is easy to manufacture from recycled metal – and to recycle again.

- + Very resistant to grease, dirt, water, heat and chemicals.
- + Gives your kitchen a professional feeling.
- + Easy to clean and maintain.



Foil – easy-care and versatile

With foil coating, kitchen fronts can have many different expressions – everything from a matte or high-gloss surface to embossed effects and a wide choice of colours and patterns. Foil coating is usually produced from a flexible plastic foil, that is heated and cast over particleboard. The result is a front with an even, smooth and durable surface. Foil with an extra-matte finish may need a little more love and care to remove stains.

- + Scratch resistant.
- + Great variation in appearance.
- + Moisture resistant.
- + The colour does not fade over time.



Lacquered - many colours and a smooth surface

We have lacquered fronts in many different colours, so you can choose one that suits your home best. Lacquered fronts do not need an edging strip, and have a uniform colour and texture over the entire front. They can also be painted or re-varnished in new shades, making it easy to update your kitchen and extend the life of the fronts. Lacquered fronts are produced by spraying paint over compact particleboard. The paint is applied very evenly over the board, and the surface is smooth and easy to wipe dry.

- + Uniform colour and texture over the entire front.
- + Can be repainted.
- + Easy to clean.



Tempered glass – strong and decorative

With glass doors, you can display your favourite objects and add lighting to the cabinet for an extra-cosy touch. The glass in the door is industrially tempered glass, which is a stronger and safer type of glass. It can withstand heavier weight and better resist scratches. If the glass does break, it breaks into smaller and more harmless pieces than ordinary non-tempered glass.

- + Stronger than ordinary glass.
- + Easy to clean.
- + The glass gives a sense of the contents in the cabinet and evokes interest.
- + Combine with lighting in the cabinet for an extra-cosy touch



Melamine laminate – durable and easy-care

Laminate offers a lot of possibilities in terms of shape and colour, while at the same time it has a very smooth, hardwearing and durable surface that does not fade over time and is easy to clean. Melamine laminate comprises of an impregnated paper sheet that is pressed together with glue and fixed in place on a particleboard. The edgeband can be made of plastic or wood.

- + Scratch resistant.
- + Easy to clean.
- + Moisture resistant.
- + The colour does not fade over time

Slab fronts



ASKERSUND

Colour/design: light ash effect.

Material: particleboard and melamine foil finish.

ASKERSUND is a blonde ash wood effect door, with a grain pattern that you can see and feel. It creates a light, modern kitchen. Complement with HEJSTA clear glass door.

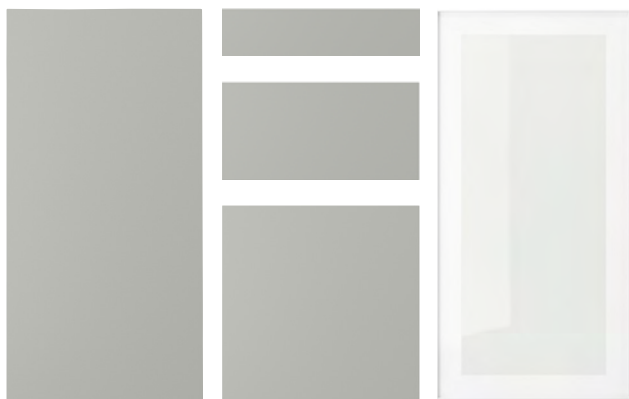
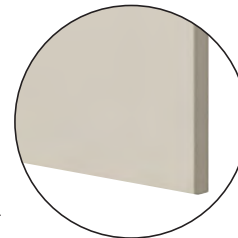


HAVSTORP

Colour/design: beige.

Material: fiberboard and painted finish.

HAVSTORP beige is a smooth, sleek door that brings a bright and modern expression to your kitchen. Complement with HEJSTA clear glass door.

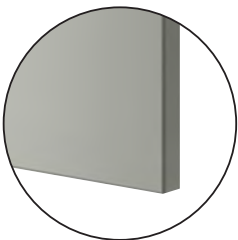


HAVSTORP

Colour/design: light grey.

Material: fibreboard and painted finish.

HAVSTORP kitchen fronts in timeless light grey finish are defined by clean straight lines and smooth surface that create a neutral and harmonious expression that is easy to personalise.

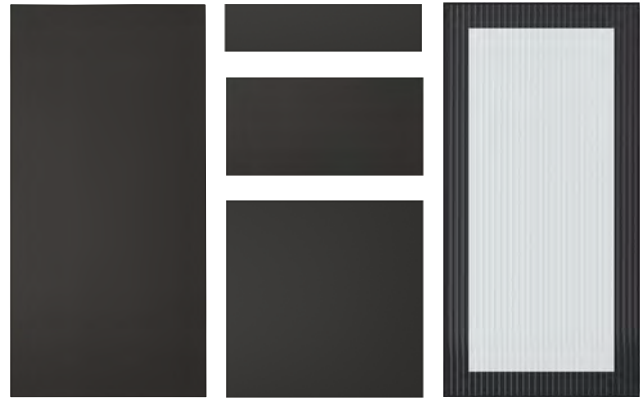
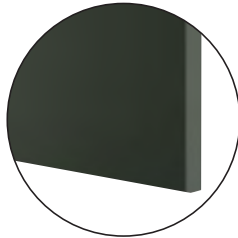




HAVSTORP

Colour/design: deep green.
Material: fiberboard and painted finish.

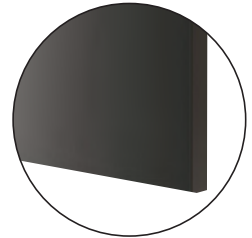
HAVSTORP series in a deep green tone is defined by clean straight lines and a smooth surface. The expression is a confident choice for your unique style that you will love coming home to every day. Complement with HEJSTA reeded glass door.



NICKEBO

Colour/design: matt anthracite.
Material: particleboard and foil finish.

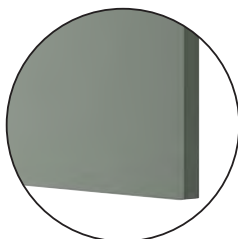
NICKEBO fronts with matt black surface create a stylish and modern look. A simple design that you can make your own. Made from recycled wood with a foil finish from mainly recycled plastic. Complement with HEJSTA reeded glass door.



NICKEBO

Colour/design: Matt grey-green.
Material: Particleboard and foil finish.

NICKEBO fronts in timeless grey-green have clean straight lines and a smooth, matt surface made of durable foil. The simple design feels modern and harmonious and is easy to personalise. Complement with HEJSTA clear glass door.



SINARP

Colour/design: brown.
Material: clear lacquered oak veneer and solid oak.

SINARP offers a timeless design with a modern twist, in dark wood tones that are full of character. The solid oak edging elegantly outlines the front adding fine detail and warmth to your kitchen. Complement with HEJSTA reeded glass door.



Slab fronts



SINARP

Colour/design: oak veneer.

Material: clear lacquered oak veneer and solid oak.

SINARP fronts offer a timeless design with a modern twist, in natural oak veneer with wooden tones full of character. Solid oak edging outlines the front, adding elegant detail to your kitchen. Complement with HEJSTA reeded glass door.

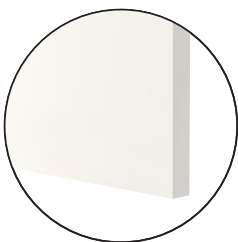


VALLSTENA

Colour/design: white.

Material: particleboard and foil finish.

Simplicity at its best! VALLSTENA kitchen fronts have a smooth clean surface that is easy to coordinate and easy to like. A timeless expression that always feels right. Complement with HEJSTA clear glass door.



VEDDINGE

Colour/design: white.

Material: fibreboard and painted finish.

VEDDINGE white is a smooth, sleek door that gives your kitchen a bright, modern look. Complement with HEJSTA clear glass door.



Shaker fronts

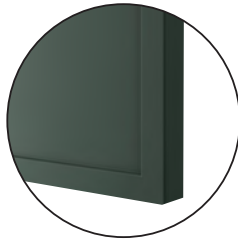


New

ASPUDDEN

Colour/design: dark grey-green
Material: particleboard and foil finish.

The elegant thin frame on ASPUDDEN fronts enhances the minimalist appeal, offering a timeless look with a subtle statement. The dark grey-green finish creates a warm and welcoming kitchen expression.

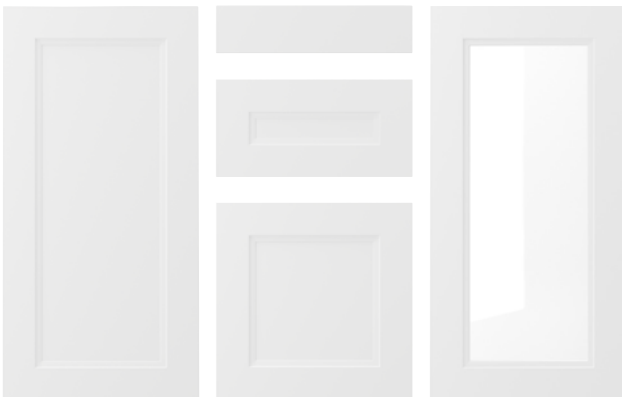


New

ASPUDDEN

Colour/design: light grey
Material: particleboard and foil finish.

The elegant thin frame on ASPUDDEN fronts enhances the minimalist appeal, offering a timeless look with a subtle statement. The light grey finish brings a calm and inviting feel to your kitchen.



AXSTAD

Colour/design: matt white.
Material: fibreboard and foil finish.

AXSTAD door has a matt, white surface with soft lines and an inset panel. The design allows you to use it to create both a modern and traditional kitchen. Complement with AXSTAD tempered glass doors.



AXSTAD

Colour/design: grey-green
Material: Fibreboard and foil finish.

AXSTAD door has a matt, grey-green surface with soft lines and an inset panel. The design allows you to use it to create both a modern and traditional kitchen. Complement with AXSTAD tempered glass doors.



Shaker fronts



BODBYN

Colour/design: black.
Material: fibreboard and painted finish.

A classic expression in striking black with bevelled panels that create a traditional character with a warm and welcoming feel. BODBYN fronts are easy to keep clean thanks to the smooth lacquered surface. Complement with BODBYN tempered glass doors.



BODBYN

Colour/design: off-white.
Material: fibreboard and painted finish.

Rich in detail, BODBYN off-white door has a panel that is bevelled on the inside and contoured on the outside. It gives your kitchen a traditional touch. Complement with BODBYN tempered glass doors.



ENKÖPING

Colour/design: white wood effect.
Material: Fibreboard and foil finish.

A classic look in white that feels inviting and will outlast the test of time. ENKÖPING framed fronts are covered in durable foil with a subtle grain structure that gives an authentic, warm wood character.





FORSBACKA

Colour/design: oak.
Material: tinted oak veneer and solid oak.

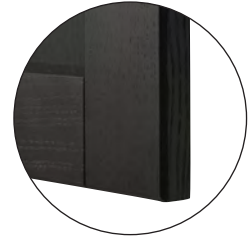
FORSBACKA kitchen fronts in warm oak veneer welcome you and make you feel right at home. The framed door with bevelled edges creates a classic, traditional character.



LERHYTTAN

Colour/design: black stained.
Material: Stained, clear lacquered solid wood and wood veneer.

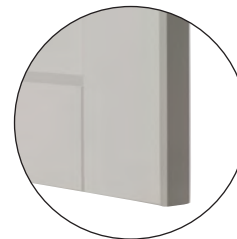
LERHYTTAN door has a distinct traditional character, with a solid wood frame with bevelled edges and an inset veneer panel. LERHYTTAN creates a cosy kitchen with rustic charm. Complement with LERHYTTAN tempered glass doors.



LERHYTTAN

Colour/design: light grey.
Material: Tinted, clear lacquered solid wood and wood veneer.

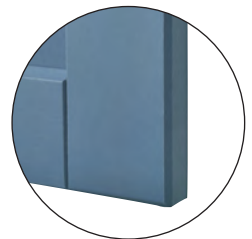
LERHYTTAN door has a distinct traditional character, with a solid wood frame with bevelled edges and an inset veneer panel. LERHYTTAN creates a cosy kitchen with rustic charm. Complement with LERHYTTAN tempered glass doors.



LERHYTTAN

Colour/design: blue.
Material: Tinted, clear lacquered solid wood and wood veneer.

LERHYTTAN door has a distinct traditional character, with a solid wood frame with bevelled edges and an inset veneer panel. LERHYTTAN creates a cosy kitchen with rustic charm. Complement with LERHYTTAN tempered glass doors.



Shaker fronts



STENSUND

Colour/design: white.

Material: fibreboard and painted finish.

STENSUND series offers a touch of country living with framed fronts and grooved panels that create a warm, crafted look. Complement with STENSUND tempered glass doors.



STENSUND

Colour/design: light green.

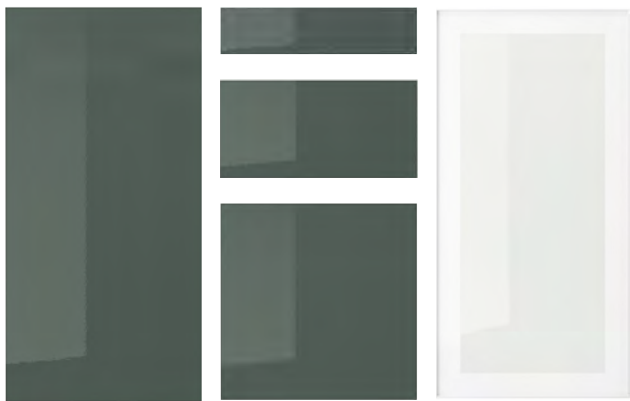
Material: fibreboard and painted finish.

STENSUND series offers a touch of country living with framed fronts and grooved panels that create a warm, crafted look. Complement with STENSUND tempered glass doors.



W400×H800 mm 505.239.16

High-gloss fronts

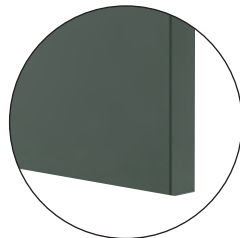


KALLARP

Colour/design: high-gloss dark grey-green

Material: particleboard with high-gloss foil finish.

KALLARP is a high-gloss drawer front with sleek, straight lines and brings a fresh, modern look to your kitchen. Complement with HEJSTA clear glass door.



High-gloss fronts



RINGHULT

Colour/design: high-gloss white.
Material: particleboard and high-gloss foil finish.

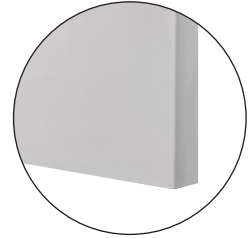
RINGHULT white doors have sleek, straight lines and a high-gloss surface that's durable and easy to clean. RINGHULT brings a bright, modern look to your kitchen.
Complement with HEJSTA clear glass door.



RINGHULT

Colour/design: high-gloss light grey.
Material: particleboard and high-gloss foil finish.

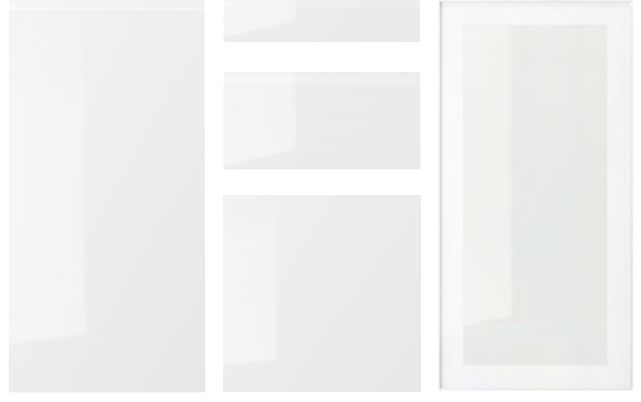
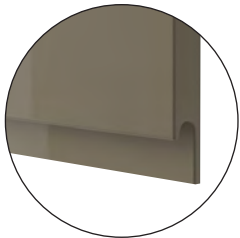
RINGHULT light grey doors have sleek, straight lines and a high-gloss surface that's durable and easy to clean. RINGHULT brings a bright, modern look to your kitchen.
Complement with HEJSTA clear glass door.



VOXTORP

Colour/design: high-gloss dark grey-brown.
Material: fibreboard and high-gloss foil finish.

VOXTORP is a smooth, high-gloss door with integrated handles. It brings clean lines and an open, modern look to your kitchen.
Complement with HEJSTA clear glass door.



VOXTORP

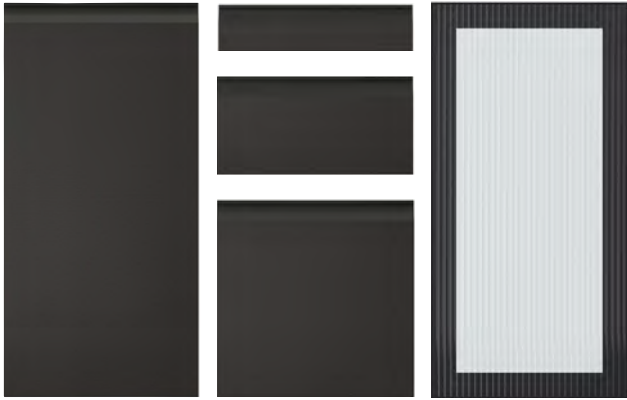
Colour/design: high-gloss white.
Material: fibreboard and high-gloss foil finish.

VOXTORP is a smooth, high-gloss door with integrated handles. It brings clean lines and an open, modern look to your kitchen.
Complement with HEJSTA clear glass door.



W400×H800 mm 605.817.60

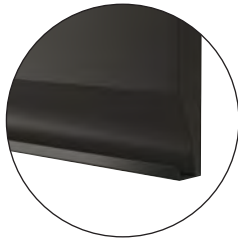
J-Pull fronts



UPPLÖV

Colour/design: matt anthracite.
Material: Particleboard with foil finish and aluminium.

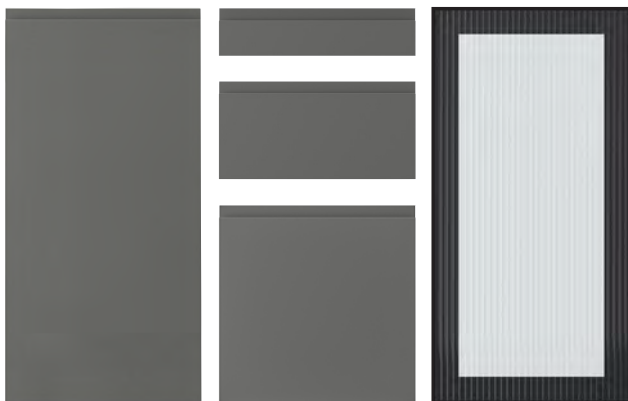
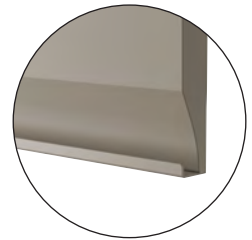
UPPLÖV kitchen fronts in matt black offer a modern and sophisticated look enhanced with chamfered edges and same-tone integrated handles. Elegant and graphic details that feel sleek through and through. Complement with HEJSTA reeded glass door.



UPPLÖV

Colour/design: matt dark beige.
Material: Particleboard with foil finish and aluminium.

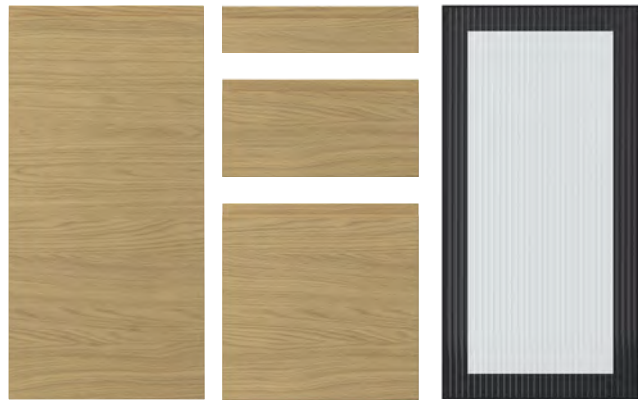
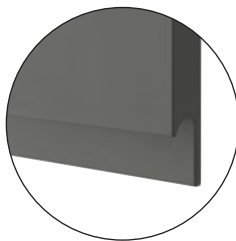
UPPLÖV kitchen fronts in matt beige offer a modern and sophisticated look enhanced with chamfered edges and same-tone integrated handles. Elegant and graphic details that feel sleek through and through. Complement with HEJSTA clear glass door.



VOXTORP

Colour/design: dark grey.
Material: particleboard and foil finish.

VOXTORP is a smooth door with integrated handles. It brings clean lines and an open, modern look to your kitchen. Complement with HEJSTA reeded glass door.

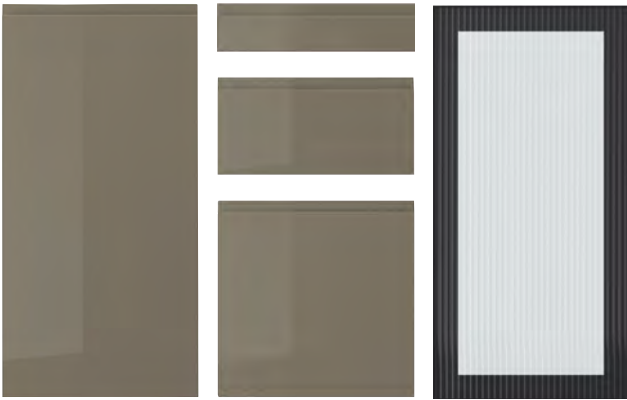


VOXTORP

Colour/design: oak effect.
Material: particleboard and foil finish.

VOXTORP is an oak effect door with integrated handles. It brings clean lines and an open, warm and modern look to your kitchen. Complement with HEJSTA reeded glass door.





VOXTORP

Colour/design: high-gloss dark grey-brown.
Material: fibreboard and high-gloss foil finish.

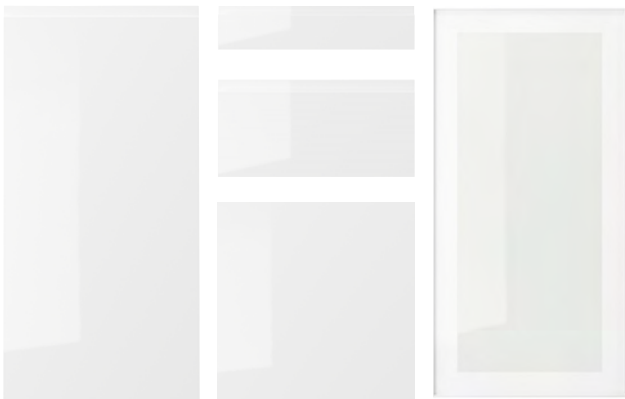
VOXTORP is a smooth, high-gloss door with integrated handles. It brings clean lines and an open, modern look to your kitchen.
 Complement with HEJSTA clear glass door.



VOXTORP

Colour/design: matt white.
Material: particleboard and foil finish.

VOXTORP is a smooth, matt door with integrated handles. It brings clean lines and an open, modern look to your kitchen.
 Complement with HEJSTA clear glass door.



VOXTORP

Colour/design: high-gloss white.
Material: fibreboard and high-gloss foil finish.

VOXTORP is a smooth, high-gloss door with integrated handles. It brings clean lines and an open, modern look to your kitchen.
 Complement with HEJSTA clear glass door.

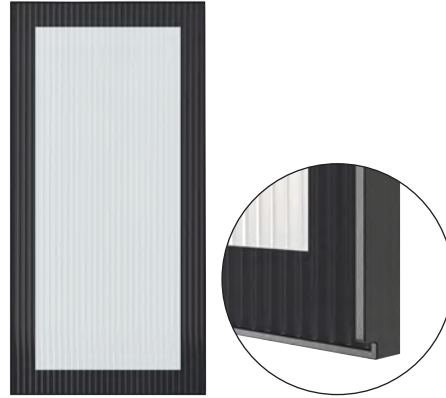


Glass doors



HEJSTA
Colour/design: white/clear glass.
Material: Aluminium and tempered glass.

Create a personal and inviting feeling with HEJSTA glass door in white. Show your favourite items and add lighting for ambience. A classic, modern look with metal frame and integrated handle.



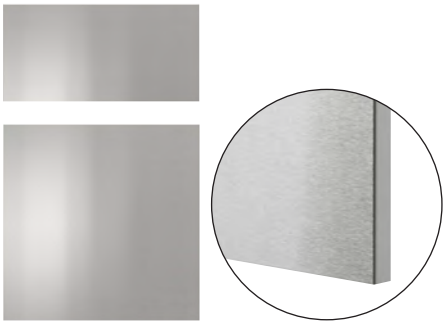
HEJSTA
Colour/design: anthracite /reeded glass.
Material: Aluminium and tempered glass.

Create a personal and inviting feeling with HEJSTA glass door in black. The reeded glass hints at what's inside the cabinet and adds an element of interest. Pairs well with lighting for ambience.

Drawer fronts

Our drawer front families only comes with drawer fronts and no doors. They are designed to complement

the doors in our range and come in a limited amount of sizes.



VÅRSTA
Colour/design: stainless steel.
Material: particleboard and stainless steel

VÅRSTA fronts made with hardwearing, stainless steel bring an industrial, restaurant feel into your kitchen and will inspire the chef inside of you to whip up many marvellous meals just like a pro.



FRÖJERED
Colour/design: light bamboo.
Material: clear lacquered bamboo.

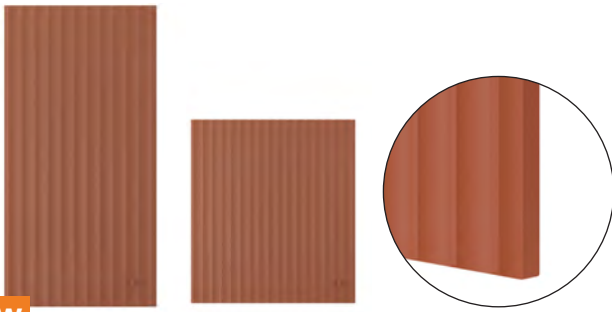
Vibrant and warm with a "wow" feel. FRÖJERED fronts are made of natural bamboo – a sustainable and hard-wearing material that's perfect in the kitchen. Integrated handles enhance the clean, modern look.



STENSTA
Colour/design: dark brown ash veneer.
Material: Stained ash veneer and solid beech.

STENSTA kitchen fronts in dark brown stained ash veneer have a vibrant grain pattern matched with solid wood handles stretching across the width of the front to enhance the beautiful linear expression.

Accent Doors



New

TERRSJÖ

Colour/design: red-brown wave pattern
Material: fiberboard and painted finish

TERRSJÖ fronts bring a sense of movement to your kitchen with their playful and eye-catching wavy structure. A warm terracotta glow sets the tone, complemented by matching knobs that complete the look.



METHOD

cover panels, decorative strips, plinths and legs

Add the finishing touches

Whether you've decided to go for a more traditional style with lots of drawers and decorative elements, or a sleek modern, more minimalistic approach, there are still finishing touches for you to add to make your kitchen stunning.

Enhance your style with uniform cover panels, decorative strips, legs and plinths. Or, you can be a bit bold and go for a finish that contrasts with your doors and drawers. It's all up to you.



Cover panels and decorative cover panels

Choose a cover panel in the same finish as your door for a uniform expression, or mix and match to suit your taste.

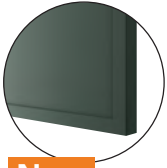
ASKERSUND, light ash effect.



Cover panels

Available sizes, width×height	
39×86 cm	603.318.46
39×106 cm	103.318.44
39×240 cm	803.318.45
62×80 cm	003.318.49
62×220 cm	403.318.47
62×240 cm	203.318.48

ASPUDDEN, dark grey-green.



New

Cover panels

Available sizes, width×height	
39×81 cm	005.953.50
39×101 cm	405.953.48
39×240 cm	205.953.49
62×80 cm	405.953.53
62×220 cm	805.953.51
62×240 cm	605.953.52

Decorative cover panels (only to be used on base cabinets).

39×80 cm	705.950.64
62×80 cm	405.950.65

ASPUDDEN, light grey.



New

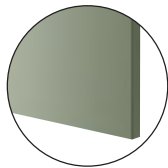
Cover panels

Available sizes, width×height	
39×81 cm	205.950.28
39×101 cm	605.950.26
39×240 cm	405.950.27
62×80 cm	605.950.31
62×220 cm	005.950.29
62×240 cm	805.950.30

Decorative cover panels (only to be used on base cabinets).

39×80 cm	305.953.82
62×80 cm	105.953.83

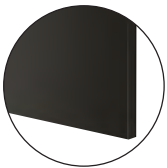
AXSTAD, grey-green.



Cover panels

Available sizes, width×height	
39×86 cm	405.639.22
39×106 cm	805.639.20
39×240 cm	605.639.21
62×80 cm	705.639.25
62×220 cm	205.639.23
62×240 cm	005.639.24

BODBYN, black.



Cover panels

Available sizes, width×height	
39×86 cm	605.685.70
39×106 cm	005.685.68
39×240 cm	805.685.69
62×80 cm	005.685.73
62×220 cm	405.685.71
62×240 cm	205.685.72

ENKÖPING, white wood effect.



Cover panels

Available sizes, width×height	
39×83 cm	205.057.54
39×103 cm	605.057.52
39×240 cm	405.057.53
62×80 cm	505.057.57
62×220 cm	905.057.55
62×240 cm	705.057.56

FORSBACKA, oak.



Cover panels

Available sizes, width×height	
39×83 cm	705.652.22
39×105 cm	105.652.20
39×240 cm	905.652.21
62×80 cm	305.652.24
62×220 cm	005.653.29
62×240 cm	505.652.23

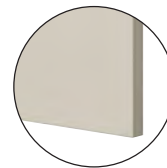
FRÖJERED, light bamboo.



Cover panels

Available sizes, width×height	
39×80 cm	104.416.25
62×80 cm	904.416.31

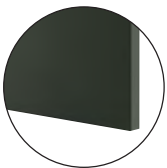
HAVSTORP, beige.



Cover panels

Available sizes, width×height	
39×86 cm	504.752.51
39×106 cm	904.752.49
39×240 cm	704.752.50
62×80 cm	304.752.85
62×220 cm	104.752.53
62×240 cm	904.752.54

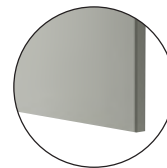
HAVSTORP, deep green.



Cover panels

Available sizes, width×height	
39×86 cm	205.683.60
39×106 cm	605.683.58
39×240 cm	405.683.59
62×80 cm	605.683.63
62×220 cm	005.683.61
62×240 cm	805.683.62

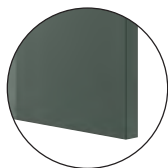
HAVSTORP, light grey.



Cover panels

Available sizes, width×height	
39×86 cm	705.684.66
39×106 cm	205.684.64
39×240 cm	905.684.65
62×80 cm	105.684.69
62×220 cm	505.684.67
62×240 cm	305.684.68

KALLARP, high gloss dark grey-green.



Cover panels

Available sizes, width×height	
39×86 cm	505.817.08
39×106 cm	905.817.06
39×240 cm	705.817.07
62×80 cm	000.000.00
62×220 cm	105.817.10
62×240 cm	905.817.11

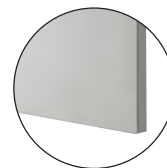
LERHYTTAN, black stained.



Cover panels

Available sizes, width×height	
39×85 cm	303.560.46
39×105 cm	103.560.85
39×240 cm	503.560.45
62×80 cm	103.560.90
62×220 cm	103.560.47
62×240 cm	303.560.89

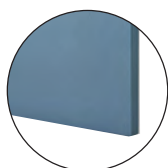
LERHYTTAN, light grey.



Cover panels

Available sizes, width×height	
39×85 cm	103.523.51
39×105 cm	503.523.49
39×240 cm	303.523.50
62×80 cm	503.523.54
62×220 cm	903.523.52
62×240 cm	703.523.53

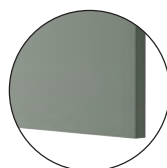
LERHYTTAN, blue.



Cover panels

Available sizes, width×height	
39×85 cm	305.949.81
39×105 cm	905.949.78
39×240 cm	705.949.79
62×80 cm	705.949.84
62×220 cm	105.949.82
62×240 cm	905.949.83

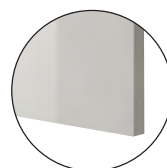
NICKEBO, matt grey-green.



Cover panels

Available sizes, width×height	
39×83 cm	105.625.56
39×103 cm	905.625.57
39×240 cm	705.625.58
62×80 cm	505.625.59
62×220 cm	305.625.60
62×240 cm	105.625.61

RINGHULT, high-gloss light grey.



Cover panels

Available sizes, width×height	
39×86 cm	703.271.27
39×106 cm	103.271.25
39×240 cm	903.271.26
62×80 cm	103.271.30
62×220 cm	503.271.28
62×240 cm	303.271.29

SINARP, brown.



Cover panels

Available sizes, width×height	
39×86 cm	004.041.43
39×106 cm	404.041.41
39×240 cm	204.041.42
62×80 cm	304.041.46
62×220 cm	804.041.44
62×240 cm	504.041.45

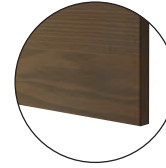
SINARP, oak veneer.



Cover panels

Available sizes, width×height	
39×86 cm	305.951.60
39×106 cm	105.951.61
39×240 cm	905.951.62
62×80 cm	705.951.63
62×220 cm	505.951.64
62×240 cm	205.951.65

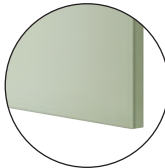
STENSTA, dark brown ash veneer.



Cover panels

Available sizes, width×height	
39×80 cm	205.609.05
62×80 cm	005.609.06

STENSUND, light green.



Cover panels

Available sizes, width×height	
39×83 cm	305.238.99
39×103 cm	705.238.97
39×240 cm	505.238.98
62×80 cm	505.239.02
62×220 cm	905.239.00
62×240 cm	705.239.01

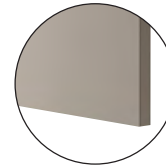
STENSUND cover panel, white.



Cover panels

Available sizes, width×height	
39×83 cm	904.505.45
39×103 cm	404.505.43
39×240 cm	204.505.44
62×80 cm	304.505.48
62×220 cm	704.505.46
62×240 cm	504.505.47

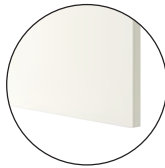
UPPLÖV, matt dark beige.



Cover panels

Available sizes, width×height	
39×83 cm	604.704.65
39×103 cm	104.704.63
39×240 cm	904.704.64
62×80 cm	004.704.68
62×220 cm	404.704.66
62×240 cm	204.704.67

VALLSTENA, white.



Cover panels

Available sizes, width×height	
39×80 cm	405.965.88
39×100 cm	805.965.86
39×240 cm	605.965.87
62×80 cm	205.965.94
62×220 cm	805.965.91
62×240 cm	405.965.93

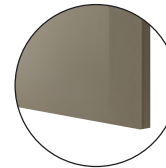
VOXTORP, oak effect.



Cover panels

Available sizes, width×height	
39×86 cm	105.591.15
39×106 cm	005.591.11
39×240 cm	605.591.13
62×80 cm	905.591.21
62×220 cm	705.591.17
62×240 cm	305.591.19

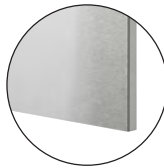
VOXTORP, high-gloss dark grey-brown.



Cover panels

Available sizes, width×height	
39×86 cm	305.817.47
39×106 cm	705.817.45
39×240 cm	505.817.46
62×80 cm	705.817.50
62×220 cm	105.817.48
62×240 cm	905.817.49

VÅRSTA cover panel, stainless steel.



Cover panels

Available sizes, width×height	
39×80 cm	804.105.88
62×80 cm	604.105.89

VÅRSTA, stainless steel.



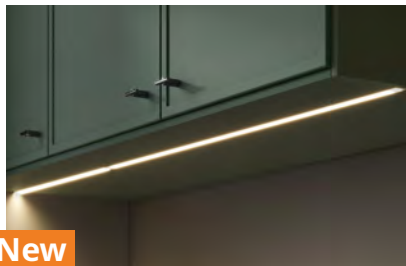
Cover panels with legs

Available sizes, width×height	
39×80 cm	804.106.06
62×80 cm	304.106.04

Cover panel for integrated lighting

This cover panel allows for easy and seamless installation of integrated lighting beneath wall cabinets. Consists of 2 pieces dimensioned to fit the wall cabinets

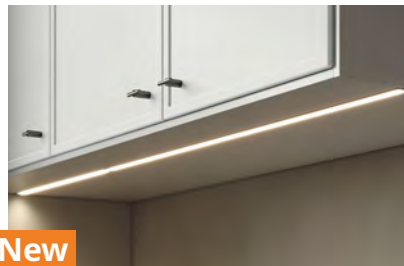
depth perfectly, leaving a gap for MITTLED lighting strip in between. Just trim the panels to length.



New

ASPUDDEN cover panel for integrated lighting, dark grey-green,

221cm 205.953.54



New

ASPUDDEN cover panel for integrated lighting, light grey,

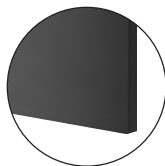
221cm 405.950.32

FÖRBÄTTRA cover panels

Our FÖRBÄTTRA white, dark grey, matt anthracite and walnut effect cover panels are developed to fit all our white, dark grey, matt anthracite, walnut effect doors

and drawer fronts. Choose a FÖRBÄTTRA in the same colour and finish as your door for a perfect match.

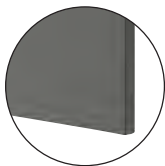
FÖRBÄTTRA cover panel, matt anthracite.



Available sizes, width×height

39×83 cm	205.267.37
39×103 cm	605.267.35
39×240 cm	405.267.36
62×80 cm	205.267.42
62×220 cm	005.267.38
62×240 cm	805.267.39

FÖRBÄTTRA cover panel, dark grey.



Available sizes, width×height

39×86 cm	304.540.80
39×106 cm	704.540.78
39×240 cm	504.540.79
62×80 cm	704.540.83
62×220 cm	104.540.81
62×240 cm	904.540.82

FÖRBÄTTRA cover panel, high-gloss white.



Available sizes, width×height

39×86 cm	303.974.76
39×106 cm	803.974.74
39×220 cm	503.974.75
62×80 cm	703.974.79
62×220 cm	103.974.77
62×240 cm	903.974.78

FÖRBÄTTRA cover panel, white.



Available sizes, width×height

39×86 cm	102.978.83
39×106 cm	502.978.81
39×240 cm	302.978.82
62×80 cm	402.978.86
62×220 cm	902.978.84
62×240 cm	602.978.85

FÖRBÄTTRA cover panel, matt white.



Available sizes, width×height

39×86 cm	604.176.61
39×106 cm	004.176.59
39×240 cm	804.176.60
62×80 cm	004.176.64
62×220 cm	404.176.62
62×240 cm	204.176.63

FÖRBÄTTRA cover panel, off-white.



Available sizes, width×height

39×86 cm	402.344.36
39×106 cm	302.057.26
39×240 cm	102.057.27
62×80 cm	902.057.28
62×220 cm	402.344.60
62×240 cm	502.057.25

Decorative strips

Decorative strips provides the finishing touch to your kitchen. They come in many different styles, but we have something for all our door and drawer families. Use them to tie your style together, hide lighting or just as a decorative element.

You can choose how to mount them on your cabinets. Below we show the entire range and some different ways of mounting them both above as mouldings and below your cabinet, either wrapped around the whole cabinet or just between your cover panels.

ASKERSUND decorative strip rounded,
light ash effect.

221×6 cm 803.318.50



AXSTAD decorative strip rounded,
grey-green.

221×6 cm 505.639.26



BODBYN decorative strip rounded,
black.

221×6 cm 105.685.77



BODBYN decorative strip contoured,
off-white.

221×6 cm 804.177.59



ENKÖPING deco strip,
white wood effect.

221×3 cm 805.057.51



FORSBACKA deco strip,
oak effect.

221×2.9 cm 005.652.25



Decorative strips

HAVSTORP deco strip rounded,
beige.

221×6 cm 604.752.55



HAVSTORP deco strip rounded,
deep green.

221×6 cm 405.683.64



HAVSTORP deco strip rounded,
light grey.

221×6 cm 905.684.70



KALLARP decorative strip,
high-gloss light dark grey-green.

221×6 cm 705.817.12



LERHYTTAN decorative strip rounded,
black stained.

221×4.3 cm 903.560.91



LERHYTTAN decorative strip rounded,
light grey.

221×4.3 cm 903.523.71



LERHYTTAN decorative strip rounded,
blue.

221×4.3 cm 205.949.86



NICKEBO decorative strip rounded,
matt grey-green.

221×1 cm 905.625.62



RINGHULT decorative strip rounded,
high-gloss light grey.

221×6 cm 903.271.31



SINARP decorative strip rounded,
brown.

221×6 cm 104.041.47



SINARP decorative strip rounded,
oak veneer.

221×6 cm 005.951.66



STENSUND decorative strip,
light green.

221×3 cm 305.239.03



STENSUND decorative strip,
white.

221×3 cm 104.505.49



Decorative strips

UPPLÖV decorative strip,
matt dark beige.

221×1 cm 604.704.70



VOXTORP decorative strip rounded,
high-gloss dark grey-brown.

221×6 cm 505.817.51



VOXTORP decorative strip rounded,
oak effect.

221×6 cm 305.591.24



FÖRBÄTTRA decorative strips

Our FÖRBÄTTRA white, grey, anthracite and walnut effect decorative strips are developed to fit all our white, dark grey, matt anthracite and walnut effect doors and

drawer fronts. Choose a FÖRBÄTTRA in the same colour and finish as your door for a perfect match.

FÖRBÄTTRA decorative strip rounded,
dark grey.

221×6 cm 504.540.84



FÖRBÄTTRA decorative strip rounded,
high-gloss white.

221×6 cm 503.974.80



FÖRBÄTTRA decorative strip,
matt anthracite.

221×6 cm 005.267.43



FÖRBÄTTRA decorative strip rounded,
matt white.

221×6 cm 704.176.65



FÖRBÄTTRA decorative strip rounded,
off-white.

221×6 cm 702.069.60



FÖRBÄTTRA decorative strip rounded,
white.

221×6 cm 202.978.87



Plinths and legs

Choose between a regular or a decorative plinth to cover the gap between your cabinet and the floor. As an alternative to a plinth you can also choose to put legs on your base and high cabinets.

BODBYN, black.



Plinth
220x8 cm 405.972.67



Decorative plinth
221x8 cm 805.685.74



Decorative plinth with cut out
66x8 cm 305.685.76



Leg, 2-pack
8 cm 605.686.07

LERHYTTAN black.



Plinth
220x8 cm 403.560.84



Leg for decorative plinth
2-pack 103.978.06



Corner leg for decorative plinth.
2-pack 204.032.27

LERHYTTAN light grey.



Plinth
220x8 cm 403.560.84



Leg for decorative plinth
2-pack 903.978.07



Corner leg for decorative plinth.
2-pack 404.032.31

LERHYTTAN blue.



Plinth
220x8 cm 105.950.24



Leg for decorative plinth
2-pack 005.949.87



Corner leg for decorative plinth.
2-pack 105.949.77

ASKERSUND light ash effect.



Plinth
220x8 cm 903.318.78

ASPUDDEN dark grey-green.



New

Plinth
220x8 cm 905.953.84

ASPUDDEN light grey.



New

Plinth
220x8 cm 905.950.63

AXSTAD grey-green.



Plinth
220x8 cm 005.640.04

BROKHULT walnut effect light grey.



Plinth
220x8 cm 102.807.74

FORSBACKA oak effect.



Plinth
220x8 cm 705.652.60

HAVSTORP beige.



Plinth
220x8 cm 404.752.56

HAVSTORP deep green.



Plinth
220x8 cm 005.725.46

HAVSTORP light grey.



Plinth
220x8 cm 005.711.51

KALLARP high-gloss light grey-blue.



Plinth
220x8 cm 005.817.44

NICKEBO matt grey-green.



Plinth
220x8 cm 705.625.63

RINGHULT high-gloss light grey.



Plinth
220x8 cm 603.271.56

SINARP brown.



Plinth
220x8 cm 004.041.81

SINARP oak effect.



Plinth
220x8 cm 406.111.88

STENSTA dark brown ash effect.



Plinth
220x8 cm 505.921.27 €00

STENSUND beige.



Plinth
220x8 cm 104.532.08

STENSUND light green.



Plinth
220x8 cm 905.240.23

UPPLÖV matt dark beige.



Plinth
220x8 cm 704.705.06

VOXTORP high-gloss dark grey-brown.



Plinth
220x8 cm 605.817.79

VOXTORP oak effect.



Plinth
220x8 cm 605.591.65

VÅRSTA stainless steel colour.



Plinth
220x8 cm 404.351.47

Plinths and legs

FÖRBÄTTRA plinths and legs

Our plinths white, dark grey, matt anthracite and walnut effect plinths and legs are developed to fit all our white, dark grey, anthracite, walnut effect doors

and drawers fronts. Choose a FÖRBÄTTRA in the same colour and finish as your door for a perfect match.

FÖRBÄTTRA off-white.



Plinth
220x8 cm 602.807.76



Decorative plinth
220x8 cm 302.613.07



Decorative plinth with cut out
66x8 cm 402.930.77



Leg, 2-pack.
8 cm 902.613.09

FÖRBÄTTRA dark grey.



Plinth
220x8 cm 804.541.10

FÖRBÄTTRA white.



Plinth
220x8 cm 403.275.05

FÖRBÄTTRA high-gloss white.



Plinth
220x8 cm 703.975.06

FÖRBÄTTRA matt white.



Plinth
220x8 cm 504.176.66

FÖRBÄTTRA matt anthracite.



Plinth
220x8 cm 705.267.87

Legs



METHOD leg, 8 cm, 2-p.
705.560.67



CAPITA leg, 8 cm, 4-p.
Stainless steel 302.443.46



CAPITA leg, 16 cm, 4-p.
Stainless steel 102.678.95



FORBACKA leg, oak, 8 cm, 2-p.
Front leg 405.652.52
Back leg 305.652.19



UTBY leg, stainless steel.
88 cm 305.036.60



FÖRBÄTTRA
Decorative plinth.
220×8 cm, off-white,
302.613.07

METOD cabinets

Modular cabinets that fits your space

What does your dream kitchen look like? How much time will you spend in it and how will you use it? When it comes to kitchens, we're all different. We have different dreams, different needs and different preconditions. To meet this diversity, what could be better than a highly flexible kitchen system with

cabinets that can suit everyone, and be planned in everywhere? Whatever the size of your home or family, with cabinets in different sizes, drawers with endless possibilities and interior organisers made to match, you can turn the kitchen of your dreams into the kitchen in your home.

25

The METOD kitchen comes with a free 25-year guarantee. Find out more on page 138



On this page you can see all available METHOD cabinets and their sizes. Choose and mix them to fit the architecture of your room as well as your own needs.

METHOD base cabinet frames



30×37×80 cm	
White	204.171.49
Black-grey	805.916.97



40×37×80 cm	
White	302.056.32
Black-grey	405.916.99



60×37×80 cm	
White	502.056.31
Black-grey	805.917.01



80×37×80 cm	
White	102.056.28
Black-grey	405.917.03



20×60×80 cm	
White	302.125.62
Black-grey	005.916.96



30×60×80 cm	
White	504.171.95
Black-grey	605.916.98



40×60×80 cm	
White	802.134.32
Black-grey	005.917.00



60×60×80 cm	
White	502.056.26
Black-grey	605.917.02



80×60×80 cm	
White	102.056.33
Black-grey	205.917.04

METHOD corner base cabinets

You find UTRUSTA corner carousels designed to fit perfectly inside the corner cabinet on page 50



88×60×80 cm	
White	405.967.48
Black-grey	105.916.86



128×68×80 cm	
White	405.967.53
Black-grey	305.916.85

METHOD base cabinet for built-in



60×60×80 cm	
White	702.135.69
Black-grey	805.916.78



80×60×80 cm	
White	502.154.75
Black-grey	605.916.79

METHOD high cabinet frames



40×37×200 cm	
White	102.125.63
Black-grey	505.916.89



40×60×200 cm	
White	902.125.59
Black-grey	305.916.90



80×37×200 cm	
White	502.125.61
Black-grey	205.916.95



60×60×220 cm	
White	902.125.64
Black-grey	505.916.94



60×37×200 cm	
White	702.125.60
Black-grey	905.916.92



60×60×200 cm	
White	602.125.65
Black-grey	705.916.93



40×60×220 cm	
White	102.125.58
Black-grey	105.916.91

METHOD top cabinets

See all our appliances in the Appliance buying guide available at www.IKEA.co.uk



40×60×40 cm	
White	602.240.78
Black-grey	105.917.33



Fridge/freezer top cabinet frame 60×60×40 cm	
White	402.055.37
Black-grey	905.917.05



Fridge/freezer top cabinet frame 60×60×60 cm	
White	002.055.39
Black-grey	705.917.06

METHOD high cabinets for built-in

See all our appliances in the Appliance buying guide available at www.IKEA.co.uk



For fridge/oven
60×60×200 cm

White	902.135.68
Black-grey	905.916.87



For fridge/oven
60×60×220 cm

White	502.135.70
Black-grey	705.916.88



For fridge/oven 60×60×140 cm

White	203.854.74
Black-grey	305.917.32

METHOD wall cabinet frame for built-in extractor hood

See all our appliances in the Appliance buying guide available at www.IKEA.co.uk



60×37×60 cm

White	505.476.39
Black-grey	205.922.18



60×37×80 cm

White	305.476.40
Black-grey	005.922.19



60×37×100 cm

White	105.476.41
Black-grey	405.922.17



80×37×60 cm

White	905.476.42
Black-grey	605.922.21



80×37×80 cm

White	705.476.43
Black-grey	405.922.22



80×37×100 cm

White	005.476.46
Black-grey	805.922.20

METHOD corner wall cabinets

You find *UTRUSTA* corner carousels designed to fit perfectly inside the corner cabinet on page 50



68×68×60 cm

White	002.125.54
Black-grey	005.916.82



68×68×80 cm

White	202.056.61
Black-grey	805.916.83



68×68×100 cm

White	702.152.81
Black-grey	205.916.81

METHOD wall cabinets



20×37×80 cm, with shelves

White	802.521.12
Black-grey	505.917.07



30×37×60 cm

White	404.210.51
Black-grey	305.917.08



30×37×80 cm

White	704.172.98
Black-grey	105.917.09



40×37×40 cm

White	102.055.29
Black-grey	705.917.11



40×37×60 cm

White	102.055.34
Black-grey	305.917.13



40×37×80 cm

White	702.055.31
Black-grey	105.917.14



40×37×100 cm

White	502.055.32
Black-grey	905.917.10



60×37×40 cm

White	302.055.33
Black-grey	605.917.16



60×37×60 cm

White	802.055.35
Black-grey	405.917.17



60×37×80 cm

White	302.055.28
Black-grey	505.917.26



60×37×100 cm

White	202.055.38
Black-grey	805.917.15



80×37×40 cm

White	802.055.40
Black-grey	105.917.28



80×37×60 cm

White	602.055.22
Black-grey	905.917.29



80×37×80 cm

White	702.055.26
Black-grey	705.917.30



80×37×100 cm

White	902.055.30
Black-grey	305.917.27

Open storage

Create a nice break in a row of cabinets with doors using open cabinets. Your kitchen becomes more personal and you can have often used items like cookbooks within arm's reach.



TORNVIKEN open cabinet.

20×37×40 cm	
White	203.589.65
20×37×60 cm	
White	603.589.68
20×37×80 cm	
White	203.589.70



TORNVIKEN box, 16×34×15 cm. A flexible box that you can place in TORNVIKEN open cabinet and also lift out and place somewhere – like on the worktop or the dining table.

White	003.589.71
-------	------------



TORNVIKEN wine shelf, 40×37×40 cm.

White	803.589.72
-------	------------



VADHOLMA open storage, brown/stained ash.

20×37×40 cm	603.743.36
20×37×60 cm	603.743.41
20×37×80 cm	203.743.38



VADHOLMA drawer unit, 40×37×40 cm. Smooth-running drawers with stop, self-closing the last centimetres. You can view and access what's inside, as the drawers can be pulled out all the way.

Brown/stained ash	503.743.32
-------------------	------------



VADHOLMA wine shelf, 40×37×40 cm.

Brown/stained ash	903.743.30
-------------------	------------

Small appliances storage



TITTEBO tambour storage for small appliances, black.

60 cm	205.502.75
-------	------------

TITEBO

Tambour storage for small appliances,
black. 60 cm. 205.502.75





METOD interior fittings and organisers

Hidden helpers

With METOD interior fittings and organisers, you can get the look you want on the outside without revealing what's inside. The cabinets can be hiding all sorts of kitchen surprises. Behind a door you can find pull-out organisers for your cleaning equipment, organisers keeping all your pot lids in perfect order, or a great bunch of fully extendable drawers

making everything easy to reach. Not to mention drawers inside drawers allowing you to utilise the cabinet space to a maximum. It's really up to you what goes inside your kitchen cabinets.

On the following pages you'll find numerous of handy helpers making your daily work in the kitchen run smoother.



MAXIMERA drawers and drawer accessories

MAXIMERA drawers pull out all the way, and thanks to a built-in damper they always close softly and effortlessly. You have complete overview and you can easily reach the smallest of utensils even at the back of the drawer.



MAXIMERA pull-out interior fittings.

20 cm	703.188.68
30 cm	304.170.40



MAXIMERA drawer low*, white.

40×37 cm	002.214.45
40×60 cm	602.214.47
60×37 cm	302.046.37
60×60 cm	202.046.28
80×37 cm	802.046.30
80×60 cm	402.046.27



MAXIMERA drawer medium*, white.

40×37 cm	602.046.26
40×60 cm	402.214.48
60×37 cm	802.214.46
60×60 cm	202.214.49
80×37 cm	102.046.38
80×60 cm	502.046.36



MAXIMERA drawer high, white.

40×37 cm	702.046.35
40×60 cm	002.046.34
60×37 cm	402.046.32
60×60 cm	902.046.39
80×37 cm	002.214.50
80×60 cm	202.046.33

For waste sorting (see page 118)

60×45 cm	602.046.31
80×45 cm	002.046.29

MAXIMERA drawers are available in different sizes to give you plenty of options depending on your storage needs. You can also add inner drawers to fully utilise the cabinet space.



MAXIMERA add-on side for high drawer, glass, 2-p.

37 cm	102.388.60
60 cm	502.388.58

UTRUSTA baskets and drawer fronts



UTRUSTA wire basket.

40 cm	802.046.73
60 cm	002.046.72



UTRUSTA drawer front, low, white.

40 cm	802.214.51
60 cm	402.046.51
80 cm	202.046.52



UTRUSTA drawer front, medium, white.

40 cm	602.214.52
60 cm	802.046.54
80 cm	402.214.53



UTRUSTA drawer front, high, white.

40 cm	002.046.53
60 cm	502.046.55
80 cm	302.046.56

Corner interior



UTRUSTA wall corner cabinet carousel.

68 cm	802.656.47
-------	------------



UTRUSTA corner base cabinet carousel, grey.

88 cm	205.967.87
-------	------------



UTRUSTA corner base cabinet, pull-out fitting, grey.

128 cm	405.967.91
--------	------------

KNIVSHULT drawers, drawer fronts and accessories



KNIVSHULT drawer, low, dark grey.

40×37 cm	406.006.65
40×60 cm	206.006.66
60×37 cm	006.006.67
60×60 cm	806.006.68
80×37 cm	606.006.69
80×60 cm	406.006.70



KNIVSHULT drawer front, low, dark grey.

40 cm	706.007.01
60 cm	506.007.02
80 cm	306.007.03



KNIVSHULT drawer, medium, dark grey.

40×37 cm	206.006.71
40×60 cm	006.006.72
60×37 cm	806.006.73
60×60 cm	306.006.75
80×37 cm	106.006.76
80×60 cm	906.006.77



KNIVSHULT drawer front, medium, dark grey.

40 cm	506.006.98
60 cm	306.006.99
80 cm	906.007.00



KNIVSHULT drawer, high, dark grey.

40×37 cm	306.006.56
40×60 cm	106.006.57
60×37 cm	906.006.58
60×45 cm	706.006.59
60×60 cm	506.006.60
80×37 cm	306.006.61
80×45 cm	106.006.62
80×60 cm	706.006.64



UTRUSTA connecting rail for fronts, black-grey.

106.041.13



UTRUSTA assembly kit for pull-out function, black-grey.

206.040.99



UTRUSTA fitting for mounting drawer on door, black-grey.

806.041.00



KNIVSHULT pull-out interior fittings, dark grey.

20 cm	706.006.78
30 cm	506.006.79

METHOD system fittings and hinges

Even the smaller details are important when you are planning a complete kitchen. It all depends on your needs and wishes – but maybe it's just this small part that will make a big difference.



METHOD suspension rail, 200 cm.
Galvanised 602.056.64



METHOD ventilation grille.
Stainless steel 702.561.77



METHOD ventilated plinth, 60 cm.
Stainless steel 302.214.58



UTRUSTA push opener, electrical. You can open the waste sorting bin with the push of a finger – or use your hip, knee or foot if your hands are busy.
702.272.36



UTRUSTA push opener, 2-p. Push to open; no handles needed.
802.302.24



UTRUSTA hinge 45°, 2-p. The hinge is only for use with a corner wall cabinet and is only needed when you want to mount two doors on the cabinet.
202.619.92



UTRUSTA hinge 95°, 2-p. Fits cabinets for integrated fridge/freezers.
202.046.47



UTRUSTA hinge with built-in damper 110°, 2-p. This hinge has an integrated damper, so that the door closes slowly, softly and silently. You can easily deactivate the damper with a slide button, for example if you want to use a push opener or if the door closes too slowly, and re-activate it if you want.
805.248.82



UTRUSTA hinge with built-in damper for kitchen 153°, 2-p. This hinge has an integrated damper, so that the door closes slowly, softly and silently. You can easily deactivate the damper with a side button, for example if you want to use a push opener or if the door closes too slowly, and re-activate if you want.
104.272.62



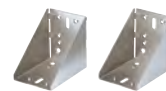
UTRUSTA hinge with push-opener for horizontal door, 2-p. Push to open; no handles needed. Door lift with catch for gentle closing included. You can easily mount the door front in the right position, because the hinges are adjustable in height, depth and width. Snap-on hinges can be mounted onto the door without screws, and you can easily remove the door for cleaning.

Black 904.624.83
White 704.624.84



UTRUSTA hinge with damper for horizontal door, 2-p. This hinge has an integrated damper, so that the door closes slowly, softly and silently. You can easily mount the door front in the right position, because the hinges are adjustable in height, depth and width. Snap-on hinges can be mounted onto the door without screws, and you can easily remove the door for cleaning.

Black 704.624.79
White 504.624.80



UTRUSTA corner fittings, 2-p. By using the corner fitting, you can build a corner wall-cabinet solution at a 90° angle.
Galvanised 403.059.71



UTRUSTA hinge for kitchen corner cabinet 95°, with built-in damper, 2-p.
806.073.73



METHOD cover strip, 220 cm. After mounting your new kitchen cabinets, finish the look of your kitchen like a professional. This cover strip works magic by covering the gap between the cabinets and the wall.
White 102.448.42
Black-grey 605.916.84



METHOD connector rail for cabinets/cover panel, 2-p. This rail helps you to connect your base cabinets back-to-back. It can also be used to attach a cover panel to the back side of a base cabinet, giving your kitchen island or peninsula a uniform look.
805.570.28



METHOD floor anchoring frame for kitchen island. This floor anchoring frame simplifies the task of securing your kitchen island or peninsula to make sure that it stays in place. The feet can be adjusted to level your frame on uneven floors.
210 cm 805.570.33



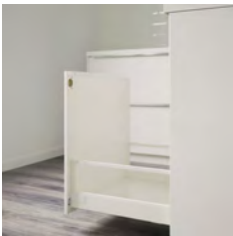
UTRUSTA connection fitting for doors. UTRUSTA connection fitting for doors is used to connect two doors to one, so you get a uniform look for e.g. a high cabinet or an integrated fridge and freezer.

303.669.17



UTRUSTA connecting rail for fronts. With this connection rail you can easily add and align fronts to the dishwasher so it gets the same look as the rest of your kitchen.

005.181.92



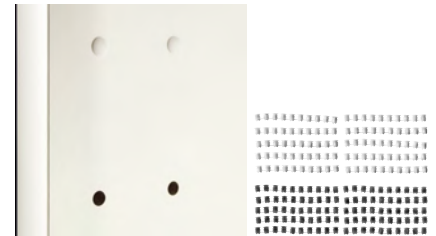
UTRUSTA fitting for mounting drawer on door.

White	103.122.37
Black-grey	806.041.00



UTRUSTA assembly kit for pull-out function.

White	105.153.29
Black-grey	206.040.99



VARIERA cover cap, 100-p. Covers drill holes in the glass door cabinet or open shelf. Suitable for all products with 5 mm holes.

White	002.263.15
Black	802.263.16

Shelves



UTRUSTA shelf, white, 2-p.

20×60 cm	702.056.06
30×37 cm	304.173.42
30×60 cm	304.173.99
40×37 cm	402.056.22
40×60 cm	302.056.13
60×37 cm	102.056.14
60×60 cm	502.056.12
80×37 cm	102.056.09
80×60 cm	702.056.11



UTRUSTA shelf, black-grey, 2-p.

20×60 cm	605.917.78
30×37 cm	405.917.79
30×60 cm	005.917.81
40×37 cm	805.917.82
40×60 cm	605.917.83
60×37 cm	405.917.84
60×60 cm	105.917.85
80×37 cm	905.917.86
80×60 cm	705.917.87



UTRUSTA shelf, glass, 2-p.

30×37 cm	204.174.13
40×37 cm	202.133.31
60×37 cm	902.056.05
80×37 cm	202.056.04



UTRUSTA shelf for corner wall cabinet, 68 cm.

Glass	802.056.63
White	002.056.62
Black-grey	505.917.88



UTRUSTA shelf for corner base cabinet, 128 cm.

White	605.967.71
Black-grey	305.917.89



UTRUSTA shelf for corner base cabinet, 88 cm.

White	802.776.50
Black-grey	105.917.90



UTRUSTA fixed ventilated shelf, 60×60 cm.

White	902.135.73
Black-grey	805.917.77



UTRUSTA bracket for oven.

Galvanised	103.019.60
------------	------------

Additional interior fittings and organisers



UTRUSTA cleaning interior, 140 cm. Pull-out organisers make it easy for you to see and reach your cleaning supplies.

105.808.24



UTRUSTA towel rail, 16 cm. It's easy to access towels because it pulls out.

White 502.472.16



UTRUSTA pull-out work surface, 60 cm. You can never have too much work space in the kitchen. This clever pull-out surface comes to the rescue when unloading groceries or chopping veggies and hides away when you push it in again.

005.105.77



New

UTRUSTA under-sink organiser. Maximises storage under the sink with a side-attached pull-out design featuring two levels for efficient space-saving organisation of dish-washing items.

35×29×43 cm 206.027.31



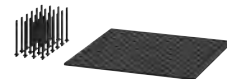
VARIERA plastic bag dispenser. Ideal for storing things like plastic bags, toilet/kitchen rolls, gloves and socks.

White 800.102.22



VARIERA pot lid organiser, stainless steel. You can customise the length based on your storage needs.

701.548.00



UPPDATERA pegboard drawer organiser. Adjustable pegs make it easy to customise drawers according to contents, such as plates, pots, lids or food containers.

60 cm 604.600.08

80 cm 004.600.11



VARIERA shelf insert, white. Place on a shelf to get more storage space for glasses, bowls and spice jars. Makes the contents of the cabinet easy to overview and access.

32×13×16 cm 801.366.22

32×28×16 cm 601.366.23



UPPDATERA plate holder, anthracite. The plate holder is adjustable, so you can customise the width based on the size of your plates.

15-23 cm 704.861.78

19-31 cm 504.861.79



UPPDATERA box, set of 3. The boxes can be combined in different ways to customise and maximise the space inside your drawers.

Grey 205.441.85



UPPDATERA storage box.

16×24×15 cm

Light bamboo 405.207.20

Dark bamboo 005.717.78

24×32×15 cm

Light bamboo 805.207.18

Dark bamboo 605.717.80



New

UPPDATERA box, 34×24 cm.

White 405.464.71

Anthracite 206.105.52



New

UPPDATERA box, 24×17 cm. Perfect fit for drawers and deep drawers in METHOD.

Anthracite 805.040.49

White 205.464.67

Grey-blue 006.105.48

Red-brown 606.105.50



UPPDATERA divider for drawer. You can customise your storage since the dividers are adjustable. Perfect for keeping things like food containers and lids organised.

40 cm 204.599.88

60 cm 404.599.92

80 cm 904.599.99



UPPDATERA storage box, 50×12 cm

Anthracite 505.807.99



UPPDATERA box with slider, 50×15×12 cm

Anthracite 895.907.16



New

VARIERA bottle rack

606.047.14

KNOXHULT kitchen

A kitchen made easy, with great value for your money

KNOXHULT kitchen units make it easier to create a kitchen to love than you may think.

The selection of units in different shapes and sizes help create a practical kitchen catered to your very needs. Add to this, they come with pre-coordinated fronts and worktops, so all you have to do is combine the units to suit your space and preferences. When you're happy with the result, personalise with your favourite sink, tap, appliances, knobs or handles and lighting and you're ready to cook.

On the inside you have great storage possibilities for things both large and small. To create order and make efficient use of space inside cabinets and drawers in your KNOXHULT kitchen, add organisers, so you can spend less time searching and more time cooking.

KNOXHULT kitchen units offer a simple path to a great kitchen that will be your companion for years to come.

5

The KNOXHULT kitchen has a 5-year guarantee. Find out more on page 138





KNOXHULT front and worktop expressions



White front with oak effect worktop

White fronts paired with oak effect worktop gives the kitchen a fresh and timeless expression that is easy to like.



Dark grey front with white marble effect worktop

Dark grey fronts combined with a white marble effect worktop brings a modern air to your kitchen and makes it feel warm and inviting.



Oak effect front with white marble effect worktop

The oak effect fronts paired with a white marble effect worktop creates a vibrant expression that adds warmth to your kitchen.



White framed front with oak effect worktop

Timeless white framed fronts combined with oak effect worktop creates a welcoming kitchen with a traditional appeal.

Base cabinets



KNOXHULT base cabinet with drawers, 40 cm. This base cabinet with 3 drawers lets you organise your kitchen essentials, using space wisely and making things easy to find. $\frac{3}{4}$ drawer extension for good overview and easy access to the content. The laminate worktop is durable and easy to maintain. With a little care, it will look good as new for many years. The cabinet and drawer fronts are covered with melamine, providing a scratch-resistant surface that is easy to wipe clean.

White	903.267.87
Dark grey	605.887.85
Oak effect	606.039.79
White frame	506.039.70



KNOXHULT base cabinet with doors and drawer, 120 cm. This base unit can be fitted with a sink and tap and it has convenient worktop space giving you room to prepare food as well as easy access to cookware in the cabinet underneath. With both a drawer and adjustable shelves, you can organise the space inside cabinets according to what is being stored. The unit can be assembled in two ways, with the cabinet for the sink and tap positioned either to the left or right, depending on your needs. The laminate worktop is durable and easy to maintain. With a little care, it will look good as new for many years. Cabinets and fronts are covered with melamine providing a scratch-resistant surface that is easy to wipe clean.

White	303.267.90
Dark grey	405.887.86
Oak effect	406.039.80
White frame	306.039.71



KNOXHULT base cabinet with door and niche, 120 cm. This base unit has a 60 cm wide niche where you can place a freestanding dishwasher, small fridge or washing machine or you can choose to keep it open to create an area where you can sit. Can be assembled in two ways, with the niche positioned either to the left or right, depending on your needs. The unit can also be fitted with a sink and tap. The laminate worktop is durable and easy to maintain. With a little care, it will look good as new for many years. The cabinet and drawer fronts are covered with melamine, providing a scratch-resistant surface that is easy to wipe clean.

White	606.040.78
Dark grey	606.042.43
Oak effect	406.042.44
White frame	806.042.42



KNOXHULT base cabinet with doors and drawers, 180 cm. This base unit can be fitted with a hob, oven, sink and tap. It gives you a functional work area as well as easy access to cookware in cabinets and drawers underneath to enable an efficient workflow in your kitchen. With both drawers and adjustable shelves, you can organise the space inside cabinets according to what is being stored. The unit can be assembled in two ways, with the cabinet for the oven positioned either to the left or right, depending on your needs. The laminate worktop is durable and easy to maintain. With a little care, it will look good as new for many years. Cabinets and fronts are covered with melamine providing a scratch-resistant surface that is easy to wipe clean.

White	703.267.88
Dark grey	205.887.87
Oak effect	206.039.81
White frame	906.039.73



KNOXHULT corner base cabinet, 100 cm. This base unit makes good use of corner spaces, providing extra depth for working and roomy storage for larger pots and pans. The included shelf is adjustable and allows you to optimise the storage space inside the cabinet. The laminate worktop is durable and easy to maintain. With a little care, it will look good as new for many years. The cabinet and front are covered with melamine, providing a scratch-resistant surface that is easy to wipe clean.

White	004.861.29
Dark grey	005.887.88
Oak effect	306.039.85
White frame	706.039.74

Wall cabinets



KNOXHULT wall cabinet with door, 60×60 cm. This wall cabinet may be fitted above LAGAN extractor hood. The cabinet is ideal for creating additional storage space in the kitchen, providing easy access to often used items. The adjustable shelf allow for efficient use of space inside the cabinet. The cabinet and front are covered with melamine, providing a scratch-resistant surface that is easy to wipe clean. The door can be mounted to open left or right.

White	103.267.91
Dark grey	605.887.90
Oak effect	806.039.83
White frame	206.039.76



KNOXHULT wall cabinet with door, 40×75 cm. This wall cabinet is ideal for creating additional storage space in the kitchen, providing easy access to often used items. The adjustable shelf allow for efficient use of space inside the cabinet. The cabinet and front are covered with melamine, providing a scratch-resistant surface that is easy to wipe clean. The door can be mounted to open left or right.

White	503.267.89
Dark grey	805.887.89
Oak effect	006.039.82
White frame	406.039.75



KNOXHULT wall cabinet with door, 60×75 cm. This wall cabinet is ideal for creating additional storage space in the kitchen, providing easy access to often used items. The adjustable shelf allow for efficient use of space inside the cabinet. The cabinet and front are covered with melamine, providing a scratch-resistant surface that is easy to wipe clean. The door can be mounted to open left or right.

White	404.963.10
Dark grey	405.887.91
Oak effect	106.039.86
White frame	006.039.77



KNOXHULT wall cabinet with doors, 120×75 cm. This wide wall cabinet provides generous storage over your worktop, and the adjustable shelves allow for efficient use of space inside the cabinet. The cabinet and fronts are covered with melamine, providing a scratch-resistant surface that is easy to wipe clean.

White	903.267.92
Dark grey	205.887.92
Oak effect	606.039.84
White frame	806.039.78



KNOXHULT wall cabinet with sliding doors, 120×37.5 cm. This wall cabinet with sliding glass doors makes good use of wall space. You get functional storage with good overview, and the possibility to put your favourite objects on display. Adjustable glass shelves allow you to customise your storage. The cabinet is covered with melamine, providing a scratch-resistant surface that is easy to wipe clean.

White	806.040.20
Oak effect	906.210.81

High cabinets



KNOXHULT high cabinet, 60×31×153 cm. This high cabinet puts kitchen essentials within easy reach. The adjustable shelves allow you to tailor the storage to your needs whether you are creating a pantry for dry foods or looking for storage to hide objects like your ironing board. The cabinet and front are covered with melamine, providing a scratch-resistant surface that is easy to wipe clean. The door can be mounted to open left or right.

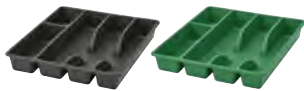
White	406.040.79
Dark grey	506.043.52
Oak effect	906.042.46
White frame	106.043.54



KNOXHULT high cabinet with doors, 60×31×228 cm. This high cabinet is ideal whether you want to create a pantry for dry foods or just need roomier storage. It makes good use of wall space, providing plenty of storage without taking up too much floor space. Adjustable shelves allow for efficient use of space inside the cabinet. Cabinets and fronts are covered with melamine providing a scratch-resistant surface that is easy to wipe clean. The doors can be mounted to open left or right.

White	195.814.09
Dark grey	395.814.08
Oak effect	995.814.10
White frame	595.814.12

Accessories



SMÄCKER cutlery tray, 31×26 cm.

Anthracite	106.014.59
Bright green	806.014.65



SUNNERSTA container,
W12×D11×H13 cm. Fits SUNNERSTA
rail, trolley, mini-kitchen and adjust-
able rack.

White	503.037.35
Beige	106.060.65
Blue-grey	306.060.50
Bright orange	706.060.48



SUNNERSTA hook, 5-p.

White	403.037.26
-------	------------



SUNNERSTA kitchen roll holder,
W24.5×D11.5×H4.7 cm. Max. load 1 kg.

White	204.439.21
-------	------------



**SUNNERSTA rail with 4 hooks/2 con-
tainers**. L60×H14×D13 cm. Including
1 rail, 2 containers and 4 hooks.

White	404.545.60
-------	------------



SUNNERSTA shelf 25,
W25×D14×H5 cm. Max. load 2 kg.

White	904.439.27
-------	------------



SUNNERSTA shelf/dish drainer,
W36.5×D15 cm. Max. load 4 kg.

White	304.439.30
-------	------------



**SUNNERSTA adjustable rack with
hooks**, W45.7 cm. Min. height 45 cm,
max. height 65 cm.

White	204.409.51
-------	------------



SUNNERSTA kitchen organiser set,
no drill/dish drainer/shelf/kitchen
roll holder/container. W23 cm. Min.
height 45 cm, max height 65 cm.

White	193.384.26
-------	------------



SUNNERSTA kitchen organiser set,
no drill/kitchen roll holder/dish drain-
er/2 containers. W23 cm. Min.height
45 cm, max height 65 cm.

White	793.384.28
-------	------------



SUNNERSTA kitchen organiser set,
no drill/kitchen roll holder/dish drain-
er/container. W23 cm.
Min.height 45 cm, max height 65 cm.

White	693.384.24
-------	------------



Kitchenettes

Not all of us have a lot of space or money for a larger, built-in kitchen - and for different reasons, many of us are just looking for a practical solution that isn't so complicated. Our range of kitchenettes offers all the ingredients for this very important function in clever, compact designs. You can choose between our basic or modern expres-

sions and add TILLREDA appliances to customise your culinary space according to your needs. It's all there, personal, functional, affordable and easy to install. And there's no need to part from your beloved kitchenettes when you move because you can easily take it with you. Simple as that.



ÄSPINGE kitchenette

Tight on space?

ÄSPINGE kitchenette is quick and easy to install and doesn't compromise on quality, function or personal expression. The wall shelves can be positioned left, right or centre. The splashback shelf is perfect for display-

ing kitchen knick-knacks while drawer organisers keep things neat. Add your choice of TILLREDA appliances for a fully functional kitchen or opt for LAGAN freestanding appliances. Make the space truly yours.



ÄSPINGE kitchenette. Included: Kitchen frame, hanging wall shelves, backsplash with shelf, worktop, doors, drawer boxes, 2 cutlery trays, 12 hooks, 2 handles, legs, hinges and fittings. FYNDIG sink, LAGAN mixer tap, LILLVIKEN water trap also included. For use with freestanding appliances only.

W120×D60×H202 cm 994.781.68

10

ÄSPINGE kitchenette has a 10-year guarantee. Find out more on page 138. FYNDIG sink is not included in guarantee.

ÖNNERUP kitchenette

A kitchenette with a big heart

ÖNNERUP kitchenette offers a crafted character that perfectly blends traditional charm with practical convenience. The open shelves let you showcase your favourite pieces, while the closed storage keeps eve-

rything else neatly tucked away. Customise with your choice of TILLREDA appliances to suit your needs and enjoy!



ÖNNERUP kitchenette, off-white. Included: Kitchen frame, worktop, 4 shelves, 2 doors and 3 drawers, 6 ENERYDA knobs, FYNDIG sink, SALLSJÖN tap and LILLVIKEN water trap. For use with freestanding appliances only.

130×64×219 cm 696.114.04



ÖNNERUP kitchenette, off-white. Included: Kitchen frame, worktop, 4 shelves, 2 doors and 3 drawers. Complete with knobs and handles.

130×64×219 cm 005.002.86

10

ÖNNERUP kitchenette has a 10-year guarantee. Find out more on page 138. FYNDIG sink is not included in guarantee.

SUNNERSTA mini-kitchen

Flexible and budget-friendly

SUNNERSTA mini-kitchen lets you create an open, welcoming kitchen even in small spaces. It's great for dorm rooms and guest houses, or anywhere you need a compact setup. Hooks and containers keep towels

and utensils organised. Add TILLREDA appliances, and you'll have everything you need. This affordable, flexible kitchen is easy to buy, get home, install and move wherever life takes you.



SUNNERSTA mini-kitchen. 5 hooks included. This furniture must be fixed to the wall. LILLVIKEN water trap and strainer are included in the price, but packaged separately.

W112×D56×H139 cm

691.396.84



SUNNERSTA mini-kitchen. 5 hooks included. This furniture must be fixed to the wall. To be completed with LILLVIKEN water trap and strainer.

W112×D56×H139 cm

903.020.79

Accessories



SUNNERSTA hook, 5-p.

White

403.037.26



€000 SUNNERSTA container, W12×D11×H13 cm. Fits SUNNERSTA rail, trolley, mini-kitchen and adjustable rack.

White 503.037.35

Beige 106.060.65

Blue-grey 306.060.50

Bright orange 706.060.48



SUNNERSTA kitchen roll holder, white. Max. load 1 kg.

W24.5×D11.5×H4.7 cm 204.439.21

W28.4×11.5×H4.7 cm 305.098.03



SUNNERSTA rail with 4 hooks/2 containers. L60×H14×D13 cm. Including 1 rail, 2 containers and 4 hooks.

White

404.545.60



SUNNERSTA shelf/dish drainer, W36.5×D15 cm. Max. load 4 kg.

White

304.439.30



SUNNERSTA shelf 25, W25×D14×H5 cm. Max. load 2 kg.

White

904.439.27



SKATTAN container, 12×34 cm. Instead of storing things in drawers, you can have everything from cutlery to accessories close at hand. Hang this container on a hook under ENHET frames to quickly turn the space into practical storage.

304.657.57

Lighting and home electronics

A brighter kitchen life

Good lighting is an essential part of any kitchen. That's why we have different families of integrated lighting that are perfectly designed to fit into our kitchen cabinets. Including integrated lighting in your kitchen is the best way to show off your favourite dinnerware, behind glass doors or in drawers.

Worktop lighting helps you focus on function and makes kitchen work less of a chore. Preparing and cooking meals becomes safer, easier and more fun when you have a good, even light across your worktop.

Enjoy an even better kitchen life with the ability to light turn on and off wirelessly, or soften the light when you dine or socialise. All you need is a wireless dimmer or remote control. Or connect your smart lighting to DIRIGERA and connect all your lights together with other smart products in the IKEA Home Smart app. You can choose the features and functions that are most important to you and add products to create your perfect kitchen atmosphere.



Kitchen installation

If you want we can install all your kitchen lighting for you, as a part of our Kitchen Installation service. See more on **page 04**.



Drawer lighting simplifies finding what you need even during those midnight kitchen raids. Opening and closing the drawer turns the light on and off automatically.



Spotlights provide a focused light that is good for lighting smaller areas and behind glass doors.



Worktop lighting should give you a clean, clear view of all the work you're doing in the kitchen.



Cabinet lighting illuminates your favourite kitchen doors and creates cosy mood light in the entire kitchen.

Lighting for METOD

MITTLED series



MITTLED has compact design and is easy to install. MITTLED uses only one connection cord per row of light as each element connects to the next one in easy way.



MITTLED LED worktop lighting. MITTLED LED fits to METOD cabinet sizing and features a compact design. To be completed with TRÅDFRI driver, VÅGDAL cord and FÖRNIMMA power supply, sold separately. Dimmable with wireless dimmer or remote control and add to the IKEA Home Smart app with DIRIGERA, sold separately.

White	
20 cm, 2.0W, 140lm	904.570.52
30 cm, 3.0W, 240lm	904.570.97
40 cm, 4.0W, 300lm	403.535.37
60 cm, 5.5W, 480lm	803.596.17
80 cm, 7.5W, 640lm	503.596.33



MITTLED LED lighting strip for drawers. In an IKEA kitchen you can get lighting for all your drawers, that way you'll always be able to find what you need even during those midnight kitchen raids. Opening and closing the drawer turns the light on and off automatically. To be completed with ANSLUTA LED driver with cord 19W, sold separately.

White	
36 cm, 2.0W, 50lm	304.635.17
56 cm, 2.0W, 50lm	804.635.48
76 cm, 3.5W, 100lm	204.635.65



MITTLED LED spotlight. Provides a focused light that is good for lighting smaller area and adds a decorative finish to your kitchen. To be completed with TRÅDFRI LED driver and FÖRNIMMA power supply cord sold separately. Dimmable with BILRESA remote control or in the IKEA Home smart app with DIRIGERA hub, sold separately. Can be installed in its housing or integrated into coving. Ø6.8 cm.

Aluminium-colour	
2.2W, 150lm	104.353.99
White	
2.2W, 150lm	304.353.98
Black	
2.2W, 150lm	604.721.34

Over cabinet lighting



Over cabinet lights offer another way to light up items at the top of your cabinets where other lights won't reach.

To be completed with TRÅDFRI LED driver and FÖRNIMMA power supply cord sold separately. Dimmable with BILRESA remote control or in the IKEA Home smart app with DIRIGERA hub, sold separately



YTBURG cabinet lighting. You can bend, angle and move this slim lamp sideways to direct the soft light precisely over your cabinet. A perfect choice if there is little space between the top and the ceiling. Dimmable with BILRESA remote control or in the IKEA Home smart app with DIRIGERA hub, sold separately.

Black	605.278.91
White	005.168.19



TVÄRDRAG cabinet lighting. With this lamp, it's simple to direct the light precisely where you want it over your cabinet or wardrobe. And since the lamp head can be angled, you can even direct light on the contents if you like. Dimmable with BILRESA remote control or in the IKEA Home smart app with DIRIGERA hub, sold separately.

Black	605.168.21
-------	------------



Complete your combination with lighting

How to build

MITTLED LED cabinet lighting is easy to install by yourself.

- When you start building your METOD kitchen system, you must first consider the widths of your cabinets. E.g. for a cabinet with a width of 60 cm, you'll need the MITTLED lighting strip 60 cm too.
- Choose the number of MITTLED lighting strips that you need. Complete with TRÅDFRI driver, VÅGDAL connection cord and FÖRNIMMA power supply cord (sold separately).
- For the 10W driver you can connect up to 3 units to the driver, as long as the total wattage does not exceed 10W. For the 30W driver you can connect more than 9 lights, as long as the total wattage does not exceed 30W.
- Add BILRESA remote control to dim your lighting. Pair the dimmer to the TRÅDFRI driver and the entire combination will dim at the same time.
- Add the DIRIGERA hub to control MITTLED connected lighting from the IKEA Home smart app in different ways together with other smart lighting product in your home.
- When you start to plan your base cabinet solution start to think where you need a drawer light that will help you to find tools or see the content of the base cabinet. The drawer lights can be connected to ANSLUTA driver 19W.

Basic parts



MITTLED LED worktop lighting, lighting strip for drawer, spotlight



TRÅDFRI LED drivers



VÅGDAL connection cord



FÖRNIMMA power supply cord



FÖRNIMMA intermediate connection cord



BILRESA remote control

Installation accessories



DIRIGERA hub

How to mount integrated lighting on METOD kitchen

There are a few different ways to mount integrated lighting on METOD kitchen solutions, see examples below.

The detailed information on how to do this is available in the Assembly Instructions.

METOD integrated lighting



Lighting strip under wall cabinet



Spotlight in cabinet



Drawer lighting



Over cabinet lighting

Lighting for KNOXHULT

SKYDRAG series



Lighting creates atmosphere in homes and makes everyday life easier.



SKYDRAG LED worktop/wardrobe lighting strip with sensor, dimmable.

40 cm

White 504.395.88

Anthracite 904.396.28

60 cm

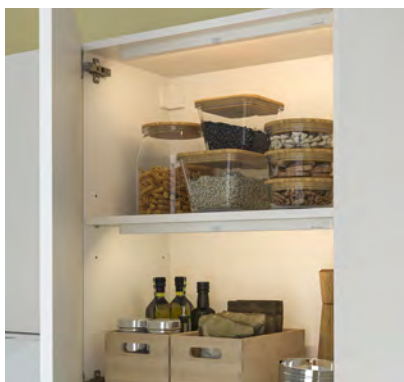
White 304.395.89

Anthracite 304.396.12

80 cm

White 104.395.90

KÖLVATTEN series



With a slim design, this worktop light is easy to place inside a cabinet with included fittings. You can also place it inside drawers, since the light is battery-operated, with no messy cables. The sensor reacts to movement at a distance of 1.5 m and automatically turns off after 60 sec.



KÖLVATTEN LED lighting with sensor.

30 cm

White/battery-operated 605.224.88

Grey/battery-operated 005.941.76

50 cm

White/battery-operated 205.689.87

Grey/battery-operated 205.941.75

70 cm

White/battery-operated 005.689.88

Grey/battery-operated 805.941.77

GÖMPYSSLING



GÖMPYSSLING is a battery-operated hero with a sensor that automatically turns on when you open your cabinet door and turns off 10 seconds after closing it. The attached gel pad helps you easily install anywhere, since there are no cables or plugs necessary.



GÖMPYSSLING LED lighting with sensor, 2-p.

7 cm

White/battery-operated 806.023.75

Complete your combination with lighting

How to build

SKYDRAG LED cabinet lighting is easy to install by yourself.

- When you start building your system, you must first consider the widths of your cabinets. E.g. for a cabinet with a width of 60 cm, you'll need the SKYDRAG lighting strip 60 cm to.
- Choose the number of SKYDRAG lighting strips that you need.
- Add the TRÅDFRI driver, you can connect up to 3 or 9 units to the driver, as long as the total wattage does not exceed 10W or 30W. TRÅDFRI drivers need to be connected to the plug with a FÖRNIMMA power cable.
- BILRESA remote control to dim your lighting. Pair the dimmer to the TRÅDFRI driver and the entire combination will dim at the same time.
- Add the DIRIGERA hub to control SKYDRAG connected lighting from the IKEA Home smart app in different ways together with other smart lighting product in your home.

Basic parts



SKYDRAG LED worktop/wardrobe lighting strip with sensor or KÖLVATTEN LED lighting with sensor.



TRÅDFRI LED drivers



FÖRNIMMA power supply cord



FÖRNIMMA intermediate connection cord



BILRESA remote control

Installation accessories



DIRIGERA hub

Cords and IKEA LED driver



FÖRNIMMA power supply cord
3.5 m. With this cord, you can connect up to 10 series connected lamps to the power grid - and turn on, turn off and dim all of them at the same time with BILRESA remote control and STYRBAR remote control.

504.468.81



FÖRNIMMA intermediate connection cord. Can be used as a direct connection between TRÅDFRI LED drivers, e.g. between two sections of wall cabinets, with one single connection to the mains supply.

L2 m 303.946.99



ANSLUTA LED driver 19W. Use this driver if you want turn all connected light sources on and off with a single switch.

White 804.058.41

How to mount KÖLVATTEN for KNOXHULT kitchen series



Inside cabinet



Inside drawer

Smart home

It's easy to create smarter everyday kitchen moments with lighting. By connecting TRÅDFRI driver to our hub for smart products, you get even more out of it and can also control it, together with other smart products, in the IKEA Home smart app.



DIRIGERA hub.
The hub is the heart of a smart home as it enables you to connect and control your smart products in the IKEA Home smart app. With the app, you can dim lights, adjust speakers, control rooms, connect to voice assistants, and more.

White	105.034.06
-------	------------



TRÅDFRI LED driver. To be completed with FÖRNIMMA power supply cord, sold separately. Can be used with BILRESA remote control and DIRIGERA hub.

Up to 10W	503.561.87
Up to 30W	603.426.56



New

BILRESA remote control, white.

Smart/scroll wheel	906.174.56
Smart/dual button	706.178.72



We continuously update the IKEA Home smart app with new and improved features for an even more fun and convenient way to use your smart home.



Worktops

Your kitchen is the heart of your home, it's a room for everyone! How it performs and how it looks are two important factors. Even though doors and drawer fronts are the main style decision you make when updating your kitchen, your worktop can have a big impact on the overall look. However, the perfect worktop is not just about completing the look of your kitchen, it has an impact on its functionality too. When picking the right worktop there are many factors to

consider, including your style, durability, maintenance, lifestyle and cost. Our worktops are available in pre-cut and custom-made as well as in a wide range of durable materials, finishes and thicknesses. Each surface has unique properties, with differing levels of water, wear and heat resistance.

How to choose your worktop:

01

What's your budget?
A stylish look does not have to cost a fortune, our worktops are available in wide range of materials and expressions, pre-cut as well as custom-made to perfectly fit your style, needs and wallet.

02

What kind of material do you prefer? When deciding on material, consider how robust you need your worktop to be, how much you are prepared to look after it, and how you want it to look in your kitchen scheme.

03

Custom-made worktops are made to fit your kitchen layout, you can order the exact length and depth you need, as well as cut-outs for your sink, tap and hob. **Pre-cut worktops** are available in different sizes, you can take yours home today and cut it to desired length.

25

All worktops have a 25-year guarantee. Find out more on page 138

Built to last

When we test our worktops we put them up against everything they'll face in your kitchen: liquids, oil, steam, heat, thumps, bumps and scratches. Once we're done we're so sure our worktops will last, we guarantee it.



Materials

Laminate

Laminate worktops are affordable, easy to maintain and there are lots of colours and expressions to choose from. They are made of laminate pressed onto particleboard. Both heat and pressure are applied to harden the surface and create a durable worktop.

Thick veneer

Thick wood veneer worktops offer the natural colour and grain of wood, adding warmth to your kitchen. They are pre-treated for quicker installation and can be sanded and treated when needed. The thick veneer technique allows us to create patterns and expressions that are otherwise difficult and expensive to achieve – with the efficient use of natural resources.

Quartz composite

Quartz composite worktops are extremely durable, resistant to scratches, moisture and impacts. They are made by combining ground quartz (one of the hardest materials in nature), resins and pigments. This creates a very hard, non-porous surface that is smooth, easy to clean and does not require any sealing treatment. Our quartz composite worktops are 2 cm thick and come in a wide variety of expressions.

High-pressure porcelain

High-pressure porcelain is an extremely hard-wearing material, produced by applying high heat and pressure to fuse minerals together. The result is a non-porous surface that's hygienic and highly resistant to heat and scratches – hot pots and sharp knives won't cause damage.

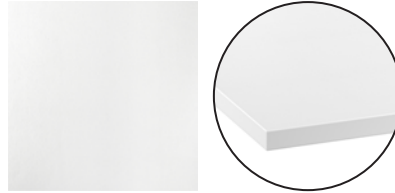
Glass composite

Our glass composite worktops are our most sustainable offer within the composite stone material segment and is made from recycled glass. Inspired by nature, the durable, non-porous surface offers a sleek and expressive look that is stain- and moisture-resistant - and easy to clean too.

Laminate worktop 2.2 cm thick



MÖCKLERYD worktop in white pairs up easily with any kitchen décor bringing a clean, fresh look to your space. The laminate surface is durable and easy to keep clean. Bring the worktop home today and cut to size according to your needs.



MÖCKLERYD worktop, white, D63.5 cm.

Pre-cut

L123×T2.2 cm

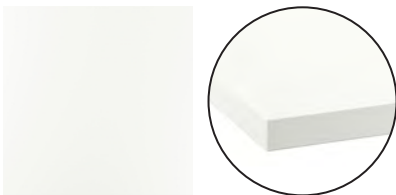
605.821.80

Laminate worktops 2.8 cm thick



EKBACKEN and JÄRSTORP laminate worktops are 2.8 cm thick. They are durable, easy to maintain, and come in an extensive range of colours and textures (standard and high gloss).

EKBACKEN and JÄRSTORP laminate worktops are available as pre-cut or custom-made, with a few edge options. Pre-cut worktops can be cut to the exact length you need and finished with the edge strip included in the package.



JÄRSTORP worktop, white/laminate, D63.5 cm.

Pre-cut:

L186×T2.8 cm

105.896.50

L246×T2.8 cm

505.896.48

Custom-made:*



D30-45×T2.8 cm

D45.1-63.5×T2.8 cm

D63.6-125×T2.8 cm



EKBACKEN worktop, high-gloss white, D63.5 cm.

Custom-made:*



D30-45×T2.8 cm

D45.1-63.5×T2.8 cm

D63.6-125×T2.8 cm



EKBACKEN worktop, white lively marble effect/laminate, D63.5 cm.

Pre-cut:

L186×T2.8 cm

105.703.49

L246×T2.8 cm

705.703.51

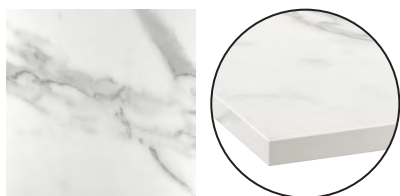
Custom-made:*



D30-45×T2.8 cm

D45.1-63.5×T2.8 cm

D63.6-125×T2.8 cm




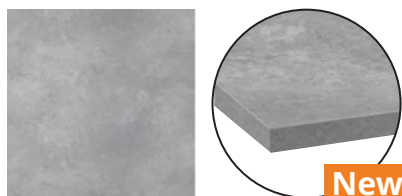
EKBACKEN worktop, white marble effect, D63.5 cm.

Pre-cut

L186×T2.8 cm	206.090.30
L246×T2.8 cm	606.090.33

Custom-made:*

 D30-45×T2.8 cm	
D45.1-63.5×T2.8 cm	
D63.6-125×T2.8 cm	




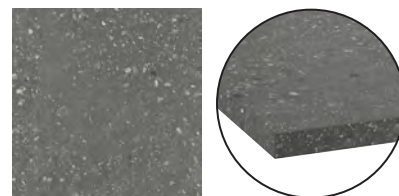
EKBACKEN worktop, light grey concrete effect, D63.5 cm.

Pre-cut:

L186×T2.8 cm	306.162.71
L246×T2.8 cm	406.462.75

Custom-made:*

 D30-45×T2.8 cm	
D45.1-63.5×T2.8 cm	
D63.6-125×T2.8 cm	




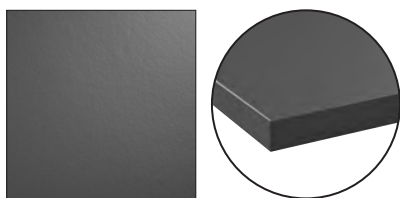
EKBACKEN worktop, grey terrazzo effect, D63.5 cm.

Pre-cut

L186×T2.8 cm	406.090.10
L246×T2.8 cm	806.090.13

Custom-made:*

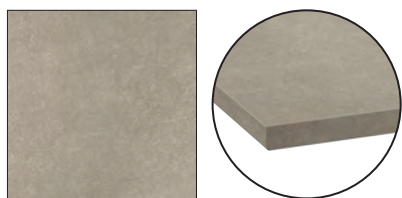
 D30-45×T2.8 cm	
D45.1-63.5×T2.8 cm	
D63.6-125×T2.8 cm	



JÄRSTORP worktop, grey, D63.5 cm.

Pre-cut

L186×T2.8 cm	805.966.28
L246×T2.8 cm	005.966.32




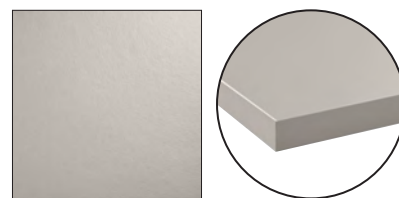
EKBACKEN worktop, grey-beige stone effect, D63.5 cm.

Pre-cut

L186×T2.8 cm	806.043.17
L246×T2.8 cm	206.043.20

Custom-made:*

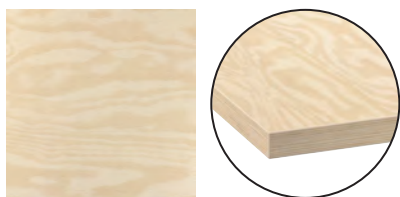
 D30-45×T2.8 cm	
D45.1-63.5×T2.8 cm	
D63.6-125×T2.8 cm	



JÄRSTORP worktop, beige, D63.5 cm.

Pre-cut

L186×T2.8 cm	605.966.29
L246×T2.8 cm	205.966.31




EKBACKEN worktop, plywood effect, D63.5 cm.

Pre-cut

L186×T2.8 cm	706.090.42
L246×T2.8 cm	806.090.46

Custom-made:*

 D30-45×T2.8 cm	
D45.1-63.5×T2.8 cm	
D63.6-125×T2.8 cm	




EKBACKEN worktop, ash effect, D63.5 cm.

Pre-cut

L186×T2.8 cm	503.376.17
L246×T2.8 cm	903.376.20

Custom-made:*

 D30-45×T2.8 cm	
D45.1-63.5×T2.8 cm	
D63.6-125×T2.8 cm	

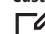


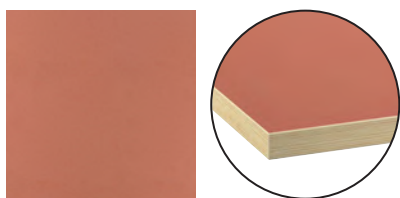
EKBACKEN worktop, brown walnut effect, D63.5 cm.

Pre-cut

L186×T2.8 cm	904.429.80
L246×T2.8 cm	104.429.84

Custom-made:*

 D30-45×T2.8 cm	
D45.1-63.5×T2.8 cm	
D63.6-125×T2.8 cm	




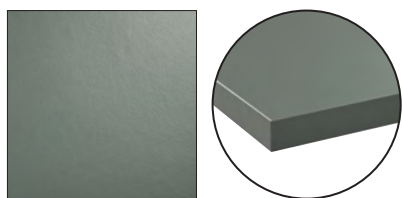
EKBACKEN worktop, terracotta effect, D63.5 cm.

Pre-cut

L186×T2.8 cm	906.090.60
L246×T2.8 cm	106.090.64

Custom-made:*

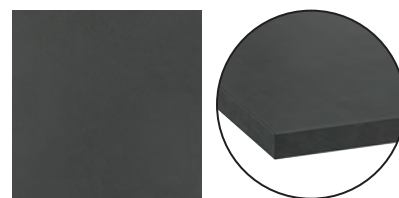
 D30-45×T2.8 cm	
D45.1-63.5×T2.8 cm	
D63.6-125×T2.8 cm	



JÄRSTORP worktop, green, D63.5 cm.

Pre-cut

L186×T2.8 cm	605.966.29
L246×T2.8 cm	805.966.33

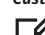


EKBACKEN worktop, black, D63.5 cm.

Pre-cut

L186×T2.8 cm	105.896.74
L246×T2.8 cm	205.896.78

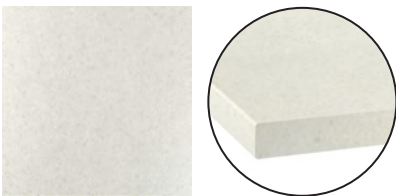
Custom-made:*

 D30-45×T2.8 cm	
D45.1-63.5×T2.8 cm	
D63.6-125×T2.8 cm	

Laminate worktops 3.8 cm thick






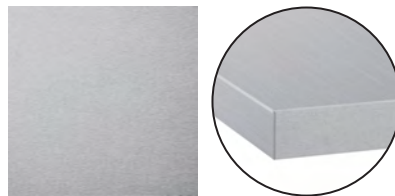
SÄLJAN laminate worktops are 3.8 cm thick. They are durable, easy to maintain, and come in a wide range of colours. SÄLJAN laminate worktops are available as pre-cut or custom-made. Pre-cut worktops can be cut into the exact length you need and finished with the edge strip included in the package.






SÄLJAN worktop, white/light grey stone effect/laminate, D63.5 cm.

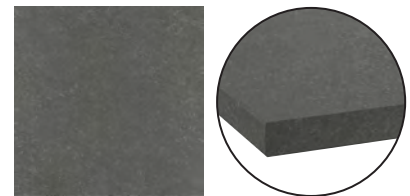
Pre-cut	
L186×T3.8 cm	205.568.71
L246×T3.8 cm	805.568.73

Custom-made:*	
 D30-45×T3.8 cm	
 D45.1-63.5×T3.8 cm	
 D63.6-125×T3.8 cm	






SÄLJAN worktop, aluminum effect.

Custom-made:*	
 D30-45×T3.8 cm	
 D45.1-63.5×T3.8 cm	
 D63.6-125×T3.8 cm	



SÄLJAN worktop, dark grey stone effect, D63.5 cm.




Pre-cut	
L186×T3.8 cm	906.043.31
L246×T3.8 cm	306.043.34

Custom-made:*	
 D30-45×T3.8 cm	
 D45.1-63.5×T3.8 cm	
 D63.6-125×T3.8 cm	



SÄLJAN worktop, oak effect, D63.5 cm.

Pre-cut	
L186×T3.8 cm	604.391.73
L246×T3.8 cm	804.392.09

Custom-made:*	
 D30-45×T3.8 cm	
 D45.1-63.5×T3.8 cm	
 D63.6-125×T3.8 cm	



EKBACKEN worktop, light grey
concrete effect/laminate, 306.162.71

Thick veneer worktops 2.8 and 3.8 cm thick



Natural and hard-wearing, wood brings a warm feeling to your kitchen and makes each worktop unique. With thick veneer worktops, a 3 mm layer of wood covers a particleboard core to add excellent stability.

This construction makes the worktop less sensitive to humidity and much less likely than solid wood to bend, split or crack. Also, with this technique, we can create new unique expressions using less wood, and reducing the impact on the environment.

The worktops are pre-treated with hard wax oil to create an easy-care surface for immediate use. Over time, it will only look better, gaining in character. They can be sanded and treated when needed meaning that they will age gracefully.

Thick veneer worktops come in the following crafted patterns: narrow stave, full plank, butcher-block, fine line and chevron.

Thick veneer worktops are available both as pre-cut (take home today) and custom-made option. Pre-cut worktops can be cut into the exact length you need and finished with the edge strip included in the package.



Ash

Ash is a blonde hard wood with a beautiful grain pattern. Ash is a tough and strong, yet elastic material with great resilience and finishing properties. It gets gradually darker with age. In its natural form it is heavy and gives a very solid feel.



Bamboo

Bamboo is a durable and stable hardwood with a uniform texture. The natural color of bamboo is similar to that of beech wood and adds a warm, natural feel to the kitchen – year after year. The material is renewable and sustainable, which makes it a great environmental choice.



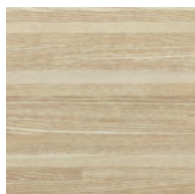
Oak

Oak wood is exceedingly strong, heavy and durable. It is an attractive light colour with a prominent grain. Its colour ranges from light brown to a rich reddish-brown and it darkens beautifully with age.



Walnut

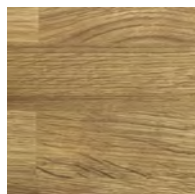
Walnut wood is relatively heavy, hard and resilient. The natural colour light brown to dark chocolate brown adds warmth to your kitchen decor. Walnut gets lighter in colour with age. It has a rich variation in colour and a decorative, curved grain pattern.

**PINNARP worktop, ash.****Pre-cut:**

L186×T3.8 cm	003.722.98
L246×T3.8 cm	003.723.02

Custom-made:*

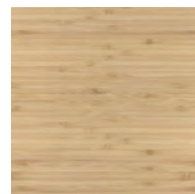
D30-45×T2.8 cm
D45.1-63.5×T2.8 cm
D63.6-125×T2.8 cm

**KARLBY worktop, oak.****Pre-cut:**

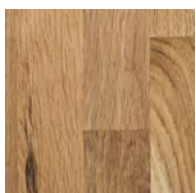
L186×T3.8 cm	703.351.89
L246×T3.8 cm	603.351.99

Custom-made:*

D30-45×T2.8 cm
D45.1-63.5×T2.8 cm
D63.6-125×T2.8 cm

**HOLMARED worktop, bamboo/veneer.****Pre-cut**

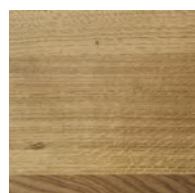
L186×T2.8 cm	305.573.80
L246×T2.8 cm	705.573.83

**VRENA worktop, oak.****Pre-cut:**

L186×T2.8cm	004.371.67
L246×T2.8cm	704.371.59

Custom-made:*

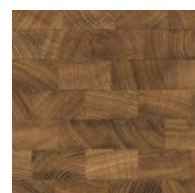
D30-45×T2.8 cm
D45.1-63.5×T2.8 cm
D63.6-125×T2.8 cm

**MÖLLEKULLA worktop, oak.****Pre-cut:**

L186×T3.8 cm	702.992.47
L246×T3.8 cm	502.992.48

Custom-made:*

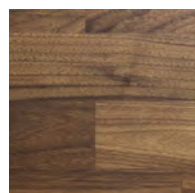
D30-45×T2.8 cm
D45.1-63.5×T2.8 cm
D63.6-125×T2.8 cm

**SKOGSÅ worktop, oak.****Pre-cut**

L186×T3.8 cm	803.829.86
L246×T3.8 cm	003.829.90

Custom-made:*

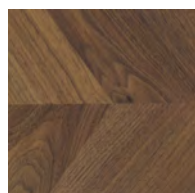
D30-45×T2.8 cm
D45.1-63.5×T2.8 cm
D63.6-125×T2.8 cm

**KARLBY worktop, walnut.****Pre-cut:**

L186×T3.8 cm	303.351.91
L246×T3.8 cm	003.352.01

Custom-made:*

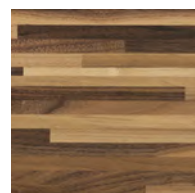
D30-45×T2.8 cm
D45.1-63.5×T2.8 cm
D63.6-125×T2.8 cm

**BARKABODA worktop, walnut.****Pre-cut**

L186×T3.8 cm	903.314.68
L246×T3.8 cm	503.314.70

Custom-made:*

D30-45×T2.8 cm
D45.1-63.5×T2.8 cm
D63.6-125×T2.8 cm

**PINNARP worktop, walnut.****Pre-cut:**

L186×T3.8 cm	404.662.28
L246×T3.8 cm	204.662.29

Custom-made:*

D30-45×T2.8 cm
D45.1-63.5×T2.8 cm
D63.6-125×T2.8 cm

Quartz composite worktops 2.0cm thick



KASKER quartz composite worktops come in matte or polished finishes, different thicknesses and colours. You can also choose between different edges for an even more personalised expression.

Quartz composite worktops have a smooth, non-porous surface. This makes them hygienic and resistant to stains and moisture, and they don't require sealing. As the quartz content is a natural material, you can expect slight variations in colour, and in the size, shape and distribution of particles. These slight variations are part of the beauty and charm of the material and make every worktop unique. Quartz composite worktops are available only as custom-made.

Additional charges will apply for services and customisation options. Book an appointment with an IKEA store to plan your worktop and receive complete price information.

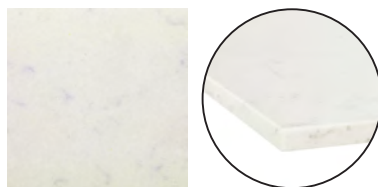


KASKER worktop, white quartz.

*Custom-made:**



T2.0 cm

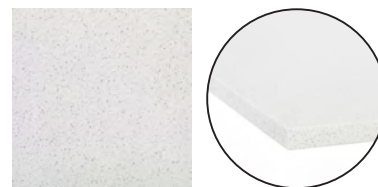


KASKER worktop, white marble effect/quartz.

*Custom-made:**



T2.0 cm

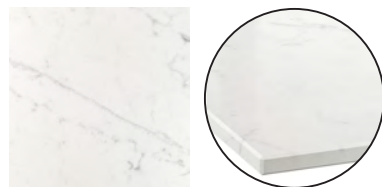


KASKER worktop, white mineral effect/quartz.

*Custom-made:**



T2.0 cm



KASKER worktop, white/light grey marble effect/quartz.

*Custom-made:**



T2.0 cm

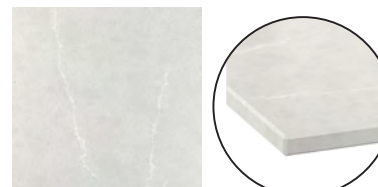


KASKER worktop, White/grey-beige marble effect/quartz.

*Custom-made:**



T2.0 cm



KASKER worktop, Light grey/beige marble effect quartz.

*Custom-made:**



T2.0 cm



KASKER worktop, dark beige marble effect/quartz.

*Custom-made:**



T2.0 cm



KASKER worktop, black white marble effect/quartz.

*Custom-made:**



T2.0 cm



KASKER worktop, black stone effect/quartz.

*Custom-made:**



T2.0 cm

Edge options



Straight



Chamfer



KASKER Custom made worktop, white/light grey marble effect

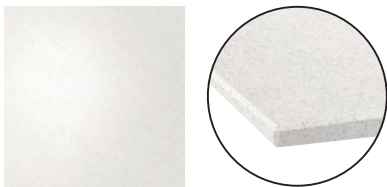
Glass composite 2.0 cm thick - Launches July 2026



Inspired by beautiful materials found in nature, we proudly present LOCKEBO custom-made worktops made from recycled glass.

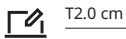
The durable, non-porous surface offers a sleek and expressive look that is stain- and moisture-resistant - and easy to clean too. The patterns vary in every single piece, making each one totally unique. Whether your style is traditional or modern, the smooth, hardwearing surface creates a seamless look with plenty of character. Simply put, LOCKEBO custom-made worktops made from recycled glass give you an elegant and distinctive appeal that you can love and feel good about in every way.

Additional charges will apply for services and customisation options. Book an appointment with an IKEA store to plan your worktop and receive complete price information.

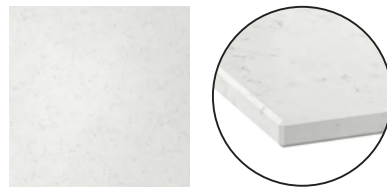


LOCKEBO worktop, white mineral effect/glass composite.

*Custom-made:**

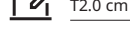


T2.0 cm

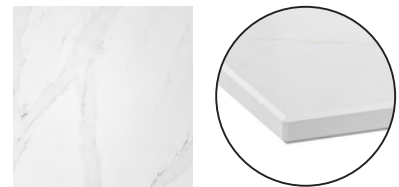


LOCKEBO worktop, white marble effect/glass composite.

*Custom-made:**

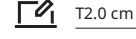


T2.0 cm

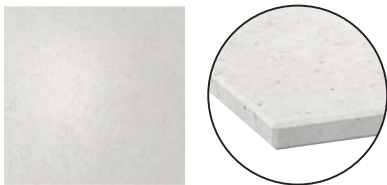


LOCKEBO worktop, white/grey-beige marble effect/glass composite.

*Custom-made:**

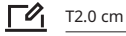


T2.0 cm

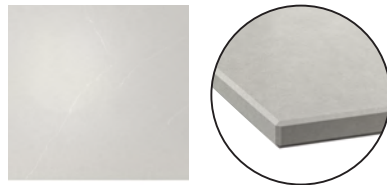


LOCKEBO worktop, light beige limestone effect/glass composite.

*Custom-made:**

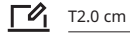


T2.0 cm



LOCKEBO worktop, light grey-beige marble effect/glass composite.

*Custom-made:**

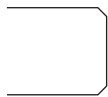


T2.0 cm price from €000/m²

Edge options



Straight



Chamfer

High-pressure porcelain worktops 2.0 cm thick



MÖCKLARP high-pressure porcelain worktops are created by fusing natural minerals together, making them extremely strong and durable enough to withstand the toughest daily use.

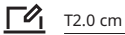
High-pressure porcelain worktops are highly resistant to heat and scratches – hot pots, water or sharp knives won't cause any damage, which is why they do not need to be re-surfaced or re-finished, ever. They have a non-porous surface that is fully stain-proof and easy to clean. They are the most hygienic solution available. High-pressure porcelain worktops are available only as custom-made.

Additional charges will apply for services and customisation options. Book an appointment with an IKEA store to plan your worktop and receive complete price information.

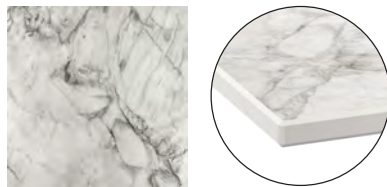


MÖCKLARP worktop, matt white/marble effect high pressure porcelain.

Custom-made:*



T2.0 cm

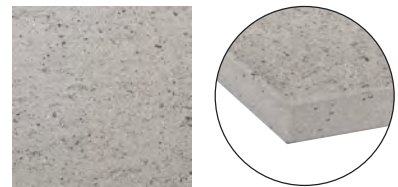


MÖCKLARP worktop, polished off-white/grey marble effect/high pressure porcelain.

Custom-made:*



T2.0 cm

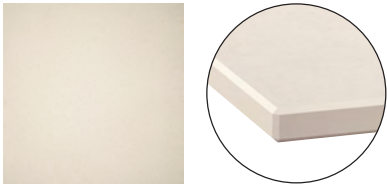


MÖCKLARP worktop, matt concrete effect/high pressure porcelain.

Custom-made:*



T2.0 cm



MÖCKLARP worktop, matt off-white/stone effect high pressure porcelain.

Custom-made:*



T2.0 cm

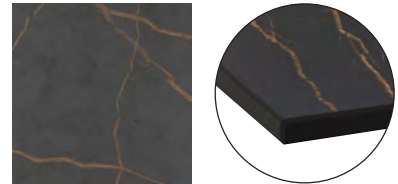


MÖCKLARP worktop, matt off-white/marble effect high pressure porcelain.

Custom-made:*



T2.0 cm

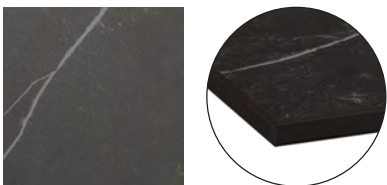


MÖCKLARP worktop, matt black/brown stone effect/high pressure porcelain.

Custom-made:*

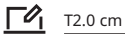


T2.0 cm

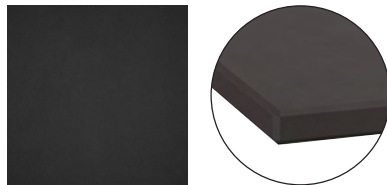


MÖCKLARP worktop, matt black/brown/marble effect high pressure porcelain.

Custom-made:*



T2.0 cm



MÖCKLARP worktop, matt black/stone effect high pressure porcelain.

Custom-made:*



T2.0 cm

Edge options



Straight



Chamfer

Worktop accessories

Bar solution

Make your kitchen the social hub of your home with a bar solution. It gives you more space for working and makes a great place to eat and hang out with family and friends.



UTBY leg, stainless steel. UTBY leg gives steady support to your worktop, also on uneven floors.
88 cm 305.036.60



Protection and support for your worktop



FIXA worktop support fitting. FIXA worktop support fitting keeps your worktop stable and sturdy after installation.

Galvanised 702.746.28



FENSJÖ diffusion barrier. Prevents damage to worktops caused by hot steam released from opened dishwashers and ovens.

Transparent 006.135.42



TRIXIG wood treatment oil. For indoor use.

500 ml 305.811.15



TRIXIG wood treatment oil. Food contact approved.

250 ml 005.810.65

Finishing touches

Get the most out of your worktop with our worktop accessories and wall edging strips.



BASKETORP wall finishing strip, 250 cm. Fills the gap between the wall and worktop. Fits all IKEA worktops. Can be used with various materials, such as tiles.

Anthracite/aluminium	705.911.60
Stainless steel colour/aluminium	305.911.62
White/aluminium	505.911.61



HANSBYN wall edging strip, 246 cm. Solid wood can be cut to the desired length, sanded and surface treated as needed. Can be used against a tiled wall as well.

Birch	904.890.05
Oak	604.612.77
Walnut	204.890.04



HANSBYN
Wall edging strip. Oak,
246 cm. 604.612.77

Big advantages of a custom-made worktop

Your custom-made worktop is made to fit your kitchen layout perfectly, with the least number of joints. You can order the exact length and depth you need for your kitchen island or bar solution as well as cut-outs for your sink, tap and hob.



Custom-made worktops offer the freedom to design a kitchen island that perfectly fits your space and lifestyle, with customizable lengths, depths, and layouts. You can even add a waterfall solution, creating a multifunctional centerpiece for cooking, dining, and entertaining.



Custom-made worktops provide the flexibility and design freedom to seamlessly integrate features like an underglued sink, cut-out for a hob and tap hole, all tailored to your exact needs. They can also be perfectly coordinated with a custom-made wall panel for a coherent and polished look.



Custom-made worktops and wall panels let you design a kitchen that perfectly fits your space, style, and needs. From tailored dimensions and built-in bar solutions to integrated features like sinks, hobs, and tap holes, every detail can be customized for a functional and coordinated result.

How to buy a custom-made worktop

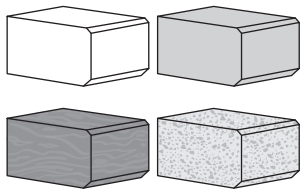


Custom-made the way you want it

Use our Kitchen Planner to design a custom-made worktop for your kitchen. You get an instant estimate of what everything will cost, too. You can choose different worktop in different styles and materials to personalise your kitchen just the way you want it. The Kitchen Planner makes it super easy to try out different options and compare their prices. Or book a Kitchen Planning Appointment today.

Check it out at [IKEA.co.uk](https://www.ikea.co.uk)

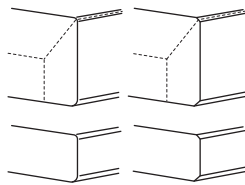
01



Material and colour

Choose between laminate, thick veneer, quartz composite, glass composite and high-pressure porcelain, then choose a colour that makes the kitchen your own.

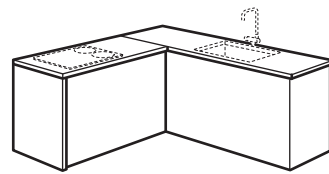
02



The worktop profiles

Choose the desired profile for the edges. Depending on the material you've chosen for your worktop, you have different options.

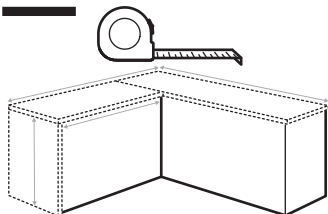
03



Cutouts

Select the cutouts for your kitchen space.

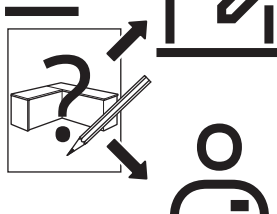
04



Take measurements

Then start to measure to see what size and shape of worktop you need. If you would like help with this, or with anything to do with measuring your kitchen, our measuring service can come to your home.

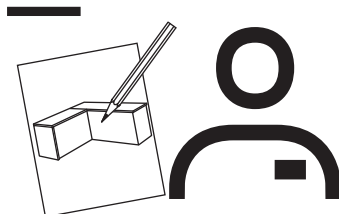
05



We're here to help

To design your custom-made worktop get help from an IKEA co-worker in the kitchen department at your local store, or use our online calculator.

06

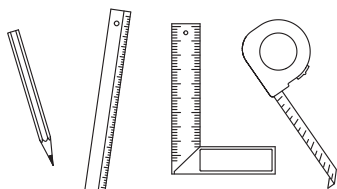


Order

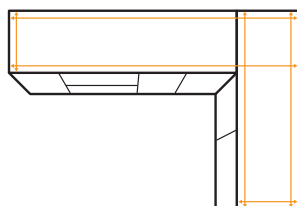
When you feel ready to order your custom-made worktop, please contact an IKEA co-worker in the kitchen department at your local store or online.

Measuring your worktop

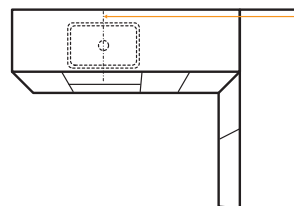
It is important to get the measurements for your worktop right, especially if you plan to order a custom-made one.



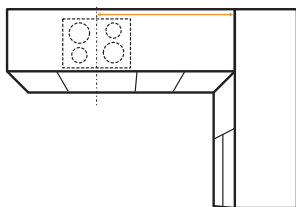
01 Have proper tools handy. Carpenters rule/tape measure, pencil and angle square.



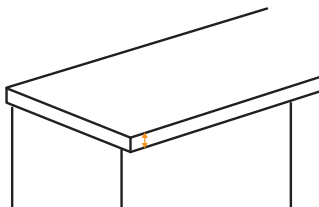
02 Measure your worktop starting from one corner to the opposite end. Secure that all length and depth measurements are taken from at least two places. Don't forget to add 30 mm to the length of cover panel and overhang.



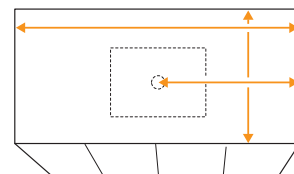
03 Measure from the corner of the worktop to the centre of the base cabinet where your sink is located.



04 Then measure from the corner to the centre of your hob. Notice where the joints are and keep this in mind.



05 Measure the thickness of your worktop.



06 If you have a kitchen island, don't forget to take measurements of your existing worktop, including the centre of cut-outs.

We will do it for you

Do you want a customised worktop, but feel uncertain about the measurements? No need. We will come to your home to measure and give you a quote.

When your new worktop is ready, we deliver and install it for you. We also take all the packaging with us for recycling.



Measuring



Delivery



Installation

Read more about our services on [page 04](#) or at [IKEA.co.uk](#)

Wall panels

Walls to match your style!

Adding wall panels is a quick and easy way to update your kitchen with new colors and texture. Our durable and easy-to-clean wall panels protect your walls from splashes and stains when you are cooking. They give you a neat finish where your worktop meets the wall and add a subtle accent of color to your

kitchen walls creating a stylish look. You can choose wall panels in various colors, materials and expressions, some are even double-sided! But if you want to go very personal, you can have your own customised one.

How to choose your wall panel:

01

What's your budget? A stylish look does not have to cost a fortune, our wall panels are available in a wide range of materials and expressions, pre-cut as well as custom-made to perfectly fit your style, needs and wallet.

02

What kind of material and expression do you prefer? The material of the wall panel you choose is just as important as the colour. Your wall panel is always going to be right up against your worktop, make sure the two materials and colours work well together.

03

Your wall panel has to end up somewhere! Where it ends is up to you – along the length of the wall, up to the bottom of your wall cabinets, up to the ceiling in areas where there are no cabinets (over the sink or over the hob).

25

All custom-made wall panels have a 25-year guarantee. Find out more on page 138.



Materials

Laminate

Laminate wall panels offer a wide variety of colors, patterns and textures needed to personalize your kitchen space. They are resistant to water splashes, stains and grease, which makes them a durable and low maintenance choice.

Quartz composite

Quartz composite wall panels are extremely durable, resistant to scratches, moisture and impacts. They are made by combining ground quartz (one of the hardest materials in nature), resins and pigments. This creates a very hard, non-porous surface that is smooth and come in a wide variety of expressions.

High-pressure porcelain

High-pressure porcelain is an extremely hard-wearing material, produced by applying high heat and pressure to fuse minerals together. The result is a non-porous surface that's hygienic and highly resistant to heat and scratches.

Glass composite

Our glass composite wall panels are our most sustainable offer within the composite stone material segment and is made from recycled glass. Inspired by nature, the durable, non-porous surface offers a sleek and expressive look that is stain- and moisture-resistant – and easy to clean too.

Custom-made wall panels

Complement your custom-made worktop with a matching wall panel made to perfectly fit your kitchen layout.

Additional charges will apply for services and customisation options. Book an appointment with an IKEA store to plan your wall panel and receive complete price information.

High-pressure porcelain Thickness 2 cm.

A hardwearing wall panel with exceptional benefits regarding hygiene and easy cleaning. It will withstand the most vigorous of daily wear, from steam to splashes. For perfect color and pattern match, our high-pressure

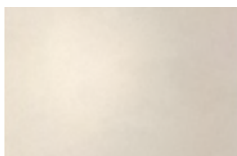
porcelain wall panels are made from the same high-quality material as our high-pressure porcelain worktops.



RUNSBÄCK custom-made wall panel, matt off-white/marble effect high pressure porcelain

 Custom-made:*

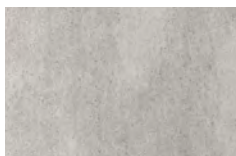
T2.0 cm



RUNSBÄCK custom-made wall panel, matt off-white/stone effect high pressure porcelain.

 Custom-made:*

T2.0 cm



RUNSBÄCK custom-made wall panel, matt concrete effect/high pressure porcelain.

 Custom-made:*

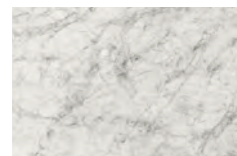
T2.0 cm



RUNSBÄCK custom-made wall panel, matt white/marble effect high pressure porcelain.

 Custom-made:*

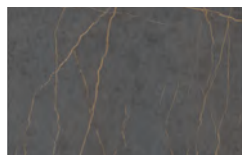
T2.0 cm



RUNSBÄCK custom-made wall panel, polished off-white/grey marble effect/high pressure porcelain.

 Custom-made:*

T2.0 cm



RUNSBÄCK custom-made wall panel, matt black/brown stone effect/high pressure porcelain

 Custom-made:*

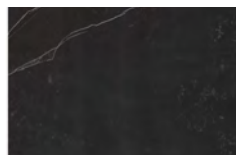
T2.0 cm



RUNSBÄCK custom-made wall panel, matt black/stone effect porcelain.

 Custom-made:*

T2.0 cm



RUNSBÄCK custom-made wall panel, matt black/brown/marble effect high pressure porcelain.

 Custom-made:*


T2.0 cm

Quartz composite Thickness 2 cm.


Our quartz composite wall panels offer quality of quartz combined with high durability, resistance to stains, scratches and moisture as well as easy maintenance.

For perfect color and pattern match, our quartz wall panels are made from the same high-quality material as our quartz composite worktops.




RÅHULT custom-made wall panel, white.
 *Custom-made:**
 T2.0 cm




RÅHULT custom-made wall panel, white marble effect.
 *Custom-made:**
 T2.0 cm




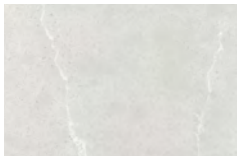
RÅHULT custom-made wall panel, white mineral effect.
 *Custom-made:**
 T2.0 cm



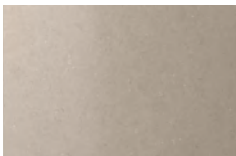
RÅHULT custom-made wall panel, white/light grey marble effect.
 *Custom-made:**
 T2.0 cm




RÅHULT custom-made wall panel, white/grey-beige marble effect/quartz.
 *Custom-made:**
 T2.0 cm




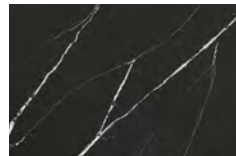
RÅHULT custom-made wall panel, light grey/beige marble.
 *Custom-made:**
 T2.0 cm




RÅHULT custom-made wall panel, dark beige marble effect.
 *Custom-made:**
 T2.0 cm



RÅHULT custom-made wall panel, black stone effect/quartz.
 *Custom-made:**
 T2.0 cm

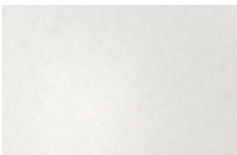



RÅHULT custom-made wall panel, black/white marble effect.
 *Custom-made:**
 T2.0 cm

Glass composite (Launches July 2026) Thickness 1.2 cm

Our glass composite wall panels are made from recycled glass. Inspired by nature, the durable, non-porous surface offers a sleek and expressive look that is stain- and moisture-resistant - and easy to clean too. For per-

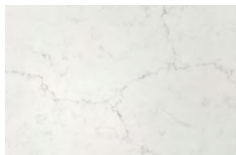
fect color and pattern match, our glass composite wall panels are made from the same high-quality material as our glass composite worktops.



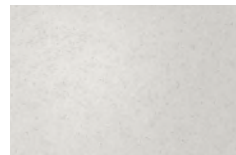
TÅRNHULT custom-made wall panel, white mineral/glass composite.
*Custom-made:**




TÅRNHULT custom-made wall panel, white marble effect/glass composite.
*Custom-made:**

TÅRNHULT custom-made wall panel, white/grey-beige marble effect/glass composite.
*Custom-made:**

TÅRNHULT custom-made wall panel, light beige limestone effect/glass composite.
*Custom-made:**




TÅRNHULT custom-made wall panel, light grey-beige marble/glass composite.
*Custom-made:**


Laminate Thickness 1.3 cm.

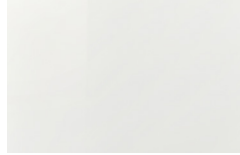
Our laminate wall panels are resistant to water splash-
es, stains and grease, which makes them a durable and
low maintenance choice. They can be used across the
kitchen area, except for behind gas hobs. For perfect

colour and pattern match, our laminate wall panels
are made from the same high-quality material as our
laminate worktops.



SIBBARP custom-made wall panel, white laminate.

*Custom-made:**



SIBBARP custom-made wall panel, white high-gloss laminate.

*Custom-made:**



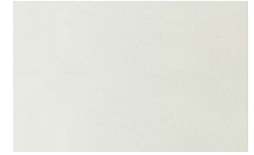
SIBBARP custom-made wall panel, white marble effect/laminate.

*Custom-made:**



SIBBARP custom-made wall panel, white lively marble effect/laminate.

*Custom-made:**



SIBBARP custom-made wall panel, white/light grey stone effect/laminate.

*Custom-made:**



New

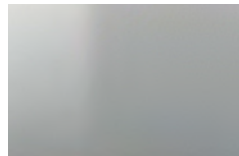
SIBBARP custom-made wall panel, light grey concrete effect/laminate.

*Custom-made:**



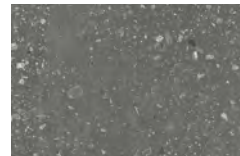
SIBBARP custom-made wall panel, aluminium effect laminate.

*Custom-made:**



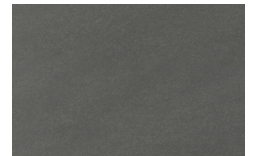
SIBBARP custom-made wall panel, stainless steel effect laminate.

*Custom-made:**



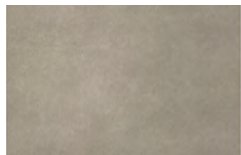
SIBBARP custom-made wall panel, grey terrazzo effect/laminate

*Custom-made:**



SIBBARP custom-made wall panel, dark grey stone effect/laminate.

*Custom-made:**



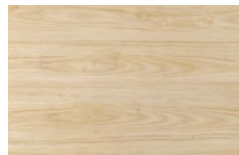
SIBBARP custom-made wall panel, grey-beige stone effect/laminate.

*Custom-made:**



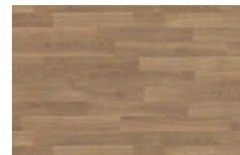
SIBBARP custom-made wall panel, plywood effect/laminate.

*Custom-made:**



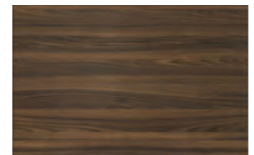
SIBBARP custom-made wall panel, ash effect laminate.

*Custom-made:**



SIBBARP custom-made wall panel, oak effect/laminate.

*Custom-made:**



SIBBARP custom-made wall panel, brown walnut effect/laminate.

*Custom-made:**



SIBBARP custom-made wall panel, terracotta effect/laminate.

*Custom-made:**



SIBBARP custom-made wall panel, black/laminate.

*Custom-made:**



LYSEKIL wall panels

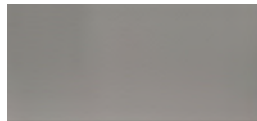
Our LYSEKIL wall panels are available to take home today and easy to install. You simply cut them to the right size and put them up on the wall. Follow the included

assembly instructions and it can't go wrong. Combine LYSEKIL wall panels with matching worktops for a perfectly coordinated look.



LYSEKIL wall panel, double sided white lively marble effect/white marble effect

L119.6×55 cm 306.090.77



New

LYSEKIL wall panel, double sided stainless steel/brass

L119.6×55 cm 806.233.92



New

LYSEKIL wall panel, double sided light grey concrete effect/matt white

L119.6×55 cm 106.229.23



LYSEKIL wall panel, double sided black/plywood effect.

L119.6×55 cm 706.090.75



LYSEKIL rail for wall panel, aluminum.

L120×55.4 cm 803.351.17



Sinks

A busy place in the kitchen

The sink and the area around it, is one of the busiest places in the kitchen. You use it for everything from preparing food and rinsing vegetables, to storing dirty dishes and washing up. To make

the activities as easy as possible, choose a sink and sink accessories that match your needs and the way you work in the kitchen.

How to choose your sink

01

How much space have you allocated for the sink? Our sink cabinets are 40, 60 or 80 cm wide.

02

Think about how you prepare food, but also how you wash up. Do you have a dishwasher or do you wash the dishes by hand? Do you need one bowl, two bowls or a sink with drainboard?

03

Complete your sink with sink accessories that help you organise the area in and around the sink, both when you prepare food and when you wash up

25

We test our sinks to ensure they can withstand the demand of everyday life in the kitchen. That's why all our sinks come with a free 25-year guarantee (except FYNDIG). Find out more on page 138.



Our range of sinks

Single bowl sinks

If space is an issue, one single bowl is a good option. Plus, in a big single bowl you can easily wash large pots and pans. Combine with sink accessories to make the bowl as functional as possible

Double bowl sinks

Having two bowls is ideal if you have a lot going on at the same time. For example, if one of the bowls is piling up with dirty dishes, you can still rinse off vegetables and alike in the other.

1½ bowl sinks

A one and a half bowl sink gives you the same advantages as a double bowl sink, but in a smaller area.

Sinks with drainboard

A sink with a drainboard is ideal for drying dishes as the sloping surface make excess water flow back into the bowl. All our sinks with drainboard are reversible, so you can choose if you want the drainboard to the left or to the right.

Fits 40 cm cabinets



BOHOLMEN inset sink, 1 bowl, 47x30 cm. Sink in stainless steel, a hygienic, strong and durable material that's easy to keep clean. Under the sink is a sound-absorbing material which reduces resonances in the metal when using the sink, thus lowering the sound level. Can be under-glued. LILLVIKEN lid and water trap/strainer is included in the price.

Stainless steel 991.575.01



Under-glued available



VRESJÖN inset sink, 1 bowl, 37x44 cm. Sink in stainless steel, a hygienic, strong and durable material that's easy to keep clean. Sleek and slim adding an elegant touch to your kitchen. Can be under-glued. LILLVIKEN lid and water trap/strainer is included in the price.

Stainless steel 094.257.06



Under-glued available



KILSVIKEN inset sink, 1 bowl, 36x46 cm. The natural colour variations of the quartz make each KILSVIKEN sink one of a kind bringing a unique look to your kitchen. The surface is durable and resistant to heat and stains. Can be under-glued. LILLVIKEN lid and water trap/strainer is included in the price.

Black/quartz composite 693.370.28



Under-glued available

Fits 60 cm cabinets



HAVSEN inset sink, 1 bowl, 53x47 cm. HAVSEN ceramic sink easy to clean, with soft rounded corners. Ceramic sinks are kiln-fired, which makes each one unique and the size may vary from the measurements given. Ceramic. LILLVIKEN lid and water trap/strainer is included in the price.

White 392.537.13



HAVSEN sink bowl with visible front, 62x48 cm. HAVSEN sink bowl with visible front is a fine detail in your traditional kitchen, and it also fits in a kitchen island. Easy to clean, with soft rounded corners. Ceramic. LILLVIKEN lid and water trap/strainer is included in the price.

White 192.537.14



KILSVIKEN inset sink, 1 bowl, 56x46 cm. The natural colour variations of the quartz make each KILSVIKEN sink one of a kind bringing a unique look to your kitchen. The surface is durable and resistant to heat and stains. Can be under-glued. LILLVIKEN lid and water trap/strainer is included in the price.

Black quartz composite 593.370.24



Under-glued available



KILSVIKEN inset sink, 1 bowl, 56x46 cm. The natural colour variations of the quartz make each KILSVIKEN sink one of a kind bringing a unique look to your kitchen. The surface is durable and resistant to heat and stains. Can be under-glued. LILLVIKEN lid and water trap/strainer is included in the price.

White/quartz composite 095.792.18



Under-glued available



KILSVIKEN inset sink, 1 bowl, 56x46 cm. The natural colour variations of the quartz make each KILSVIKEN sink one of a kind bringing a unique look to your kitchen. The surface is durable and resistant to heat and stains. Can be under-glued. LILLVIKEN lid and water trap/strainer is included in the price.

Grey/beige quartz composite 795.903.97



Under-glued available



KILSVIKEN inset sink, 1 bowl with drainboard, 72x46 cm. Reversible, so you can use it with the drainboard on the left or right. Can be under-glued. LILLVIKEN lid and water trap/strainer is included in the price.

Black/quartz composite 893.370.27



Under-glued available



KILSVIKEN inset sink, 1 bowl with drainboard, 72x46 cm. Reversible, so you can use it with the drainboard on the left or right. Can be under-glued. LILLVIKEN lid and water trap/strainer is included in the price.

White/quartz composite 595.903.98



Under-glued available



KILSVIKEN inset sink, 1 bowl with drainboard, 72x46 cm. Reversible, so you can use it with the drainboard on the left or right. Can be under-glued. LILLVIKEN lid and water trap/strainer is included in the price.

Grey-beige quartz composite 395.903.99



Under-glued available



TALLSJÖN sink bowl with visible front, 60x65 cm. This sink with apron front in dark grey quartz composite offers a rebellious farmhouse appeal. The deep one-bowl design makes it easier to clean bigger pots and pans without splashing water on the floor. Has a pre-drilled hole for a kitchen mixer tap. LILLVIKEN water trap/strainer is included in the price, but packaged separately.

Dark grey/stone effect 094.913.48

Fits 60 cm cabinets



FYNDIG inset sink, 1 bowl, 46×40 cm. Sink in stainless steel, a hygienic, strong and durable material that's easy to keep clean. Can be under-glued. LILLVIKEN lid and water trap/strainer is included in the price.
Stainless steel 591.580.03



VRESJÖN inset sink, 1 bowl, 54×44 cm. Sink in stainless steel, a hygienic, strong and durable material that's easy to keep clean. Can be under-glued. LILLVIKEN lid and water trap/strainer is included in the price.
Stainless steel 994.257.21

Under-glued available



HILLESJÖN inset sink 1 bowl, 56×46 cm. Sink in stainless steel, a hygienic, strong and durable material that's easy to keep clean. Can be under-glued. LILLVIKEN lid and water trap/strainer is included in the price.
Stainless steel 794.017.35

Under-glued available



HILLESJÖN inset sink, 1½ bowl, 58×46 cm. Sink in stainless steel, a hygienic, strong and durable material that's easy to keep clean. Can be under-glued. Reversible, so you can use it with the large bowl on the left or right. LILLVIKEN lid and water trap/strainer is included in the price.
Stainless steel 491.406.31

Under-glued available



LÅNGUDDEN inset sink, 1 bowl, 46×46 cm. Sink in stainless steel, a hygienic, strong and durable material that's easy to keep clean. Can be under-glued. Has a pre-drilled hole for a kitchen mixer tap. LILLVIKEN lid and water trap/strainer is included in the price.
Stainless steel 591.573.91

Under-glued available



LÅNGUDDEN inset sink, 1 bowl, 56×53 cm. Sink in stainless steel, a hygienic, strong and durable material that's easy to keep clean. Can be under-glued. Has a pre-drilled hole for a kitchen mixer tap. LILLVIKEN lid and water trap/strainer is included in the price.
Stainless steel 291.574.77

Under-glued available



BOHOLMEN inset sink, 1 bowl, 45×15 cm. Sink in stainless steel, a hygienic, strong and durable material that's easy to keep clean. Can be under-glued. LILLVIKEN lid and water trap/strainer is included in the price.
Stainless steel 791.574.94

Under-glued available



VATTUDALEN inset sink, 1 bowl with drainboard, 69×47 cm. Sink in stainless steel, a hygienic, strong and durable material that's easy to keep clean. Can be under-glued. Reversible, so you can use it with the drainboard on the left or right. LILLVIKEN lid and water trap/strainer is included in the price.
Stainless steel 691.581.68

Under-glued available



VATTUDALEN inset sink, 1 bowl with drainboard, 86×47 cm. Sink in stainless steel, a hygienic, strong and durable material that's easy to keep clean. Can be under-glued. Reversible, so you can use it with the drainboard on the left or right. LILLVIKEN lid and water trap/strainer is included in the price.
Stainless steel 291.581.89

Under-glued available



VATTUDALEN inset sink, 1½ bowl with drainboard, 88×53 cm. Sink in stainless steel, a hygienic, strong and durable material that's easy to keep clean. Can be under-glued. Reversible, so you can use it with the drainboard on the left or right. LILLVIKEN lid and water trap/strainer is included in the price.
Stainless steel 891.581.91

Under-glued available

Fits 80 cm cabinet



TALLSJÖN sink bowl with visible front, 80×65 cm. This sink with apron front in dark grey quartz composite offers a rebellious farmhouse appeal. The deep one-bowl design makes it easier to clean bigger pots and pans without splashing water on the floor. Has a pre-drilled hole for a kitchen mixer tap. LILLVIKEN lid and water trap/strainer is included in the price.

Dark grey/stone effect 994.913.63




HAVSEN sink bowl with visible front, 2 bowls, 82×48 cm. HAVSEN sink bowl with visible front is a fine detail in your traditional kitchen, and it also fits in a kitchen island. The visible front allows you to stand closer to the bowl without needing to lean forward when you wash dishes, which may feel more comfortable for your back. LILLVIKEN lid and water trap/strainer is included in the price.

White 792.502.65



KILSVIKEN inset sink, 1 bowl, 72×46 cm. The natural colour variations of the quartz make each KILSVIKEN sink one of a kind bringing a unique look to your kitchen. The surface is durable and resistant to heat and stains. Can be under-glued. LILLVIKEN lid and water trap/strainer is included in the price.

Black/quartz composite 293.370.25

 Under-glued available



KILSVIKEN inset sink, 1 bowl, 72×46 cm. The natural colour variations of the quartz make each KILSVIKEN sink one of a kind bringing a unique look to your kitchen. The surface is durable and resistant to heat and stains. Can be under-glued. LILLVIKEN lid and water trap/strainer is included in the price.

White/quartz composite 995.903.96

 Under-glued available



VATTUDALEN inset sink, 2 bowls with drainboard, 110×53 cm. Sink in stainless steel, a hygienic, strong and durable material that's easy to keep clean. Can be under-glued. Reversible, so you can use it with the drainboard on the left or right. LILLVIKEN lid and water trap/strainer is included in the price.

Stainless steel 091.581.90

 Under-glued available



VRESJÖN inset sink, 1 bowl, 73×44 cm. Sink in stainless steel, a hygienic, strong and durable material that's easy to keep clean. Can be under-glued. LILLVIKEN lid and water trap/strainer is included in the price.

Stainless steel 294.257.29

 Under-glued available

Water traps



LILLVIKEN water trap/strainer 1 bowl. Water trap with connection for dishwasher or washing machine. Polypropylene plastic.

103.115.39



LILLVIKEN water trap/strainer 2 bowls. Water trap with connection for both dishwasher and washing machine. Polypropylene plastic.

903.115.40



LILLVIKEN extra connection for water-trap. Allows you to connect an extra appliance to LILLVIKEN water-trap. Polypropylene plastic.

403.883.15

Sink accessories

Our sink accessories support all activities in and around the sink, helping you when preparing food and wash-

ing up. Plus, they help you to save both water and space, too.



LILLVIKEN lid. Attaches via a magnet to all sink bowls with LILLVIKEN water-trap and can be used as a handle for lifting the basket. The lid creates a flat surface at the bottom of the sink and prevents food waste from getting into the basket, making the sink easy to keep clean.

203.178.52



NORRSJÖN chopping board, L44×W42 cm. You can place the chopping board over the sink to get more space on the worktop and to hide dirty dishes. Fits over the bowl of VRESJÖN sinks, 54×44 cm or 73×44 cm. Solid oak.

403.397.11



NORRSJÖN colander, L42×W19×H9 cm. The colander is designed to rest steadily on the edges of the bowl. You can use it as a colander to rinse vegetables and salad or drain pasta. Fits on the bowl of all VRESJÖN sinks, 37×44 cm or bigger.

003.397.13



LILLHAVET chopping board, light grey. 1-p. L49×W35 cm. You get an additional work surface when you fit the chopping board over one of our kitchen sinks with inner dimension 400 mm.

505.034.33



SKOLÄST sink container extendable, green. Big enough to hold everything from washing-up liquid to brushes and sponges, giving you more space to work on the kitchen counter. Fits most sink bowls since the length can be adjusted from 39 to 54 cm, including the handles. On the edge there is an extendable arm where you can hang a dishcloth to dry. Water from dish brushes and sponges drains quickly through the holes in the bottom. Hangs firmly in place over the sink bowl thanks to the anti-slip surface under the handles.

605.566.85



RINNIG sink container, black. This practical container helps you keep things organised in or near the sink. Here you can have a dish sponge, brush or anything else you use often and want close at hand. With suction cups that grip smooth surfaces such as glass, mirrors and tiles.

805.954.45

Under-glued sinks

Under-glued sinks give you an uninterrupted, smooth look. They make cleaning your worktop easy, as there are no obstructions for food scraps to catch on. You can order an under-glued sink when you order a custom-made worktop.

The custom-made worktop is delivered prepared for easy under-glue fitting. If you are unsure how to fit an under-glued sink, contact a professional installation service.

Under-glued in solid surface worktop



Under-glued in laminate worktop



Under-glued in thick veneer worktop



Products used

VRESJÖN inset sink, 1 bowl,
54×44 cm, stainless steel.

Kitchen taps

Water-efficiency at every step

Earth may be covered in a lot of water, but very little of it is drinkable and even less is accessible. No organism can survive without it, and no new water is created. It's constantly recycled, but our freshwater supply is overused; not evenly distributed; and impacted by pollution, contamination and climate change. All kitchen taps come with a

built-in pressure compensating aerator for improved water-efficiency. Different functions like pull-out and pull-down spray enable a more conscious use of water and support water conservation over time.

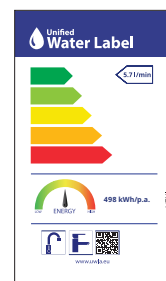
10

All our kitchen mixer taps are tested and third party certified to meet, or exceed, the demands of the relevant national and international mechanical, quality, safety and hygienic standards. All IKEA kitchen mixer taps come with a free 10-year guarantee. Find out more on page 138.

Did you know that heating hot water accounts for a large proportion of home energy use? Using water more efficiently can reduce your energy bills and ultimately help reduce carbon emissions.

Look for the Unified Water Label and start making a difference. The label has a clear colour coded system to show how much energy and water the product uses. Green rated products use less than those rated red.

Visit www.uwla.eu to find out more.





Functions



Kitchen mixer taps with pull-out spout

Rinsing dishes is easier with the pull-out spout. A counterweight makes the hose easily retract back into the kitchen mixer tap.

SALLSJÖN kitchen mixer tap pull out*



Kitchen mixer taps with pull-out spout with spray

This kitchen tap has a shower-spray pull-out spout with a pivoting ball joint – perfect for reaching every corner of the sink.

MAJSJÖN kitchen mixer tap pull out with spray*



Kitchen mixer taps with pull-down spout with spray

This kitchen tap has a high-arc gooseneck spring with pull-down spout, offers full sink coverage for easy prep and clean-up.

TAKSJÖN kitchen mixer tap pull down with spray*



Kitchen mixer taps with low spout

Kitchen mixer taps with low spouts always have the handle on top, and are ideal for small single bowl sinks.

LAGAN kitchen mixer tap*

Kitchen mixer taps



8.0 l/min

ÄLMAREN kitchen mixer tap H36 cm. Swivel spout is preset to 360° but can be changed to 120°. Also available with pull-out spout.

Stainless steel colour	604.551.63
Black	206.082.81



8.0 l/min

GLITTRAN kitchen mixer tap H28 cm. Swivel spout: 360°.

Chrome-plated	702.226.20
Brass-colour	204.686.81



8.0 l/min

EDSVIK dual-control kitchen mixer tap H30 cm. Swivel spout: 360°.

Chrome-plated	800.318.42
---------------	------------



7.5 l/min

New

SALLSJÖN kitchen mixer tap H27 cm. Swivel spout 120°.

Stainless steel colour	206.106.32
------------------------	------------



7.5 l/min

New

SALLSJÖN kitchen mixer tap H36 cm. Swivel spout 120°. Also available with pull-out spout.

Stainless steel colour	006.106.52
------------------------	------------



7.5 l/min

New

TAKSJÖN kitchen mixer tap H30 cm. Swivel spout 120°.

Stainless steel colour	706.105.02
Black	106.106.42

Kitchen mixer taps with top lever



7.0 l/min

New

MAJSJÖN kitchen mixer tap H25 cm. Swivel spout 120°. Also available with pull-out spout.

Stainless steel colour	806.104.84
------------------------	------------



7.0 l/min

New

TAKSJÖN kitchen mixer tap H28 cm. Swivel spout 120°.

Stainless steel colour	006.105.05
------------------------	------------

Kitchen mixer taps with pull-out spout



ÄLMAREN kitchen mixer tap with pull-out spout
H36 cm. Swivel spout 120°. Also available without pull-out spout.

Stainless steel colour	204.280.58
Black	406.082.80



New **SALLSJÖN kitchen mx tap pull out** H37 cm. Swivel spout: 120°.

Stainless steel colour	606.106.25
Black	406.138.99

Kitchen mixer taps with pull-out spout with spray



New **MAJSJÖN kitchen mx tap pull out-spray** H33.4 cm. Swivel spout 120°.

Stainless steel colour	506.138.94
Black	606.238.78

Kitchen mixer taps with pull-down spout with spray



New **SALLSJÖN kitchen mixer tap with pull down-spray.** H48 cm. Swivel spout is preset to 360° but can be changed to 120°.

Stainless steel colour	106.106.37
Black	606.138.98



New **TAKSJÖN kitchen mixer tap with pull down-spray.** H47 cm. Swivel spout is preset to 360° but can be changed to 120°.

Stainless steel colour	606.104.99
------------------------	------------



New **MAJSJÖN kitchen mixer tap with pull down-spray.** H56 cm. Swivel spout is preset to 360° but can be changed to 120°.

Stainless steel colour	106.106.18
------------------------	------------

Kitchen mixer taps with low spout



LAGAN kitchen mixer tap H16 cm.
Swivel spout: 360°.

Chrome-plated 900.850.28



SALLSJÖN spray function.



MAJSJÖN pull-out spray function.

Kitchen organisers

A kitchen easy to live in

Your kitchen isn't fully in function until everything in it has found a place of its own. With smart organisers and acces-

sories, you'll find what you need, when you need it.

Your best kitchen friends

Trays, boxes and waste organisers help you to make the most of the space inside your kitchen cabinets.

The sink area is a busy place. We have accessories with multiple purposes that can help you utilise the area in and around the sink, supporting the work-

flow both when preparing food and washing up.

Utilise the full area in the kitchen, even the walls. With smart wall storage often used items can be close at hand, at the same time you free up workspace.



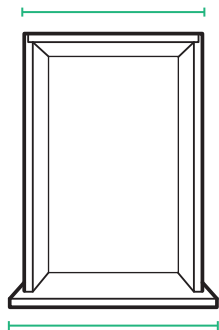
Create the perfect combination for your drawers

Less time searching, more time for cooking. Clever inside trays for your drawers keep cutlery and kitchen utensils organised and in place. To really make sure you

can see everything in the drawer, complete with kitchen lighting. See all kitchen lighting on **page 66**.

40 cm drawer

Inner dimensions 32 cm



Outer dimensions 40 cm



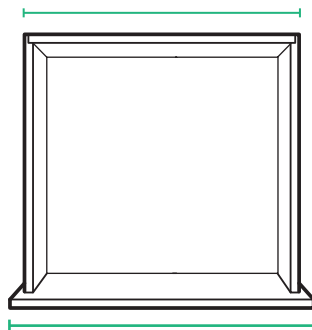
06 1× UPPDATERA cutlery tray, 32×50 cm



08 1× UPPDATERA cutlery tray, 32×50 cm

60 cm drawer

Inner dimensions 52 cm



Outer dimensions 60 cm



06 1× UPPDATERA cutlery tray, 32×50 cm
02 1× UPPDATERA utensil tray, 20×50 cm



06 1× UPPDATERA cutlery tray, 32×50 cm
02 1× UPPDATERA utensil tray, 20×50 cm



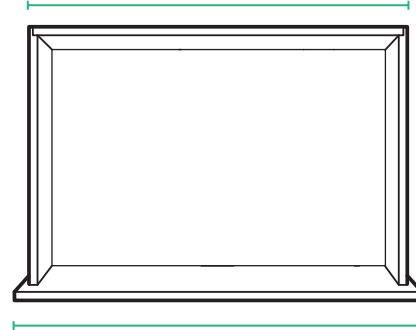
09 1× UPPDATERA cutlery tray, 52×50 cm



08 1× UPPDATERA cutlery tray, 32×50 cm
04 1× UPPDATERA utensil tray, 20×50 cm
11 1× UPPDATERA knife rack

80 cm drawer

Inner dimensions 72 cm



Outer dimensions 80 cm



06 1× UPPDATERA cutlery tray, 32×50 cm
02 2× UPPDATERA utensil tray, 20×50 cm



06 1× UPPDATERA cutlery tray, 32×50 cm
02 2× UPPDATERA utensil tray, 20×50 cm
11 1× UPPDATERA knife rack



09 1× UPPDATERA cutlery tray, 52×50 cm
04 1× UPPDATERA utensil tray, 20×50 cm



09 1× UPPDATERA cutlery tray, 52×50 cm
04 1× UPPDATERA utensil tray, 20×50 cm
11 1× UPPDATERA knife rack

UPPDATERA interior fittings

Choose interior fittings that suit your size of drawer and your cutlery and utensils. A helpful tip is to keep

things close to where they are used as this enables a smooth workflow.

Utensil trays

01



UPPDATERA utensil tray, 20x31 cm.
White 104.600.15

02



UPPDATERA utensil tray, 20x50 cm.
White 504.600.18

03



UPPDATERA utensil tray, 10x50 cm.
Light bamboo 006.180.97

04



UPPDATERA utensil tray, 20x50 cm.
Light bamboo 006.181.01

05



UPPDATERA utensil tray, 20x31 cm, bamboo.
606.180.99

Cutlery trays

06



UPPDATERA cutlery tray, 32x50 cm.
White 104.600.20

07



UPPDATERA cutlery tray, 32x31 cm.
White 704.600.17

08



UPPDATERA cutlery tray, 32x50 cm.
Light bamboo 404.599.73

09



UPPDATERA cutlery tray, 52x50 cm.
Light bamboo 704.331.04

10



UPPDATERA cutlery tray, 32x31 cm, bamboo.
305.881.12

Spice and knife rack inserts

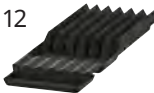
11



New

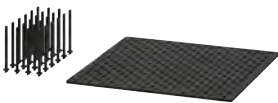
UPPDATERA spice rack, 10x50 cm.
White 506.005.75

12



UPPDATERA knife rack.
Anthracite 804.332.07

Other organisers



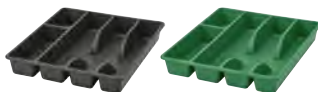
UPPDATERA pegboard drawer organiser.
Anthracite.
60 cm 604.600.08
80 cm 004.600.11



UPPDATERA adjustable organiser for drawer.
40 cm 505.441.79
60 cm 505.441.84



UPPDATERA sliding organiser for drawer.
60 cm 005.441.86



SMÄCKER cutlery tray, 31x26 cm.
Anthracite 106.014.59
Bright green 806.014.65



New

VARIERA cutlery tray, 30-52x47 cm.
White 106.138.10



New

VARIERA utensil tray, 20x47 cm.
White 906.138.11

Waste sorting combinations

Are you curious about how your waste can become new resources? HÅLLBAR series helps you sort different materials into different bins – a simple action and the first step towards giving waste a new life. HÅLLBAR

waste sorting management serie is a waste management solution for any room of your home and can be built-in and freestanding, whichever you prefer.



The bin's ventilation holes and the form of the bottom allow the air to circulate and dry out the organic waste. This minimises unwanted odours.



A ring on the top edge of the bin hides the waste bag and keeps it in place. It's removable either for easy cleaning or if not being used



The folding handle makes it easy to carry the bin with you to the waste station.



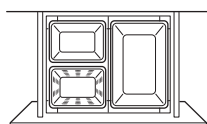
The included sticker can be attached to the bin to mark what you are sorting. Draw or write on the sticker to make it clear what goes in the bin.

MAXIMERA high drawer, 60 cm wide, 45 cm deep

HÅLLBAR bin with lids are designed to meet different waste sorting needs. This narrow combination is suitable if you have limited space and choose to sort your waste at the recycling station.



HÅLLBAR waste sorting solution 42L for METOD kitchen drawer, ventilated/light grey. A combination with 1 bin for sorting your cans and smaller packages, 1 for cartons, plastic, bottles, jars and advertising mail, and 1 for dry and wet organic waste.
293.088.29

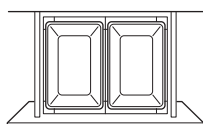


Parts included in this solution

HÅLLBAR bin with lid, 10L, light grey	803.980.58	1 pc
HÅLLBAR bin with lid, 22L, light grey	204.202.03	1 pc
HÅLLBAR bin with lid for organic waste, 10L, light grey	804.338.82	1 pc
HÅLLBAR support frame for waste sorting bins, 60 cm, white	804.228.69	1 pc



HÅLLBAR waste sorting solution 44 l for METOD kitchen drawer/light grey. A combination with 2 bins for sorting your cartons, plastic, paper, bottles, glass, jars, envelopes and advertising mail.
193.088.39

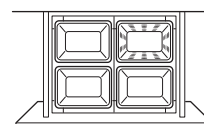


Parts included in this solution

HÅLLBAR bin with lid, 22L, light grey	204.202.03	2 pcs
HÅLLBAR support frame for waste sorting bins, 60 cm, white	804.228.69	1 pc



HÅLLBAR waste sorting solution 40L for METOD kitchen drawer, ventilated/light grey. A combination with 3 bins for sorting your cans and smaller packages such as hygiene products, and 1 for sorting dry and wet organic waste.
393.089.23



Parts included in this solution

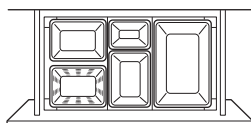
HÅLLBAR bin with lid, 10L, light grey	803.980.58	3 pcs
HÅLLBAR bin with lid for organic waste, 10L, light grey	804.338.82	1 pc
HÅLLBAR support frame for waste sorting bins, 60 cm, white	804.228.69	1 pc

MAXIMERA high drawer 80 cm wide, 45 cm deep

HÅLLBAR bin with lids are designed to meet different waste sorting needs. This combination is suitable if you want to make it easy to sort your waste at home.



HÅLLBAR waste sorting solution 55L for METOD kitchen drawer ventilated/light grey. A combination with 4 bins for sorting everything from cartons, bottles and cans to smaller packages, lightbulbs and batteries, and 1 for sorting dry and wet organic waste.
693.089.26

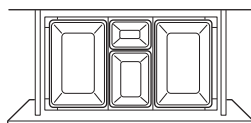


Parts included in this solution

HÅLLBAR bin with lid with lid, 10L, light grey	803.980.58	2 pcs
HÅLLBAR bin with lid, 22L, light grey	204.202.03	1 pc
HÅLLBAR bin with lid, 3L, light grey	904.321.94	1 pc
HÅLLBAR bin with lid for organic waste, 10L, light grey	804.338.82	1 pc
HÅLLBAR support frame for waste sorting bins, 80 cm, white	604.228.70	1 pc



HÅLLBAR waste sorting solution 57L for METOD kitchen drawer/light grey. A combination with 4 bins for sorting everything from cartons, bottles, cans and smaller packages to lightbulbs and batteries.
993.096.94

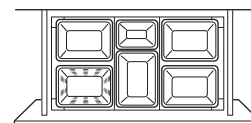


Parts included in this solution

HÅLLBAR bin with lid, 10L, light grey	803.980.58	1 pc
HÅLLBAR bin with lid 22L, light grey	204.202.03	2 pcs
HÅLLBAR bin with lid 3L, light grey	904.321.94	1 pc
HÅLLBAR support frame for waste sorting bins, 80 cm, white	604.228.70	1 pc



HÅLLBAR waste sorting solution 53L for METOD kitchen drawer ventilated/light grey. A combination with 5 bins for sorting everything from cans and smaller packages to lightbulbs and batteries, and 1 for sorting dry and wet organic waste.
093.096.98



Parts included in this solution

HÅLLBAR bin with lid 10L, light grey	803.980.58	4 pcs
HÅLLBAR bin with lid 3L, light grey	904.321.94	1 pc
HÅLLBAR bin with lid for organic waste, 10L, light grey	804.338.82	1 pc
HÅLLBAR support frame for waste sorting bins, 80 cm, white	604.228.70	1 pc

Waste sorting combinations

HÅLLBAR pull-out solutions

HÅLLBAR bin with lids are designed to meet different waste sorting needs. This narrow combination is suitable if you have limited space and choose to sort your waste at the recycling station.



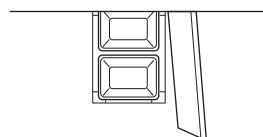
HÅLLBAR waste sorting solution 20L with pull-out/light grey. A combination with 2 bins that is perfect for sorting your tin cans and smaller packages. 793.088.03



HÅLLBAR waste sorting solution 20L with pull-out ventilated/light grey. A combination with 1 bin for sorting your tin cans and smaller packages and 1 for dry and wet organic waste. 993.088.16

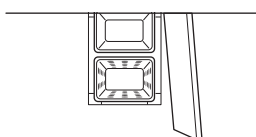


HÅLLBAR waste sorting solution 22L with pull-out/light grey. HÅLLBAR bin with lids are designed to meet different waste sorting needs. This bin is perfect for sorting things like cardboard, plastic, paper, bottles, glass, tin cans, envelopes and advertising mail. 093.088.25



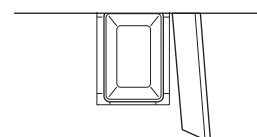
Parts included in this solution

HÅLLBAR bin with lid, 10L, light grey	803.980.58	2 pcs
HÅLLBAR pull-out frame for waste sorting, light grey	204.228.53	1 pc



Parts included in this solution

HÅLLBAR bin with lid for organic waste 10L, light grey	804.338.82	1 pc
HÅLLBAR bin with lid 10L, light grey	803.980.58	1 pc
HÅLLBAR pull-out frame waste sorting light grey	204.228.53	1 pc



Parts included in this solution

HÅLLBAR bin with lid 22L, light grey	204.202.03	1 pc
HÅLLBAR pull-out frame waste sorting, light grey	204.228.53	1 pc



HÅLLBAR bin with lids are stackable to save space. Place same-size bins on top of each other or place smaller bins on top of the larger ones.



Mount this pull-out frame inside your cabinet to hide your waste sorting behind a door. Easy to mount and use in cabinets throughout the home. Pull-out to sort and push it back when you are done.

Freestanding waste sorting solutions

Just like people, kitchens come in many shapes and forms. They all have their unique layouts, designs, colours, and accessories. The way people store and sort waste also differs from market to market. That is

why we believe in solutions that can be adapted to your unique waste sorting needs.



DAMMÄNG bin with lid
The stackable DAMMÄNG bins help you save space and allow waste sorting to be part of the home interior.



FARMARKVAST bin for organic waste
Keep this bin on the kitchen worktop while cooking and cleaning up to collect organic waste and food scraps.



GÄRDSBUTIK wall-mounted bin
With GÄRDSBUTIK bin you can create a wall-mounted solution for waste sorting wherever you like in your home. Mount one – or combine several.



TRÖSKNING bin with lid
With TRÖSKNING bins, you can save space and allow waste sorting to become part of the decor, freestanding or stacked. Designed for dry waste but can also be used for storage.

Freestanding waste sorting solutions

HÅLLBAR Freestanding waste sorting solutions

The bins can be placed freestanding anywhere in your home or integrated in a cabinet or drawer.

HÅLLBAR bin with lids are stackable to save space. Place same-size bins on top of each other or place smaller bins on top of the larger ones.

A lid is included to hide your waste. It's removable for easy cleaning or if you prefer to keep your bin open.

The included sticker can be attached to the bin to mark what you are sorting. Draw or write on the sticker to make it clear what goes in the bin. The bin is designed with rounded corners to make it easier to clean. The folding handle makes it easy to carry the bin with you to the waste station. A ring on the top edge of the bin hides the waste bag and keeps it in place. It's removable either for easy cleaning or if not being used.



HÅLLBAR bin with lid, 3L, light grey. This bin is perfect for sorting used batteries and light bulbs, or to store smaller items like sponges, cloths, tea lights and crayons.

904.321.94



HÅLLBAR bin with lid, 10L, light grey. This bin is perfect for sorting tin cans, small packages such as hygiene products or to store paper rolls or shopping bags.

803.980.58



HÅLLBAR bin with lid for organic waste, 10L, light grey. This bin is perfect for sorting dry and wet organic waste such as coffee grounds and peels from fruits or vegetables. The bin's ventilation holes and the form of the bottom allow the air to circulate and dry out the organic waste. This minimises unwanted odours.

804.338.82



HÅLLBAR bin with lid, 22L, light grey. This bin is perfect for sorting things like cardboard, plastic, paper, bottles, glass, tin cans, envelopes and advertising mail.

204.202.03



HÅLLBAR bin with lid, 35L, light grey. This bin is perfect for sorting things like cartons, bottles and newspapers or to give bulkier items their own space.

504.202.06



HÅLLBAR pull-out frame for waste sorting, light grey. Mount this pull-out frame inside your cabinet to hide your waste sorting behind a door. Easy to mount and use in cabinets throughout the home. The pull-out frame gives you quick access and a good overview of your waste sorting and keeps your bin stable. Pull it out to sort and push it back when you are done.

204.228.53



HÅLLBAR support frame for waste sorting bins, W60 cm, white. By mounting HÅLLBAR support frame for waste sorting bins in MAXIMERA high drawer you can hide your waste sorting.

The support frame provides quick access and a good overview of your waste sorting and keeps your bins stable. Pull it out to sort and push it in when you are done.

Mount in MAXIMERA high drawer 60×60 cm or in MAXIMERA high drawer 60×45 cm to allow space for pipes behind the drawer. Dimensioned for HÅLLBAR bin with lids, excluding 3 l and 35L bins.

804.228.69



HÅLLBAR support frame for waste sorting bins, W80 cm, white. By mounting HÅLLBAR support frame for waste sorting bins in MAXIMERA high drawer you can hide your waste sorting.

The support frame provides quick access and a good overview of your waste sorting and keeps your bins stable. Pull it out to sort and push it in when you are done.

Mount in MAXIMERA high drawer 80×60 cm or in MAXIMERA high drawer 80×45 cm to allow space for pipes the drawer. Dimensioned for HÅLLBAR bin with lids, excluding the 35L bin.

604.228.70

Other freestanding waste sorting products

**New****SORTERA sorting bin with lid, beige.**

37L	506.020.94
60L	006.020.96

**New****SORTERA insert with compartments, beige.**

38×45×14 cm	906.070.99
-------------	------------

**KNÖCKLA pedal bin, dark grey.**

25L	905.140.95
50L	705.141.00

**KNODD bin/lid, grey.**

16L	603.122.49
40L	903.153.12

**DAMMÄNG bin with lid.**

8L, dark grey	005.599.84
26L, grey-beige	605.599.76
48L, grey-green	005.599.79

**FARMARKVAST bin with lid for organic waste, grey-green. Keep the bin next to you on the kitchen worktop when you're cooking. No bag is needed.**

4L	905.670.03
----	------------

**GÄRDSBUTIK bin with lid, grey-beige.**

21L	705.651.99
-----	------------

**TRÖSKNING bin with lid.**

25L, light grey-blue	005.922.57
25L, beige	805.922.58

**New****GÄNGSKYFFEL pedal bin, grey-green.**

9L	805.953.89
18L	005.953.88

**New****TURRIDNING pedal bin, white/anthracite.**

9L	705.954.03
----	------------

**New****STENTRAPPA pedal bin.**

9L, anthracite	105.953.97
9L, light grey-beige	605.953.85
18L, anthracite	705.953.99
18L, light grey-beige	205.953.87

Knobs and handles

Small details that makes a difference!

Knobs and handles are like icing on the cake. Enhance the style you like, refresh the look of doors and drawers, co-ordinate with the rest of your home – or simply change because it's fun.

Knobs and handles may seem small but they can help you to really personalise your kitchen. You can enhance a style to make your kitchen look more traditional or more modern. Mix them or match them perfectly and play with placements to create the finishing touches to the look you want in your dream kitchen.

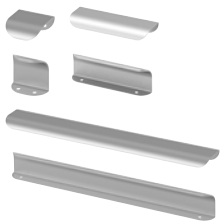


FIXA drill template

This simple tool helps you easily and accurately mark where you want to place your knobs and handles. Available online and at your local IKEA store.



Knobs and handles



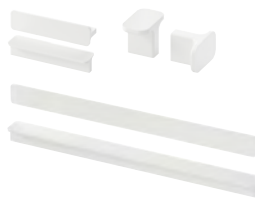
BILLSBRO handle, stainless steel colour.

L40 mm	603.235.92	2-pack
L120 mm	703.236.00	2-pack
L320 mm	503.235.97	2-pack
L520 mm	403.235.93	2-pack
L720 mm	703.235.96	2-pack



BILLSBRO handle, white.

L40 mm	203.343.14	2-pack
L120 mm	503.343.03	2-pack
L320 mm	603.343.12	2-pack
L520 mm	503.343.17	2-pack
L720 mm	103.343.19	2-pack

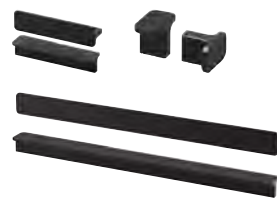


HACKÅS handle, white.

L100 mm	304.086.82	2-pack
L300 mm	104.086.83	2-pack

HACKÅS knob, white.

Ø15 mm	604.086.85	2-pack
--------	------------	--------



HACKÅS handle, anthracite.

L100 mm	303.424.79	2-pack
L300 mm	503.424.78	2-pack

HACKÅS knob, anthracite.

Ø15 mm	803.397.90	2-pack
--------	------------	--------



BAGGANÅS handle, black.

L143 mm	803.384.13	2-pack
L335 mm	603.384.14	2-pack



BAGGANÅS handle, brass-colour.

L143 mm	003.384.07	2-pack
L335 mm	203.384.11	2-pack



BAGGANÅS handle, stainless steel.

L143 mm	703.384.18	2-pack
L335 mm	503.384.19	2-pack



STJÄRNHOV handle, chrome-plated.

L126 mm	606.096.22	2-pack
---------	------------	--------



BAGGANÅS knob, black.

Ø20 mm	103.384.16	2-pack
Ø21 mm	903.384.17	2-pack



BAGGANÅS knob, brass-colour.

Ø20 mm	803.384.08	2-pack
Ø21 mm	003.384.12	2-pack



BAGGANÅS knob, stainless steel.

Ø20 mm	103.384.21	2-pack
Ø21 mm	903.384.22	2-pack



STJÄRNHOV knob, chrome-plated.

34 mm	906.096.25	2-pack
-------	------------	--------



KALERUM handle, stainless steel colour.

138 mm	605.536.44	2-pack
266 mm	305.536.50	2-pack
394 mm	405.536.59	2-pack



KALERUM knob, stainless steel colour.

30 mm	405.428.59	2-pack
-------	------------	--------



KALERUM handle, brass-colour.

L138 mm	405.965.50	2-pack
---------	------------	--------

KALERUM knob, brass-colour.

Ø30 mm	605.965.54	2-pack
--------	------------	--------

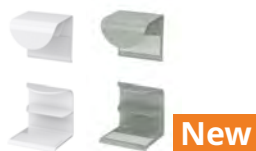


GUBBARP handle, white.

L116 mm	003.364.32	2-pack
---------	------------	--------

GUBBARP knob, white.

Ø21 mm	803.364.33	2-pack
--------	------------	--------



DRAGSMARK clip-on handle, 40mm.

White	005.598.04	2-pack
Grey-Green	806.060.19	2-pack



KALLRÖR handle, stainless steel.

L213 mm	503.570.02	2-pack
L405 mm	103.570.04	2-pack
L597 mm	303.570.03	2-pack

**NYDALA handle, black.**

L154 mm	306.255.86	2-pack
L346 mm	106.255.87	2-pack

**NYDALA handle, bronze-colour.**

L154 mm	806.414.85	2-pack
L346 mm	306.414.83	2-pack

**ÖSTERNÄS handle, tanned leather.**

L153 mm	403.488.95	2-pack
L65 mm	203.488.96	2-pack

**VINNÄSET knob, Ø37 mm.**

Wood	504.342.94	2-pack
Brown	305.889.37	2-pack

**NYDALA knob, black.**

Ø16 mm	906.255.88	2-pack
--------	------------	--------

**NYDALA knob, bronze-colour.**

Ø16 mm	106.414.84	2-pack
--------	------------	--------

**SKRUVSHULT handle.**
Anthracite.

152 mm	505.059.55	2-pack
--------	------------	--------

**SKRUVSHULT knob.**
Anthracite.

18 mm	805.074.82	2-pack
26 mm	705.074.87	2-pack

**BORGHAMN handle, steel.**

L40 mm	003.160.47	2-pack
L170 mm	203.160.46	2-pack
L426 mm	403.189.78	2-pack

**KLINGSTORP handle, black/chrome-plated.**

141 mm	405.652.85	2-pack
--------	------------	--------

KLINGSTORP knob, black/chrome-plated.

23 mm	305.652.81	2-pack
30 mm	905.652.83	2-pack

**KLINGSTORP handle, off-white/chrome-plated.**

141 mm	905.536.85	2-pack
--------	------------	--------

KLINGSTORP knob, off-white/chrome-plated.

23 mm	605.428.58	2-pack
30 mm	605.536.82	2-pack

**MOSSARYD drop handle.**
Stainless steel colour

L49 mm	703.703.52	2-pack
--------	------------	--------

**TÄRNESTAD knob.**
Oak

Ø17 mm	205.428.60	2-pack
--------	------------	--------

**HAMPHULT handle.**
Oak

146 mm	406.142.43	2-pack
--------	------------	--------

HAMPHULT knob.
Oak

Ø22 mm	006.142.40	2-pack
--------	------------	--------

**ENERYDA knob, black.**

Ø20 mm	303.475.04	2-pack
Ø27 mm	803.475.06	2-pack
Ø35 mm	003.475.05	2-pack

**ENERYDA knob, brass-colour.**

Ø20 mm	906.108.60	2-pack
Ø27 mm	506.108.62	2-pack
Ø35 mm	806.108.65	2-pack

**ENERYDA knob, chrome-plated.**

Ø20 mm	503.475.03	2-pack
Ø27 mm	003.475.10	2-pack
Ø35 mm	803.475.11	2-pack

**ENERYDA cup handle, black.**

L89 mm	503.475.17	2-pack
--------	------------	--------

**ENERYDA cup handle, brass-colour.**

L89 mm	706.108.37	2-pack
--------	------------	--------

**ENERYDA cup handle, chrome-plated.**

L89 mm	403.475.13	2-pack
--------	------------	--------

**ENERYDA handle, black.**

L112 mm	703.475.16	2-pack
---------	------------	--------

**ENERYDA handle, brass-colour.**

L112 mm	306.108.58	2-pack
---------	------------	--------

**ENERYDA handle, chrome-plated.**

L112 mm	603.475.12	2-pack
---------	------------	--------

Kitchen accessories

Whether you have a new, beautifully-planned kitchen or just looking to make improvements in your current one - there are a few secret ingredients that will make life simpler and more enjoyable. For instance, smart organisers create natural spots for storing cooking utensils and gadgets, so the whole family knows where to find them - and where to put them back. Trays, boxes and waste organisers work double

shift by preventing clutter and making the best use of space inside your cabinets and drawers. Wall storage does its magic by putting all those things you use the most, close at hand - right where you need them. And for the busiest place in the kitchen - don't forget the clever accessories around the sink that come in handy when preparing food and washing up.



Kitchen islands, sideboards, trolleys and step stools

All of these are easy additions to any kitchen design. A kitchen island serves as an extended worktop space and often becomes a favourite spot for snacking, working and socialising. Sideboards add that little extra storage we all need and a trolley on wheels offers roll-anywhere convenience. A step-stool is a must-have for any kitchen, for reaching things up high, letting kids join the fun at the worktop, or using as extra seating by the table.



Having things in plain sight has its advantages

With open shelves, hooks, rails and racks you can create a personal combination that gives a good overview of your kitchen and makes everything easily accessible. Inspired by restaurant kitchens, we created KUNGSFORS series of wall-mounted shelves and accessories so you can feel like a professional and enjoy a smooth workflow.



Wall storage



KUNGSFORS suspension rail*, L80 cm.
Stainless steel 803.348.58



KUNGSFORS wall grid*, W56×H26.5 cm.
Stainless steel 803.349.19



KUNGSFORS dish drainer*, W60×D30×H10 cm.
Powder coated steel/
stainless steel 403.712.25



KUNGSFORS suspension rail with shelf/wall grid*,
W184×D32×H160 cm.
Stainless steel/
ash veneer 292.543.41



**KUNGSFORS suspension rail/shelf/dish drainer/
rail/wall grid***, W184×D32×H80 cm.
Ash veneer/stainless steel/powder
coated steel 892.543.38



**KUNGSFORS suspension rail with shelf/rail/wall
grid/ash veneer shelf***, W184×D32×H80 cm.
Stainless steel/
ash veneer 592.848.79



**KUNGSFORS suspension rail/shelf/dish drainer/
wall grid***, W124×D32×H102 cm.
Ash veneer/stainless steel/powder
coated steel 492.543.35



**KUNGSFORS suspension rail with shelf/mag-
net knife rack/wall grid/ash veneer shelf***,
W124×D32×H120 cm.
Stainless steel/
ash veneer 392.848.80



**KUNGSFORS suspension rail with shelf/rack/dish
drainer***, W64×D32×H80 cm.
Ash veneer/stainless steel/ powder
coated steel 092.543.23



**KUNGSFORS suspension rail with shelf/magnet
knife rack***, W64×D32×H80 cm.
Ash veneer/
stainless steel 392.543.26



KUNGSFORS suspension rail with shelf/wall grid*,
W64×D32×H80 cm.
Stainless steel 192.543.32



SKÅDIS pegboard, 76×56 cm.
White 103.216.18
Black 505.343.78



SKÅDIS pegboard, 56×56 cm.
White 003.208.03
Black 105.343.75



SKÅDIS pegboard, 36×56 cm.
White 503.208.05
Black 805.343.72



BOTKYRKA wall shelf, 80×20 cm.
White 402.797.31



TORNVIKEN wall shelf, 60×100 cm.
Off-white 203.980.99



TORNVIKEN wall shelf, 50 cm.
Off-white 803.935.17



TORNVIKEN wall shelf, 120 cm.
Off-white 603.916.61



KLAVRESTRÖM wall shelf, 60×20 cm
Oak 306.016.89

Kitchen islands and sideboards

Boost your storage space and kitchen functionality while adding a social focal point in your kitchen at the

same time. A kitchen island or sideboard is great for many things.



TORNVIKEN kitchen island, 126×77×90 cm.
Off-white/oak 403.916.57



VADHOLMA kitchen island, 79×63×90 cm.
Black/oak 403.661.15



VADHOLMA kitchen island, 126×79×90 cm.
Black/oak 203.591.54



VADHOLMA kitchen island with rack, 126×79×225 cm.
Black/oak 592.762.28



RIMFORSA work bench, 120×63.5×92 cm.
Stainless steel/bamboo 903.992.84

Rails and accessories

Our selection of kitchen helpers gives you more work and storage space without the expense of a remodel.



KUNGSFORS rail*, stainless steel.
W56 cm 403.349.16



KUNGSFORS s-hook*, H6 cm, stainless steel, 5-p.
203.349.22



KUNGSFORS magnet knife rack*, W56 cm, stainless steel.
403.349.21



KUNGSFORS magnetic clip*, H8 cm, stainless steel, 3-p.
003.349.23



KUNGSFORS net bag, natural, set of 2.
203.728.34



VIVALLA tablet stand, 26x17 cm, bamboo veneer.
104.014.84



HULTARP rail, 60 cm.
Black 004.487.69
Polished/brass-colour 504.487.76



HULTARP rail, 80 cm.
Black 204.487.73
Nickel-plated 904.444.32
Polished/brass-colour 304.487.77



HULTARP dish drainer.
Black 604.487.66



HULTARP container, 14x16 cm.
Black 304.444.54
White/polished brass-colour 104.628.30
Blue/nickel-plated 805.887.13



HULTARP container, black/mesh.
14x16 cm 704.628.27
31x16 cm 204.488.34



HULTARP hook, 11 cm, 2-p.
Polished/brass-colour 904.488.40



HULTARP hook, 7 cm, 5-p.
Black 104.444.45
Nickel-plated 504.488.37
Polished/brass-colour 104.487.78

**HULTARP kitchen roll holder.**

Black	604.444.38
-------	------------

**HULTARP magnet knife rack, 38 cm.**

Black	804.444.42
-------	------------

**NEREBY rail, birch.**

40 cm	004.673.00
60 cm	904.763.43

**NEREBY s-hook, 5-p.**

White	204.763.51
-------	------------

**NEREBY container.**

Natural	904.290.97
---------	------------

**NEREBY wall shelf 40x10 cm.**

Birch	904.659.24
-------	------------

**BEKVÅM spice rack, aspen.**

Aspen	204.871.75
-------	------------

**ÖBONÅS container with suction cup.** No drilling required thanks to the suction cup with strong grip.

Grey-beige	906.060.90
------------	------------

**ÖBONÅS triple hook with suction cup, 7x11 cm.** No drilling required thanks to the suction cup with strong grip.

Grey-beige	806.060.95
------------	------------

**ÖBONÅS wall shelf with suction cup, 28 cm.** No drilling required thanks to the suction cup with strong grip.

Grey-beige	406.061.01
------------	------------

**PÅLYCKE clip-on basket, 22x26x19 cm.** Perfect for utilizing more of the area in cabinets and under shelves for storage.

White	805.344.33
-------	------------

**PÅLYCKE clip-on basket, 36x26x14 cm.** Perfect for utilizing more of the area in cabinets and under shelves for storage.

White	005.344.32
Anthracite	606.051.29

**PÅLYCKE clip-on hook rack.**

Anthracite	206.051.31
White	805.411.55

**PÅLYCKE multipurpose rack.**

Anthracite	806.051.33
White	905.344.37

**PÅLYCKE clip-on hook rack.** Helps you utilize more of the area in your kitchen for storage.

White	805.411.55
-------	------------

**PÅLYCKE clip-on multi-purpose rack.** Perfect for utilizing more of the area in cabinets and under shelves for storage.

White	905.344.37
-------	------------

**PÅLYCKE clip-on towel rack.** Helps you utilize more of the area in your kitchen for storage.

White	505.344.39
-------	------------

Rails and accessories



SUNNERSTA hook, 5-p.

White 403.037.26



SUNNERSTA kitchen roll holder, white. Max. load 1 kg.

W28.4×11.5×H4.7 cm 305.098.03



SUNNERSTA rail with 4 hooks/2 containers. L60×H14×D13 cm. Including 1 rail, 2 containers and 4 hooks.

White 404.545.60



SUNNERSTA shelf/dish drainer, W36.5×D15 cm. Max. load 4 kg.

White 304.439.30



SUNNERSTA shelf 25, W25×D14×H5 cm. Max. load 2 kg.

White 904.439.27



SKATTÅN container, 12×34 cm. Instead of storing things in drawers, you can have everything from cutlery to accessories close at hand. Hang this container on a hook under ENHET frames to quickly turn the space into practical storage.

Black 304.657.57



SKÅDIS container.

White 203.207.98
Black 405.699.24



SKÅDIS container with lid, 3-p.

White 803.359.09
Black 905.699.26



SKÅDIS shelf.

White 003.207.99
Black 805.699.41



SKÅDIS hook rack

White 405.198.87
Black 005.699.35



SKÅDIS storage basket, set of 3.

White 505.177.60
Black 405.699.43



SKÅDIS magazine holder.

Black 205.699.39



SKÅDIS clip, 2-p

White 003.216.14
Black 805.699.22



SKÅDIS hook, 5-p.

White 203.208.02
Black 605.699.37



SKÅDIS hook, 2-p.

White 503.356.18
Black 905.699.31



SKÅDIS elastic cord, 3-p.

Grey 403.216.31
Black 505.699.28



SKÅDIS hook, 3-p.

Black 505.699.33



SKÅDIS tool holder.

Black 905.699.45



SKÅDIS hook, 5-p.

White 205.198.88



SKÅDIS 7-piece accessories set.

White 205.864.20
Black 605.864.18



SKÅDIS display shelf.

White 205.918.41

Protectors

The drawer mats and shelf protectors dampen sounds and protects the shelves and drawers from scratches. Also the lock for kitchen drawers and cabinet is an easy

way to make your kitchen a safer and more secure place for your children.



UPPDATERA drawer mat, grey. Dampens sounds and protects drawers and shelves against scratching.

48 cm	505.498.36
96 cm	405.510.52



VARIERA drawer mat. Dampens sounds and protects drawers and shelves against scratching.

Transparent	800.128.53
White	002.388.65



UTRUSTA lock kitchen drawers/cabinets, 4-p. Children are curious and can use your kitchen in ways you can never imagine. With this lock, you can easily stop them from accessing cabinets and drawers – without limiting their natural curiosity.

Black	804.536.10
-------	------------

Step stools

Sometimes all you need is a little boost. Our step stools put the top shelves within reach.



BEKVÄM step stool, W43xD39xH50 cm. Max load 100 kg.

Aspen	102.255.89
Black	404.638.52
White	401.788.88
Acacia	705.695.45



BEKVÄM step stool, 3 steps, H63 cm. Max. load 100 kg.

Beech	901.904.11
Black	902.198.29



BÄSINGEN step stool with handrail, 2-steps

Anthracite	005.573.67
------------	------------



HADDARP step stool, 4-way.

Black-grey	605.819.44
Orange	206.007.08

Trolleys

A trolley is a quick, easy and affordable solution giving you more flexible storage space.



RÅSKOG trolley, L28×W38×H61 cm. Flexible trolley that fits into the smallest spaces and moves wherever you need extra storage.

Beige-yellow	905.917.67	
Black	805.867.90	
Grey-blue	105.917.66	
Grey-green	505.917.69	
White	005.867.89	
Beige	406.297.15	New
Pink	206.297.16	New
Light Turquoise	006.297.17	New



RÅSKOG trolley, L35×W45×H77 cm. The trolley is easy to adapt to suit what you want to store in it because the middle shelf is adjustable.

Black	903.339.76	
White	203.829.32	
Beige-yellow	005.916.63	
Grey-green	205.916.62	
Grey-blue	405.867.87	
Beige	306.297.11	New
Pink	706.297.14	New
Light turquoise	906.297.13	New



NORRÅVA lid, bamboo. This bamboo lid is a perfect fit on the top tier of RÅSKOG trolley, adding a warm touch while hiding cluttering objects like kitchen utensils, desk accessories, keys and chargers

36x26 cm	505.917.74
42x31 cm	005.428.61



JUTERSBO trolley, Ø36 cm, H86 cm.
Grey-green 404.989.41



VESKEN trolley, L18×W54×H71 cm

Black	604.712.24
White	004.712.22



NISSAFORS trolley, L50.5×W19×H67 cm. This trolley fits in the smallest of spaces and can be moved to wherever you need it. Use it as extra storage for all your kitchen utensils, desk accessories or for gloves, keys and mobile phones.

Black	106.029.82
White	406.029.85



NISSAFORS trolley, L50.5×W30×H83 cm. The sturdy construction and four castors make it easy for you to move the trolley and use it wherever you like. It even fits in tight spaces because of its small size.

Black	203.997.77
White	404.657.33
Beige	405.858.01
Light green	106.067.82



HORNAVAN trolley, L26×W48×H77 cm
White 702.438.73



KUNGSFORS kitchen trolley, L60×W40×H90 cm, stainless steel. May also be used in high humidity areas.

803.349.24



LOSHULT trolley, pine.

38×38×82 cm	405.762.79
-------------	------------



FÖRHÖJA kitchen trolley, L100×W43×H90 cm, birch. Open storage with space for 9 bottles on each shelf.

800.359.20

Storage



RESARÖ mobile drop-leaf table with storage.

Pine	205.333.37
------	------------



SUNNERSTA storage unit, 56×38 cm.

	705.002.78
--	------------

Containers and baskets

With clever containers and boxes inside drawers and cabinets as well as on the wall, you'll keep things organised and easy to find. A helpful tip is to keep things

close to where they are used as this enables a smooth workflow.



RISATORP basket, L25×W26×H18 cm. This basket is handy for storing and organising smaller things – and bringing them with you when setting the table or wherever needed.

White	902.816.18
Dark grey	205.887.11
Pink	805.886.90



RISATORP basket, 27×42×23 cm.

White	205.276.33
-------	------------



UPPDATERA cutlery caddy, W12×L12×H24.3 cm. An attractive cutlery stand that looks just as good inside a drawer as out in the open on a shelf or kitchen worktop.

Anthracite	404.331.05
------------	------------



UPPDATERA box, 24×17 cm. This multi-use box with matt surface is handy for storing and organising smaller things – and bringing them with you wherever needed. Keep it in a cabinet, on a worktop or anywhere you want at home.

Anthracite	805.040.49
Grey-blue	006.105.48
Red-brown	606.105.50
White	205.464.67



UPPDATERA box, 34×24 cm.

White	405.464.71
Anthracite	206.105.52



UPPDATERA box, 50×12 cm.

Anthracite	505.807.99
------------	------------



SKATTÅN container, 12×34 cm. Instead of storing things in drawers, you can have everything from cutlery to accessories close at hand. Hang this container on a hook under ENHET frames to quickly turn the space into practical storage.

Black	304.657.57
-------	------------



KUNGSFORS container, 12.0×26.5 cm. Helps free up space on your worktop while keeping cooking utensils close at hand.

Stainless steel	003.349.18
-----------------	------------



KUNGSFORS container, W24×D12×H26.5 cm. The container has a removable tray underneath that collects water from cutlery and other items that you store and keeps them dry.

Stainless steel	603.349.20
-----------------	------------



SUNNERSTA container, W12×D11×H13 cm. Fits SUNNERSTA rail, trolley, mini-kitchen and adjustable rack.

White	503.037.35
Beige	106.060.65
Blue-grey	306.060.50
Bright orange	706.060.48

Guarantees

IKEA kitchens are made to stand up to the rough and tumble of everyday life in your home. Day in, day out, year after year. In fact, we're so confident of the quality of your products that we offer generous guarantees on our kitchens, worktops, appliances and taps – all for free.

METHOD kitchen system

25-year guarantee

What products are covered under this guarantee?

This guarantee applies to domestic kitchen use only and covers defects in materials and workmanship.

This guarantee covers all of the following parts of the METHOD kitchen system: • Cabinets (except for TORNVIKEN and VADHOLMA) • Fronts • UTRUSTA hinges • MAXIMERA fully extending drawers • UTRUSTA shelves • Plinths • Legs • Cover panels • Deco strips/mouldings • Worktops • Wall panels • Sinks (except FYNDIG) • EXCEPTIONELL fully-extending push-to-open drawers.

Products not covered under this guarantee:

FÖRVARA drawers, UTRUSTA wire baskets, UTRUSTA dish drainer, TORNVIKEN, TUTEMO, VADHOLMA, ÄSPINGE kitchenette (except FYNDIG sink) and ÖNNERUP kitchenette (except FYNDIG sink) have a 10-year guarantee. UTRUSTA push opener, electrical has a 5-year guarantee. KNOXHULT kitchen has a 5-year guarantee.

Products not covered under 25-, 10- or 5-years guarantee:

Knobs, handles, SUNNERSTA kitchen and FYNDIG sink.

SUNNERSTA kitchen has a 2-year guarantee.

What will IKEA do to correct the problem?

IKEA will examine the product and decide, at its sole discretion, if it is covered under this guarantee. If considered covered, IKEA through its own service operations, will then, at its sole discretion, replace it with the same or a comparable product. If the item is no longer sold by IKEA, IKEA will provide an appropriate replacement. It is IKEA that determines, at its sole discretion, what constitutes an appropriate replacement.

Conditions for the guarantees

The guarantees are valid from the date of purchase at IKEA or date of delivery if later. The original purchase receipt is required as proof of purchase.

Exclusions

The guarantees do not apply to products that have been stored or assembled incorrectly, used inappropriately, abused, misused, altered, or cleaned with wrong cleaning methods or wrong cleaning products. The guarantees do not cover normal wear and tear, cuts or scratches, or damage caused by impacts or accidents. The guarantees do not apply if products have been placed outdoors or in a humid environment or if the products have been used for non-domestic purposes (unless otherwise stated). The guarantees do not cover consequential or incidental damages. Follow our assembly instructions and care instructions carefully.

This guarantee does not apply if the products have been used for public use, outdoors or in a corrosive environment.

25

The METHOD kitchen system and worktops have a 25-year guarantee.

10

The ENHET kitchen and kitchen mixer taps have a 10-year guarantee.

5

KNOXHULT kitchen as a 5-year guarantee.

For customers in the US only: some states do not allow the limitation or exclusion of incidental or consequential damage, so this limitation or exclusion may not apply to you.

Care instructions

To be able to rely on this guarantee you need to follow the specific care instructions for every product. You will find all care instructions in the IKEA stores and on the IKEA web site: www.IKEA.co.uk

General legal rights:

This guarantee gives you specific legal rights. This guarantee does not, in any way, affect the rights given to you by law.

How to reach us if you need service:

Contact your local IKEA store. You will find the address and phone number in the IKEA catalogue or at www.IKEA.co.uk Save your sales receipt as proof of purchase. Proof of purchase is required for the guarantees to be valid.

For more information, see the IKEA Kitchen Guarantee brochure.

ENHET kitchen system

10-year guarantee

What products are covered under this guarantee:

This guarantee applies to domestic kitchen use only and covers defects in materials and workmanship. This guarantee covers all the following parts of ENHET kitchen system: • Cabinets • Open frames • Fronts • Hinges • Drawers • Shelves • Legs • Accessories (swivel shelf, hanging shelf insert, rail for hooks and hooks).

What will IKEA do to correct the problem?

IKEA will examine the product and decide, at its sole discretion, if it is covered under this guarantee. If considered covered, IKEA through its own service operations, will then, at its sole discretion, replace it with the same or a comparable product. If the item is no longer sold by IKEA, IKEA will provide an appropriate replacement. It is IKEA that determines, at its sole discretion, what constitutes an appropriate replacement.

Conditions for the guarantees

The guarantees are valid from the date of purchase at IKEA or date of delivery if later. The original purchase receipt is required as proof of purchase.

Exclusions

The guarantees do not apply to products that have been stored or assembled incorrectly, used inappropriately, abused, misused, altered, or cleaned with wrong cleaning methods or wrong cleaning products. The guarantees do not cover normal wear and tear, cuts or scratches, or damage caused by impacts or accidents. The guarantees do not apply if products have been placed outdoors or in a humid environment or if

the products have been used for non-domestic purposes (unless otherwise stated). The guarantees do not cover consequential or incidental damages. Follow our assembly instructions and care instructions carefully.

This guarantee does not apply if the products have been used for public use, outdoors or in a corrosive environment.

For customers in the US only: some states do not allow the limitation or exclusion of incidental or consequential damage, so this limitation or exclusion may not apply to you.

Care instructions

To be able to rely on this guarantee you need to follow the specific care instructions for every product. You will find all care instructions in the IKEA stores and on the IKEA web site: www.IKEA.co.uk

General legal rights:

This guarantee gives you specific legal rights. This guarantee does not, in any way, affect the rights given to you by law.

How to reach us if you need service:

Contact your local IKEA store. You will find the address and phone number in the IKEA catalogue or at www.IKEA.co.uk. Save your sales receipt as proof of purchase. Proof of purchase is required for the guarantees to be valid.

For more information, see the IKEA Kitchen Guarantee brochure.

KNOXHULT kitchen

5-year guarantee

This guarantee covers all the following parts of KNOXHULT kitchen system:

- Cabinets
- Fronts
- Hinges
- Drawers
- Shelves
- Worktops

Kitchen mixer taps

10-year guarantee

What is covered under this Guarantee?

The 10-year Guarantee is valid for all kitchen mixer taps at IKEA. This Guarantee applies to domestic use only and covers defects in material and workmanship in all kitchen mixer taps.

What is not covered under this Guarantee?

This Guarantee does not cover normal wear and tear, cuts or scratches, or damage caused by impacts, accidents or waterborne debris.

What will IKEA do to correct the problem?

IKEA will examine the product and decide, at its sole discretion, if it is covered under this Guarantee. If considered covered, IKEA through its own service operations, will then, at its sole discretion, replace it with the same or a comparable product. If the item is no longer sold by IKEA, IKEA will provide an appropriate replacement. It is IKEA that determines, at its sole discretion, what constitutes an appropriate replacement.

Conditions for the Guarantees

The Guarantees are valid from the date of purchase at IKEA. The original purchase receipt is required as proof of purchase.

Exclusions

The Guarantees do not apply to products that have been stored or assembled incorrectly, used inappropriately, abused, misused, altered, or cleaned with wrong cleaning methods or wrong cleaning products. This Guarantee does not cover normal wear and tear, cuts or scratches, or damage caused by impacts, accidents or waterborne debris. It also does not apply to the filter/aerator which should be cleaned regularly or replaced when worn out. Follow our assembly instructions and care instructions carefully.

This Guarantee does not apply if the products have been used for public use, outdoors or in a corrosive environment. It also does not cover accidental damage.

For customers in the US only: some states do not allow the limitation or exclusion of incidental or consequential damage, so this limitation or exclusion may not apply to you.

Care instructions

To be able to rely on this Guarantee you need to follow the specific care instructions for every product. You will find all care instructions in the IKEA stores and on the IKEA web site: www.IKEA.co.uk

General legal rights:

This Guarantee gives you specific legal rights. This Guarantee does not, in any way, affect the rights given to you by law.

How to reach us if you need service:

Contact your local IKEA store. You will find the address and phone number in the IKEA catalogue or at www.IKEA.co.uk. Save your sales receipt as proof of purchase. Proof of purchase is required for the Guarantees to be valid.

Worktops and wall panels

25-year guarantee

What products are covered under this Guarantee?

This Guarantee applies to domestic kitchen use only. Worktops and wall panels.

From alterations performed after initial installation. The Guarantee is effective only if the owner of the worktop and wall panel is the occupant of an indoor single-family residence.

Steps to buying an IKEA kitchen

IKEA kitchens are designed so that you can install them yourself. To the right are some steps to ensure the process goes well for you. Should you have any questions, don't hesitate to talk to our kitchen experts at your local IKEA store or visit us at: [IKEA.co.uk](https://www.ikea.co.uk).



Find your style

It's time to dream a little, look at some ideas, consider your needs and decide what an ideal kitchen means for you. This buying guide is made to give you an overview of some of the possibilities but there is so much more. You can find more ideas and inspiration on our website, in the kitchen brochure or by visiting your local IKEA store.



Measure

When measuring it's important to take your time and get your measurements correct. This will form the foundation of all your planning. To see exactly what to measure, view the planning guide Your new IKEA kitchen at [IKEA.co.uk](https://www.ikea.co.uk).

→ **We can do it for you**
To learn more about our Measuring services see [page 04](#)



Plan

Planning your kitchen is when your dreams and ideas take shape. Use the online IKEA Kitchen Planner to start planning your kitchen. Or, if you would like some advice we have kitchen planners ready in the store to help.

→ **We can do it for you**
To learn more about our Kitchen planning services, view [page 04](#)



Order

When you're satisfied with your planning, visit your local IKEA store and talk to our kitchen experts. They will go over your kitchen plan with you, and help you with anything you're not sure about. When you are ready you can order and we can help with delivery.

→ **We can do it for you**
To learn more about our Delivery service, see [page 04](#)



Install

IKEA kitchens are designed to be installed by you, but we're here to offer as much help as you feel you need. You can start by picking up the kitchen installation guide from the store which gives step-by-step instructions on installing your kitchen.

→ **We can do it for you**
To learn more about our Kitchen installation service, view [page 04](#)

More tools and guidance

Buying guides



Appliances

This buying guide is filled with appliances developed to match perfectly with our kitchens. Inside you'll find detailed information about styles, functions and prices. Flip it through online at [IKEA.co.uk](https://www.ikea.co.uk)



METOD kitchen cabinets

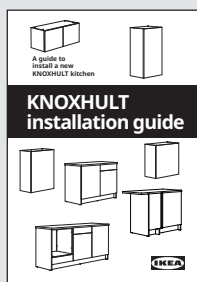
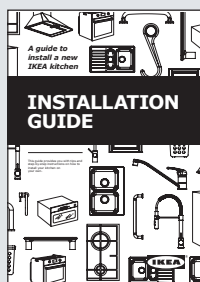
This buying guide offers you all you need to know to plan the inside of your cabinets and drawers in the most efficient way. Read it online at [IKEA.co.uk](https://www.ikea.co.uk)



KNOXHULT kitchen system

This buying guide offers you all you need to know to plan the inside of your cabinets and drawers in the most efficient way. Read it online at [IKEA.co.uk](https://www.ikea.co.uk)

Installation guides



Our kitchen installation guides gives you tips and helpful information on how to install your new IKEA kitchen correctly. You'll find it online at [IKEA.co.uk](https://www.ikea.co.uk)

Planning guide



Our kitchen planning guide is your guide to measuring, ordering and installing your new IKEA kitchen. Check it out at [IKEA.co.uk](https://www.ikea.co.uk)

Design and planning tools



The IKEA Kitchen planner

Want a kitchen that is perfect for your unique space? Design the METOD kitchen of your dreams in a 3D environment. Our free kitchen planner, paired with your imagination, can help bring your ideal kitchen to life. We can show you a realistic picture of how to create a space that works for you. Print out your drawings and product list at home, or save to the IKEA website. At the IKEA store you can discuss your design and get lots of advice and guidance from our kitchen experts. Learn more at [IKEA.co.uk](https://www.ikea.co.uk)

KNOXHULT kitchen planner

Looking to create a practical kitchen with ease? The KNOXHULT kitchen planner is a simple design tool that can help you create a solution catered to your very needs. This tool allows you to select cabinets and combine them in a virtual environment, helping you visualize your kitchen setup. Once you select your preferred units, you can customize their arrangement to suit your needs, space, and preferences. Bring your KNOXHULT kitchen to life with just a few clicks. Discover more and get started at [IKEA.co.uk](https://www.ikea.co.uk)

