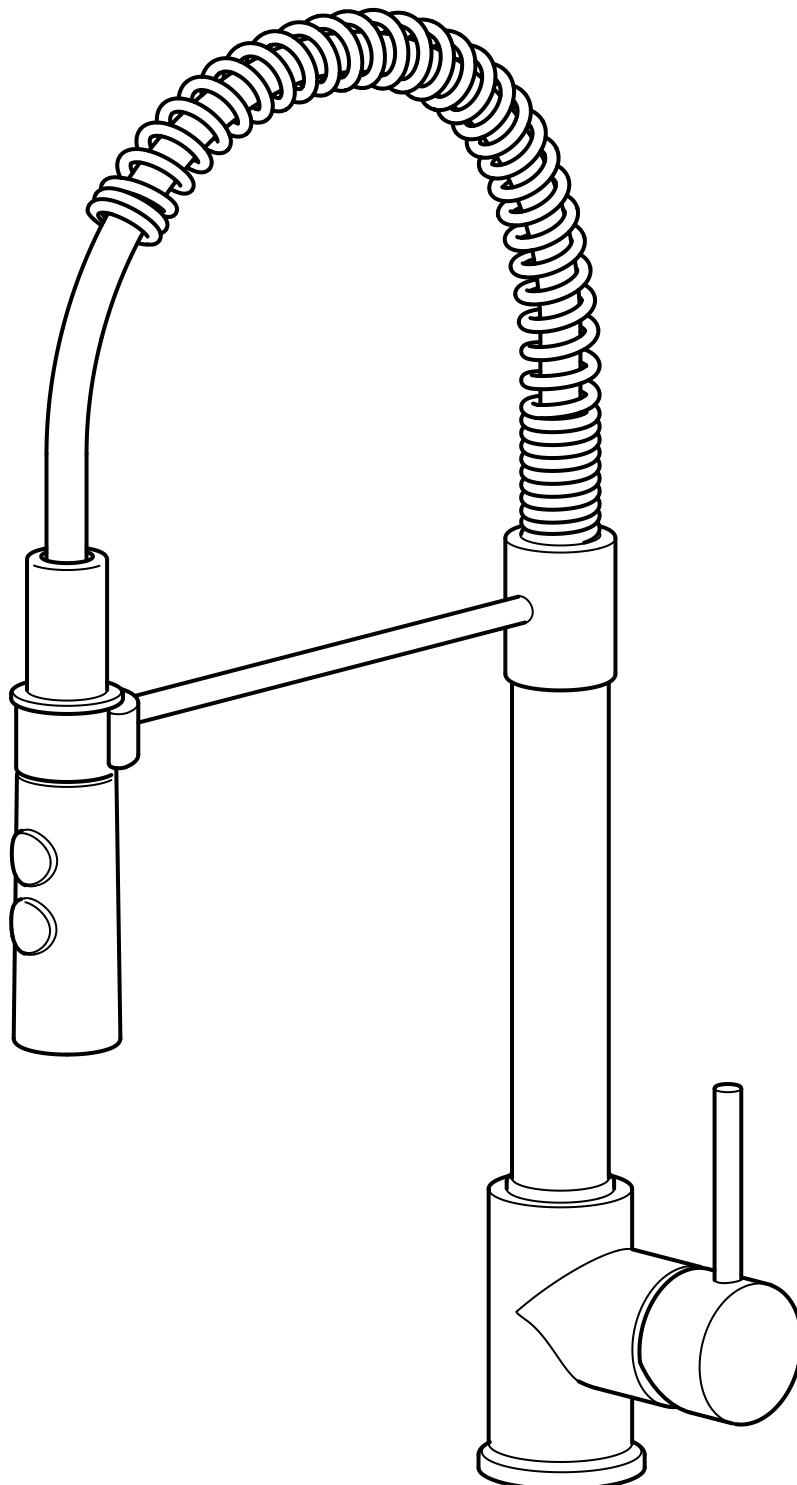
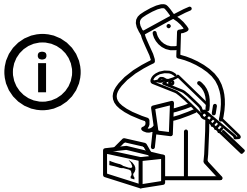


VIMMERN



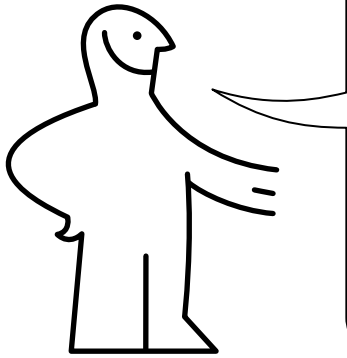
Design and Quality
IKEA of Sweden



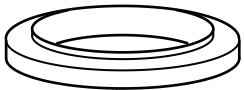
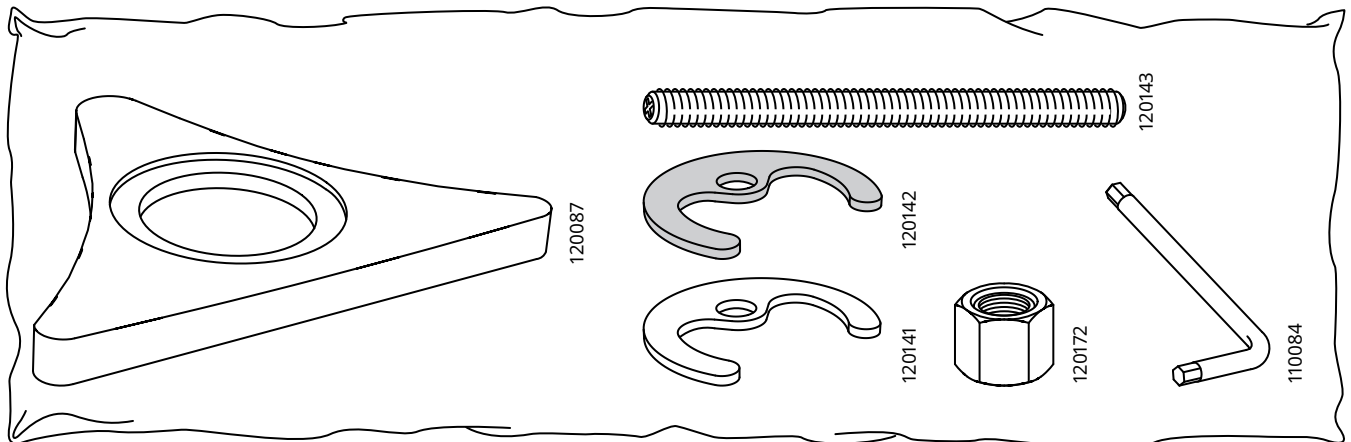
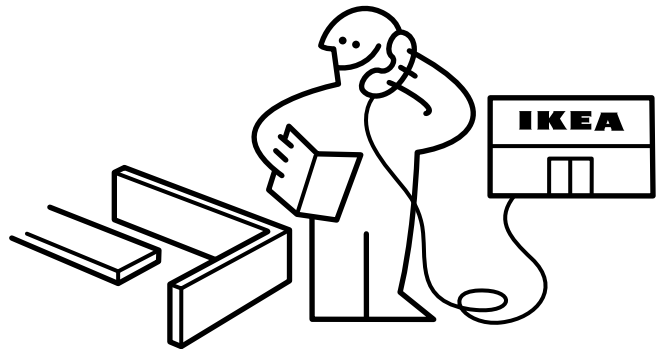
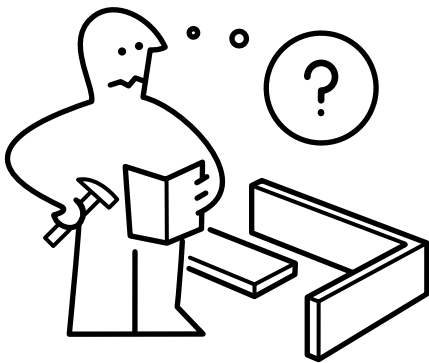
Installation must be performed in compliance with current local construction and plumbing regulations. If in doubt, contact a professional.

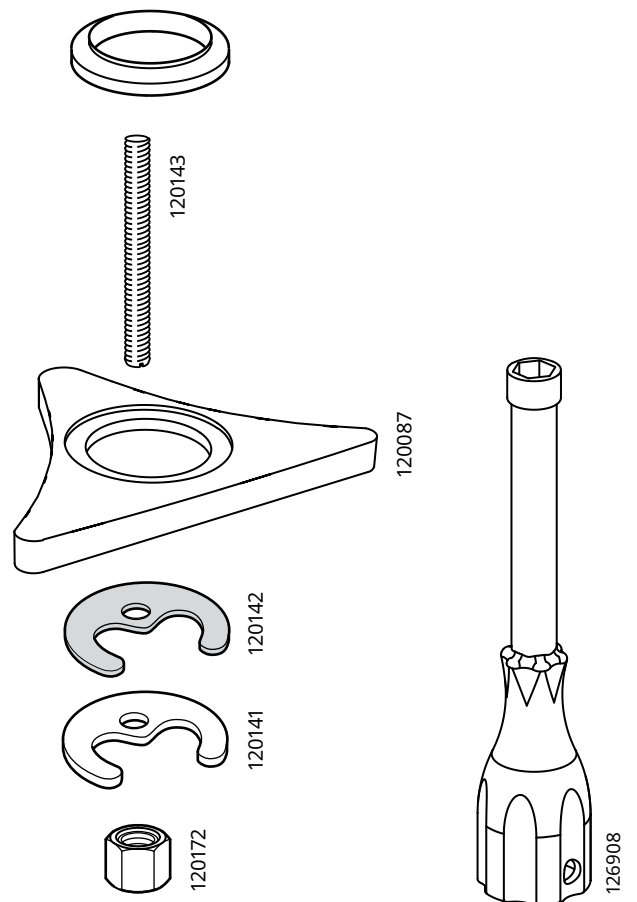
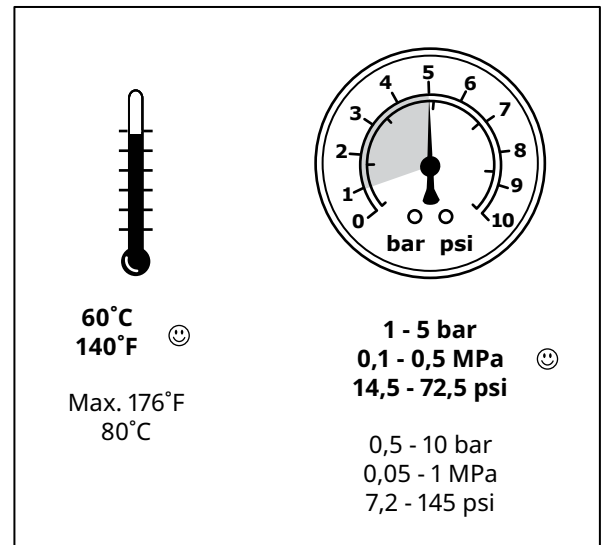
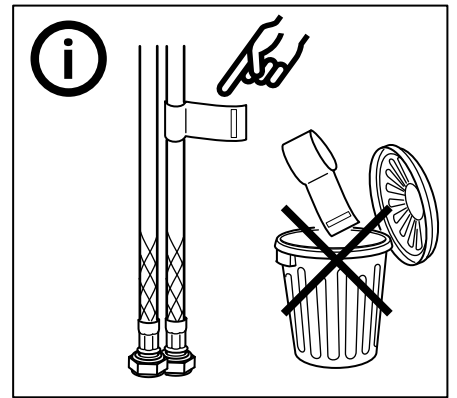
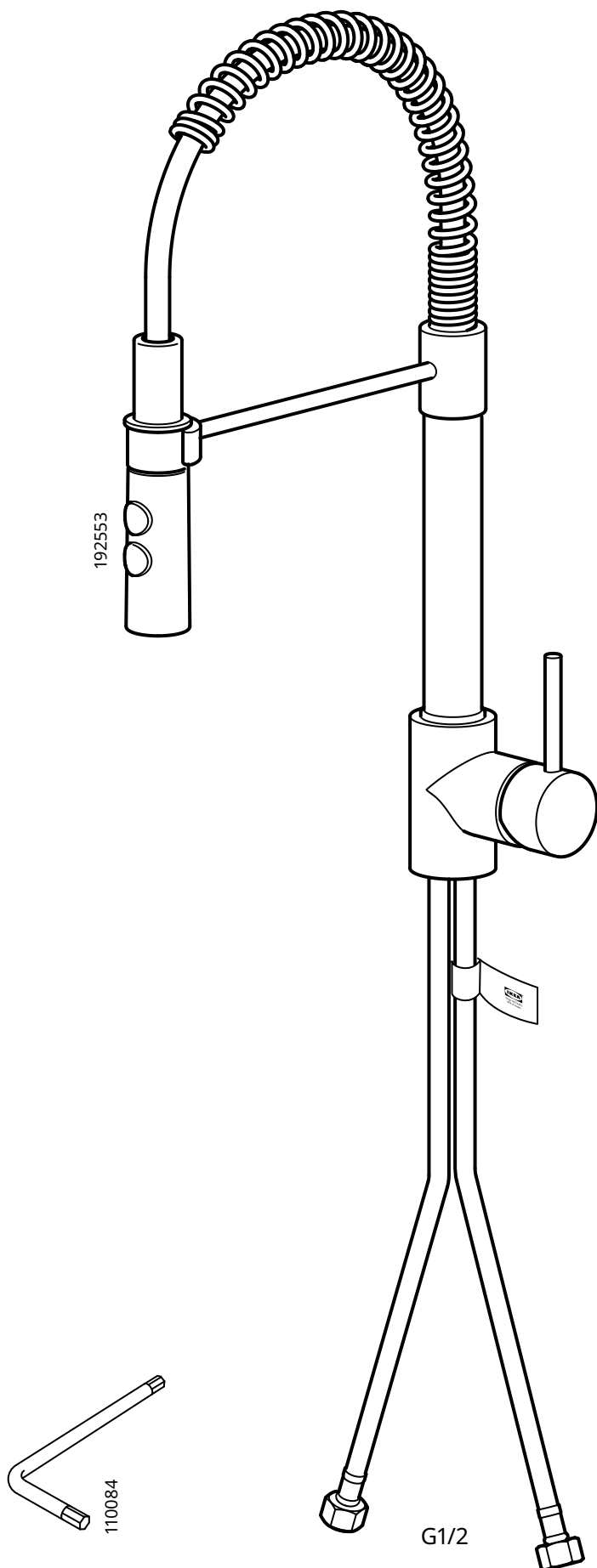


Switch off main shut-off valve before changing mixer tap.

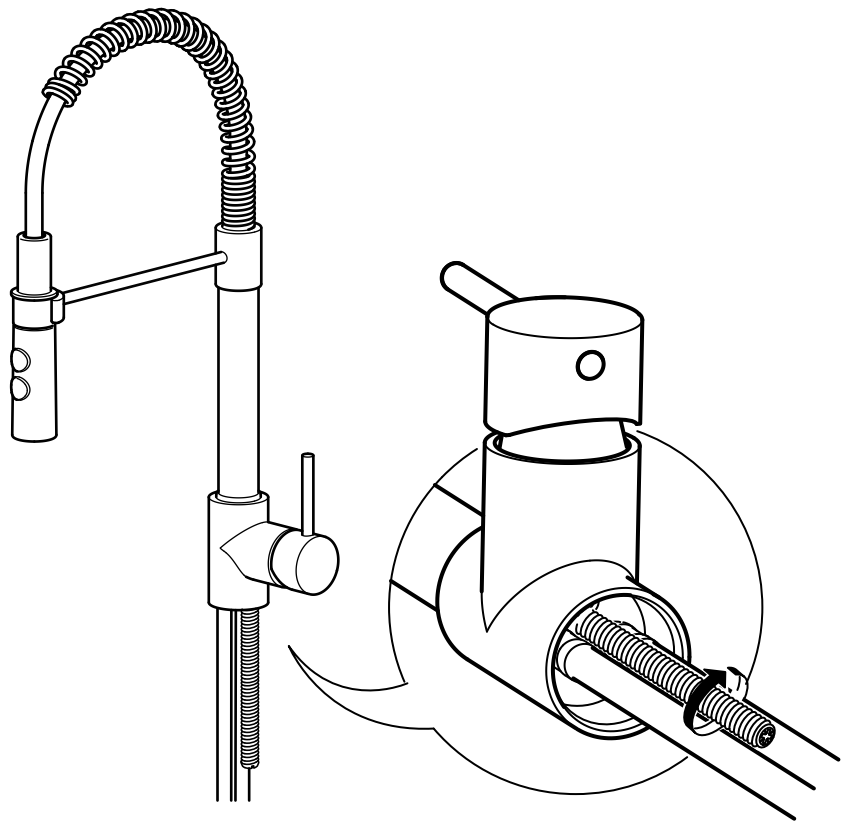


2x

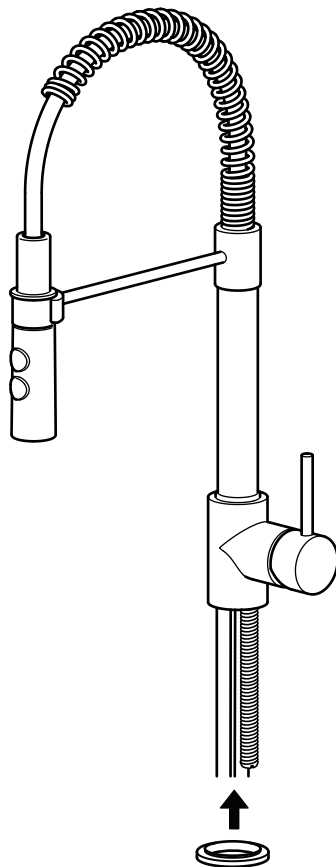


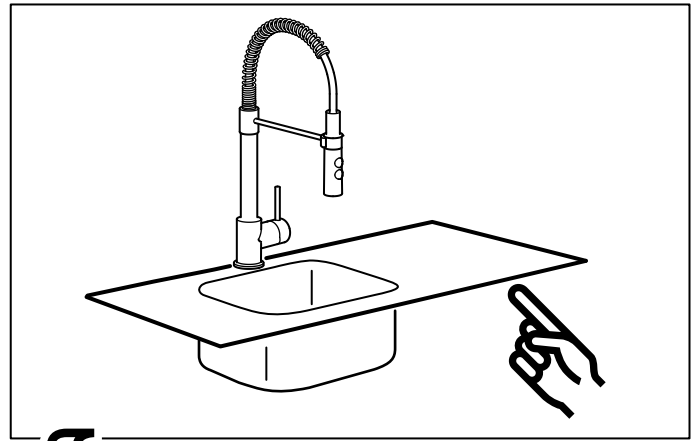
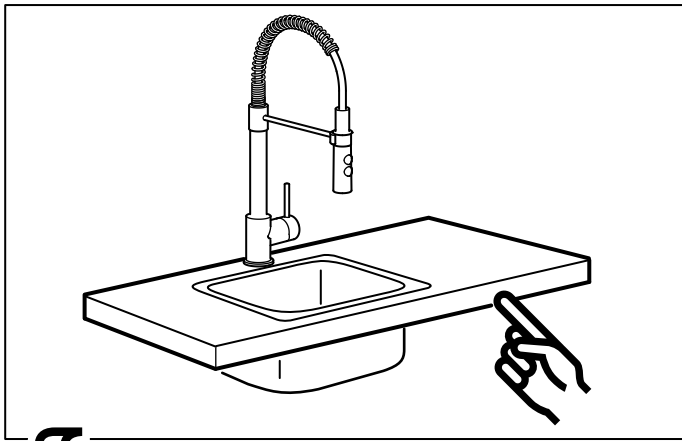


1



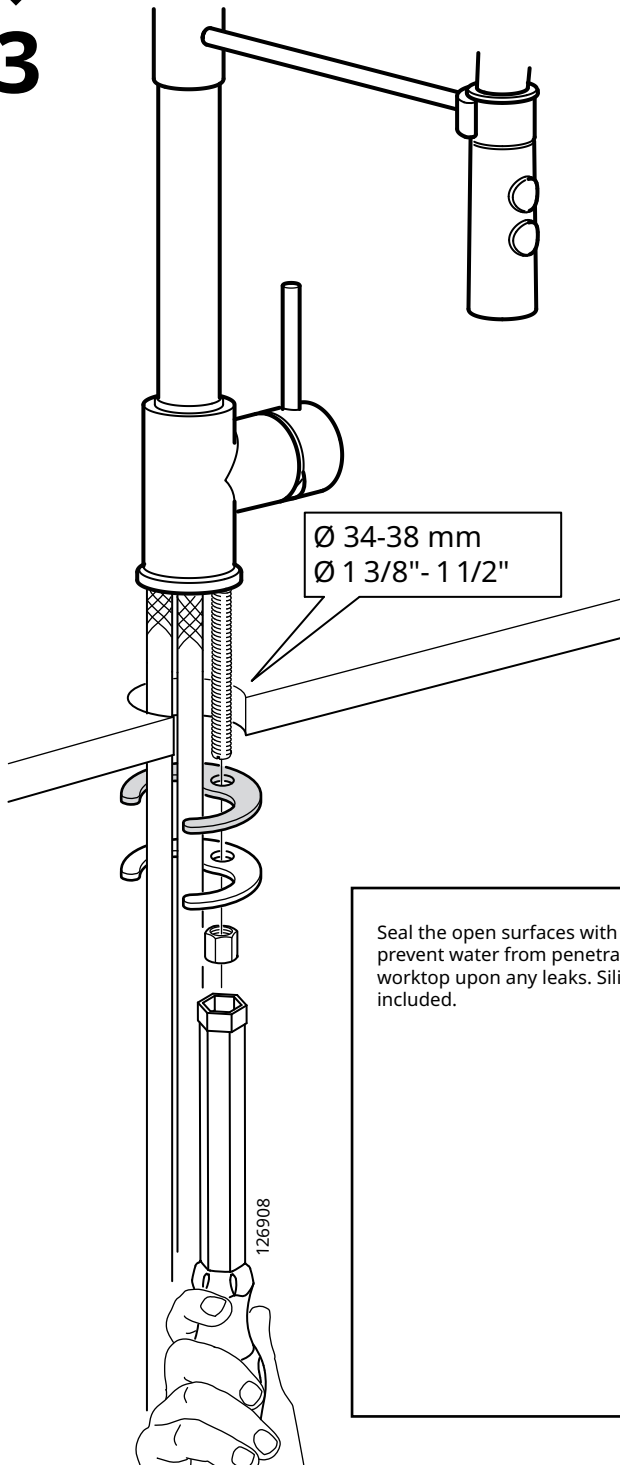
2



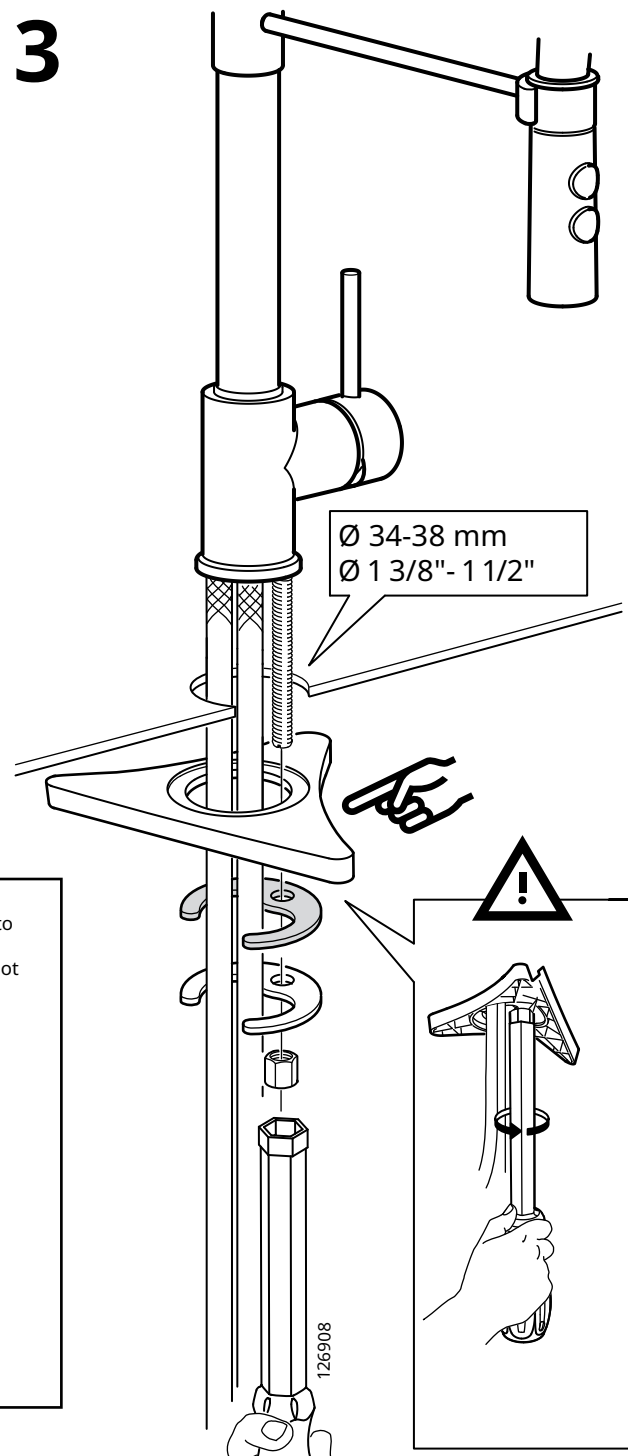


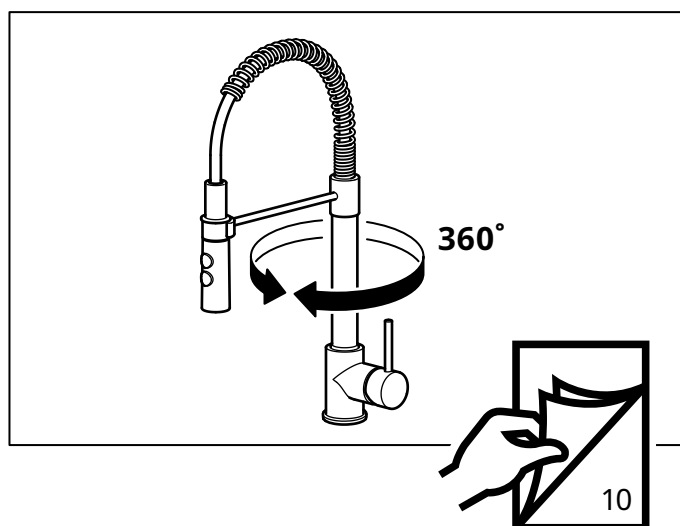
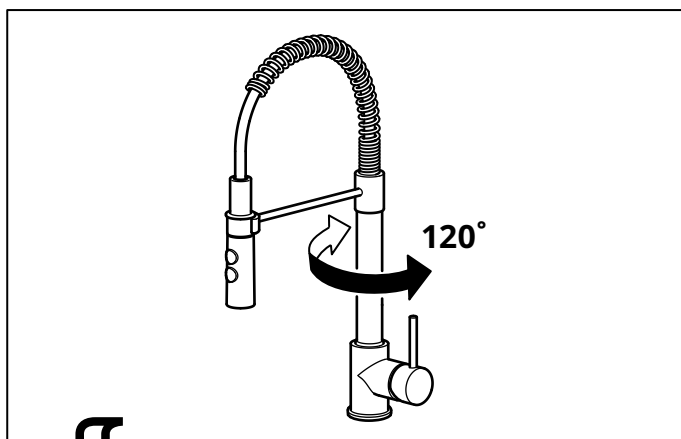
3

3

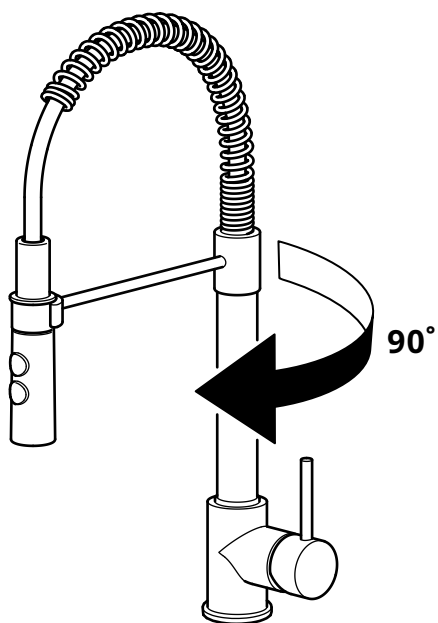


Seal the open surfaces with silicone to prevent water from penetrating the worktop upon any leaks. Silicone is not included.

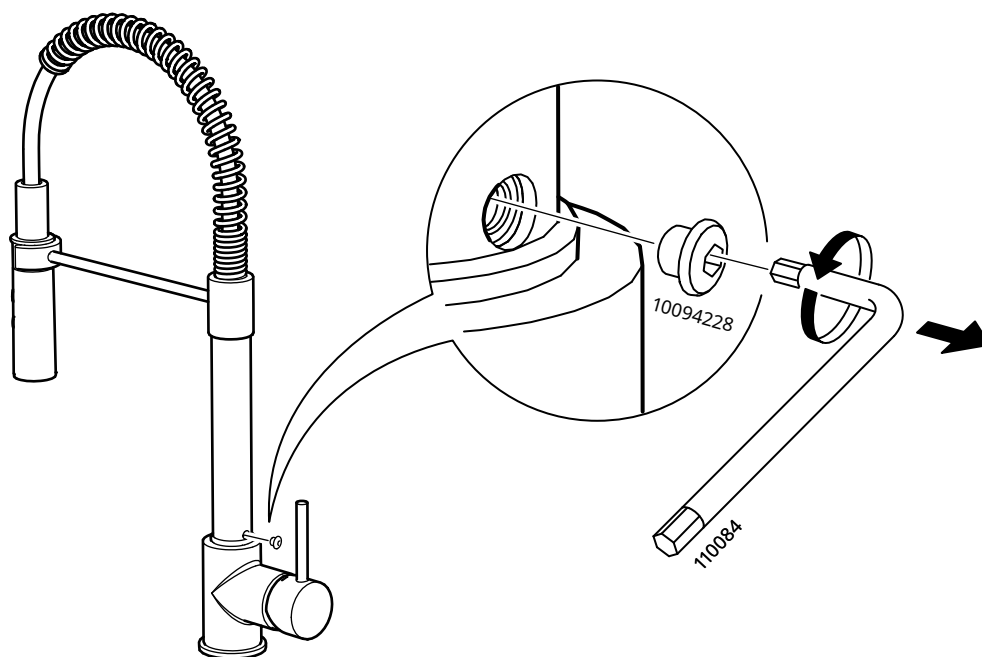




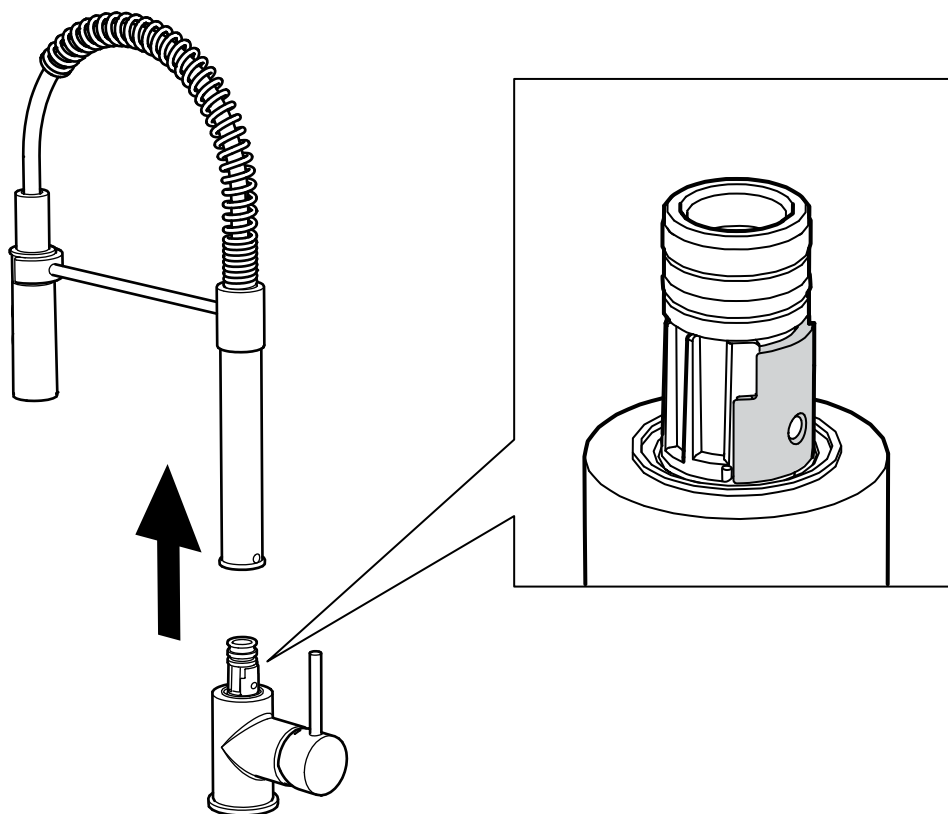
4



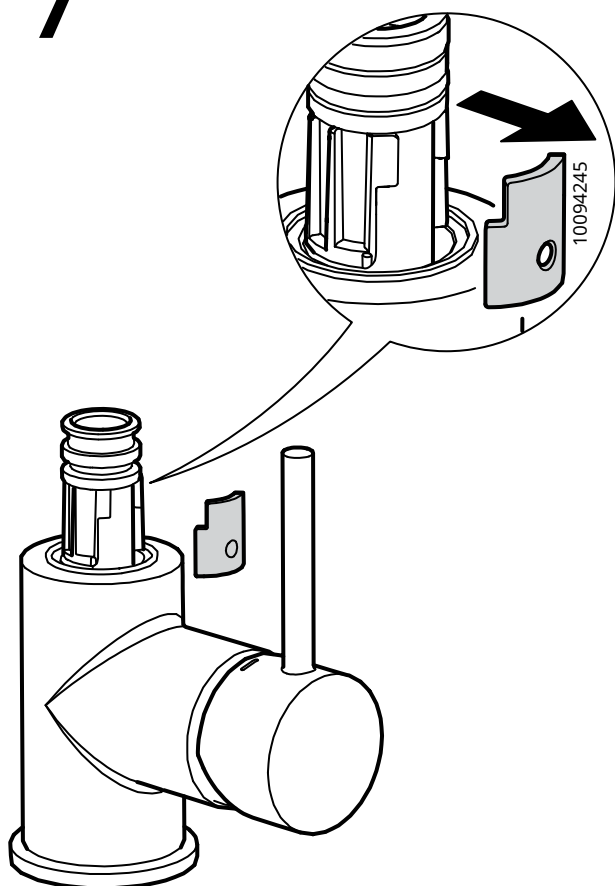
5



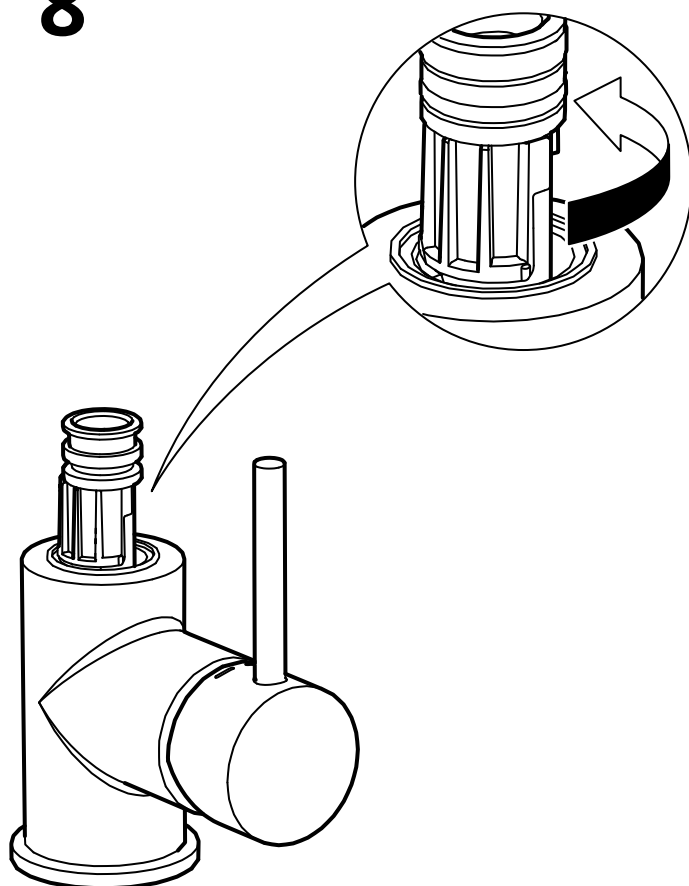
6



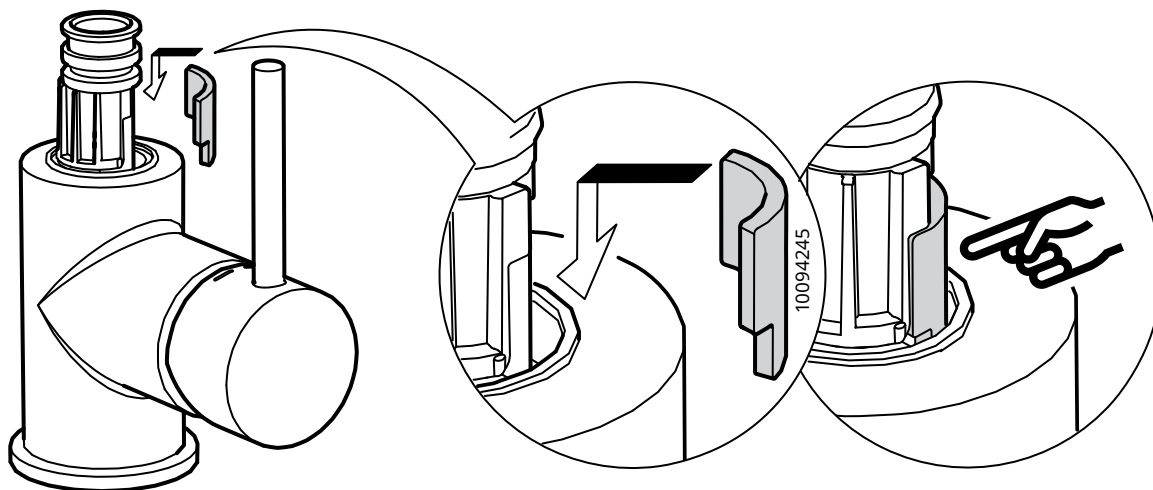
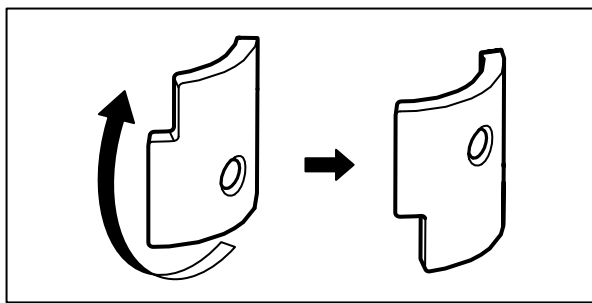
7



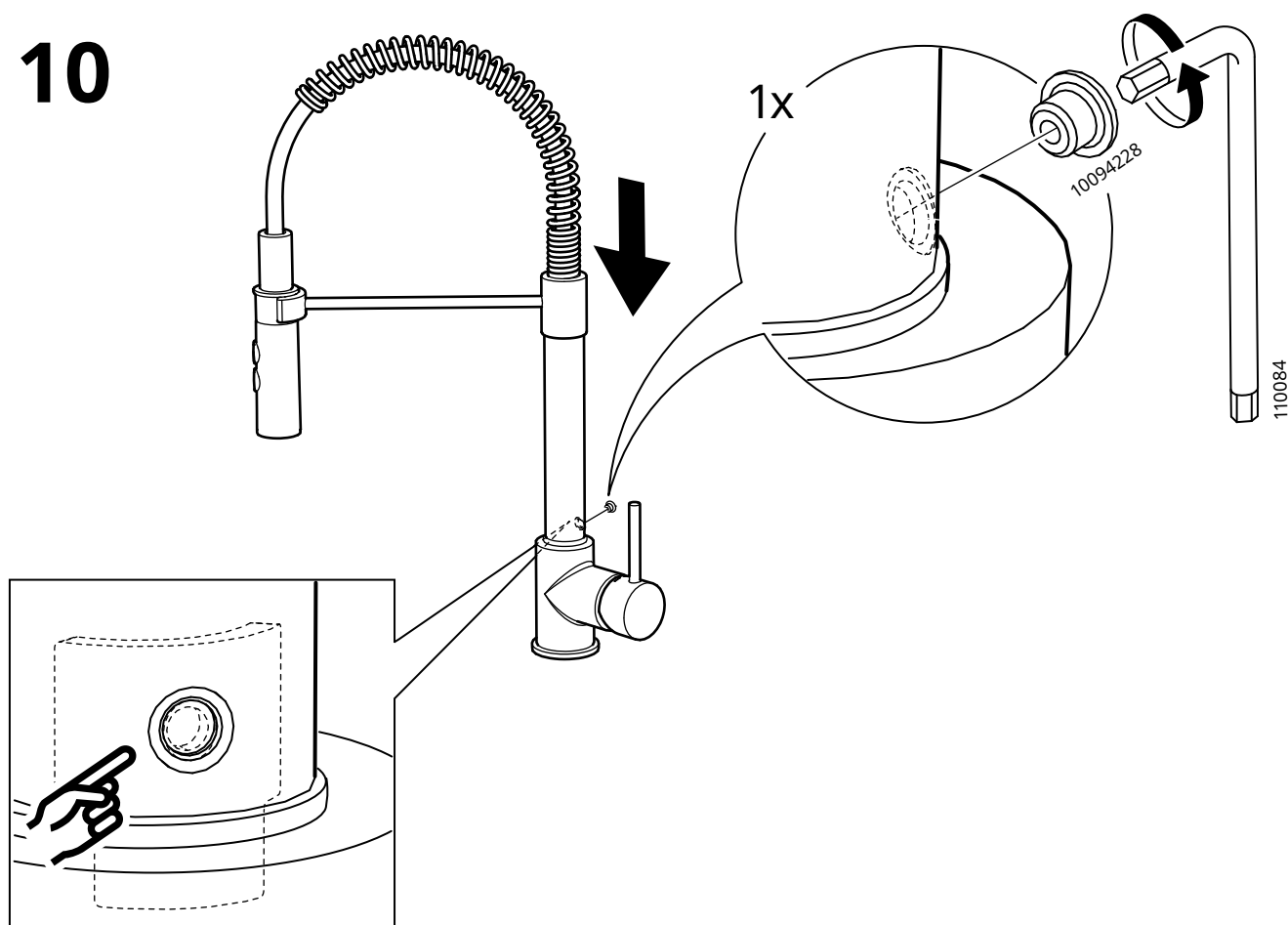
8



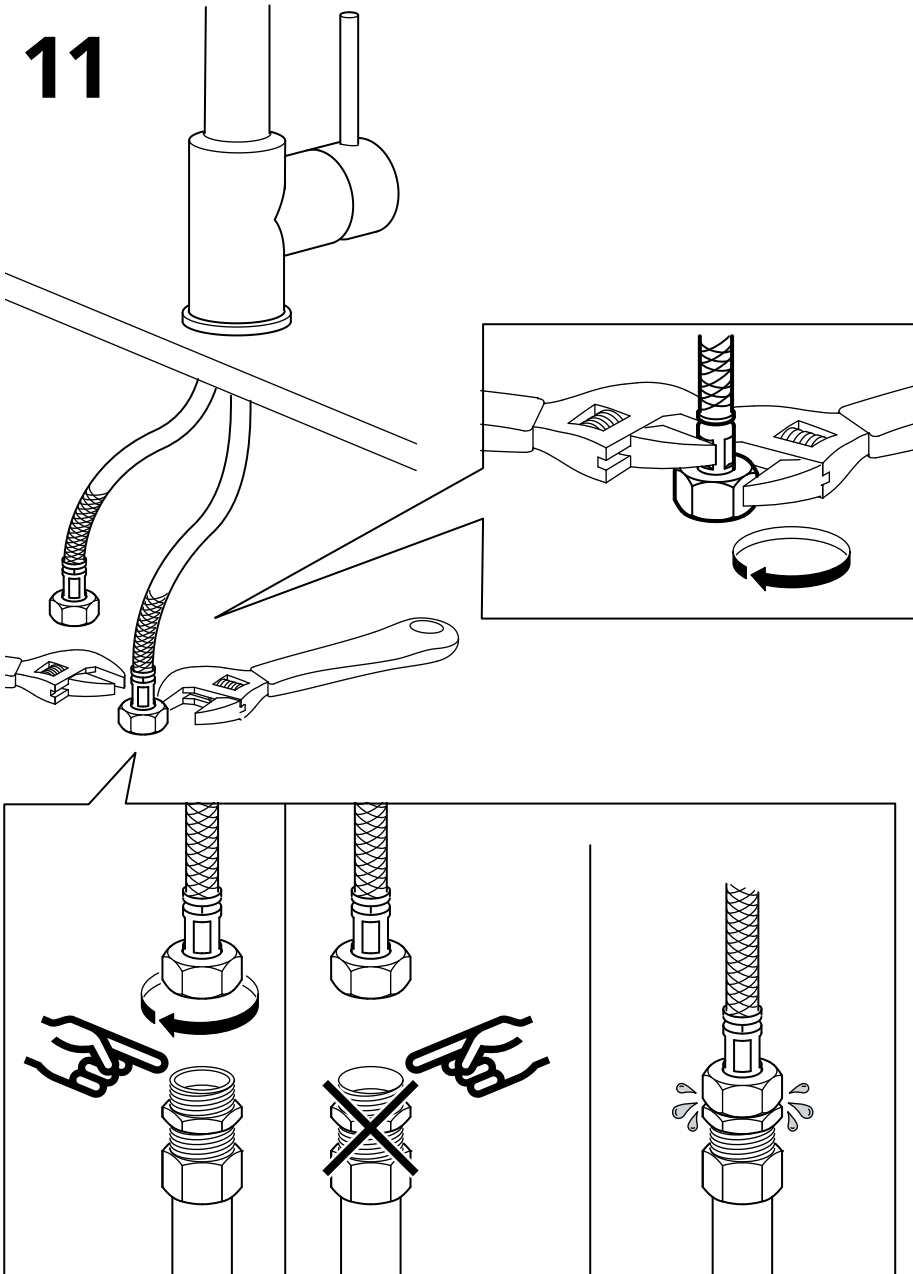
9



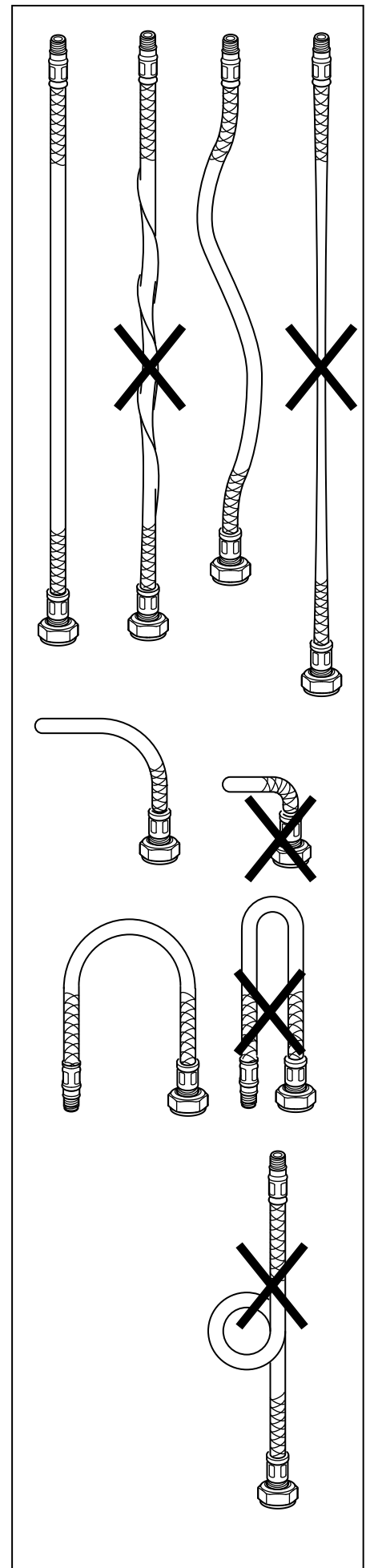
10

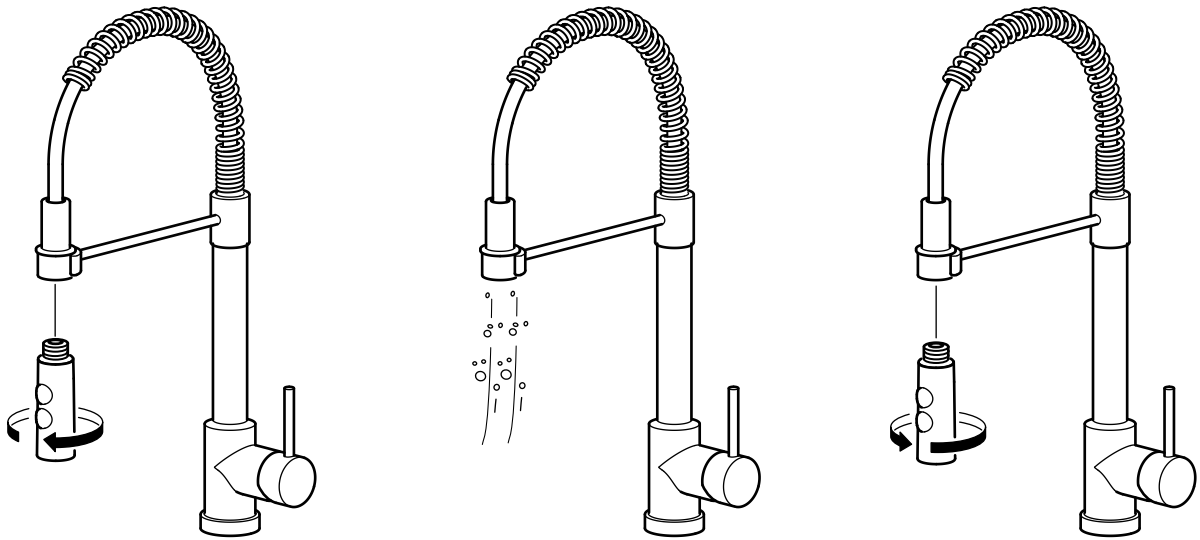


11

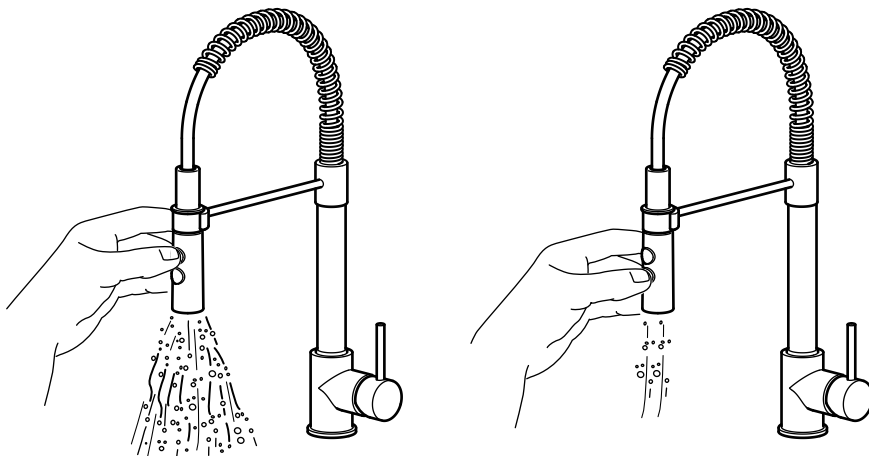


IMPORTANT! Do not tighten too hard: this can damage hoses/pipes and washers.





Before use: unscrew the hand spray and allow the water to run freely for 5 minutes. Then screw the hand spray back in place.



IMPORTANT

To comply with UK water regulations, this product shall be installed in accordance with the following:

Inlet supply hoses shall be installed where light is excluded.

- a) supplies shall be via a backflow prevention arrangement suitable for fluid category 5, or,
- b) so that it draws water by gravity from a cistern incorporating family 'A' backflow protection, by distributing pipes to which no fittings for other purposes are connected.

Check at regular intervals to make sure that the installation is not leaking.

