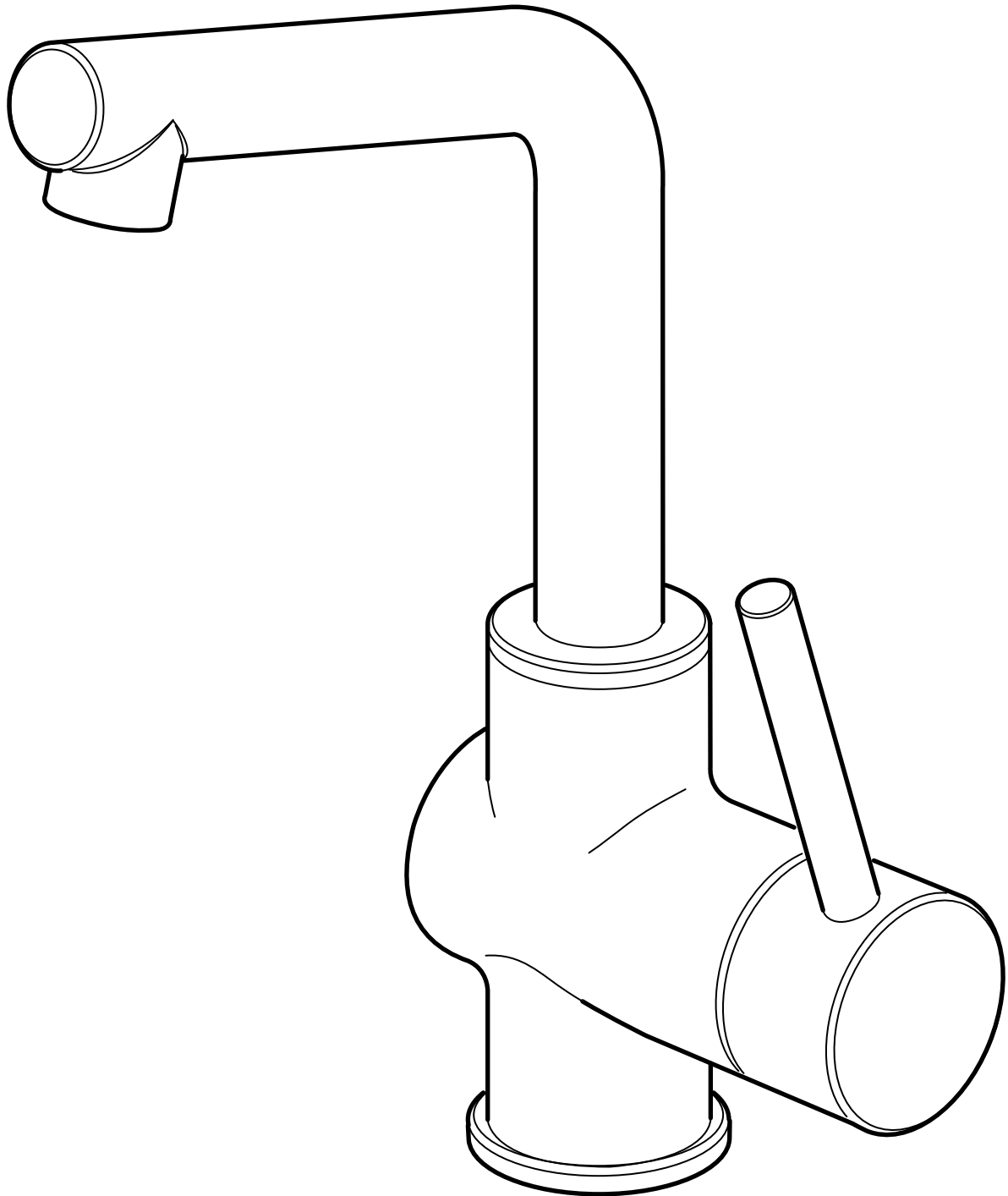


LUNDSKÄR



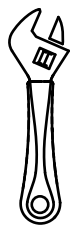
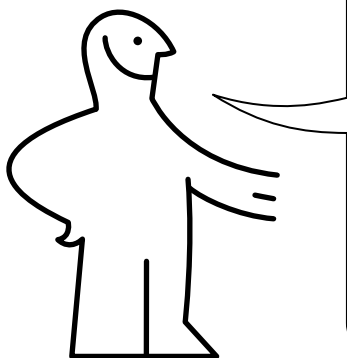
Design and Quality
IKEA of Sweden

**English**

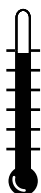
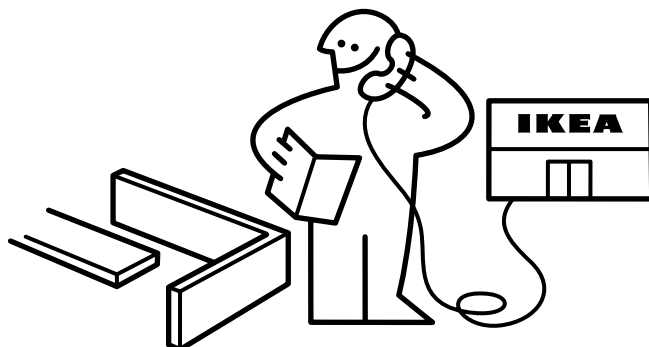
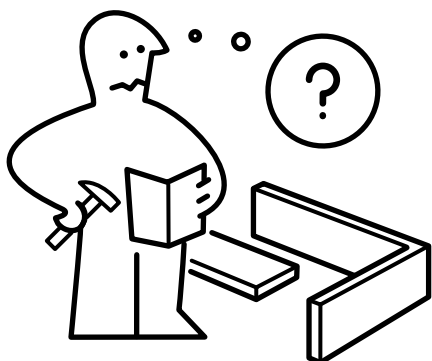
Installation must be performed in compliance with current local construction and plumbing regulations. If in doubt, contact a professional.

**English**

Switch off main shut-off valve before changing mixer tap.



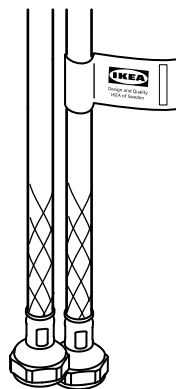
2x



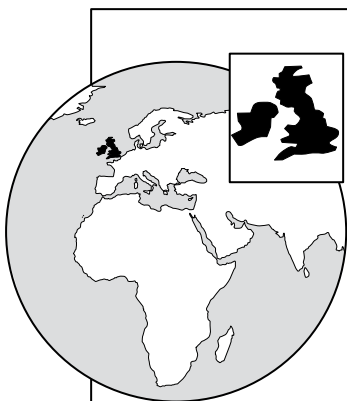
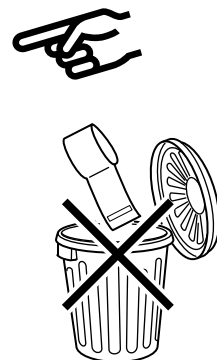
60°C ☺
140 F ☺
Max. 80°C
Max. 176°F



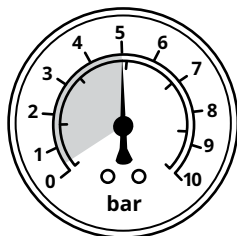
0,2 - 5 bar ☺
0,02 - 0,5 MPa ☺
2,9 - 72,5 psi ☺
0,1 - 10 bar
0,01 - 1 MPa
1,5 - 145 psi



G 1/2"



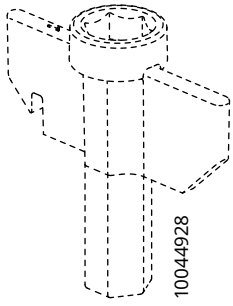
60°C ☺
140 F ☺
Max. 80°C
Max. 176°F



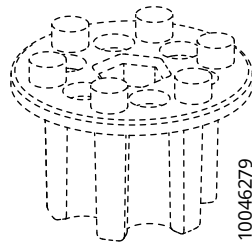
0,5 - 5 bar ☺
0,05 - 0,5 MPa ☺
7,2 - 72,5 psi ☺
0,2 - 10 bar
0,02 - 1 MPa
2,9 - 145 psi



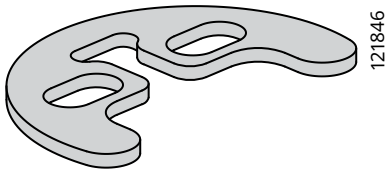
www.IKEA.com



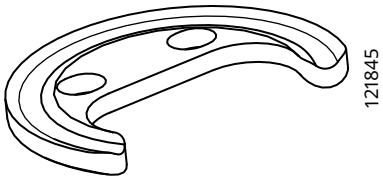
1x



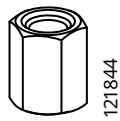
1x



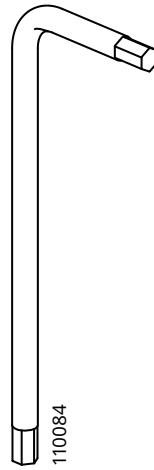
1x



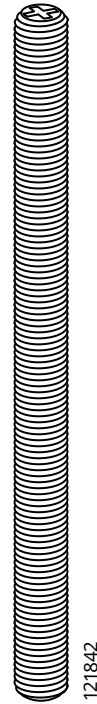
1x



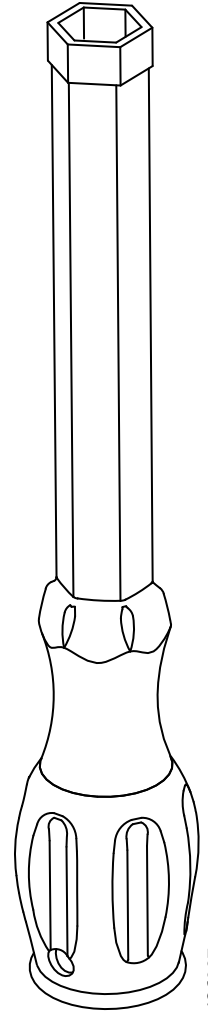
2x



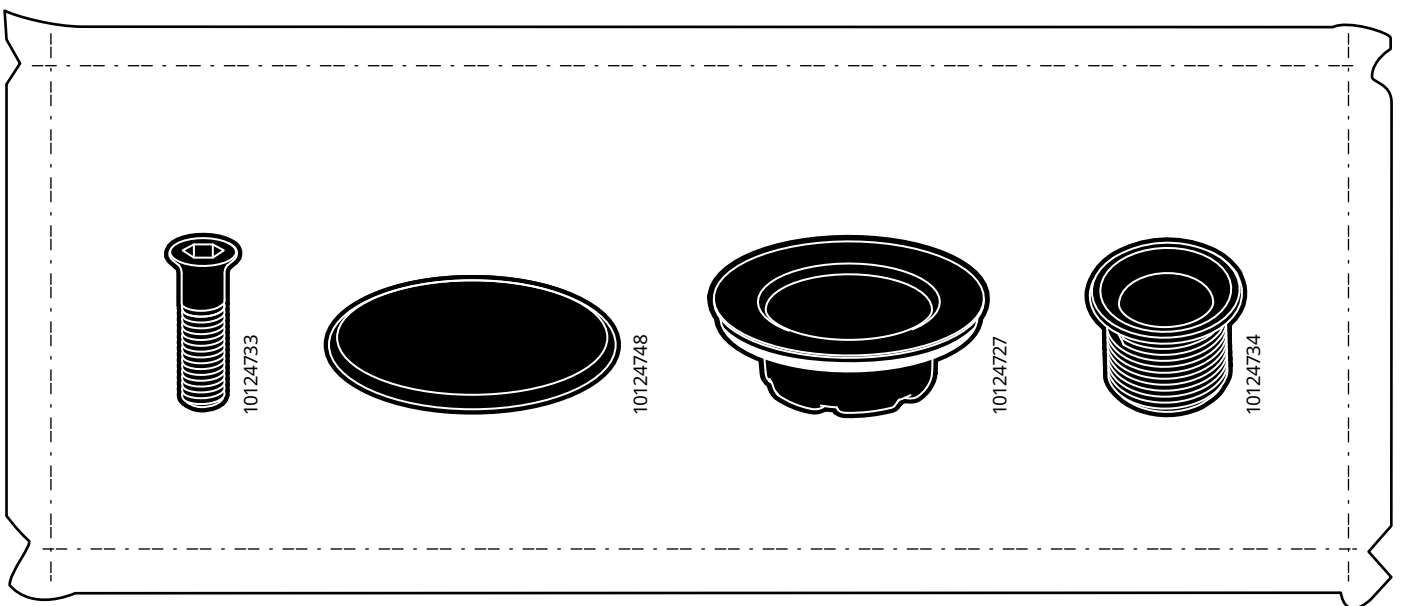
1x



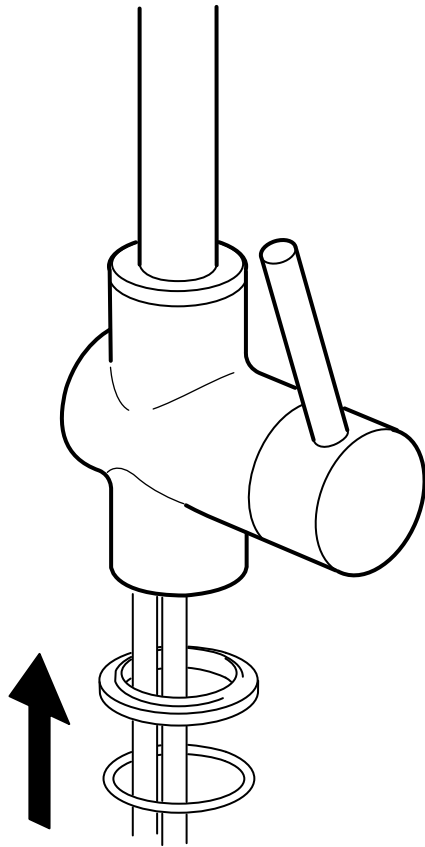
2x



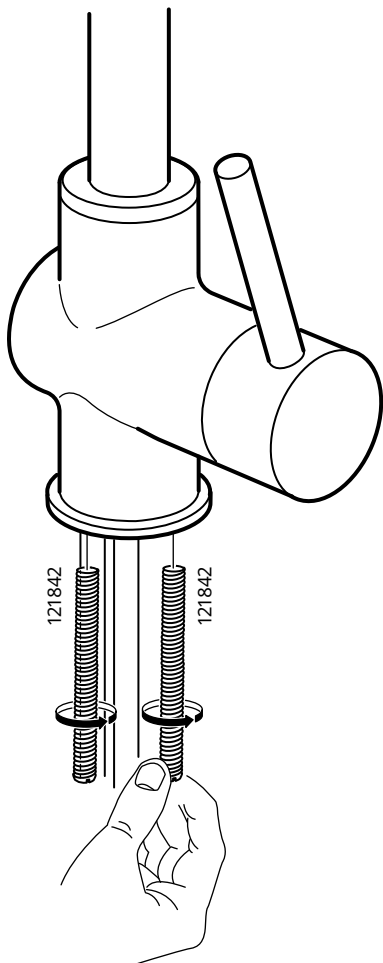
1x



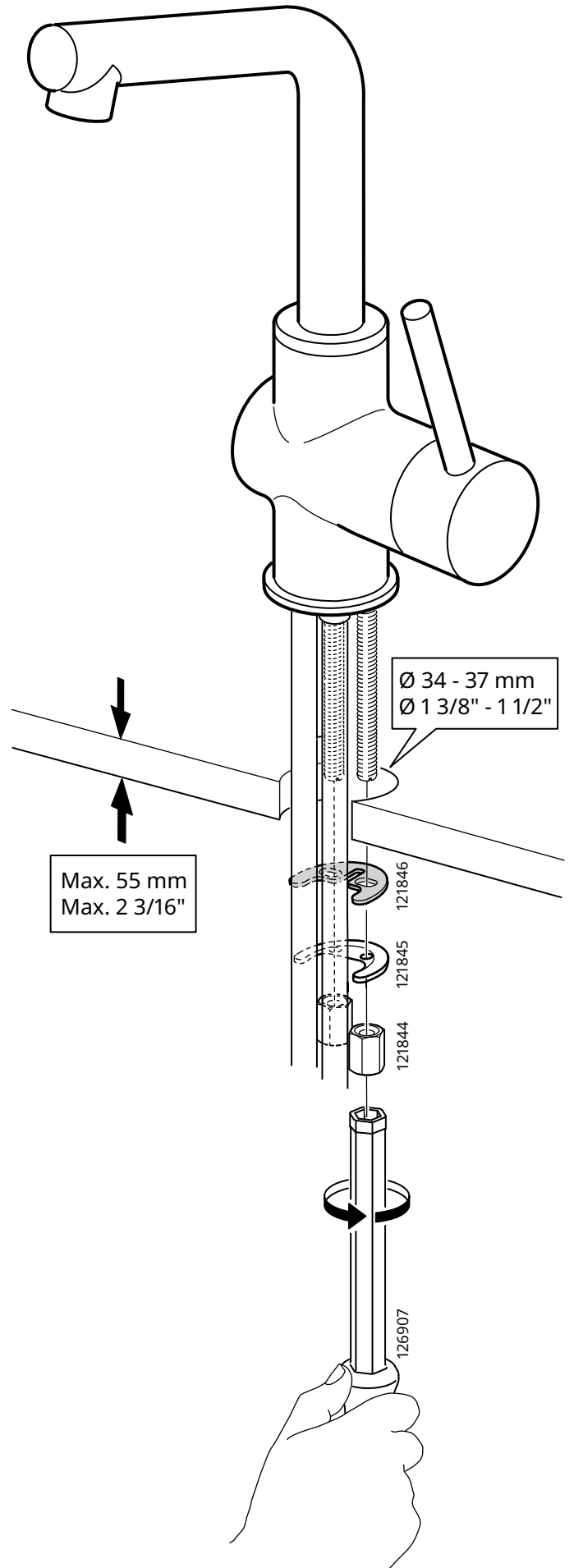
1



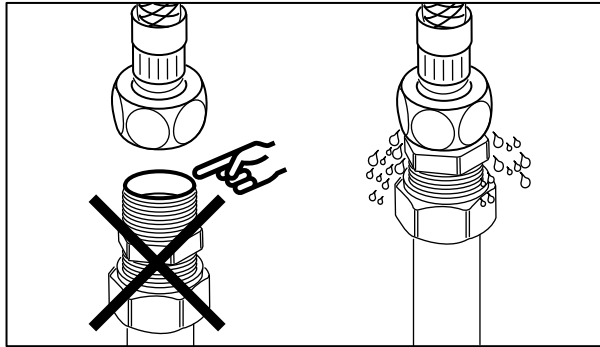
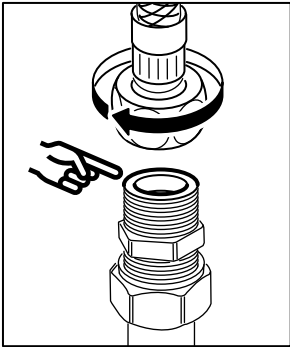
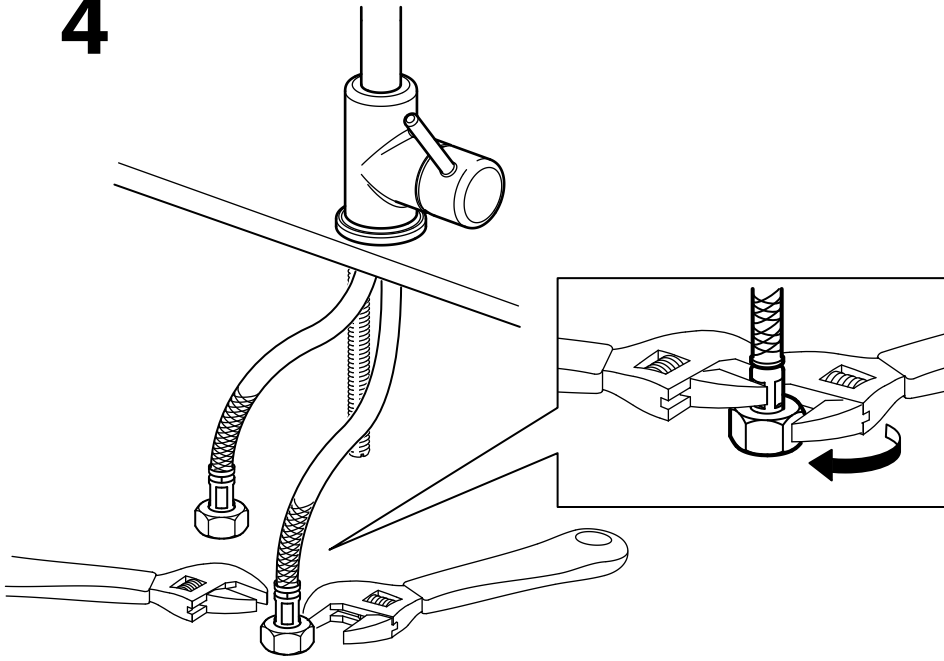
2



3

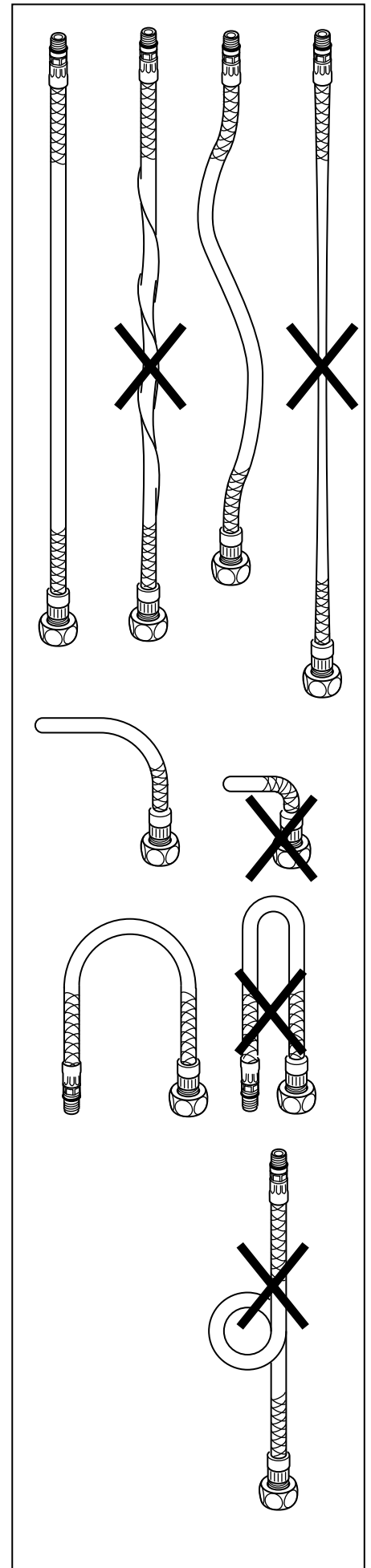


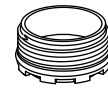
4



English

IMPORTANT! Do not tighten too hard: this can damage hoses/pipes and washers.

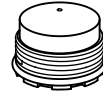
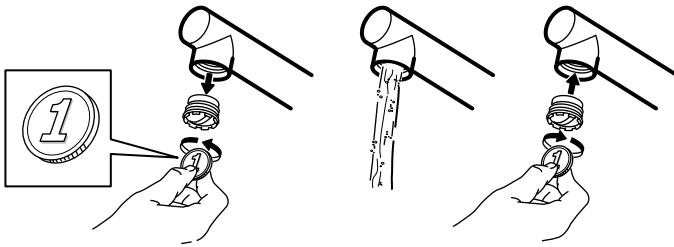




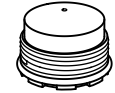
10004080
Pre-fitted
Low pressure



124607
High pressure



124607
Pre-fitted
High pressure



139268
Low pressure

English

Before use: Unscrew the Aerator/Flow Guide with a coin and allow the water to run freely for a few minutes. Then screw the Aerator/Flow Guide back in place up to the stop DO NOT OVER TIGHTEN.



English

Check at regular intervals to make sure that the installation is not leaking.



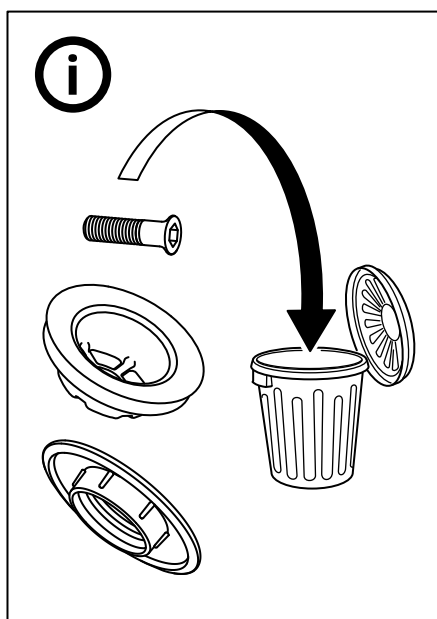
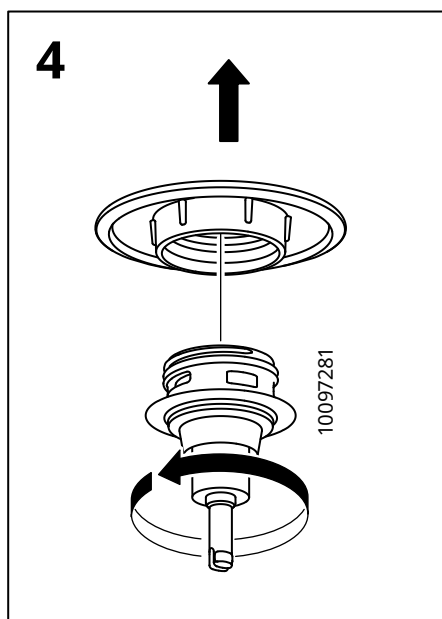
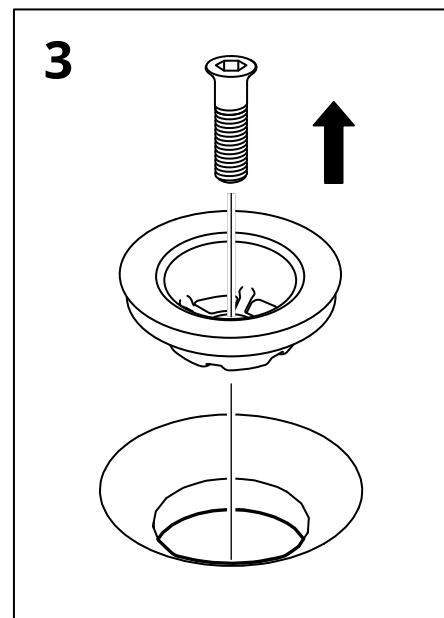
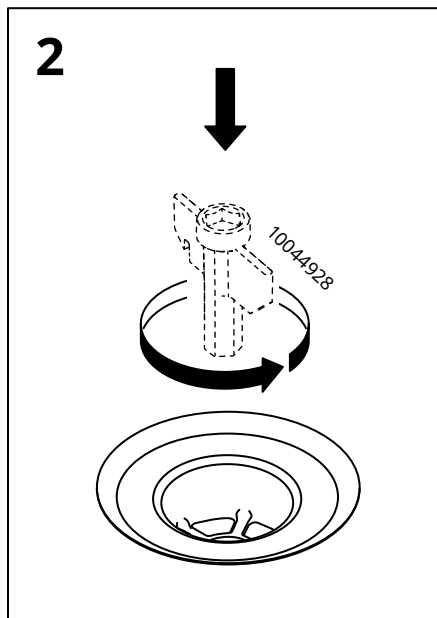
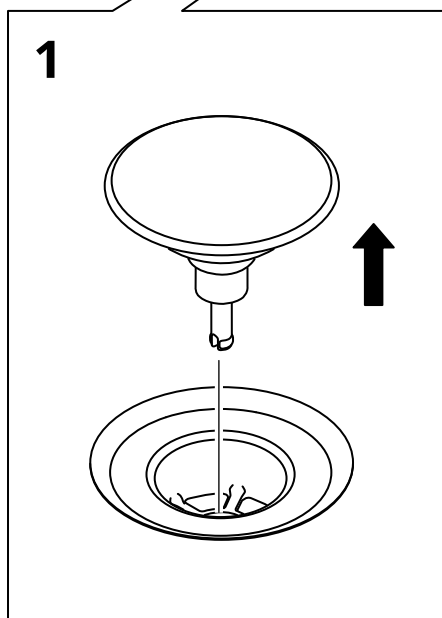
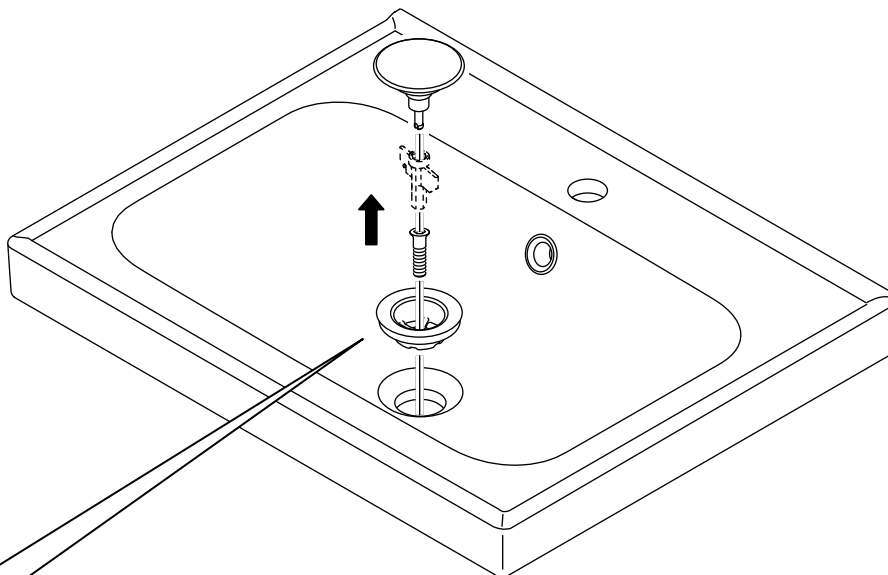
English

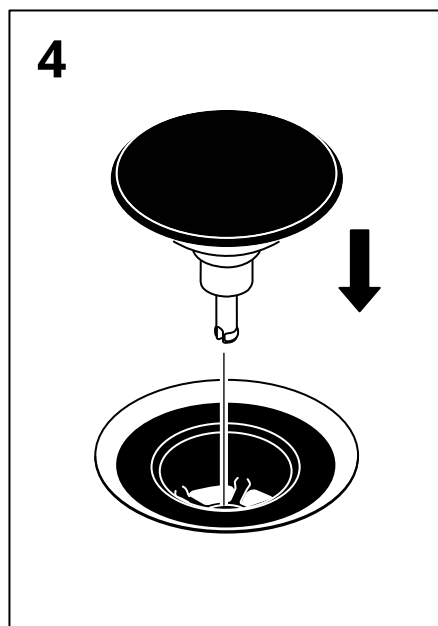
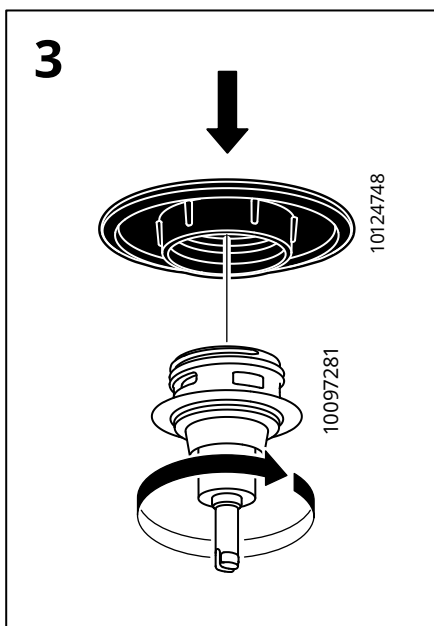
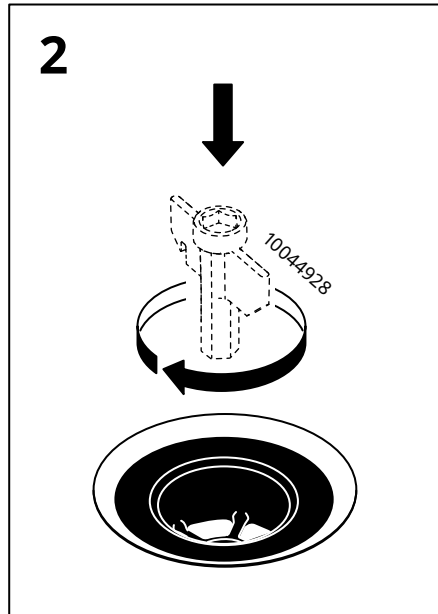
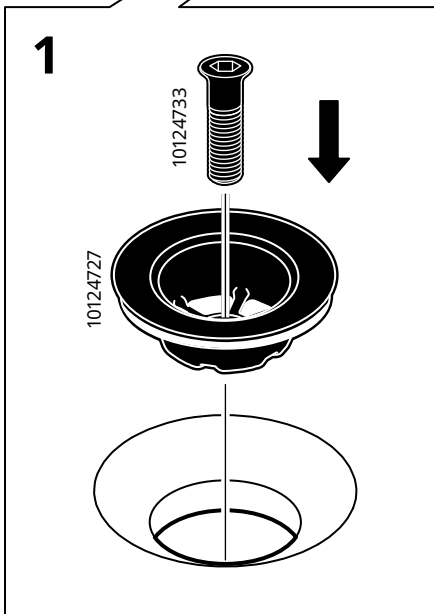
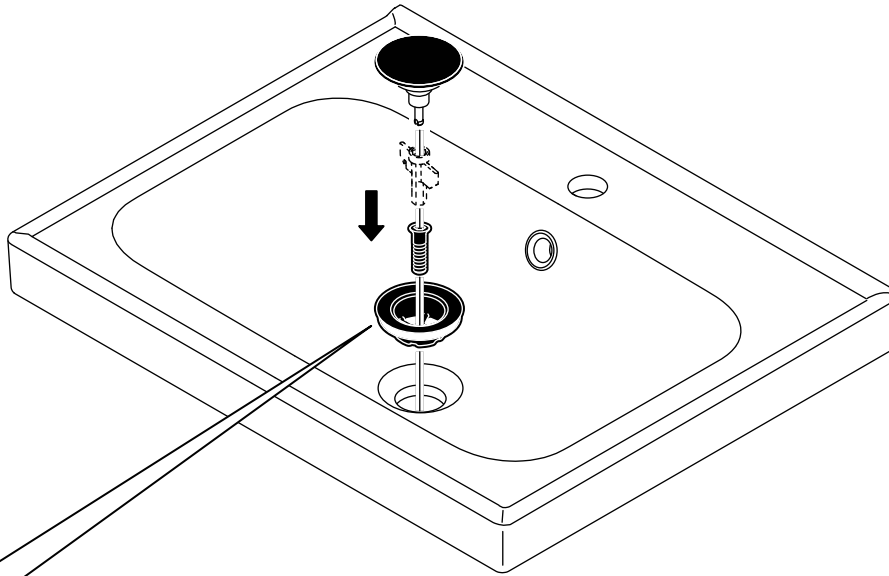
IMPORTANT

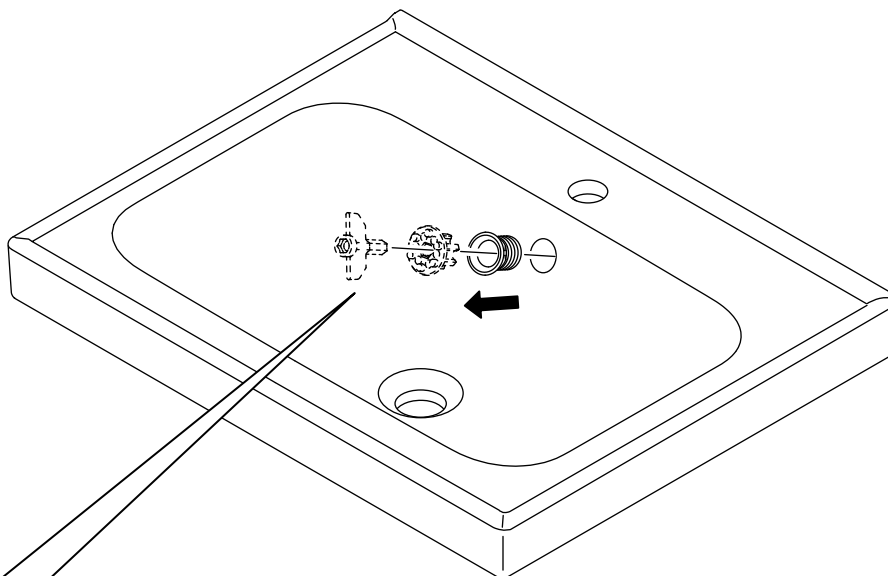
To comply with UK water regulations, this product shall be installed in accordance with the following:

Inlet supply hoses shall be installed where light is excluded.

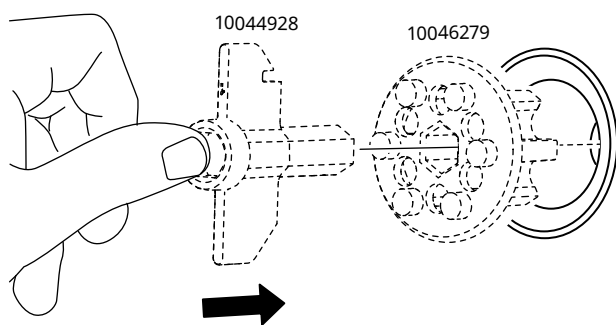
Water supplies shall be at reasonably balanced pressures from a common source (e.g. hot and cold supplies both from the same storage or both from a supply pipe). Where the fitting is supplied from unbalanced supplies (e.g. hot and cold supplies from separate sources) an 'Approved' single check valve or some other no less effective backflow prevention device shall be fitted immediately upstream of both hot and cold water inlets.



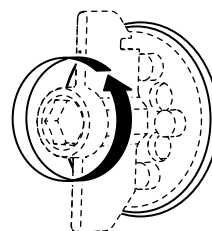




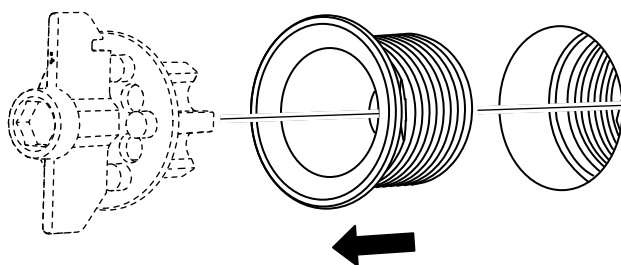
1



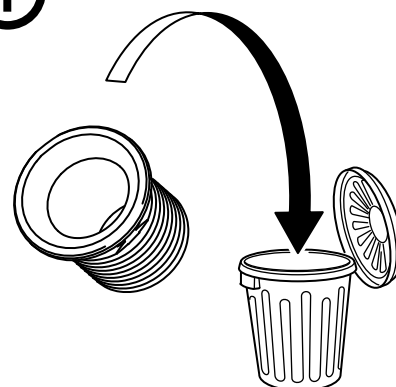
2

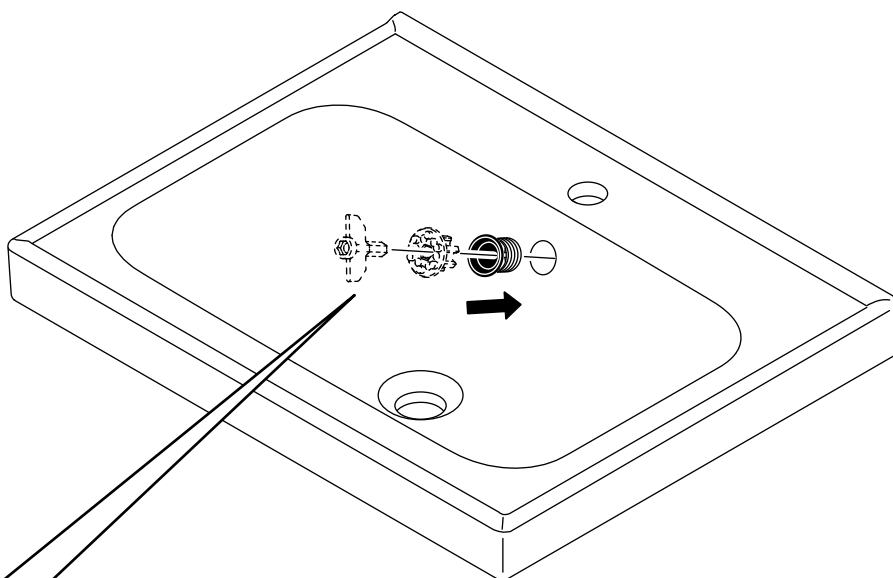


3

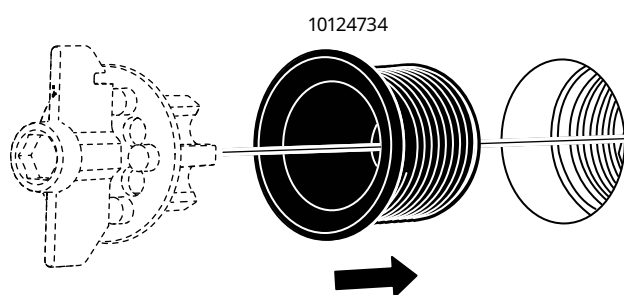


i

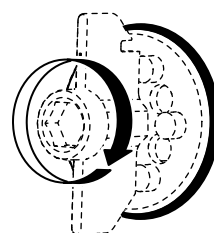




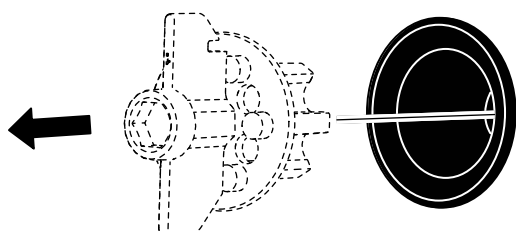
1



2



3

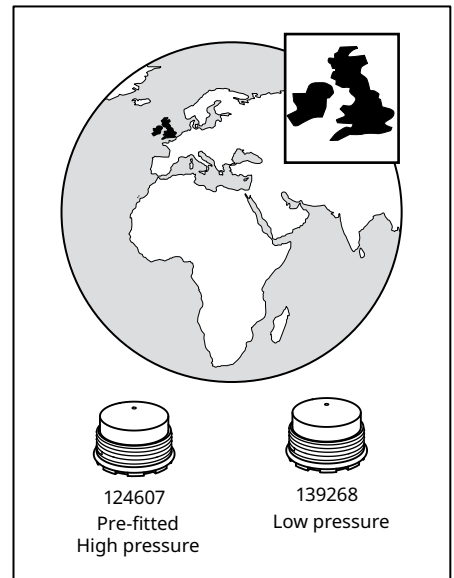




10004080
Pre-fitted
Low pressure

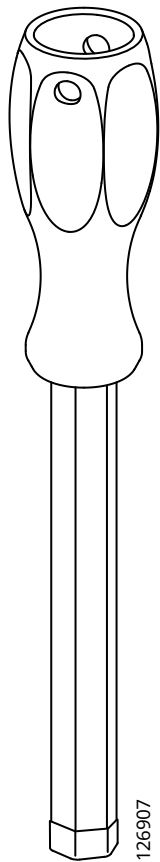
124607
High pressure

118875

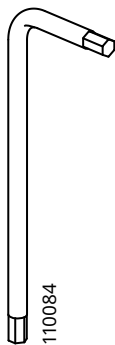


124607
Pre-fitted
High pressure

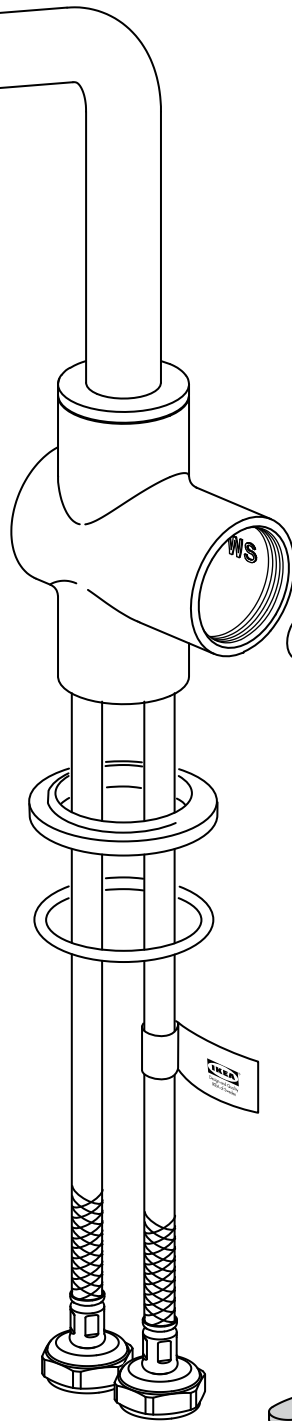
139268
Low pressure



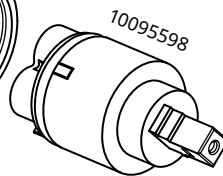
126907



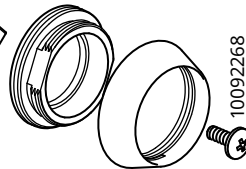
110084



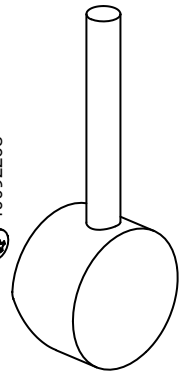
G 1/2"



10095598



10092268



190555

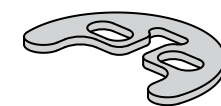
10091190



121842



121846



121846



121845



121844



10124734



10124748



10124733



10124727

