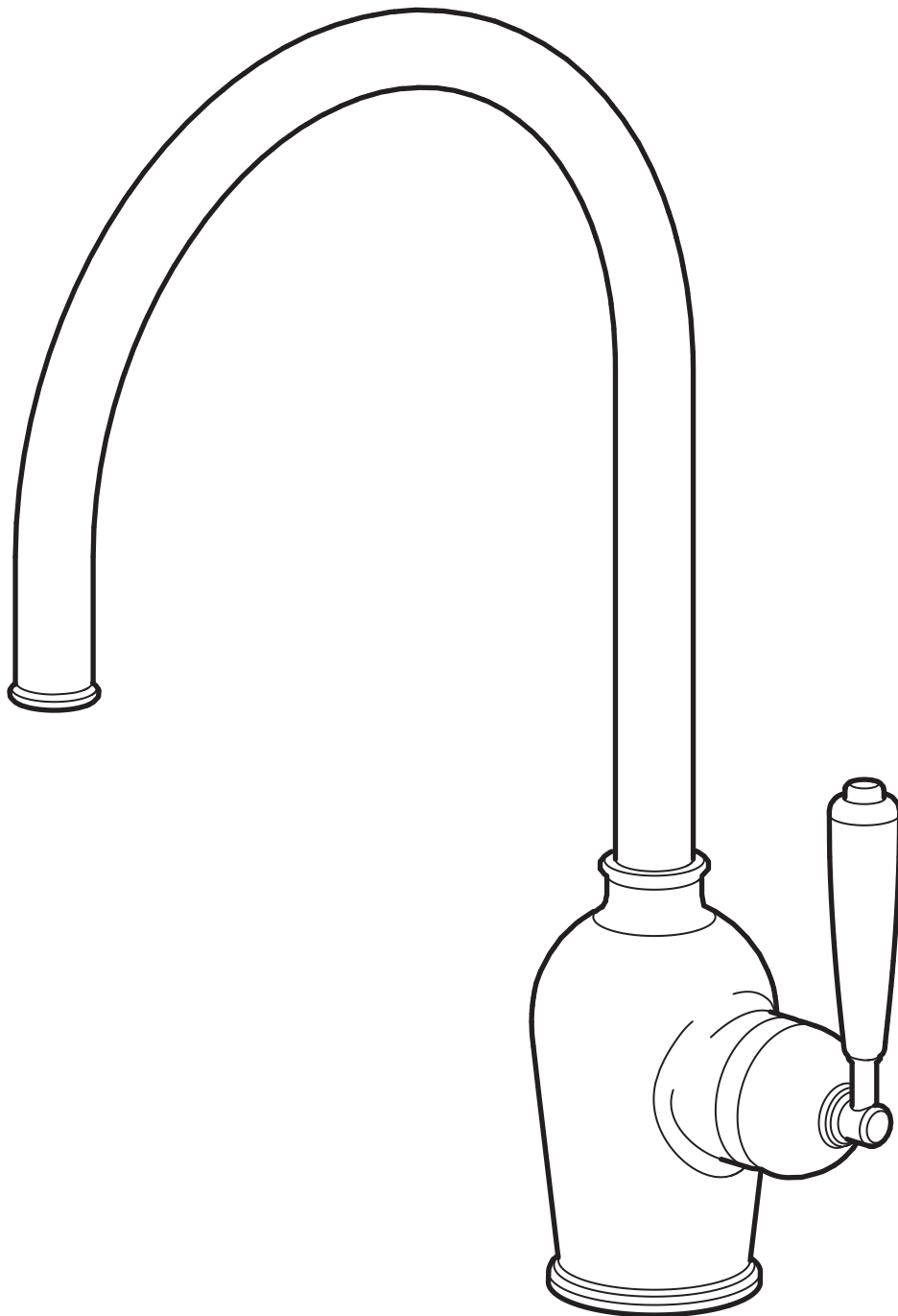


# INSJÖN



Design and Quality  
IKEA of Sweden



### English

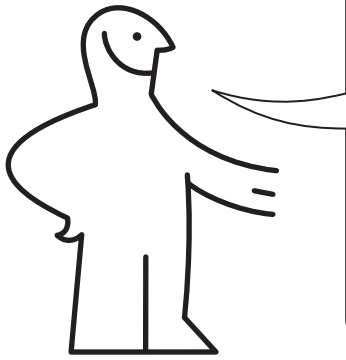
Installation must be performed in compliance with current local construction and plumbing regulations. If in doubt, contact a professional.

---

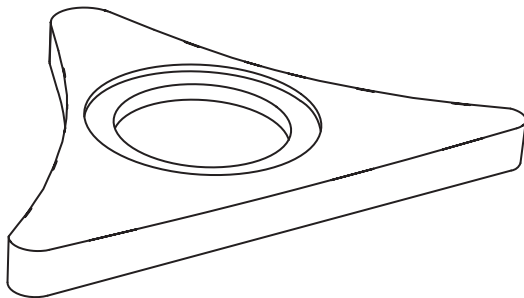
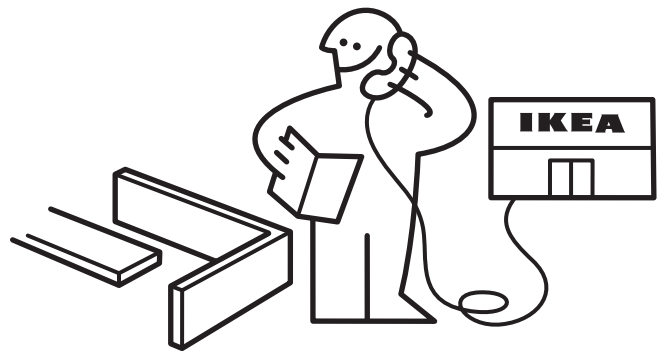
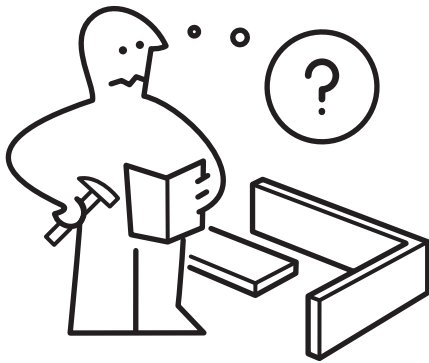


### English

Switch off main shut-off valve before changing mixer tap.



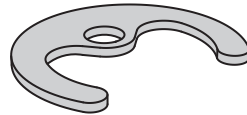
2x



120087



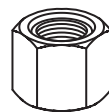
120143



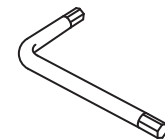
120142



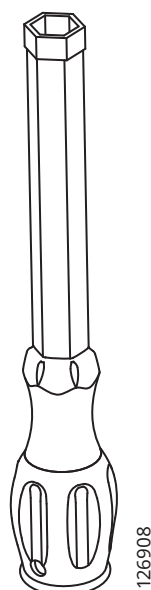
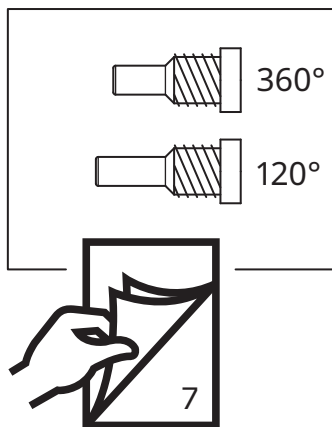
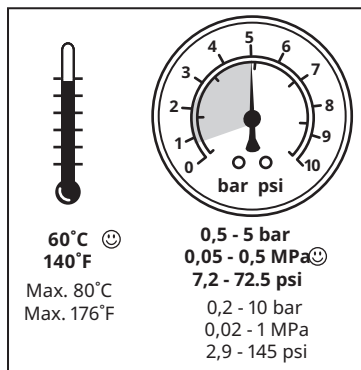
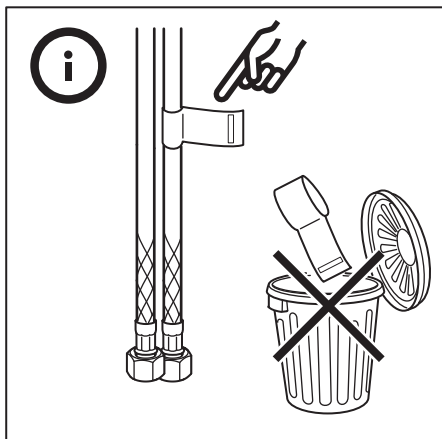
120141



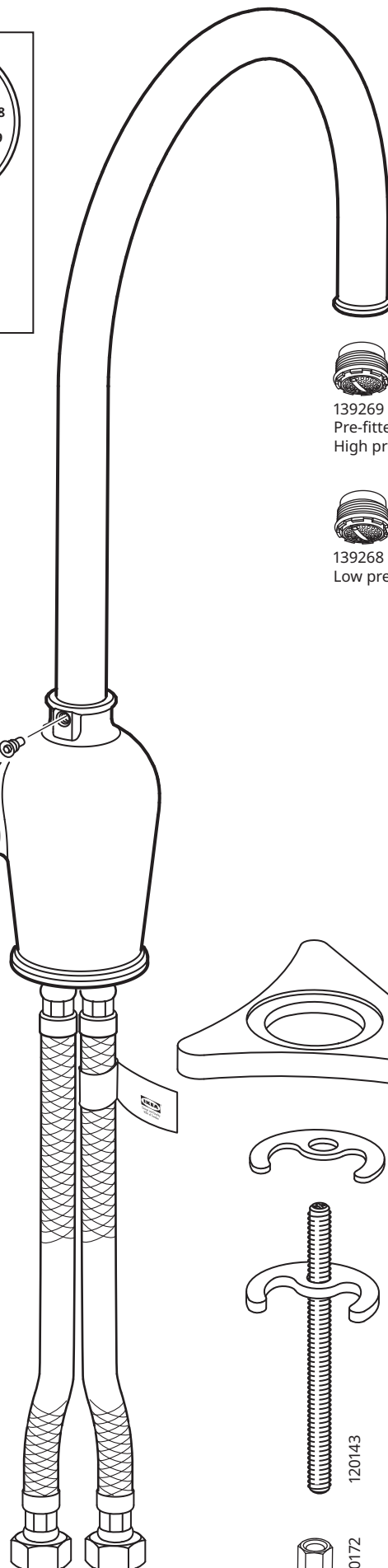
120172



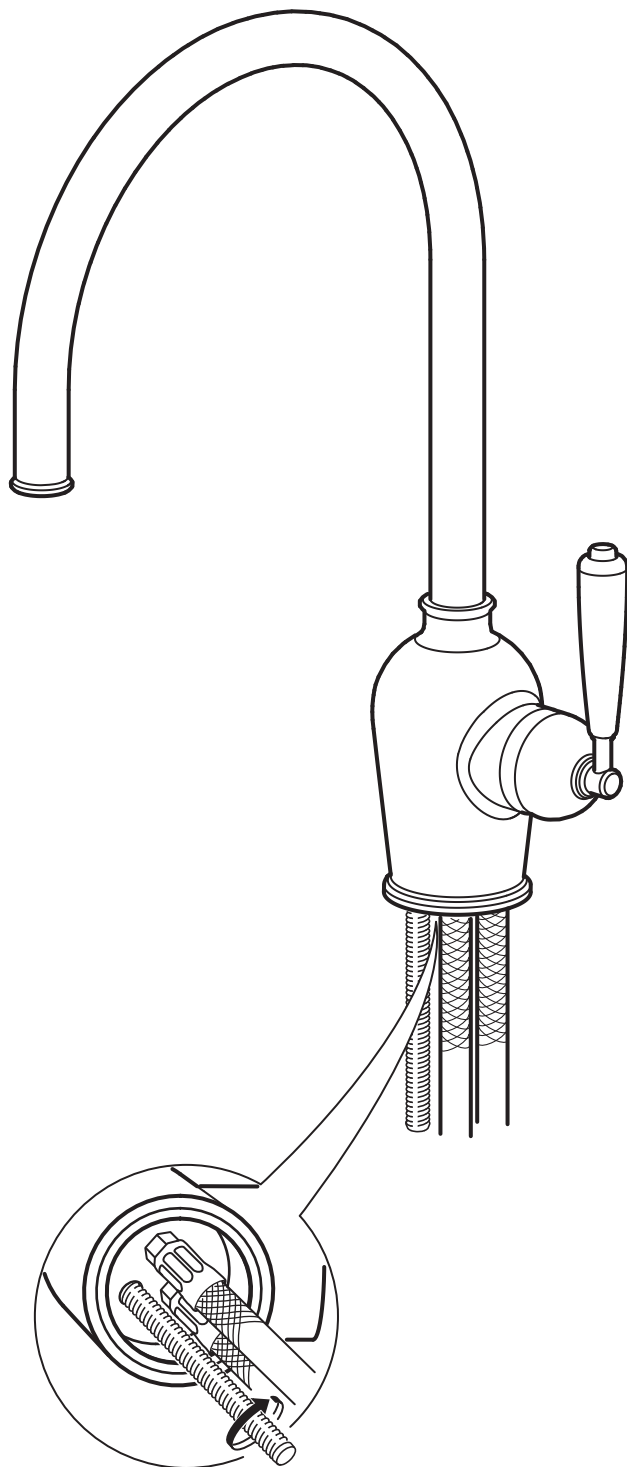
110084



G1/2



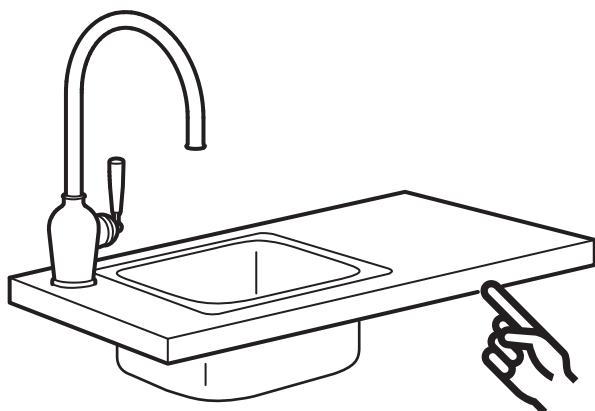
# 1



## English

Seal the open surfaces with silicone to prevent water from penetrating the worktop upon any leaks. Silicone is not included.

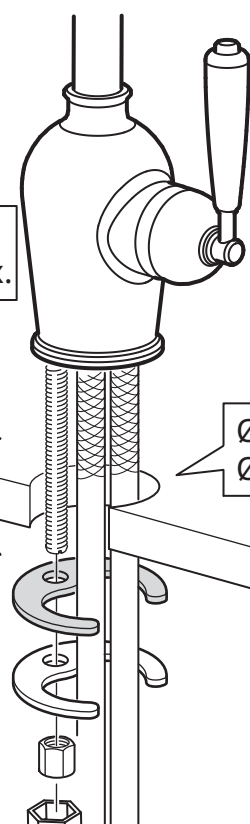
2



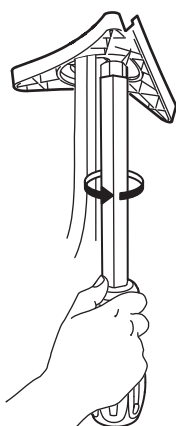
55 Max.  
2 3/16" Max.



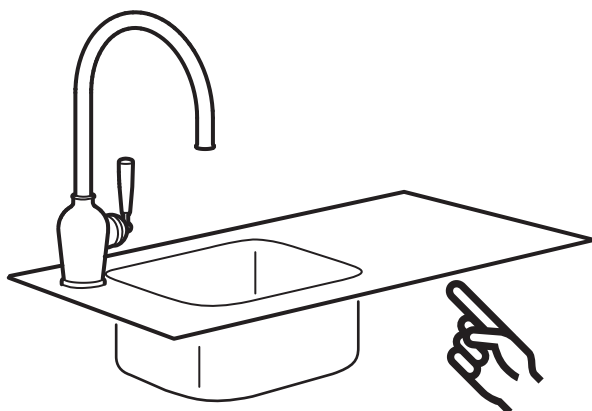
Ø 34 - 37 mm  
Ø 1 3/8 - 1 1/2"



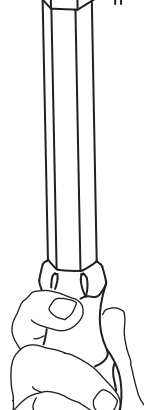
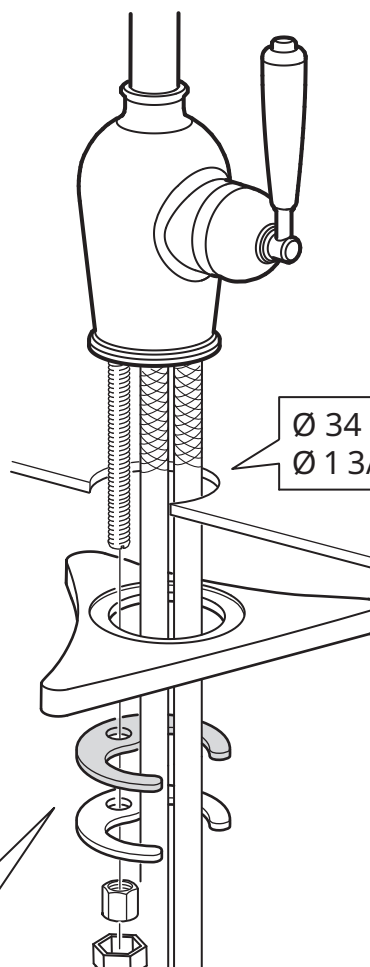
126908

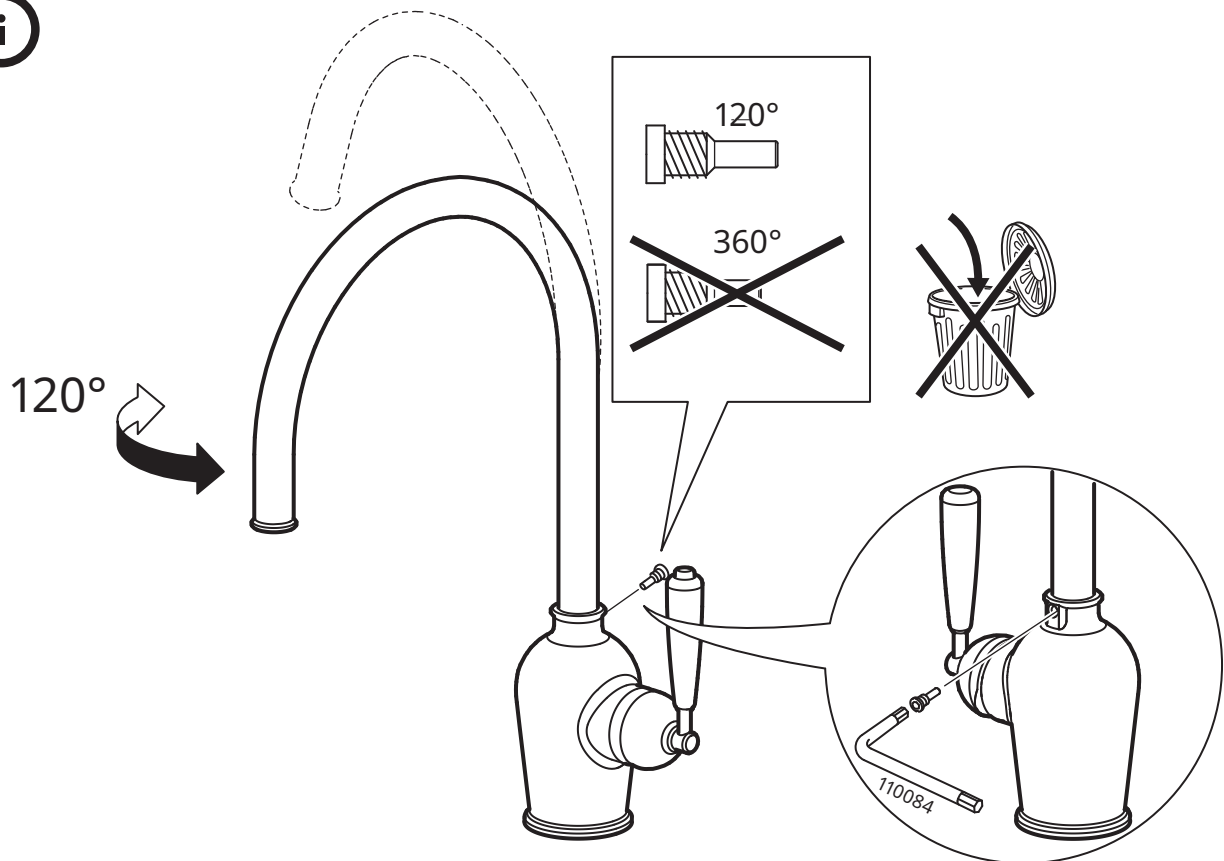
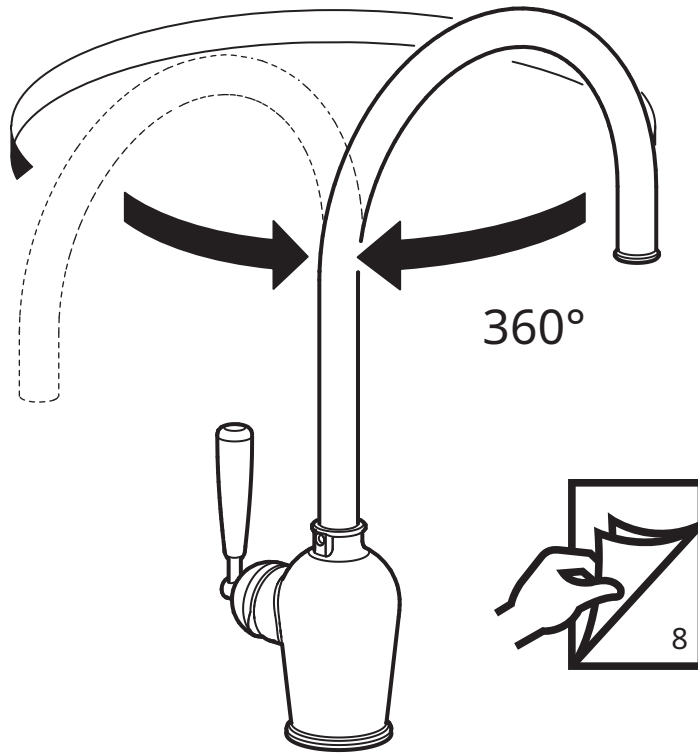


2

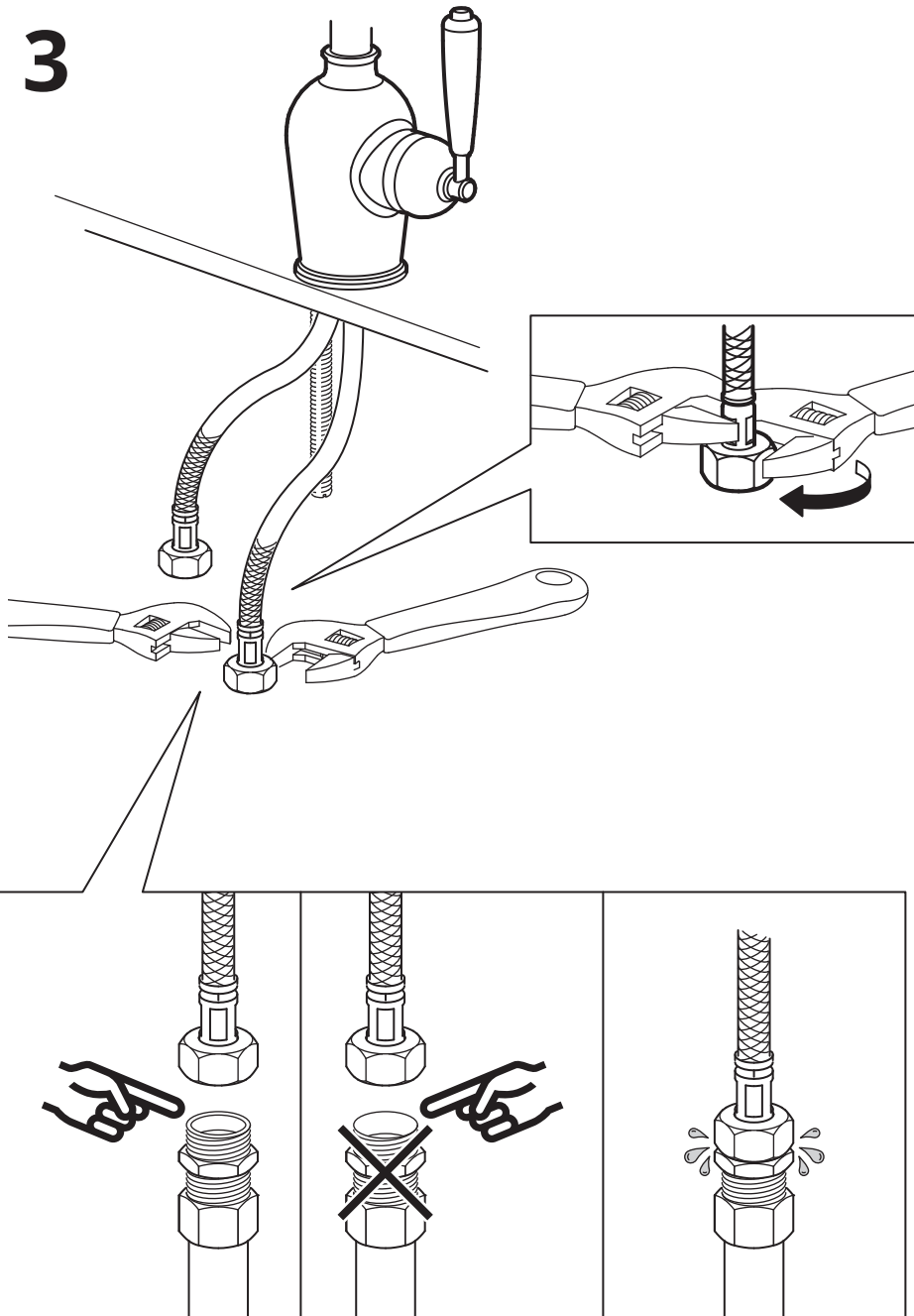


Ø 34 - 37 mm  
Ø 1 3/8 - 1 1/2"



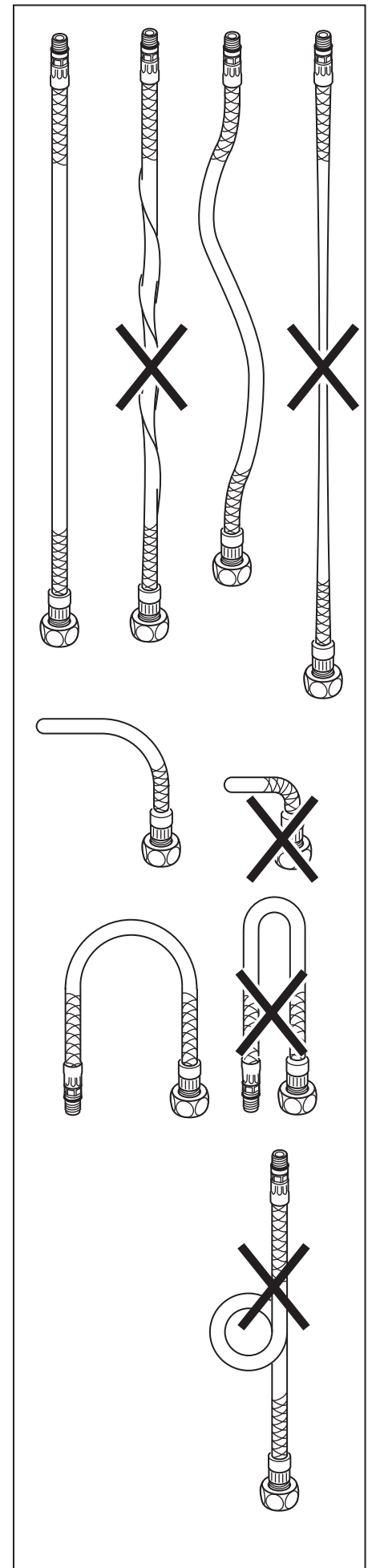


# 3

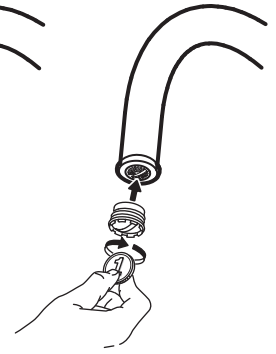
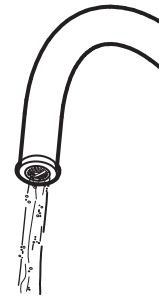
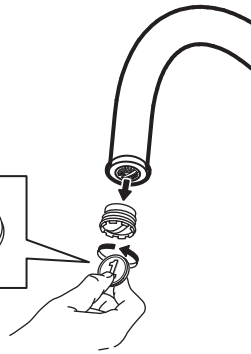
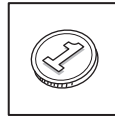
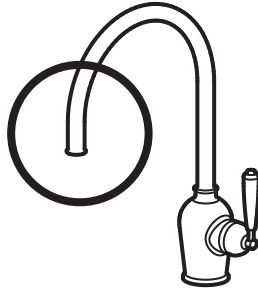


## English

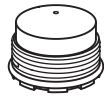
IMPORTANT! Do not tighten too hard: this can damage hoses/pipes and washers.







139269  
Pre-fitted  
High pressure



139268  
Low pressure

### English

Before use: Unscrew the Aerator/Flow Guide with a coin and allow the water to run freely for a few minutes. Then screw the Aerator/Flow Guide back in place up to the stop DO NOT OVER TIGHTEN.



### English

Check at regular intervals to make sure that the installation is not leaking.



### English

To comply with UK water regulations, this product shall be installed in accordance with the following:

Inlet supply hoses shall be installed where light is excluded.

Water supplies shall be at reasonably balanced pressures from a common source (e.g. hot and cold supplies both from the same storage or both from a supply pipe). Where the fitting is supplied from unbalanced supplies (e.g. hot and cold supplies from separate sources) an 'Approved' single check valve or some other no less effective backflow prevention device shall be fitted immediately upstream of both hot and cold water inlets.





