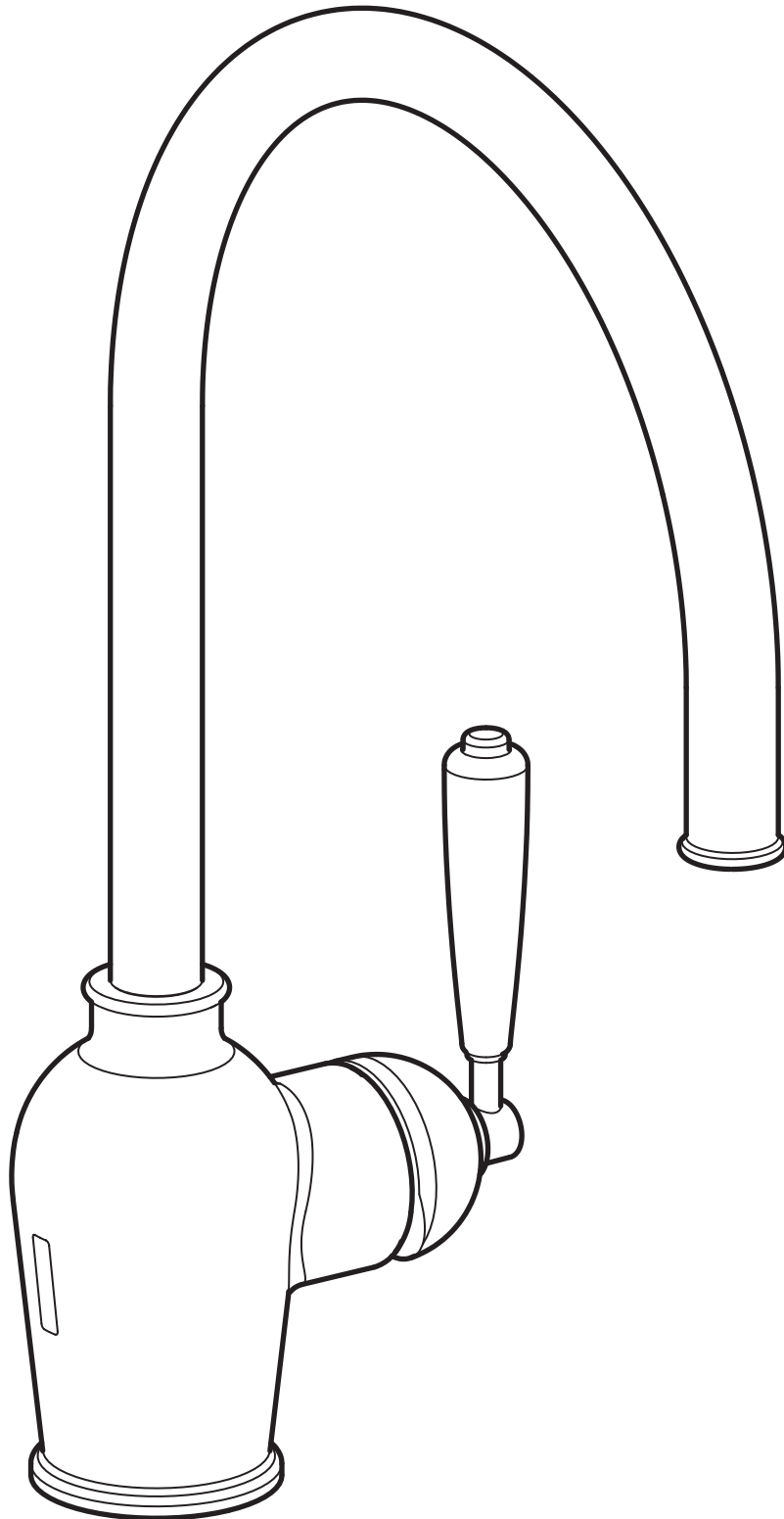


# INSJÖN



Design and Quality  
IKEA of Sweden



### English

Installation must be performed in compliance with current local construction and plumbing regulations. If in doubt, contact a professional.

---

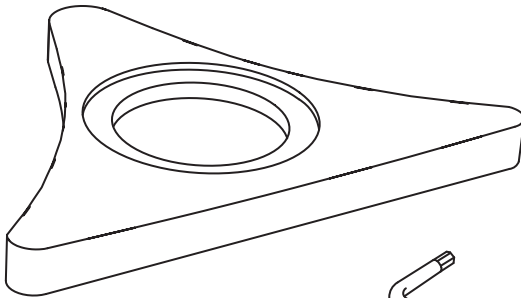
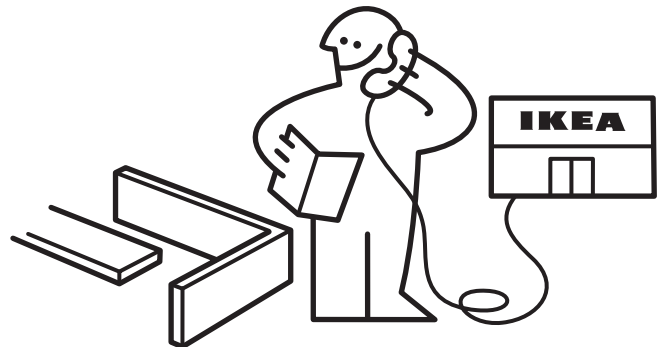
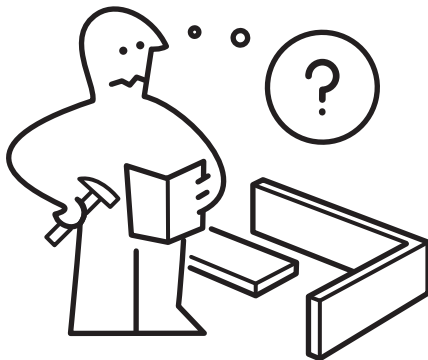


### English

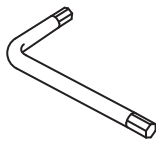
Switch off main shut-off valve before changing mixer tap.



2x



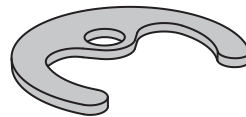
120087



110084



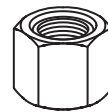
120143



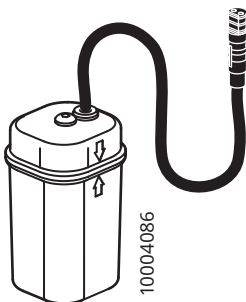
120142



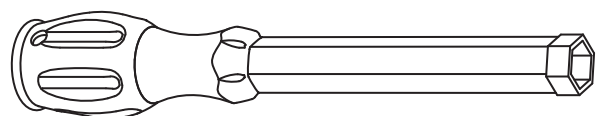
120141



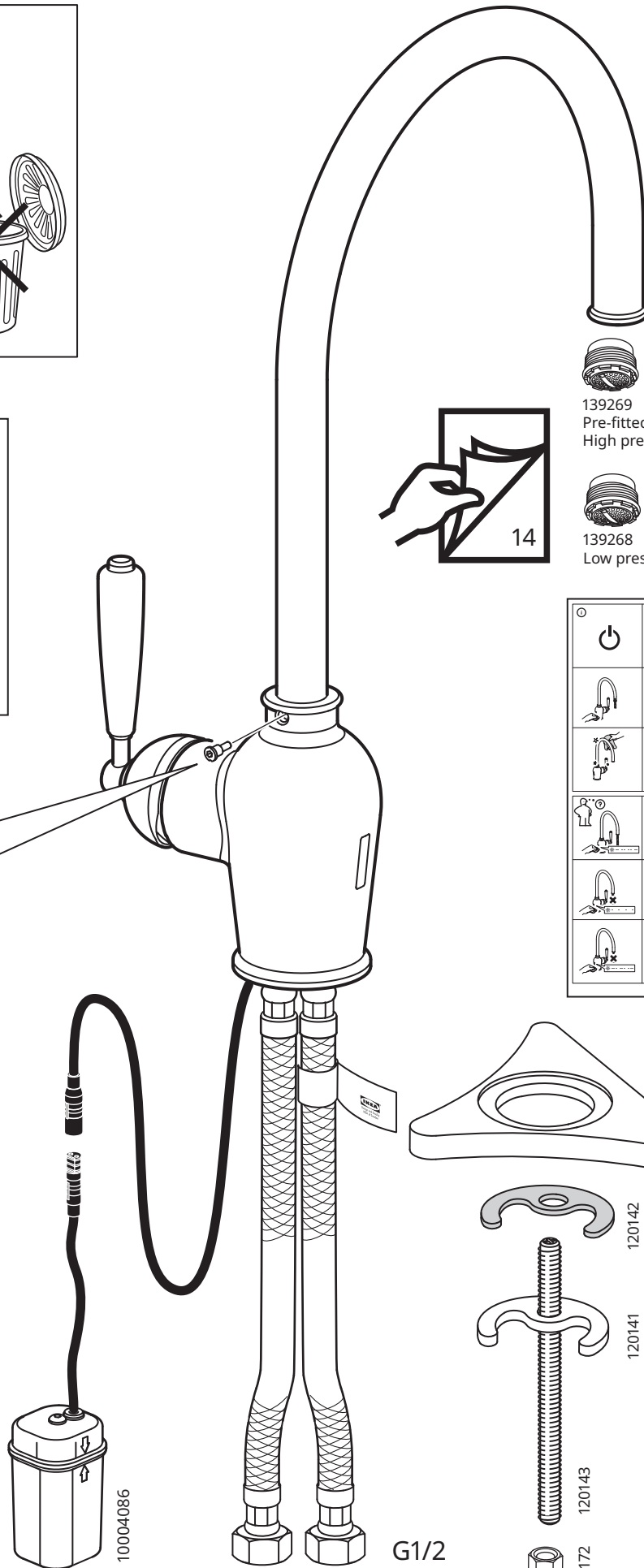
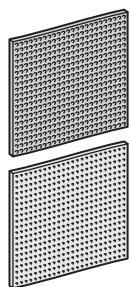
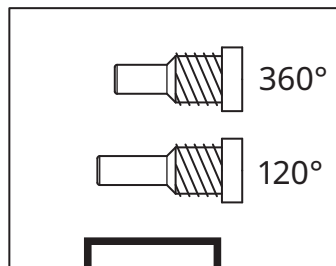
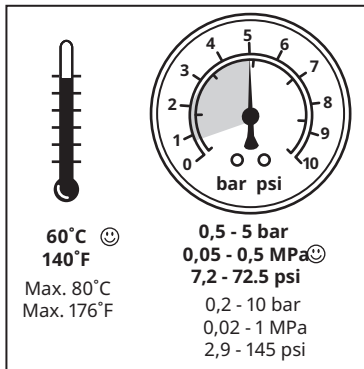
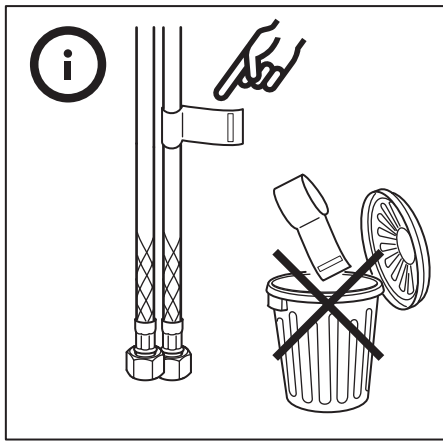
120172



10004086



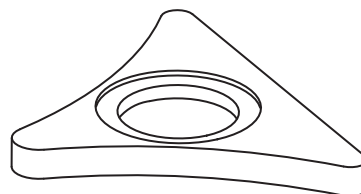
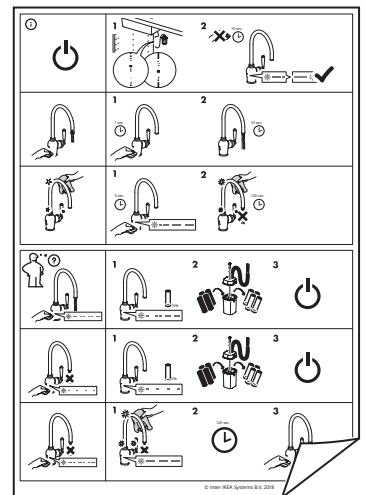
126908



139269  
Pre-fitted  
High pressure



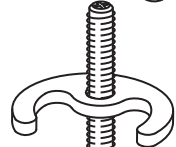
139268  
Low pressure



120087



120142



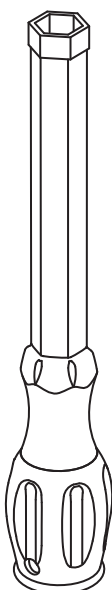
120141



120143



120172

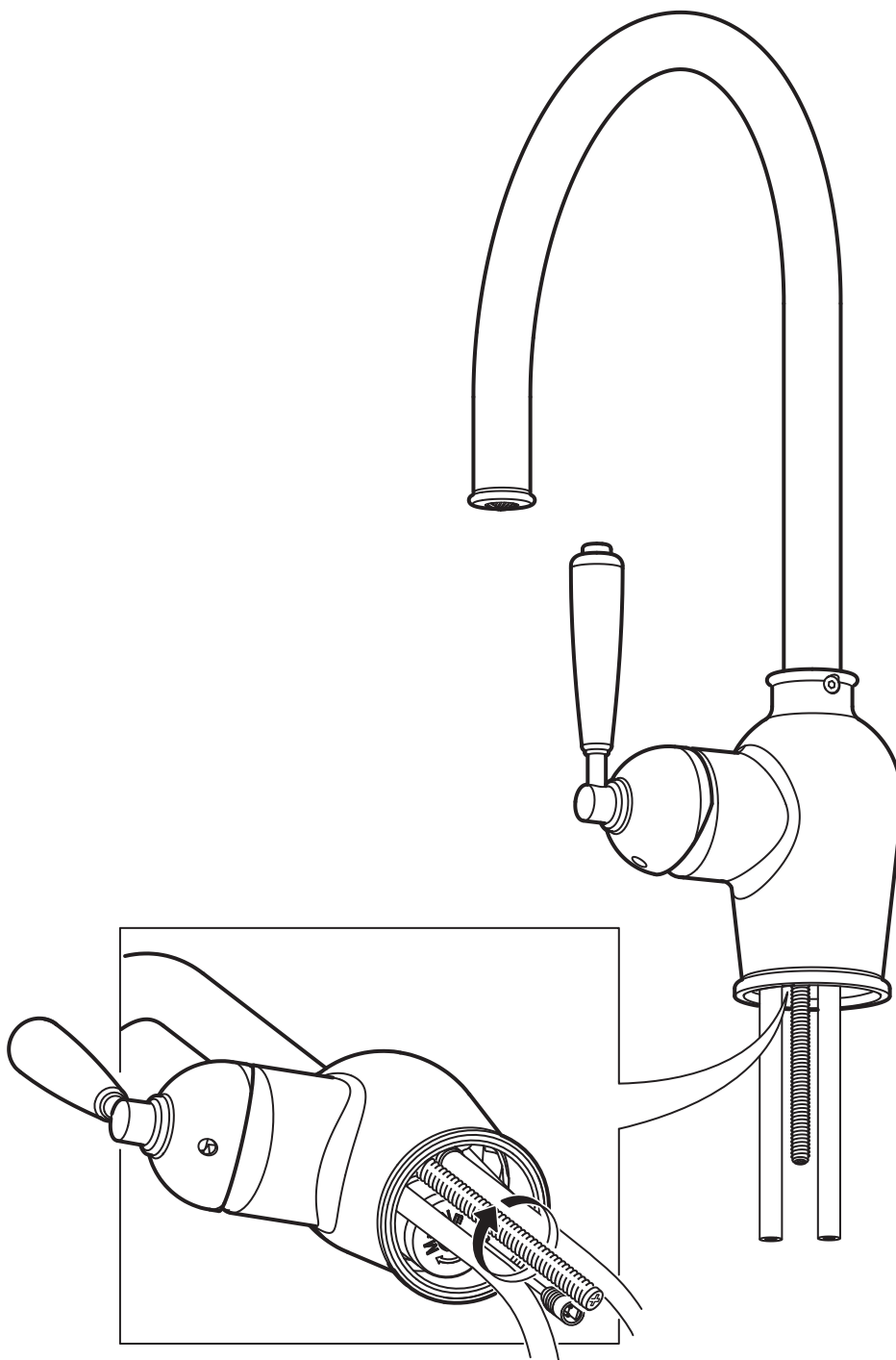


126908

G1/2

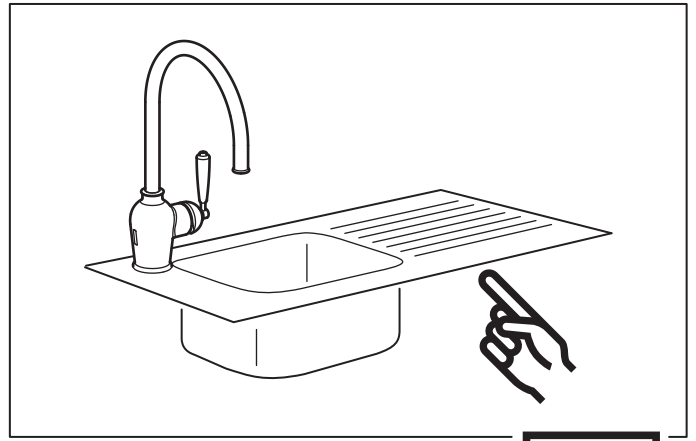
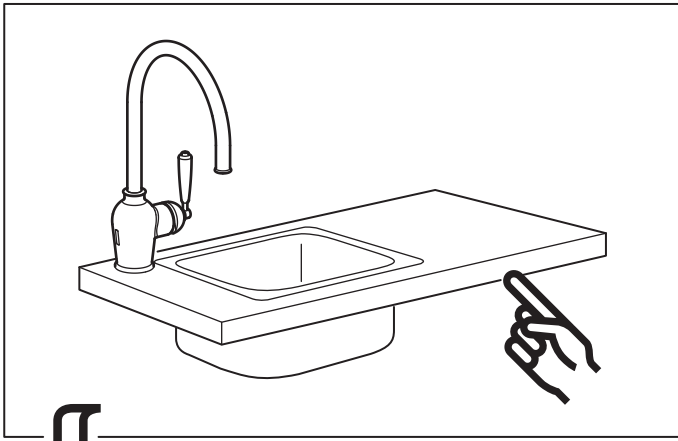
10004086

# 1

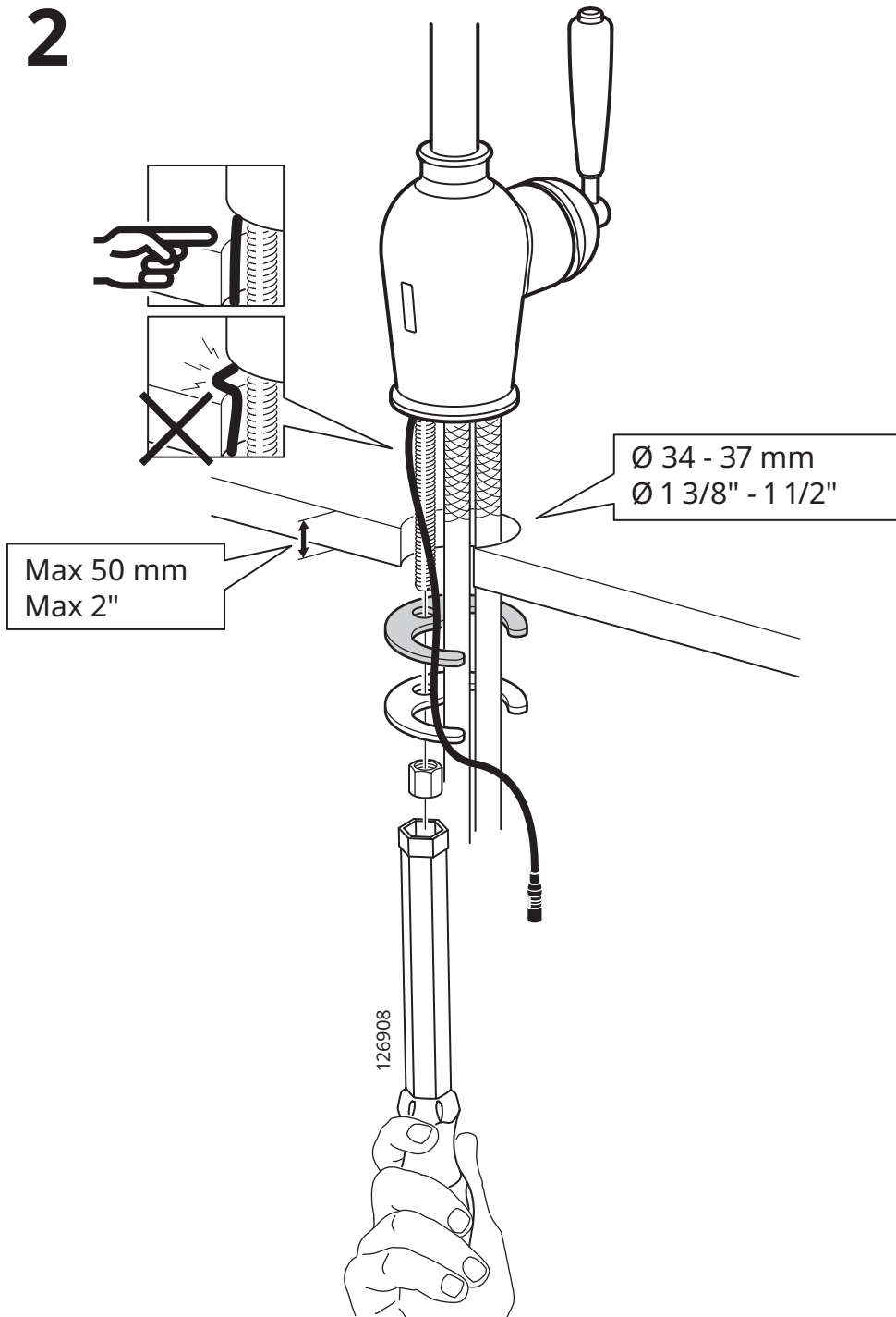


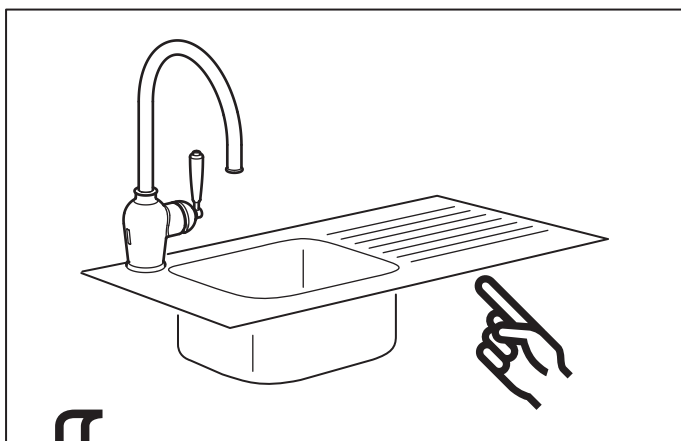
## English

Seal the open surfaces with silicone to prevent water from penetrating the worktop upon any leaks. Silicone is not included.

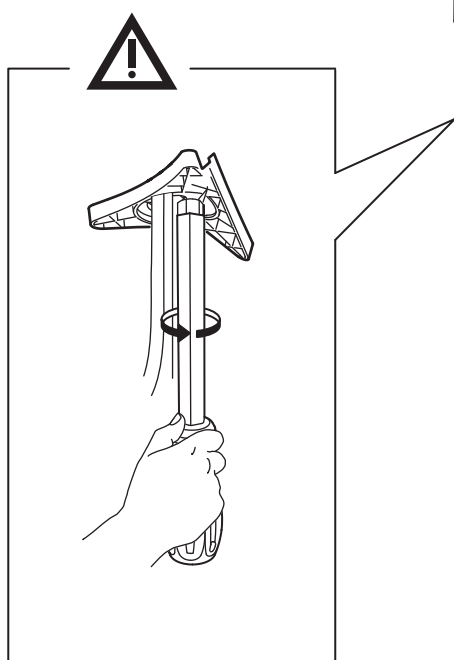
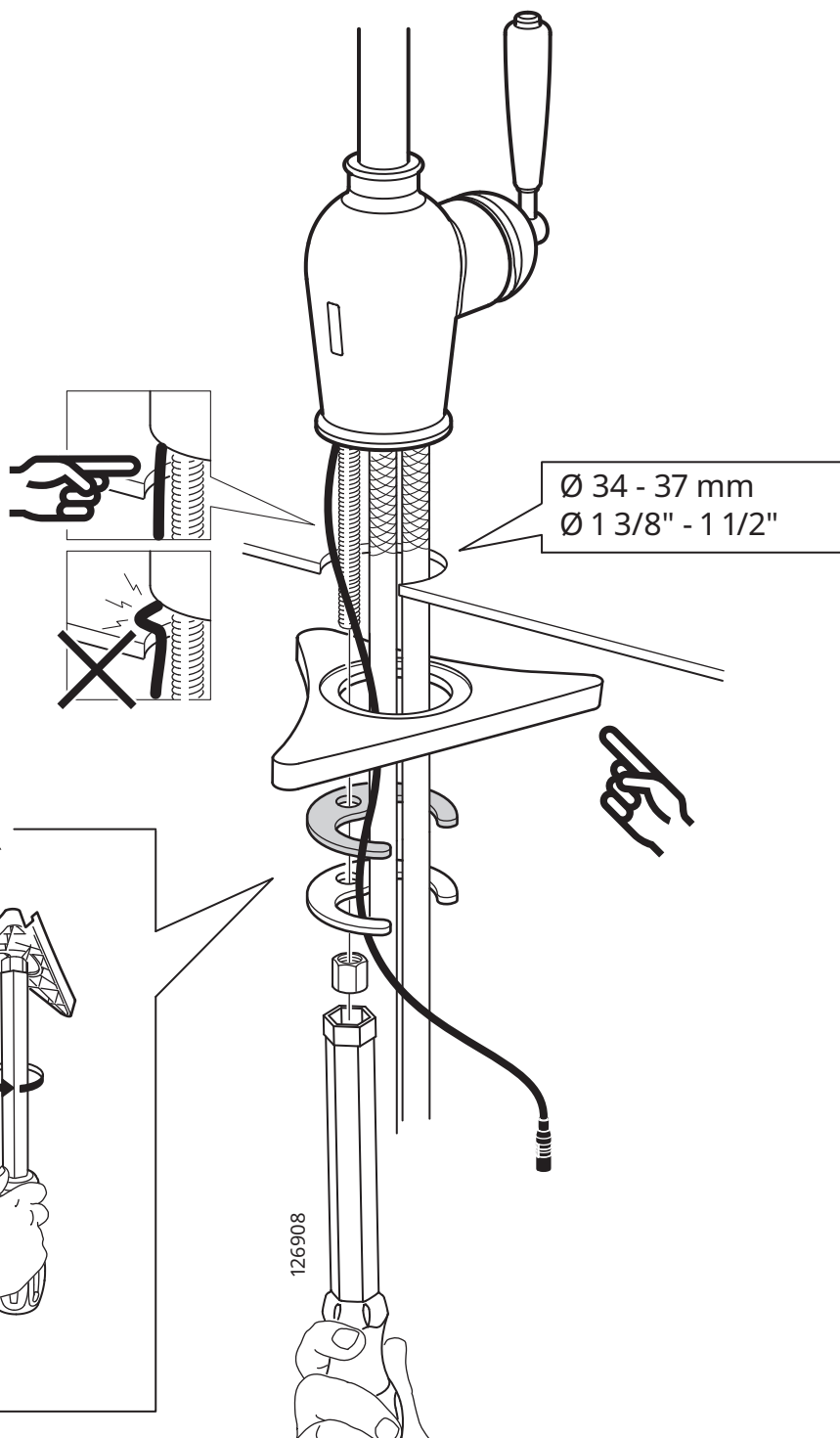


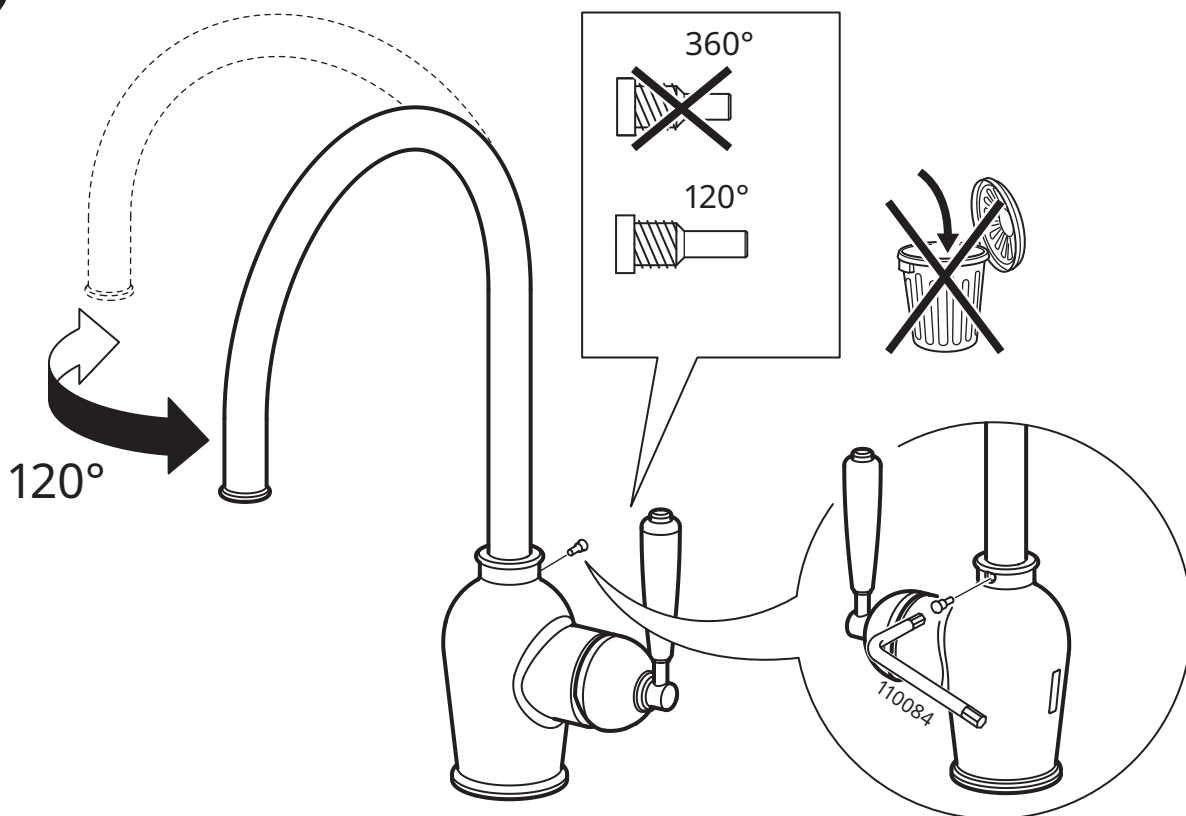
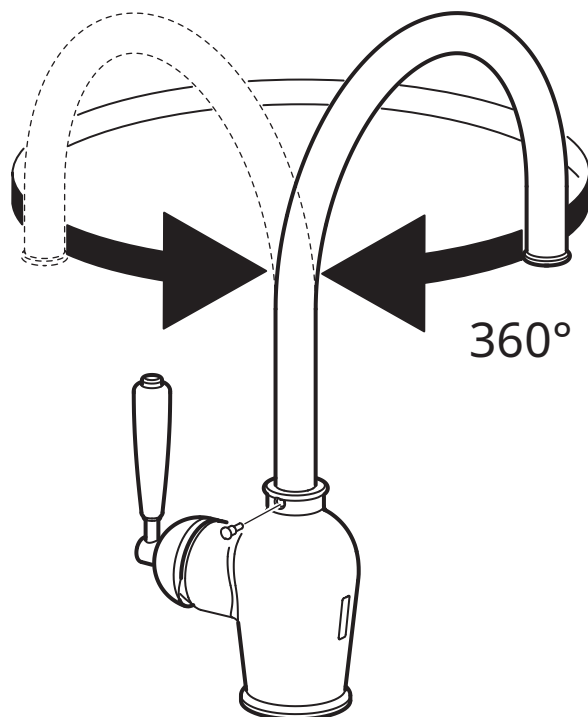
2





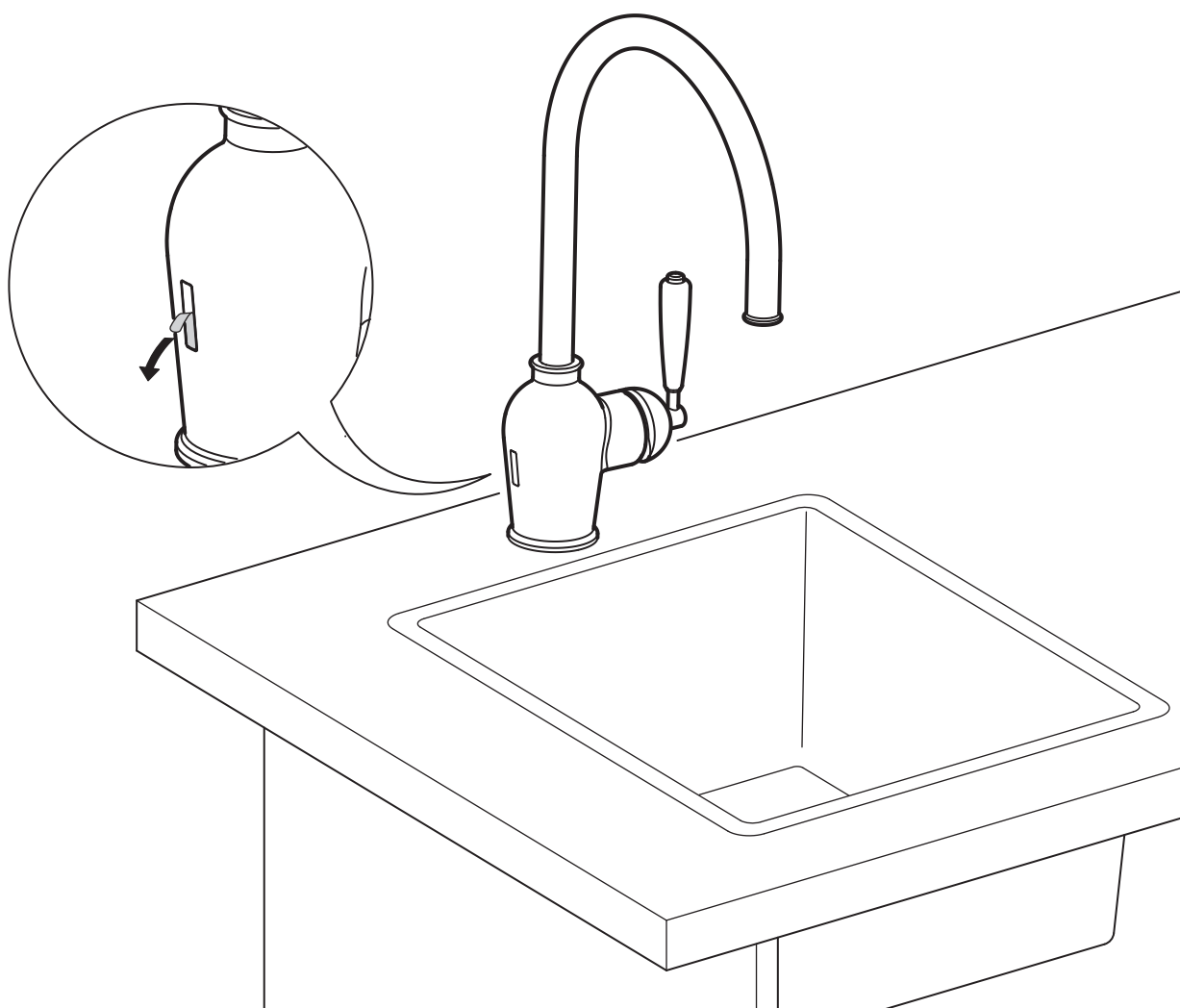
2



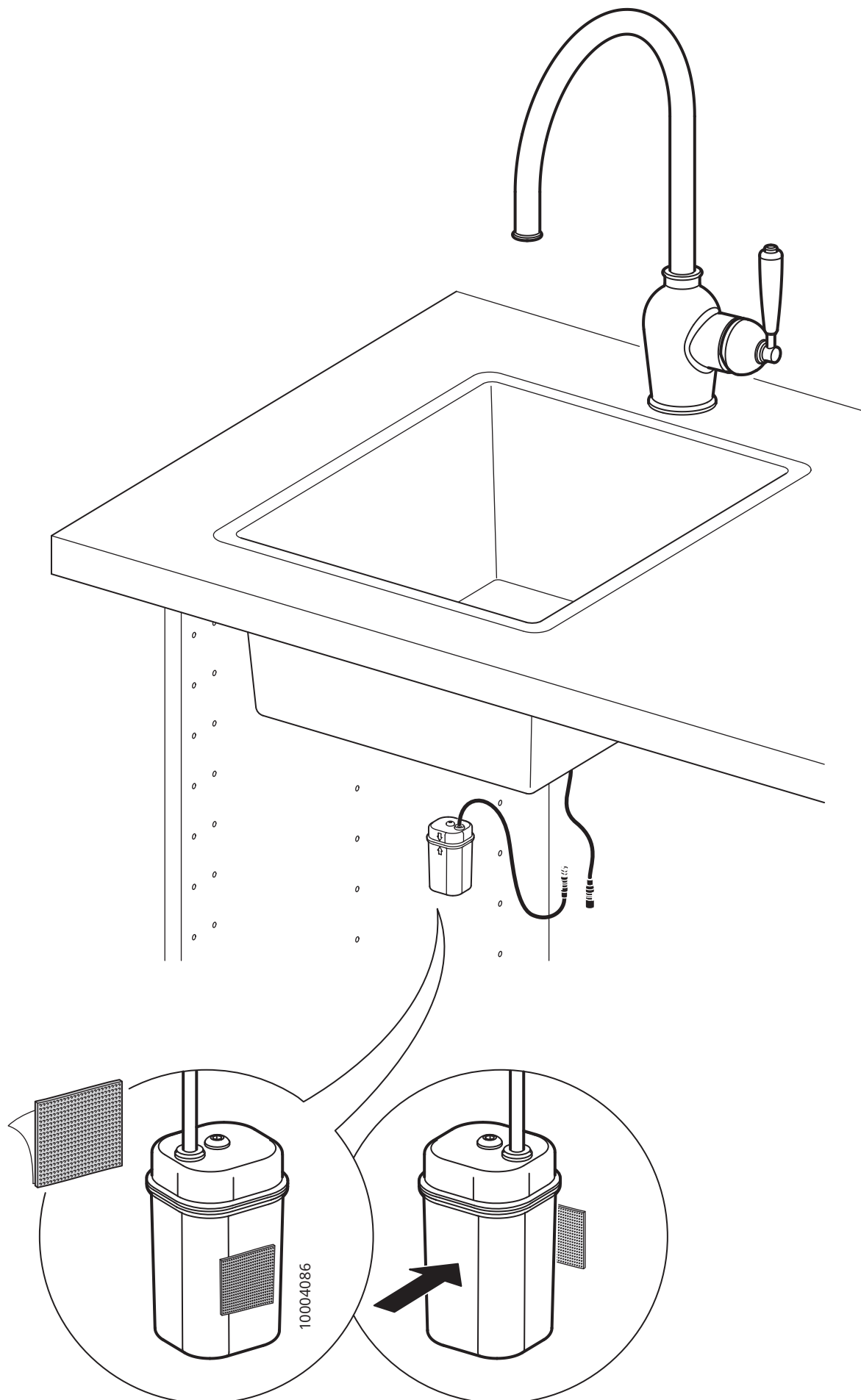




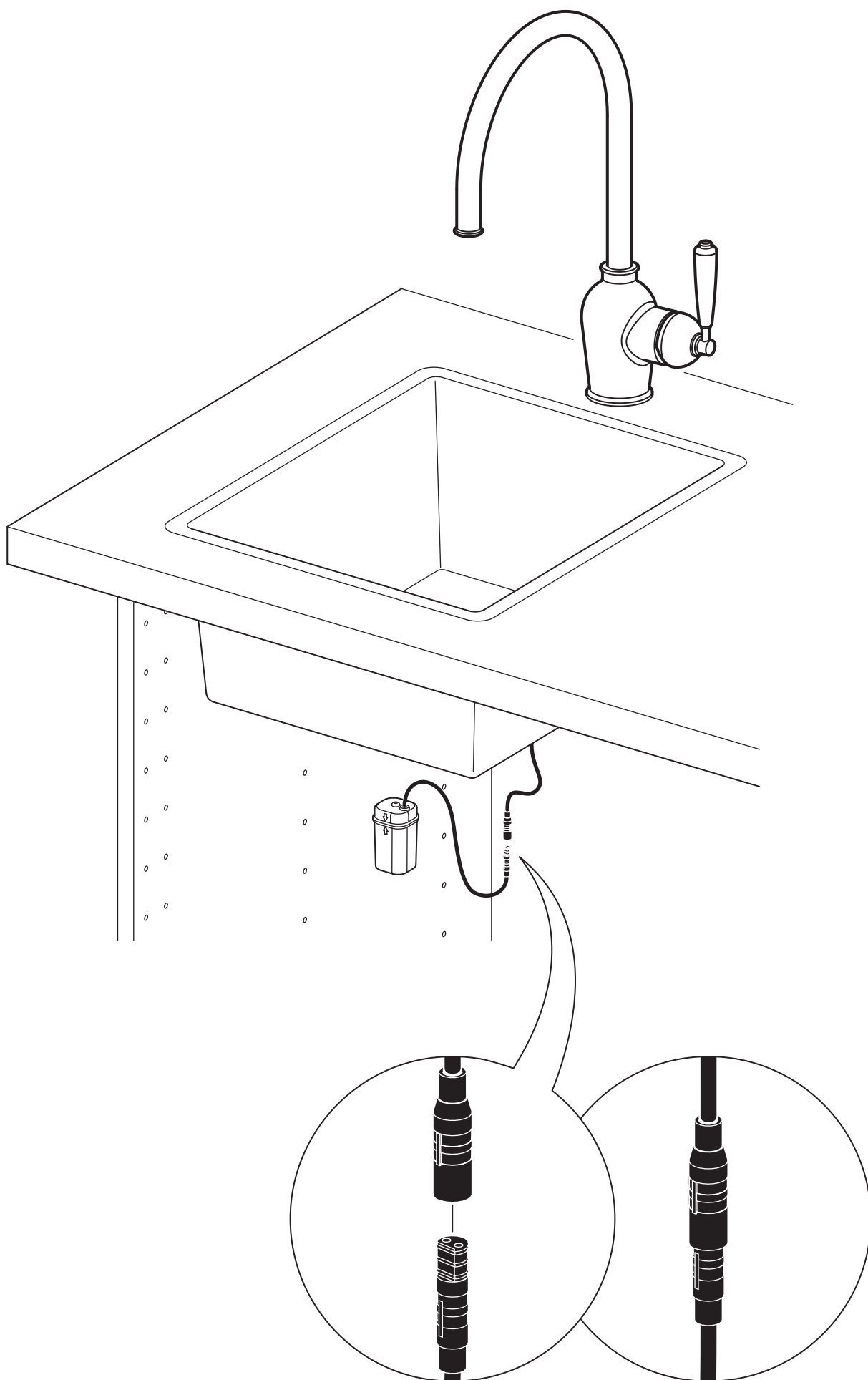
3



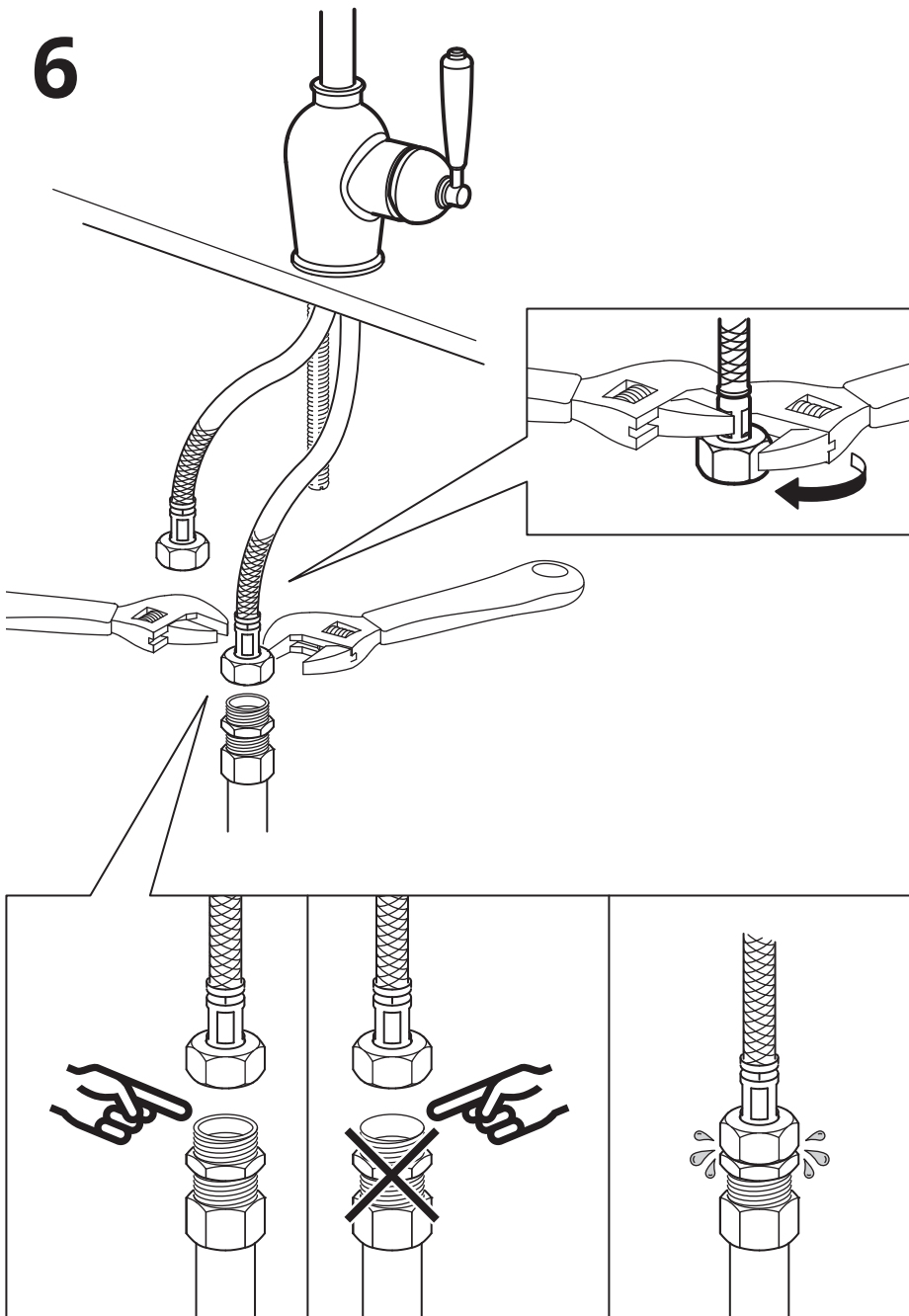
4



5

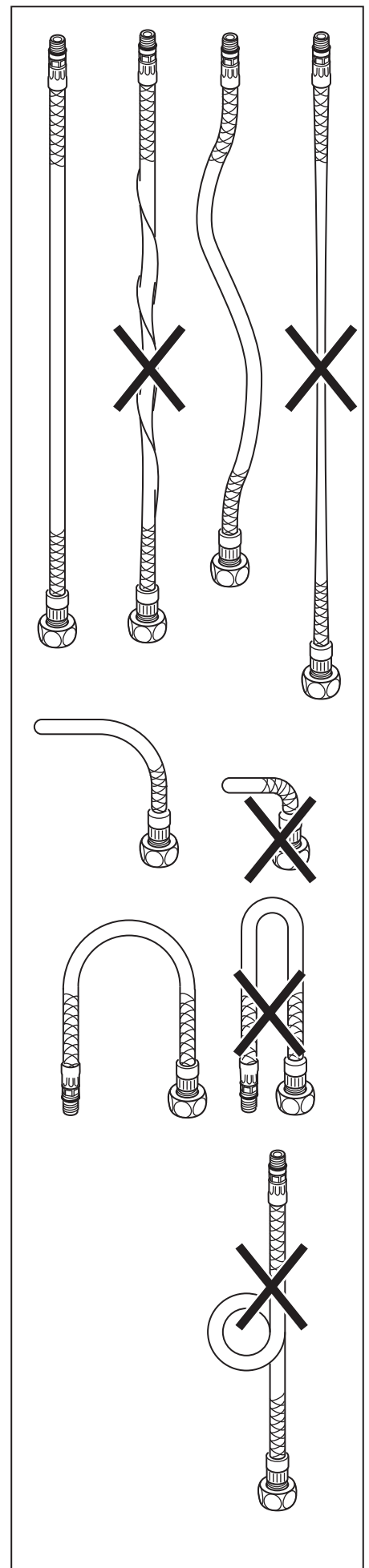


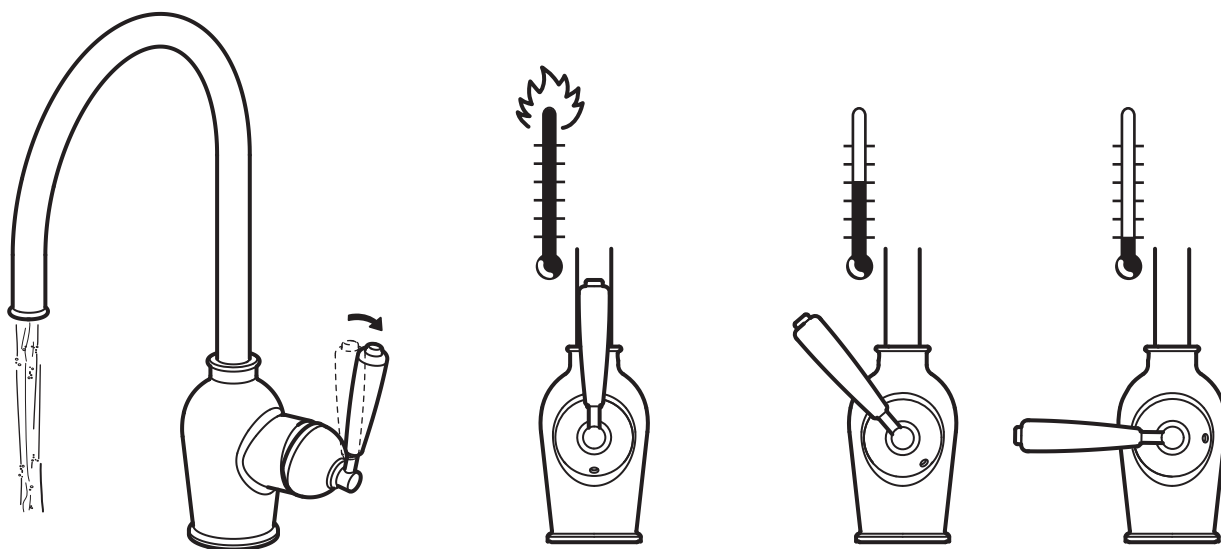
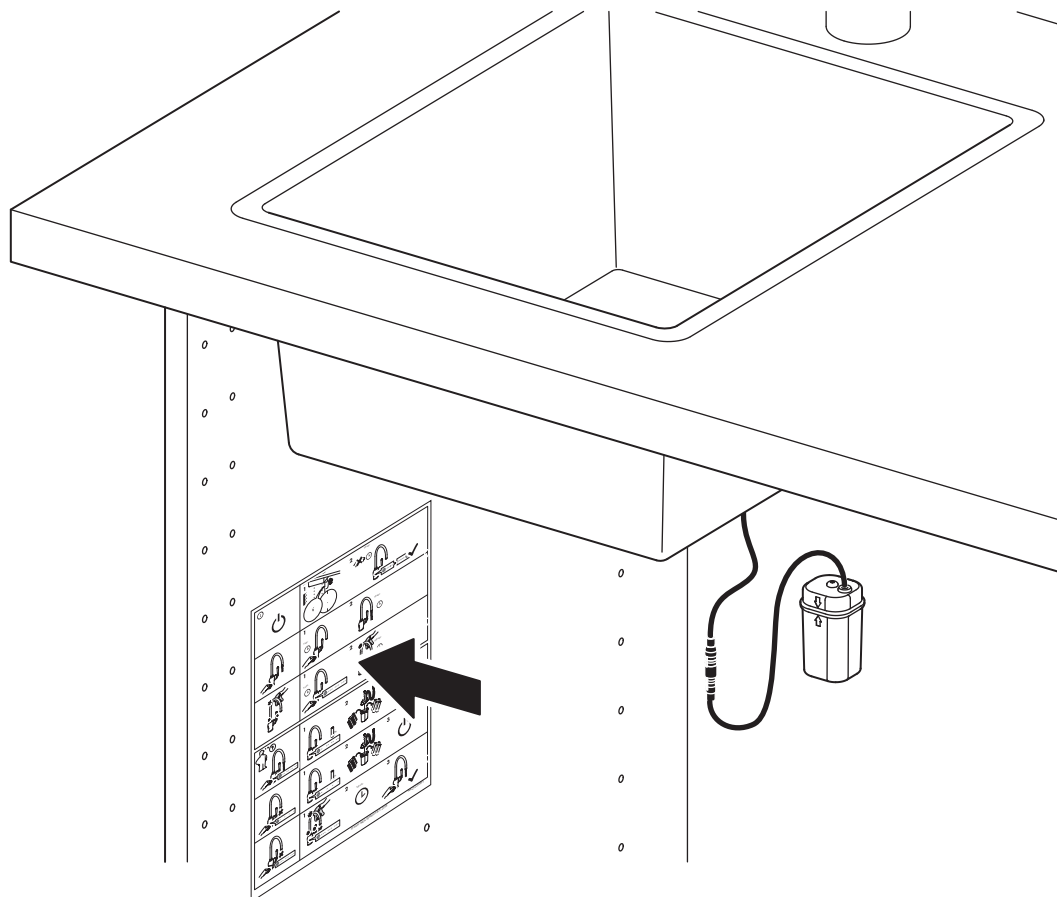
6

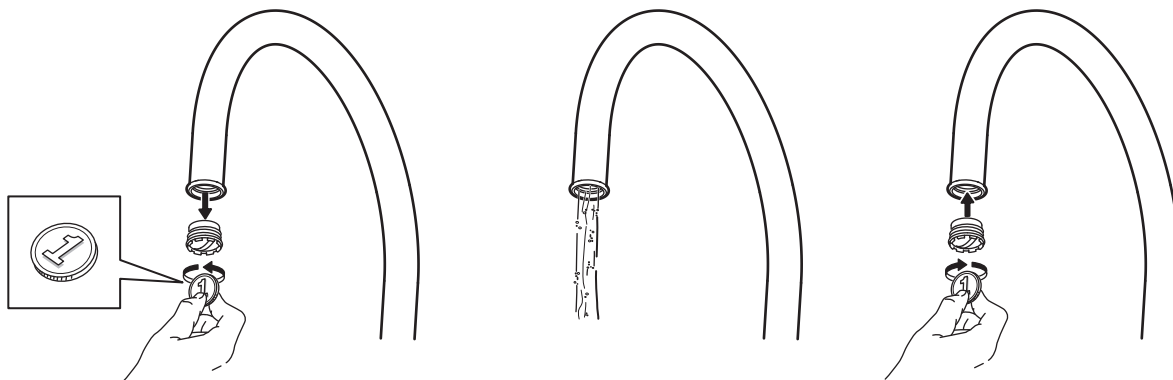


## English

IMPORTANT! Do not tighten too hard: this can damage hoses/pipes and washers.







139269  
Pre-fitted  
High pressure



139268  
Low pressure

## English

Before use: Unscrew the Aerator/Flow Guide with a coin and allow the water to run freely for a few minutes. Then screw the Aerator/Flow Guide back in place up to the stop DO NOT OVER TIGHTEN.



## English

Check at regular intervals to make sure that the installation is not leaking.



## English

To comply with UK water regulations, this product shall be installed in accordance with the following:

Inlet supply hoses shall be installed where light is excluded.



