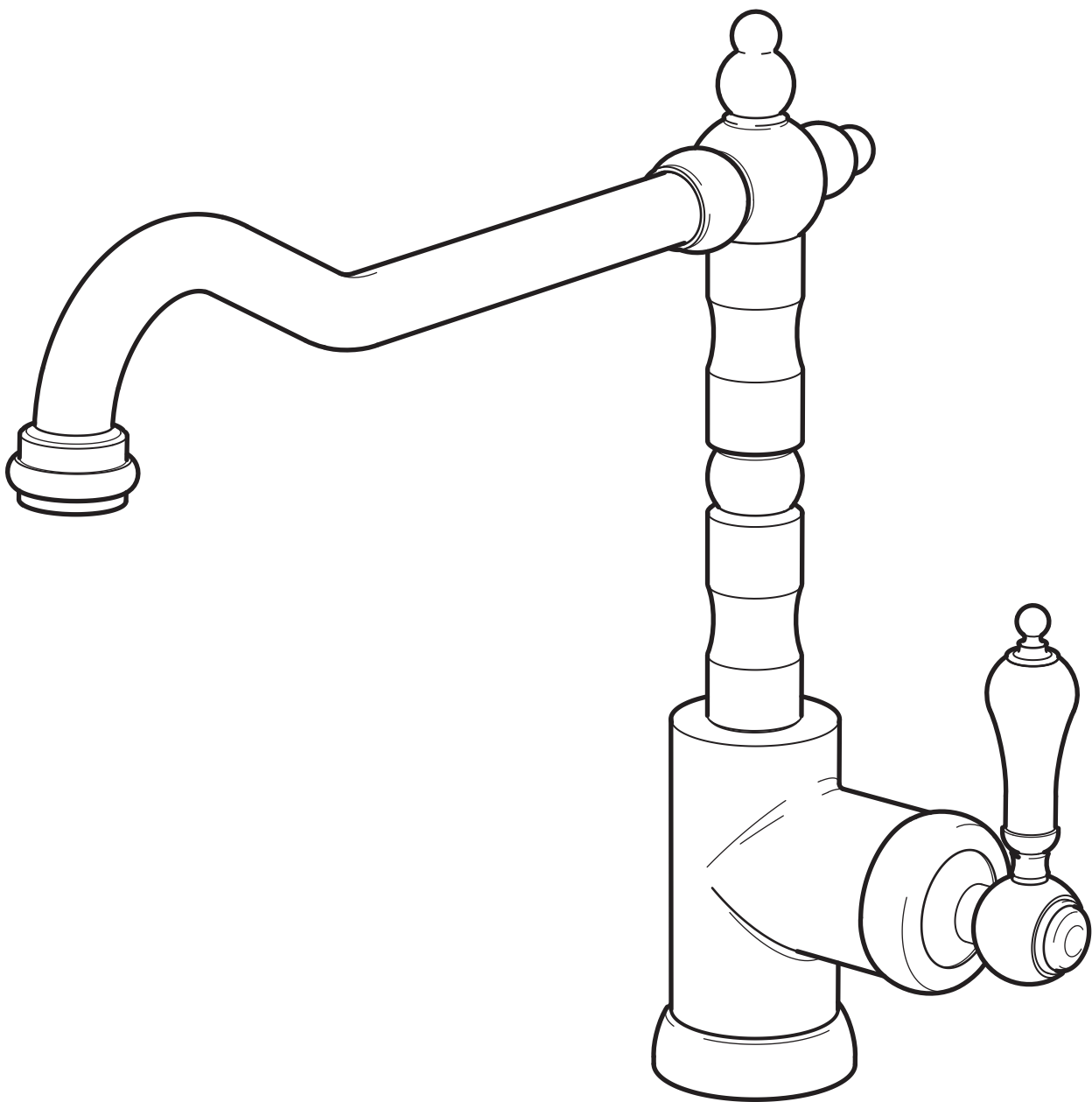


GLITTRAN



Design and Quality
IKEA of Sweden



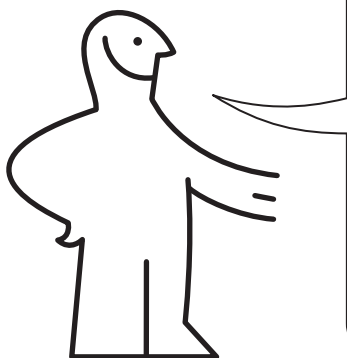
English

Installation must be performed in compliance with current local construction and plumbing regulations. If in doubt, contact a professional.

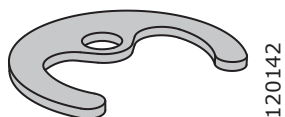
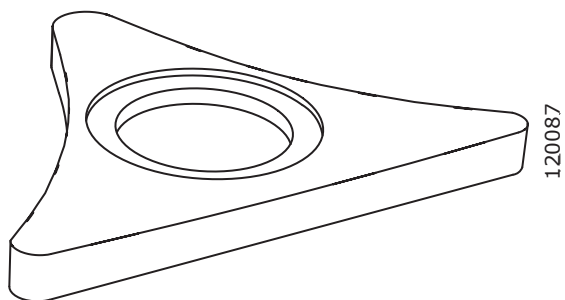
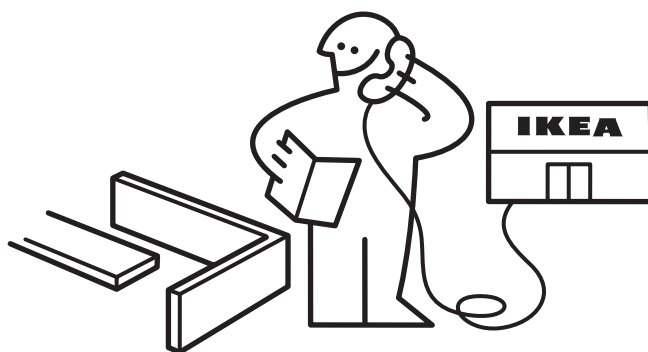
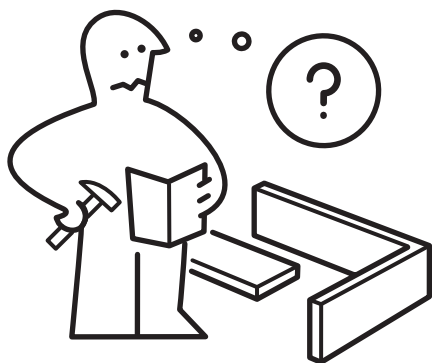


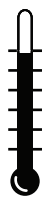
English

Switch off main shut-off valve before changing mixer tap.



2x

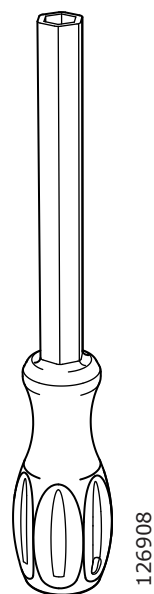
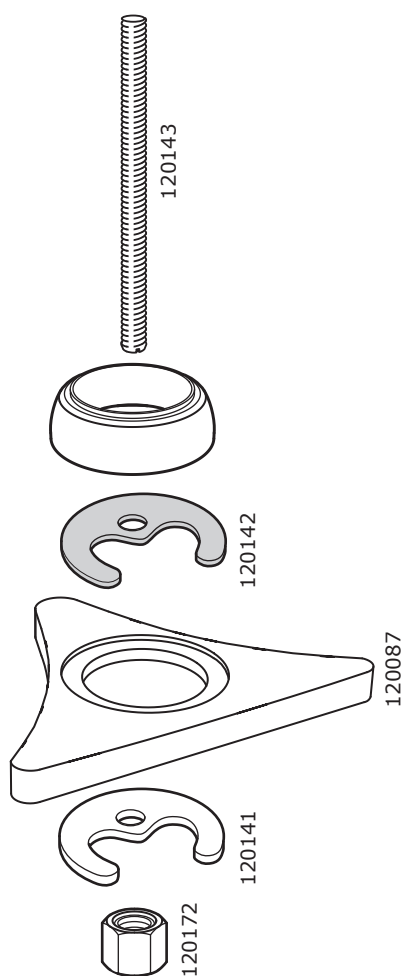
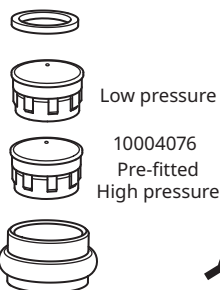
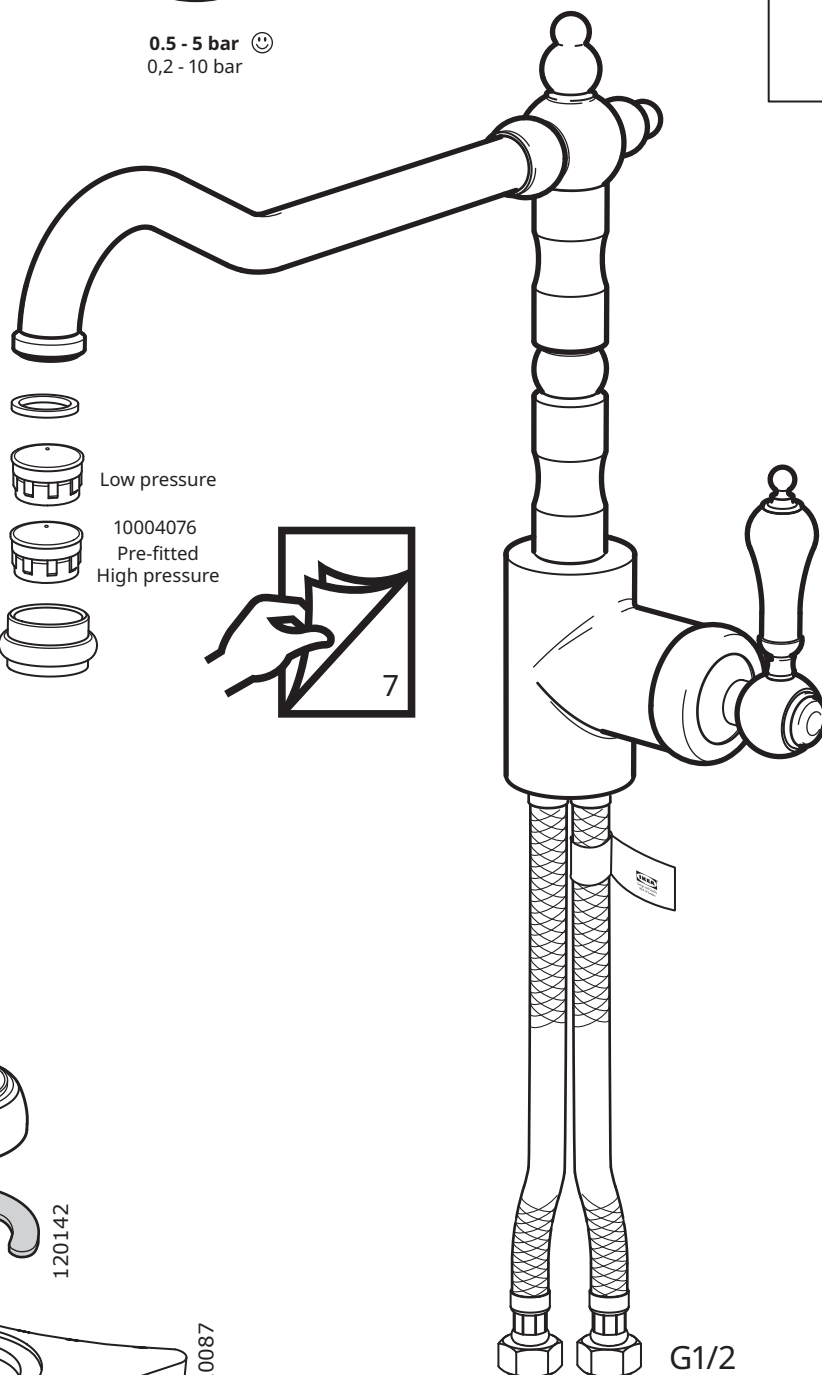
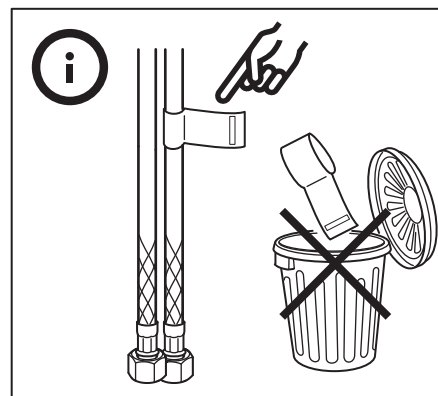




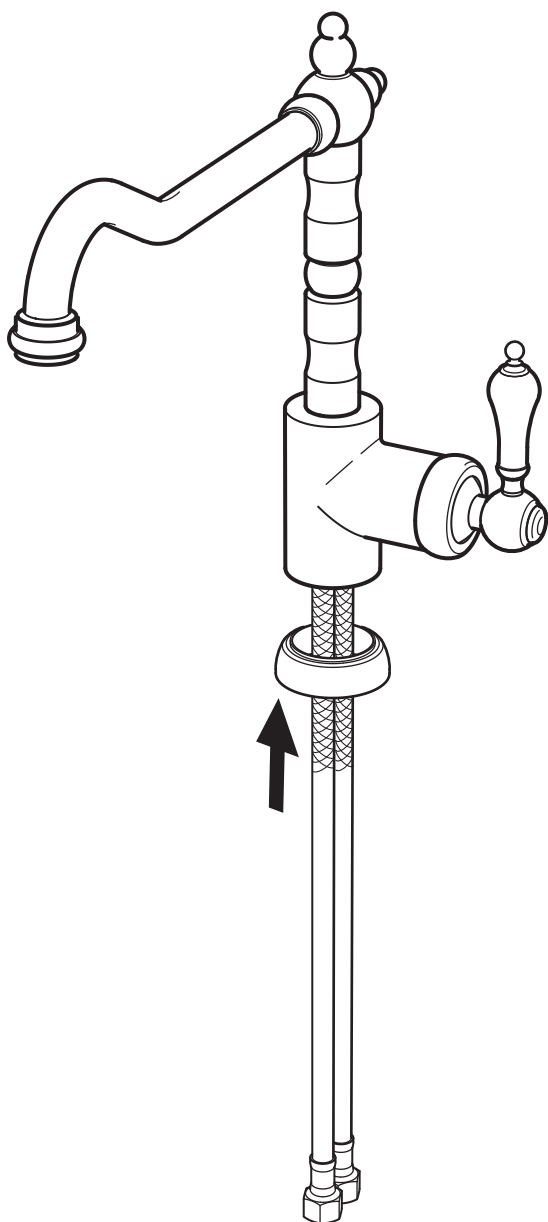
60°C ☺
Max. 80°C



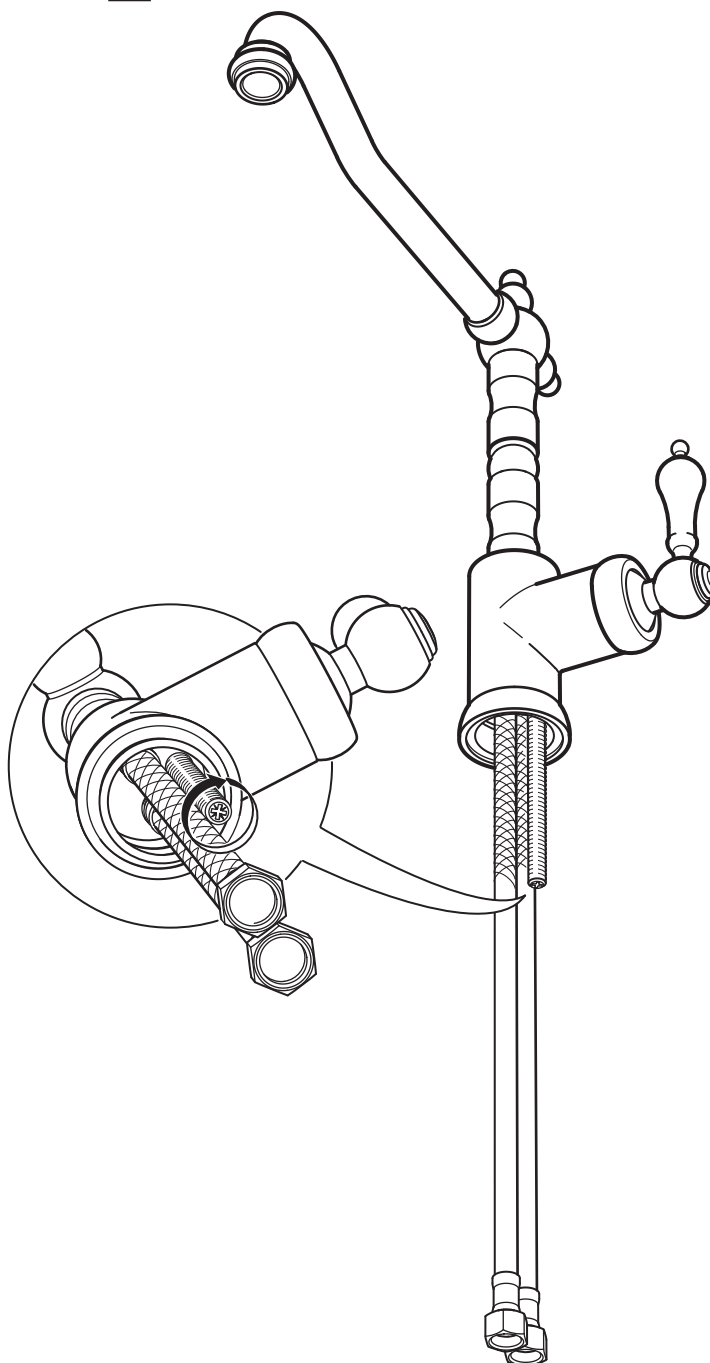
0.5 - 5 bar ☺
0,2 - 10 bar



1



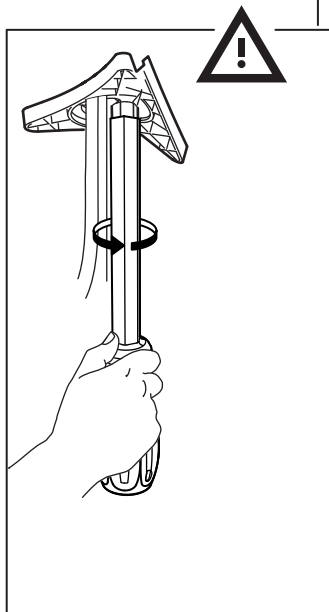
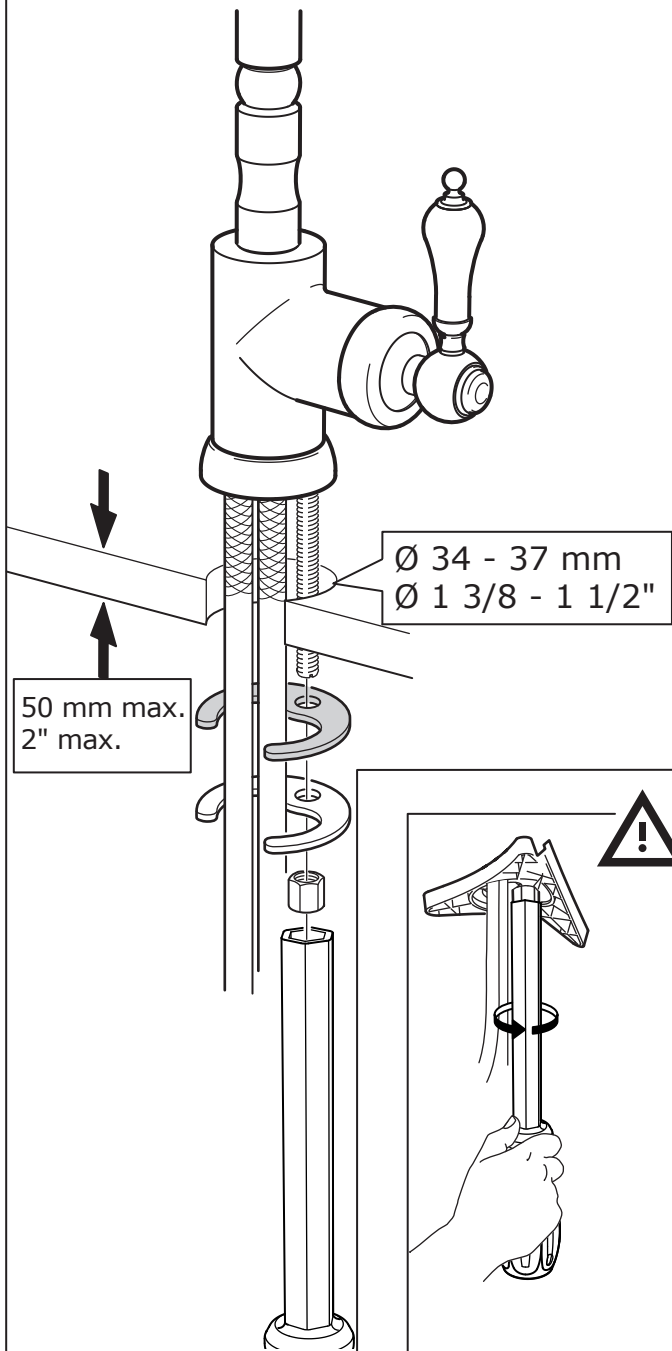
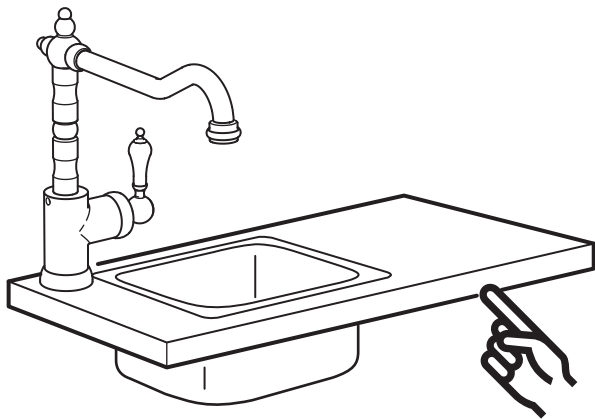
2



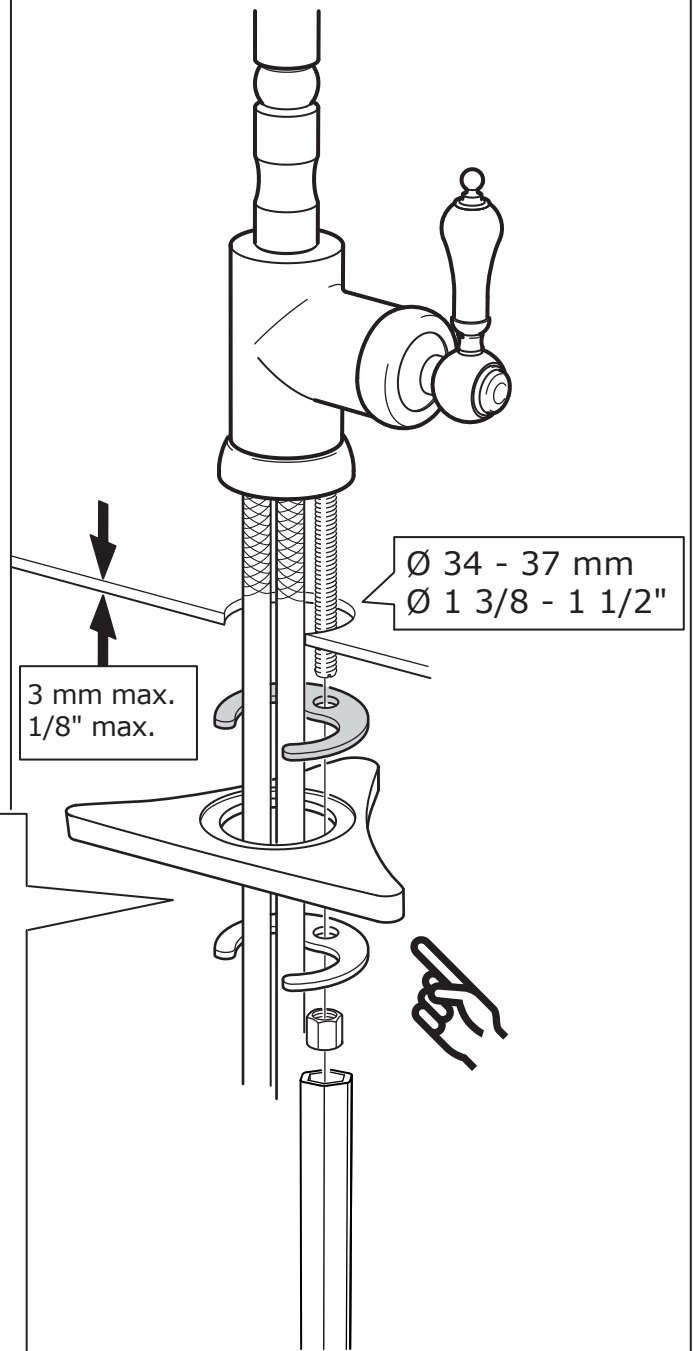
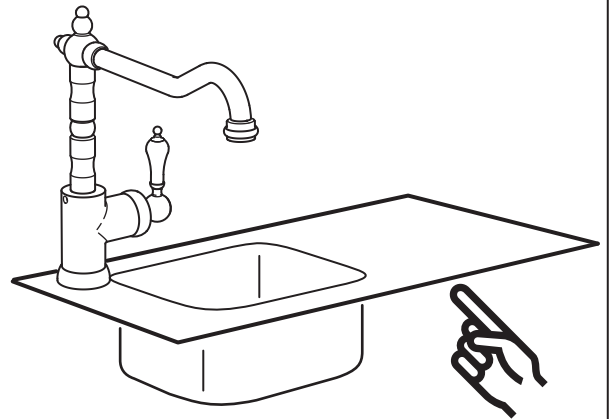
English

Seal the open surfaces with silicone to prevent water from penetrating the worktop upon any leaks. Silicone is not included.

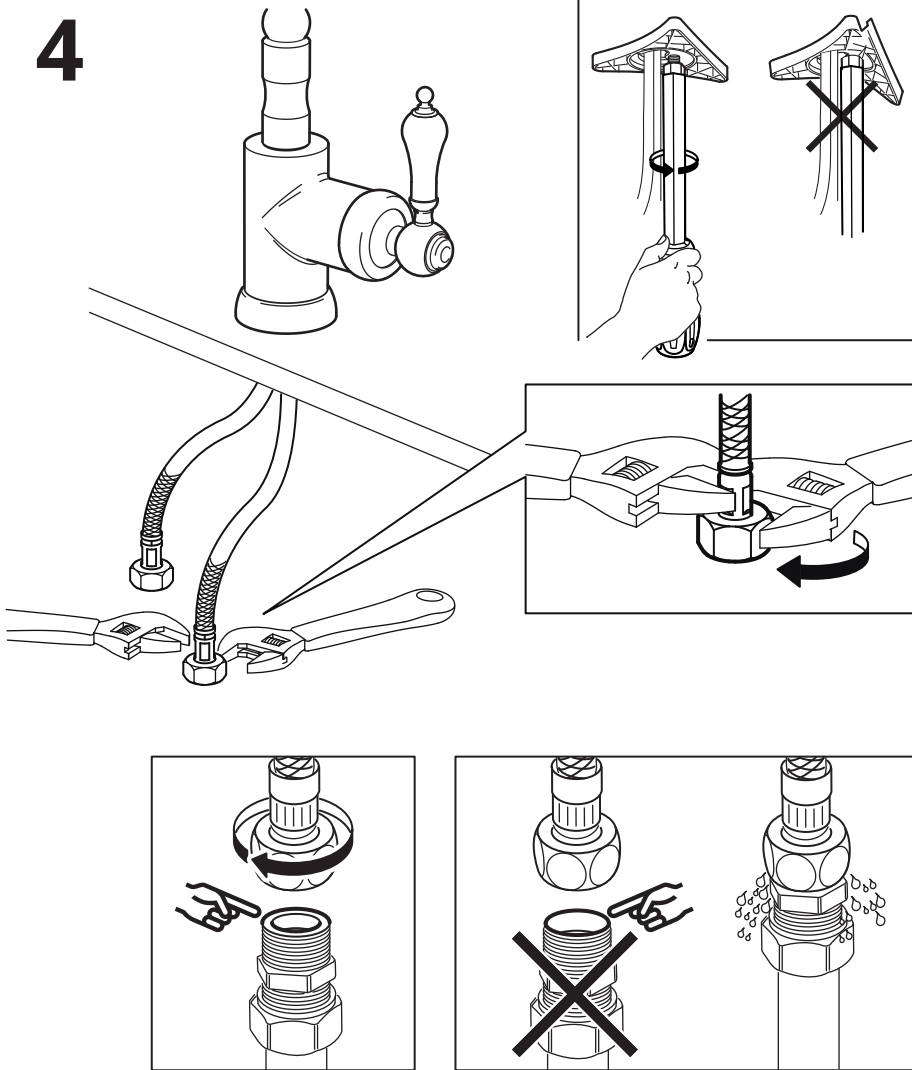
3



3

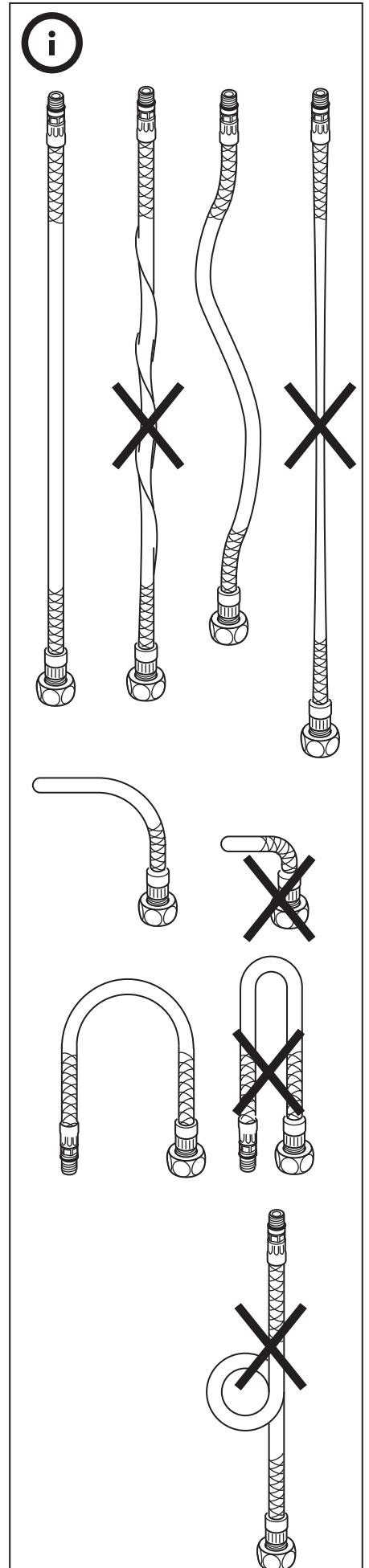


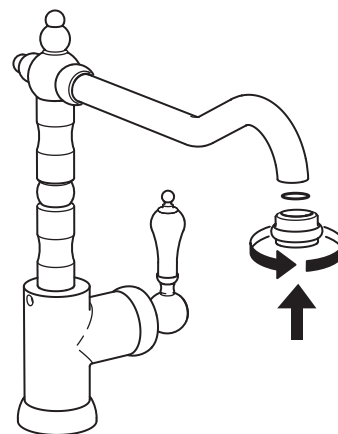
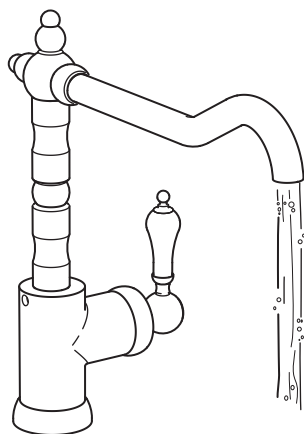
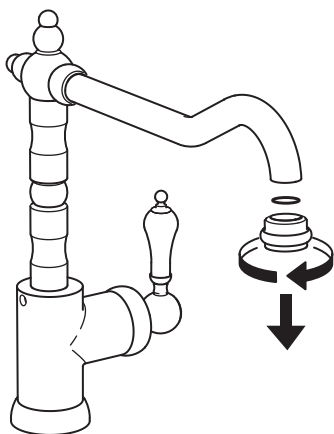
4



English

IMPORTANT! Do not tighten too hard: this can damage hoses/pipes and washers.





English

Before use: Unscrew the Aerator/Flow Guide with a coin and allow the water to run freely for a few minutes. Then screw the Aerator/Flow Guide back in place up to the stop DO NOT OVER TIGHTEN.



10004076
Pre-fitted
High pressure



Low pressure



English

Check at regular intervals to make sure that the installation is not leaking.

