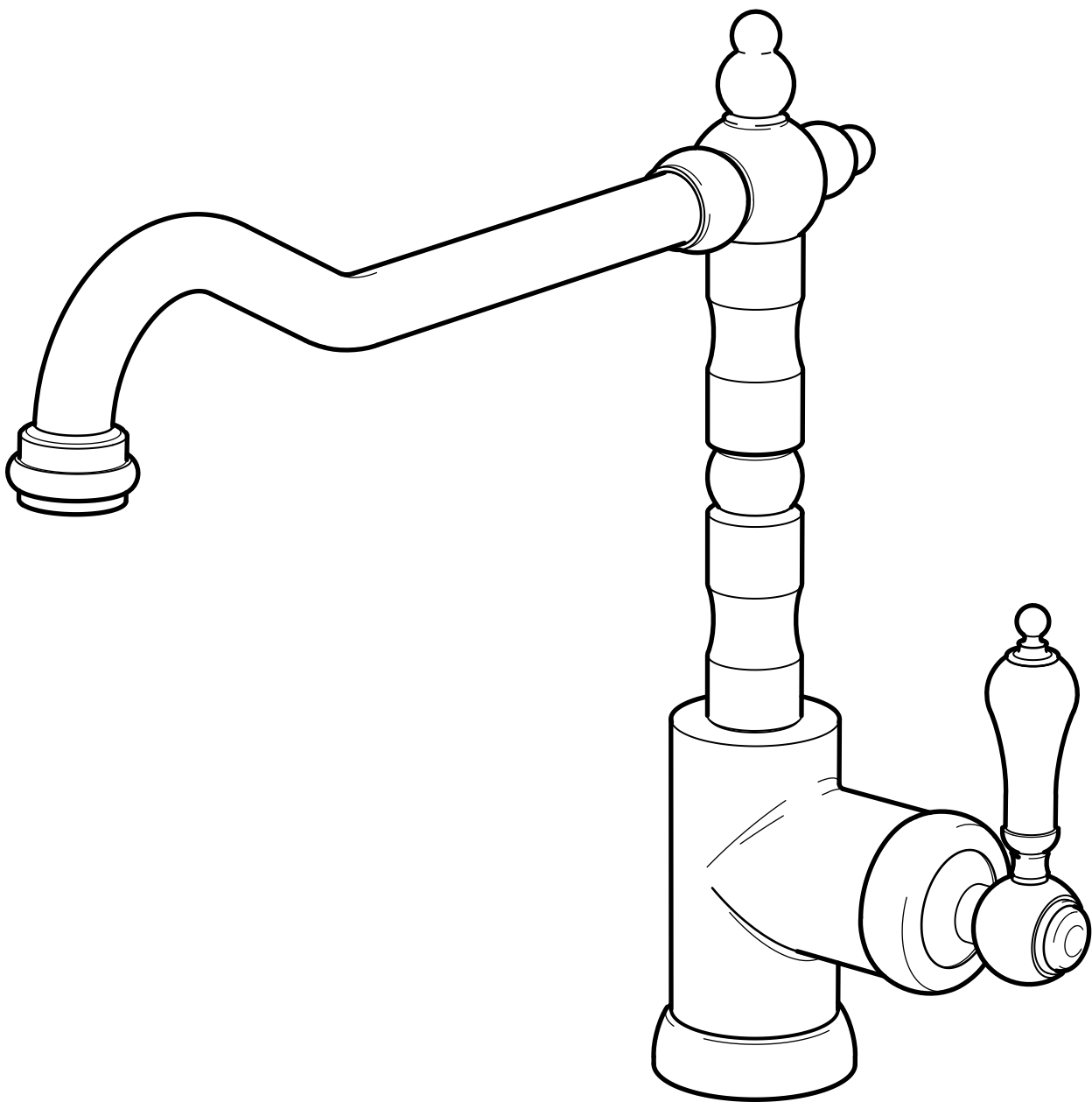
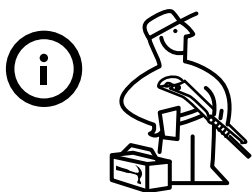


# GLITTRAN



Design and Quality  
IKEA of Sweden



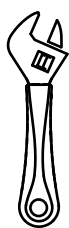
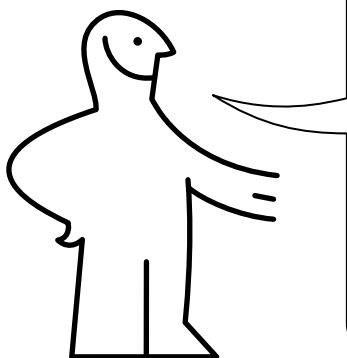
#### English

Installation must be performed in compliance with current local construction and plumbing regulations. If in doubt, contact a professional.

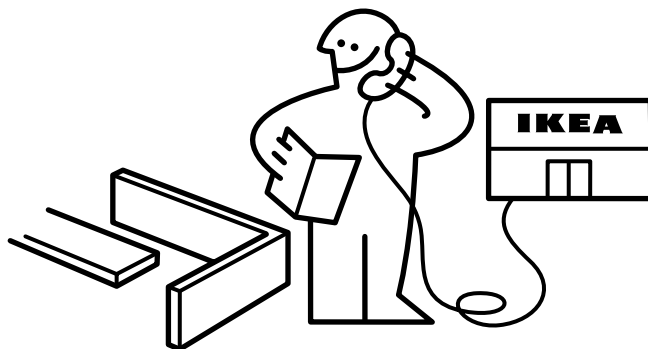
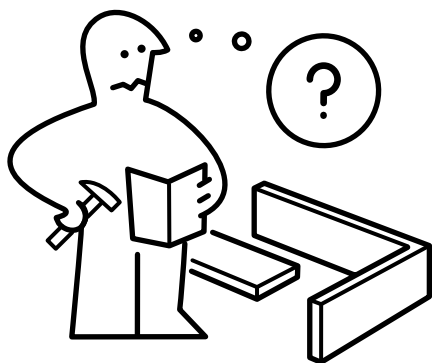


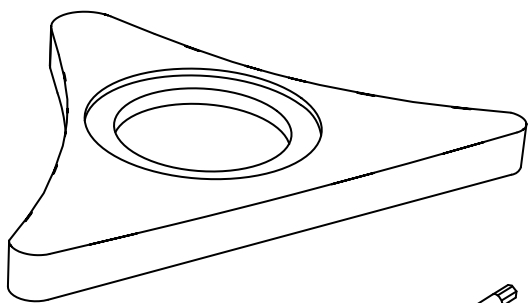
#### English

Switch off main shut-off valve before changing mixer tap.

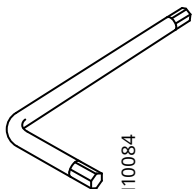


2x





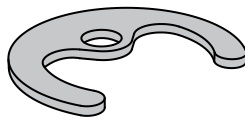
120087



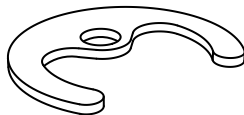
110084



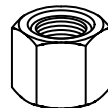
10079215



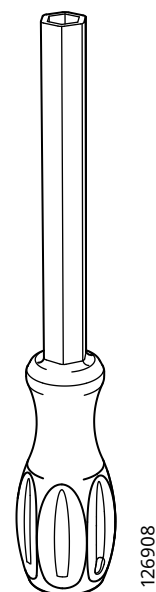
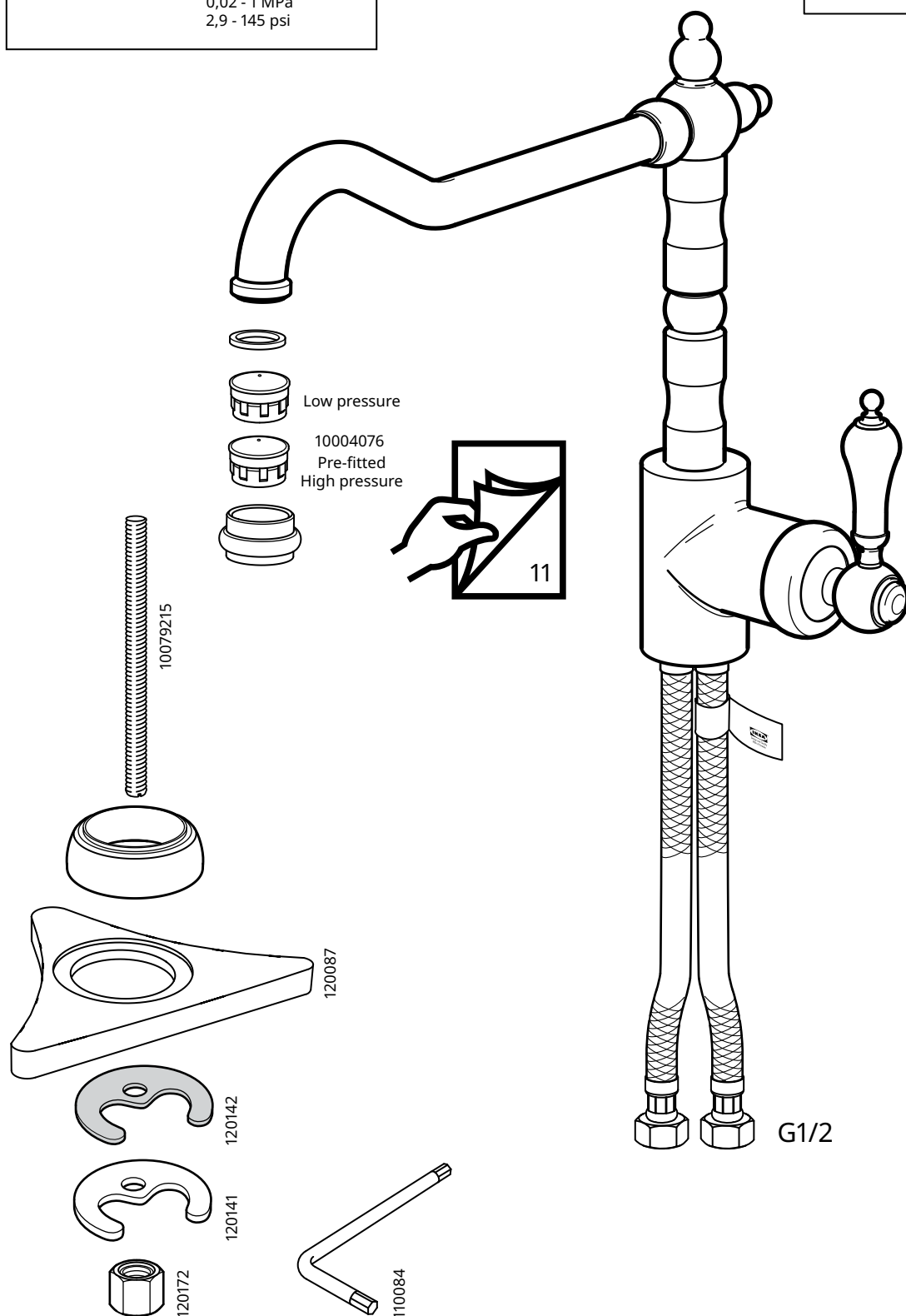
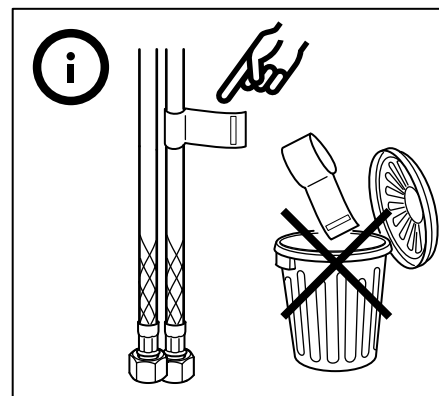
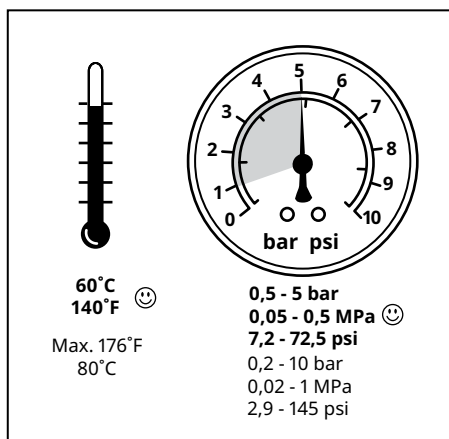
120142



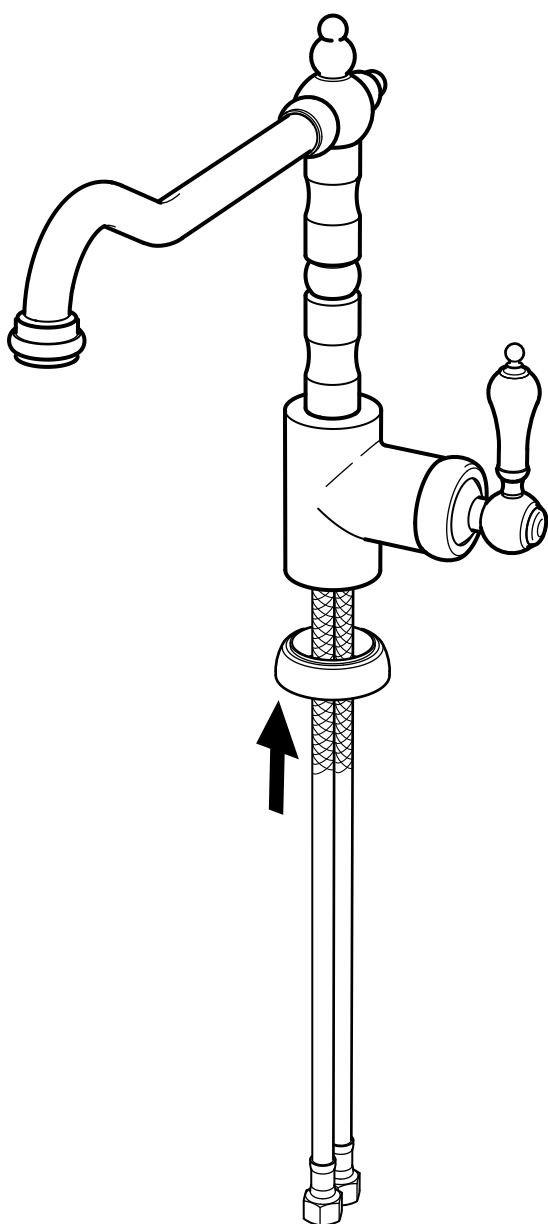
120141



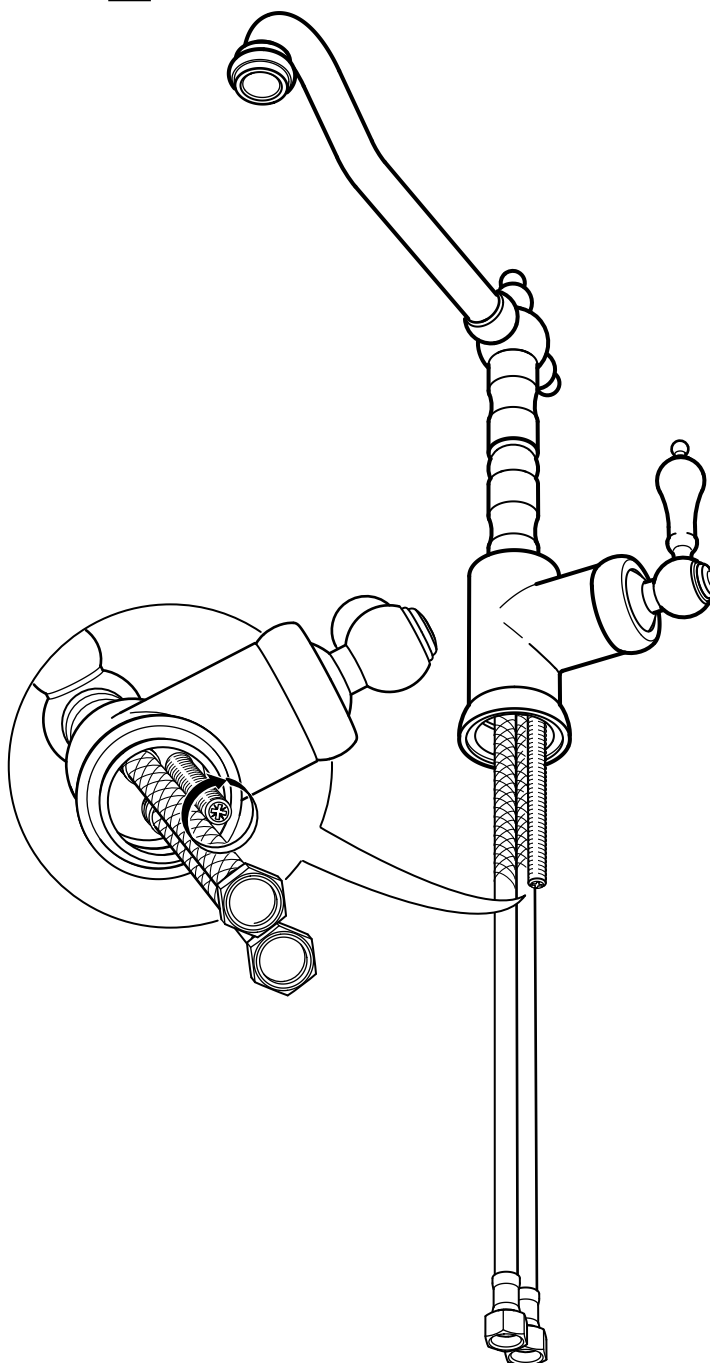
120172



1

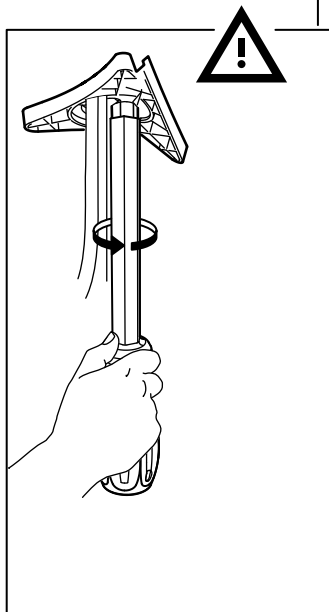
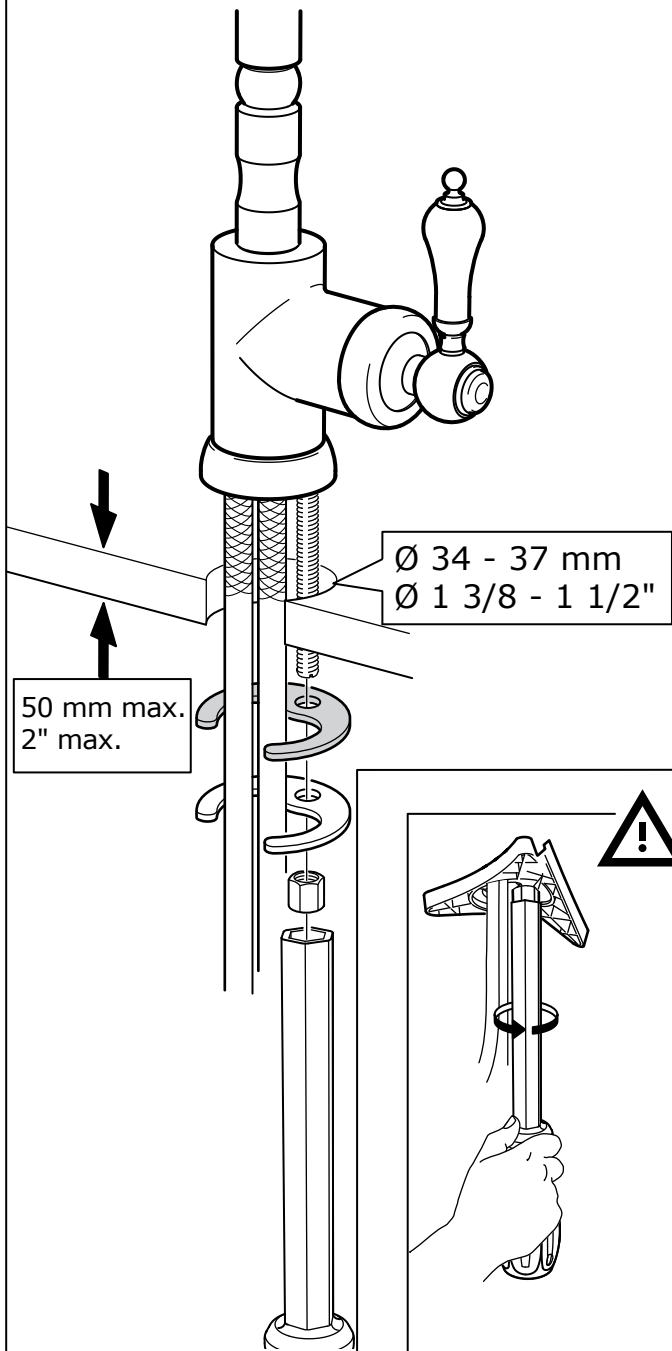
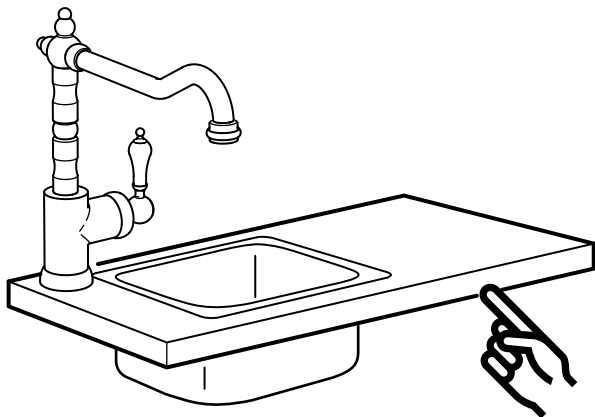


2

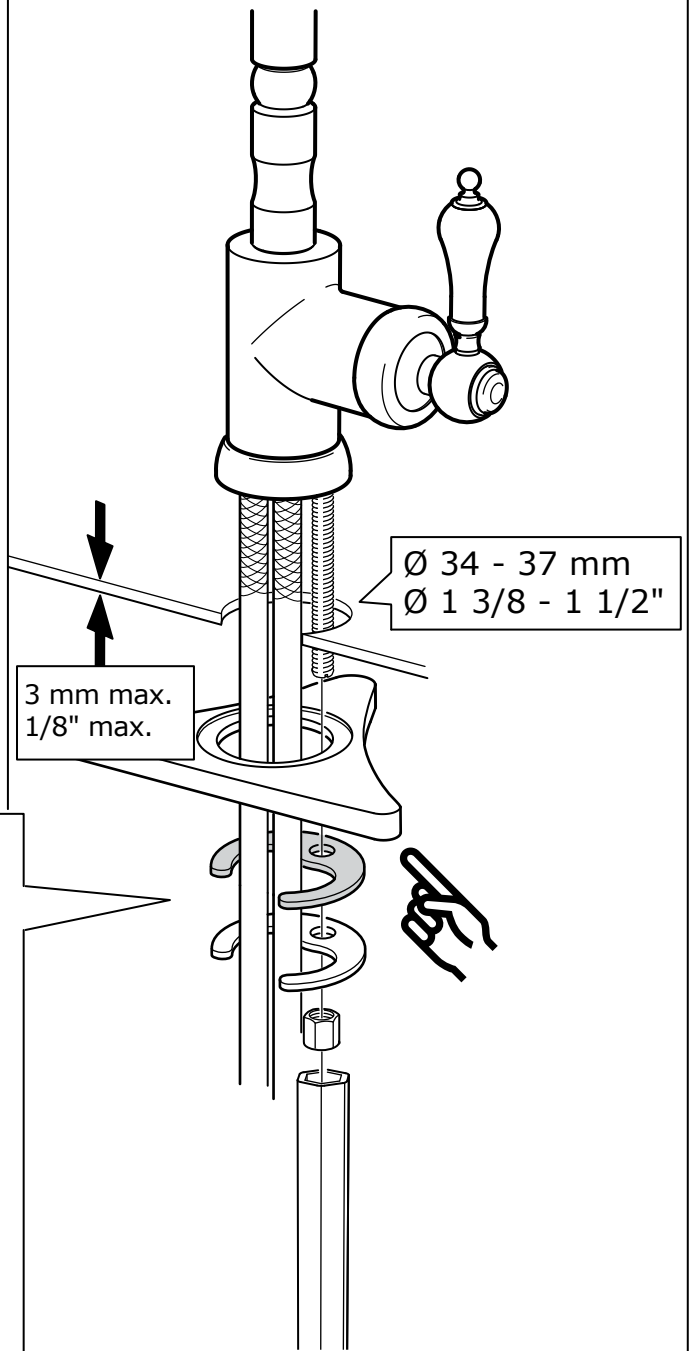
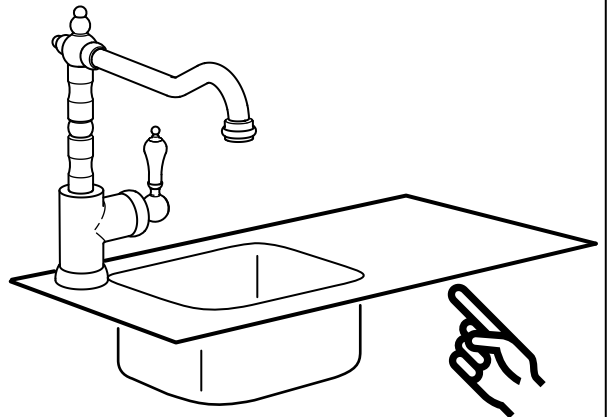
**English**

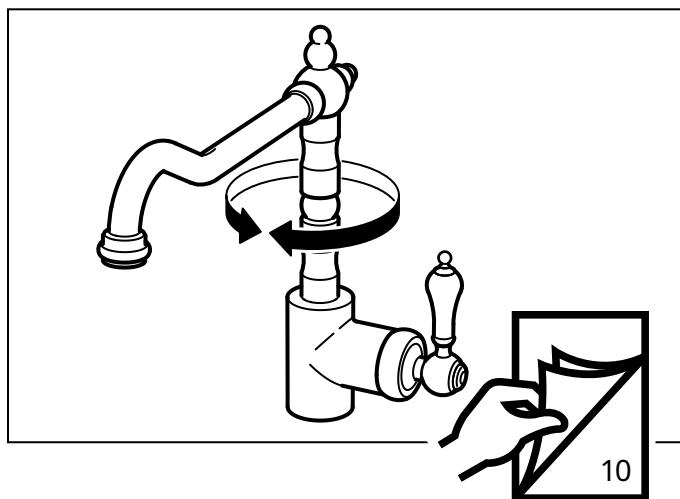
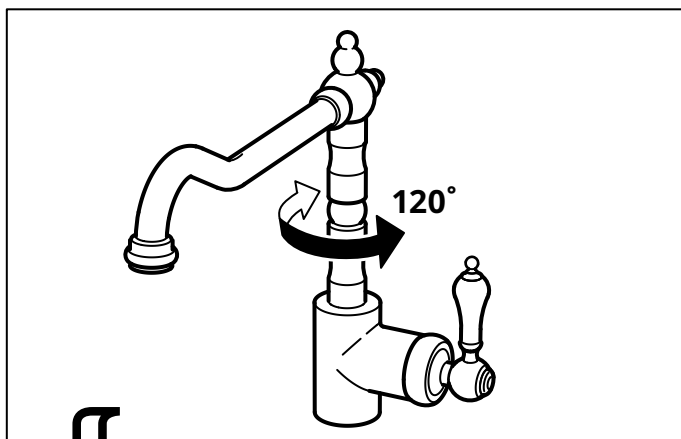
Seal the open surfaces with silicone to prevent water from penetrating the worktop upon any leaks. Silicone is not included.

3

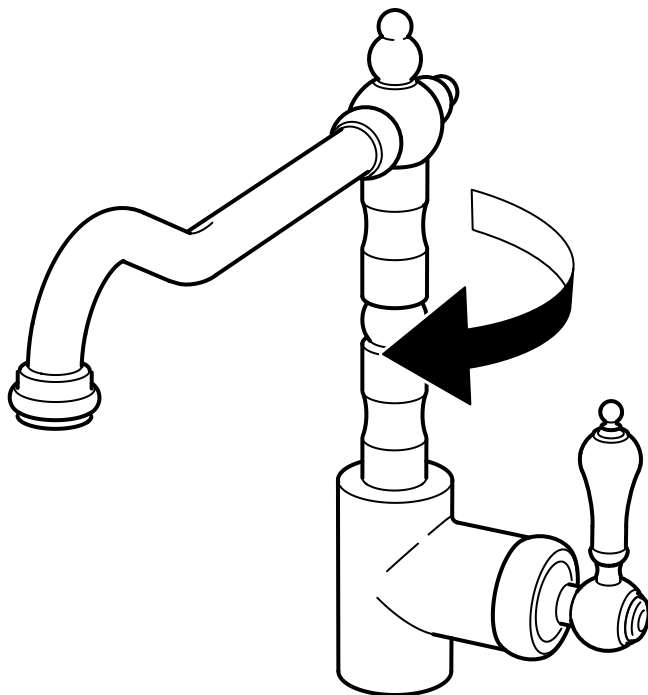


3

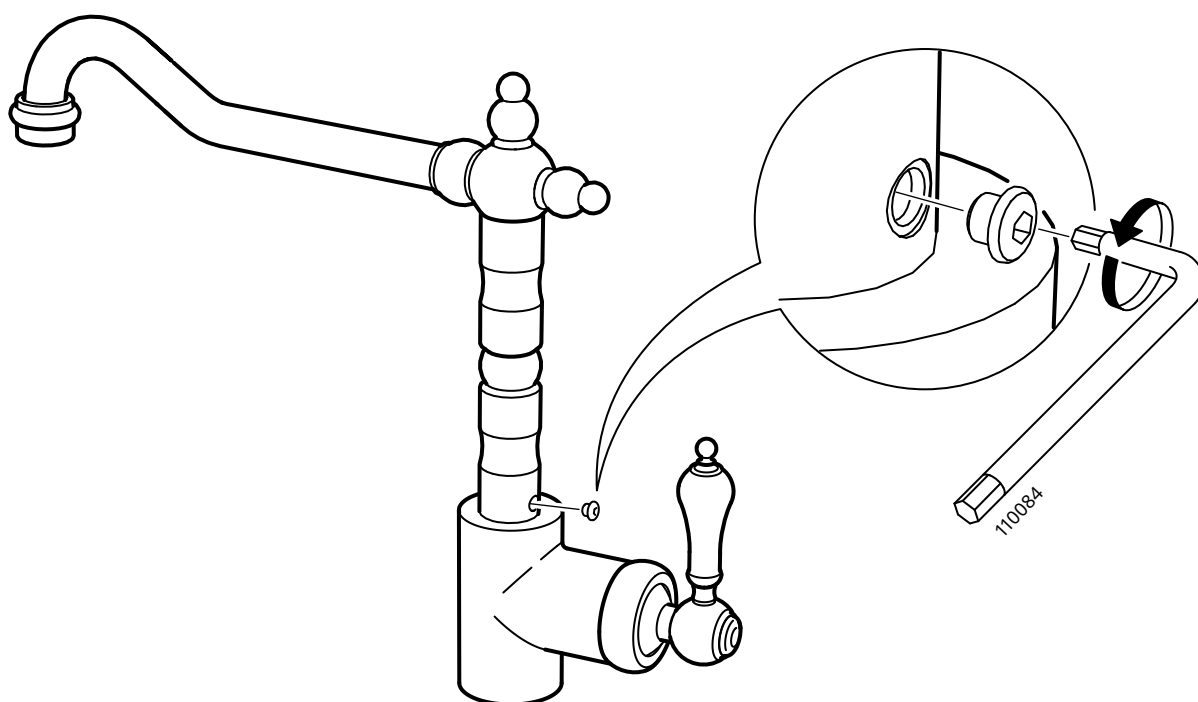




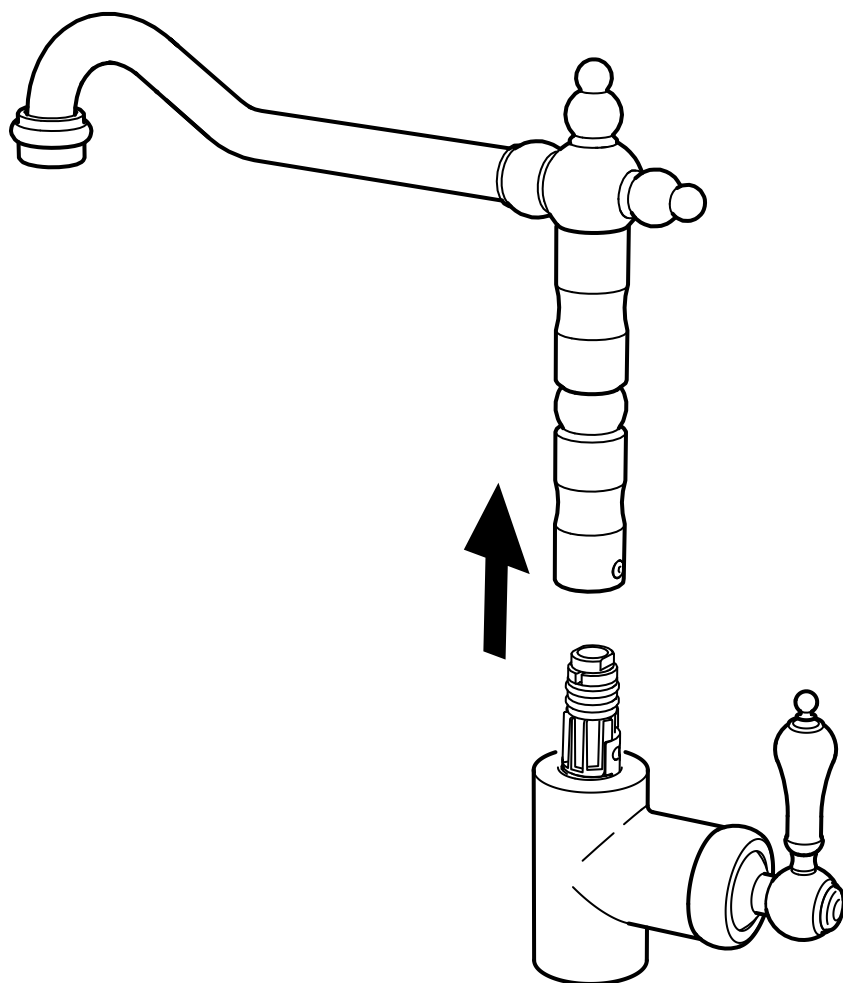
4



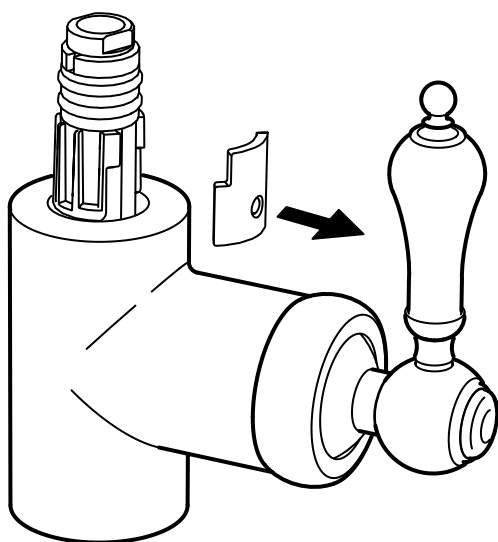
5



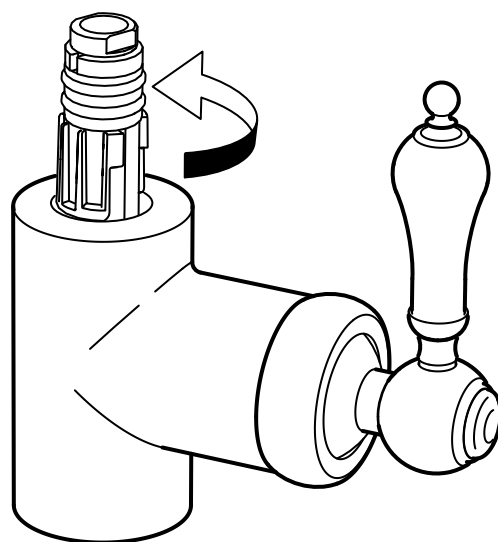
6



7

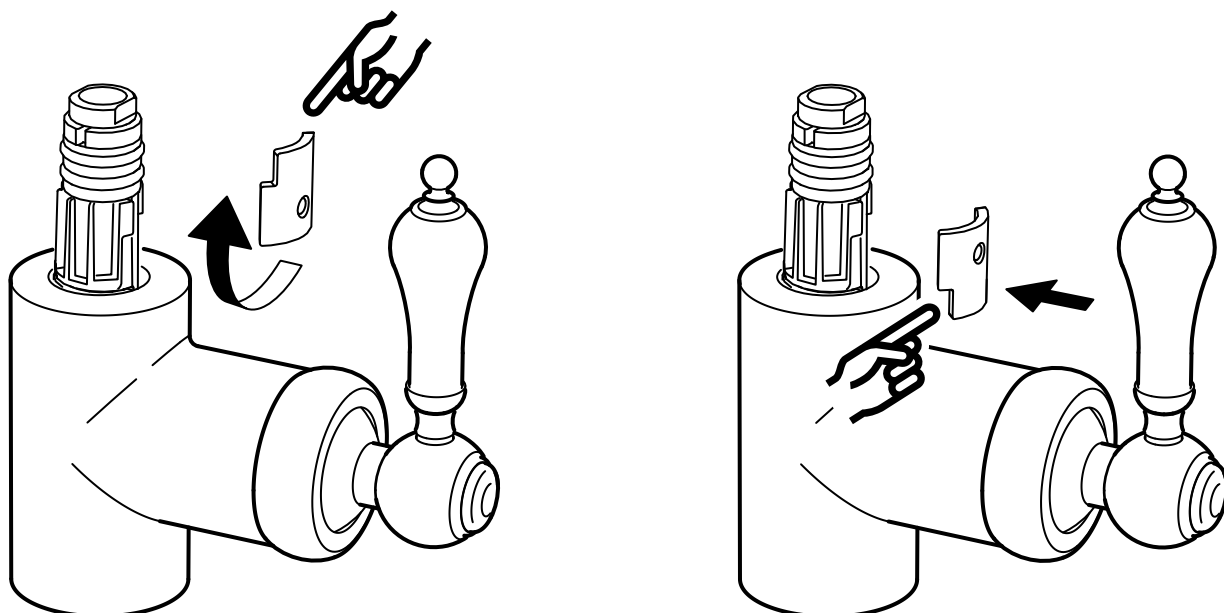


8

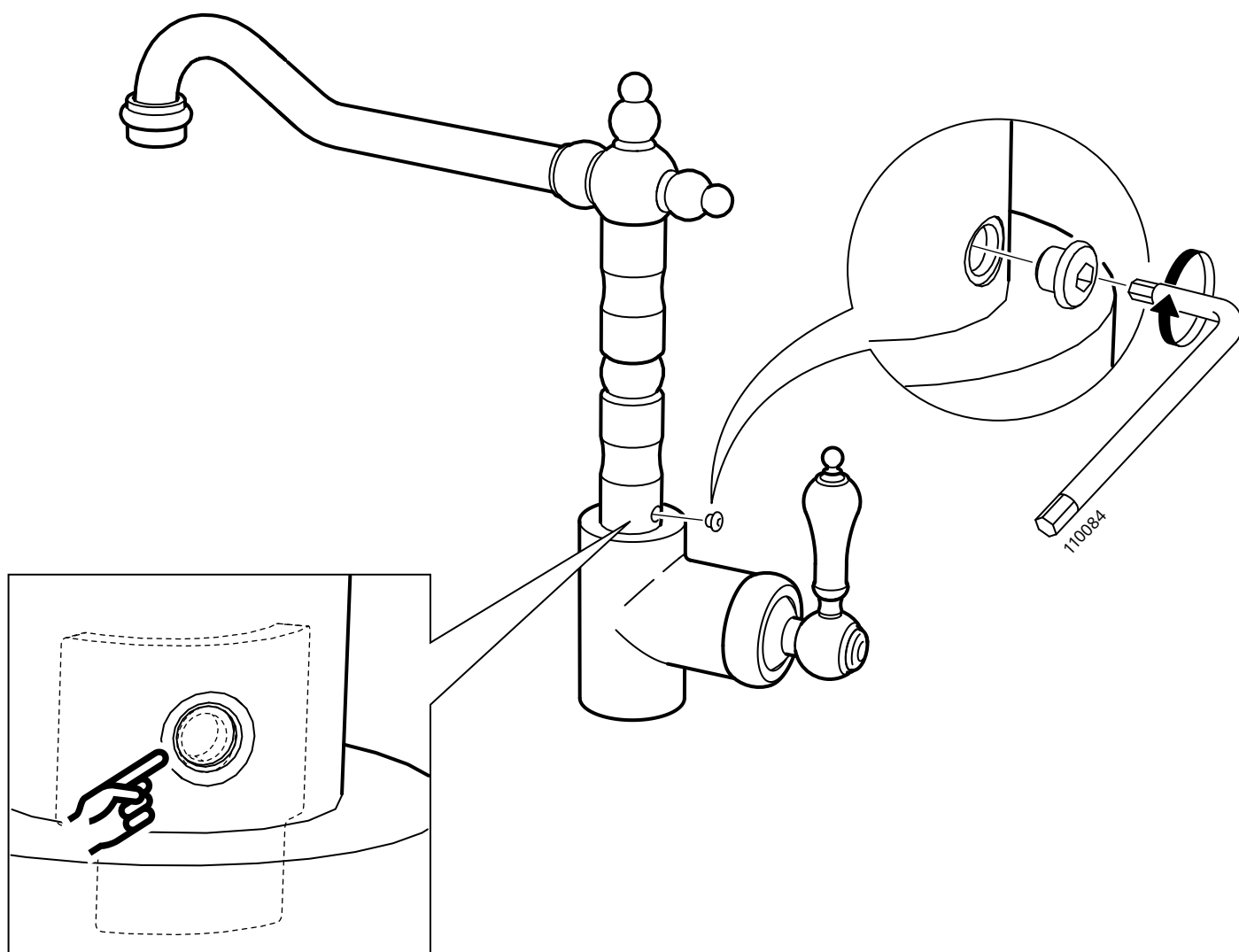




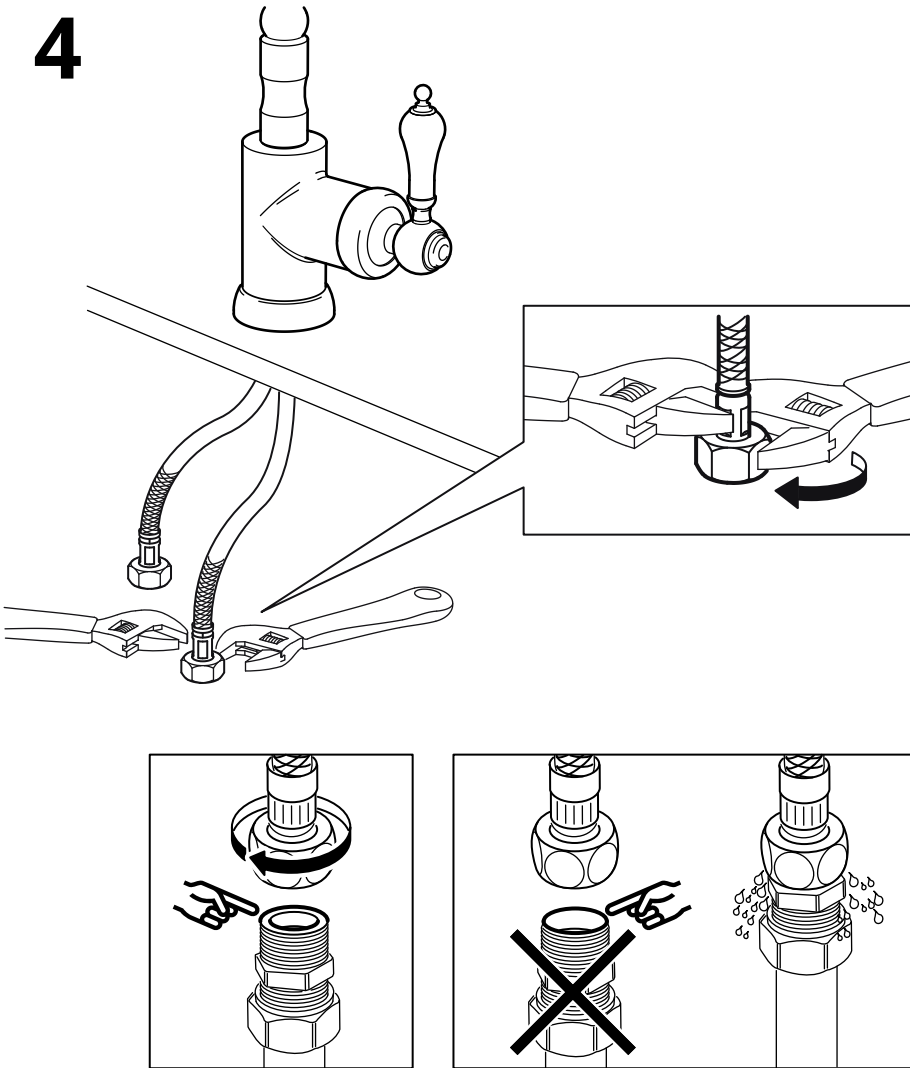
9



10

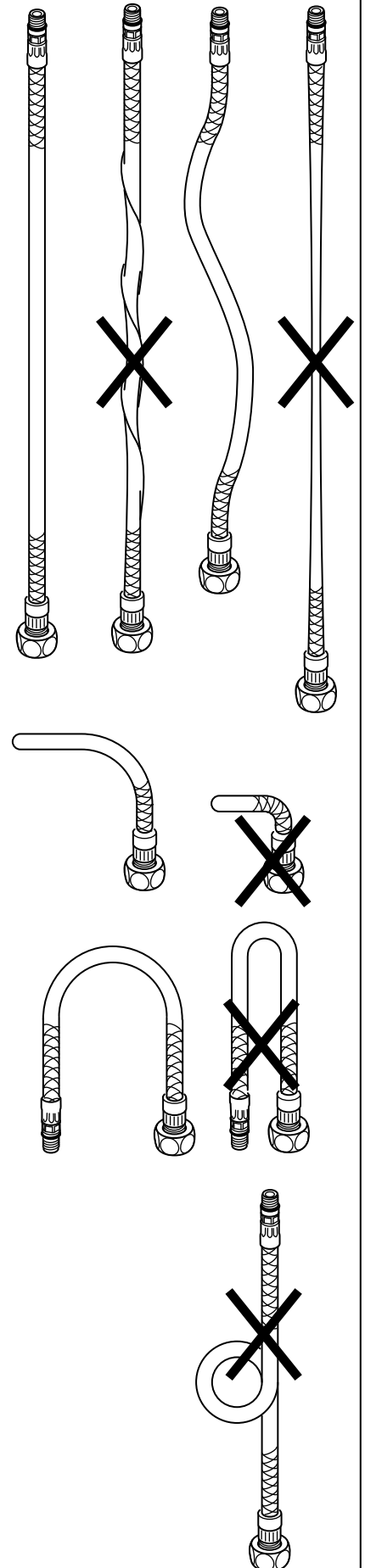


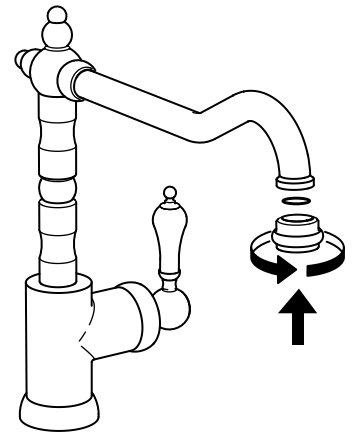
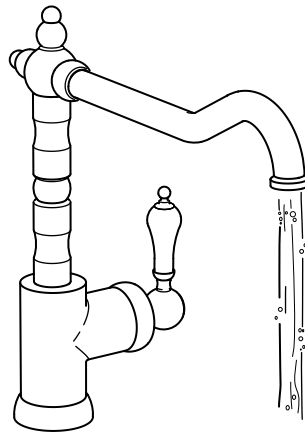
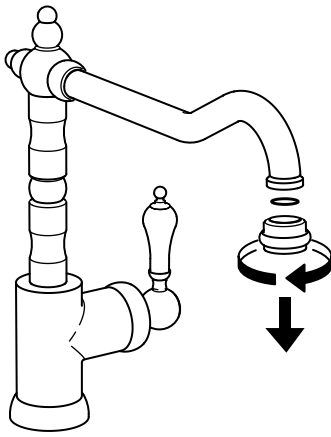
# 4



## English

IMPORTANT! Do not tighten too hard: this can damage hoses/pipes and washers.





#### English

Before use: Unscrew the Aerator/Flow Guide and allow the water to run freely for a few minutes. Then screw the Aerator/Flow Guide back in place. Ensure that it is tight to prevent removal by hand.



10004076  
Pre-fitted  
High pressure



Low pressure



#### English

Check at regular intervals to make sure that the installation is not leaking.

