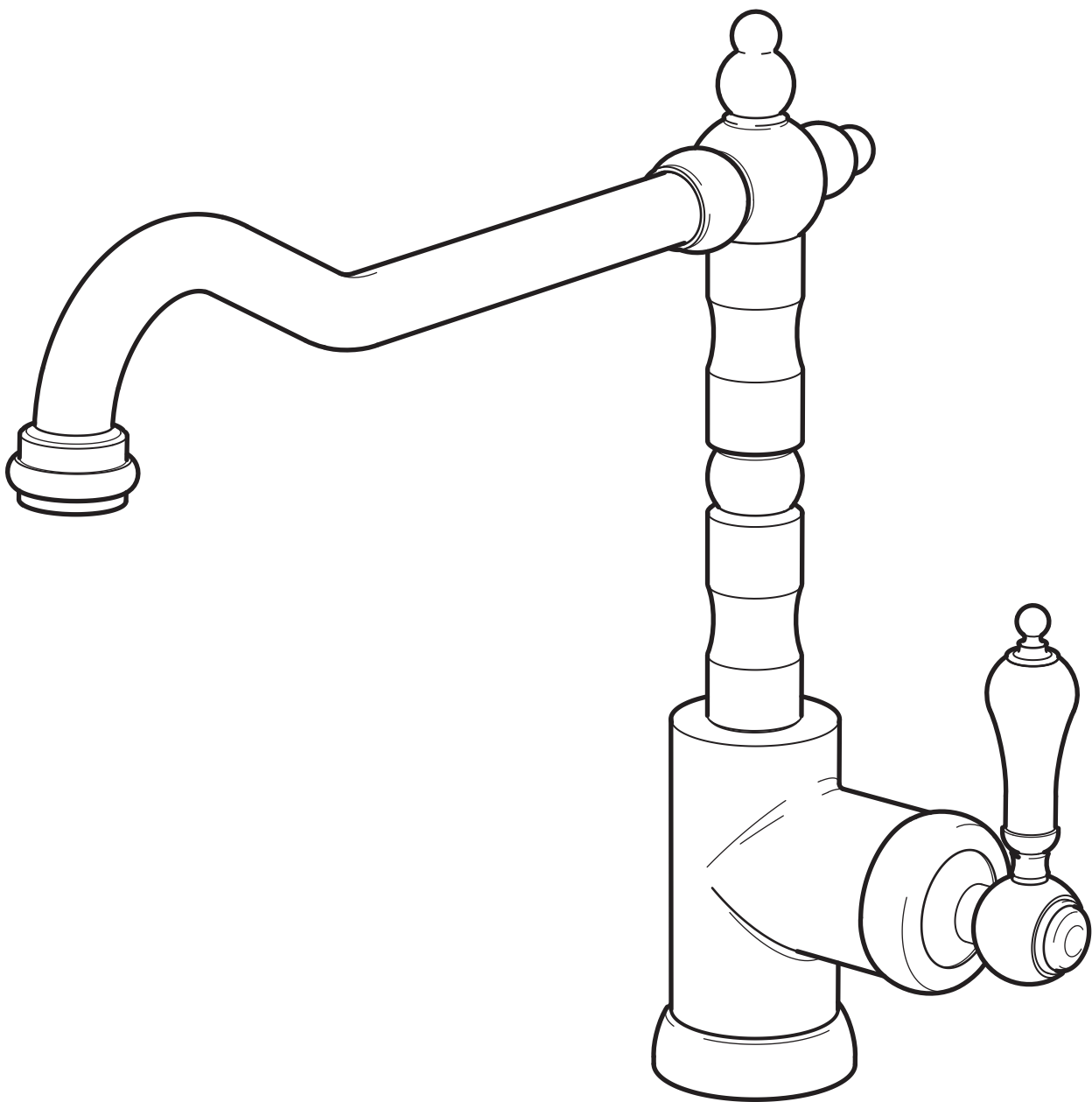


GLITTRAN



Design and Quality
IKEA of Sweden

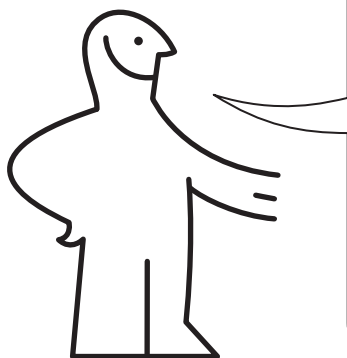


English

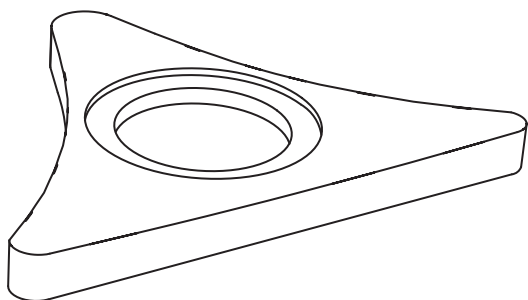
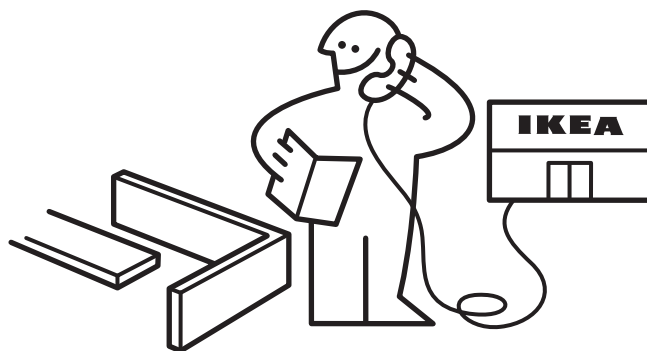
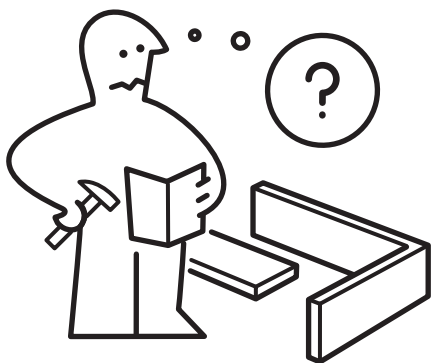
Installation must be performed in compliance with current local construction and plumbing regulations. If in doubt, contact a professional.

English

Switch off main shut-off valve before changing mixer tap.



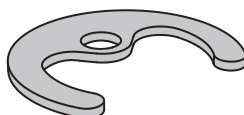
2x



120087



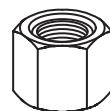
120143



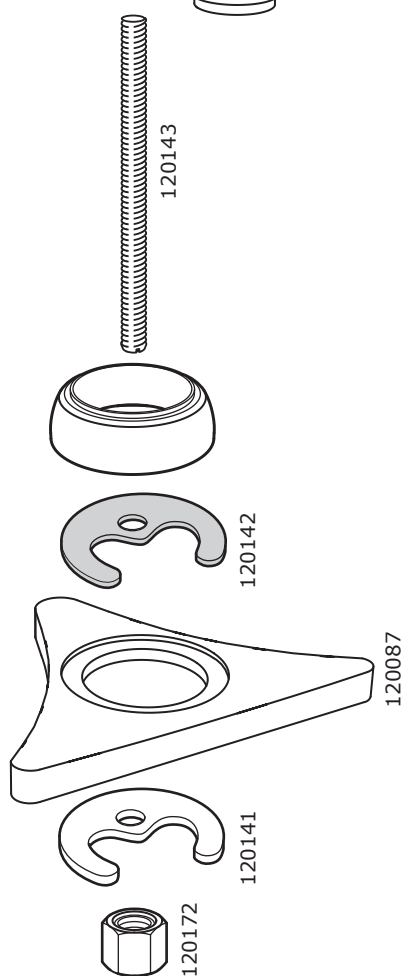
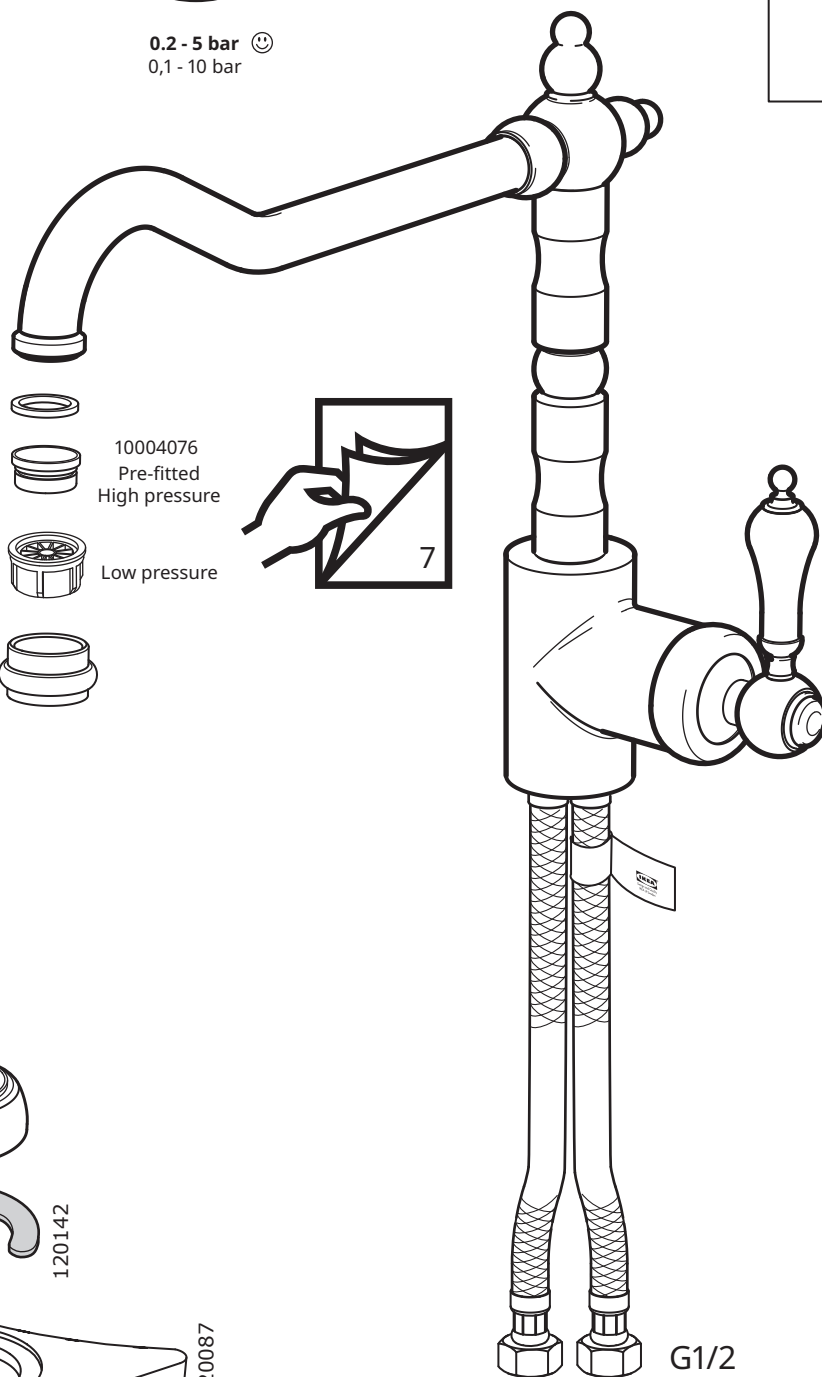
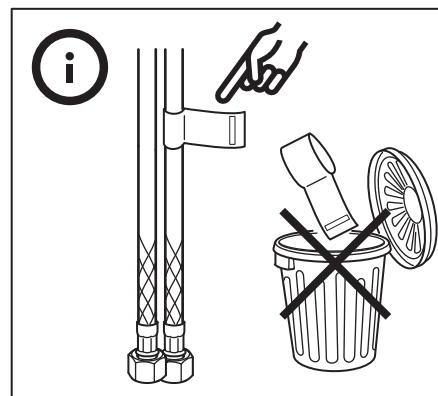
120142



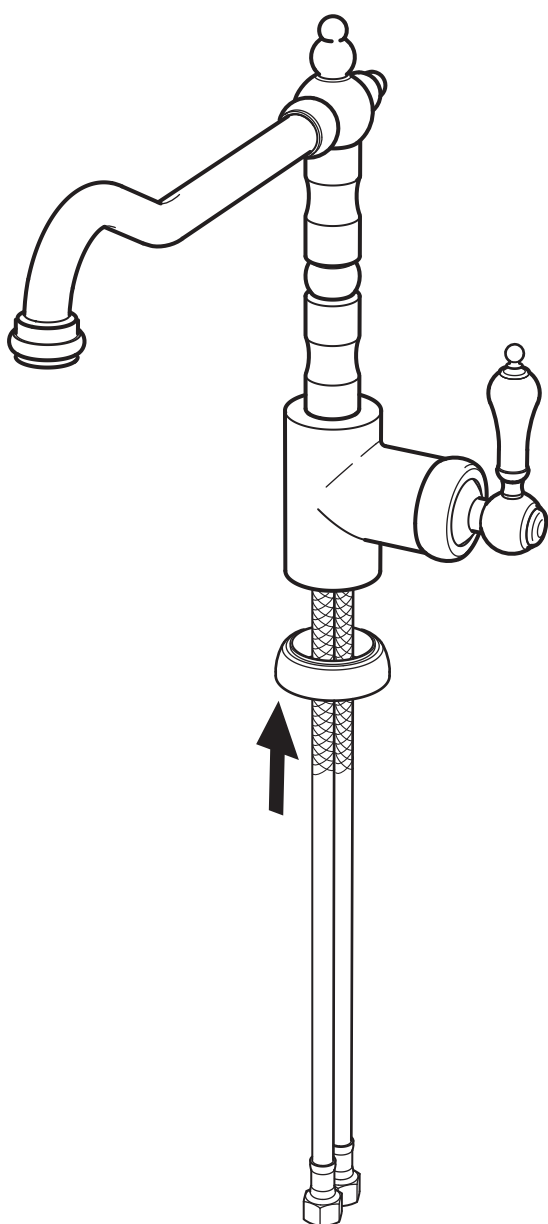
120141



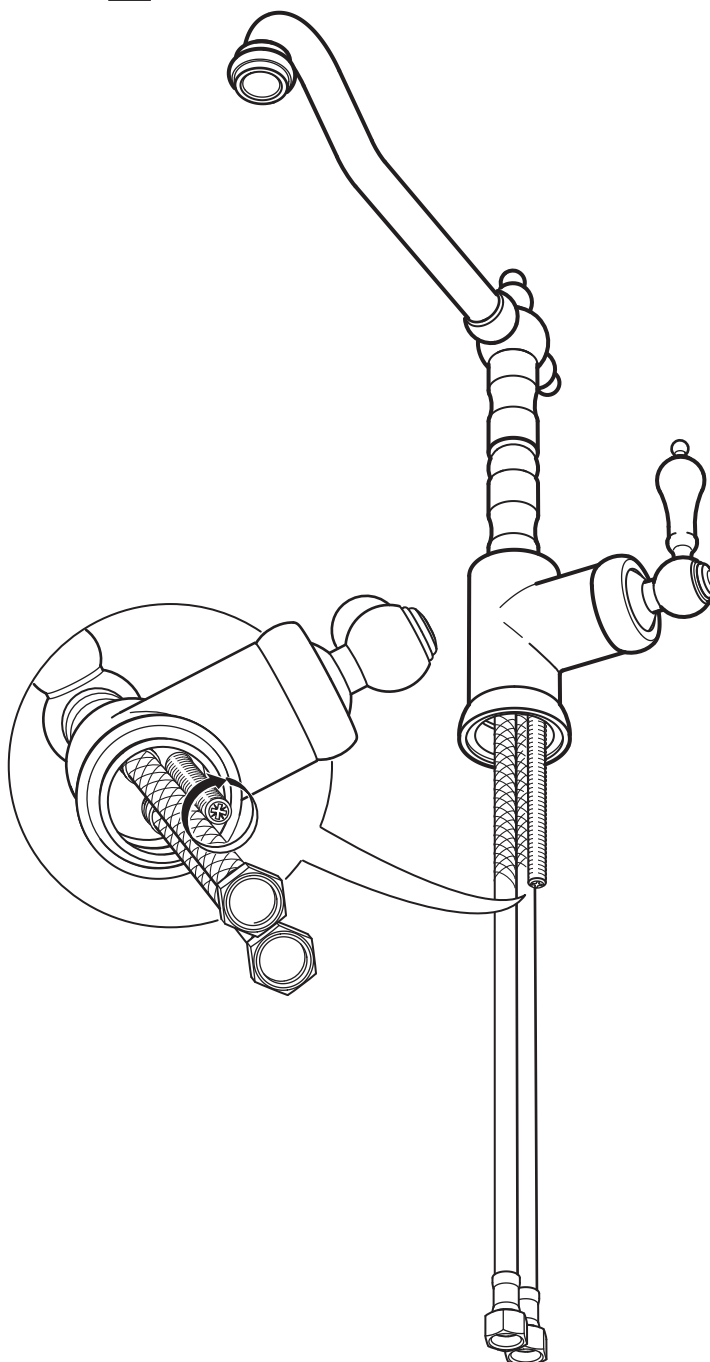
120172



1



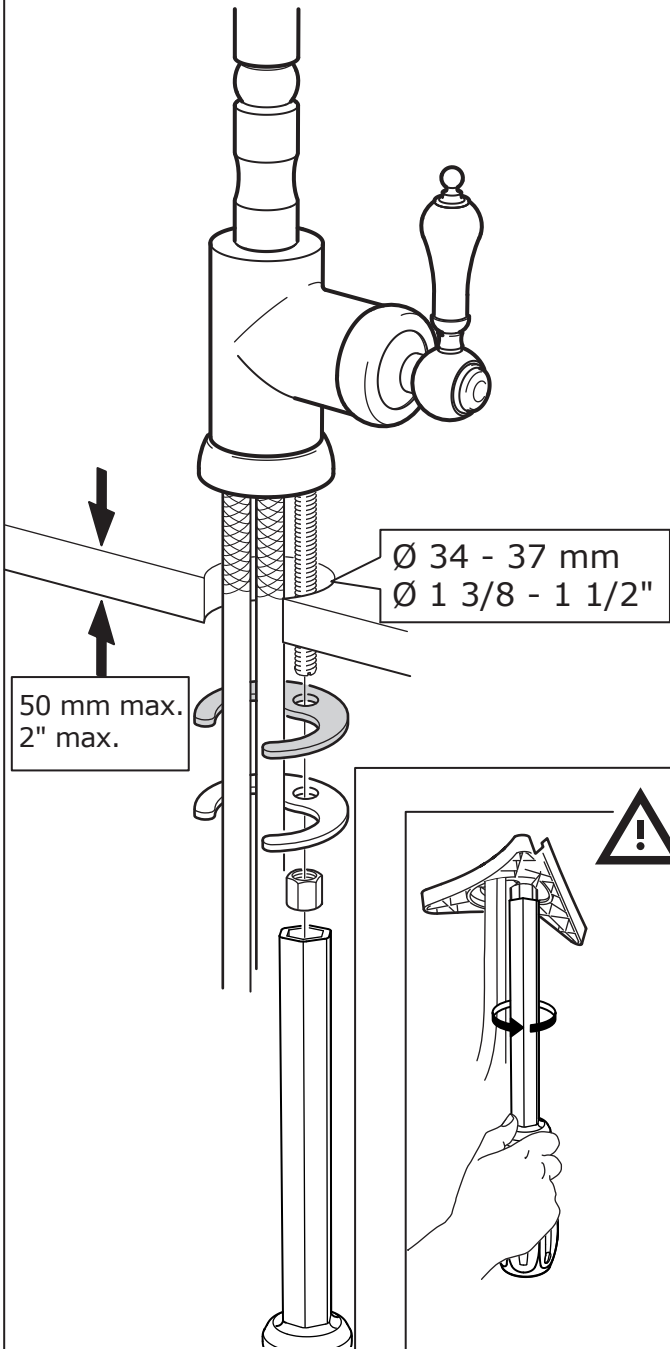
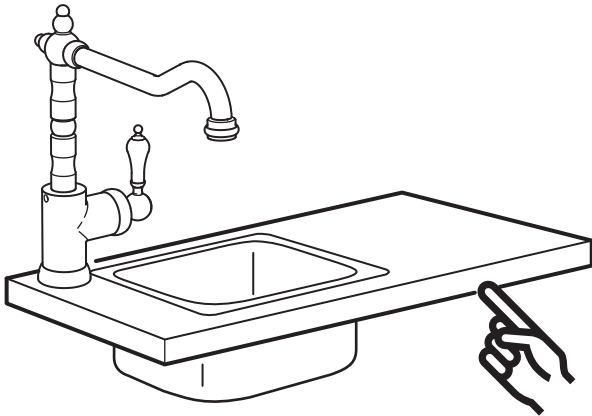
2



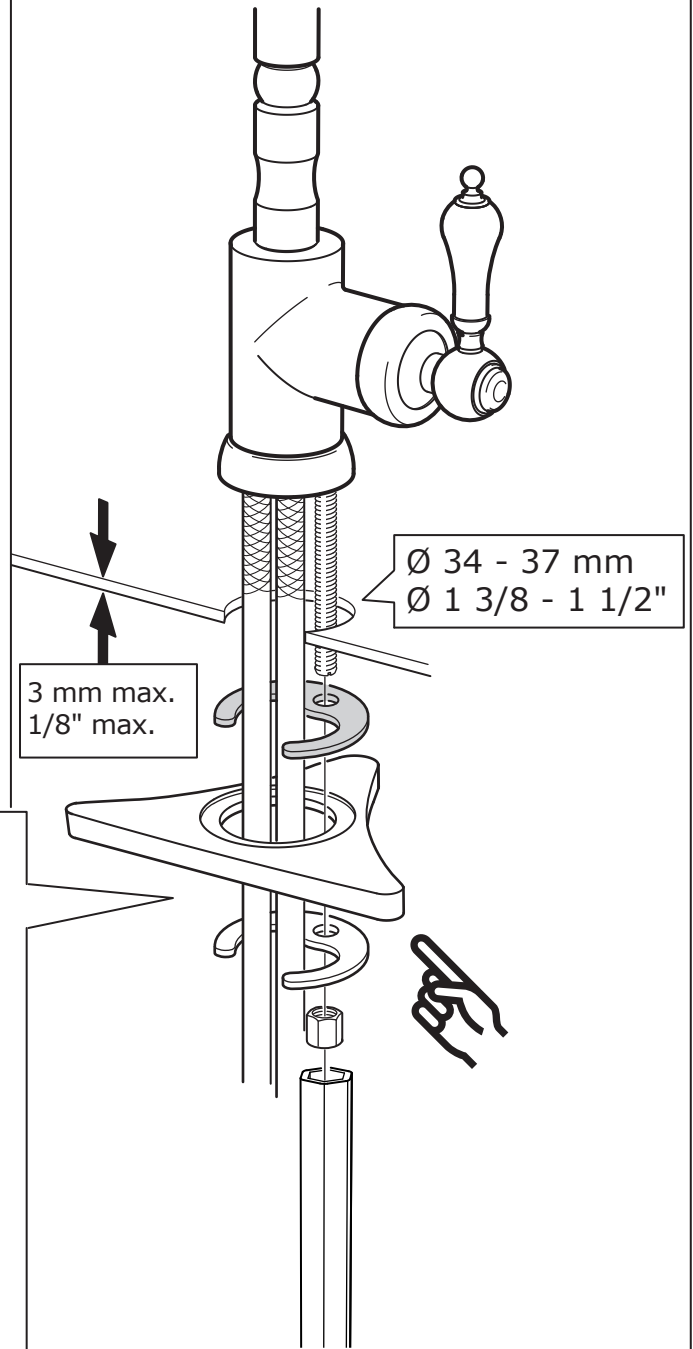
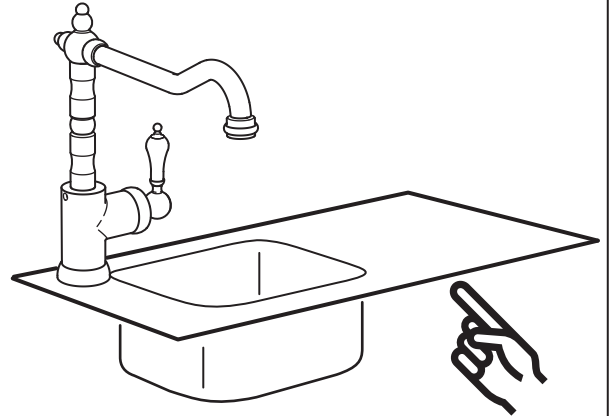
English

Seal the open surfaces with silicone to prevent water from penetrating the worktop upon any leaks. Silicone is not included.

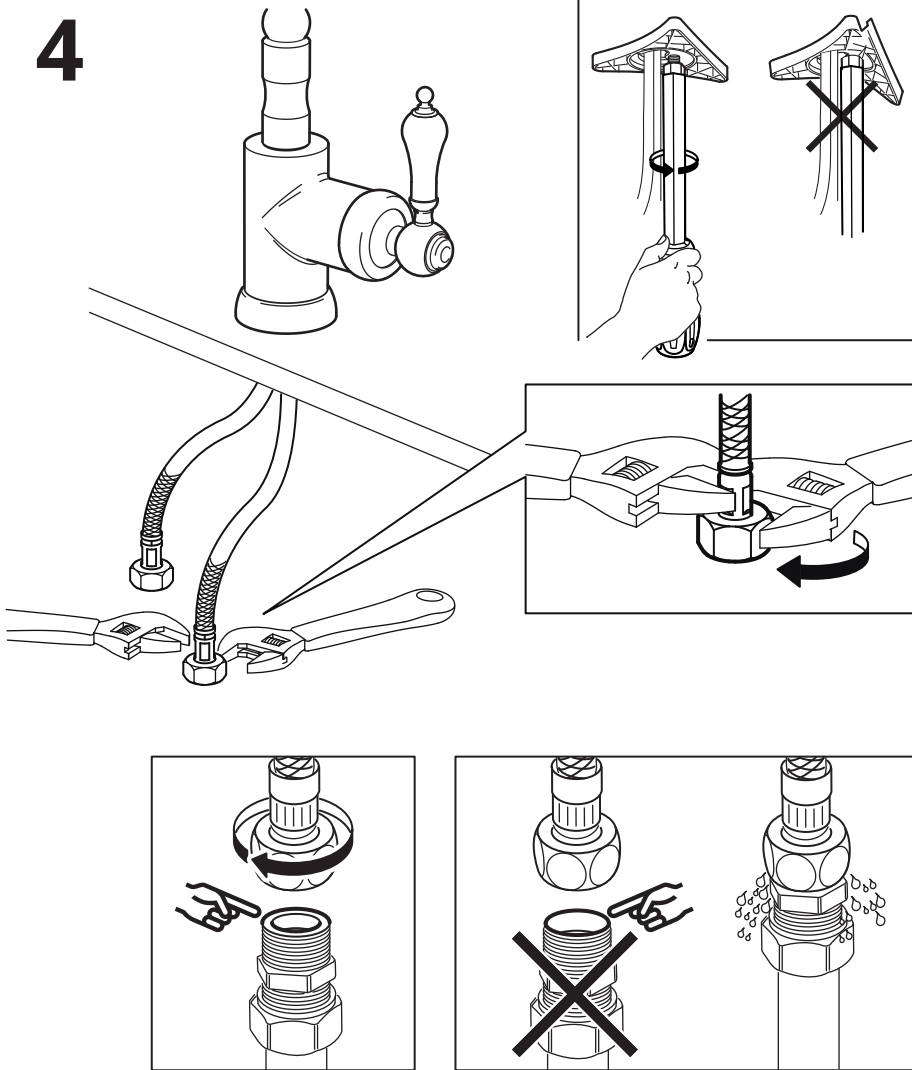
3



3

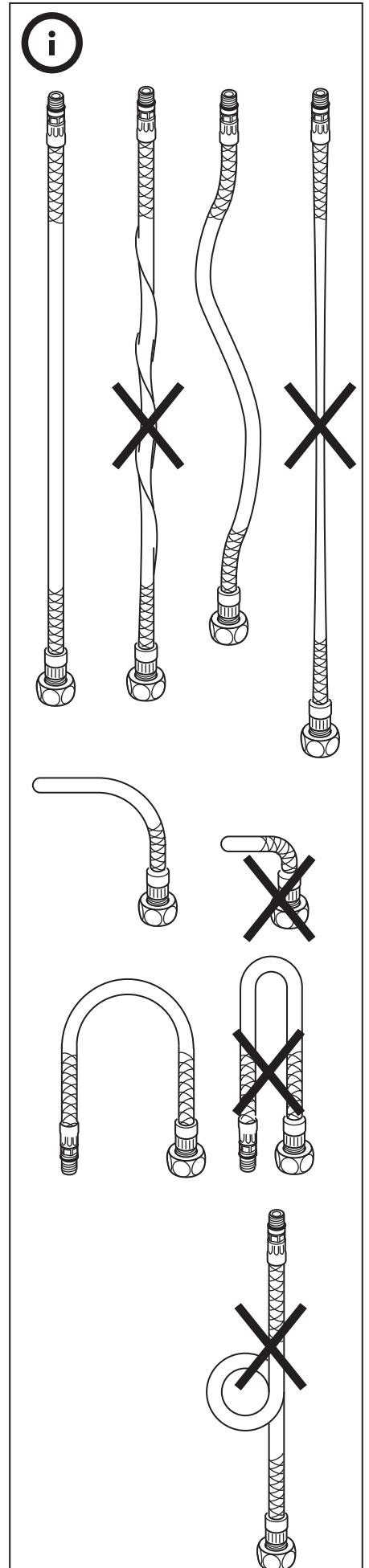


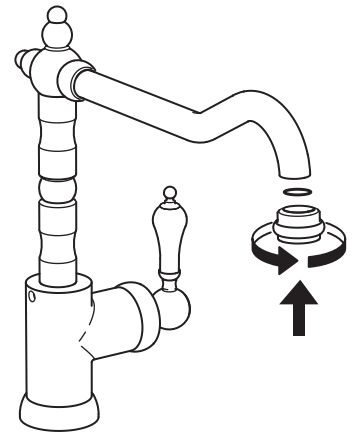
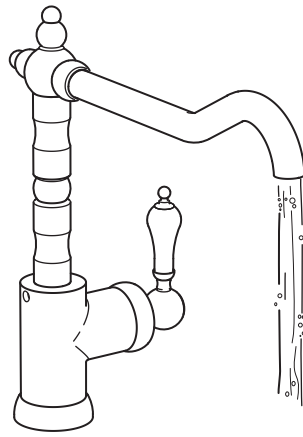
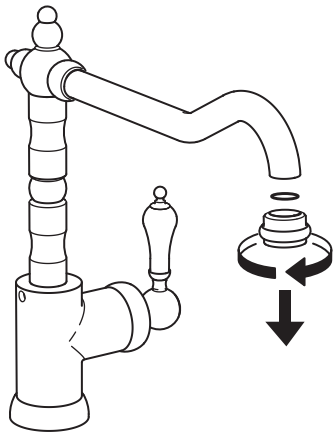
4



English

IMPORTANT! Do not tighten too hard: this can damage hoses/pipes and washers.





English

Before use: Unscrew the Aerator/Flow Guide with a coin and allow the water to run freely for a few minutes. Then screw the Aerator/Flow Guide back in place up to the stop DO NOT OVER TIGHTEN.



10004076
Pre-fitted
High pressure



Low pressure



English

Check at regular intervals to make sure that the installation is not leaking.

