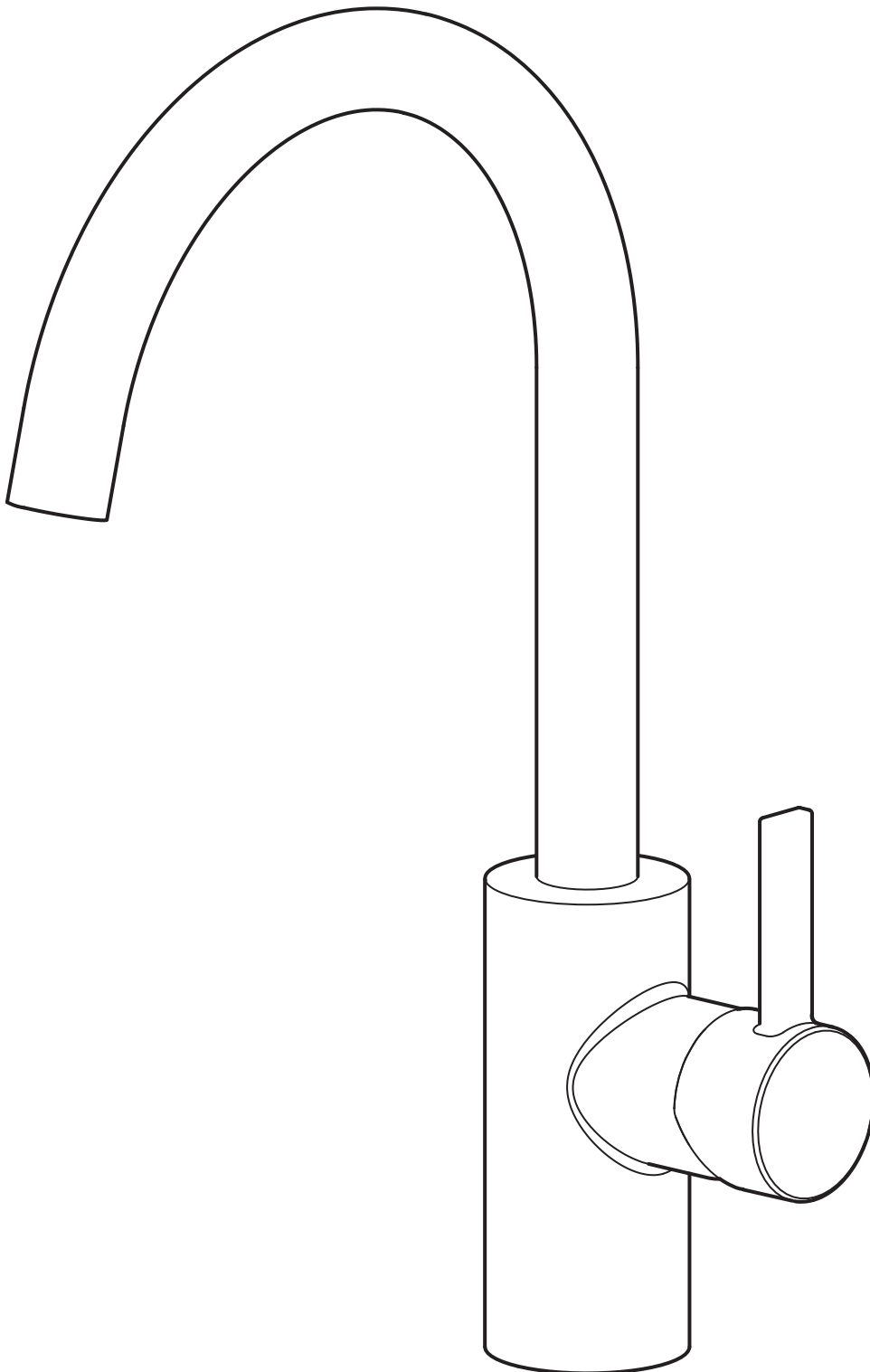


# DELSJÖN



Design and Quality  
IKEA of Sweden



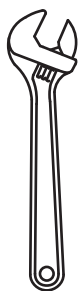
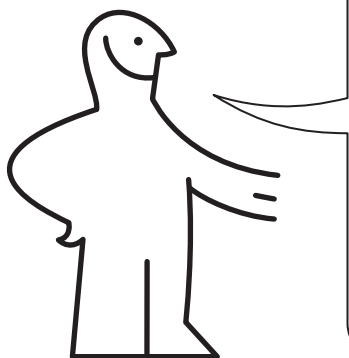
### English

Installation must be performed in compliance with current local construction and plumbing regulations. If in doubt, contact a professional.

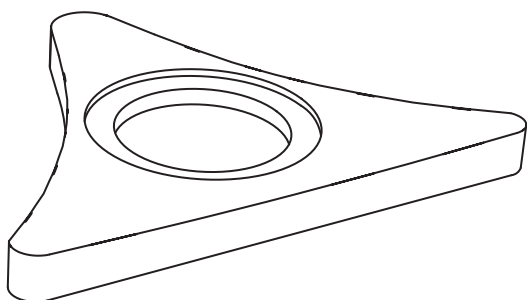
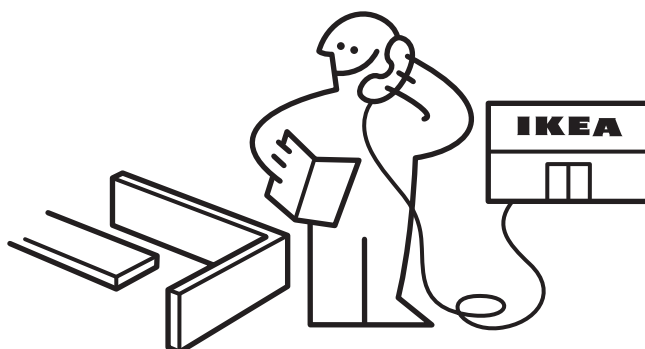
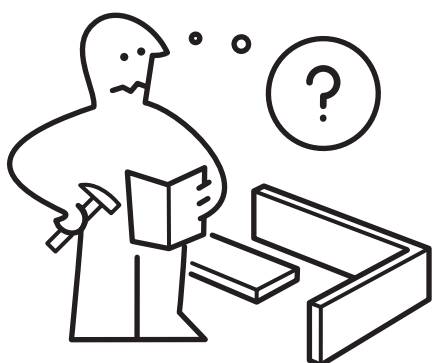


### English

Switch off main shut-off valve before changing mixer tap.



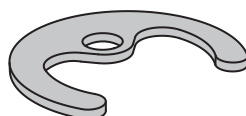
2x



120087



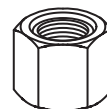
120143



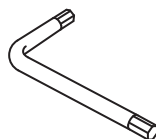
120142



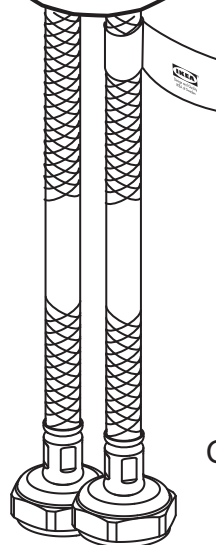
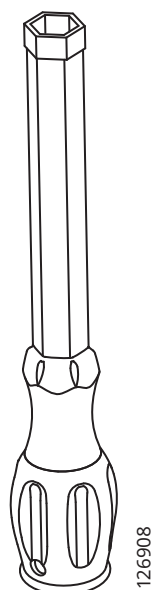
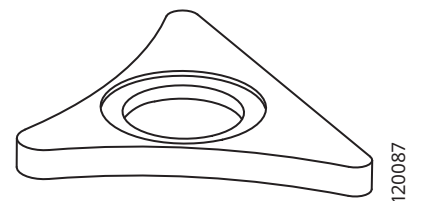
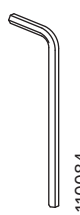
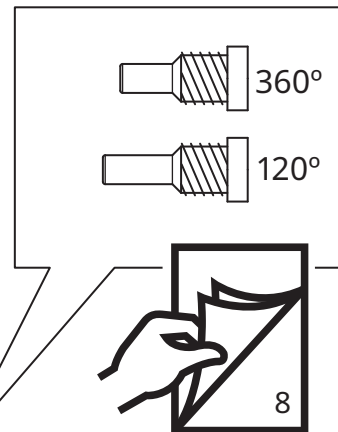
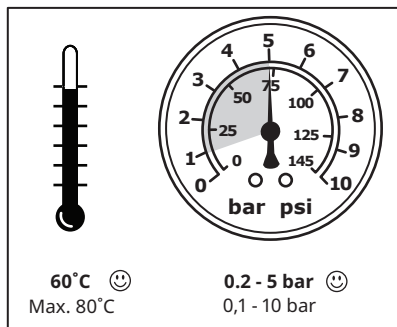
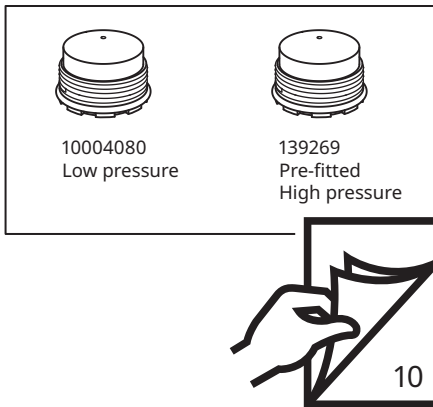
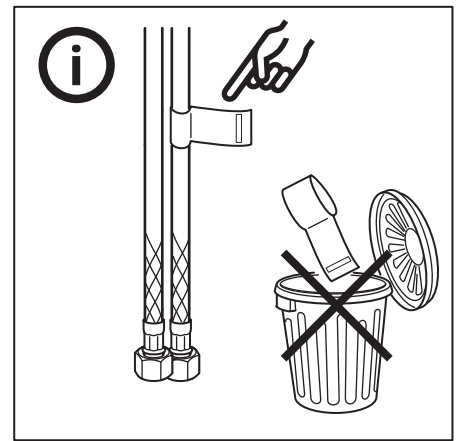
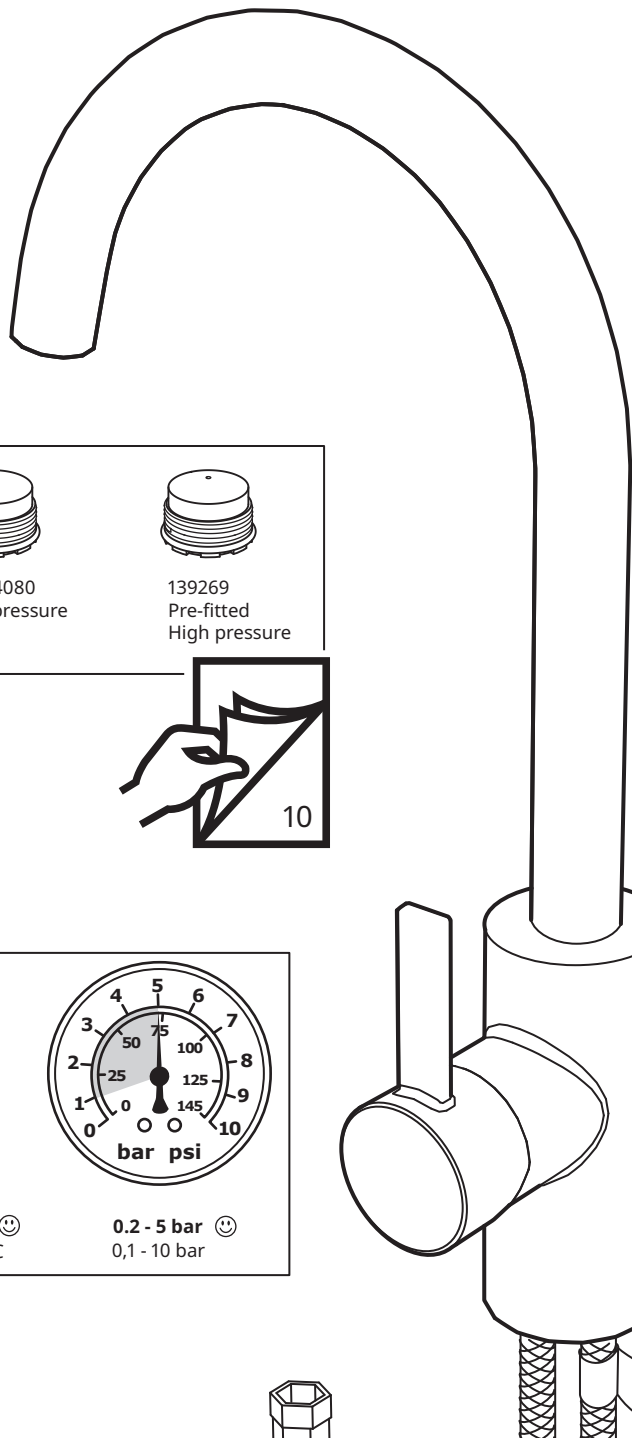
120141



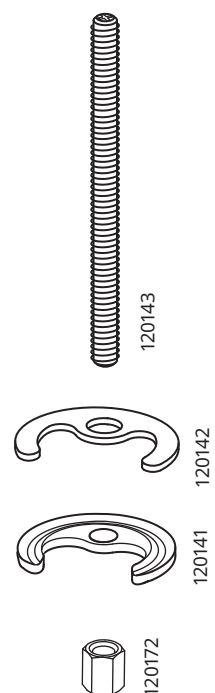
120172



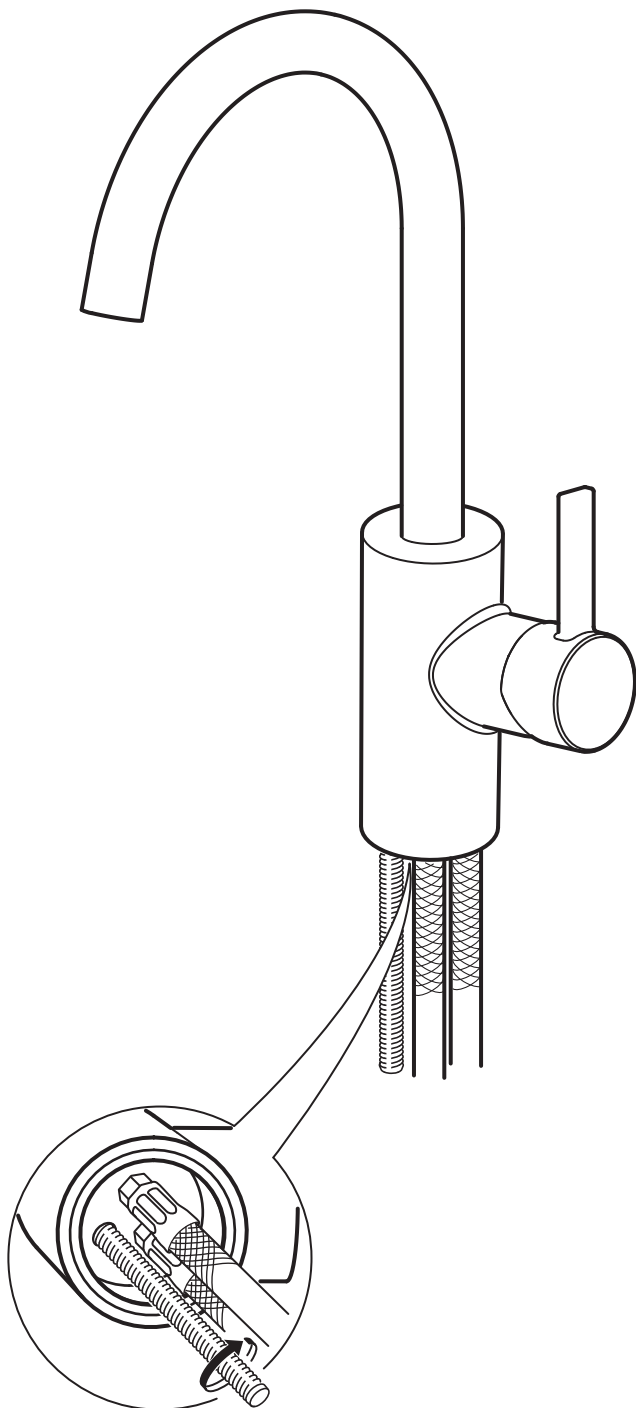
110084



G1/2



1

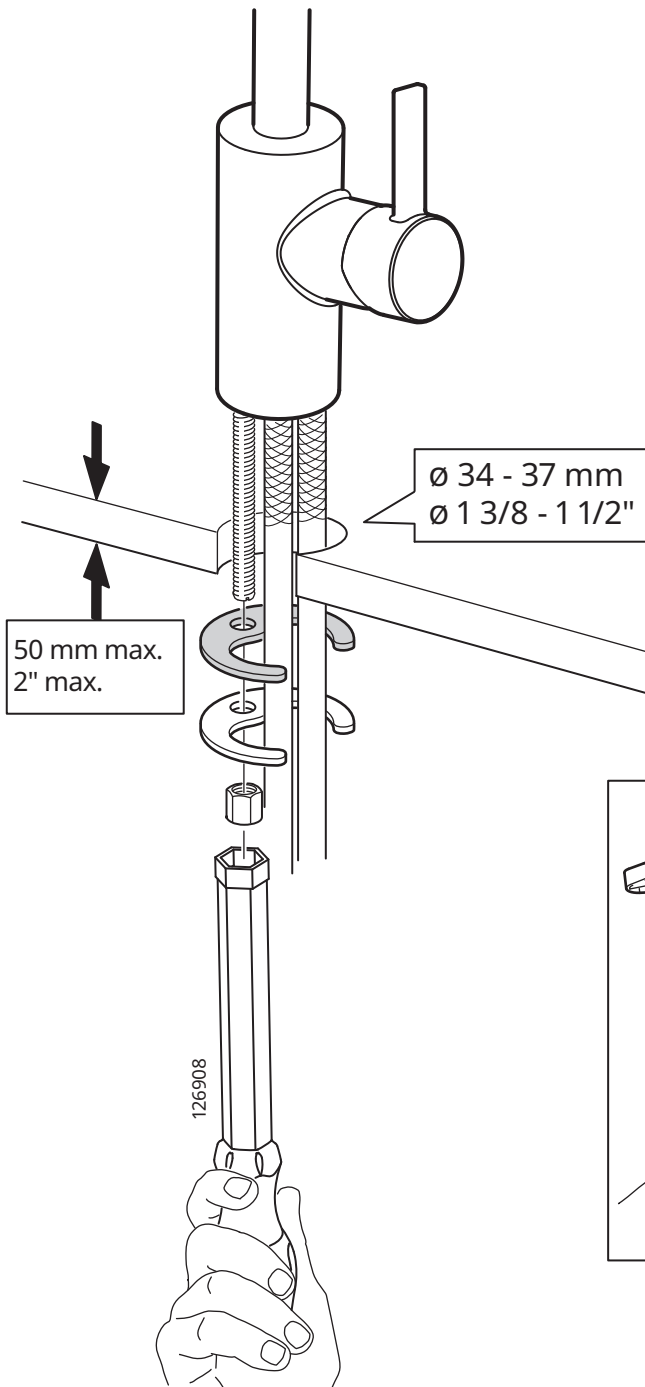
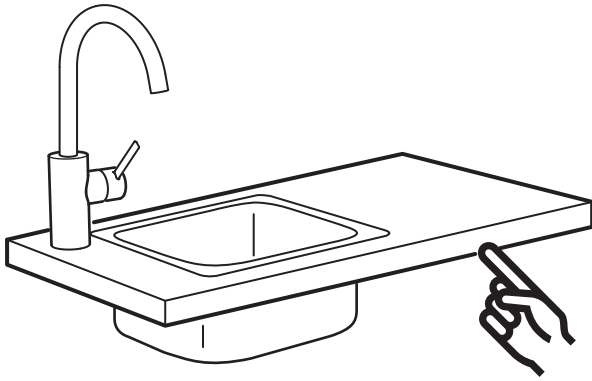




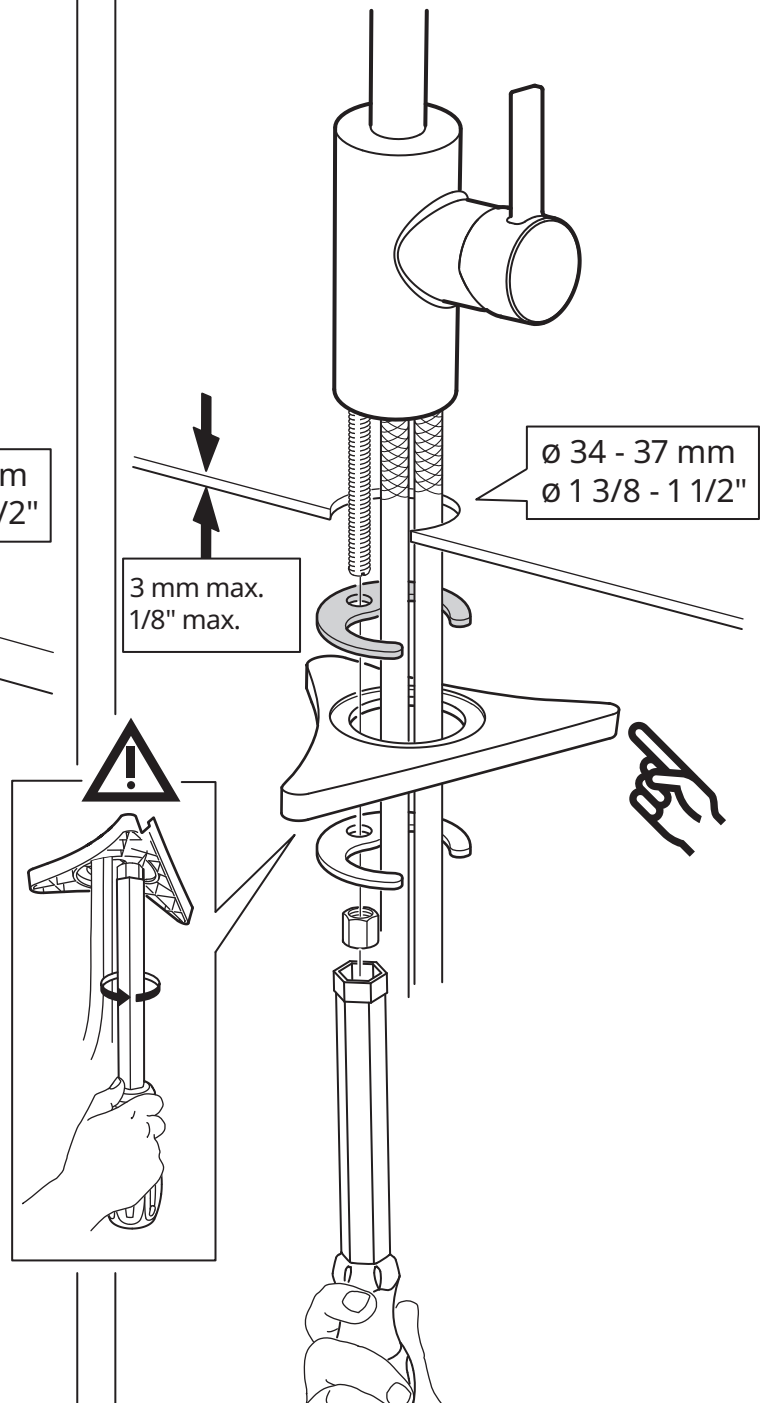
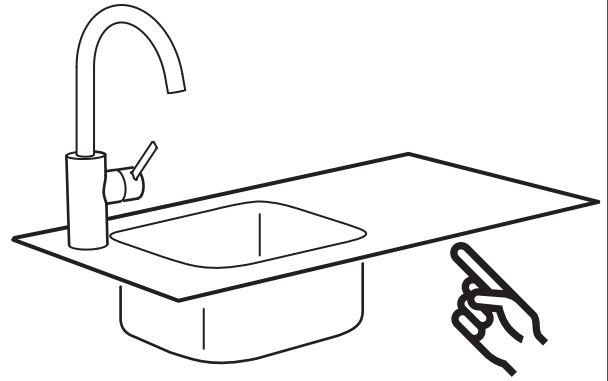
## English

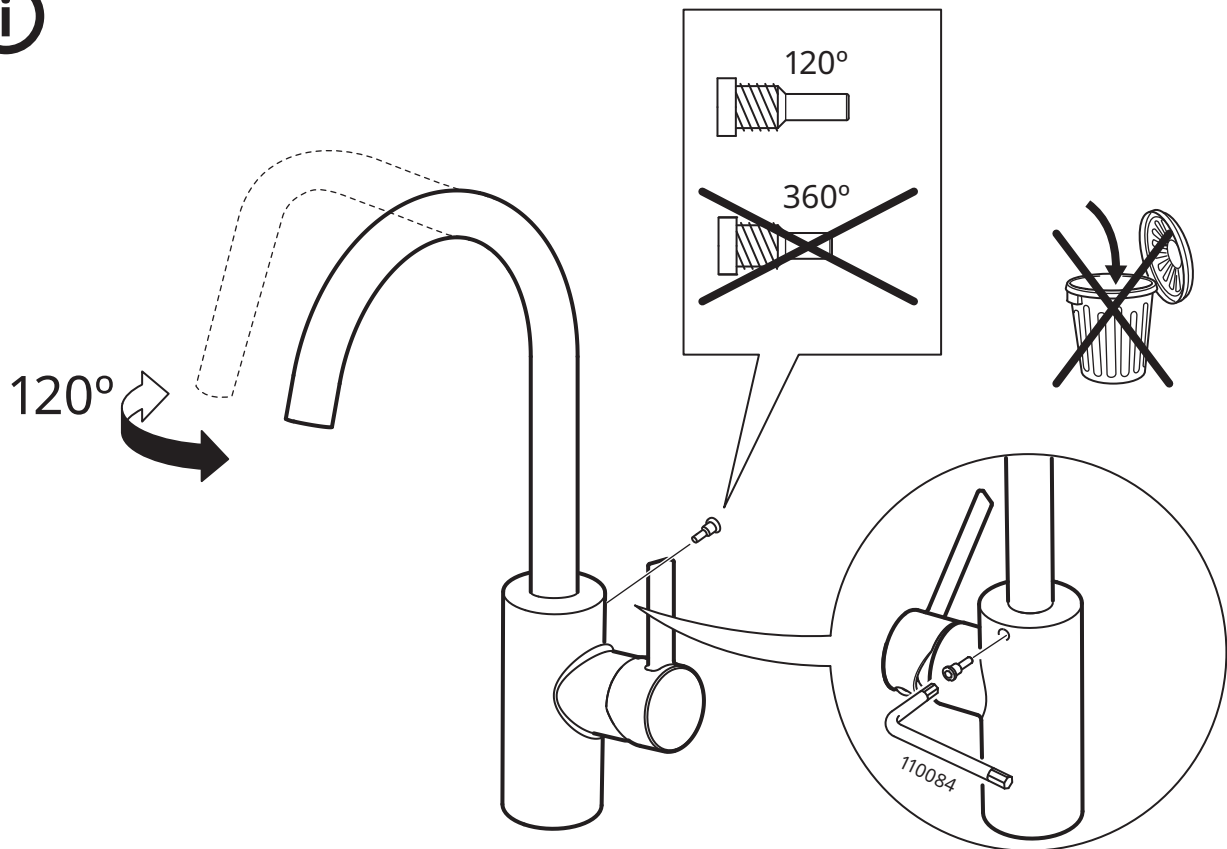
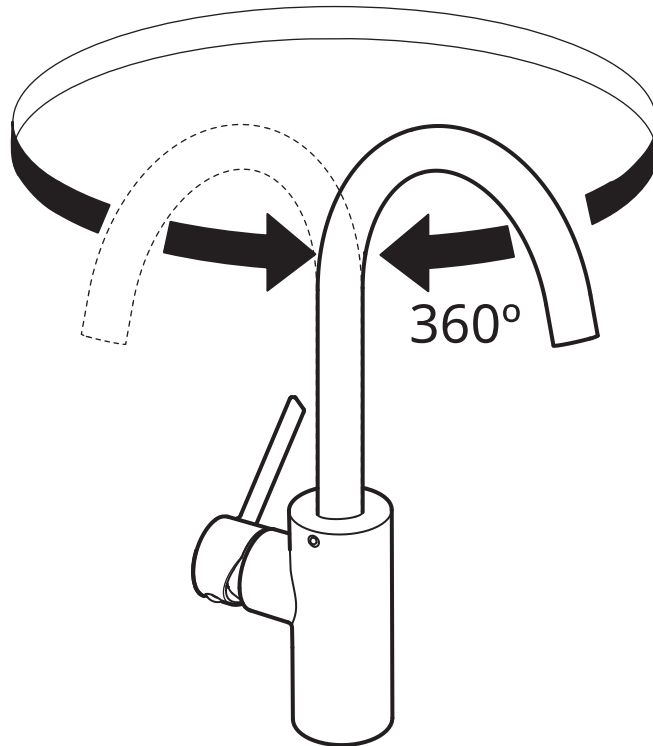
Seal the open surfaces with silicone to prevent water from penetrating the worktop upon any leaks. Silicone is not included.

2



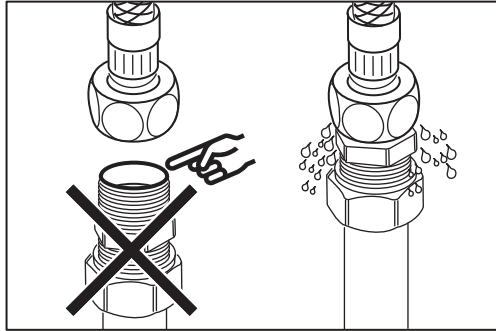
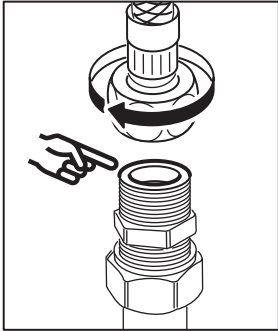
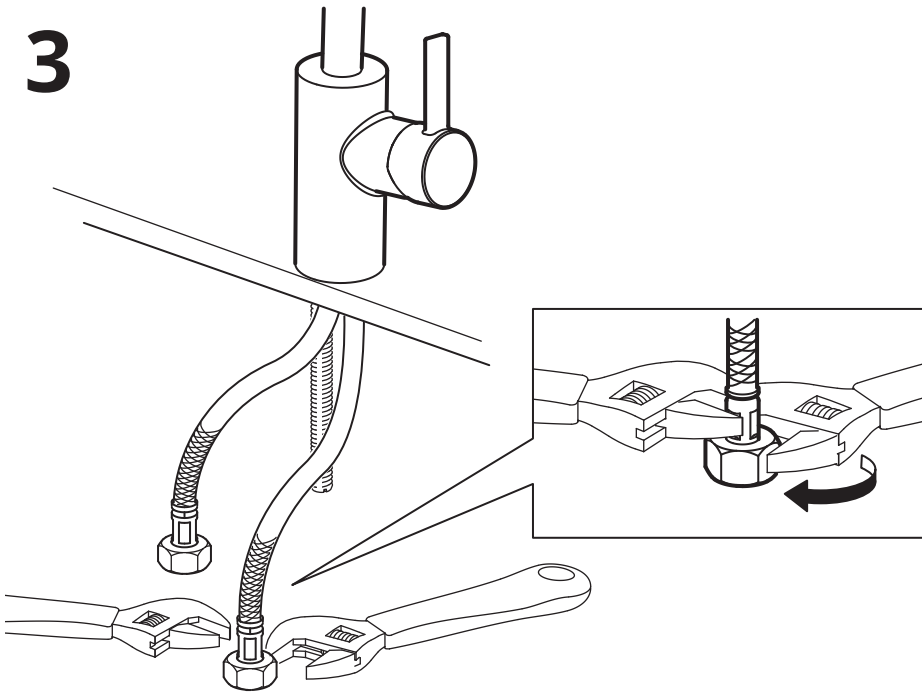
2





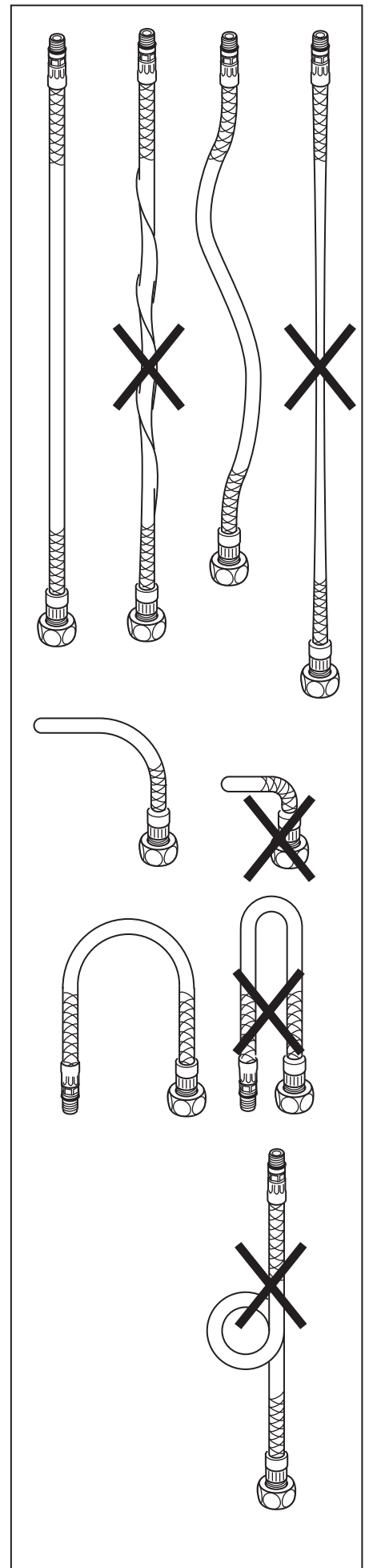


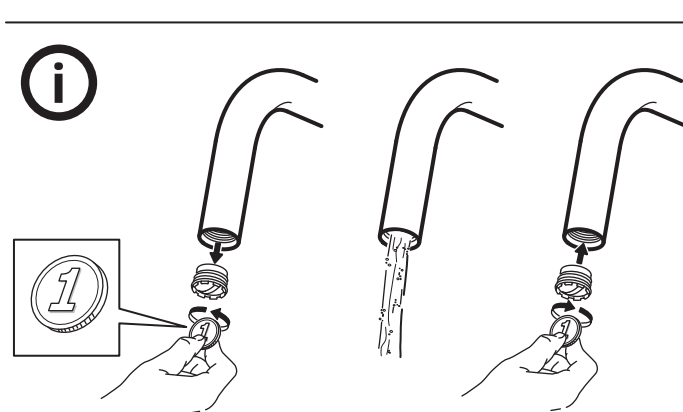
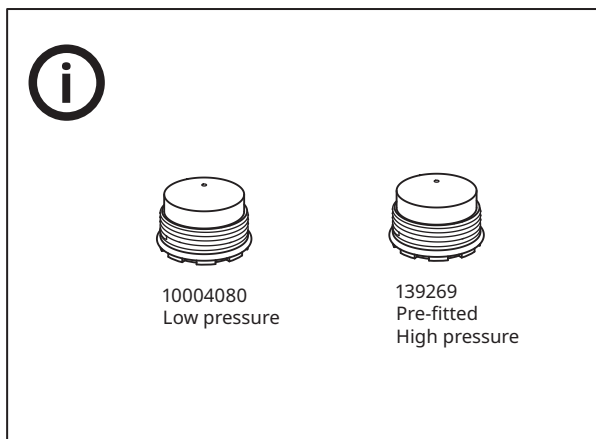
# 3



## English

IMPORTANT! Do not tighten too hard: this can damage hoses/pipes and washers.





## English

Before use: Unscrew the Aerator/Flow Guide with a coin and allow the water to run freely for a few minutes. Then screw the Aerator/Flow Guide back in place up to the stop DO NOT OVER TIGHTEN.



## English

Check at regular intervals to make sure that the installation is not leaking.

