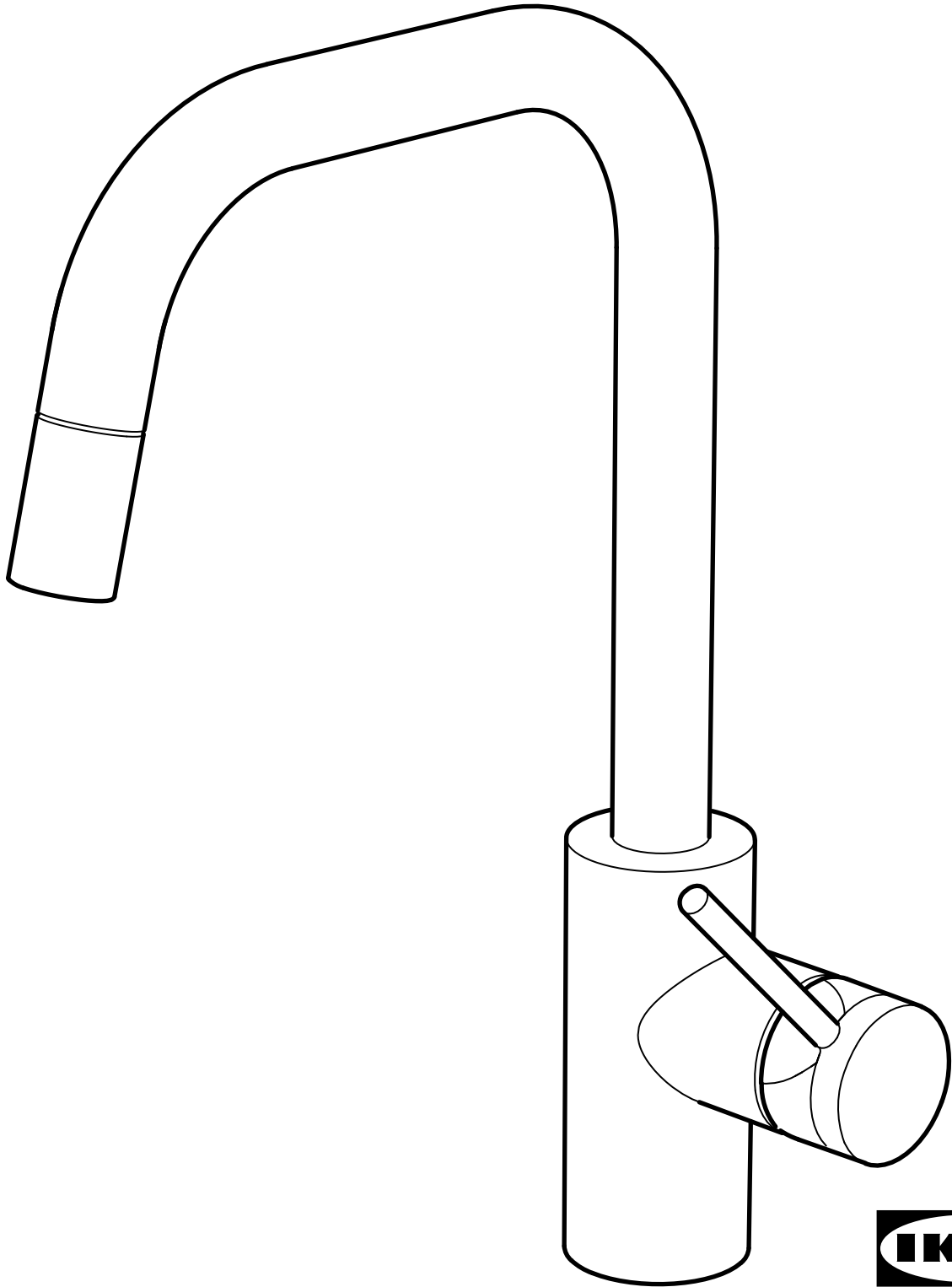


# ÄLMAREN



Design and Quality  
IKEA of Sweden

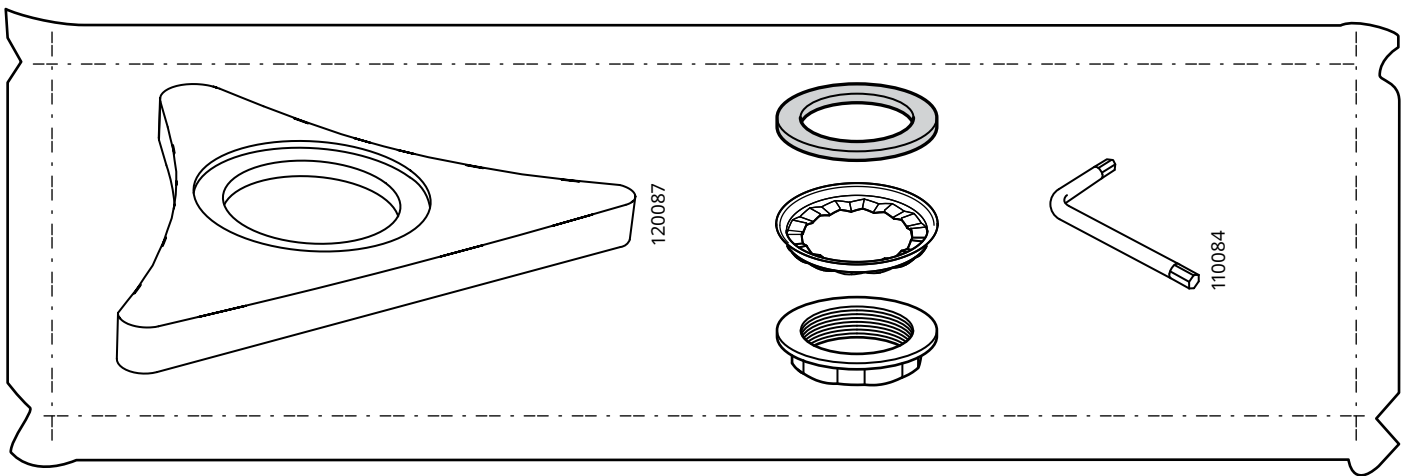
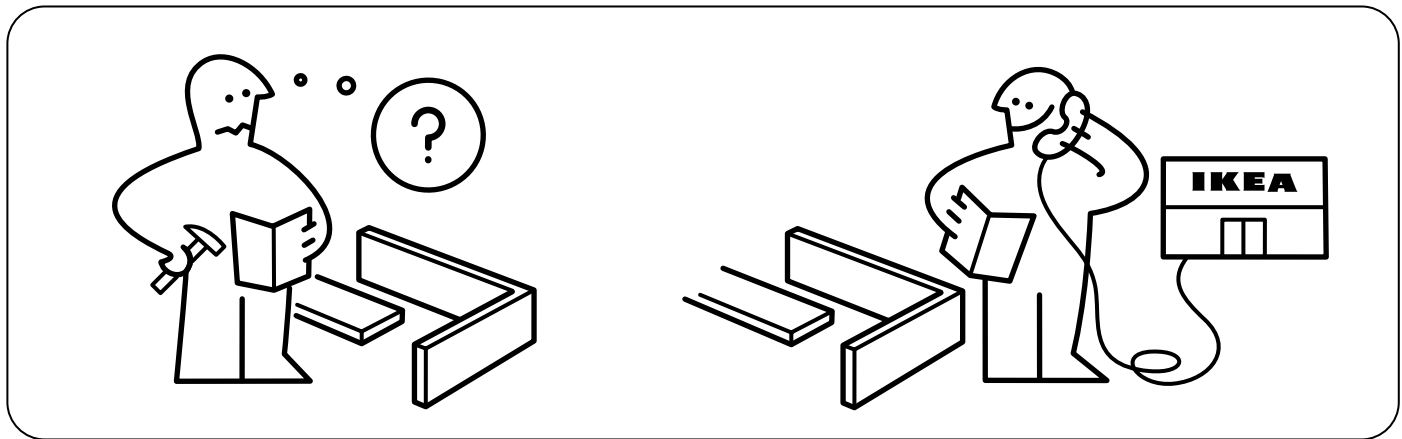
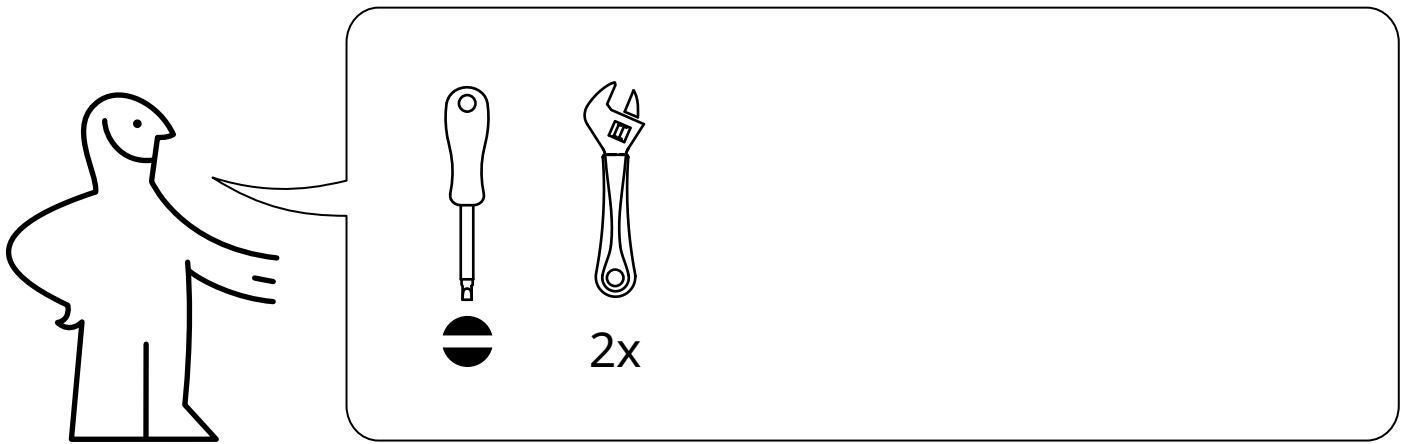
**English**

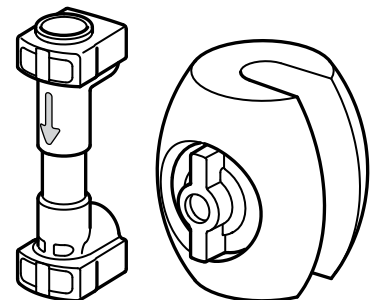
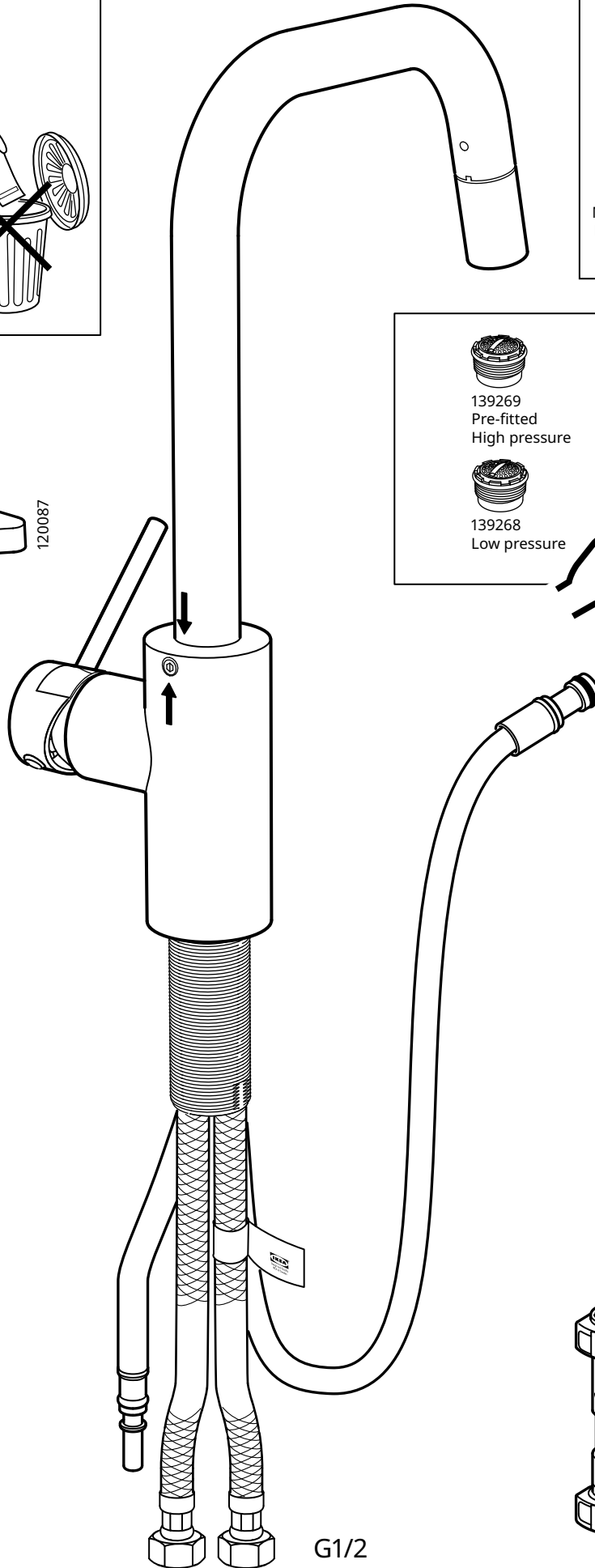
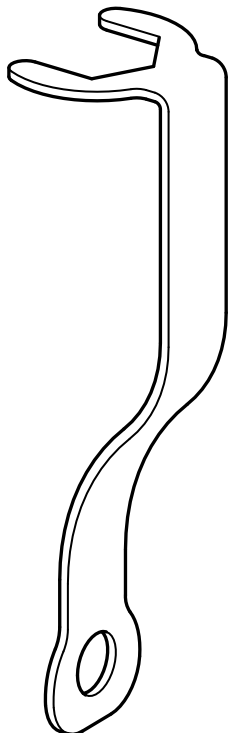
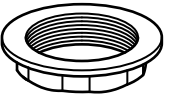
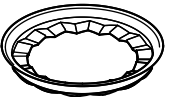
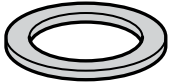
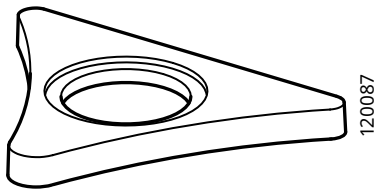
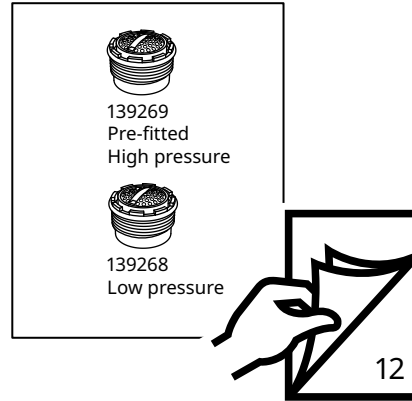
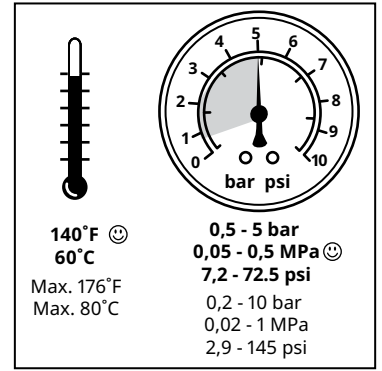
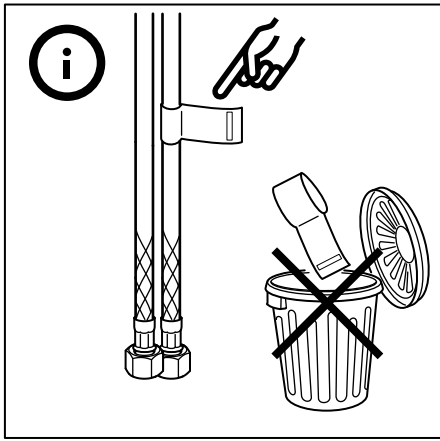
Installation must be performed in compliance with current local construction and plumbing regulations. If in doubt, contact a professional.

---

**English**

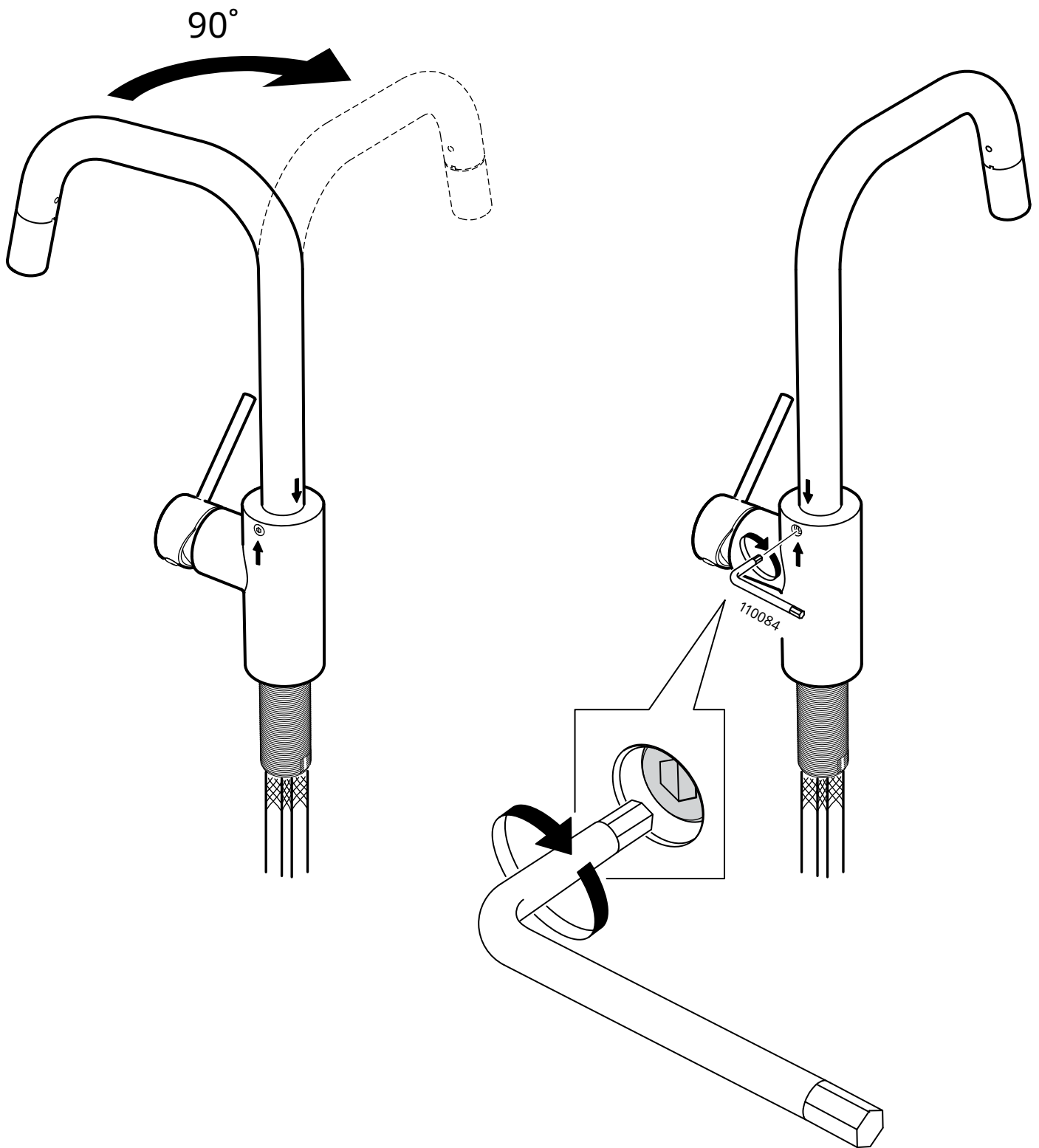
Switch off main shut-off valve before changing mixer tap.





1

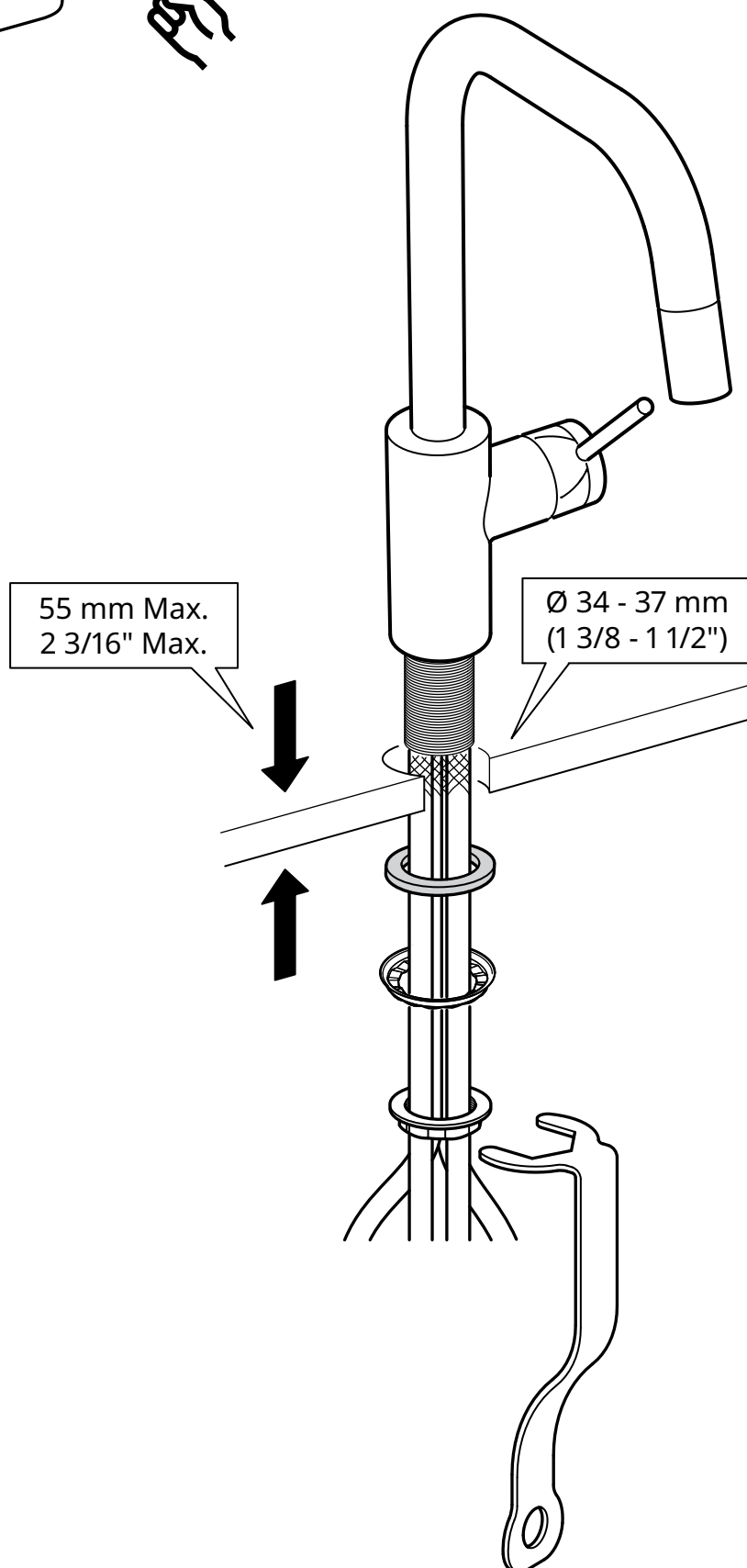
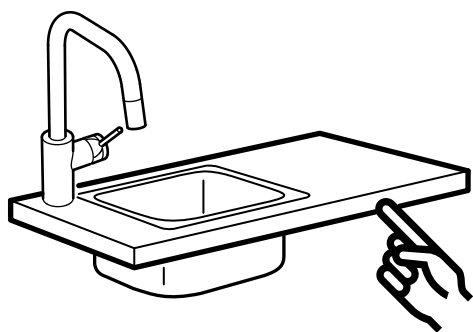
2



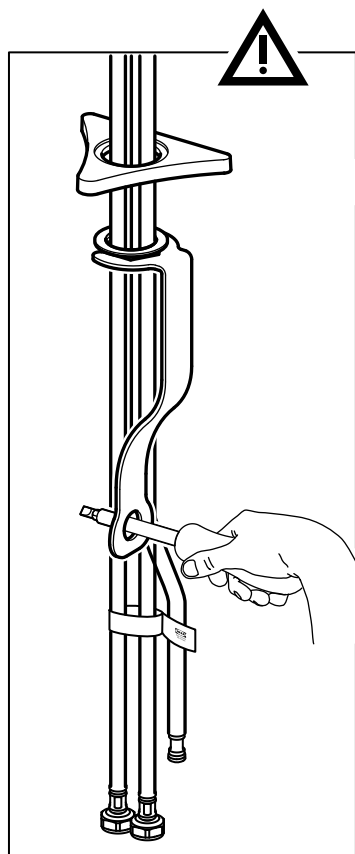
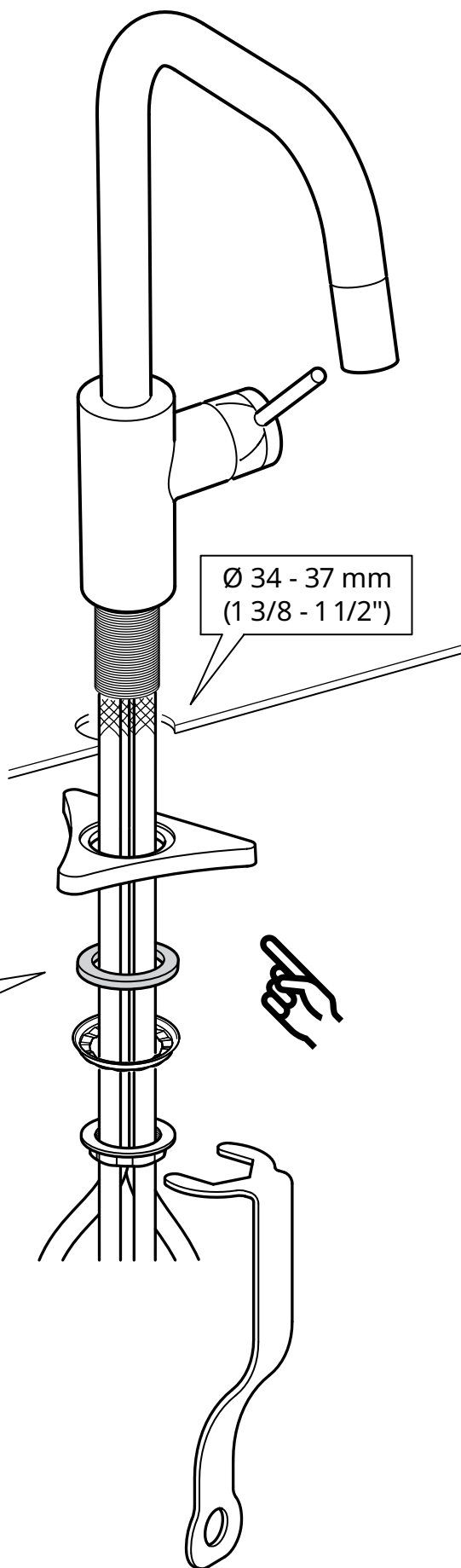
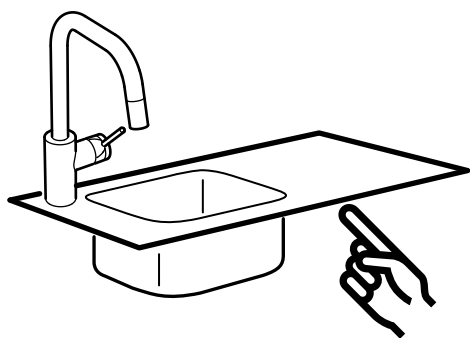
**English**

Seal the open surfaces with silicone to prevent water from penetrating the worktop upon any leaks. Silicone is not included.

3

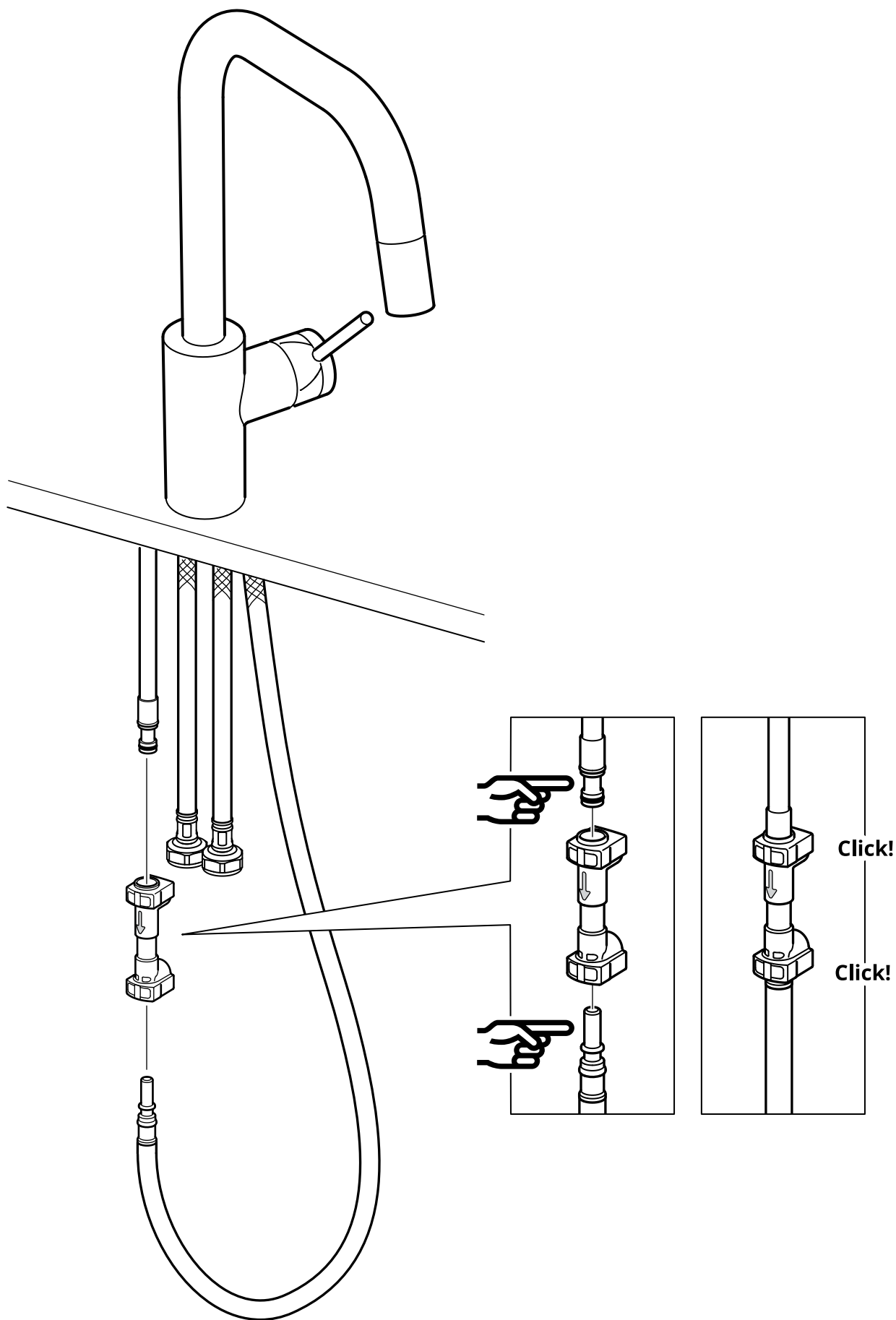


3

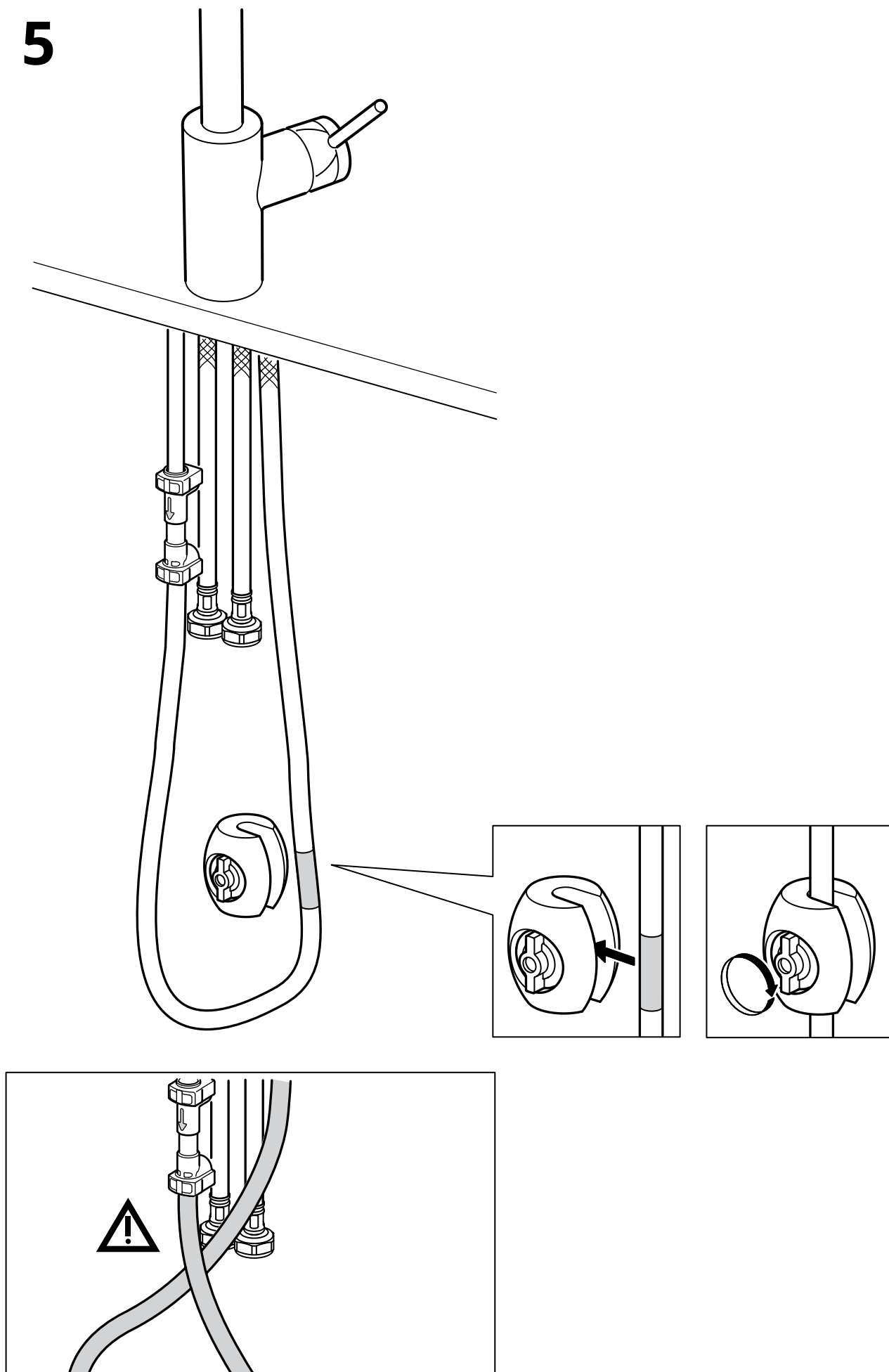




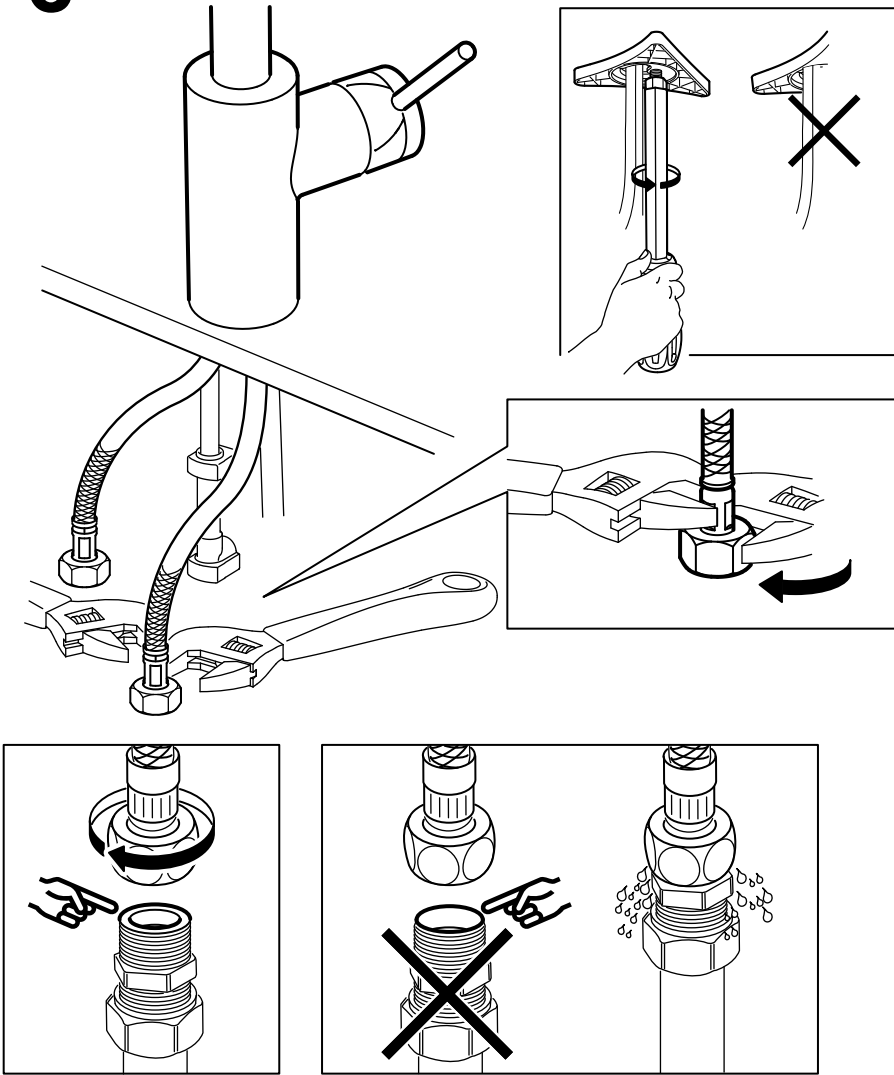
4



5

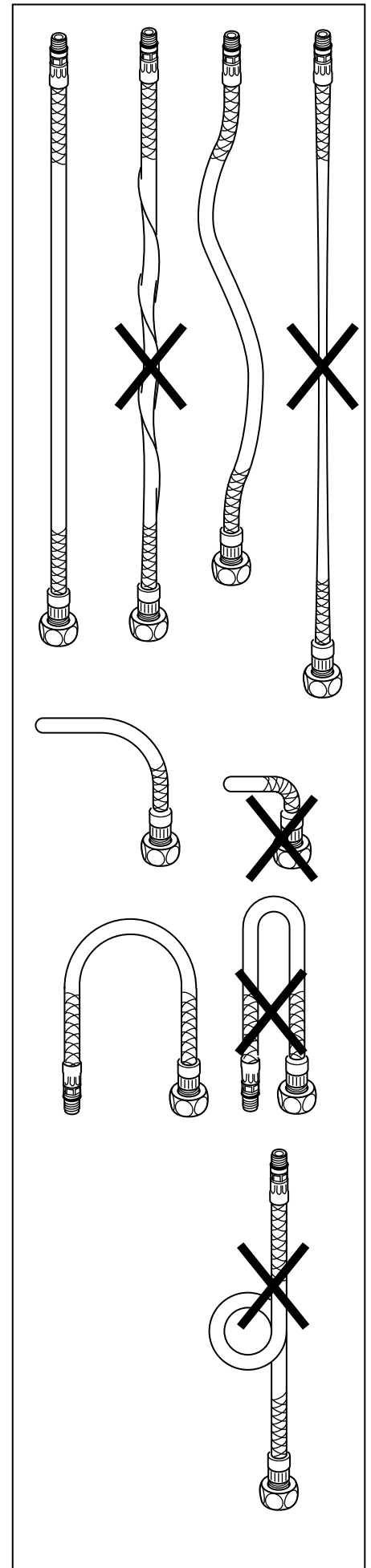


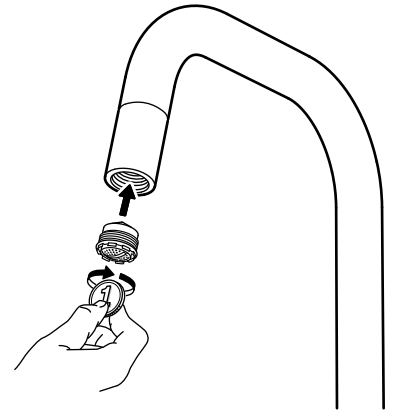
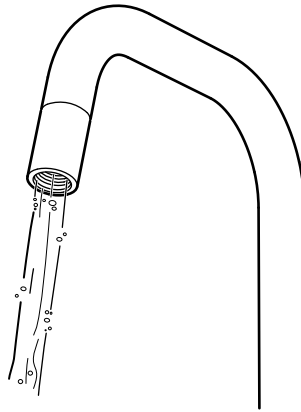
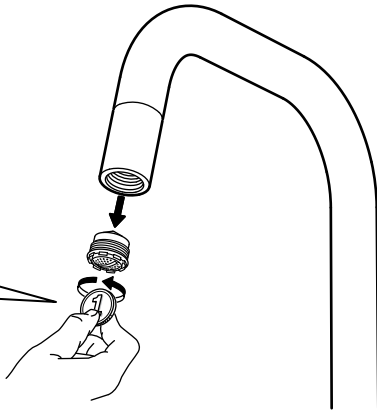
6



English

IMPORTANT! Do not tighten too hard: this can damage hoses/pipes and washers.





#### English

Before use: Unscrew the Aerator/Flow Guide with a coin and allow the water to run freely for a few minutes. Then screw the Aerator/Flow Guide back in place up to the stop DO NOT OVER TIGHTEN.



#### English

Check at regular intervals to make sure that the installation is not leaking.



#### English

To comply with UK water regulations, this product shall be installed in accordance with the following:

Inlet supply hoses shall be installed where light is excluded.

Water supplies shall be at reasonably balanced pressures from a common source (e.g. hot and cold supplies both from the same storage or both from a supply pipe). Where the fitting is supplied from unbalanced supplies (e.g. hot and cold supplies from separate sources) an 'Approved' single check valve or some other no less effective backflow prevention device shall be fitted immediately upstream of both hot and cold water inlets.

#### Pull-out taps warning AI text UK

This type of tap will not maintain an appropriate tap gap, because part of the tap assembly (the hose attachment) can fall below the spill over level of the sink. Therefore it must not be directly connected to the drinking water supply without the protection of an appropriate backflow arrangement, as agreed by your local water supplier. If the tap assembly is required to be fed from storage, this tap may require a water pressure higher than that provided by a normal storage gravity fed system (e.g. typical gravity fed system - 0.5 bar). If boosting/pumping of the system is required advance notification to the local water supplier may be required. The tap assembly must only be supplied via a wholesome source of water (hot and cold supplies). It is important to ensure that this tap is connected in accordance with the Water Supply (Water Fittings) Regulations (Byelaws in Scotland).