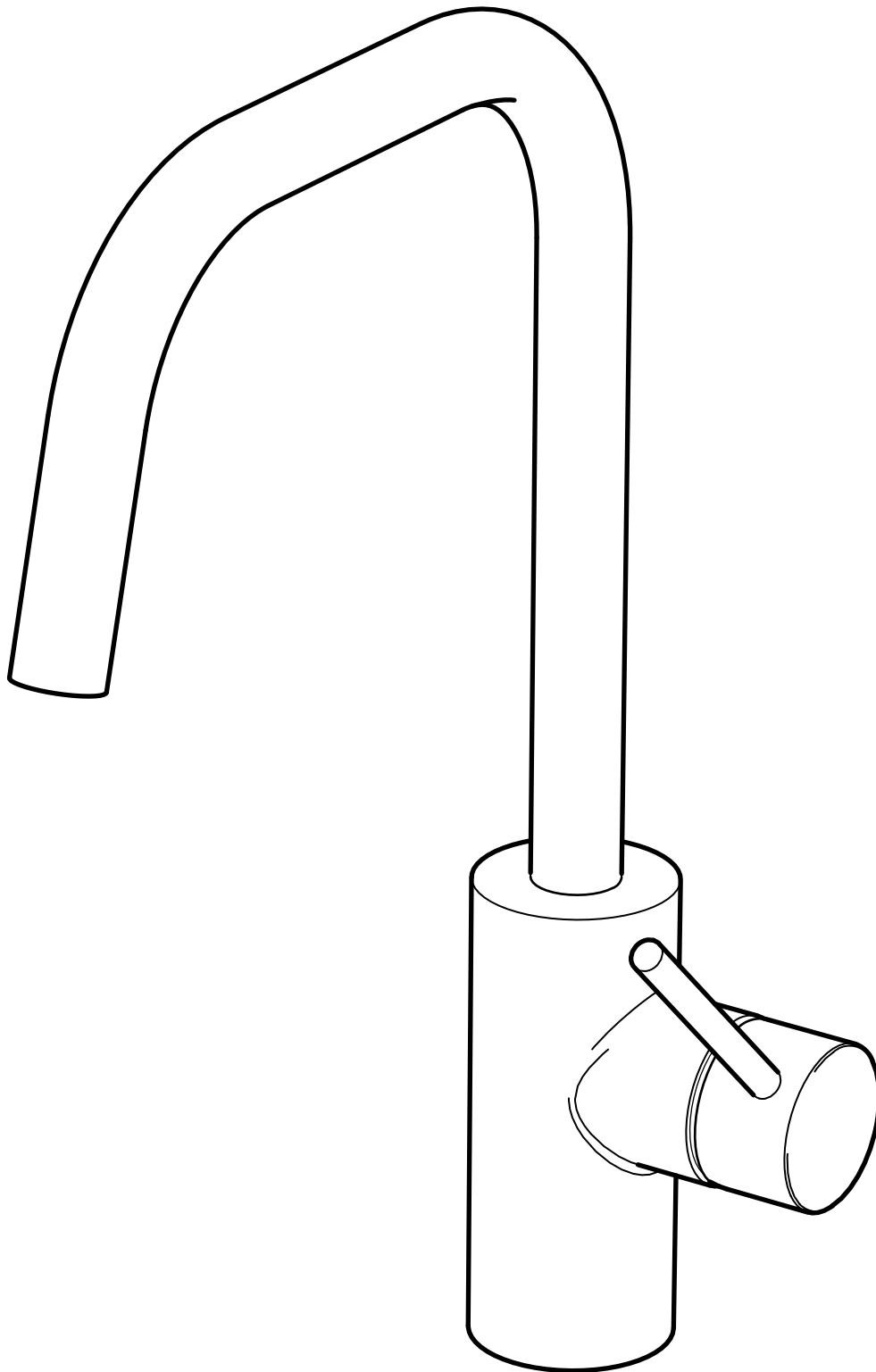


ÄLMAREN



Design and Quality
IKEA of Sweden



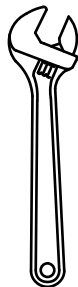
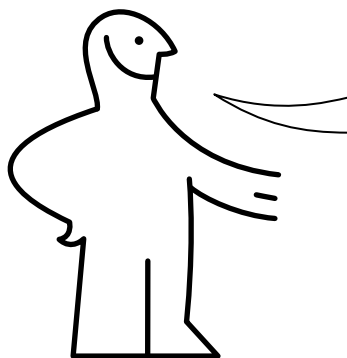
English

Installation must be performed in compliance with current local construction and plumbing regulations. If in doubt, contact a professional.

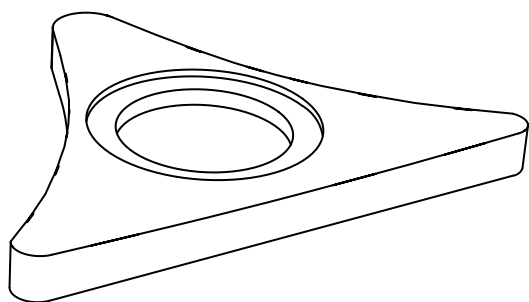
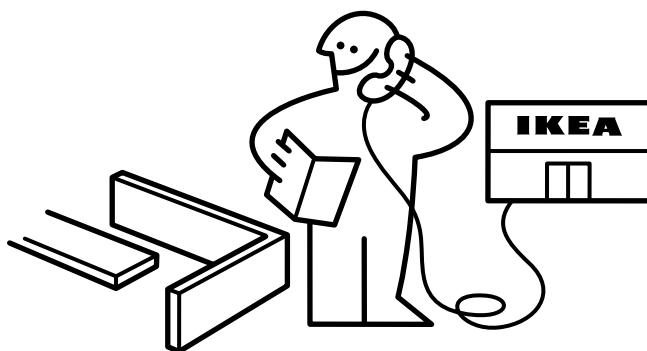
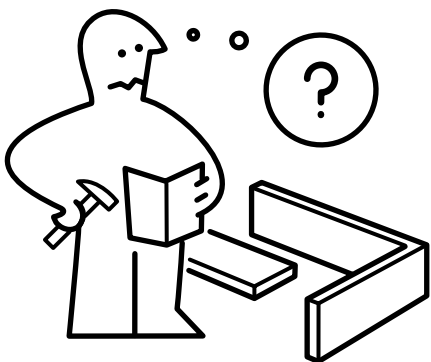


English

Switch off main shut-off valve before changing mixer tap.



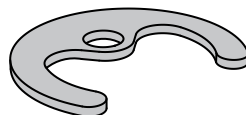
2x



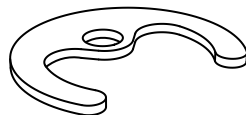
120087



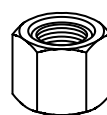
120143



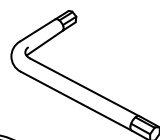
120142



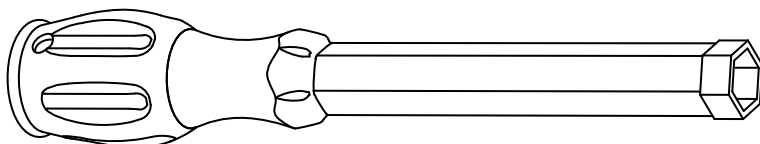
120141



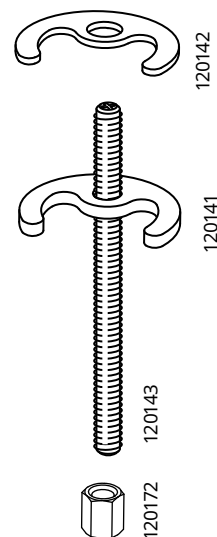
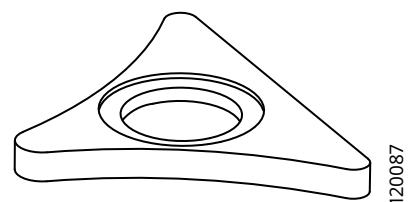
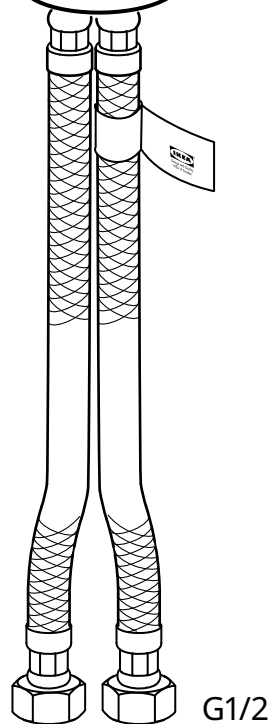
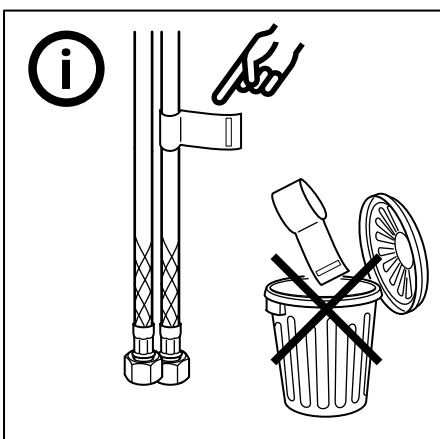
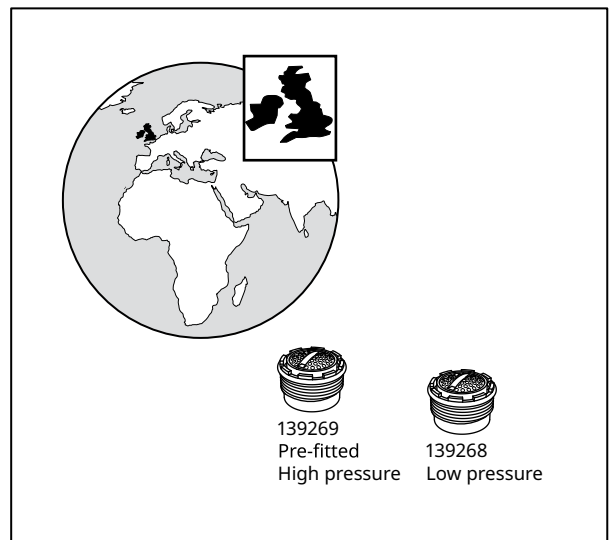
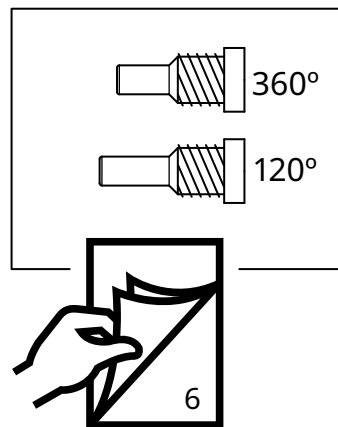
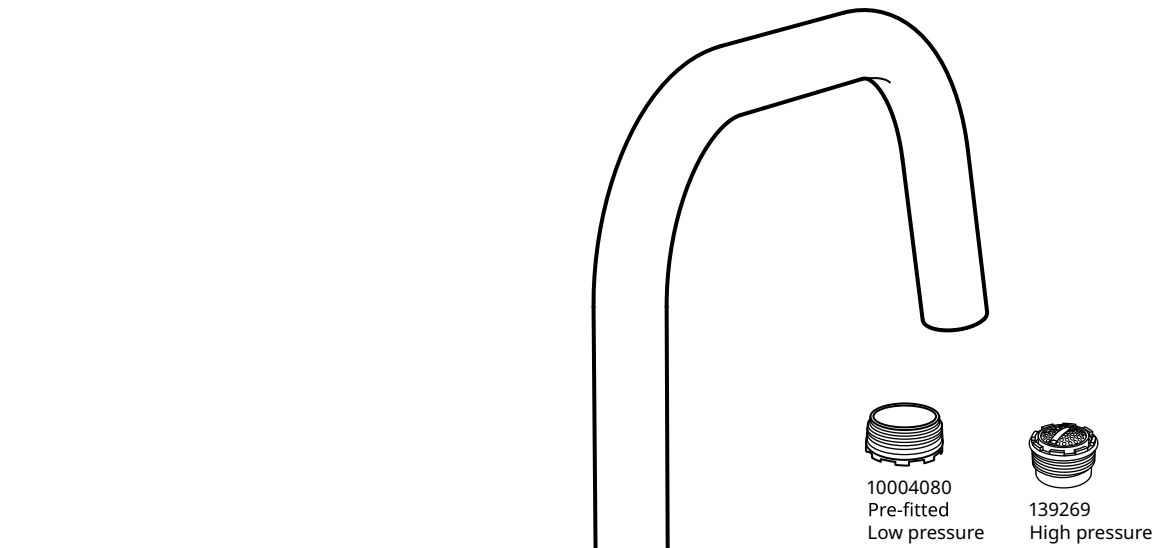
120172



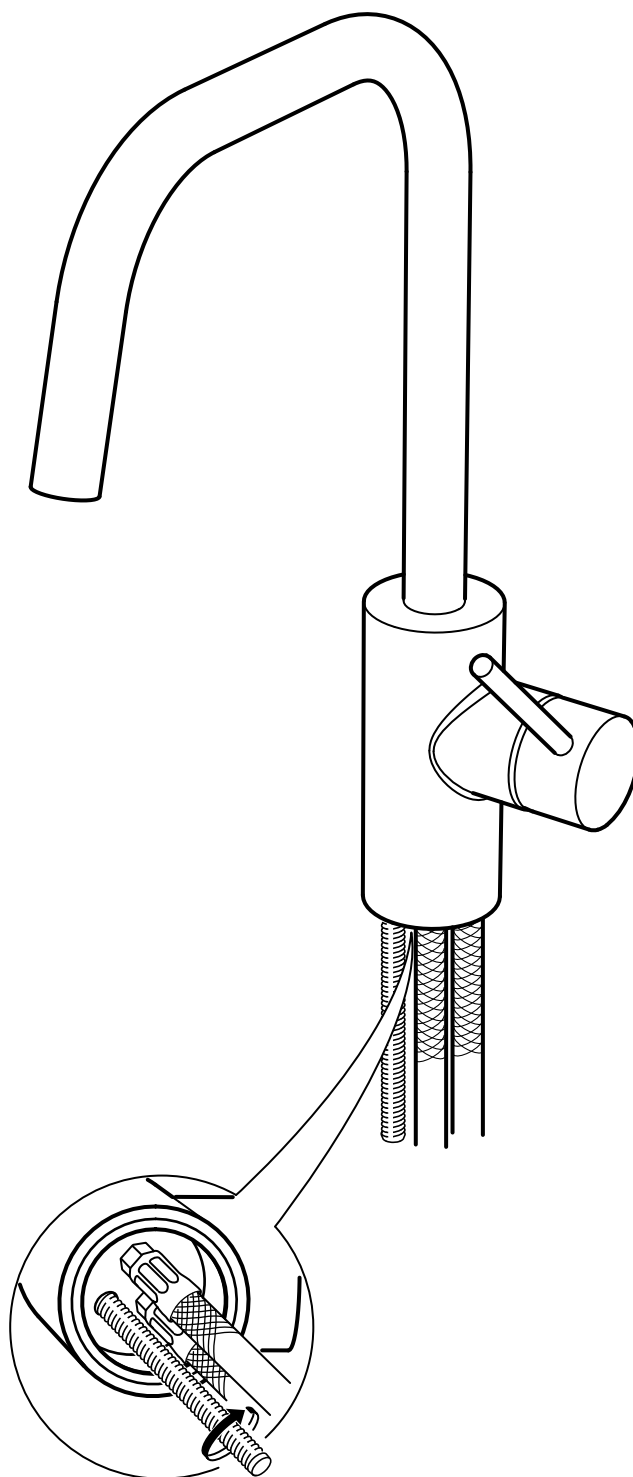
110084



126908



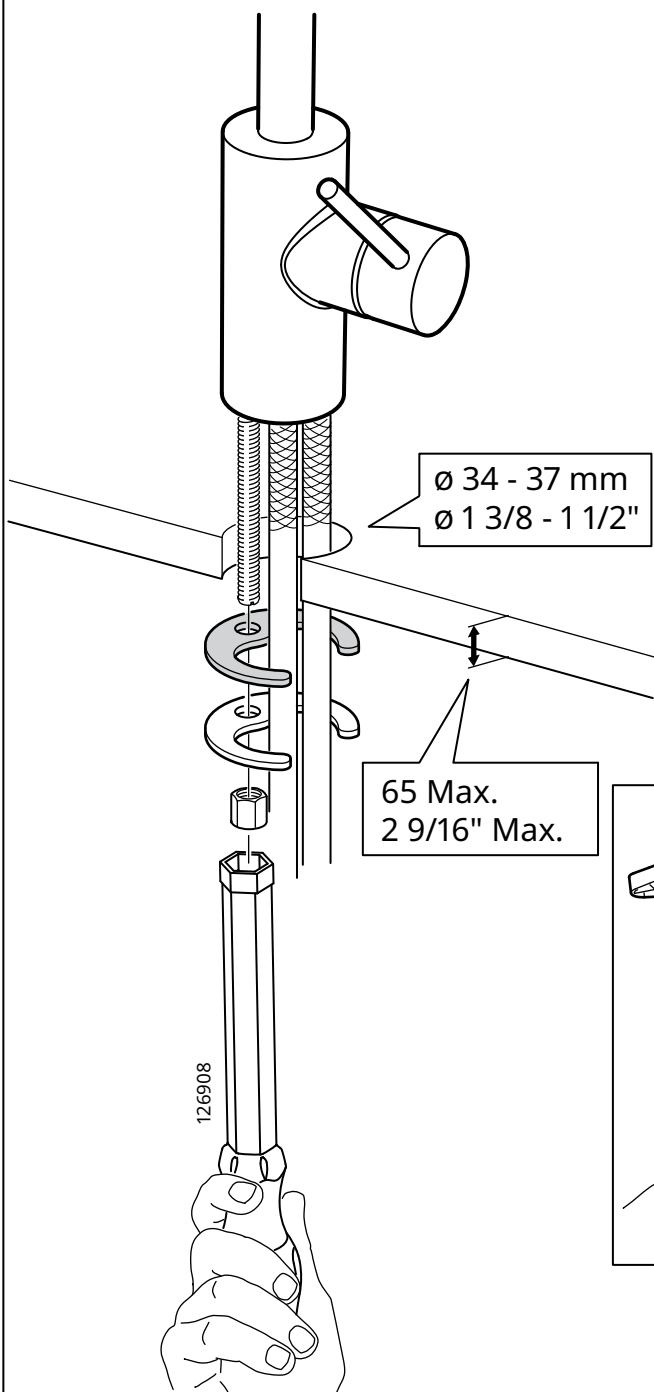
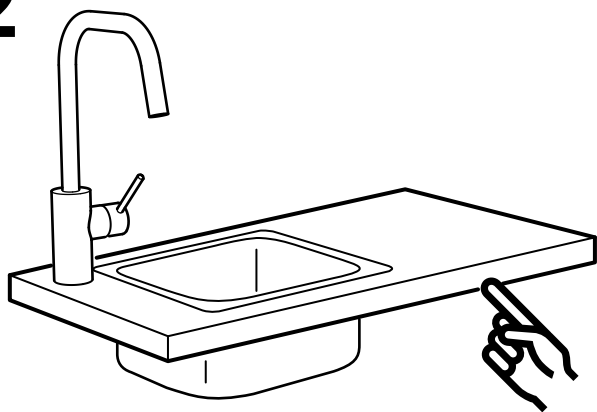
1



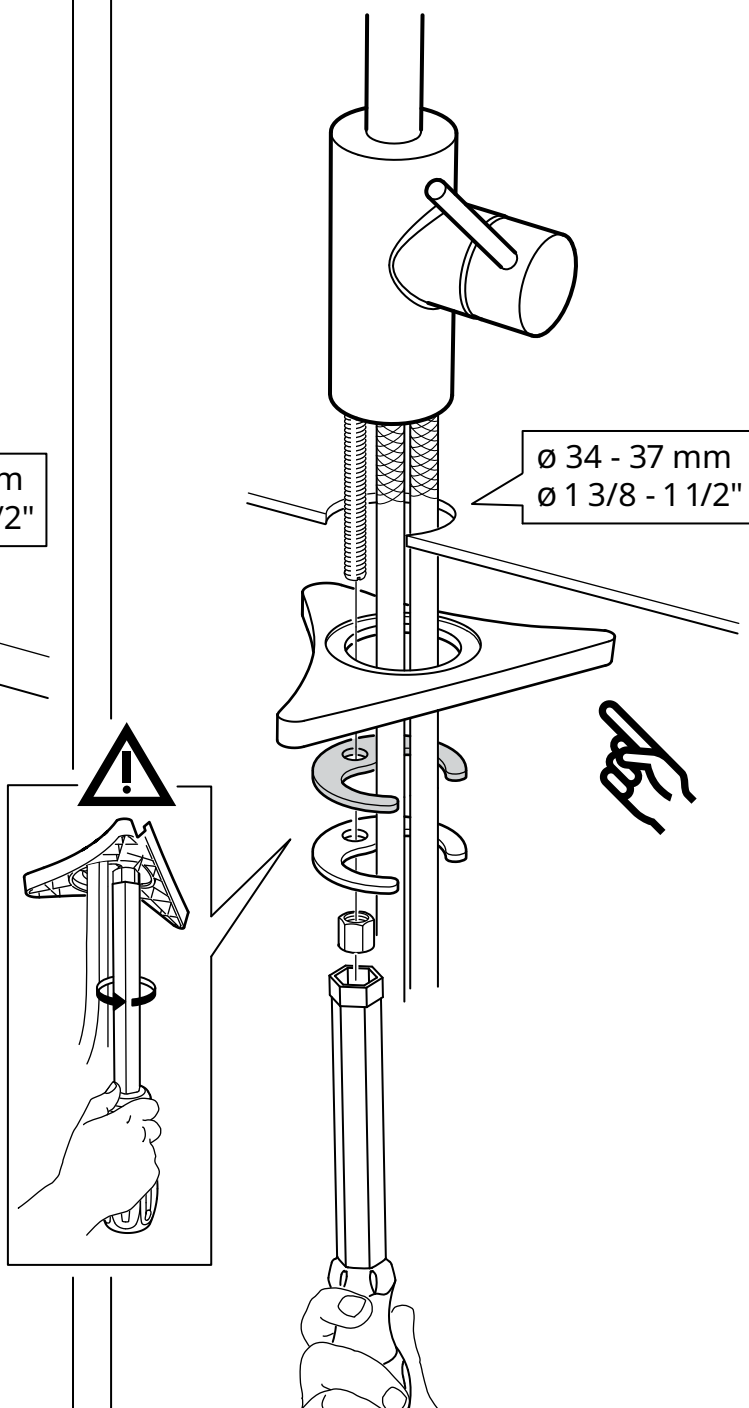
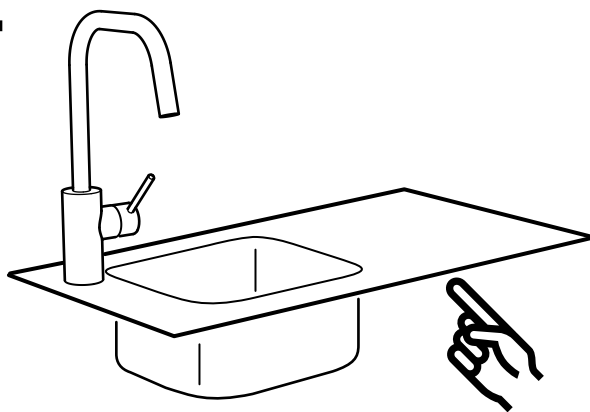
English

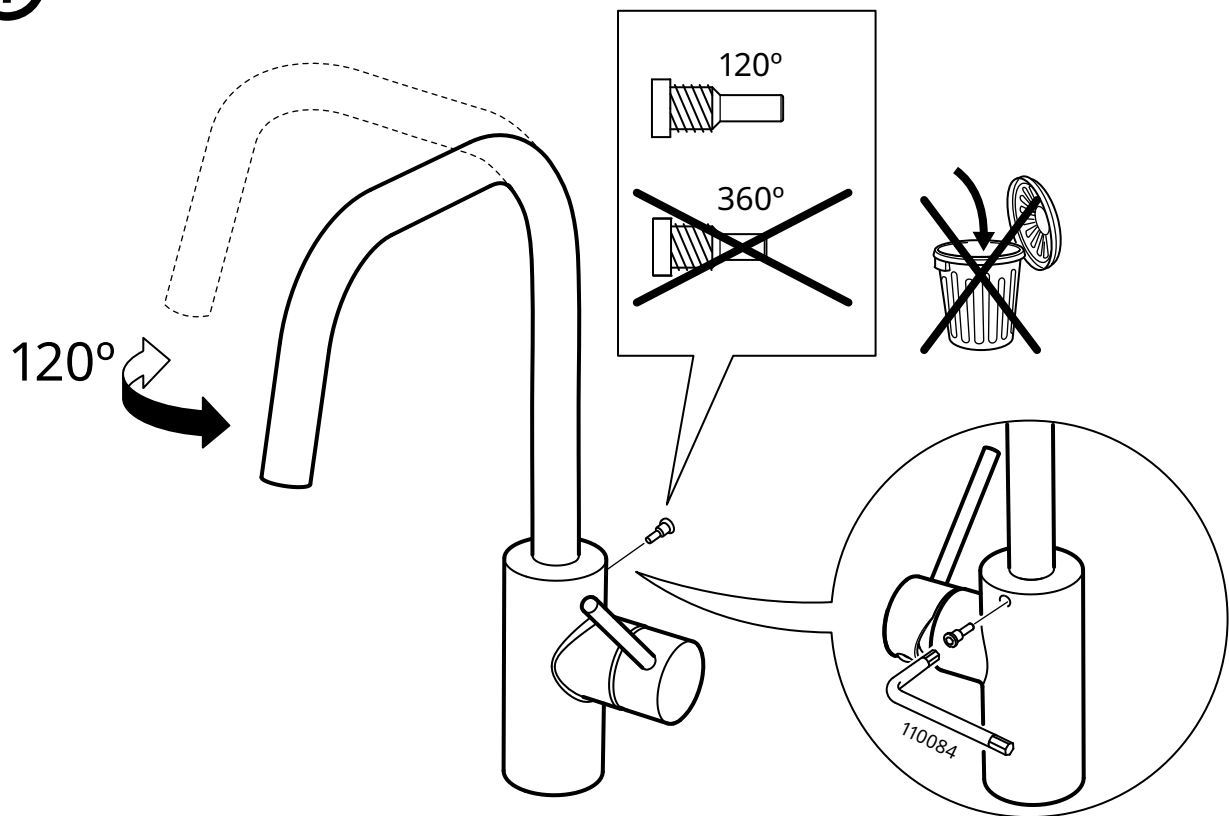
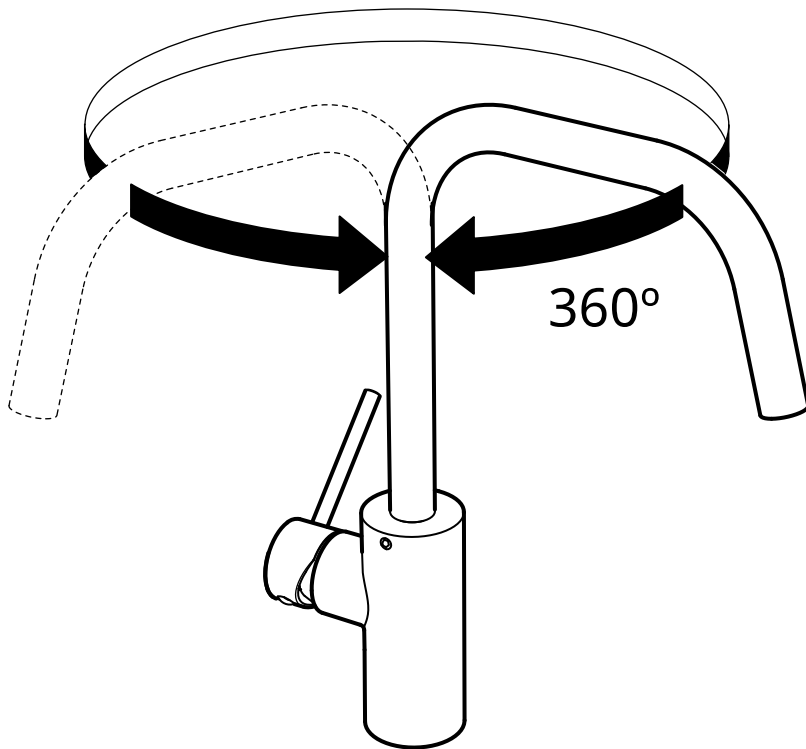
IMPORTANT! Do not tighten too hard: this can damage hoses/pipes and washers.

2



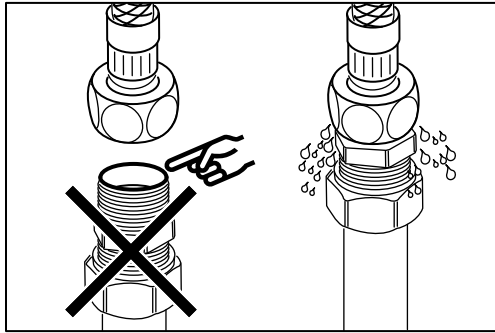
2



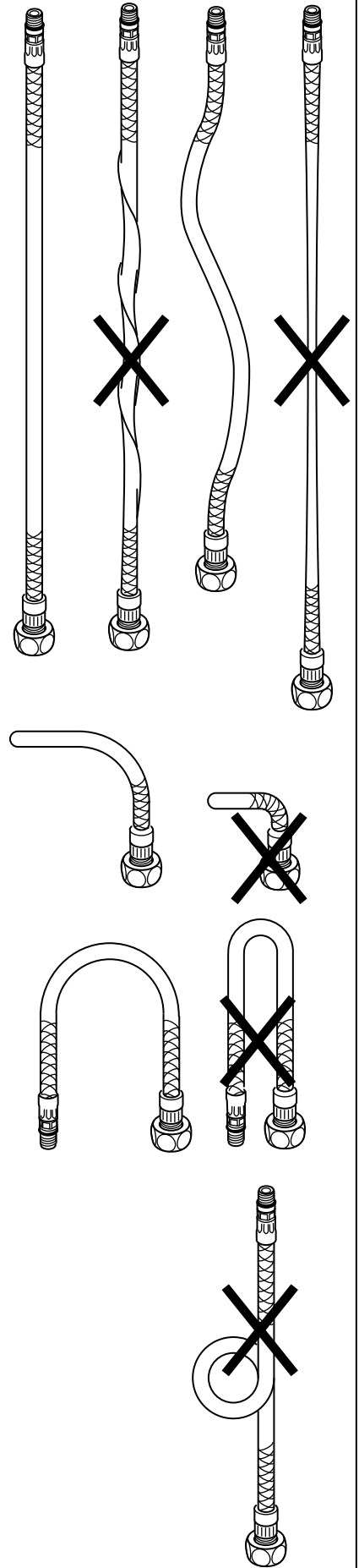


3

Diagram 3 illustrates the final step of securing the cable. The main drawing shows the cable being inserted into the clamp. A callout box provides a detailed view of the clamp's internal mechanism, showing a threaded rod and a nut being tightened with a wrench, indicated by a curved arrow.



Seal the open surfaces with silicone to prevent water from penetrating the worktop upon any leaks. Silicone is not included.





English

To comply with UK water regulations, this product shall be installed in accordance with the following:

English

Inlet supply hoses shall be installed where light is excluded.

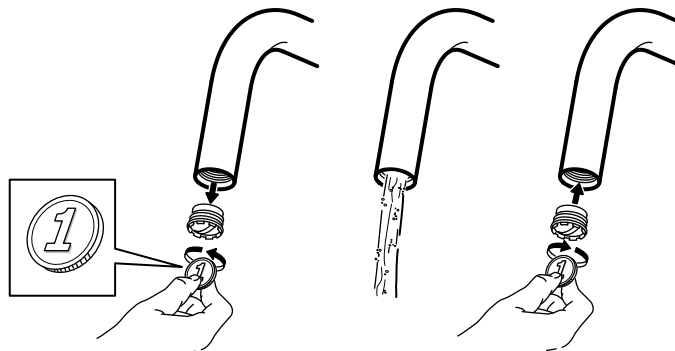
English

Water supplies shall be at reasonably balanced pressures from a common source (e.g. hot and cold supplies both from the same storage or both from a supply pipe). Where the fitting is supplied from unbalanced supplies (e.g. hot and cold supplies from separate sources) an 'Approved' single check valve or some other no less effective backflow prevention device shall be fitted immediately upstream of both hot and cold water inlets.



English

Check at regular intervals to make sure that the installation is not leaking.



10004080
Pre-fitted
Low pressure



139269
High pressure



139269
Pre-fitted
High pressure



139268
Low pressure

English

Before use: Unscrew the Aerator/Flow Guide with a coin and allow the water to run freely for a few minutes. Then screw the Aerator/Flow Guide back in place up to the stop DO NOT OVER TIGHTEN.