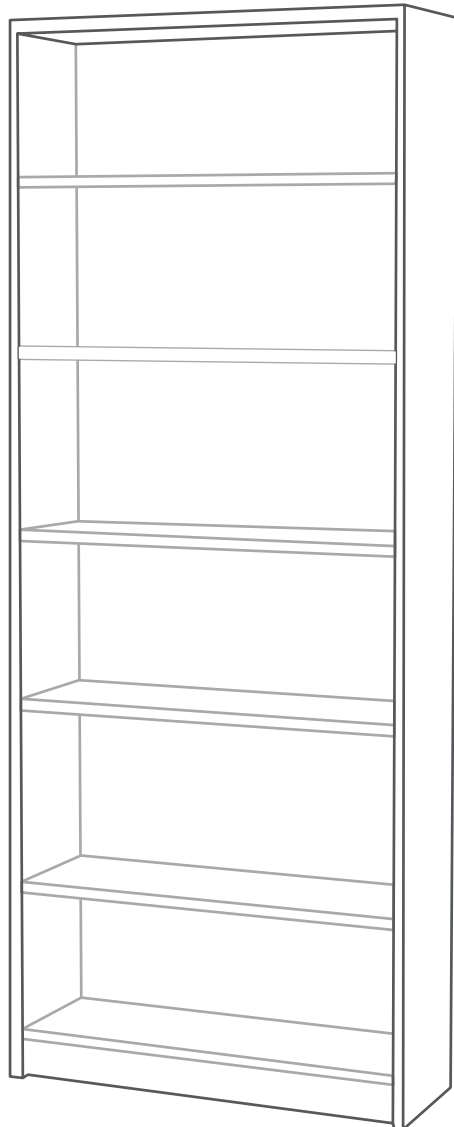


BILLY Bookcase

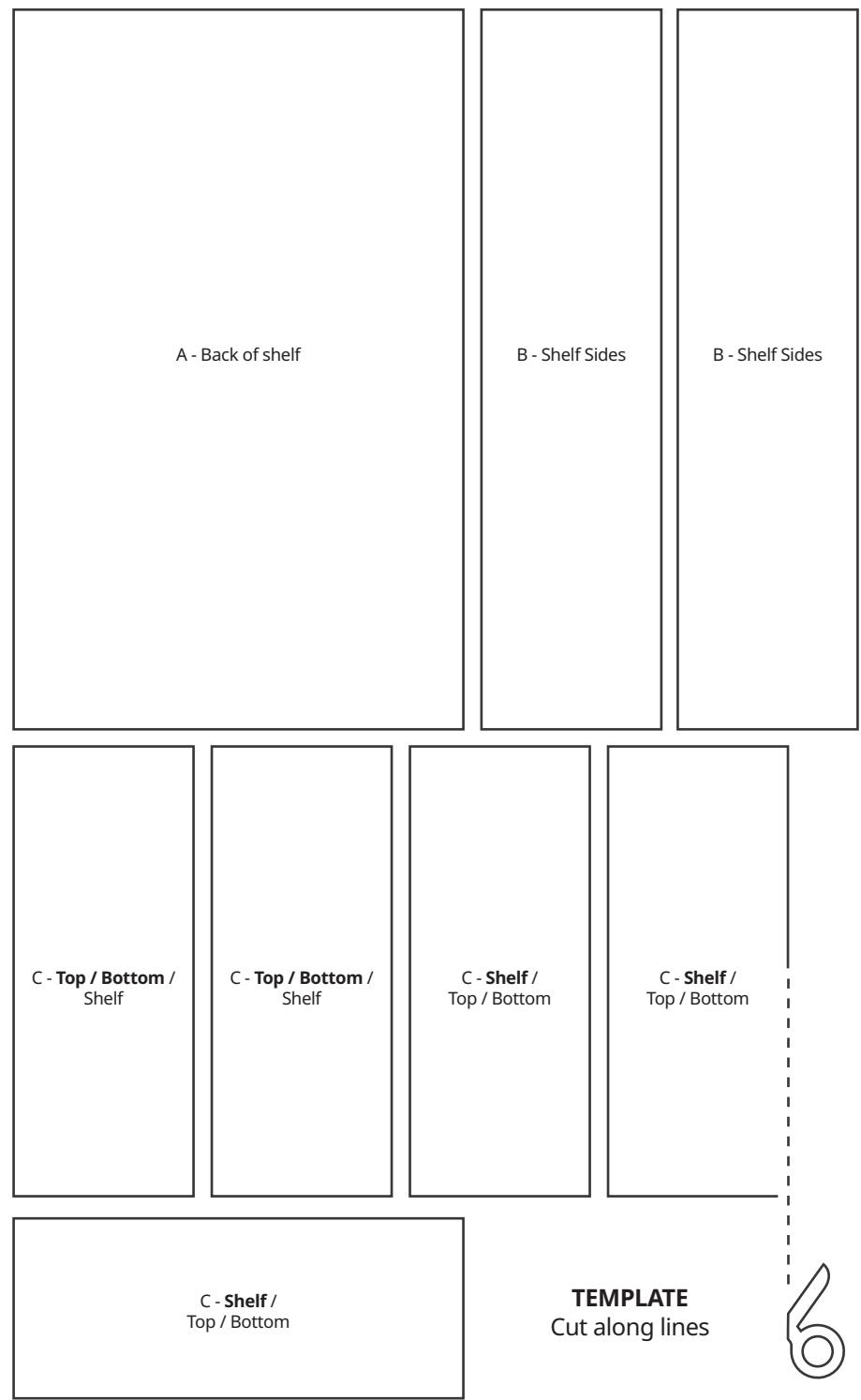
Holiday gingerbread furniture kit

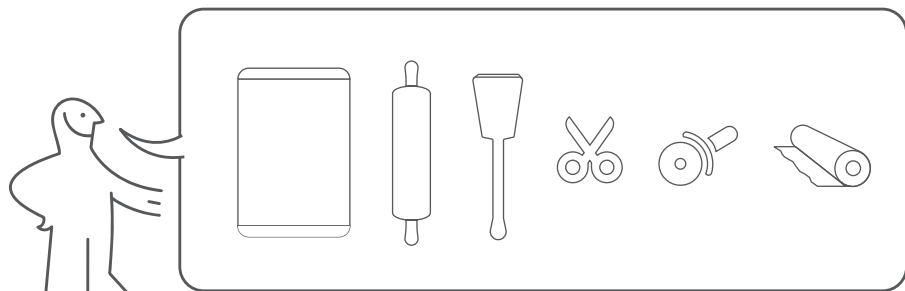


#IKEAHoliday



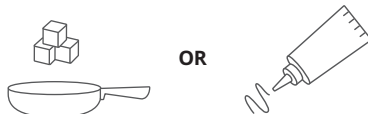
Design and Quality
IKEA of Sweden



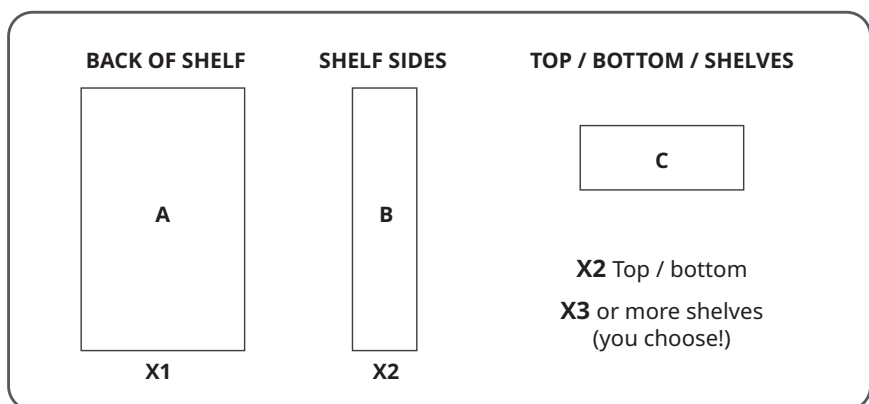


CONNECTING THE PIECES

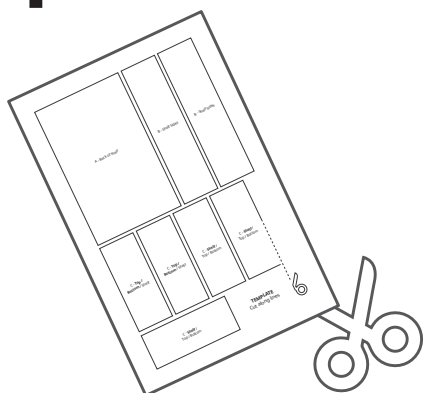
You can either use warmed sugar or icing!



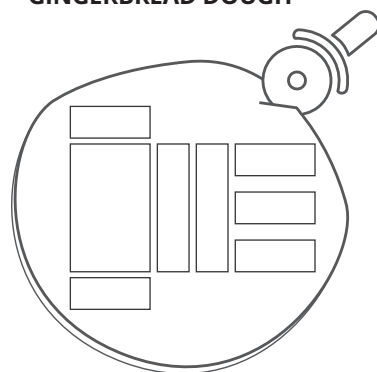
OR



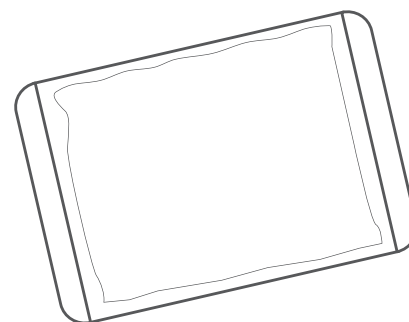
1 CUT PAPER TEMPLATE



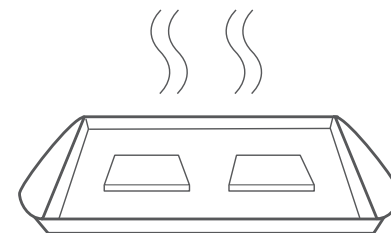
2 USE TEMPLATES TO CUT OUT SHAPES IN GINGERBREAD DOUGH



3



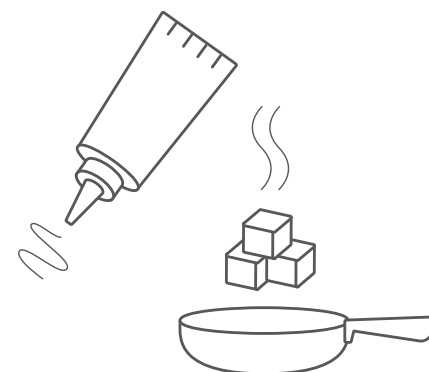
4



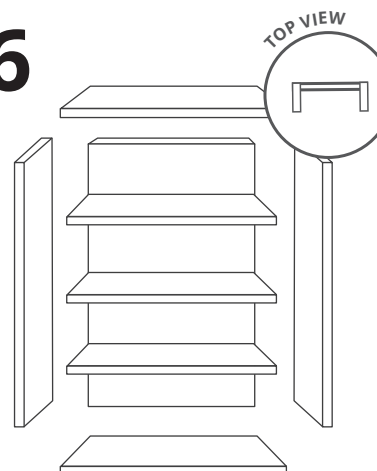
5 PUTTING THE PIECES TOGETHER

You can either use warm sugar or icing to put pieces together.

When using sugar: melt some granulated sugar in a frying pan to make dipping the big gingerbread pieces easier. The sugar dries quickly, in a minute or two. This step is hot, so be careful!



6



7

