

ALINGSÅS

en



Design and Quality
IKEA of Sweden

Table of contents

Safety Information	4	What to do if ...	10
Product description	7	Technical data	14
First Use	7	Environmental concerns	14
Daily use	7	Maintenance and cleaning	15
Preparation	9	IKEA GUARANTEE	16

Safety Information

- This section includes the safety instructions necessary to prevent the risk of personal injury or material damage.
- Our company shall not be held responsible for damages that may occur if these instructions are not observed.

Always use genuine spare parts and accessories.

Original spare parts will be provided for 10 years, following the product purchasing date.

Do not repair or replace any part of the product unless specified expressly in the user manual.

Do not perform any modifications on the product.

1.1 Purpose of usage

- This product is not intended for commercial use and it shall not be used out of its intended purpose.

This product is intended for operating interiors, such as households or similar.

For example;

- In the staff kitchens of the stores, offices and other working environments,
- In farm houses,
- In the units of hotels, motels or other resting facilities that are used by the customers,
- In hostels, or similar environments,
- In catering services and similar non-retail applications.

This product shall not be used in open or enclosed external environments such as vessels, balconies or terraces. Exposing the product to rain, snow, sunlight and wind may cause risk of fire.

1.2 Safety of children, vulnerable persons and pets

- This product may be used by children aged 8 years and older and persons with underdeveloped physical, sensory or mental capabilities or lack of experience and knowledge if they have been given supervision or instruction concerning use of the appliance in a the product safe way and the hazards involved.
- Children between 3 and 8 years are allowed to put and take out food to/from the cooler product.
- Electrical products are dangerous for children and pets. Children and pets must not play with, climb on, or enter the product.
- Cleaning and user maintenance should not be performed by children unless there is someone overseeing them.
- Keep the packaging materials away from children. Risk of injury and suffocation.

Before disposing of old products:

1. Unplug the power cord from the mains socket.
2. Cut the power cord and remove it from the appliance together with the plug.
3. Do not remove the racks and drawers from the product to prevent children from getting inside the appliance.
4. Remove the doors.
5. Store the product so that it shall not be tipped over.
6. Do not allow children to play with the scrapped product.

- Do not dispose of the product by throwing it into fire. Risk of explosion.
- If there is a lock available in the product's door, keep the key out of children's reach.

1.3 Electrical safety

- The product shall not be plugged into the outlet during installation, maintenance, cleaning, repair, and transportation operations.
- If the power the cord is damaged, it shall be replaced by authorized service only to avoid any risk that may occur.
- Do not tuck the power cord under the product or to the rear of the product. Do not put heavy items on the power cord. The power cord should not be bent, crushed, and come into contact with any heat source.
- Do not use an extension cord, multi-plug or adaptor to operate your product.
- Portable multi sockets or portable power supplies may overheat and cause fire. Thus, do not have a multi-plug behind or in the vicinity of the product.
- The plug shall be easily accessible. If this is not possible, a mechanism that meets the electrical legislation and that disconnects all terminals from the mains (fuse, switch, main switch, etc.) shall be available on the electrical installation.
- Do not touch the plug with wet hands.
- When unplugging the appliance, don't hold the power cord, but the plug.

1.4 Handling Safety

- This product is heavy, do not handle it by yourself.
- Do not hold the product from its door while handling the product.
- Be careful not to damage the cooling system and the pipes while handling the product. Do not operate the product if the pipes are damaged, and contact an authorized service.

1.5 Installation Safety

- To prepare the product for installation, see the information in the user guide and make sure the electric and water utilities are as required. If the installation is not suitable, call a qualified electrician and plumber to have them make the necessary arrangements. Otherwise, electric shock, fire, issues with the product or injuries may occur.
- Check for any damage on the product before installing it. Do not have the product installed if it is damaged.
- Place the product on a level and hard surface and balance with the adjustable legs. Otherwise, the refrigerator may tip over and cause injuries.
- The product shall be installed in a dry and ventilated environment. Do not keep carpets, rugs or similar floor covers under the product if it is not recommended by the supplier. This may cause risk of fire as a result of inadequate ventilation!
- Do not block or cover ventilation holes. Otherwise, power consumption may be increased and damage to your product may occur.
- Do not connect the product to supply systems such as solar power supplies. Otherwise, damage to your product may occur as a result of the abrupt voltage fluctuations!
- The more refrigerant a refrigerator contains, the bigger its installation room shall be. In very small rooms, a flammable gas-air mixture may occur in case of a gas leak in the cooling system. At least 1 m³ of volume is required for each 8 grams of refrigerant. The amount of the refrigerant available in your product is specified in the Type Label.
- The installation place of the product shall not be exposed to direct sunlight and it shall not be in the vicinity of a heat source such as stoves, radiators, etc.

If you cannot prevent installation of the product in the vicinity of a heat source, you shall use a suitable insulation plate and the minimum distance to the heat source shall be as specified below.

- At least 30 cm away from heat sources such as stoves, heating units and heaters, etc.,
- And at least 5 cm away from electric ovens.

- Your product has the protection class of I. Plug the product in a grounded socket that conforms with the Voltage, Current and Frequency values specified in the type label. The socket outlet shall be equipped with a fuse with a rating of 10 A – 16 A. Our company shall not be responsible for the damages that shall be incurred as a result of operating the product without ensuring ground and electrical connections made as per local or national regulations.
- The product's power cable must be unplugged during installation. Otherwise, risk of electric shock and injury may occur!
- Do not plug the product to loose, broken, dirty, greasy sockets or sockets that has come out their seats or sockets with a risk of water contact.
- Place the power cord and hoses (if available) of the product so that they shall not cause a risk of tripping over.
- Penetration of humidity to live parts or to the power cord may cause short circuit. Thus, do not

use the product in humid environments or in areas where water may splash (e.g. garage, laundry room, etc.) If the refrigerator is wet by water, unplug it and contact an authorized service.

- Do not connect your refrigerator to power saving devices. These systems are harmful for the product.

1.6 Operational safety

- Do not use chemical solvents on the product. These materials contain an explosion risk.
- In case of a failure of the product, unplug it and do not operate until it is repaired by the authorized service. There is a risk of electric shock!
- Do not place a source of flame (e.g. candles, cigarettes, etc.) on the product or in the vicinity of it.
- Do not get on the product. Risk of falling and injury!
- Do not cause damage to the pipes of the cooling system using sharp and piercing tools. The refrigerant that sprays out in case of puncturing the gas pipes, pipe extensions or upper surface coatings may cause irritation of skin and injuries of the eyes.
- Do not place and operate electric appliances inside the refrigerators/deep freezer unless it is advised by the manufacturer.
- Do not jam any parts of your hands or your body to the moving parts inside the product. Be careful to prevent jamming of your fingers between the refrigerator and its door. Be careful while opening or closing the door if there are children around.
- Do not put ice cream, ice cubes or frozen food to your mouth as soon as you take them out of the freezer. Risk of frostbite!
- Do not touch the inner walls, metal parts of the freezer or food kept inside the refrigerator with wet hands. Risk of frostbite!
- Do not place soda cans or cans and bottles that contain fluids that may be frozen to the freezer compartment. Cans or bottles may explode. Risk of injury and material damage!
- Do not use or place materials sensitive against temperature such as flammable sprays, flammable objects, dry ice or other chemical agents in the vicinity of the refrigerator. Risk of fire and explosion!
- Do not store explosive materials such as aerosol cans with flammable materials inside the product.
- Do not place cans containing fluids over the product. Splashing of water on an electrical part may cause the risk of an electric shock or a fire.
- This product is not intended for storage and cooling of medicines, blood plasma, laboratory preparations or similar materials and products that are subject to the Medical Products Directive.
- If the product is used against its intended purpose, it may cause damage to or deterioration of the products kept inside.
- If your refrigerator is equipped with blue light, do not look at this light with optical devices. Do not stare directly at UV LED light for a long time. Ultraviolet rays may cause eye strain.
- Do not fill the product with more food than its capacity. Injuries or damages may occur if the contents of the refrigerator falls when the door

is opened. Similar problems may occur when an object is placed over the product.

- Ensure that you have removed any ice or water that may have fallen to the floor to prevent injuries.
- Change the locations of the racks/bottle racks on the door of your refrigerator while the racks are empty only. Danger of physical injury!
- Do not place objects that may fall/tipped over on the product. These objects may fall while opening or closing the door and cause injuries and/or material damages.
- Do not hit or exert excessive pressure on glass surfaces. Broken glass may cause injuries and/or material damages.
- The cooling system in your product contains R600a refrigerant. The refrigerant type used in the product is specified in the the type label. This gas is flammable. Therefore, be careful not to damage the cooling system and the pipes while operating the product. In case of damage to the pipes;
 - Do not touch the product or the power cord,
 - Keep the product away from potential sources of fire that may cause the product to catch fire.
 - Ventilation the area where the product is placed. Do not use a fan.
- If the product is damaged and you observe gas leak, please stay away from the gas. Gas may cause frostbite if it contacts your skin.

1.7 Maintenance and cleaning safety

- Do not pull by the door handle if you shall move the product for cleaning purposes. Handle may cause injuries if it is pulled too hard.
- Do not clean the product by spraying or pouring water on the product and inside the product. Risk of electric shock and fire.
- Do not use sharp or abrasive tools to clean the product. Do not use materials such as household cleaning agents, detergents, gas, gasoline, alcohol, wax, etc.
- Use cleaning and maintenance agents that are not harmful for food only inside the product.
- Do not use steam or steamed cleaning materials for cleaning the product and thawing the ice inside it. Steam contacts the live areas in your refrigerator and causes short circuit or electric shock!
- Take care to keep water away from the electronic circuits or lighting of the product.
- Use a clean, dry cloth to wipe the dust or foreign material on the tips of the plugs. Do not use a wet or damp piece of cloth to clean the plug. Otherwise, risk of fire or electric shock may occur.

Installation

To make the product ready for use, be careful that the electrical wiring and plumbing are appropriate by referring to the information in the user manual. If not, call a qualified electrician and plumber and have the necessary arrangements made.

⚠WARNING: The manufacturer is not liable for damages caused by operations by unauthorized persons. To avoid shaking, place the product on a flat surface.

⚠WARNING: During the installation, the power plug of the product should not be plugged in. Otherwise, there is a danger of death or serious injury!

⚠WARNING: If the doorway of the room to where the product will be placed is so narrow that the product cannot pass through, pass the product by turning it to side; otherwise, call an authorized service.

- Do not expose the product to direct sunlight and do not store it in humid place.
- Do not install the product where the temperature drops below 10 °C.

Electrical connection

⚠WARNING: Do not make connections to the extension cords or multiple sockets.

⚠WARNING: Damaged power cable must be replaced by an Authorized Service.

⚠WARNING: When positioning the appliance, ensure the supply cord is not trapped or damaged

- Our company will not be liable for any damages that occur when the product is used without grounding and electrical connections that are according to national regulations.
- The power cord plug must be easily accessible after installation.
- Connect your refrigerator to an outlet with a ground line with 220-240V/50 Hz voltage. Plugs should have a 10-16 A fuse.

Climate Class and Definitions

Please refer to the Climate Class on the rating plate of your device. One of the following information is applicable to your device according to the Climate Class.

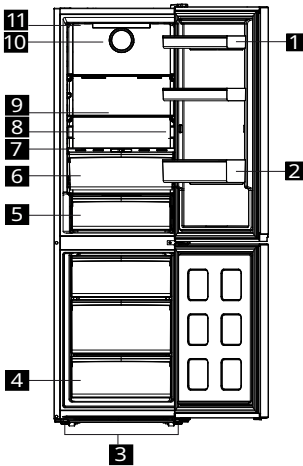
SN: Long Term Temperate Climate: This cooling device is designed for use at ambient temperatures between 10 °C and 32 °C.

N: Temperate Climate: This cooling device is designed for use at ambient temperatures between 16°C and 32 °C.

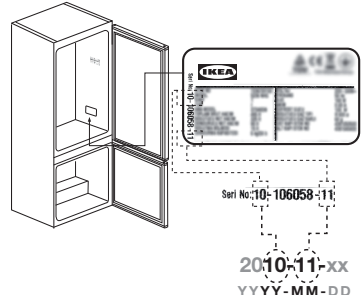
ST: Subtropical Climate: This cooling device is designed for use at ambient temperatures between 16°C and 38°C.

T: Tropical Climate: This cooling device is designed for use at ambient temperatures between 16°C and 43°C.

Product description



- 1 Adjustable door shelves
- 2 Bottle shelf
- 3 Adjustable front feet
- 4 Freezer compartment
- 5 The dairy (cold storage) bin or crisper
- 6 Crisper
- 7 Everfresh
- 8 Rating Plate
- 9 Adjustable shelves
- 10 Control Panel
- 11 Fan



First Use

☐ Before using your refrigerator, make sure the necessary preparations are made in line with the instructions in "Safety Information" and "Installation" sections.

If the product is transported horizontally, do not plug the product to power supply for first 4 hours.

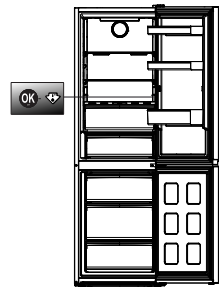
Keep the product running without placing any food inside for 12 hours and do not open the door, unless absolutely necessary.

☐ A sound will be heard when the compressor is engaged. It is normal for the product to make noise even if the compressor is not running, as fluid and gas may be compressed in the cooling system.

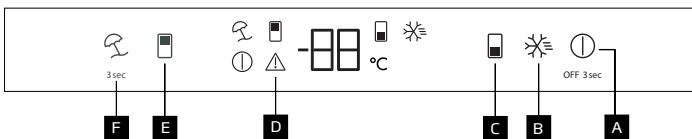
☐ It is normal for the front edges of the refrigerator to be warm. These areas are designed to warm up in order to prevent condensation.

☐ For some models, control panel turns off automatically 1 minute after the door closes. It will be

reactivated when the door is opened or any button is pressed. **Important!** This appliance is sold in France. In accordance with regulations valid in this country it must be provided with a special device (see figure) placed in the lower compartment of the fridge to indicate the coldest zone of it.



Daily use



- A Product Switch Off Button
- B Quick Freezing Key
- C Freezer Compartment Temperature Setting Key
- D Error Status Indicator
- E Cooler Compartment Temperature Setting Key
- F Vacation Function Key

Product Switct Off Button A

When this button is pressed for 3 seconds, the product switches to off mode, in off mode the A icon lights up on the display, in this mode the refrigerator does not perform cooling, when the button is pressed again for 3 seconds the refrigerator starts normal operation, the icon goes out.

Quick Freezing B

When the quick freeze key is pressed, the quick freeze icon B lights up and the quick freeze function shall be activated. The freezer compartment temperature is set to -27 °C. Press the key again to cancel the function. Quick freeze function will automatically self-cancel after a 48hours. To freeze a large amount of fresh food press the quick freeze key before placing them in the freezer compartment.

Freezer Compartment Temperature Setting Key C

Temperature setting is made for freezer compartment. By pressing the key the temperature of the freezing compartment can be set at -18,-19,-20,-21,-22,-23,-24 °C.

Error Status Indicator D

This indicator D shall be active when your refrigerator cannot perform adequate cooling or in case of any sensor error. The letter "E" appears on the temperature display of the freezer compartment while the numbers 1, 2, 3, appear on the temperature display of the refrigerator compartment. These figures provide information to the authorized service on the error that has occurred. When you load the freezer compartment with hot food or if you leave the door open for a prolonged time, an exclamation mark can be lit. This is not a fault, this warning shall be removed when the food is cooled or pressed any key.

Cooler Compartment Temperature Setting E

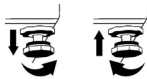
Allows setting of temperature for cooler compartment. By pressing the key the cooling compartment can be set to 8, 7, 6, 5, 4, 3, 2 and 1°C.

Vacation Function F

To activate vacation function, press the button for 3 seconds. Vacation mode will be activated and the vacation icon F lights up. The "-.-" symbol appears on the cooler compartment temperature display and the cooling compartment does not perform active cooling. When this function is activated, it is not convenient to keep food in the cooling compartment. Other compartments continue to cool according to the temperatures set. Press and hold the key for 3 seconds again to cancel this function.

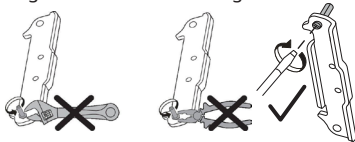
Adjusting the feet

If the product is unstable on the place where it is placed, adjust it by turning the front adjustment feet to the right or left.



Changing door opening direction

Based on where you use, your refrigerator's door opening direction can be changed.



Changing the illumination lamp

To change the Bulb/LED used for illumination of your refrigerator, call your AuthorisedService.

The lamp(s) used in this appliance is not suitable for household room illumination. The intended purpose of this lamp is to assist the user to place foodstuffs in the refrigerator/freezer in a safe and comfortable way.

The lamps used in this appliance are stable in extreme physical conditions such as temperatures below -20 °C. **(only chest and upright freezer)**

Door Open Alert

The door open alert system of your refrigerator may differ depending on the model.

Version 1;

If the door of the product remains open for a certain time (between 60 s and 120 s), an audio warning signal sounds; depending on the product model, a visual warning signal (light flash) can also be displayed. If you close the door of the device or press a button on the screen of the device, if any, the warning sound will stop.

Version 2;

If the door of the device remains open for a certain period of time (between 60 s and 120 s), the door open alert is sounded. The door open alert is sounded gradually. First, an audible warning starts to sound. After 4 minutes, if the door is still not closed, a visual warning (lighting flash) is activated. The door open alert will be delayed for a certain period of time (between 60 s and 120 s) when any key on the product screen, if any, is pressed. Then the process will start again. When the device door is closed, the door open alert will be cancelled.

Crisper

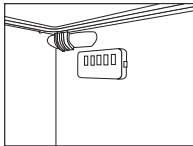
The refrigerator's crisper is designed to keep vegetables fresh by preserving their humidity. For this purpose, the overall cold air circulation is intensified in the crisper. Keep fruits and vegetables in this compartment. Keep the green-leaved vegetables and fruits separately to prolong their life.

Dairy Products Cold Storage Area Cold Storage Drawer

The Cold Storage Drawer can reach lower temperatures in the cooler compartment. Use this drawer for delicatessen products (salami, sausage, etc.) and dairy products that require colder storage conditions, or for meat, chicken or fish to be consumed quickly. It is not suitable to store fruits and vegetables in this drawer.

Preparation

- For a freestanding appliance; 'this refrigerating appliance is not intended to be used as a built-in appliance.
- Your refrigerator should be installed at least 30 cm away from heat sources such as hobs, ovens, central heater and stoves and at least 5 cm away from electrical ovens and should not be located under direct sunlight.
- The ambient temperature of the room where you install your refrigerator should at least be +10°C. Operating your refrigerator under cooler conditions is not recommended with regard to its efficiency.
- Please make sure that the interior of your refrigerator is cleaned thoroughly.
- When you operate your refrigerator for the first time, please observe the following instructions during the initial six hours.
- The door should not be opened frequently.
- It must be operated empty without any food in it.
- Do not unplug your refrigerator. If a power failure occurs out of your control, please see the warnings in the "What to do if" section.
- Original packaging and foam materials should be kept for future transportations or moving.
- The baskets/drawers that are provided with the chill compartment must always be in use for low energy consumption and for better storage conditions.
- Food contact with the temperature sensor in the freezer compartment may increase energy consumption of the appliance. Thus any contact with the sensor(s) must be avoided.

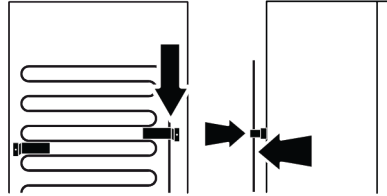


- In some models, the instrument panel on display automatically turns off 1 minutes after the door has closed. It will be reactivated when the door has opened or pressed on any key.
- When temperature change caused by door opening/closing frequently, condensation on door/body shelves and the glass containers may be seen.
- Since hot and humid air will not directly penetrate into your product when the doors are not opened, your product will optimize itself in conditions sufficient to protect your food. Functions and components such as compressor, fan, heater, defrost, lighting, display and so on will operate according to the needs to consume minimum energy under these circumstances.
- In case of multiple options are present glass shelves must be placed so that the air outlets at the backwall are not blocked, preferably air outlets are remaining below the glass shelf. This combination may help improving air distribution and energy efficiency.

- Your product has adjustable condenser behind. For better performance please adjust it to open position as shown on Assembly Instructions manual.

Attaching the Plastic Wedges

The condenser of the refrigerator is located at the rear. To minimize power consumption and increase energy efficiency the top and bottom of the condenser must be pulled back and secured as shown in the picture. When the condenser is pulled backwards, the brackets lock and the condenser's position is secured.



What to do if ...

Please review this list before calling the service. It will save your time and money. This list includes frequent complaints that are not arising from defective workmanship or material usage. Some of the features described here may not exist in your product.

Problems		Solutions
The refrigerator does not operate.	<ul style="list-style-type: none"> The plug is not inserted into the socket correctly. 	<ul style="list-style-type: none"> Insert the plug into the socket securely.
	<ul style="list-style-type: none"> The fuse of the socket which your refrigerator is connected to or the main fuse have blown out. 	<ul style="list-style-type: none"> Check the fuse.
Condensation on the side wall of the fridge compartment (MULTIZONE, COOL CONTROL and FLEXI ZONE).	<ul style="list-style-type: none"> Door has been opened frequently. 	<ul style="list-style-type: none"> Do not open and close the door of refrigerator frequently.
	<ul style="list-style-type: none"> Ambient is very humid. 	<ul style="list-style-type: none"> Do not install your refrigerator into highly humid places.
	<ul style="list-style-type: none"> Food containing liquid is stored in open containers. 	<ul style="list-style-type: none"> Do not store food with liquid content in open containers.
	<ul style="list-style-type: none"> Door of the refrigerator is left open. 	<ul style="list-style-type: none"> Close the door of the refrigerator.
	<ul style="list-style-type: none"> Thermostat is set to a very cold level. 	<ul style="list-style-type: none"> Set the thermostat to a suitable level.
Compressor is not running	<ul style="list-style-type: none"> Protective thermic of the compressor will blow out during sudden power failures. 	<ul style="list-style-type: none"> The refrigerator will start running approximately after 6 minutes.
	<ul style="list-style-type: none"> plug-out plug-ins as the refrigerant pressure in the cooling system of the refrigerator has not been balanced yet. 	<ul style="list-style-type: none"> Please call the service if the refrigerator does not startup at the end of this period.
	<ul style="list-style-type: none"> The fridge is in defrost cycle. 	<ul style="list-style-type: none"> This is normal for a full-automatically defrosting refrigerator. Defrosting cycle occurs periodically.
	<ul style="list-style-type: none"> The refrigerator is not plugged into the socket. 	<ul style="list-style-type: none"> Make sure that the plug is fit into the socket.
	<ul style="list-style-type: none"> Temperature settings are not made correctly. 	<ul style="list-style-type: none"> Select the suitable temperature value.
	<ul style="list-style-type: none"> There is a power outage. 	<ul style="list-style-type: none"> Refrigerator returns to normal operation when the power restores.

<ul style="list-style-type: none"> The operation noise increases when the refrigerator is running. 	<ul style="list-style-type: none"> The operating performance of the refrigerator may change due to the changes in the ambient temperature. It is normal and not a fault. 	
<p>The refrigerator is running frequently or for a long time.</p>	<ul style="list-style-type: none"> New product may be wider than the previous one. Larger refrigerators operate for a longer period of time. 	
	<ul style="list-style-type: none"> The room temperature may be high. 	<ul style="list-style-type: none"> It is normal that the product operates for longer periods in hot ambient.
	<ul style="list-style-type: none"> The refrigerator might be plugged in recently or might be loaded with food. 	<ul style="list-style-type: none"> When the refrigerator is plugged in or loaded with food recently, it will take longer for it to attain the set temperature. This is normal.
	<ul style="list-style-type: none"> Large amounts of hot food might be put in the refrigerator recently. 	<ul style="list-style-type: none"> Do not put hot food into the refrigerator.
	<ul style="list-style-type: none"> Doors might be opened frequently or left open for a long time. 	<ul style="list-style-type: none"> >The warm air that has entered into the refrigerator causes the refrigerator to run for longer periods. Do not open the doors frequently.
	<ul style="list-style-type: none"> Freezer or fridge compartment door might be left open. 	<ul style="list-style-type: none"> Check if the doors are closed completely.
	<ul style="list-style-type: none"> The refrigerator is adjusted to a very low temperature. 	<ul style="list-style-type: none"> Adjust the refrigerator temperature to a warmer degree and wait until the temperature is achieved.
	<ul style="list-style-type: none"> Door seal of the fridge or freezer may be soiled, worn out, broken or not properly seated. 	<ul style="list-style-type: none"> Clean or replace the seal. Damaged/broken seal causes the refrigerator to run for a longer period of time in order to maintain the current temperature.
<p>Fridge temperature is very low while the freezer temperature is sufficient.</p>	<ul style="list-style-type: none"> The fridge temperature is adjusted to a very low value. 	<ul style="list-style-type: none"> Adjust the fridge temperature to a warmer degree and check.
<p>Food kept in the fridge compartment drawers is frozen.</p>	<ul style="list-style-type: none"> The fridge temperature is adjusted to a very high value. 	<ul style="list-style-type: none"> Adjust the fridge temperature to a lower value and check.

<p>Temperature in the fridge or freezer is very low.</p>	<ul style="list-style-type: none"> The fridge temperature is adjusted to a very high value. 	<ul style="list-style-type: none"> Fridge compartment temperature setting has an effect on the temperature of the freezer. Change the temperatures of the fridge or freezer and wait until the relevant compartments attain a sufficient temperature.
	<ul style="list-style-type: none"> Doors are opened frequently or left open for a long time. 	<ul style="list-style-type: none"> Do not open the doors frequently.
	<ul style="list-style-type: none"> Door is open. 	<ul style="list-style-type: none"> Close the door completely.
	<ul style="list-style-type: none"> The refrigerator is plugged in or loaded with food recently. 	<ul style="list-style-type: none"> This is normal. When the refrigerator is plugged in or loaded with food recently, it will take longer for it to attain the set temperature.
	<ul style="list-style-type: none"> Large amounts of hot food might be put in the refrigerator recently. 	<ul style="list-style-type: none"> Do not put hot food into the refrigerator.
<p>Vibrations or noise.</p>	<ul style="list-style-type: none"> The floor is not level or stable. 	<ul style="list-style-type: none"> If the refrigerator rocks when moved slowly, balance it by adjusting its feet. Also make sure that the floor is strong enough to carry the refrigerator, and level.
	<ul style="list-style-type: none"> The items put onto the refrigerator may cause noise. 	<ul style="list-style-type: none"> Remove the items on top of the refrigerator.
<p>There are noises coming from the refrigerator like liquid flowing, spraying, etc.</p>	<ul style="list-style-type: none"> Liquid and gas flows occur in accordance with the operating principles of your refrigerator. It is normal and not a fault. 	
<p>Whistle comes from the refrigerator.</p>	<ul style="list-style-type: none"> Fans are used in order to cool the refrigerator. It is normal and not a fault. 	
<p>Condensation on the inner walls of refrigerator.</p>	<ul style="list-style-type: none"> Hot and humid weather increases icing and condensation. It is normal and not a fault. 	
	<ul style="list-style-type: none"> Doors are opened frequently or left open for a long time. 	<ul style="list-style-type: none"> Do not open the doors frequently. Close them if they are open.
	<ul style="list-style-type: none"> Door is open. 	<ul style="list-style-type: none"> Close the door completely.
<p>Humidity occurs on the outside of the refrigerator or between the doors.</p>	<ul style="list-style-type: none"> There might be humidity in the air; this is quite normal in humid weather. When the humidity is less, condensation will disappear. 	

Bad odour inside the refrigerator.	<ul style="list-style-type: none"> No regular cleaning is performed. 	<ul style="list-style-type: none"> Clean the inside of the refrigerator regularly with a sponge, lukewarm water or carbonate dissolved in water.
	<ul style="list-style-type: none"> Some containers or package materials may cause the smell. 	<ul style="list-style-type: none"> Use a different container or different brand packaging material.
	<ul style="list-style-type: none"> Food is put into the refrigerator in uncovered containers. 	<ul style="list-style-type: none"> Keep the food in closed containers. Microorganisms spreading out from uncovered containers can cause unpleasant odours.
	<ul style="list-style-type: none"> Remove the foods that have expired best before dates and spoiled from the refrigerator. 	
The door is not closing.	<ul style="list-style-type: none"> Food packages are preventing the door from closing. 	<ul style="list-style-type: none"> Replace the packages that are obstructing the door.
	<ul style="list-style-type: none"> The refrigerator is not completely even on the floor. 	<ul style="list-style-type: none"> Adjust the feet to balance the refrigerator.
	<ul style="list-style-type: none"> The floor is not level or strong. 	<ul style="list-style-type: none"> Make sure that the product is leveled and capable to carry the refrigerator.
Crispers are stuck.	<ul style="list-style-type: none"> The food is touching the ceiling of the drawer. 	<ul style="list-style-type: none"> Rearrange food in the drawer.
If The Surface Of The Product Is Hot.	<ul style="list-style-type: none"> High temperatures may be observed between the two doors, on the side panels and at the rear grill while the product is operating. This is normal and does not require service maintenance! 	

Technical data

Product category	
Product type	Refrigerator- Freezer
Installation type	Free - Standing
Product dimensions	
Height(min-max)	1865
Width	595
Depth	663
Net Volume(l)	
Fridge	210
Freezer	106
Defrost system	
Fridge	Auto Defrost
Freezer	Auto Defrost
Other specifications	
Energy consumption	298 kwh/Year
Energy efficiency class	MEPS 4 stars
Noise level(dba)	37dB(A)
Rated voltage	220 - 240 V
Rated frequency	50 Hz

Environmental concerns

Compliance with the WEEE Directive and Disposing of the Waste Product:

This product complies with EU WEEE Directive (2012/19/EU). This product bears a classification symbol for waste electrical and electronic equipment (WEEE).



This symbol indicates that this product shall not be disposed with other household wastes at the end of its service life. Used device must be returned to official collection point for recycling of electrical and electronic devices. To find these collection systems please contact to your local authorities or retailer where the product was purchased. Each household performs important role in recovering and recycling of old appliance. Appropriate disposal of used appliance helps prevent potential negative consequences for the environment and human health.

Compliance with RoHS Directive

The product you have purchased complies with EU RoHS Directive (2011/65/EU). It does not contain harmful and prohibited materials specified in the Directive.

Package information



Packaging materials of the product are manufactured from recyclable materials in accordance with our National Environment Regulations. Do not dispose of the packaging materials together with the domestic or other wastes. Take them to the packaging material collection points designated by the local authorities.

Maintenance and cleaning

⚠Never use gasoline, benzene or similar substances for cleaning purposes.

⚠We recommend that you unplug the appliance before cleaning.

⚠Never use any sharp abrasive instrument, soap, household cleaner, detergent and wax polish for cleaning.

⚠For non-No Frost products, water drops and frosting up to a fingerbreadth occur on the rear wall of the Fridge compartment. Do not clean it; never apply oil or similar agents on it.

⚠Only use slightly damp microfiber cloths to clean the outer surface of the product. Sponges and other types of cleaning cloths may scratch the surface.

☑Use lukewarm water to clean the cabinet of your refrigerator and wipe it dry.

☑Use a damp cloth wrung out in a solution of one teaspoon of bicarbonate of soda to one pint of water to clean the interior and wipe it dry.

⚠Make sure that no water enters the lamp housing and other electrical items.

⚠If your refrigerator is not going to be used for a long period of time, unplug the power cable, remove all food, clean it and leave the door open.

☑Check door seals regularly to ensure they are clean and free from food particles.

⚠To remove door racks, remove all the contents and then simply push the door rack upwards from the base.

⚠Never use cleaning agents or water that contain chlorine to clean the outer surfaces and chromium coated parts of the product. Chlorine causes corrosion on such metal surfaces.

⚠Do not use sharp, abrasive tools, soap, household cleaning agents, detergents, kerosene, fuel oil, varnish etc. to prevent removal and deformation of the prints on the plastic part. Use lukewarm water and a soft cloth for cleaning and then wipe it dry.

Protection of plastic surfaces

☒Do not put the liquid oils or oil-cooked meals in your refrigerator in unsealed containers as they damage the plastic surfaces of your refrigerator. In case of spilling or smearing oil on the plastic surfaces, clean and rinse the relevant part of the surface at once with warm water.

IKEA GUARANTEE

How long is the IKEA guarantee valid?

This guarantee is valid for 5 years from the original date of purchase of your appliance at IKEA Pty Ltd (ABN 84006270757) and IKEA New Zealand Limited (NZBN 9429047515468). The original sales receipt is required as proof of purchase. If service work is carried out under guarantee, this will not extend the guarantee period for the appliance.

Who will execute the service?

IKEA service provider will provide the service through its own service operations or authorized service partner network. Contact IKEA for further information.

If you encounter any trouble with the appliance and wish to register a service call or make a claim, please refer to www.ikea.com for your local store after sales customer service center phone number, online email and opening times. The principal address and contact details in Australia and New Zealand are:

IKEA Service Office
L1 Clock Tower, 630 Princes Highway Tempe, NSW
2044
Australia phone: (02) 9010 0264
New Zealand phone: +64 9 802 4864

What does this guarantee cover?

The guarantee covers faults of the appliance, which have been caused by faulty construction or material faults from the date of purchase from IKEA. This guarantee applies to domestic use only. The products have been designed and tested for domestic purposes only and this guarantee does not cover damage arising from use of the Product in a commercial environment.

The exceptions are specified under the headline "What is not covered under this guarantee?" Within the guarantee period, the costs to remedy the fault e.g. repairs, parts, labour and travel will be covered, provided that the appliance is accessible for repair without special expenditure. Replaced parts become the property of IKEA.

The guarantee exists only if the appliance complies and is installed in accordance with:

- The technical specifications.
- The Assembly Instructions and user manual Safety Information.

IKEA's guarantee is subject to Australian Consumer Law - see Schedule 2 to Competition and Consumer Act, 2010 and New Zealand Consumer Guarantees Act 1993. This guarantee is in addition to (and does not exclude, restrict or modify in any way) any non-excludable statutory warranties in Australia and New Zealand.

What will IKEA do to correct the problem?

IKEA appointed service provider will examine the product and decide, at its sole discretion, if it is covered under this guarantee. They will notify you as to whether your claim is covered under this guarantee. If your claim is approved, the IKEA service provider or its authorized service partner, will then, at its sole discretion, either repair the defective product or replace it with the same or a comparable product.

What is not covered under this guarantee?

- Normal wear and tear.
- Deliberate or negligent damage, damage caused by failure to observe operating instructions, incorrect installation or by connection to the wrong voltage, damage caused by chemical or electro-chemical reaction, rust, corrosion or water damage including but not limited to damage caused by excessive lime in the water supply, damage caused by abnormal environmental conditions.
- Consumable parts including batteries and lamps.
- Non-functional and decorative parts which do not affect normal use of the appliance, including any scratches and possible colour differences.
- Accidental damage caused by foreign objects including insect or vermin infestation or substances and cleaning or unblocking of filters, drainage systems or soap drawers.
- Damage to the following parts: ceramic glass, accessories, crockery and cutlery baskets, feed and drainage pipes, seals, lamps and lamp covers, screens, knobs, casings and parts of casings. Unless such damages can be proved to have been caused by production faults.
- Cases where no fault could be found during a technician's visit.
- Repairs not carried out by our appointed service providers and/or an authorized service contractual partner or where non-original parts have been used.
- Repairs caused by installation which is faulty or not according to specification.
- The use of the appliance in a non-domestic environment i.e. professional use.
- Transportation damages. If a customer transports the product to their home or other address, IKEA is not liable for any damage that may occur during transport. However, if IKEA delivers the product to the customer's delivery address, then damage to the product that occurs during this delivery will be covered by this guarantee.
- Cost for carrying out the initial installation of the IKEA appliance. However, if an IKEA service provider or its authorized service partner repairs or replaces the appliance under the terms of this guarantee, the service provider or its authorized service partner will re-install the repaired appliance

IKEA GUARANTEE

- or install the replacement, if necessary.
- The appliance's serial number or warranty seal has been removed or defaced.

How country law applies

Our goods come with guarantees that cannot be excluded under the Australian Consumer Law (ACL) and New Zealand Consumer Guarantees Act 1993. You are entitled to a replacement or refund for a major failure and compensation for any other reasonably foreseeable loss or damage.

You are also entitled to have the goods repaired or replaced if the goods fail to be of acceptable quality and the failure does not amount to a major failure.

This guarantee is not intended in any way to limit or exclude such rights and remedies that you may have under law.

You can find out more information about the Australian Consumer Law on the ACCC website: www.accc.gov.au

You can find out more information about the New Zealand Consumer Guarantees Act 1993 on the Commerce Commission website: www.comcom.govt.nz and Consumer Protection website: www.consumerprotection.govt.nz/general-help/consumer-laws/consumer-guarantees-act

Area of validity

This IKEA guarantee applies only to products purchased and installed in AUSTRALIA and NEW ZEALAND.

What you must do to make a claim under the guarantee:

To make a claim under the guarantee, contact IKEA after sales customer service center at the above address or refer to www.ikea.com for your local store customer service phone number, online email and opening times. Please describe the problem that you are facing with the appliance in detail along with your product article number (8 digit code) and date of purchase at the time of call registration.

Please do not hesitate to contact the dedicated after sales customer service center for IKEA appliances to:

1. Make a service request under this guarantee;
2. Ask for clarification on installation of the IKEA appliance in the dedicated IKEA kitchen furniture.
3. Ask for clarification on user manual contents and specifications of the IKEA appliance.

To ensure that we provide you with the best assistance, please read carefully the Assembly Instructions and/or the User Manual section of this booklet before contacting us.

How to reach us if you need our service



The IKEA after sales customer service centre will assist you on the phone with basic troubleshooting for your appliance at the time of service call request. Please refer to www.ikea.com and select your local store for local store phone numbers and opening times.

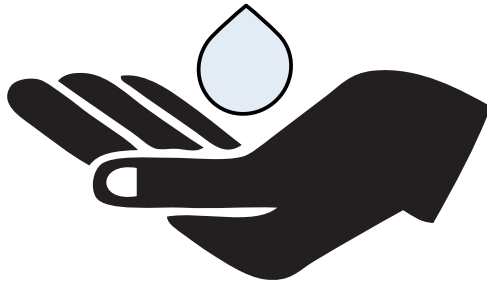
- ① Please describe the problem that you are facing with the appliance in detail along with your product article number (8 digit code), the Serial Number (8 digit code that can be found on the rating plate) and date of purchase at the time of call registration.
- ① **SAVE THE SALES RECEIPT!** Kindly keep all these details and original invoice of purchase handy during the service technician's visit to enable him to carry out the job. It is your proof of purchase and required for the guarantee to apply. Note that the receipt reports also the IKEA article name and number (8 digit code) for each of the appliances you have purchased.

This refrigerator contains biocidal products in the following parts to prevent dry film fungal growth and unwanted odours.

Active substance:

- Silver (CAS: 7440-22-4) contains (nano) silver for door handle and carbon filter
- Titanium dioxide (CAS: 13463-67-7) contains (nano) titanium dioxide for carbon filter
- IPBC (CAS: 55406-53-6) for seal

The concentrations of biocidal products are very low hence they should not pose unacceptable health risks.





11 5943 0505/AA

© Inter IKEA Systems B.V. 2023

50111 AA-2691144 - 1